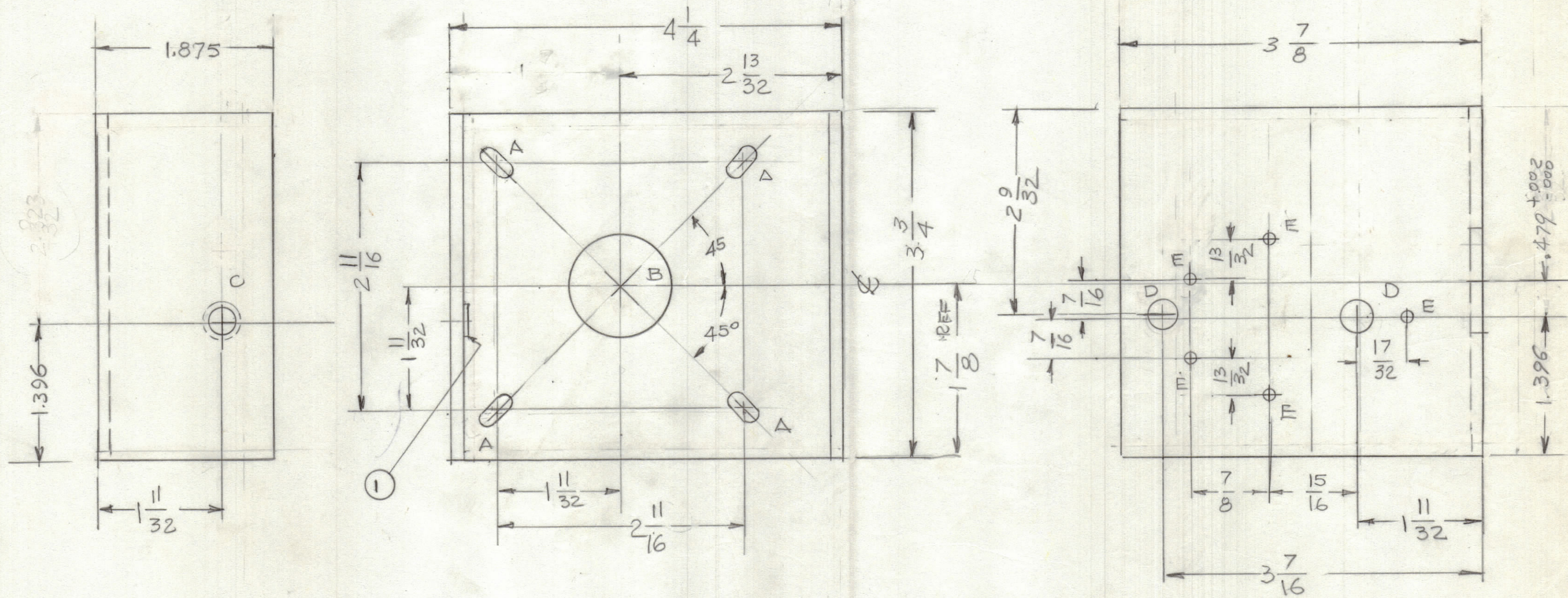


REVISIONS						
ZONE	LTR	DESCRIPTION	DATE	E.M.N.NO	DRAFT	CHKD APPD
	✓	CHANGE DIM FOR "C & D" HOLE			G.D.L.	
	Ø	ORIGINAL RELEASE FOR PRODUCTION	11-6-79	✓	MAC	FB



- HOLES:
- A - 13/64 X 13/32 4 REQ'D
  - B - 11/8 DIA 1 REQ'D
  - C - 5/16 DIA 1, REQ'D
  - D - 3/8 DIA 2 REQ'D
  - E - 9/64 DIA 5 REQ'D

UNLESS OTHERWISE SPECIFIED:

- USE MATERIAL THICKNESS FOR MAXIMUM RADIUS ON ALL BENDS.
- ALL ANGULAR BENDS 90 DEGREES.
- REMOVE ALL BURRS AND SHARP EDGES.

1	TU-ZB (ATS-ZB)	
QTY / UNIT	MODEL USED ON	ASS'Y NO.
APPLICATION		
CODE		

NOTICE TO PERSONS RECEIVING THIS DRAWING  
 THE TECHNICAL MATERIEL CORPORATION claims proprietary right in the material disclosed hereon. This drawing is issued in confidence for engineering information only and may not be reproduced or used to manufacture anything shown hereon without permission from THE TECHNICAL MATERIEL CORPORATION to the user. This drawing is loaned for mutual assistance and is subject to recall at any time.

UNLESS OTHERWISE SPECIFIED DIMENSIONS ARE IN INCHES AND INCLUDE CHEMICALLY APPLIED OR PLATED FINISHES

TOLERANCES ON

DECIMALS	FRACTIONS
.X ± .05	± 1/64
.XX ± .01	ANGLES
.XXX ± .005	± 0° -30'

MATERIAL 1/8 THK ALUM 5052 H32

FINISH 8404 VEL IRIDITE

1	1	BB 117-6	NYLON BEARING	C
QTY. REQ.	ITEM	PART NO.	DESCRIPTION	SYMBOL
LIST OF MATERIAL				
FINAL APPROVAL		DATE	<b>THE TECHNICAL MATERIEL CORP.</b> MAMARONECK, NEW YORK  <b>BRACKET MTG. GEAR</b>	
MECH. DES.		DATE		
ELECT. DES.		DATE		
CHECKED		DATE		
DRAWN		DATE	SIZE CODE IDENT.NO. DWG NO. ISSUE C 82679 MS 6952 Ø	
SCALE 1:1			SHEET	OF

MS 6952