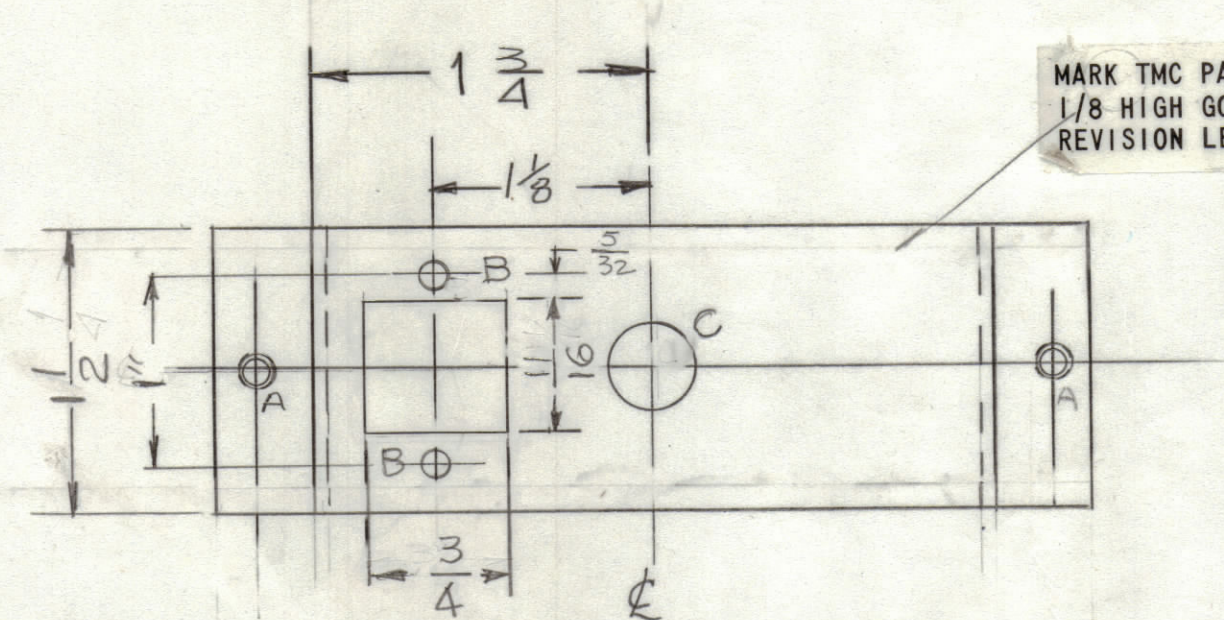
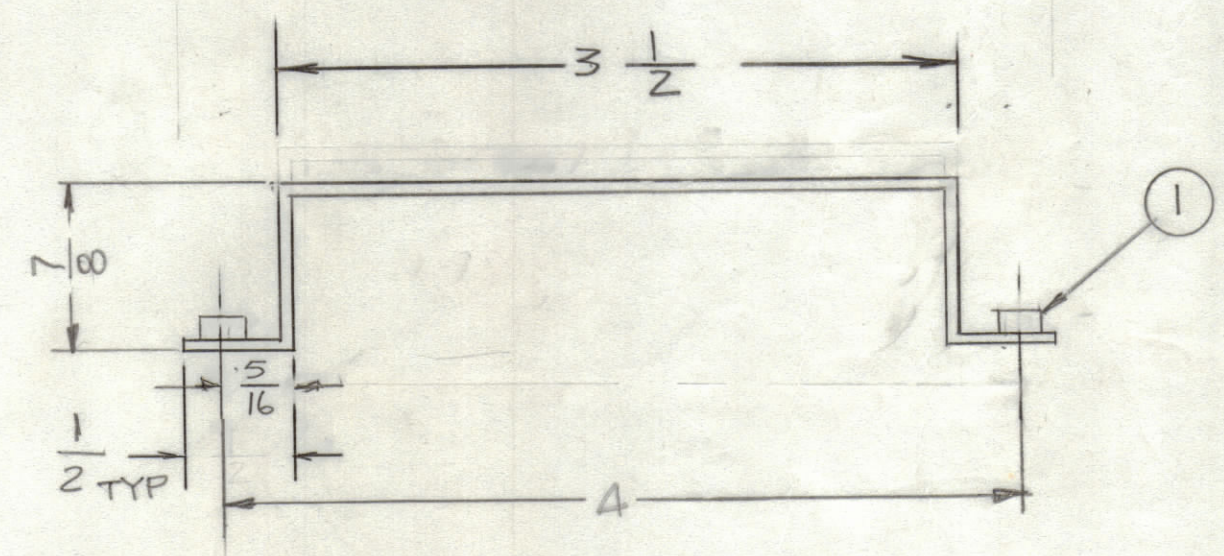


REVISIONS							
ZONE	LTR	DESCRIPTION	DATE	E.M.N.NO	DRAFT	CHKD	APPD
	Ø	ORIGINAL RELEASE FOR PROD.	1-4-83		SDL		



MARK TMC PART NUMBER
1/8 HIGH GOTHIC WITH LATEST
REVISION LETTER

A -.161+.164 DIA 2 REQ'D
B = 9/64 DIA. 2 REQ'D
C = 15/32 DIA



UNLESS OTHERWISE SPECIFIED:

1. USE MATERIAL THICKNESS FOR MAXIMUM RADIUS ON ALL BENDS.
2. ALL ANGULAR BENDS 90 DEGREES.
3. REMOVE ALL BURRS AND SHARP EDGES.
4. MOUNT INSERTS AFTER FINISHING.

QTY / UNIT	MODEL USED ON	ASS'Y NO.
1	AX 5257	
1	AX 5254	
	CFS-4	

APPLICATION	
CODE	

NOTICE TO PERSONS RECEIVING THIS DRAWING
THE TECHNICAL MATERIEL CORPORATION claims proprietary right in the material disclosed hereon. This drawing is issued in confidence for engineering information only and may not be reproduced or used to manufacture anything shown hereon without permission from THE TECHNICAL MATERIEL CORPORATION to the user. This drawing is loaned for mutual assistance and is subject to recall at any time.

UNLESS OTHERWISE SPECIFIED
DIMENSIONS ARE IN INCHES
AND INCLUDE CHEMICALLY APPLIED
OR PLATED FINISHES

TOLERANCES ON

DECIMALS	FRACTIONS
.X ± .05	± 1/64
.XX ± .01	ANGLES
.XXX ± .005	± 0° -30'

MATERIAL .063 THK
ALUM. 5052-H32

FINISH 3A04
VEL. IRIDITE

QTY. REQ.	ITEM	PART NO.	DESCRIPTION	SYMBOL
2	1	NT1290440-4	NUT, ROUND	A

FINAL APPROVAL		DATE
<i>S. Demarco</i>		2-2-83
MECH. DES.		DATE
<i>G.D.L.</i>		1-4-83
ELECT. DES.		DATE
CHECKED		DATE
DRAWN		DATE
<i>G.D.L.</i>		7-3-78

THE TECHNICAL MATERIEL CORP.
MAMARONECK, NEW YORK

BRACKET, ON/OFF SW.

SIZE	CODE IDENT. NO.	DWG NO.	ISSUE
C	82679	MS6919	Ø
SCALE		SHEET	OF
1:1			