

4

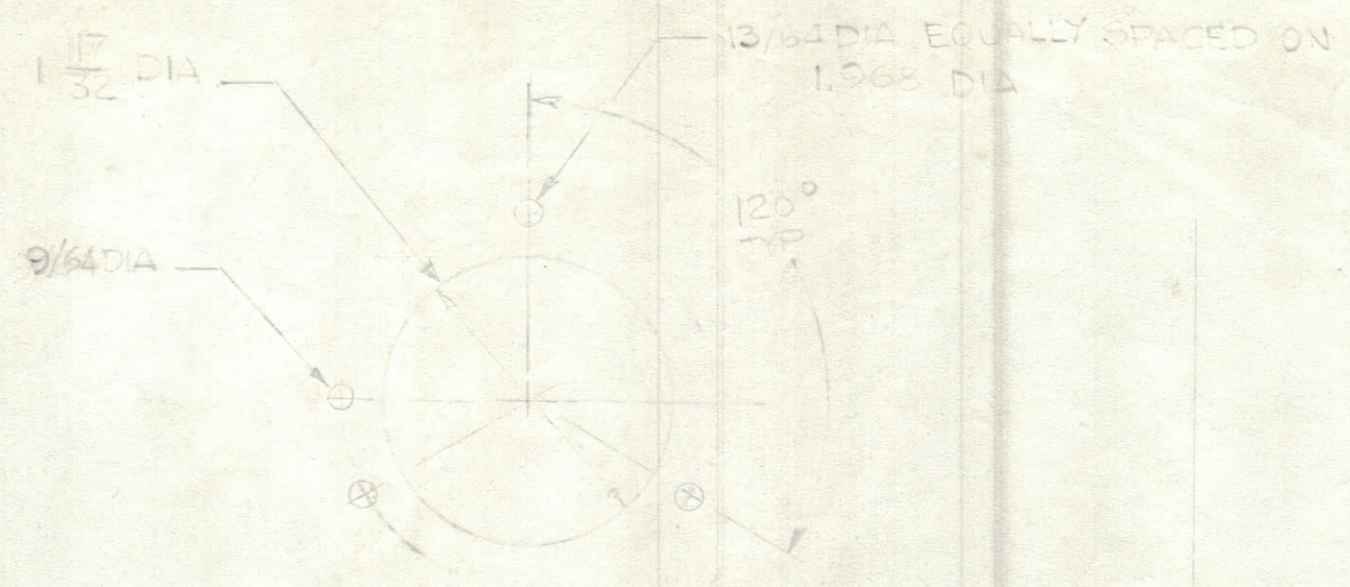
3

2

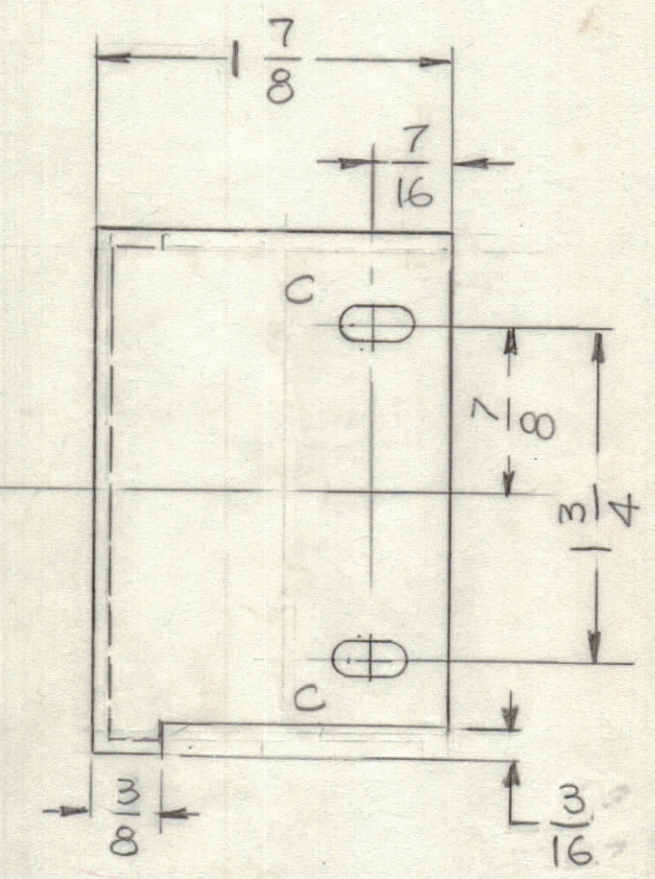
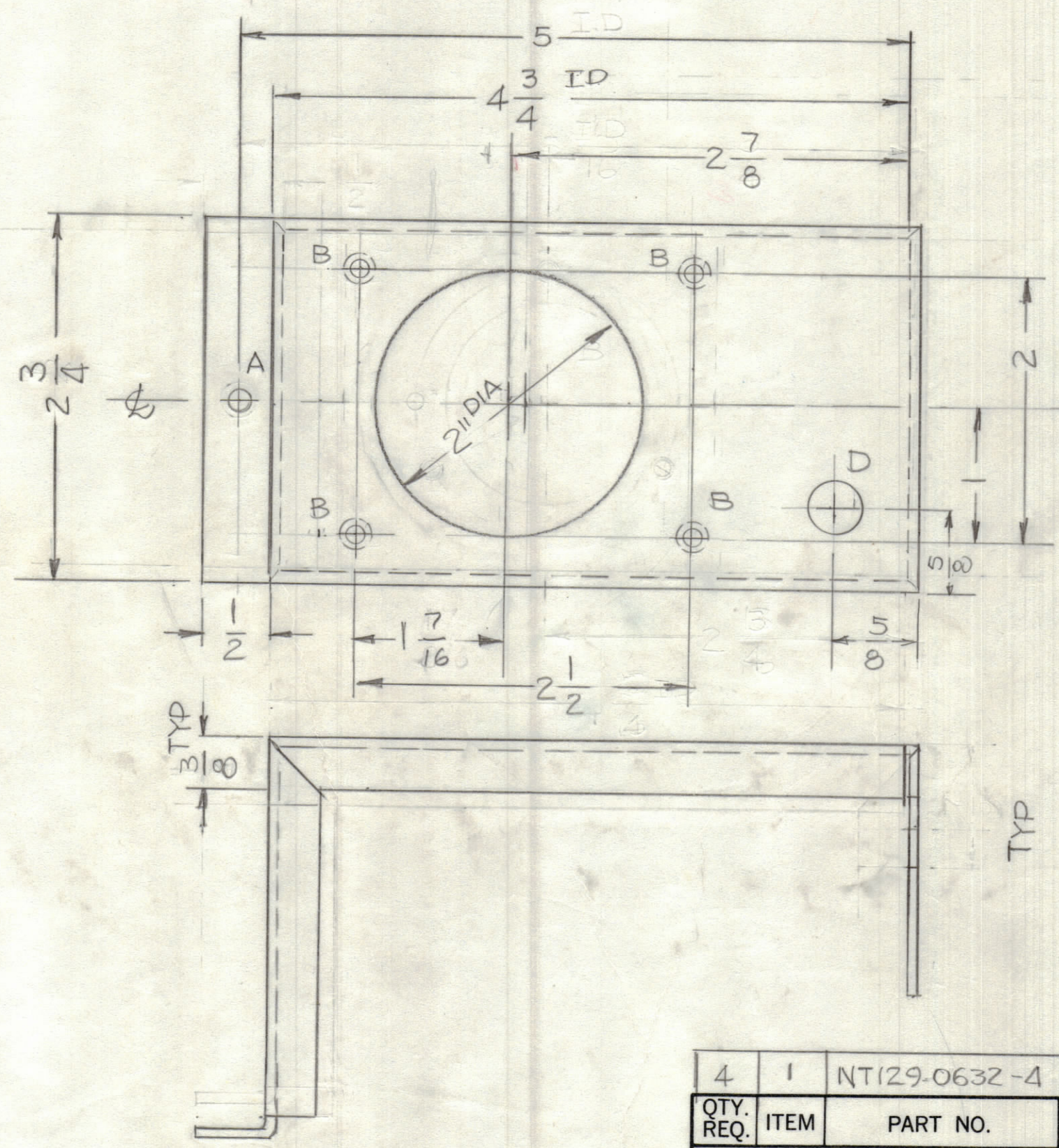
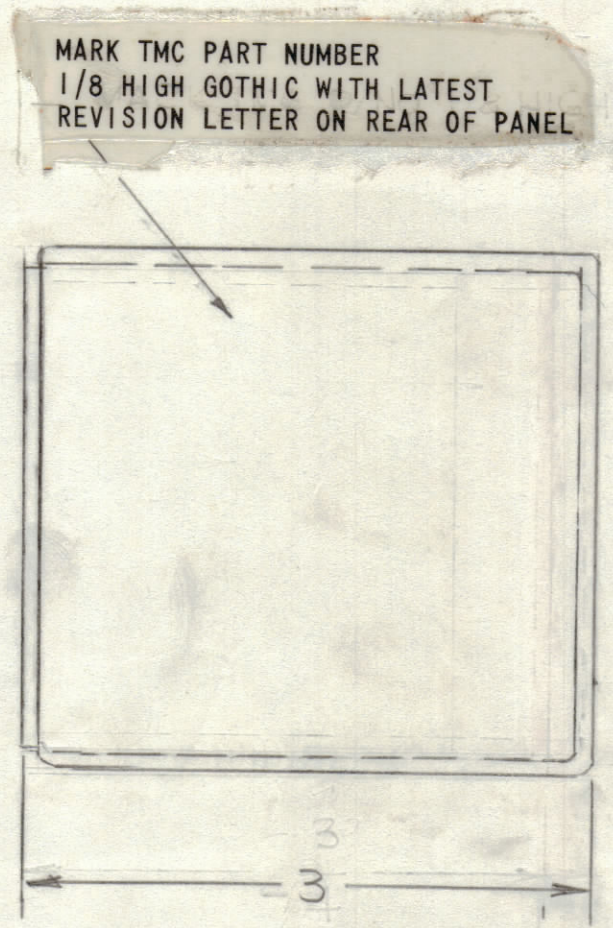
1

REVISIONS						
ZONE	LTR	DESCRIPTION	DATE	E.M.N.NO	DRAFT	CHKD APPD
1	X1	REVISED & UPDATED	10-2-78		G.D.L	
	X2	DIM. 17/16 WAS 1 1/8	10-13-78		G.D.L	
	Ø	ORIGINAL RELEASE FOR	8-28-79		MAC	

- HOLES :
- A - 13/64 DIA 1 REQ'D
 - B - .191 - .194 DIA 4 REQ'D
 - C - 11/64 x 3/8 SLOT 2 REQ'D
 - D - 13/32 DIA 1 REQ'D



DETAIL B"



UNLESS OTHERWISE SPECIFIED:

- USE MATERIAL THICKNESS FOR MAXIMUM RADIUS ON ALL BENDS.
- ALL ANGULAR BENDS 90 DEGREES.
- REMOVE ALL BURRS AND SHARP EDGES.

1	MFTA-10K/J (400HZ)	BMA 560
QTY / UNIT	MODEL USED ON	ASS'Y NO.
APPLICATION		
CODE		

NOTICE TO PERSONS RECEIVING THIS DRAWING
 THE TECHNICAL MATERIEL CORPORATION claims proprietary right in the material disclosed herein. This drawing is issued in confidence for engineering information only and may not be reproduced or used to manufacture anything shown hereon without permission from THE TECHNICAL MATERIEL CORPORATION to the user. This drawing is loaned for mutual assistance and is subject to recall at any time.

UNLESS OTHERWISE SPECIFIED DIMENSIONS ARE IN INCHES AND INCLUDE CHEMICALLY APPLIED OR PLATED FINISHES

TOLERANCES ON

DECIMALS	FRACTIONS
.X ± .05	± 1/64
.XX ± .01	ANGLES
.XXX ± .005	± 0° -30'

MATERIAL .081 THK ALUM
5052-H32

FINISH 3404

4	1	NT/29-0632 -4	NUT, ROUND	
QTY. REQ.	ITEM	PART NO.	DESCRIPTION	SYMBOL
LIST OF MATERIAL				
FINAL APPROVAL		DATE		
MECH. DES.		DATE		
ELECT. DES.		DATE		
CHECKED		DATE		
DRAWN		DATE		
G.D.L				
THE TECHNICAL MATERIEL CORP. MAMARONECK, NEW YORK			BRACKET MTG. PLATE MOTOR	
SIZE	CODE IDENT. NO.	DWG NO.	ISSUE	
C	82679	MS 6901	Ø	
SCALE	1:1	SHEET	OF	

4

3

2

1

MS 6901