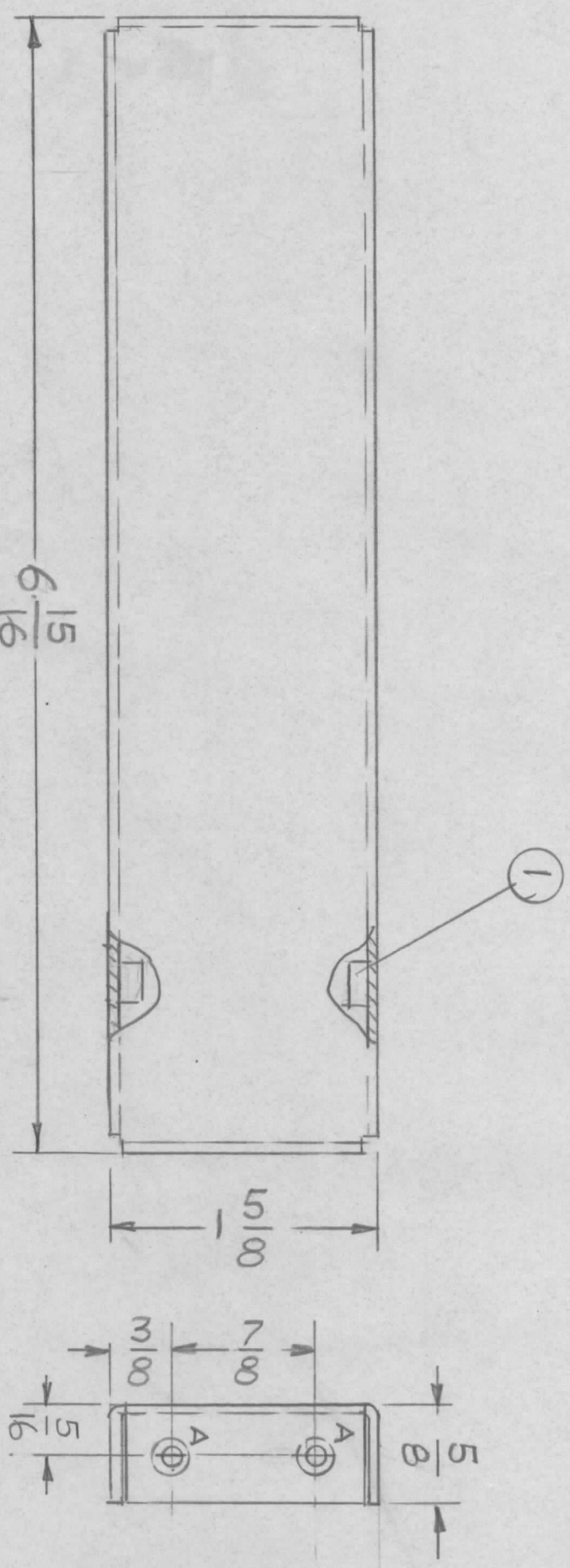


REVISIONS				DATE	APPROVED
E.M.N. NO.	DRAFT	CHKD	ZONE	LTR	DESCRIPTION
					ORIGINAL RELEASE FOR PRODUCTION
					2.11.80
					AB.



HOLES -  
A - .191 - .194 DIA 8 REQ.

LEFT SIDE MIRROR IMAGE

REQ'D	ITEM	PART NUMBER	DESCRIPTION	SYM.
8	1	NT129 0632-4	NUT ROUND	

LIST OF MATERIAL  
THE TECHNICAL MATERIEL CORP.  
MAMARONECK, NEW YORK

RIGHT & LEFT SIDE PLATE

- UNLESS OTHERWISE SPECIFIED:
1. USE MATERIAL THICKNESS FOR MAXIMUM RADIUS ON ALL BENDS.
  2. ALL ANGULAR BENDS 90 DEGREES.
  3. REMOVE ALL BURRS AND SHARP EDGES.
  4. MOUNT INSERTS AFTER FINISHING.

MARK TMC PART NUMBER  
1/8 HIGH GOTHIC WITH LATEST  
REVISION LETTER

QTY / UNIT	MODEL USED ON	ASS'Y NO.
1	REP-15	
APPLICATION		
CODE		

DECIMALS	FRACTIONS
X ± .05	1/64
.XX ± .01	ANGLES
.XXX ± .005	0° - 30'
MATERIAL .063THK	
ALUM-5052-H32	
FINISH S404	
VEL IRIDITE	

FINAL APPROVAL		DATE
MECH. DES.		DATE
ELECT. DES.		DATE
CHECKED		DATE
DRAWN	G.D.L.	DATE 6-17-77

SIZE	CODE IDENT. NO.	DWG NO.	ISSUE
B	82679	MS 6805	Φ
SCALE	1:1	SHEET	OF

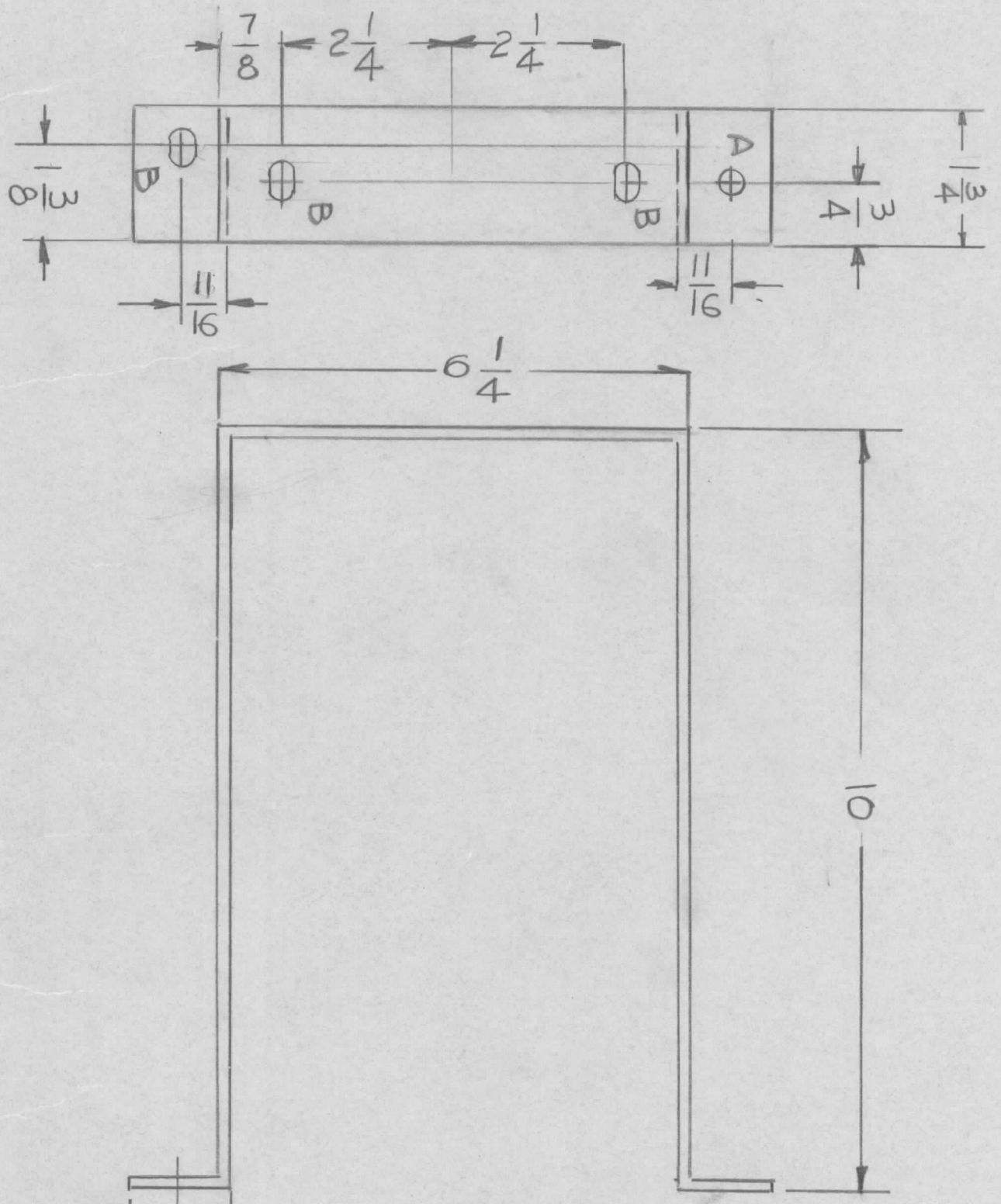
NOTICE TO PERSONS RECEIVING THIS DRAWING  
THE TECHNICAL MATERIEL CORPORATION claims proprietary right in the material disclosed hereon. This drawing is issued in confidence for engineering information only and may not be reproduced or used to manufacture anything shown hereon without permission from THE TECHNICAL MATERIEL CORPORATION to the user. This drawing is loaned for mutual assistance and is subject to recall at any time.







REVISIONS				DATE	APPROVED
EM.N. NO.	DRAFT	CHKD	ZONE	LTR	DESCRIPTION



HOLE S:  
 A - 5/16 DIA  
 B - 5/16 X 1/2 SLOT

REQ'D	ITEM	PART NUMBER	DESCRIPTION	SYM.

THE TECHNICAL MATERIEL CORP.  
 MAMARONECK, NEW YORK

BRACKET MTG. CAP.

QTY / UNIT	1	MODEL USED ON	MFT2-10KF	ASS'Y NO.	
APPLICATION		CODE			

UNLESS OTHERWISE SPECIFIED DIMENSIONS ARE IN INCHES AND INCLUDE CHEMICALLY APPLIED OR PLATED FINISHES	DECIMALS	FRACTIONS
X ± .05	TOLS.	1/64
.XX ± .01	ANGLES	0° - 30'
.XXX ± .005		
MATERIAL	.125 THK	
ALUM	5052 H32	
FINISH	S404	
VEL	IRIDITE	

FINAL APPROVAL	DATE
MECH. DES.	DATE
ELECT. DES.	DATE
CHECKED	DATE
DRAWN	DATE

SIZE	CODE IDENT. NO.	DWG NO.	ISSUE
B	82679	MS 6809	
SCALE	1/2	SHEET	OF

NOTICE TO PERSONS RECEIVING THIS DRAWING  
 THE TECHNICAL MATERIEL CORPORATION claims proprietary right in the material disclosed hereon. This drawing is issued in confidence for engineering information only and may not be reproduced or used to manufacture anything shown hereon without permission from THE TECHNICAL MATERIEL CORPORATION to the user. This drawing is loaned for mutual assistance and is subject to recall at any time.

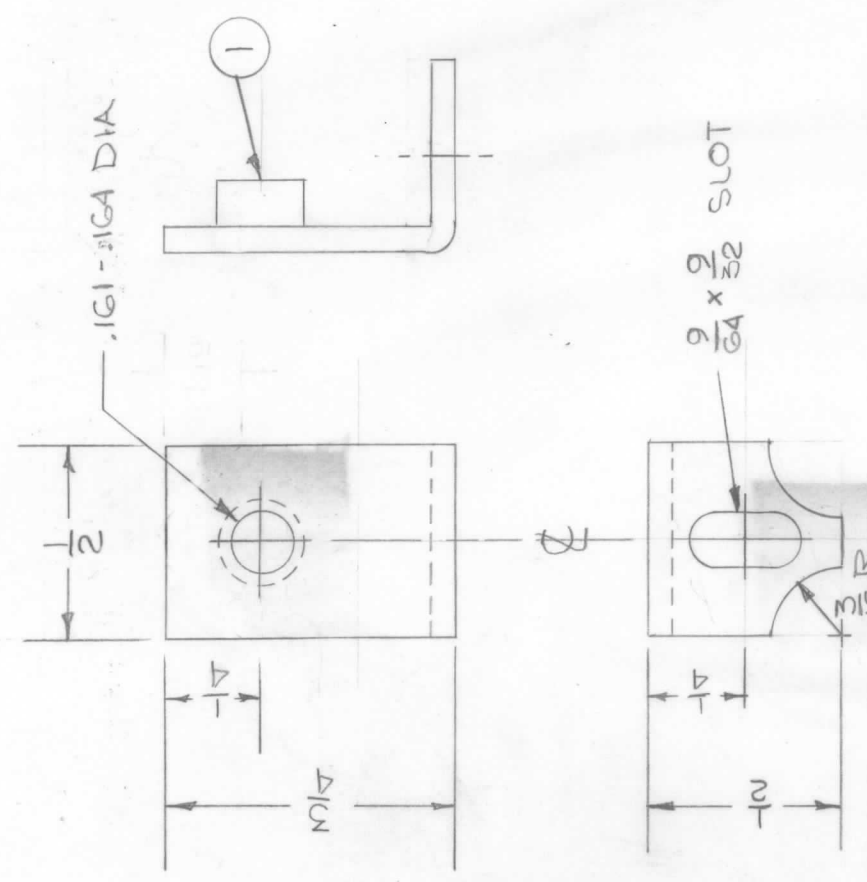






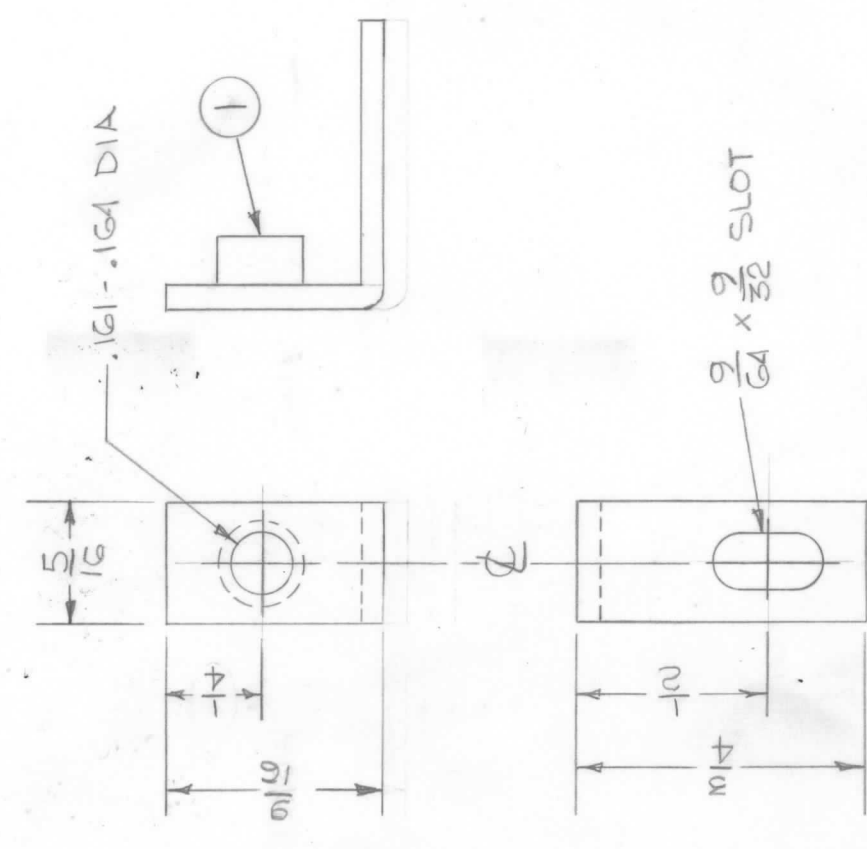


USED TO MOUNT: A5706 } (6 REQ)  
 A5707 }  
 A5708 }



MS6835-1

USED TO MOUNT: A5711 (2 REQ)



MS6835-2

EM.N. NO	DRAFT	CHKD	ZONE	LTR	DESCRIPTION	DATE	APPROVED
1	PH	WJB	Ø		ORIGINAL RELEASE FOR PRODUCTION	6-6-78	*

REVISIONS

REQ'D	ITEM	PART NUMBER	DESCRIPTION	SYMBOL
1	NT129-0440-4	NUT ROULD		

FINAL APPROVAL	DATE	MECH. DES.	DATE	ELECT. DES.	DATE	CHECKED	DATE	DRAWN	DATE
[Signature]	11-29-77	[Signature]	11-29-77			[Signature]	11-29-77	[Signature]	11-29-77

LIST OF MATERIAL			
THE TECHNICAL MATERIEL CORP. MAMARONECK, NEW YORK			
BRACKET, MTG			
PC BOARD			
SIZE	CODE IDENT. NO.	DWG NO.	ISSUE
B	82679	MSG835	Ø
SCALE 2:1		SHEET	OF
		2	1

UNLESS OTHERWISE SPECIFIED DIMENSIONS ARE IN INCHES AND INCLUDE CHEMICALLY APPLIED OR PLATED FINISHES

DECIMALS: X ± .05, .XX ± .01, .XXX ± .005  
 FRACTIONS: 1/64  
 TOLS. ANGLES: 0°-30'

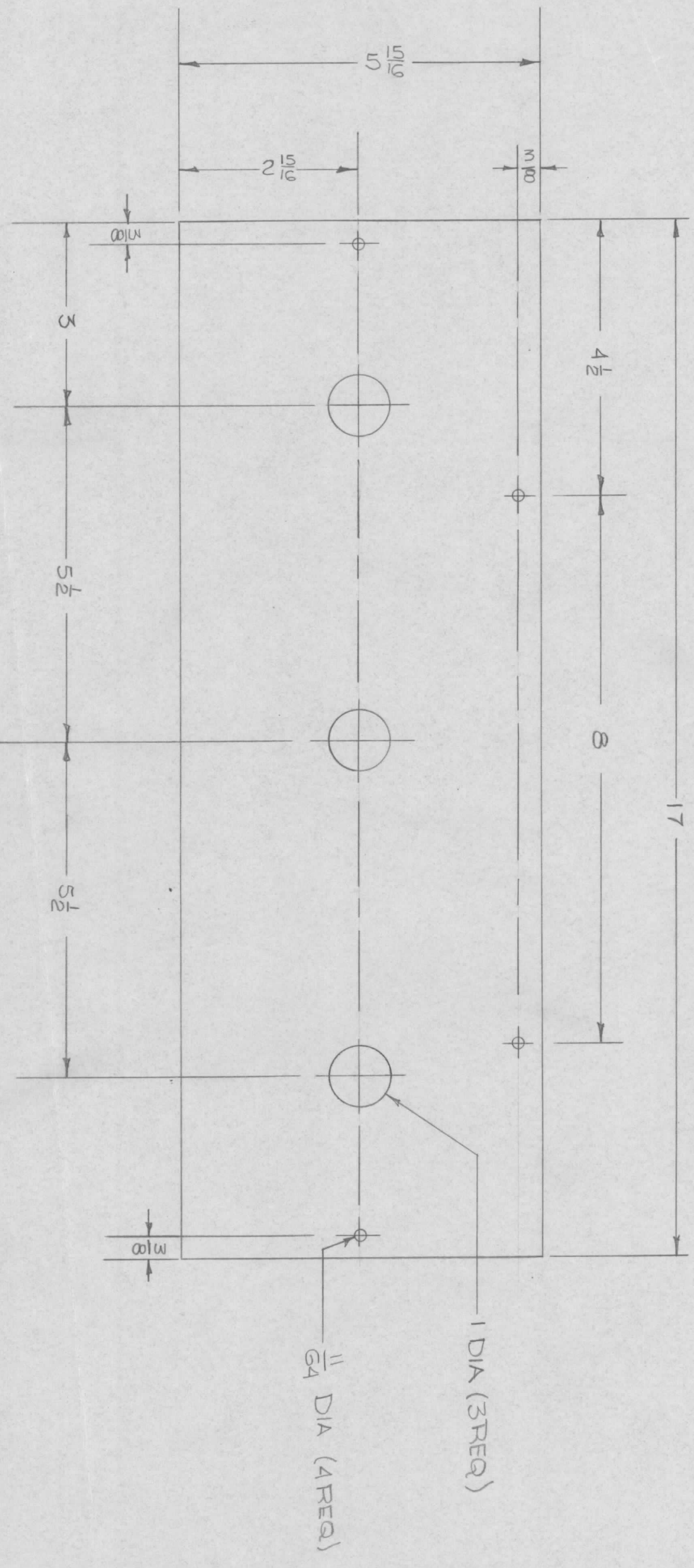
MATERIAL: .064 THK 5052-H32 ALUM  
 FINISH: S404 IRIDITE

AS NOTED MMX(-)-2B BMA536

QTY / UNIT MODEL USED ON ASSY NO.  
 APPLICATION CODE

NOTICE TO PERSONS RECEIVING THIS DRAWING  
 THE TECHNICAL MATERIEL CORPORATION claims proprietary right in the material disclosed hereon. This drawing is issued in confidence for engineering information only and may not be reproduced or used to manufacture anything shown hereon without permission from THE TECHNICAL MATERIEL CORPORATION to the user. This drawing is loaned for mutual assistance and is subject to recall at any time.

REVISIONS				DATE	APPROVED
EM.N. NO.	DRAFT	CHKD	ZONE	LTR	DESCRIPTION
	PH				ORIGINAL RELEASE FOR PRODUCTION
				1-17-78	



REQ'D	ITEM	PART NUMBER	DESCRIPTION	SYM.
			LIST OF MATERIAL	

UNLESS OTHERWISE SPECIFIED DIMENSIONS ARE IN INCHES AND INCLUDE CHEMICALLY APPLIED OR PLATED FINISHES		FINAL APPROVAL		DATE
DECIMALS	X ± .05	TOLS.	FRACTIONS	1/64
	.XX ± .01		ANGLES	0° - 30'
	.XXX ± .005			
MATERIAL	5052-H32 ALUM.	DRAWN	PH	DATE
FINISH	S404 IRIDITE			1-16-78

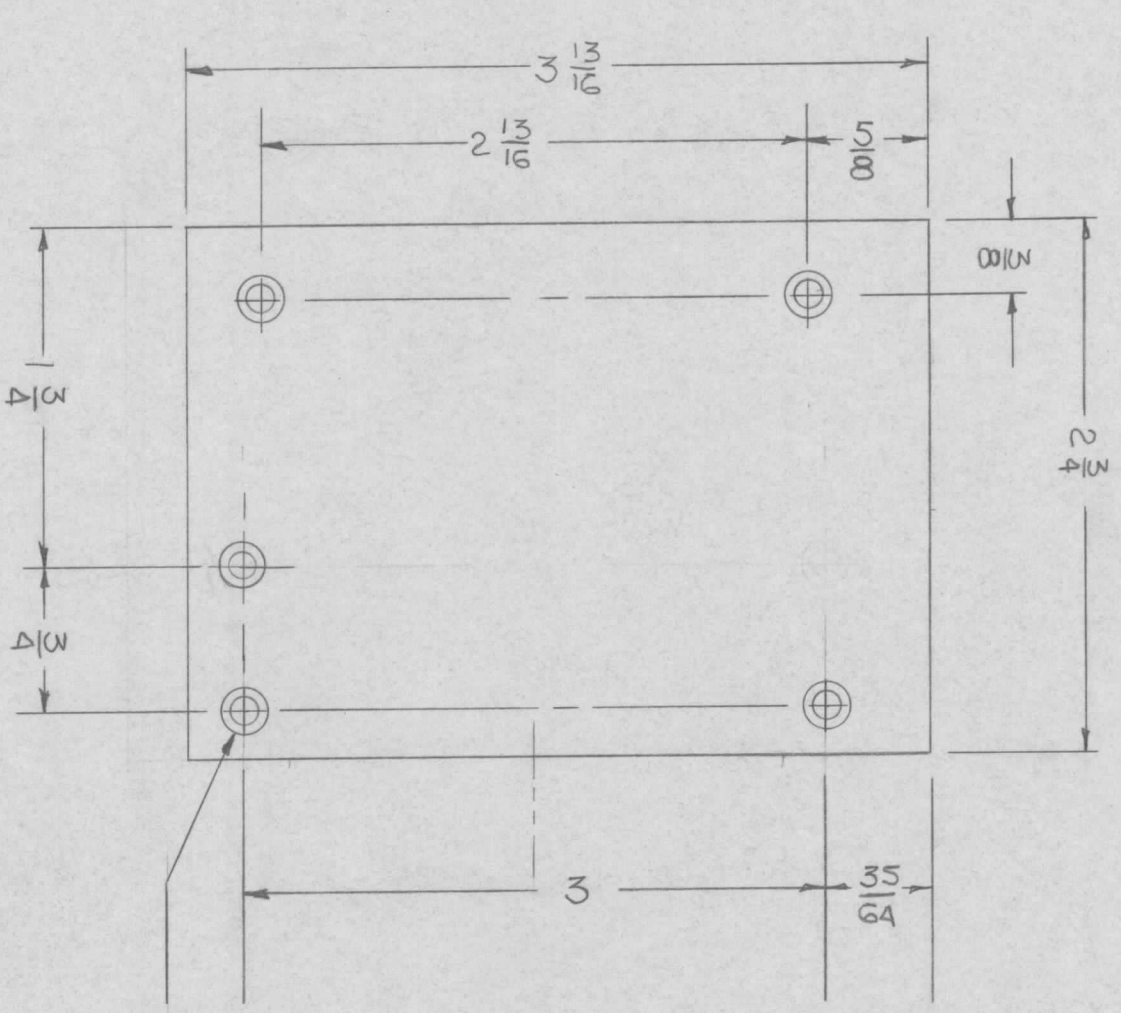
QTY / UNIT	MODEL USED ON	ASSY NO.
2	ATU 1K-8	
	APPLICATION	
	CODE	

NOTICE TO PERSONS RECEIVING THIS DRAWING  
 THE TECHNICAL MATERIEL CORPORATION claims proprietary right in the material disclosed hereon. This drawing is issued in confidence for engineering information only and may not be reproduced or used to manufacture anything shown hereon without permission from THE TECHNICAL MATERIEL CORPORATION to the user. This drawing is loaned for mutual assistance and is subject to recall at any time.



REVISIONS				DATE	APPROVED
EM.N. NO.	DRAFT	CHKD	ZONE	LTR	DESCRIPTION
7	MAC			Ø	ORIGINAL RELEASE FOR PRODUCTION
					1-7-80
					SD

MARK TMC PART NUMBER  
1/8 HIGH GOTHIC WITH LATEST  
REVISION LETTER ON REAR OF PANEL



DRILL .144 CSK 82° TO .284  
SPLACES

10	RCST-1	AX 5224
10	RCST-1	AX 5223
QTY / UNIT		
MODEL USED ON		
ASS'Y NO.		
APPLICATION		
CODE		

**NOTICE TO PERSONS RECEIVING THIS DRAWING**  
THE TECHNICAL MATERIEL CORPORATION claims proprietary right in the material disclosed hereon. This drawing is issued in confidence for engineering information only and may not be reproduced or used to manufacture anything shown hereon without permission from THE TECHNICAL MATERIEL CORPORATION to the user. This drawing is loaned for mutual assistance and is subject to recall at any time.

UNLESS OTHERWISE SPECIFIED DIMENSIONS ARE IN INCHES AND INCLUDE CHEMICALLY APPLIED OR PLATED FINISHES	
DECIMALS	FRACTIONS
.X ± .05	1/64
.XX ± .01	ANGLES
.XXX ± .005	° .30'
MATERIAL	
1/8 THICK ALUMINUM	
5052-H32	
FINISH	
SAO4 IRIDITE	

REQ'D	ITEM	PART NUMBER	DESCRIPTION	SYM.
			LIST OF MATERIAL	

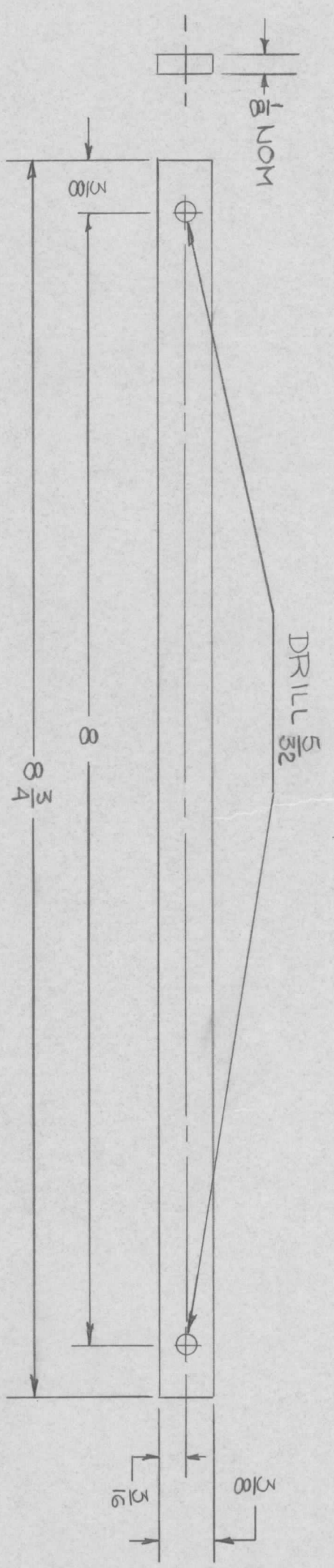
THE TECHNICAL MATERIEL CORP.  
MAMARONECK, NEW YORK

PC CARD HOLDER

FINAL APPROVAL	DATE	1/7/80	
MECH. DES.	DATE		
ELECT. DES.	DATE		
CHECKED	DATE		
DRAWN	DATE	10-14-77	
PH			
SIZE	CODE IDENT. NO.	DWG NO.	ISSUE
B	82679	MS 6855	Ø
SCALE	FULL	SHEET	OF



REVISIONS				DATE	APPROVED
EMN. NO.	DRAFT	CHKD	ZONE	LTR	DESCRIPTION
7	INAC			Ø	ORIGINAL RELEASE FOR PRODUCTION
					1-7-80 SD



NOTE:  
 1. BOW NOT TO EXCEED  $\frac{1}{16}$ " IN THE NOM. DIRECTION  
 2. TWIST NOT TO EXCEED  $3^\circ$

10	RCST-1	AX 52224
10	RCST-1	AX 52223
QTY / UNIT	MODEL USED ON	ASS'Y NO.
	APPLICATION	
	CODE	

**NOTICE TO PERSONS RECEIVING THIS DRAWING**  
 THE TECHNICAL MATERIEL CORPORATION claims proprietary right in the material disclosed hereon. This drawing is issued in confidence for engineering information only and may not be reproduced or used to manufacture anything shown hereon without permission from THE TECHNICAL MATERIEL CORPORATION to the user. This drawing is loaned for mutual assistance and is subject to recall at any time.

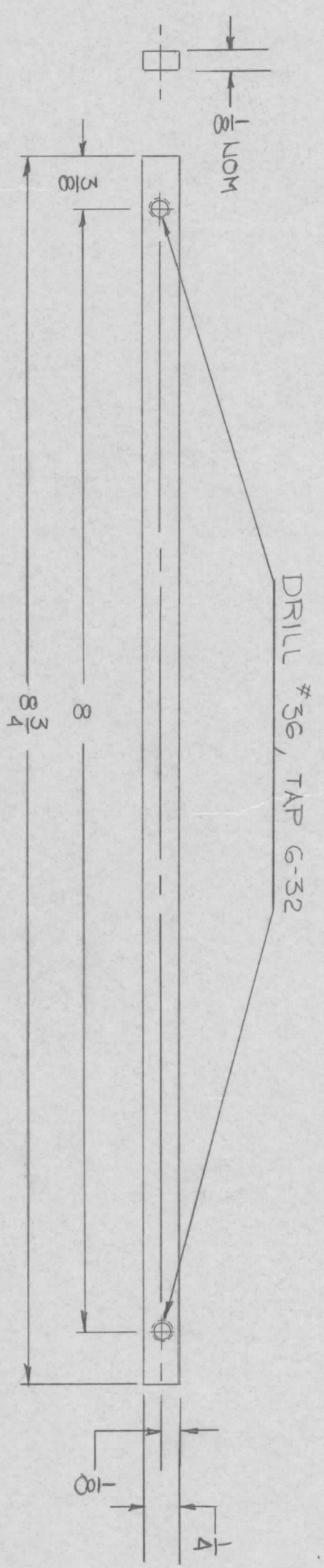
DECIMALS	FRACTIONS
.X ± .05	1/64
.XX ± .01	ANGLES
.XXX ± .005	$0^\circ - 30'$
MATERIAL	FINISH
5052-H32 ALUM	S404 IRIDITE
8 THK	

UNLESS OTHERWISE SPECIFIED DIMENSIONS ARE IN INCHES AND INCLUDE CHEMICALLY APPLIED OR PLATED FINISHES	FINAL APPROVAL	DATE
MECH. DES.	<i>[Signature]</i>	1/7/80
ELECT. DES.		
CHECKED		
DRAWN	PH	DATE 10-13-77

REQ'D	ITEM	PART NUMBER	DESCRIPTION	SYM.
LIST OF MATERIAL				
THE TECHNICAL MATERIEL CORP.				
MAMARONECK, NEW YORK				
BOTTOM GUIDE				
SIZE	CODE IDENT. NO.	DWG NO.	ISSUE	
B	82679	MS6856	Ø	
SCALE	FULL	SHEET	OF	



REVISIONS				DATE	APPROVED
EM.N. NO.	DRAFT	CHKD	ZONE	LTR	DESCRIPTION
	MIC				ORIGINAL RELEASE FOR PRODUCTION
					1-7-80 SD



**NOTE:**  
 1. BOW NOT TO EXCEED  $\frac{1}{16}$ " IN THE NOM. DIRECTION,  
 2. TWIST NOT TO EXCEED  $3^\circ$

1	RCST-1	AX5224
1	RCST-1	AX5223
QTY / UNIT	MODEL USED ON	ASS'Y NO.
	APPLICATION	CODE

UNLESS OTHERWISE SPECIFIED DIMENSIONS ARE IN INCHES AND INCLUDE CHEMICALLY APPLIED OR PLATED FINISHES	DECIMALS	FRACTIONS
X ± .05	TOLS.	1/64
.XX ± .01	ANGLES	0° .30'
.XXX ± .005		
MATERIAL	THK	
5052-H32 ALUM.		
FINISH		
S404 IRIDITE		

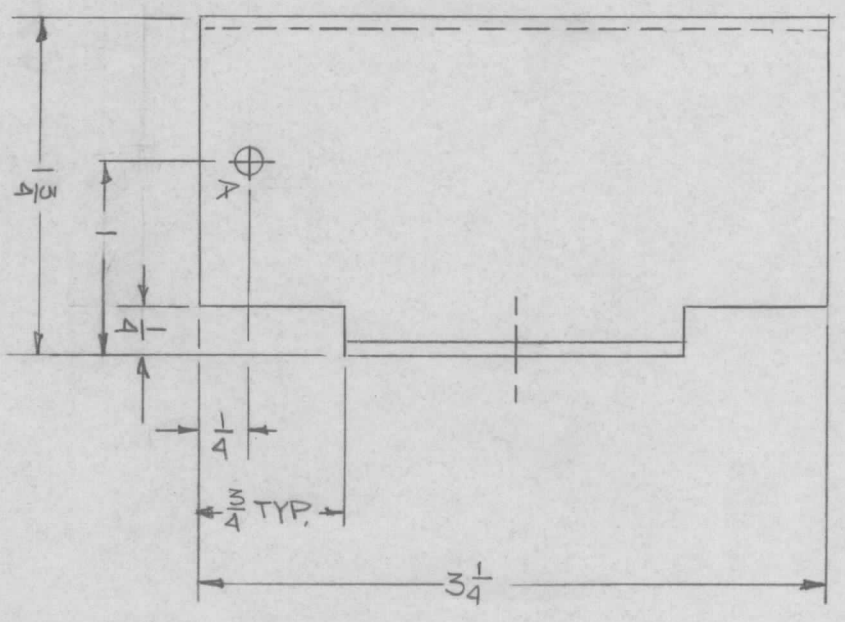
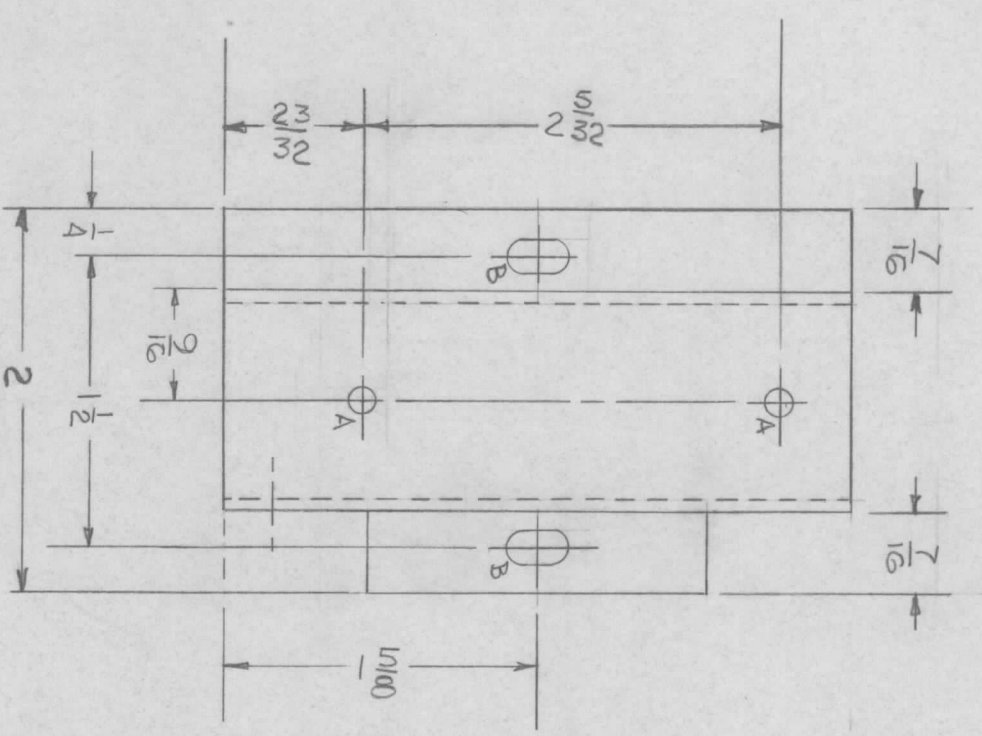
REQ'D	ITEM	PART NUMBER	DESCRIPTION	SYM.
			LIST OF MATERIAL	

FINAL APPROVAL	MECH. DES.	DATE	THE TECHNICAL MATERIEL CORP.
J.D.		1/7/80	MAMARONECK, NEW YORK
ELECT. DES.	CHECKED	DATE	BOTTOM GUIDE
	DRAWN	DATE	(POWER SUPPLY)
	PH	10-15-77	
SIZE	CODE IDENT. NO.	DWG NO.	ISSUE
B	82679	MS 6857	1
SCALE	FULL	SHEET	OF

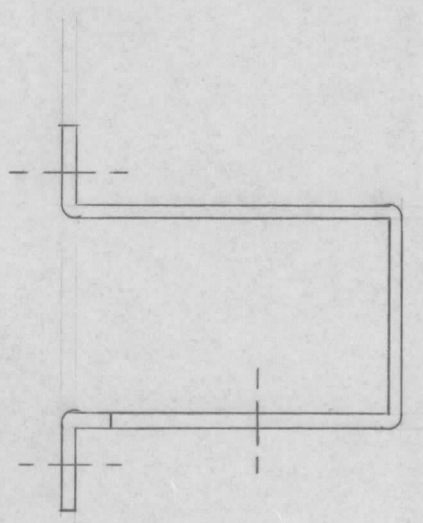
**NOTICE TO PERSONS RECEIVING THIS DRAWING**  
 THE TECHNICAL MATERIEL CORPORATION claims proprietary right in the material disclosed hereon. This drawing is issued in confidence for engineering information only and may not be reproduced or used to manufacture anything shown hereon without permission from THE TECHNICAL MATERIEL CORPORATION to the user. This drawing is loaned for mutual assistance and is subject to recall at any time.



REVISIONS				DATE	APPROVED
EM.N. NO.	DRAFT	CHKD	ZONE	LTR	DESCRIPTION
PH	WB				ORIGINAL RELEASE FOR PRODUCTION
					6-6-78
					*



HOLE	QTY	DESCRIPTION
A	3	9/64 DIA
B	2	11/64 x 11/32 SLOT



1	CHG	
1	MMX) 2B	BMA 53G
QTY / UNIT		ASS'Y NO.
MODEL USED ON		
APPLICATION		
CODE		

UNLESS OTHERWISE SPECIFIED DIMENSIONS ARE IN INCHES AND INCLUDE CHEMICALLY APPLIED OR PLATED FINISHES

DECIMALS FRACTIONS  
 .X ± .05 1/64  
 .XX ± .01 TOLS. ANGLES  
 .XXX ± .005 0° - 30'

MATERIAL .064 THK  
 S052-H32 ALUM  
 FINISH  
 SA04 IRIDIOTE

REQ'D	ITEM	PART NUMBER	DESCRIPTION	SYM.

LIST OF MATERIAL

FINAL APPROVAL		DATE
MECH. DES.		DATE
ELECT. DES.		DATE
CHECKED	DATE	
DRAWN	DATE	
SIZE		CODE IDENT. NO.
SCALE FULL		DWG NO.
SHEET		ISSUE

THE TECHNICAL MATERIEL CORP.  
 MAMARONECK, NEW YORK

HOLDER, PLUG AND CABLE  
 (SINGLE)

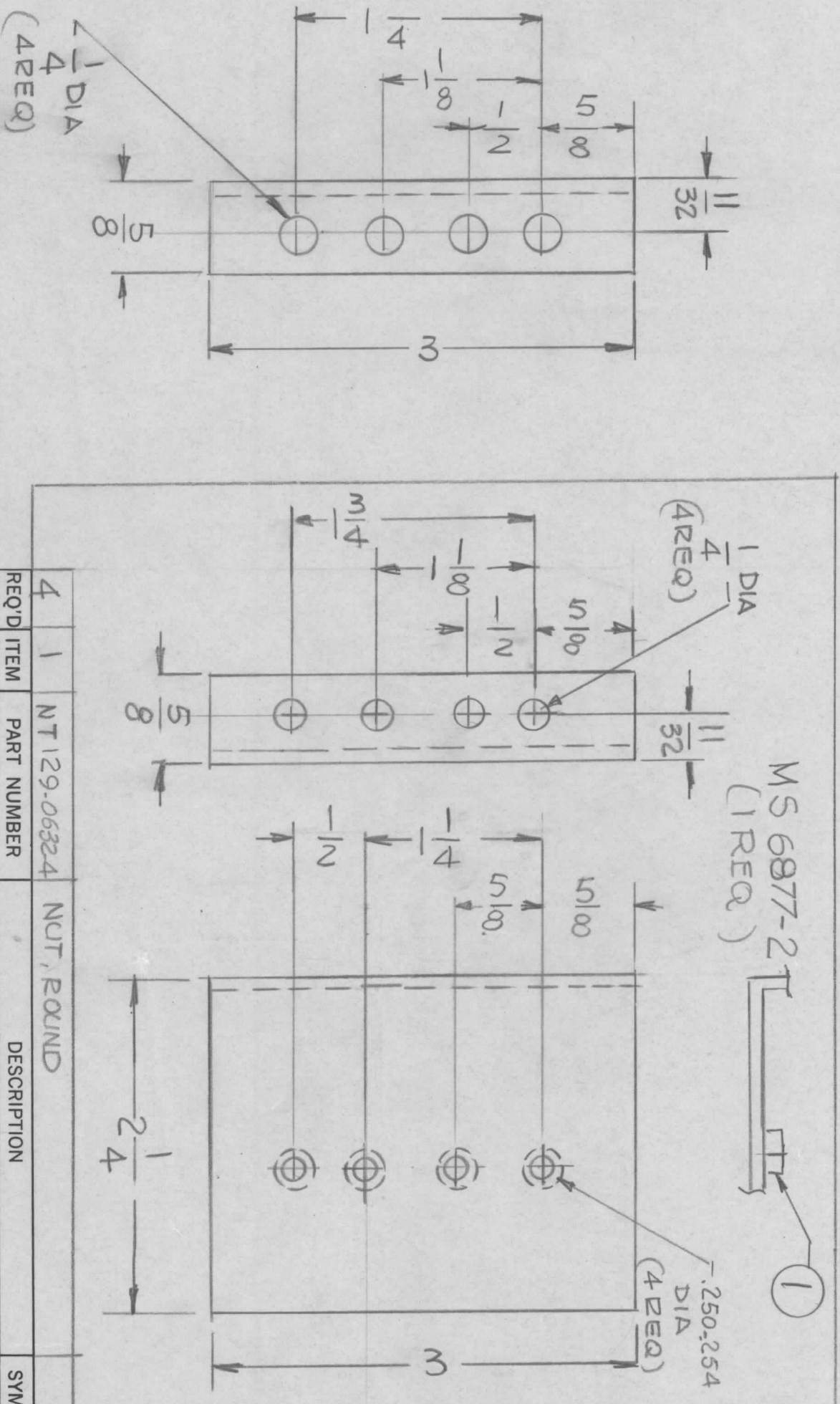
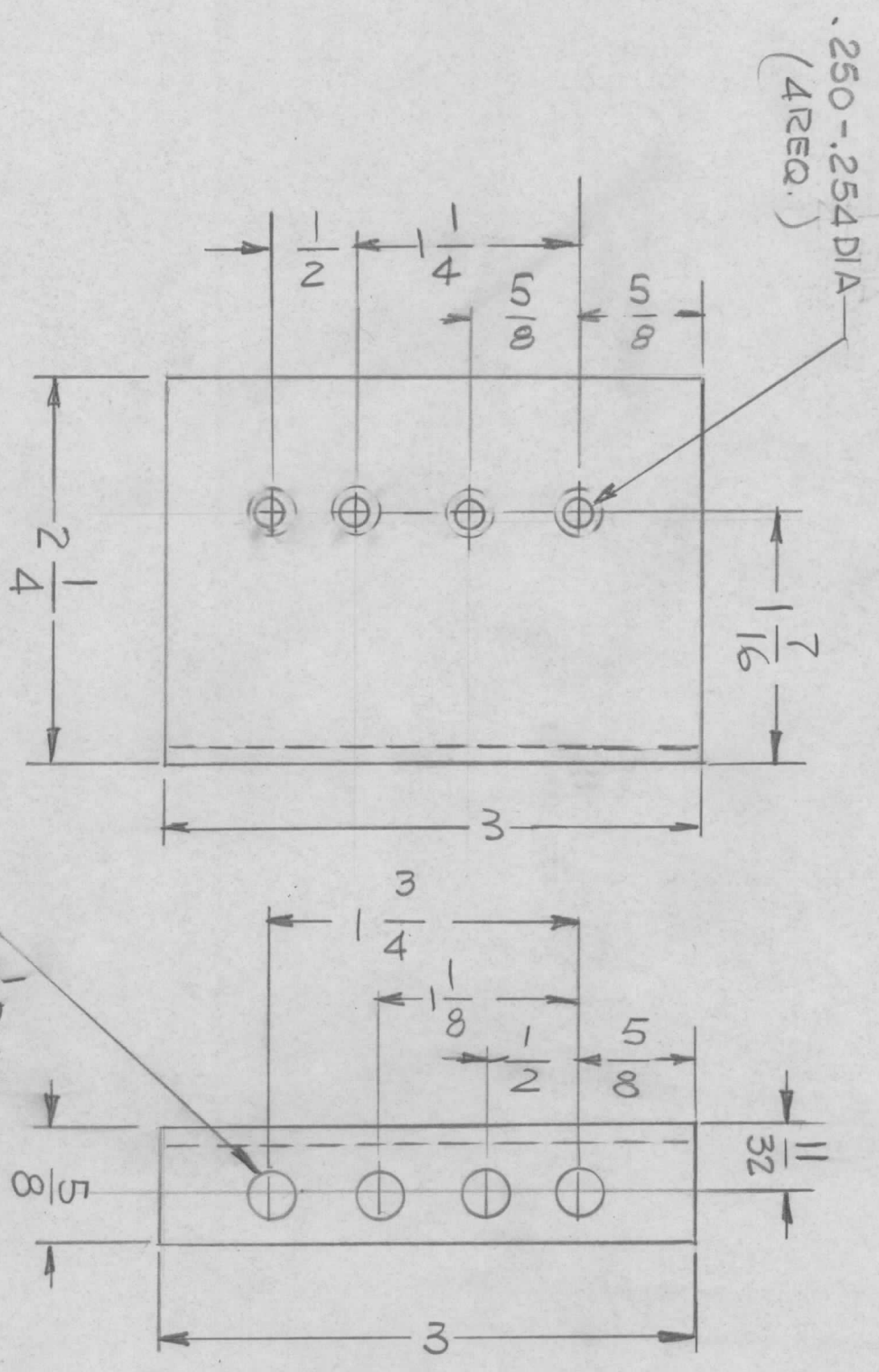
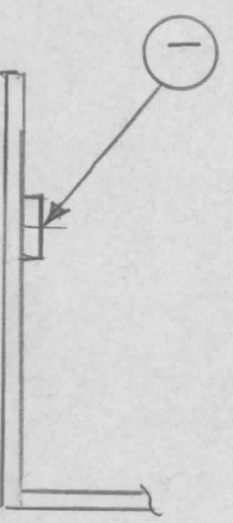
82679 MSG861

NOTICE TO PERSONS RECEIVING THIS DRAWING  
 THE TECHNICAL MATERIEL CORPORATION claims proprietary right in the material disclosed hereon. This drawing is issued in confidence for engineering information only and may not be reproduced or used to manufacture anything shown hereon without permission from THE TECHNICAL MATERIEL CORPORATION to the user. This drawing is loaned for mutual assistance and is subject to recall at any time.





REVISIONS				DATE	APPROVED
EMN. NO.	DRAFT	CHKD	ZONE	LTR	DESCRIPTION
~	GPL	Offs		Ø	ORIGINAL RELEASE FOR PRODUCTION
					APR 24 1978



MS 6877-1  
(1 REQ.)

MS 6877-2  
(1 REQ.)

UNLESS OTHERWISE SPECIFIED:

1. USE MATERIAL THICKNESS FOR MAXIMUM RADIUS ON ALL BENDS.
2. ALL ANGULAR BENDS 90 DEGREES.
3. REMOVE ALL BURRS AND SHARP EDGES.
4. MOUNT INSERTS AFTER FINISHING.

QTY / UNIT	MODEL USED ON	ASS'Y NO.
	TT2-1000J	
APPLICATION		
CODE		

NOTICE TO PERSONS RECEIVING THIS DRAWING  
THE TECHNICAL MATERIEL CORPORATION claims proprietary right in the material disclosed hereon. This drawing is issued in confidence for engineering information only and may not be reproduced or used to manufacture anything shown hereon without permission from THE TECHNICAL MATERIEL CORPORATION to the user. This drawing is loaned for mutual assistance and is subject to recall at any time.

UNLESS OTHERWISE SPECIFIED DIMENSIONS ARE IN INCHES AND INCLUDE CHEMICALLY APPLIED OR PLATED FINISHES

DECIMALS	TOLS.	FRACTIONS	ANGLES
.X ± .05		1/64	° .30'
.XX ± .01			
.XXX ± .005			

FINISH S404  
VELURIDITE

FINAL APPROVAL	MECH. DES.	ELECT. DES.	CHECKED	DRAWN
				G.D.L.

DATE DATE DATE DATE DATE  
**THE TECHNICAL MATERIEL CORP.**  
 MAMARONECK, NEW YORK  
**BRACKET MTG. TR**

LIST OF MATERIAL

REQ'D ITEM	PART NUMBER	DESCRIPTION	SYM.
4	1	NT129-06324 NUT, ROUND	

SIZE	CODE IDENT. NO.	DWG NO.	ISSUE
B	82679	MS 6877	Ø
SCALE	1:1	SHEET	OF



