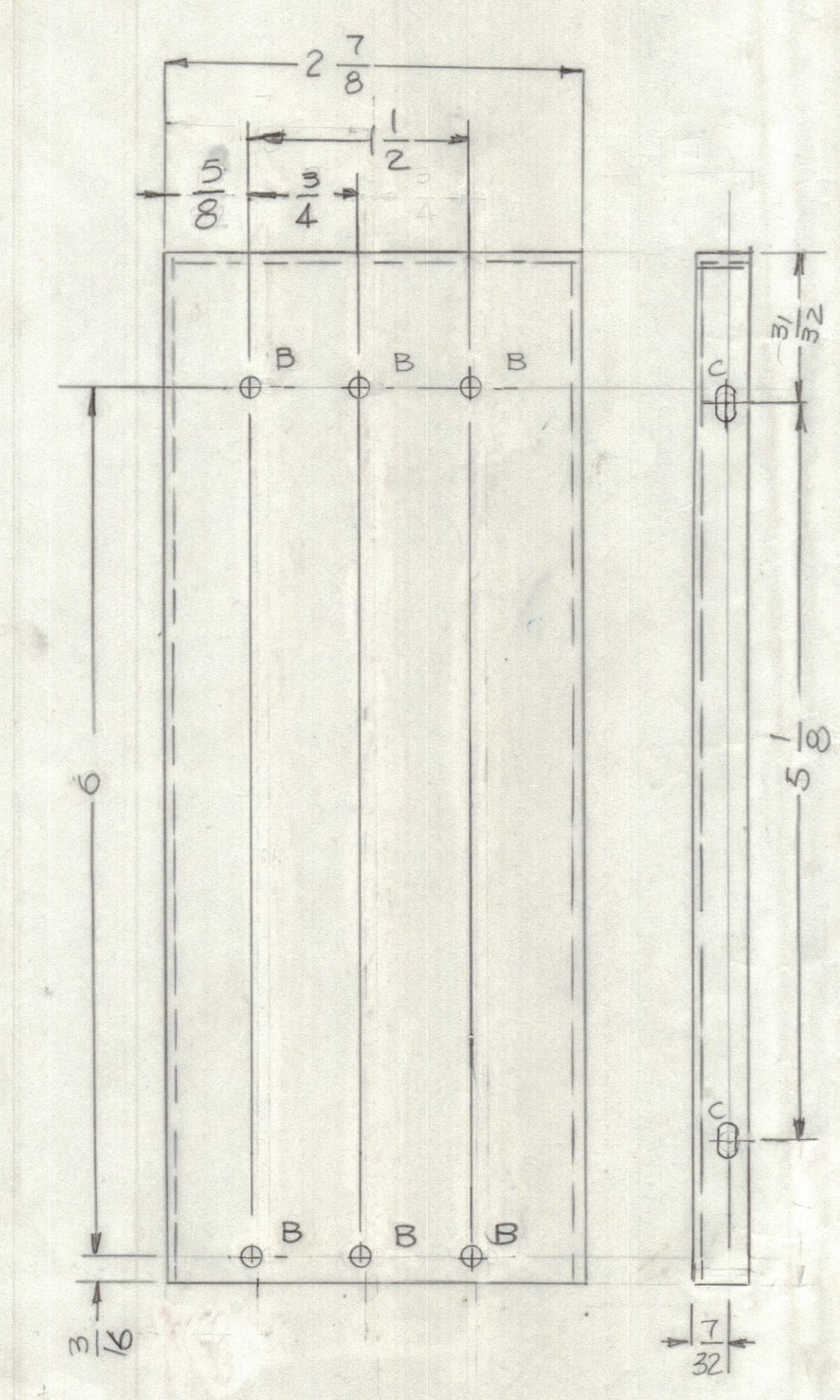
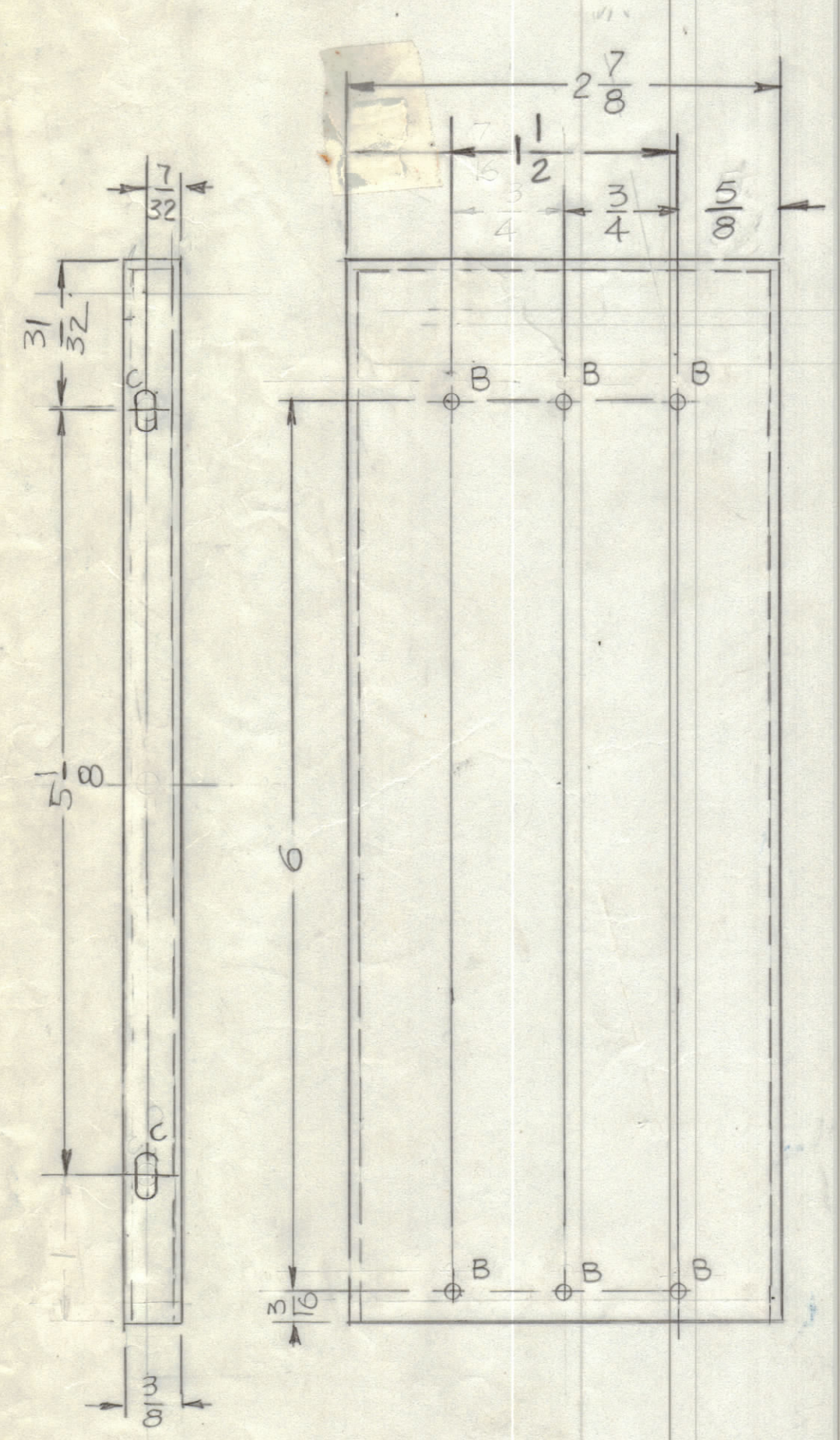
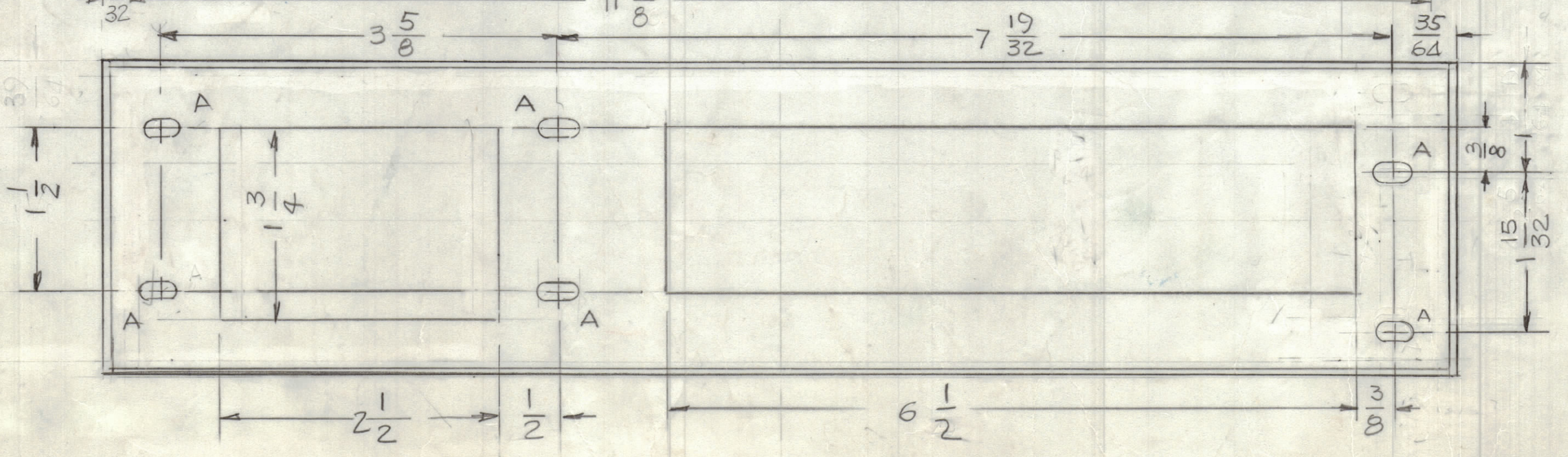
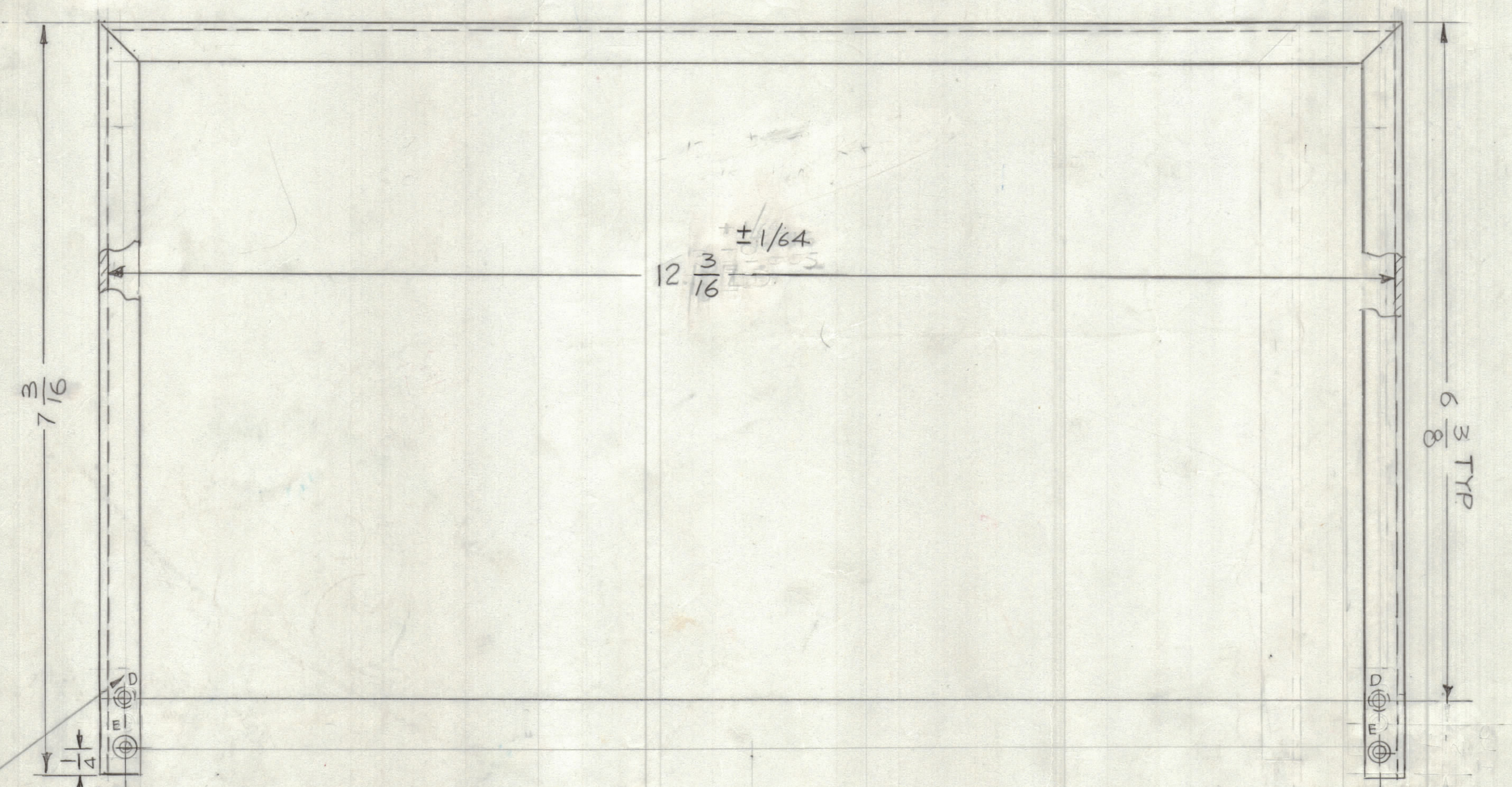
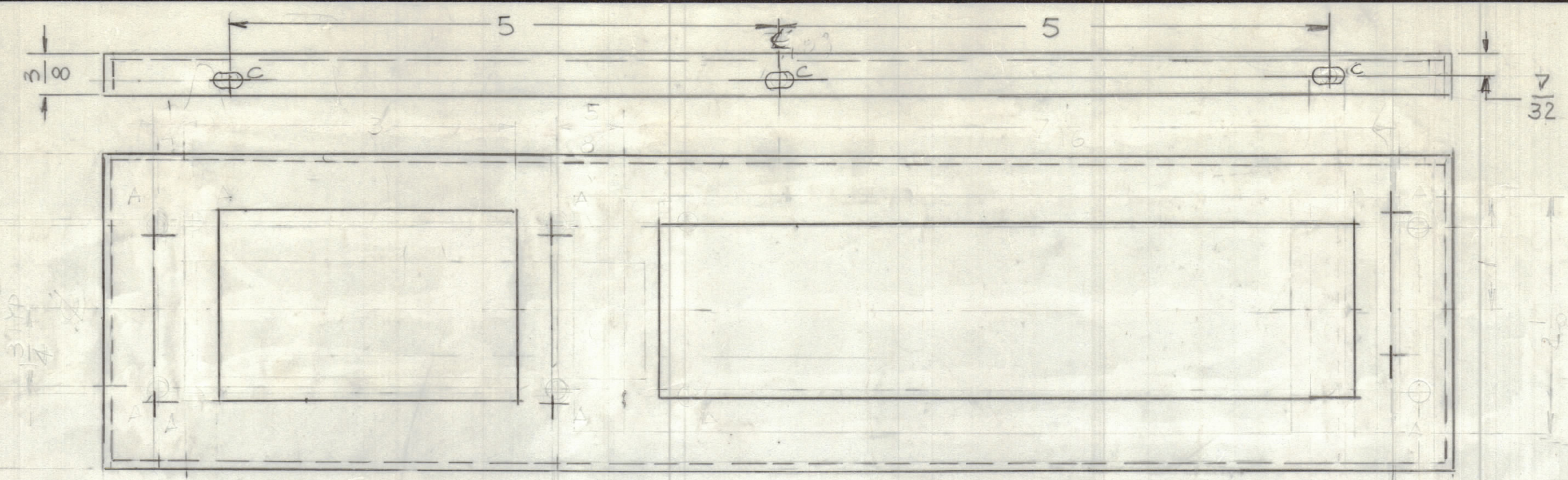


REVISIONS							
E.M.N.NO	DRAFT	CHKD	ZONE	LTR	DESCRIPTION	DATE	APPROVED
	GDL			X1	DIMS. 7/32 WAS 1/4 & 11/8 WAS 11 13/16	7-5-78	
				X2	B HOLE WAS 3/8	7-14-78	
	GDL			X3	"C" HOLE WAS 9/64 DIA - RELOCATE ON LEFT & RIGHT SIDES "C" HOLES"	7-4-78	



- HOLES
- A - 5/32 x 5/16 SLOT 6 REQ'D
 - B - 1/8" DIA 12 REQ'D
 - C - 9/64 x 9/32 7 REQ'D
 - D - .191 - .196 DIA 2 REQ'D
 - E - .120 DIA C'SHK 82° TO .230 DIA. 2 REQ'D

MARK TMC PART NUMBER
1/8 HIGH GOTHIC WITH LATEST
REVISION LETTER

- UNLESS OTHERWISE SPECIFIED:
1. USE MATERIAL THICKNESS FOR MAXIMUM RADIUS ON ALL BENDS.
 2. ALL ANGULAR BENDS 90 DEGREES.
 3. REMOVE ALL BURRS AND SHARP EDGES.
 4. MOUNT INSERTS AFTER FINISHING.

1	DPC-10	
QTY / UNIT	MODEL USED ON	ASS'Y NO.
	APPLICATION	
	CODE	
<small>NOTICE TO PERSONS RECEIVING THIS DRAWING</small> <small>THE TECHNICAL MATERIEL CORPORATION claims proprietary right in the material disclosed hereon. This drawing is issued in confidence for engineering information only and may not be reproduced or used to manufacture anything shown hereon without permission from THE TECHNICAL MATERIEL CORPORATION to the user. This drawing is loaned for mutual assistance and is subject to recall at any time.</small>		

UNLESS OTHERWISE SPECIFIED
DIMENSIONS ARE IN INCHES
AND INCLUDE CHEMICALLY APPLIED
OR PLATED FINISHES

TOLERANCES ON

DECIMALS	FRACTIONS
X ± .05	± 1/64
XX ± .01	ANGLES
XXX ± .005	± 0° - 30'

MATERIAL .064 THK
ALUM. 5052 -H32
FINISH
3404 YEL. IRIDITE

2	1	NT129 0632-4	NUT ROUND	D
QTY. REQ.	ITEM	PART NO.	DESCRIPTION	SYMBOL
LIST OF MATERIAL				
FINAL APPROVAL	DATE	THE TECHNICAL MATERIEL CORP.		
MECH. DES.	DATE	MAMARONECK, NEW YORK		
ELECT. DES.	DATE	CHASSIS PCB		
CHECKED	DATE			
DRAWN	DATE			
MATERIAL		SIZE	CODE IDENT NO.	DWG NO.
		D	82679	MS 6883
		SCALE		ISSUE
				X3
		SHEET		OF