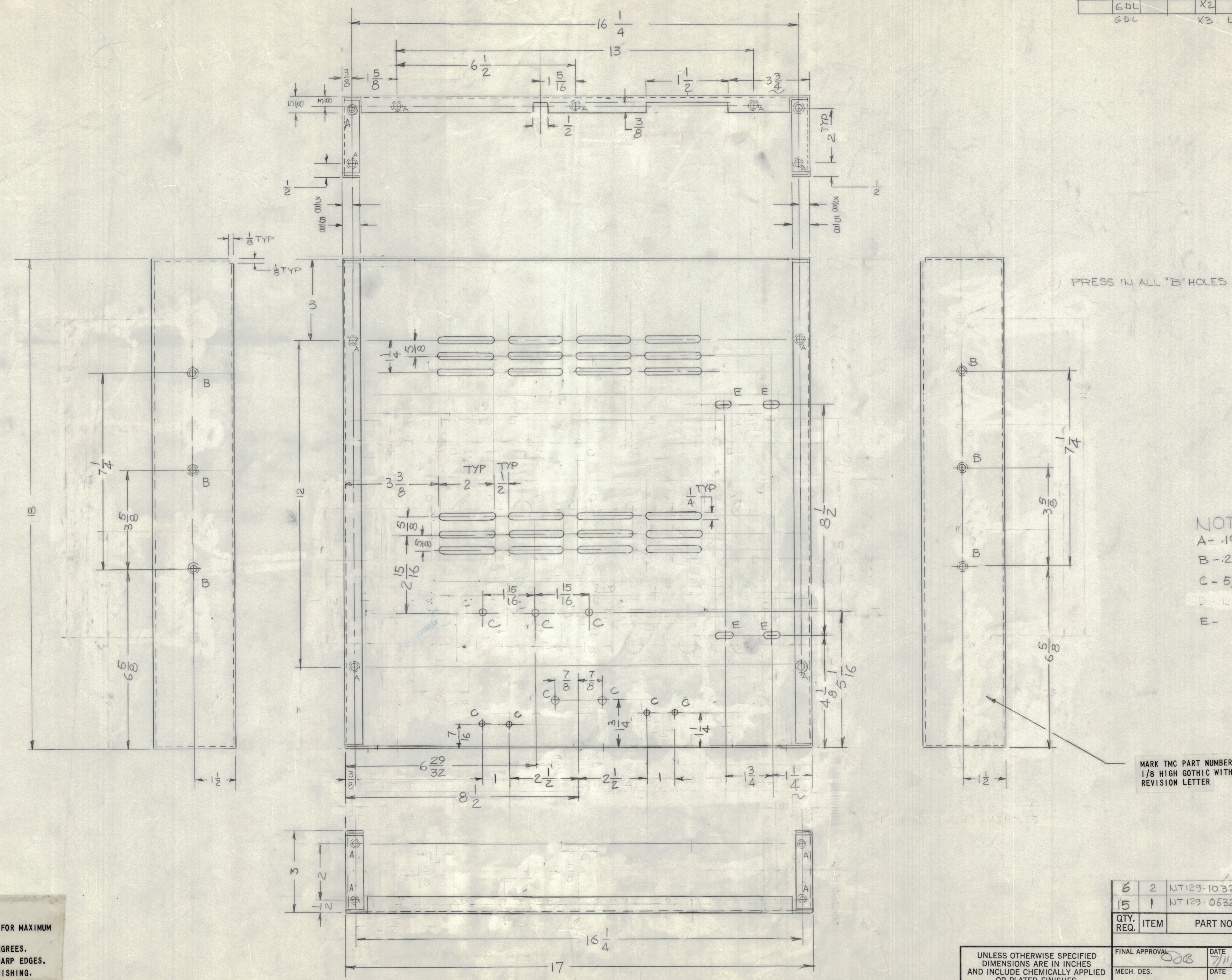


REVISIONS						
E.M.N.O.	DRAFT	CHKD	ZONE	LTR	DESCRIPTION	DATE
GDL				X1	MODIFIED	4-25-78
GDL				X2	REVISED & UPDATED	6-30-78
GDL				X3	LOCATION "E" HOLES & TWO "C" HOLES CLARIFIED	7-5-78



SIZE	QTY	LETTER	DESCRIPTION
A	15		1/8" - 1/4" DIA
B	6		3/8" - 1/2" DIA
C	9		5/32" DIA
D	12		1/8" DIA

NOTE:
 A - .191 - .196 DIA 15 REQ'D
 B - .251 - .254 DIA 6 REQ'D
 C - 5/32 - DIA 9 REQ'D
 D - 1/8 DIA TO 1/4 DIA 12 REQ'D
 E - 13/64 X 13/32 SLOT 4 REQ'D

MARK TMC PART NUMBER
 1/8 HIGH GOTHIC WITH LATEST
 REVISION LETTER

- UNLESS OTHERWISE SPECIFIED:
1. USE MATERIAL THICKNESS FOR MAXIMUM RADIUS ON ALL BENDS.
 2. ALL ANGULAR BENDS 90 DEGREES.
 3. REMOVE ALL BURRS AND SHARP EDGES.
 4. MOUNT INSERTS AFTER FINISHING.

QTY. REQ.	ITEM	PART NO.	DESCRIPTION	SYMBOL
6	2	NT129-1032-4	NUT, ROUND	B
15	1	NT129-0632-4	NUT, ROUND	A

LIST OF MATERIAL

THE TECHNICAL MATERIEL CORP.
 MAMARONECK, NEW YORK

CHASSIS, WRAP AROUND
 DPC-10

FINAL APPROVAL	DATE
MECH. DES.	DATE
ELECT. DES.	DATE
CHECKED	DATE
DRAWN	DATE

SIZE	CODE	IDENT NO.	DWG NO.	ISSUE
D		82679	MS 6867	X3

SCALE 1/2 SHEET OF

1 DPC-10		
QTY / UNIT	MODEL USED ON	ASS'Y NO.
APPLICATION		
CODE		
MATERIAL .064 THK 5052-H32 ALUM		
FINISH 3404 IRIDITE		

NOTICE TO PERSONS RECEIVING THIS DRAWING
 THE TECHNICAL MATERIEL CORPORATION claims proprietary right in the material disclosed hereon. This drawing is issued in confidence for engineering information only and may not be reproduced or used to manufacture anything shown hereon without permission from THE TECHNICAL MATERIEL CORPORATION to the user. This drawing is loaned for mutual assistance and is subject to recall at any time.