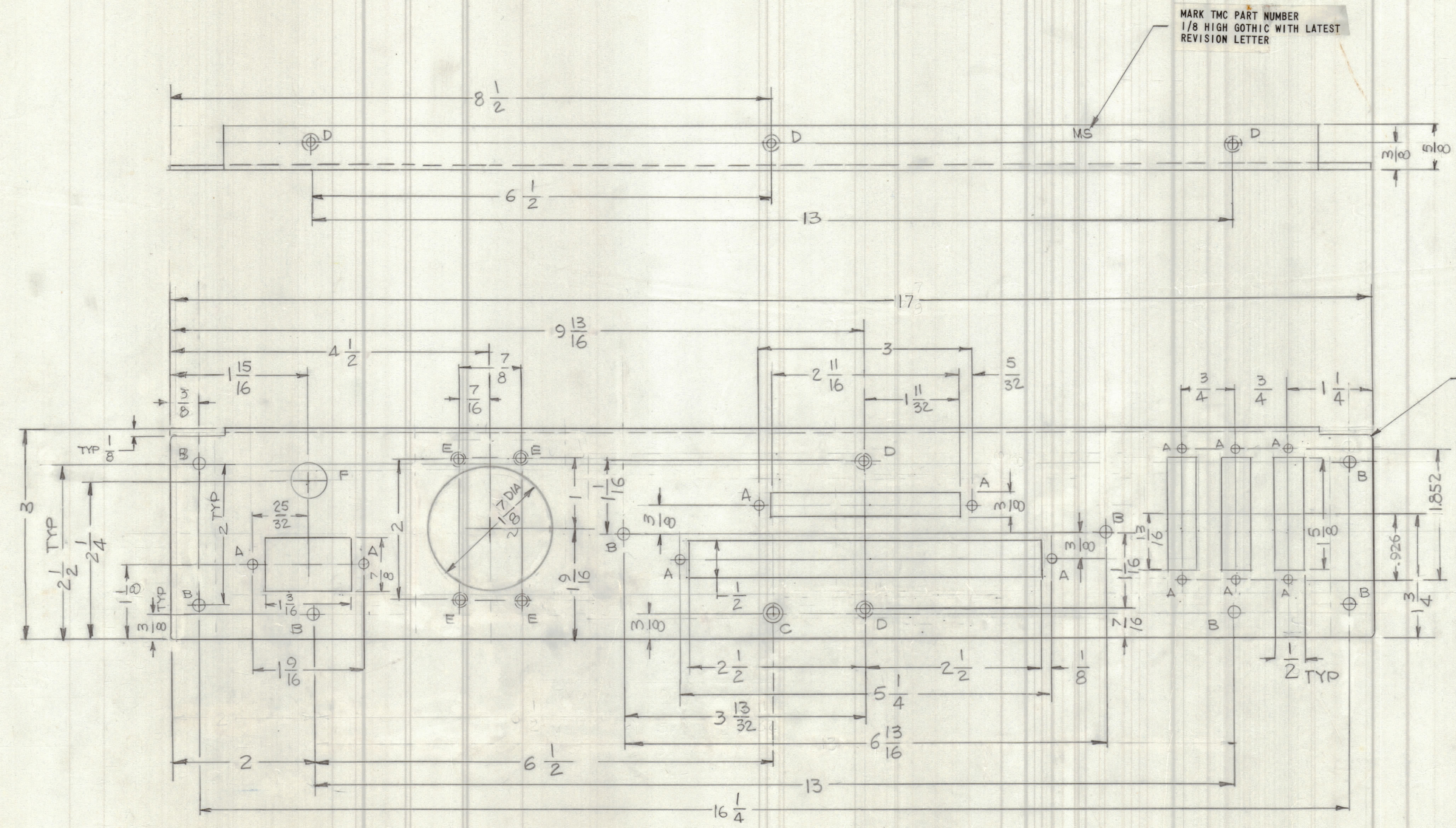


REVISIONS							
E.M.N.O	DRAFT	CHKD	ZONE	LTR	DESCRIPTION	DATE	APPROVED
	GDL			X1	REVISED & REDRAWN	6-28-78	
				X2	1 7/8 WAS 1 3/4		
	GDL			X3	7/16 DIM. ADD.	7-19-78	
	GDL			X4	CUTOUT WAS 1 5/8 x 7/16	7-28-78	



- HOLES:
- A - 9/64 DIA 12 REQ'D
 - B - 11/64 DIA 7 REQ'D
 - C - .144 DIA C'SHK 82° TO .284 DIA
 - D - .191 - .194 DIA 5 REQ'D
 - E - .161 - .164 DIA 4 REQ'D
 - F - 1/2 DIA

UNLESS OTHERWISE SPECIFIED:

1. USE MATERIAL THICKNESS FOR MAXIMUM RADIUS ON ALL BENDS.
2. ALL ANGULAR BENDS 90 DEGREES.
3. REMOVE ALL BURRS AND SHARP EDGES.
4. MOUNT INSERTS AFTER FINISHING.

REF: LD 3108

QTY.	REQ.	ITEM	PART NO.	DESCRIPTION	SYMBOL
4	2	NT129-0440-4		NUT, ROUND	F
5	1	NT129-0632-4		NUT, ROUND	D

LIST OF MATERIAL

THE TECHNICAL MATERIEL CORP.
MAMARONECK, NEW YORK

1	DPC-10	
QTY / UNIT	MODEL USED ON	ASS'Y NO.
	APPLICATION	
	CODE	

UNLESS OTHERWISE SPECIFIED DIMENSIONS ARE IN INCHES AND INCLUDE CHEMICALLY APPLIED OR PLATED FINISHES		FINAL APPROVAL GDL	DATE 7/11/78
TOLERANCES ON		ELECT. DES.	DATE
DECIMALS	FRACTIONS	CHECKED	DATE
.X ± .05	± 1/64	DRAWN	DATE
.XX ± .01	ANGLES ± 0° - 30'	GDL	6-28-78
.XXX ± .005			
MATERIAL .063 THK ALUM. 5052-H32 FINISH S404 YEL. IRIDITE		SIZE	CODE IDENT NO. DWG NO.
		D	82679 M56865
		SCALE 1:1	SHEET OF

PLATE, REAR

ISSUE X4

NOTICE TO PERSONS RECEIVING THIS DRAWING
THE TECHNICAL MATERIEL CORPORATION claims proprietary right in the material disclosed herein. This drawing is issued in confidence for engineering information only and may not be reproduced or used to manufacture anything shown hereon without permission from THE TECHNICAL MATERIEL CORPORATION to the user. This drawing is loaned for mutual assistance and is subject to recall at any time.