

4

3

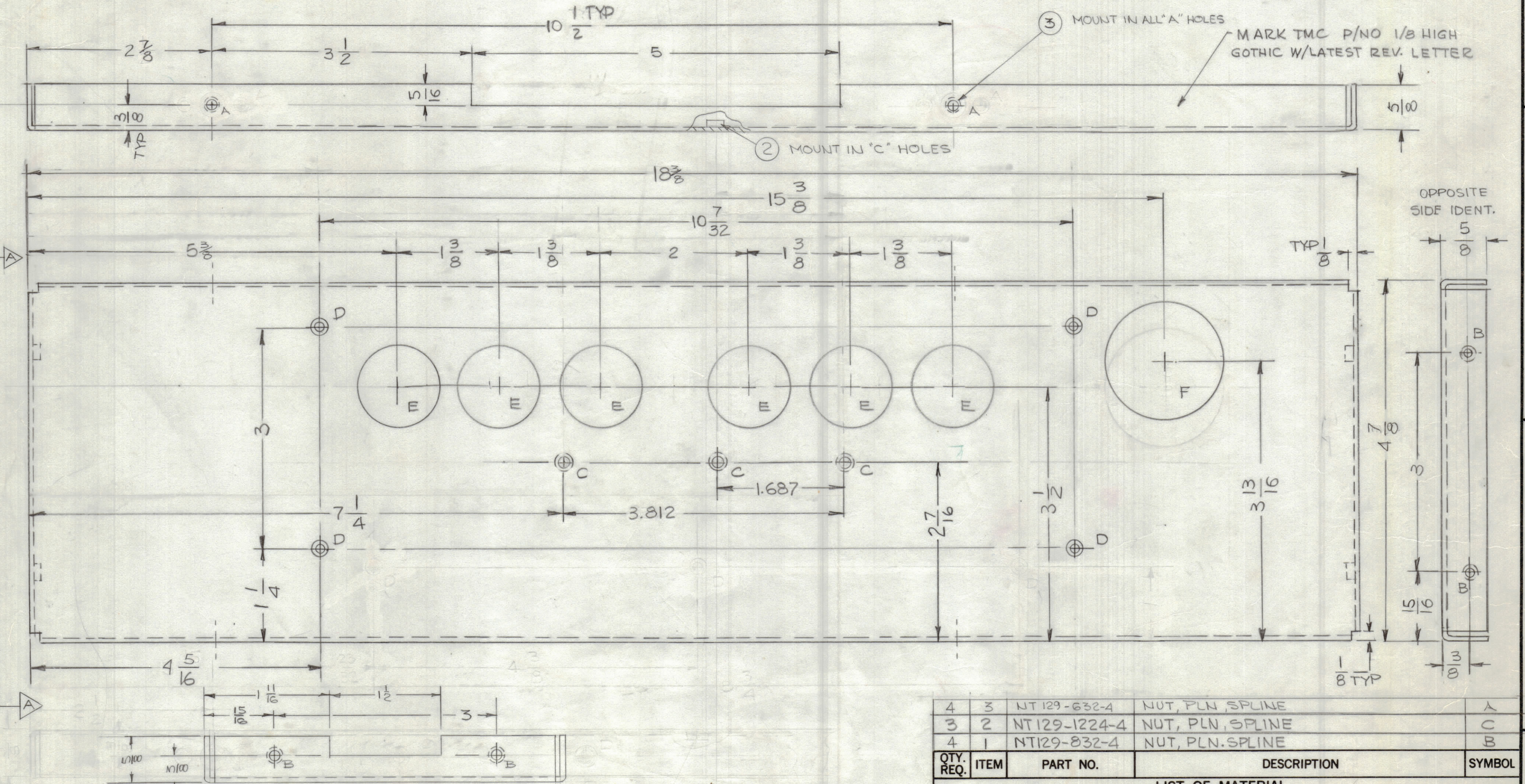
2

1

HOLES:

- A - .191 - .194 DIA 4 REQ
- B - .221 - .224 DIA 4 REQ
- C - .277 - .280 DIA 3 REQ
- D - .147 DIA ± 82° C'SNK TO .284 DIA 4 REQ
- E - 1-1/8 DIA 6 REQ
- F - 1-5/8 DIA 1 REQ.

REVISIONS						
ZONE	LTR	DESCRIPTION	DATE	DRAFT	CHK'D	APPD
	Ø	ORIGINAL RELEASE FOR PRODUCTION	6-6-78	GDL	WLB	*



SECTION "A-A"

QTY. REQ.	ITEM	PART NO.	DESCRIPTION	SYMBOL
4	3	NT129-632-4	NUT, PLN, SPLINE	A
3	2	NT129-1224-4	NUT, PLN, SPLINE	C
4	1	NT129-832-4	NUT, PLN, SPLINE	B

LIST OF MATERIAL

FINAL APPROVAL	DATE
* <i>GDL</i>	6/4/78
MECH. DES.	DATE
ELECT. DES.	DATE
CHECKED	DATE
<i>GDL</i>	11/6/78
DRAWN	DATE
G.D.L	7-12-77

THE TECHNICAL MATERIEL CORP.
MAMARONECK, NEW YORK

RIGHT SIDE PLATE

SIZE	CODE IDENT. NO.	DWG NO.	ISSUE
C	82679	MS 6818	Ø
SCALE 1:1		SHEET	OF

- UNLESS OTHERWISE SPECIFIED:
- USE MATERIAL THICKNESS FOR MAXIMUM RADIUS ON ALL BENDS.
 - ALL ANGULAR BENDS 90 DEGREES.
 - REMOVE ALL BURRS AND SHARP EDGES.
 - MOUNT INSERTS AFTER FINISHING.

INTERPRET DRAWING PER LISTED DOCUMENTS	
DIMENSIONING	MIL - STD - 8
SURFACE ROUGHNESS	MIL - STD - 10
ABBREVIATIONS	MIL - STD - 12
ELECTRONIC SYMBOLS	MIL - STD - 15
WELDING SYMBOLS	JAN - STD - 19
NEXT ASSY	USED ON
MMX02-2B	
APPLICATION	
<p>NOTICE TO PERSONS RECEIVING THIS DRAWING</p> <p>THE TMC SYSTEMS AND POWER CORPORATION claims proprietary right in the material disclosed herein. This drawing is issued in confidence for engineering information only and may not be reproduced or used to manufacture anything shown hereon without permission from THE TMC SYSTEMS AND POWER CORPORATION to the user. This drawing is loaned for mutual assistance and is subject to recall at any time.</p>	

UNLESS OTHERWISE SPECIFIED DIMENSIONS ARE IN INCHES AND INCLUDE CHEMICALLY APPLIED OR PLATED FINISHES REMOVE ALL BURRS AND SHARP EDGES	
TOLERANCES ON	
DECIMALS	FRACTIONS
.X ± .05	± 1/64
.XX ± .01	ANGLES
.XXX ± .005	± 0° - 30'
MATERIAL	063THK ALUM 5052-H32
FINISH	3404 YEL. IRIDITE

MS 6818

4

3

2

1