

4

3

2

1

REVISIONS						
ZONE	LTR	DESCRIPTION	DATE	E.M.N.NO	DRAFT	CHKD
	X	REVISED	7-13-77			
	Ø	ORIGINAL RELEASE FOR PRODUCTION	2-11-80		MAC	P.B.

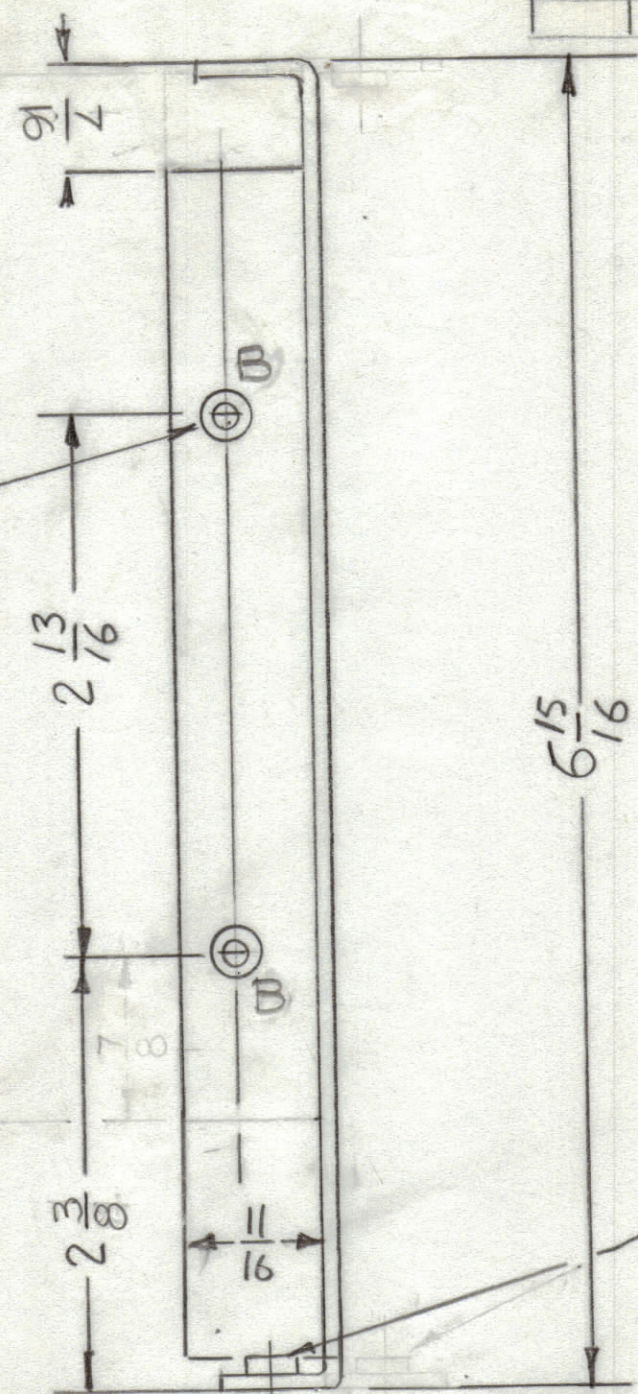
8.000 -  
2.37  
5.003

2.812 -  
2.250

2.812 \*  
2 F60

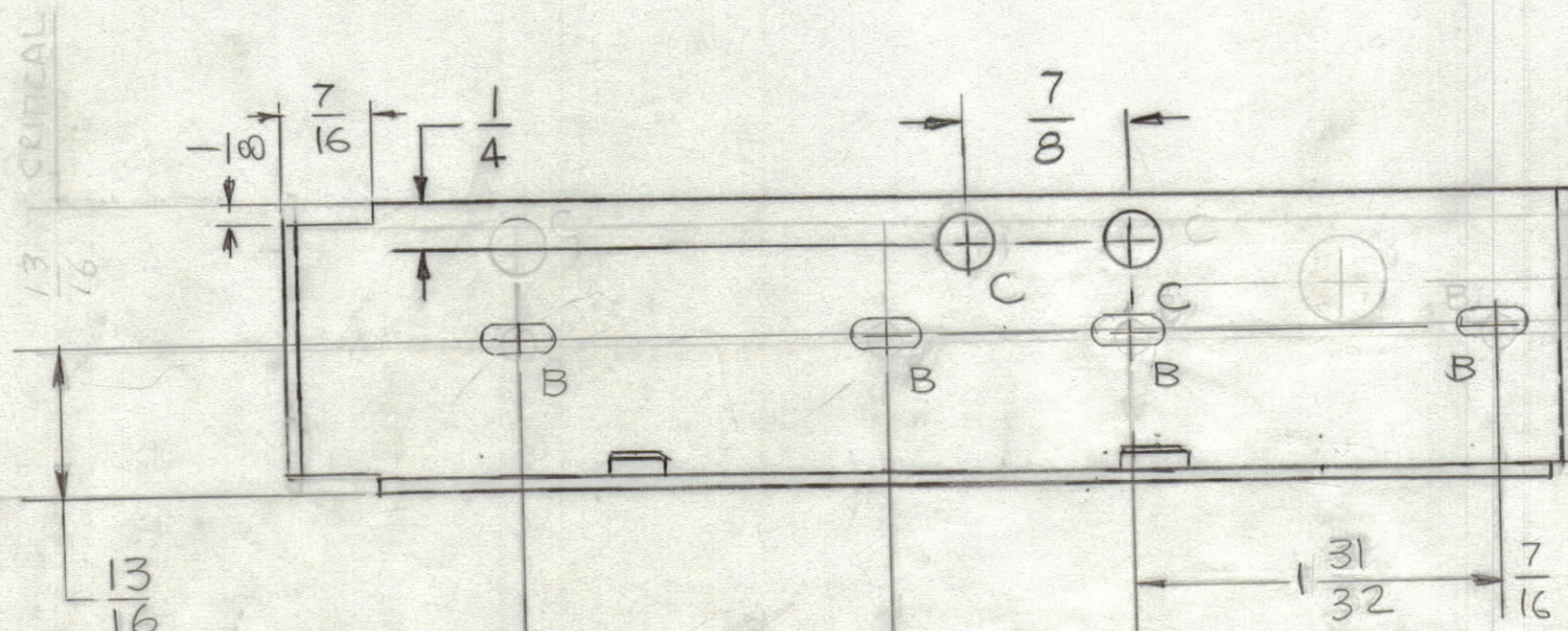
HOLE	DESCRIPTION	REQ
A	.191-.194 DIA	4
B	11/64 X 3/8 SLOT	2
C	5/16 DIA	2
D	1.00 DIA	2

TE108-1  
2REQ

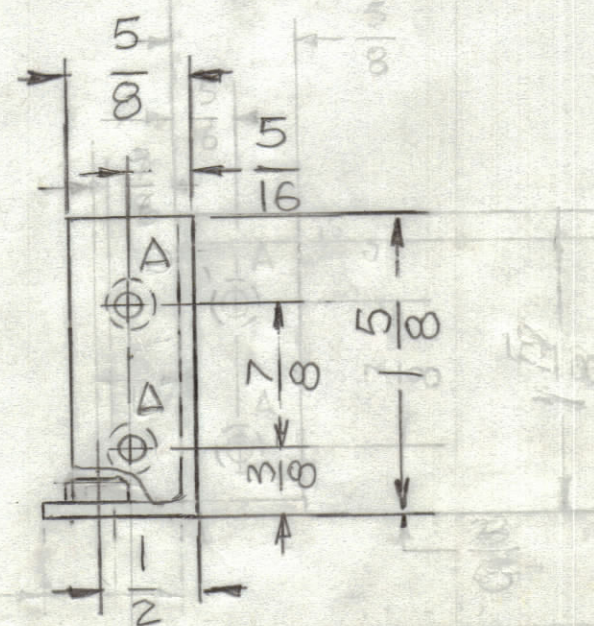


NT129 0632-4  
MOUNT AS SHOWN  
(4 REQ)

OPPOSITE LIP TYPICAL



13/16 (CRITICAL)  
LEFT SIDE MIRROR IMAGE PLUS  
"F" HO



UNLESS OTHERWISE SPECIFIED:

1. USE MATERIAL THICKNESS FOR MAXIMUM RADIUS ON ALL BENDS.
2. ALL ANGULAR BENDS 90 DEGREES.
3. REMOVE ALL BURRS AND SHARP EDGES.
4. MOUNT INSERTS AFTER FINISHING.

QTY. REQ.	ITEM	PART NO.	DESCRIPTION	SYMBOL
LIST OF MATERIAL				
THE TECHNICAL MATERIEL CORP. MAMARONECK, NEW YORK				
BRACKET, BRACE (RIGHT SIDE)				
FINAL APPROVAL		DATE		SIZE CODE IDENT.NO DWG NO. ISSUE C 82679 MS 6800 Ø
MECH. DES.		DATE		
ELECT. DES.		DATE		
CHECKED		DATE		
DRAWN		DATE		SCALE SHEET OF
MATERIAL 5052-H32 .063 AL.AL.		FINISH S404 YEL IRIDITE		

QTY / UNIT	MODEL USED ON	ASS'Y NO.
1	GRFP-Ø	
APPLICATION		
CODE		
<p style="font-size: small;">NOTICE TO PERSONS RECEIVING THIS DRAWING</p> <p style="font-size: x-small;">THE TECHNICAL MATERIEL CORPORATION claims proprietary right in the material disclosed hereon. This drawing is issued in confidence for engineering information only and may not be reproduced or used to manufacture anything shown hereon without permission from THE TECHNICAL MATERIEL CORPORATION to the user. This drawing is loaned for mutual assistance and is subject to recall at any time.</p>		