

4

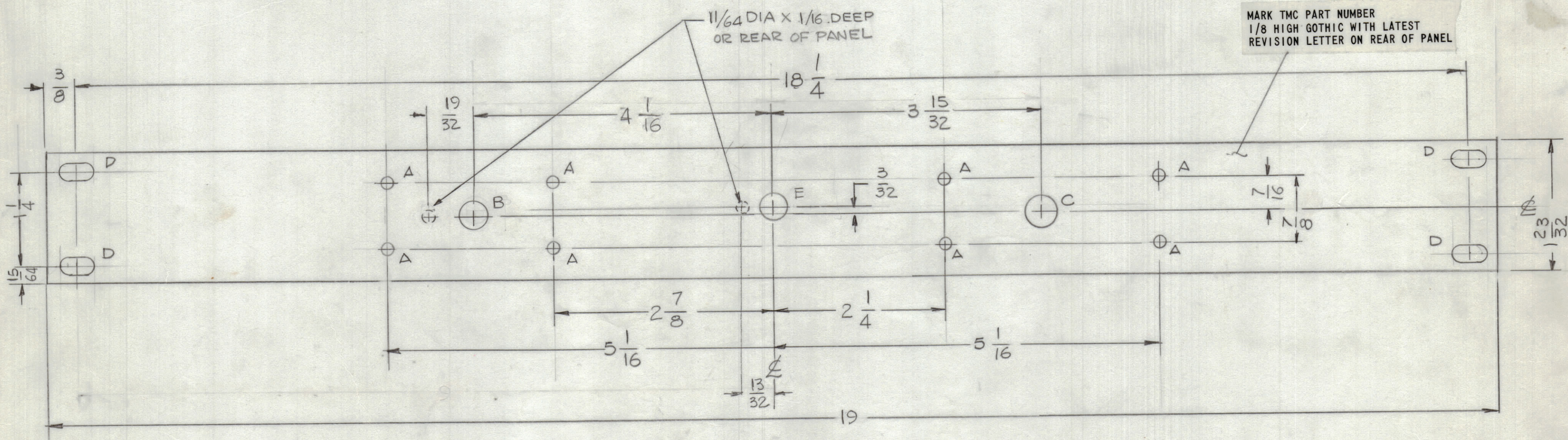
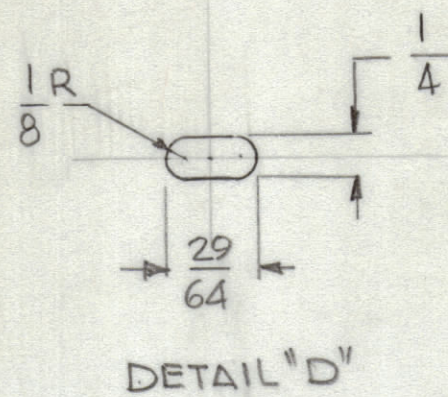
3

2

1

REVISIONS						
ZONE	LTR	DESCRIPTION	DATE	DRAFT	CHK'D	APPD
	X1	REVISED				
	X2	"E" HOLE WAS B-TWO REAR HOLES ADD.	7-26-77			
	X3	"B" HOLE RELOCATED	8-26-77	GDL		
	Ø	ORIGINAL RELEASE FOR PRODUCTION	2-11-80	WNE		FB

HOLE	DESCRIPTION	REQ
A	11/64 DIA	8
B	3/8 DIA	1
C	7/16 DIA	1
D	SEE DETAIL	4
E	13/32 DIA	1



MARK TMC PART NUMBER
1/8 HIGH GOTHIC WITH LATEST
REVISION LETTER ON REAR OF PANEL

MACHINING:

- MILL ALL EDGES.
- HOLES MUST BE DRILLED, UNLESS OTHERWISE SPECIFIED.
- LATERAL BOW OF PANEL MUST BE KEPT TO .031 TOLERANCE.
- PANEL MUST BE FREE OF ALL MACHINING MARKS, GOUGES AND SCRATCHES. IF NECESSARY, SAND FRONT OF PANEL WITH NO. 120 GRIT SANDPAPER.

FINISH NOTES:

- S404 - IRIDITE 14-2 AL-COAT.
- S114 - ZINC CHROMATE PRIMER } FRONT AND
- S115 - SMOOTH GRAY ENAMEL } EDGES ONLY

OR
PRIME AND PAINT PER CUSTOMER'S SPECIFICATIONS

REF:LD

INTERPRET DRAWING PER LISTED DOCUMENTS	
DIMENSIONING MIL - STD - 8 SURFACE ROUGHNESS MIL - STD - 10 ABBREVIATIONS MIL - STD - 12 ELECTRONIC SYMBOLS MIL - STD - 15 WELDING SYMBOLS JAN - STD - 19	
NEXT ASSY	USED ON
APPLICATION	
<p>NOTICE TO PERSONS RECEIVING THIS DRAWING THE TMC SYSTEMS AND POWER CORPORATION claims proprietary right in the material disclosed hereon. This drawing is issued in confidence for engineering information only and may not be reproduced or used to manufacture anything shown hereon without permission from THE TMC SYSTEMS AND POWER CORPORATION to the user. This drawing is loaned for mutual assistance and is subject to recall at any time.</p>	

UNLESS OTHERWISE SPECIFIED DIMENSIONS ARE IN INCHES AND INCLUDE CHEMICALLY APPLIED OR PLATED FINISHES REMOVE ALL BURRS AND SHARP EDGES	
TOLERANCES ON	
DECIMALS	FRACTIONS
.X ± .05	± 1/64
.XX ± .01	ANGLES
.XXX ± .005	± 0° - 30'
MATERIAL 1/8 THK ALUM ALY 5052-H32	
FINISH SEE NOTE	

QTY. REQ.	ITEM	PART NO.	DESCRIPTION	SYMBOL
LIST OF MATERIAL				
THE TMC SYSTEMS AND POWER CORPORATION SPRINGFIELD, VIRGINIA				
FRONT PANEL				
SIZE	CODE IDENT. NO.	DWG NO.	ISSUE	
C	24146	MS 6798	Ø	
SCALE 1:1			SHEET OF	

4

3

2

1

MS 6798