

MACHINING:

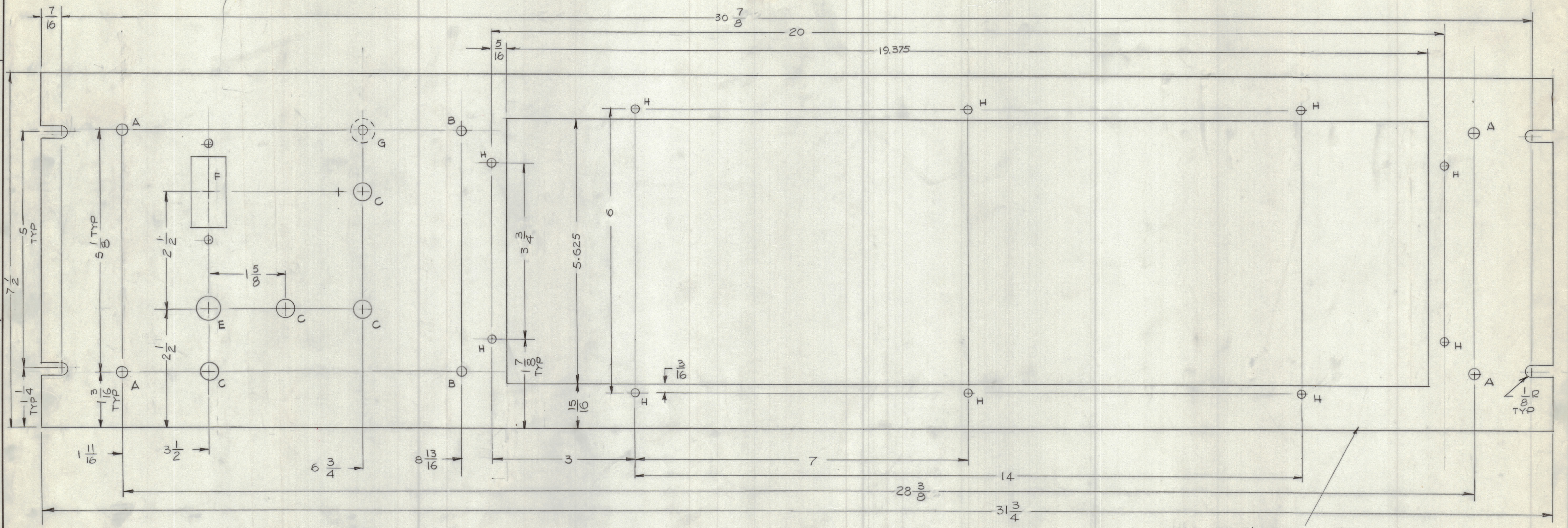
1. MILL ALL EDGES.
2. HOLES MUST BE DRILLED, UNLESS OTHERWISE SPECIFIED.
3. LATERAL BOW OF PANEL MUST BE KEPT TO .031 TOLERANCE.
4. PANEL MUST BE FREE OF ALL MACHINING MARKS, GOUGES AND SCRATCHES. IF NECESSARY, SAND FRONT OF PANEL WITH NO. 120 GRIT SANDPAPER.

FINISH NOTES:

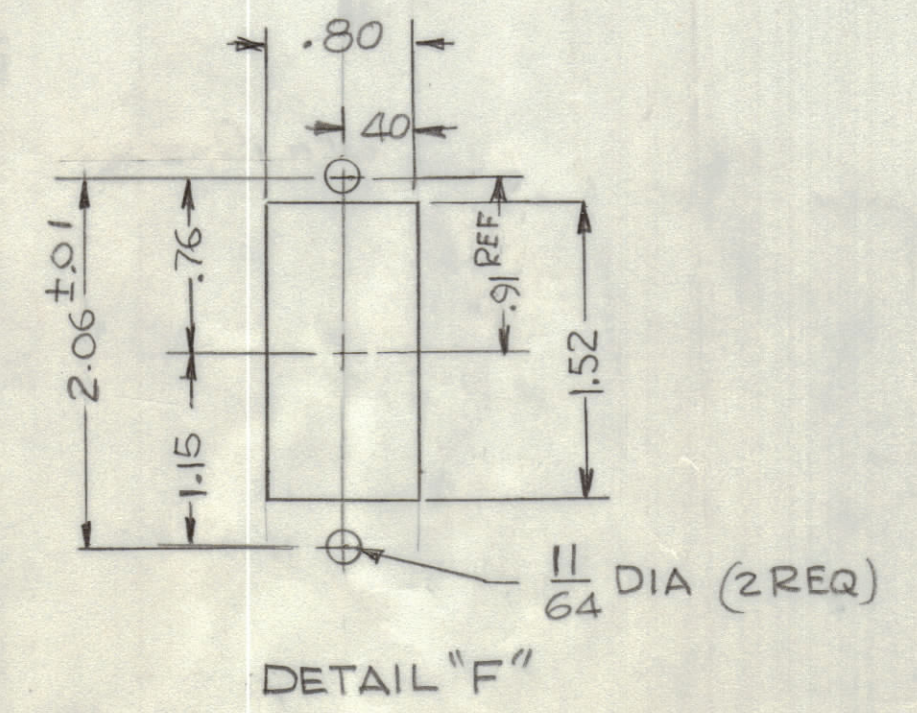
1. S404 - IRIDITE 14-2 AL-COAT.
2. S114 - ZINC CHROMATE PRIMER } FRONT AND
3. S115 - SMOOTH GRAY ENAMEL } EDGES ONLY

OR
PRIME AND PAINT PER CUSTOMER'S SPECIFICATIONS

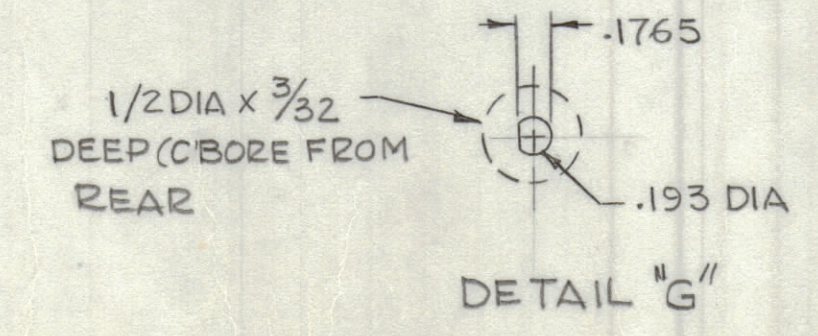
REVISIONS					DATE	APPROVED
E.M.N.O	DRAFT	CHKD	ZONE	LTR	DESCRIPTION	
					ORIGINAL RELEASE FOR PRODUCTION	12/12/84



MARK TMC P/NO. MS 1/8 HIGH
GOTHIC W/LATEST REV LETTER
ON REAR



HOLE	DESCRIPTION	REQ
A	15/64 DIA	4
B	13/64 DIA	2
C	3/8 DIA	4
D	1/8 x 1/16 DEEP REAR PANEL	1
E	15/32 DIA	1
F	SEE DETAIL	1
G	SEE DETAIL	1
H	11/64 DIA	10



REF: LD3070

QTY / UNIT	MODEL USED ON	ASS'Y NO.
1	MFR-10KE	
APPLICATION		
CODE		
MATERIAL - 1/8 ALUM		
2024 -T3		
FINISH		
SEE NOTE		

QTY. REQ.	ITEM	PART NO.	DESCRIPTION	SYMBOL
LIST OF MATERIAL				
THE TECHNICAL MATERIEL CORP. MAMARONECK, NEW YORK				
PANEL, FRONT				
UNLESS OTHERWISE SPECIFIED DIMENSIONS ARE IN INCHES AND INCLUDE CHEMICALLY APPLIED OR PLATED FINISHES		FINAL APPROVAL	DATE	
TOLERANCES ON		MECH. DES.	DATE	
DECIMALS ± .05		ELECT. DES.	DATE	
FRACTIONS ± 1/64		CHECKED	DATE	
XX ± .01		DRAWN	DATE	
ANGLES ± 0° -30'				
XXX ± .005				
SIZE	CODE	IDENT NO.	DWG NO.	ISSUE
D	82679	MS	6796	
SCALE 1:1		SHEET OF		

NOTICE TO PERSONS RECEIVING THIS DRAWING
THE TECHNICAL MATERIEL CORPORATION claims proprietary right in the material disclosed hereon. This drawing is issued in confidence for engineering information only and may not be reproduced or used to manufacture anything shown hereon without permission from THE TECHNICAL MATERIEL CORPORATION to the user. This drawing is loaned for mutual assistance and is subject to recall at any time.