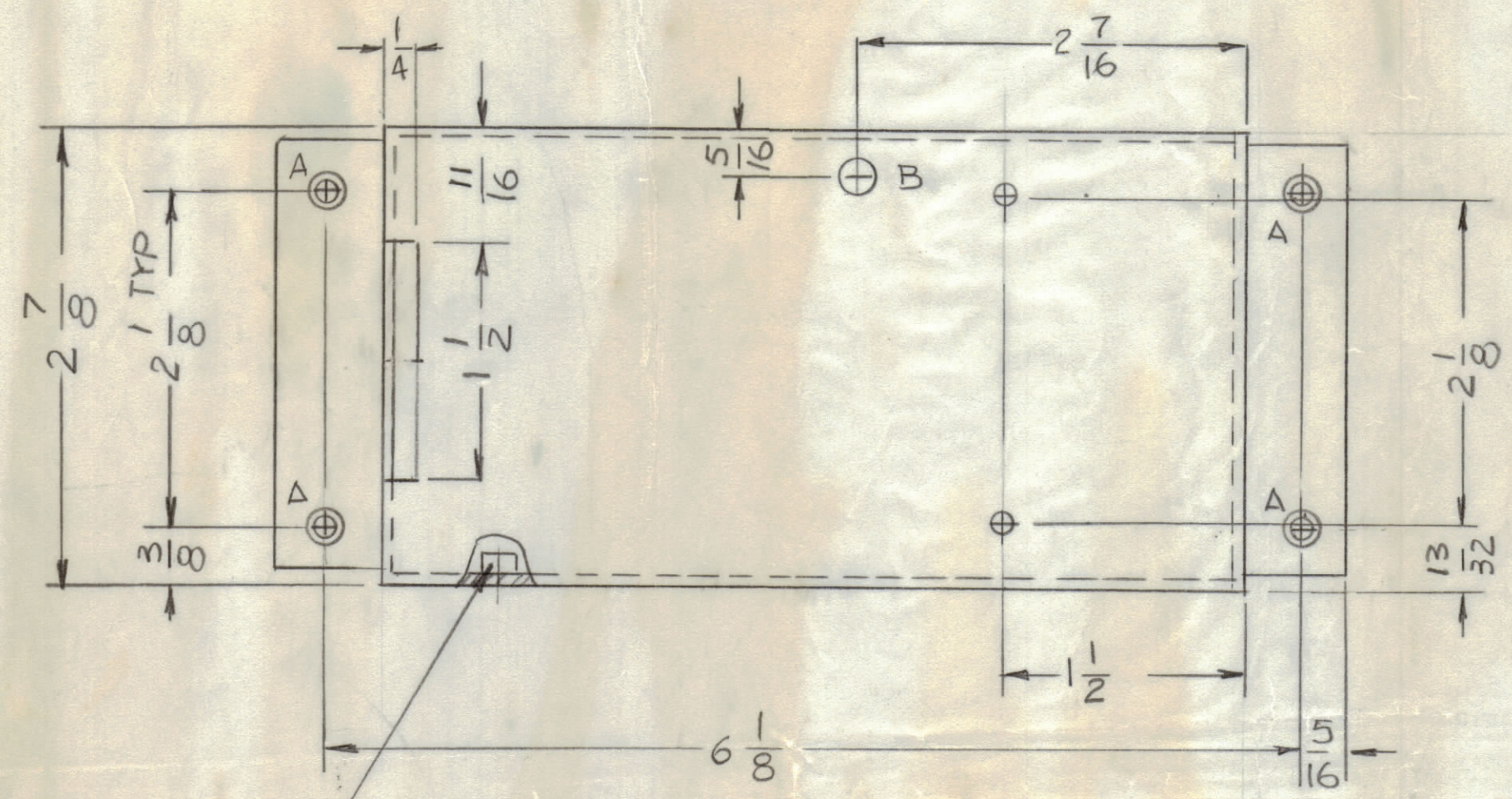
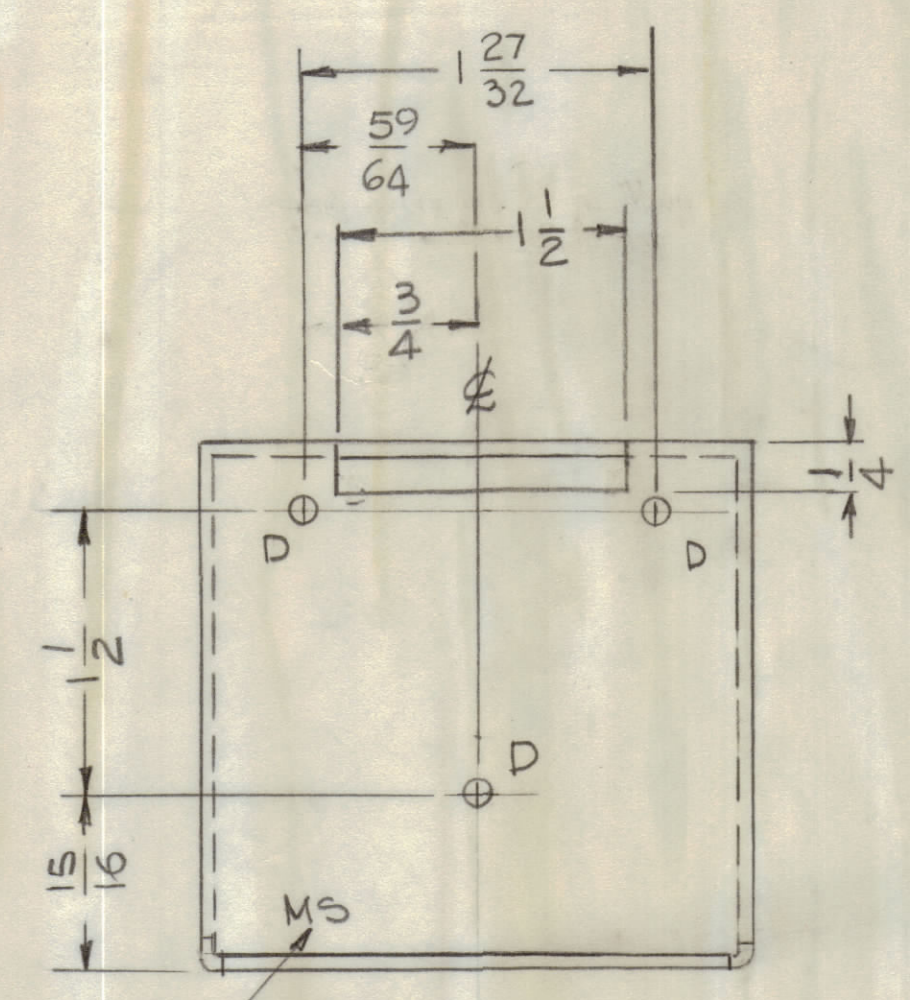


REVISIONS							
EM.N.NO	DRAFT	CHKD	ZONE	LTR	DESCRIPTION	DATE	APPROVED
77	du				ORIGINAL RELEASE	9-22-80	

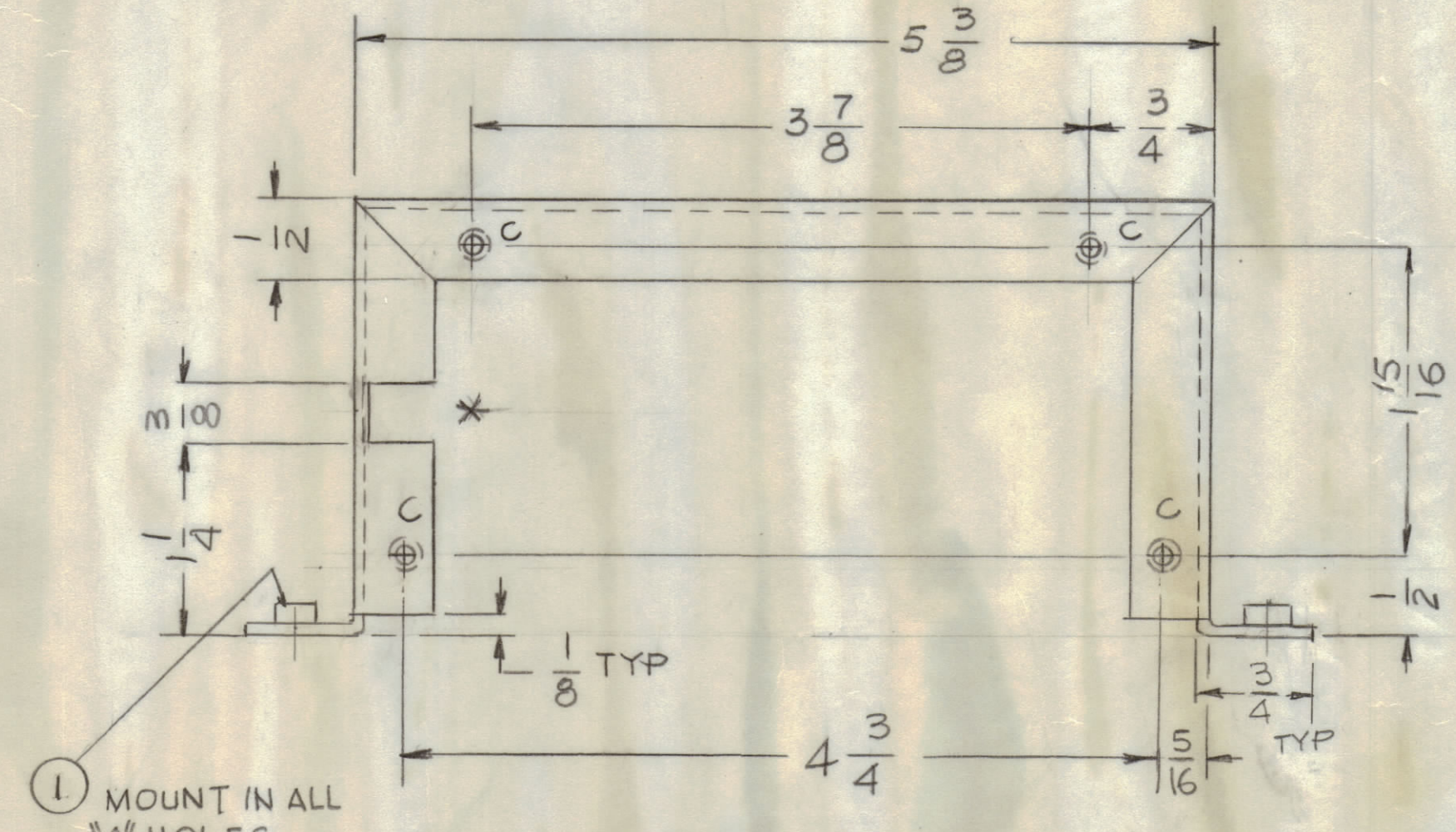


② MOUNT IN ALL "C" HOLES

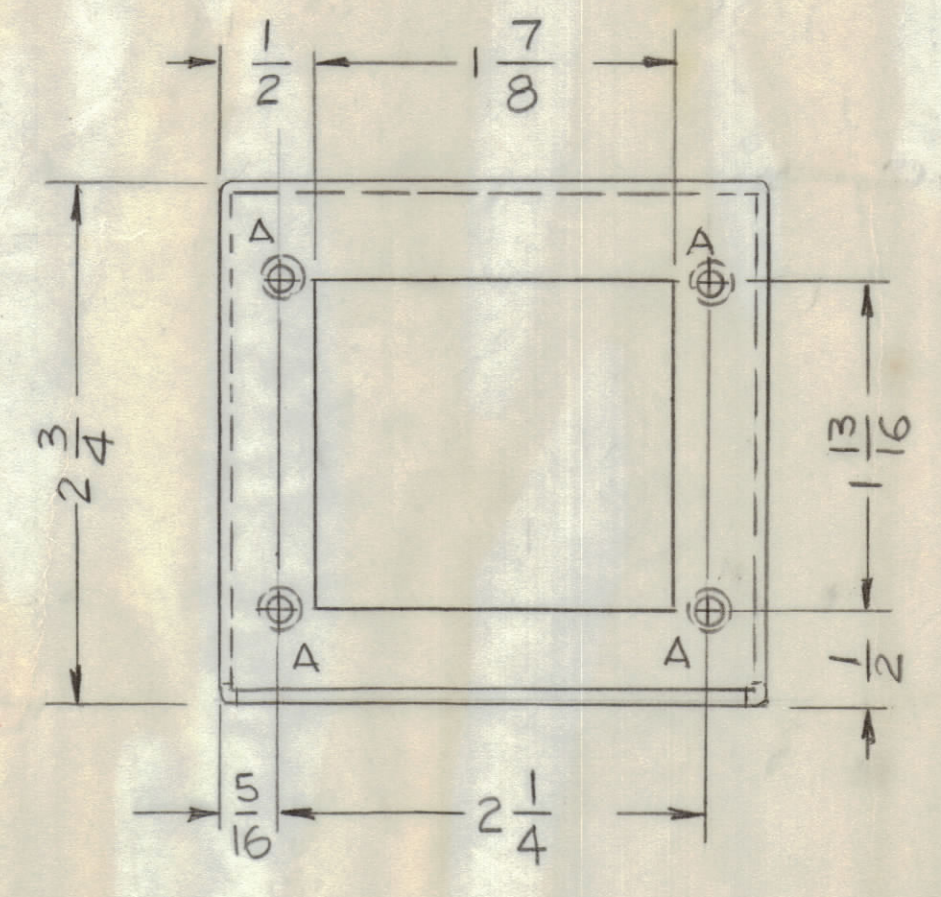
- HOLES -
- A - .191 - .194 DIA 8 REQ.
  - B - 1/4 DIA 1 REQ.
  - C - .161 - .164 DIA 8 REQ.
  - D - 11/64 DIA 3 REQ.



MARK TMC PART NUMBER  
1/8 HIGH GOTHIC WITH LATEST  
REVISION LETTER



① MOUNT IN ALL "A" HOLES



\* OPPOSITE SIDE IDENTICAL  
WITHOUT CUTOUT

- UNLESS OTHERWISE SPECIFIED:
1. USE MATERIAL THICKNESS FOR MAXIMUM RADIUS ON ALL BENDS.
  2. ALL ANGULAR BENDS 90 DEGREES.
  3. REMOVE ALL BURRS AND SHARP EDGES.
  4. MOUNT INSERTS AFTER FINISHING.

QTY. REQ.	ITEM	PART NO.	DESCRIPTION	SYMBOL
8	2	NT129-0440-4	NUT PLN SPLINE	C
8	1	NT129-0632-4	NUT PLN SPLINE	A

LIST OF MATERIAL

FINAL APPROVAL	DATE
MECH. DES.	DATE
ELECT. DES.	DATE
CHECKED	DATE
DRAWN	DATE
G.D.L.	1-17-77

THE TECHNICAL MATERIEL CORP.  
MAMARONECK, NEW YORK

CHASSIS, TUNE CAP

1	HFTA-10K	ΔX 5218
QTY / UNIT	MODEL USED ON	ASS'Y NO.
	APPLICATION	
	CODE	

UNLESS OTHERWISE SPECIFIED  
DIMENSIONS ARE IN INCHES  
AND INCLUDE CHEMICALLY APPLIED  
OR PLATED FINISHES

TOLERANCES ON

DECIMALS	FRACTIONS
.X ± .05	± 1/64
.XX ± .01	ANGLES
.XXX ± .005	± 0° -30'

MATERIAL .064 THK  
ALUM 5052-H32

FINISH S404  
YEL 121DITE

SIZE	CODE	IDENT NO.	DWG NO.	ISSUE
D	82679	MS 6772		
SCALE 1:1	SHEET		OF	

NOTICE TO PERSONS RECEIVING THIS DRAWING

THE TECHNICAL MATERIEL CORPORATION claims proprietary right in the material disclosed hereon. This drawing is issued in confidence for engineering information only and may not be reproduced or used to manufacture anything shown hereon without permission from THE TECHNICAL MATERIEL CORPORATION to the user. This drawing is loaned for mutual assistance and is subject to recall at any time.