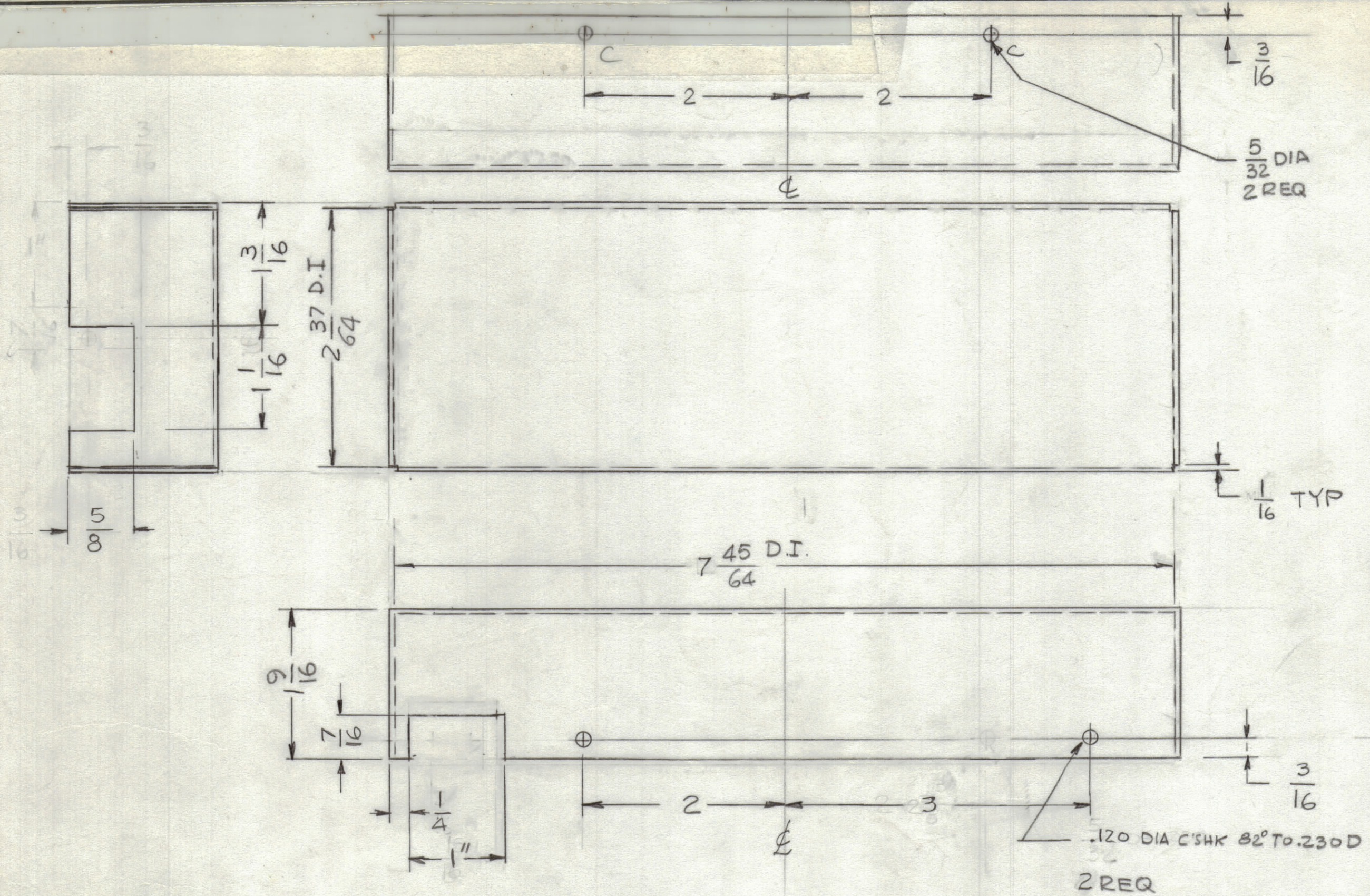


REVISIONS						
ZONE	LTR	DESCRIPTION	DATE	E.M.N.NO	DRAFT	CHKD APPD
	X1	REDRAWN & REVISED	11-24-76		GDL	
	X2	ON LEFT SIDE ONE HOLE REL.	12-20-76			
	Ø	ORIGINAL RELEASE FOR PROD.	1-17-77		GDL	JMS *



UNLESS OTHERWISE SPECIFIED:

1. USE MATERIAL THICKNESS FOR MAXIMUM RADIUS ON ALL BENDS.
2. ALL ANGULAR BENDS 90 DEGREES.
3. REMOVE ALL BURRS AND SHARP EDGES.
4. MOUNT INSERTS AFTER FINISHING.

GPR-110 A		
QTY / UNIT	MODEL USED ON	ASS'Y NO.
APPLICATION		
CODE		
<small>NOTICE TO PERSONS RECEIVING THIS DRAWING</small> THE TECHNICAL MATERIEL CORPORATION claims proprietary right in the material disclosed hereon. This drawing is issued in confidence for engineering information only and may not be reproduced or used to manufacture anything shown hereon without permission from THE TECHNICAL MATERIEL CORPORATION to the user. This drawing is loaned for mutual assistance and is subject to recall at any time.		

UNLESS OTHERWISE SPECIFIED DIMENSIONS ARE IN INCHES AND INCLUDE CHEMICALLY APPLIED OR PLATED FINISHES	
TOLERANCES ON	
DECIMALS	FRACTIONS
.X ± .05	± 1/64
.XX ± .01	ANGLES
.XXX ± .005	± 0° .30'
MATERIAL .051 THK ALUM	
5052-H32	
FINISH S404	
YEL. IRIDITE	

QTY. REQ.	ITEM	PART NO.	DESCRIPTION	SYMBOL
LIST OF MATERIAL				
FINAL APPROVAL * <i>GDL</i> DATE 11/10/77 MECH. DES. DATE ELECT. DES. DATE CHECKED DATE DRAWN <i>G. DeLuna</i> DATE 12-12-76				
THE TECHNICAL MATERIEL CORP. MAMARONECK, NEW YORK COVER SHIELD PRESELECTOR				
SIZE		CODE IDENT. NO.	DWG NO.	ISSUE
C		82679	MS 6754	Ø
SCALE			SHEET	OF
			1	

MS6754 Ø B