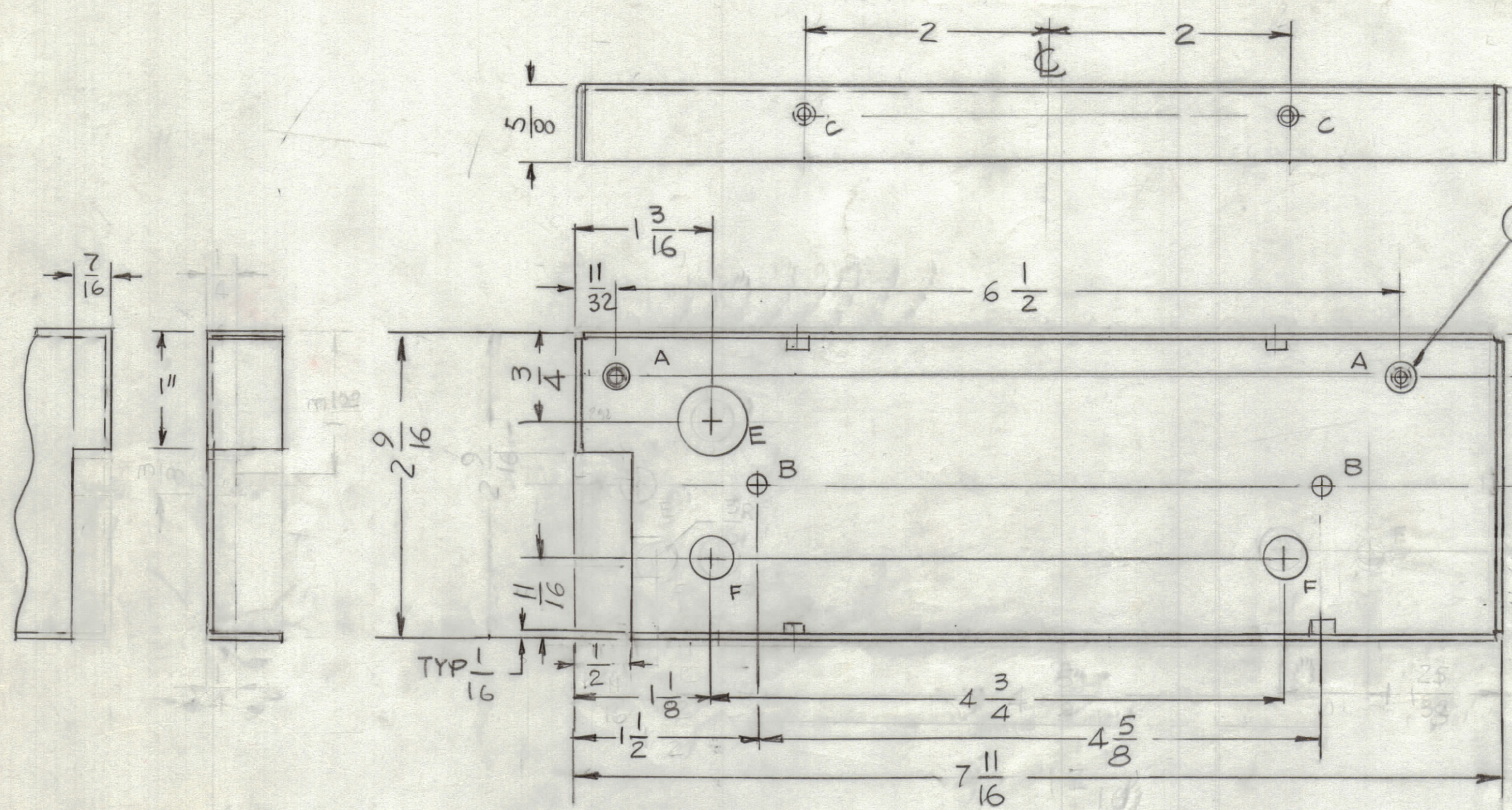
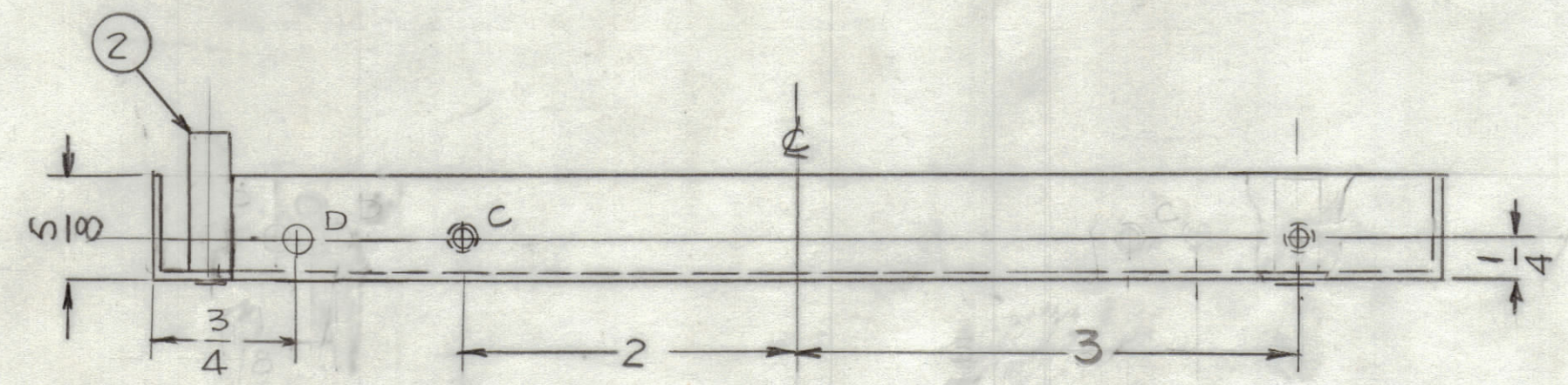


REVISIONS						
ZONE	LTR	DESCRIPTION	DATE	E.M.N.NO	DRAFT	CHKD APPD
	X2	REVISED & REDRAWN NOTCH ADD, 'D' HOLE & ONE 'C' HOLES RELOCATED - 'A' HOLES WERE C' SHK.				
	X3	REVISED	12.2076	GM		
	Ø	ORIGINAL RELEASE FOR PROD.	1-11-77	"	GDL	WJB *



**HOLES**

A - .189 DIA	2 REQ.
B - 11/64 DIA	2 REQ.
C - .161 - .164 DIA	4 REQ.
D - 13/64 DIA	1 REQ.
E - 5/8	1 REQ.
F - 3/8	2 REQ.



**UNLESS OTHERWISE SPECIFIED:**

- USE MATERIAL THICKNESS FOR MAXIMUM RADIUS ON ALL BENDS.
- ALL ANGULAR BENDS 90 DEGREES.
- REMOVE ALL BURRS AND SHARP EDGES.
- MOUNT INSERTS AFTER FINISHING.

QTY. REQ.	ITEM	PART NO.	DESCRIPTION	SYMBOL
1	3	TE 164-19	NUT, PLAIN CLINCH	
1	2	TE 164-16	NUT, PLAIN CLINCH	
5	1	NT 129-0440-4	NUT, ROUND SWAGE	

LIST OF MATERIAL

**THE TECHNICAL MATERIEL CORP.**  
MAMARONECK, NEW YORK

**SHIELD PRESELECTOR**

1	GPR-110-A	
QTY / UNIT	MODEL USED ON	ASS'Y NO.
APPLICATION		
CODE		

**NOTICE TO PERSONS RECEIVING THIS DRAWING**

THE TECHNICAL MATERIEL CORPORATION claims proprietary right in the material disclosed hereon. This drawing is issued in confidence for engineering information only and may not be reproduced or used to manufacture anything shown hereon without permission from THE TECHNICAL MATERIEL CORPORATION to the user. This drawing is loaned for mutual assistance and is subject to recall at any time.

UNLESS OTHERWISE SPECIFIED  
DIMENSIONS ARE IN INCHES  
AND INCLUDE CHEMICALLY APPLIED  
OR PLATED FINISHES

**TOLERANCES ON**

DECIMALS	FRACTIONS
.X ± .05	± 1/64
.XX ± .01	ANGLES
.XXX ± .005	± 0° - 30'

MATERIAL .051 THK  
ALUM 5052-H32

FINISH S404  
YEL IRIDITE

FINAL APPROVAL	DATE
* <i>WJB</i>	11/10/77
MECH. DES.	DATE
ELECT. DES.	DATE
CHECKED	DATE
DRAWN	DATE
GDL	12-12-76

SIZE	CODE IDENT. NO.	DWG NO.	ISSUE
C	82679	MS 6753	Ø
SCALE	1:1	SHEET	OF