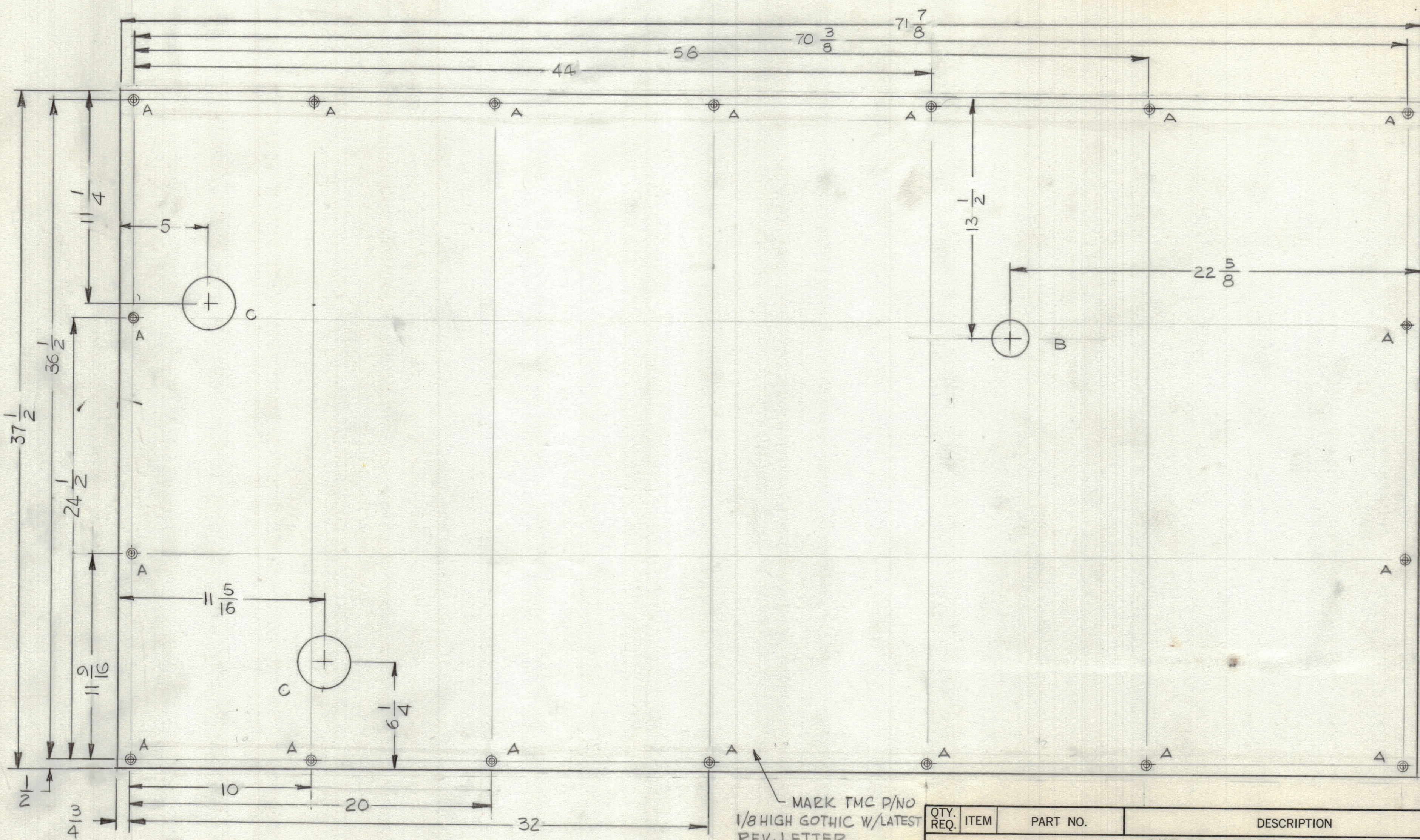


REVISIONS							
ZONE	LTR	DESCRIPTION	DATE	E.M.N.NO	DRAFT	CHKD	APPD
			9-76				



- HOLES**
- A - .169 DIA C'SHK 82 TO .337 DIA 18 REQ
 - B - 2" DIA 1REQ
 - C - 3" DIA 2REQ

MARK TMC P/NO
1/8 HIGH GOTHIC W/LATEST
REV. LETTER

UNLESS OTHERWISE SPECIFIED
DIMENSIONS ARE IN INCHES
AND INCLUDE CHEMICALLY APPLIED
OR PLATED FINISHES

TOLERANCES ON

DECIMALS	FRACTIONS
.X ± .05	± 1/64
.XX ± .01	ANGLES
.XXX ± .005	± 0° -30'

QTY. REQ.	ITEM	PART NO.	DESCRIPTION	SYMBOL
LIST OF MATERIAL				
THE TECHNICAL MATERIEL CORP. MAMARONECK, NEW YORK				
SHIELD, LEFT SIDE				
FINAL APPROVAL <i>GDL</i>		DATE 8-12-76	SIZE CODE IDENT.NO. DWG NO.	
MECH. DES.		DATE	C 82679 MS6705	
ELECT. DES.		DATE	SCALE 1/4	
CHECKED		DATE	SHEET OF	
DRAWN G.D.L		DATE 3-30-75	ISSUE	

1	HFTM-40KJ	
QTY / UNIT	MODEL USED ON	ASS'Y NO.
APPLICATION		
CODE		
<small>NOTICE TO PERSONS RECEIVING THIS DRAWING</small> <small>THE TECHNICAL MATERIEL CORPORATION claims proprietary right in the material disclosed hereon. This drawing is issued in confidence for engineering information only and may not be reproduced or used to manufacture anything shown hereon without permission from THE TECHNICAL MATERIEL CORPORATION to the user. This drawing is loaned for mutual assistance and is subject to recall at any time.</small>		