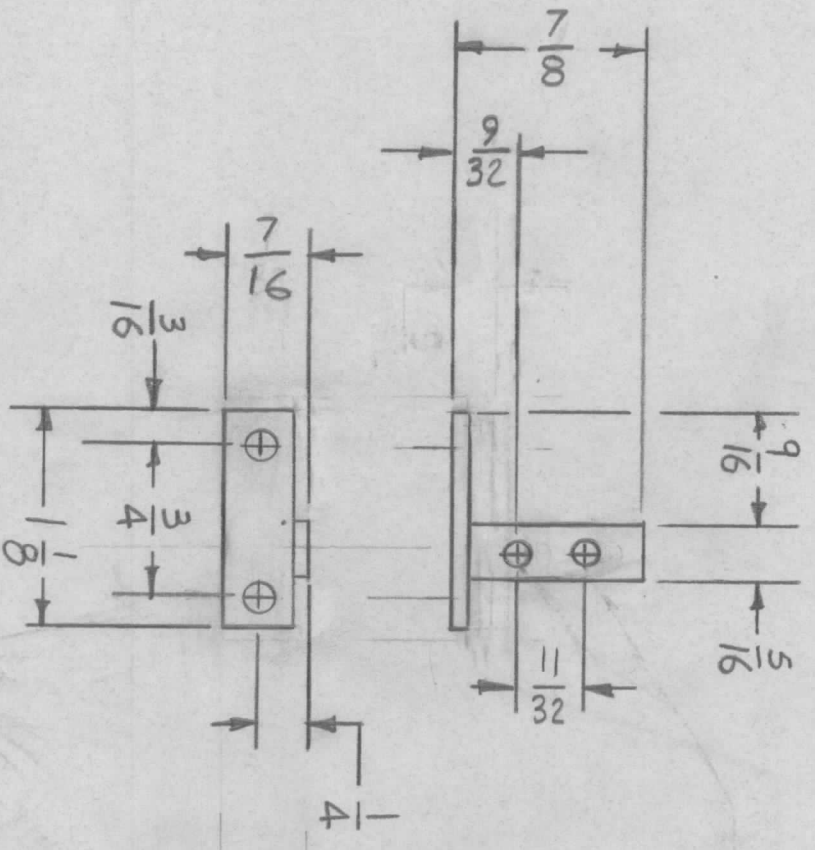


REVISIONS							
EM.N. NO.	DRAFT	CHKD	ZONE	LTR	DESCRIPTION	DATE	APPROVED
	Ch				ORIGINAL RELEASE FOR PRODUCTION	3/4/75	



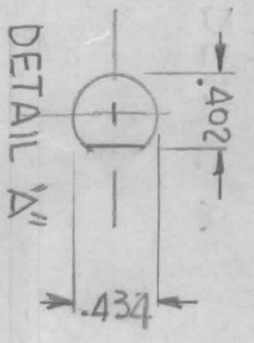
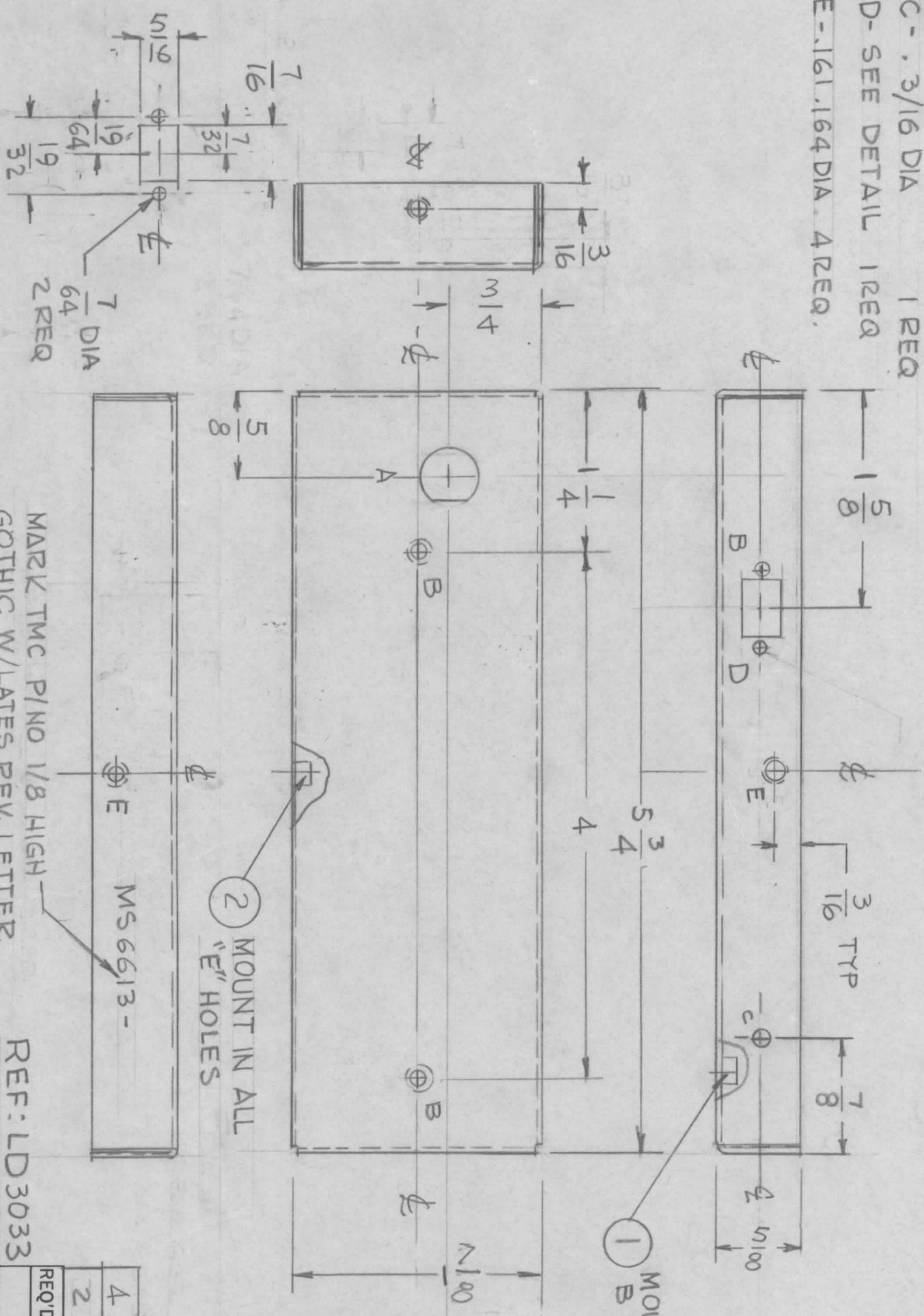
4 Holes 9/64 DIA

UNLESS OTHERWISE SPECIFIED:
 1. USE MATERIAL THICKNESS FOR MAXIMUM RADIUS ON ALL BENDS.
 2. ALL ANGULAR BENDS 90 DEGREES.
 3. REMOVE ALL BURRS AND SHARP EDGES.
 4. MOUNT INSERTS AFTER FINISHING.

QTY / UNIT	1	MODEL USED ON	KIT 403	ASS'Y NO.	A 5619																																																												
APPLICATION																																																																	
CODE																																																																	
<p>UNLESS OTHERWISE SPECIFIED DIMENSIONS ARE IN INCHES AND INCLUDE CHEMICALLY APPLIED OR PLATED FINISHES</p> <table border="1"> <tr> <td>DECIMALS</td> <td>FRACTIONS</td> </tr> <tr> <td>.X ± .05</td> <td>1/64</td> </tr> <tr> <td>.XX ± .01</td> <td>ANGLES</td> </tr> <tr> <td>.XXX ± .005</td> <td>90° - 30'</td> </tr> </table>						DECIMALS	FRACTIONS	.X ± .05	1/64	.XX ± .01	ANGLES	.XXX ± .005	90° - 30'																																																				
DECIMALS	FRACTIONS																																																																
.X ± .05	1/64																																																																
.XX ± .01	ANGLES																																																																
.XXX ± .005	90° - 30'																																																																
<p>UNLESS OTHERWISE SPECIFIED DIMENSIONS ARE IN INCHES AND INCLUDE CHEMICALLY APPLIED OR PLATED FINISHES</p> <table border="1"> <tr> <td>FINAL APPROVAL</td> <td>DATE</td> <td>MECH. DES.</td> <td>DATE</td> <td>ELECT. DES.</td> <td>DATE</td> </tr> <tr> <td>Ch</td> <td>3/4/75</td> <td></td> <td></td> <td></td> <td></td> </tr> <tr> <td>CHECKED</td> <td>DATE</td> <td>DRAWN</td> <td>DATE</td> <td colspan="2"> <p>LIST OF MATERIAL</p> <p>THE TECHNICAL MATERIEL CORP.</p> <p>MAMARONECK, NEW YORK</p> <p>BRACKET, RELAY SUPPORT</p> </td> </tr> <tr> <td>R 4220</td> <td>8-4-75</td> <td></td> <td></td> <td>SIZE</td> <td>SCALE</td> </tr> <tr> <td colspan="3">MATERIAL</td> <td colspan="3"> <p>NO SCALE</p> </td> </tr> <tr> <td colspan="3">FINISH</td> <td colspan="3"> <p>SIZE B</p></td> </tr> <tr> <td colspan="3">S 404 Yel IRIDITE</td> <td colspan="3"> <p>CODE IDENT. NO. 82679</p> </td> </tr> <tr> <td colspan="3"></td> <td colspan="3"> <p>DWG NO. M56608</p> </td> </tr> <tr> <td colspan="3"></td> <td colspan="3"> <p>SHEET 1 OF 1</p> </td> </tr> <tr> <td colspan="3"></td> <td colspan="3"> <p>ISSUE Ø</p> </td> </tr> </table>						FINAL APPROVAL	DATE	MECH. DES.	DATE	ELECT. DES.	DATE	Ch	3/4/75					CHECKED	DATE	DRAWN	DATE	<p>LIST OF MATERIAL</p> <p>THE TECHNICAL MATERIEL CORP.</p> <p>MAMARONECK, NEW YORK</p> <p>BRACKET, RELAY SUPPORT</p>		R 4220	8-4-75			SIZE	SCALE	MATERIAL			<p>NO SCALE</p>			FINISH			<p>SIZE B</p>			S 404 Yel IRIDITE			<p>CODE IDENT. NO. 82679</p>						<p>DWG NO. M56608</p>						<p>SHEET 1 OF 1</p>						<p>ISSUE Ø</p>		
FINAL APPROVAL	DATE	MECH. DES.	DATE	ELECT. DES.	DATE																																																												
Ch	3/4/75																																																																
CHECKED	DATE	DRAWN	DATE	<p>LIST OF MATERIAL</p> <p>THE TECHNICAL MATERIEL CORP.</p> <p>MAMARONECK, NEW YORK</p> <p>BRACKET, RELAY SUPPORT</p>																																																													
R 4220	8-4-75			SIZE	SCALE																																																												
MATERIAL			<p>NO SCALE</p>																																																														
FINISH			<p>SIZE B</p>																																																														
S 404 Yel IRIDITE			<p>CODE IDENT. NO. 82679</p>																																																														
			<p>DWG NO. M56608</p>																																																														
			<p>SHEET 1 OF 1</p>																																																														
			<p>ISSUE Ø</p>																																																														

NOTICE TO PERSONS RECEIVING THIS DRAWING
 THE TECHNICAL MATERIEL CORPORATION claims proprietary right in the material disclosed hereon. This drawing is issued in confidence for engineering information only and may not be reproduced or used to manufacture anything shown hereon without permission from THE TECHNICAL MATERIEL CORPORATION to the user. This drawing is loaned for mutual assistance and is subject to recall at any time.

- HOLE
- A - SEE DETAIL 1 REQ
 - B - .189 DIA 2 REQ
 - C - .3/16 DIA 1 REQ
 - D - SEE DETAIL 1 REQ
 - E - .161, .164 DIA. 4 REQ.



REVISIONS							
EMN. NO.	DRAFT	CHKD	ZONE	LTR	DESCRIPTION	DATE	APPROVED
				X	EXP. RELEASE		
	WB.			X1	RELOCATE ONE "C" HOLE	11/18/76	
				Ø	ORIGINAL RELEASE FOR PRODUCTION	1-25-77	*

MARK TMC PINO 1/8 HIGH -
GOTHIC W/LATES REV. LETTER

REF: LD3033

UNLESS OTHERWISE SPECIFIED:
 1. USE MATERIAL THICKNESS FOR MAXIMUM RADIUS ON ALL BENDS.
 2. ALL ANGULAR BENDS 90 DEGREES.
 3. REMOVE ALL BURRS AND SHARP EDGES.

REQ'D	ITEM	PART NUMBER	DESCRIPTION	SYM.
4	2	NT129 0440-	NUT ROUND	E
2	1	TE108-6	STANDOFF, RIVET TYPE	B

LIST OF MATERIAL

THE TECHNICAL MATERIEL CORP.
MAMARONECK, NEW YORK

SHIELD, ANTENNA
PRESELECT

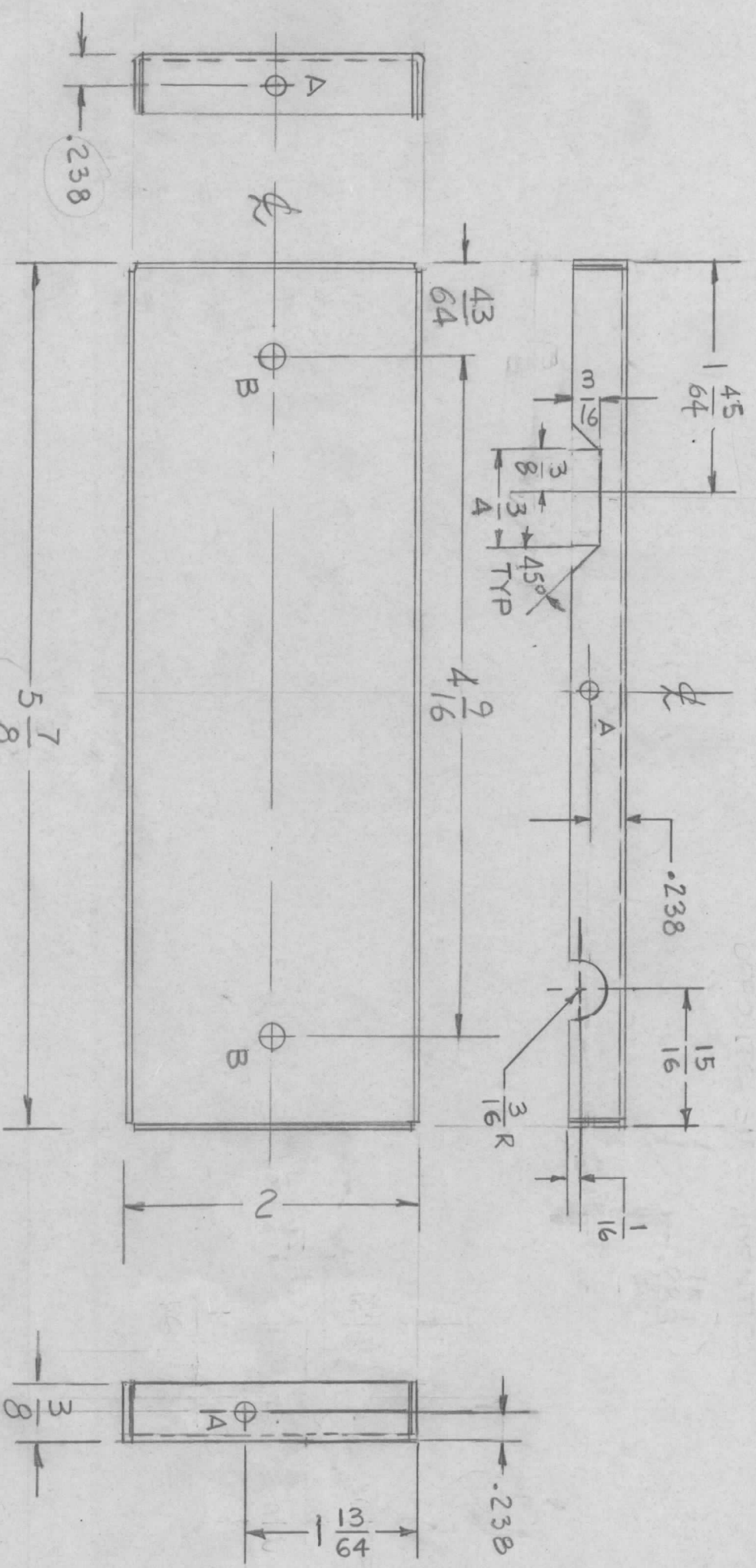
QTY / UNIT	MODEL USED ON	ASS'Y NO.
1	GPR 110	
APPLICATION		
CODE		

DECIMALS	FRACTIONS	DATE
X ± .05	1/64	11/10/77
.XX ± .01	ANGLES	
.XXX ± .005	0° - 30'	
MATERIAL .051 THK		
ALUM 5052-H32		
FINISH S404		
YEL IZIDITE		

SIZE	CODE IDENT. NO.	DWG NO.	ISSUE
B	82679	MS 6613	Ø
SCALE			SHEET OF

NOTICE TO PERSONS RECEIVING THIS DRAWING
 THE TECHNICAL MATERIEL CORPORATION claims proprietary right in the material disclosed hereon. This drawing is issued in confidence for engineering information only and may not be reproduced or used to manufacture anything shown hereon without permission from THE TECHNICAL MATERIEL CORPORATION to the user. This drawing is loaned for mutual assistance and is subject to recall at any time.

REVISIONS							
EMN. NO.	DRAFT	CHKD	ZONE	LTR	DESCRIPTION	DATE	APPROVED
				X	EXP. RELEASE		
	GDL			X/1	DIMS. 2" WAS 1 31/32, 5 7/8 WAS 5 27/32	5-23-75	
	W.B.			X2	RELOCATE 3/16 R. NOTCH	11-18-76	
	G.D.L.			Ø	ORIGINAL RELEASE FOR PRODUCTION	1-25-77	*



UNLESS OTHERWISE SPECIFIED:
 1. USE MATERIAL THICKNESS FOR MAXIMUM RADIUS ON ALL BENDS.
 2. ALL ANGULAR BENDS 90 DEGREES.
 3. REMOVE ALL BURRS AND SHARP EDGES.

MARK TMC P/N6
 1/8 HIGH GOTHIC
 W/LATEST REV.
 LETTER

HOLE
 A - 9/64 DIA 4 REQ
 B - 11/64 DIA 2 REQ

QTY / UNIT	1	MODEL USED ON	GPR 110	ASSY NO.	
APPLICATION		CODE			

NOTICE TO PERSONS RECEIVING THIS DRAWING
 THE TECHNICAL MATERIEL CORPORATION claims proprietary right in the material disclosed hereon. This drawing is issued in confidence for engineering information only and may not be reproduced or used to manufacture anything shown hereon without permission from THE TECHNICAL MATERIEL CORPORATION to the user. This drawing is loaned for mutual assistance and is subject to recall at any time.

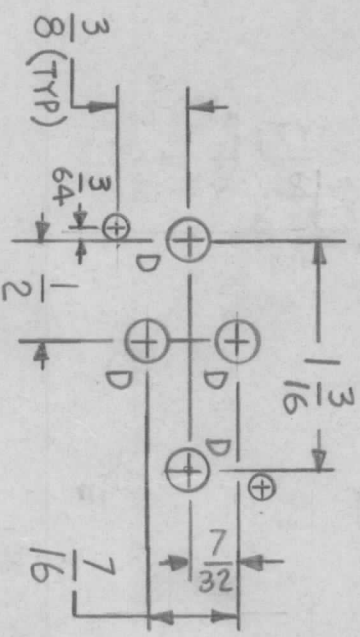
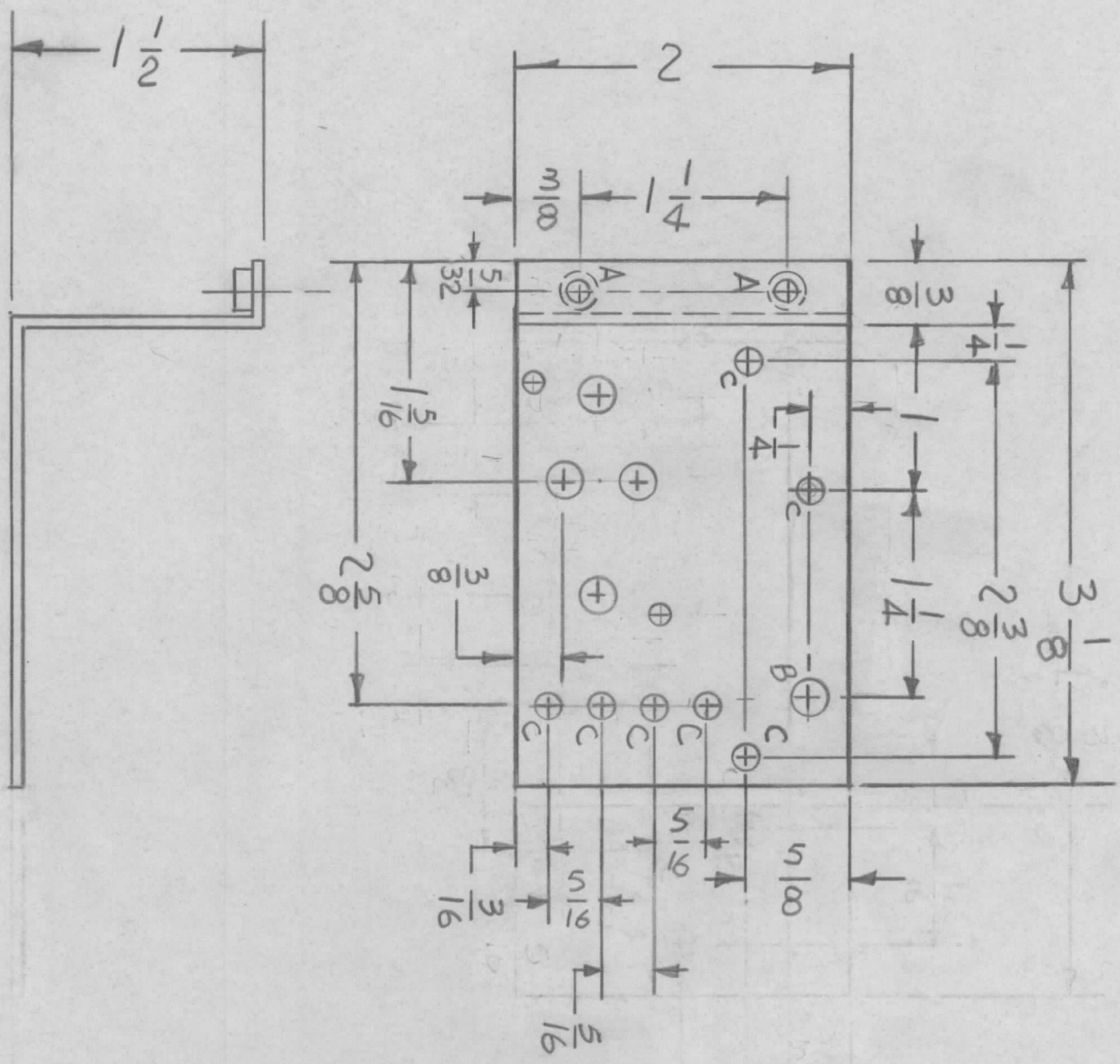
REQ'D ITEM	PART NUMBER	DESCRIPTION	SYM.
		LIST OF MATERIAL	

UNLESS OTHERWISE SPECIFIED DIMENSIONS ARE IN INCHES AND INCLUDE CHEMICALLY APPLIED OR PLATED FINISHES	FINAL APPROVAL	DATE
MECH. DES.	<i>GDL</i>	11/07/77
ELECT. DES.		
CHECKED		
DRAWN	<i>GDL</i>	4-7-75

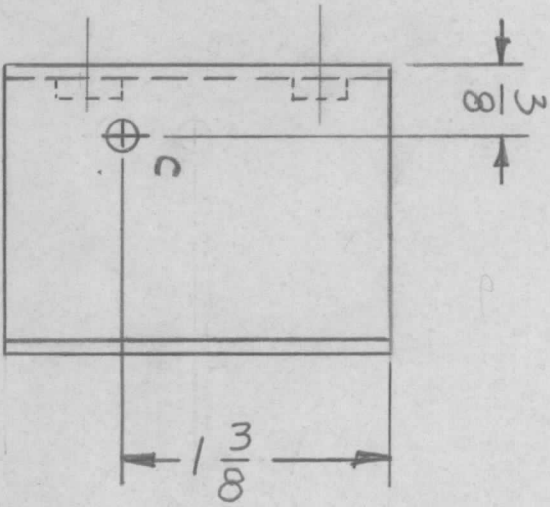
DECIMALS	FRACTIONS	ANGLES
.X ± .05	1/64	0° - 30'
.XX ± .01		
.XXX ± .005		
MATERIAL	051 THK	
ALUM	5052-H32	
FINISH	S404	
YEL	IRIDITE	
SIZE	CODE IDENT. NO.	DWG NO.
B	82679	MS 6614
SCALE	1:1	SHEET
		OF
		ISSUE
		Ø

THE TECHNICAL MATERIEL CORP.
 MAMARONECK, NEW YORK
 COVER, SHIELD ANTENNA

REVISIONS							
EMN. NO.	DRAFT	CHKD	ZONE	LTR	DESCRIPTION	DATE	APPROVED
	SP				ORIGINAL RELEASE FOR PRODUCTION	5/20/75	



HOLE	DESCRIPTION	REQ
A	.161-164 DIA	2
B	3/16 DIA	1
C	5/32	8
D	1/4 DIA	4
E	1/8 DIA	2



REQ'D ITEM	PART NUMBER	DESCRIPTION	SYM.
2	1	NT129-0440-4 NUT ROUND SWAGE TYPE	A

LIST OF MATERIAL

THE TECHNICAL MATERIEL CORP.
MAMARONECK, NEW YORK

BRACKET, 24V REG P/S

QTY / UNIT	MODEL USED ON	ASS'Y NO.
1	GP110(KT404)	
	APPLICATION	CODE

NOTICE TO PERSONS RECEIVING THIS DRAWING

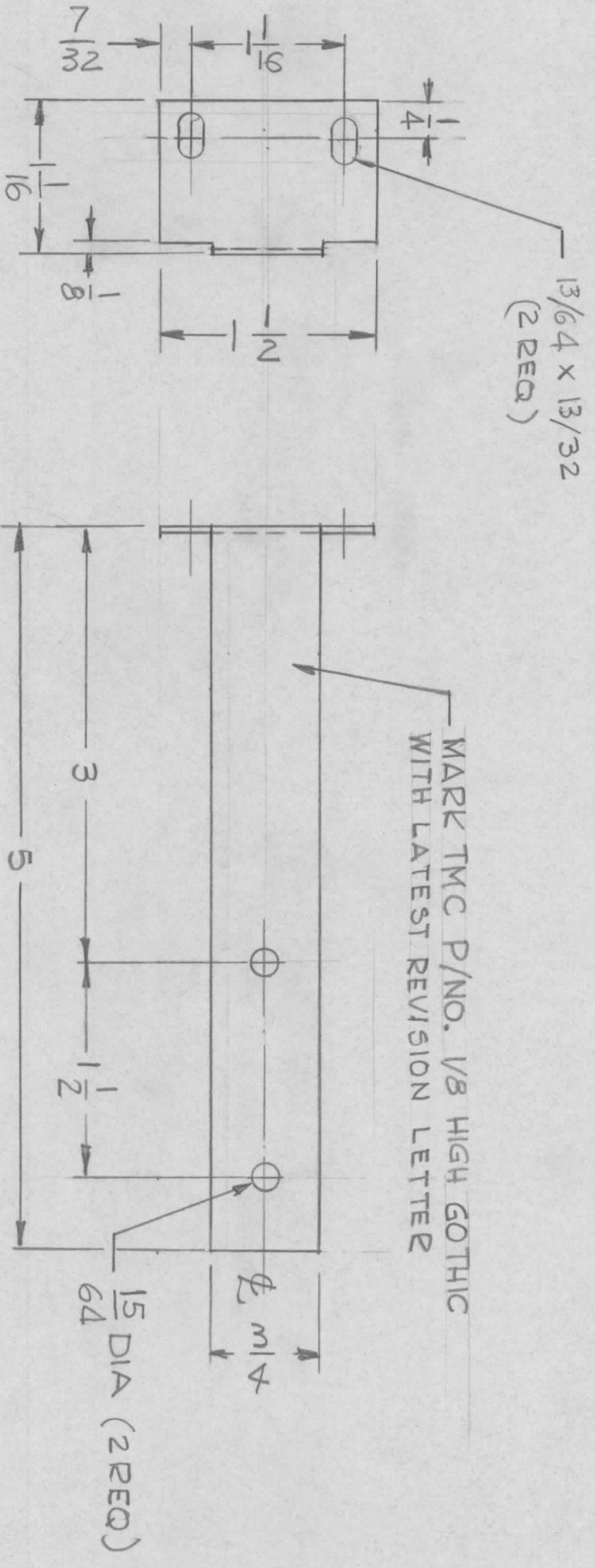
THE TECHNICAL MATERIEL CORPORATION claims proprietary right in the material disclosed hereon. This drawing is issued in confidence for engineering information only and may not be reproduced or used to manufacture anything shown hereon without permission from THE TECHNICAL MATERIEL CORPORATION to the user. This drawing is loaned for mutual assistance and is subject to recall at any time.

UNLESS OTHERWISE SPECIFIED DIMENSIONS ARE IN INCHES AND INCLUDE CHEMICALLY APPLIED OR PLATED FINISHES	
DECIMALS	FRACTIONS
.X ± .05	1/64
.XX ± .01	ANGLES
.XXX ± .005	90°-30'
MATERIAL	FINISH
.062 AL AL	S404 YELL IRIDITE

FINAL APPROVAL	DATE
MECH. DES.	DATE
ELECT. DES.	DATE
CHECKED	DATE
DRAWN	DATE

SIZE	CODE IDENT. NO.	DWG. NO.	ISSUE
B	82679	MS 6618	
SCALE		SHEET	OF

REVISIONS							
EMIN NO.	DRAFT	CHKD	ZONE	LTR	DESCRIPTION	DATE	APPROVED
	gdl				EXP. RELEASE		
					ORIGINAL Release	1-10-71	*



- UNLESS OTHERWISE SPECIFIED:
1. USE MATERIAL THICKNESS FOR MAXIMUM RADIUS ON ALL BENDS.
 2. ALL ANGULAR BENDS 90 DEGREES.
 3. REMOVE ALL BURRS AND SHARP EDGES.

QTY / UNIT	MODEL USED ON	ASSY NO.
	AP 156	
	APPLICATION	
	CODE	

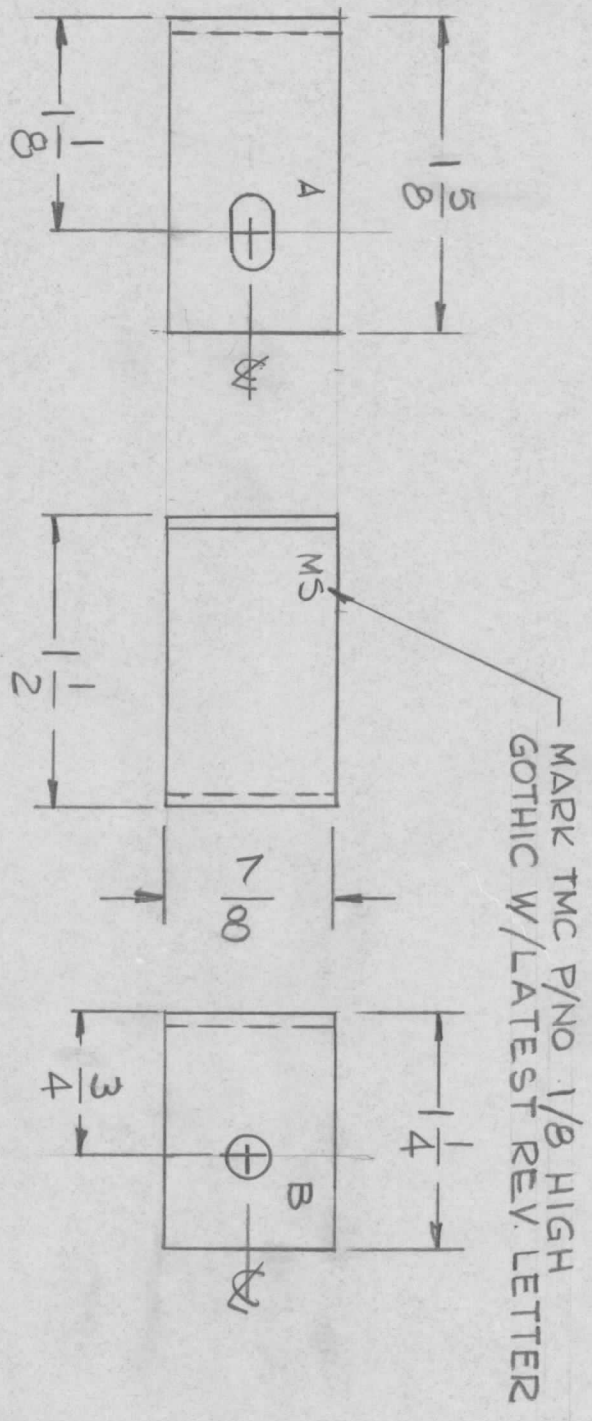
NOTICE TO PERSONS RECEIVING THIS DRAWING
 THE TECHNICAL MATERIEL CORPORATION claims proprietary right in the material disclosed hereon. This drawing is issued in confidence for engineering information only and may not be reproduced or used to manufacture anything shown hereon without permission from THE TECHNICAL MATERIEL CORPORATION to the user. This drawing is loaned for mutual assistance and is subject to recall at any time.

DECIMALS	FRACTIONS
X ± .05	1/64
.XX ± .01	ANGLES
.XXX ± .005	0° - 30'
MATERIAL .064 THK	
ALY 5052-H32	
FINISH S404	
YEL IRIDITE	

REQ'D	ITEM	PART NUMBER	DATE
			1-10-71
			9-17-75

LIST OF MATERIAL			
REQ'D	ITEM	PART NUMBER	DESCRIPTION
			THE TECHNICAL MATERIEL CORP. MAMARONECK, NEW YORK
			BRACKET, MTG RESISTOR
SIZE	CODE IDENT. NO.	DWG NO.	ISSUE
B	82679	MS 6628	Ø
SCALE	1:1	SHEET	OF

REVISIONS				DATE	APPROVED
EMN. NO.	DRAFT	CHKD	ZONE	LTR	DESCRIPTION
					X EXP RELEASE



UNLESS OTHERWISE SPECIFIED:

1. USE MATERIAL THICKNESS FOR MAXIMUM RADIUS ON ALL BENDS.
2. ALL ANGULAR BENDS 90 DEGREES.
3. REMOVE ALL BURRS AND SHARP EDGES.

HOLES -
A - 7/32 X 3/8 1 REQ
B - 15/64 DIA 1 REQ

QTY / UNIT	2	MODEL USED ON	TOC-3	ASSY NO.	
APPLICATION					
CODE					

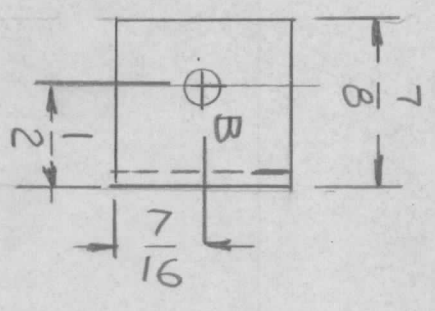
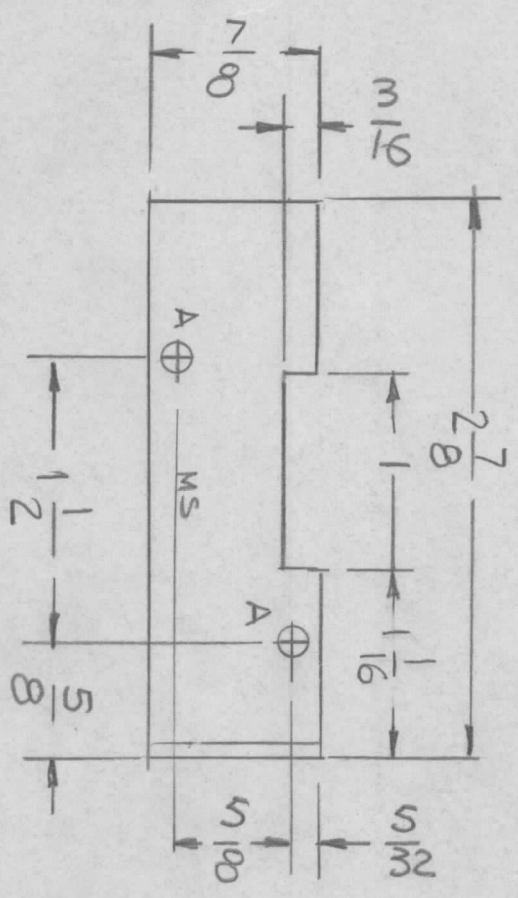
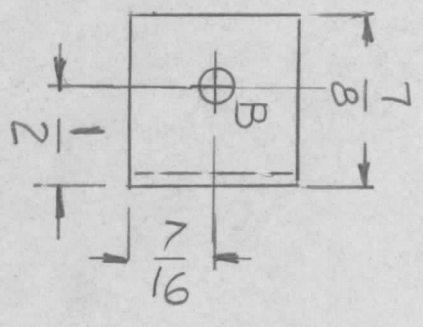
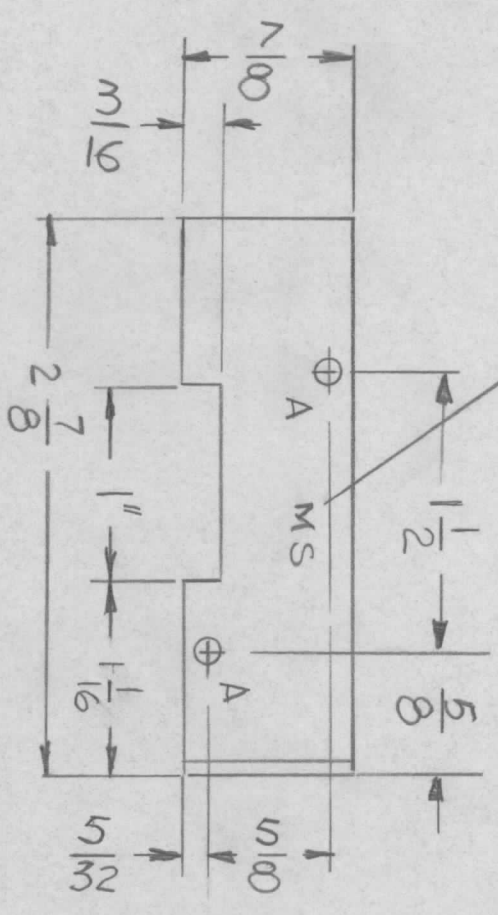
NOTICE TO PERSONS RECEIVING THIS DRAWING
THE TECHNICAL MATERIEL CORPORATION claims proprietary right in the material disclosed hereon. This drawing is issued in confidence for engineering information only and may not be reproduced or used to manufacture anything shown hereon without permission from THE TECHNICAL MATERIEL CORPORATION to the user. This drawing is loaned for mutual assistance and is subject to recall at any time.

DECIMALS	.X ± .05	TOLS.	FRACTIONS	1/64
.XX ± .01		ANGLES		0° - 30'
.XXX ± .005				
MATERIAL	AL 5052-H32			
FINISH	S404 YEL IRIDITE			

REQ'D ITEM	PART NUMBER	DESCRIPTION	SYM.
LIST OF MATERIAL			
THE TECHNICAL MATERIEL CORP. MAMARONECK, NEW YORK			
FINAL APPROVAL	DATE		
MECH. DES.	DATE		
ELECT. DES.	DATE		
CHECKED	DATE		
DRAWN	DATE		
DRAWN		GDL 6-27-75	
SIZE	CODE IDENT. NO.	DWG NO.	ISSUE
B	82679	MS 6630	X
SCALE	1:1	SHEET	OF

BRACKET, RETAINER
(GPR-110)

MARK TMC P/NO
1/8 HIGH GOTHIC WITH LATEST
REV. LETTER



MS 6640-2

MS 6640-1

REVISIONS							
EMN. NO.	DRAFT	CHKD	ZONE	LTR	DESCRIPTION	DATE	APPROVED
				X	EXP. RELEASE	9.10.75	
				Ø	ORIGINAL RELEASE FOR PRODUCTION	9/15/75	

HOLE :
A - 9/64 DIA 2 REQ.
B - 11/64 DIA 1 REQ.

UNLESS OTHERWISE SPECIFIED:
1. USE MATERIAL THICKNESS FOR MAXIMUM RADIUS ON ALL BENDS.
2. ALL ANGULAR BENDS 90 DEGREES.
3. REMOVE ALL BURRS AND SHARP EDGES.

1 ea.	TOC-24-2	AX5202
QTY / UNIT MODEL USED ON ASSY NO.		
APPLICATION		
CODE		

NOTICE TO PERSONS RECEIVING THIS DRAWING
THE TECHNICAL MATERIEL CORPORATION claims proprietary right in the material disclosed hereon. This drawing is issued in confidence for engineering information only and may not be reproduced or used to manufacture anything shown hereon without permission from THE TECHNICAL MATERIEL CORPORATION to the user. This drawing is loaned for mutual assistance and is subject to recall at any time.

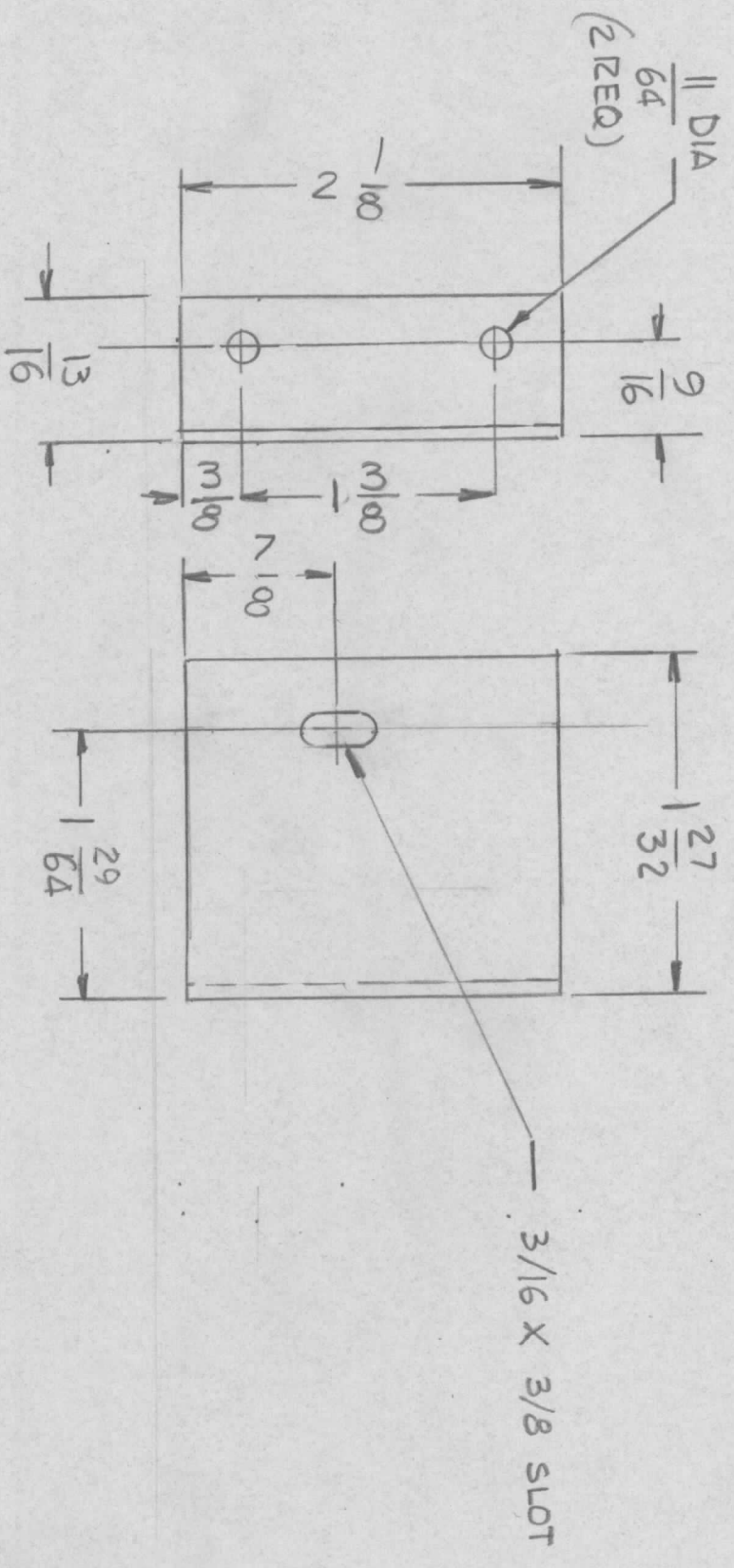
REQ'D ITEM	PART NUMBER	DESCRIPTION	SYM.
LIST OF MATERIAL			

THE TECHNICAL MATERIEL CORP.
MAMARONECK, NEW YORK
BRACKET MTG RELAY

UNLESS OTHERWISE SPECIFIED DIMENSIONS ARE IN INCHES AND INCLUDE CHEMICALLY APPLIED OR PLATED FINISHES	FINAL APPROVAL	DATE
MECH. DES.		9/15/75
ELECT. DES.		
CHECKED		
DRAWN	G.D.L.	9/15/75

DECIMALS	FRACTIONS	SIZE	CODE IDENT. NO.	DWG NO.	ISSUE
X ± .05	1/64	B	82679	MS 6640	Ø
.XX ± .01	ANGLES	SCALE	1:1		
.XXX ± .005	0° - 30'				
MATERIAL - .064 THK ALUM 5052-H32					
FINISH S404 YEL. IRIDITE					

REVISIONS							
EM.N. NO.	DRAFT	CHKD	ZONE	LTR	DESCRIPTION	DATE	APPROVED
	0			Ø	ORIGINAL RELEASE FOR PRODUCTION	9/5/75	



MS6641 -1 AS SHOWN
 MS6641 -2 MIRROR IMAGE

REQ'D	ITEM	PART NUMBER	DESCRIPTION	SYM.
			LIST OF MATERIAL	
			THE TECHNICAL MATERIEL CORP. MAMARONECK, NEW YORK	
			BRACKET SUPPORT HELG100	
			SIZE B	
			CODE IDENT. NO. 82679	
			DWG NO. MS6641	
			SCALE	
			SHEET	OF
			ISSUE	

QTY / UNIT	MODEL USED ON	ASSY NO.
	TOC-24-1	
APPLICATION		
CODE		

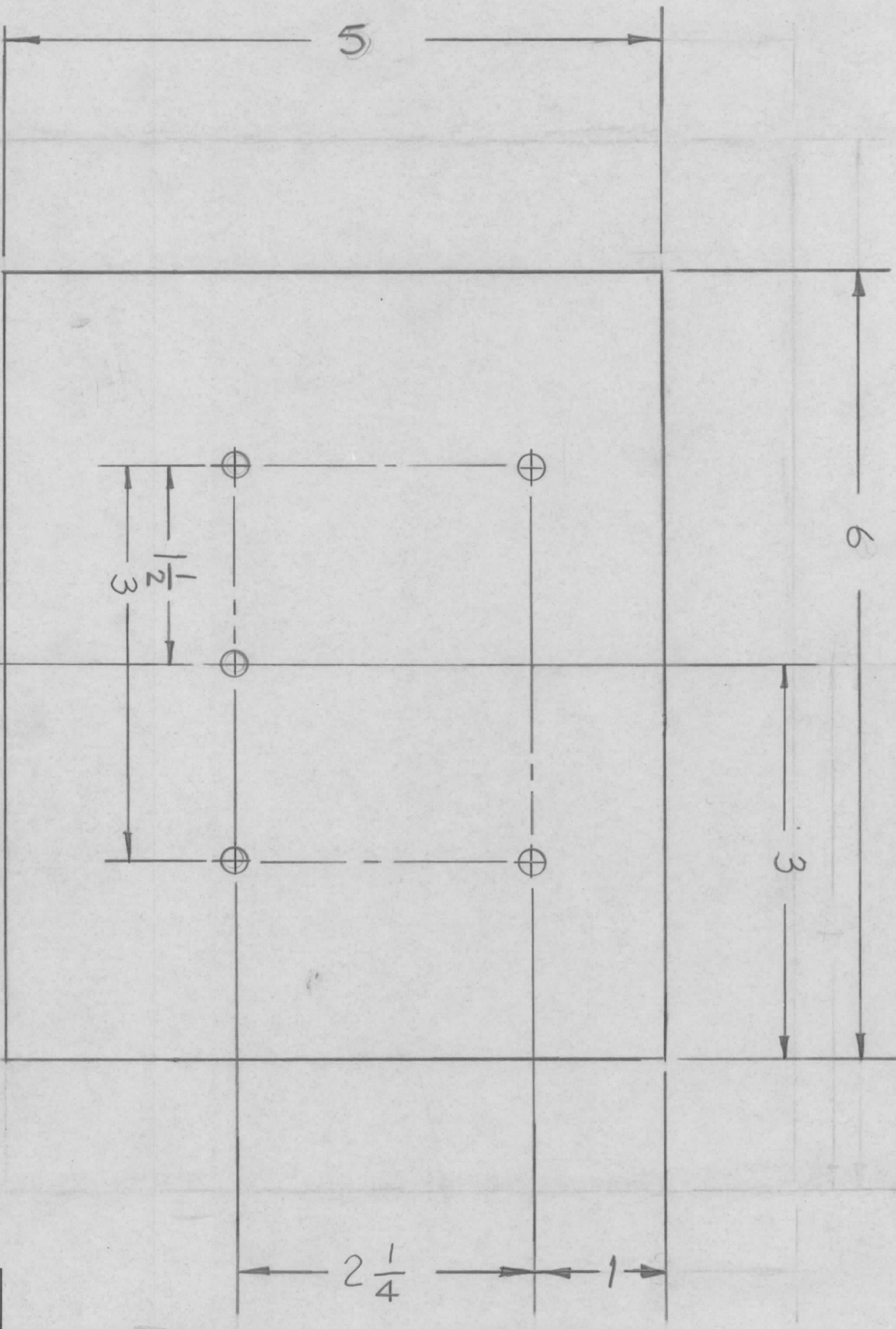
DECIMALS	TOLS.	FRACTIONS	ANGLES
.X ± .05		1/64	0° - 30'
.XX ± .01			
.XXX ± .005			

FINAL APPROVAL	DATE
MECH. DES.	DATE
ELECT. DES.	DATE
CHECKED	DATE
DRAWN	DATE

UNLESS OTHERWISE SPECIFIED DIMENSIONS ARE IN INCHES AND INCLUDE CHEMICALLY APPLIED OR PLATED FINISHES

THE TECHNICAL MATERIEL CORPORATION claims proprietary right in the material disclosed hereon. This drawing is issued in confidence for engineering information only and may not be reproduced or used to manufacture anything shown hereon without permission from THE TECHNICAL MATERIEL CORPORATION to the user. This drawing is loaned for mutual assistance and is subject to recall at any time.

REVISIONS			
EMN. NO.	DRAFT	CHKD	ZONE
	40		
LTR	DESCRIPTION	DATE	APPROVED
X	EXP. RELEASE	6-26-75	
Ø	ORIGINAL RELEASE FOR PRODUCTION	9/15/75	



REMOVE ALL BURRS AND SHARP EDGES.

(5) 1/4 DIA Holes Req

QTY / UNIT	2	MODEL USED ON	ATU-2	ASSY NO.	(PX488)
APPLICATION		CODE			

DECIMALS	X ± .05	TOLS.	FRACTIONS	1/64
.XX ± .01		ANGLES		0° - 30'
.XXX ± .005				
MATERIAL				
.081 ALUM AL				
FINISH				
S404 YEL TRIDITE				

REQ'D ITEM	PART NUMBER	DESCRIPTION	SYM.
		LIST OF MATERIAL	

FINAL APPROVAL	MECH. DES.	DATE	DATE	DATE
<i>[Signature]</i>		9/10/75	6-26-75	6-26-75
ELECT. DES.	CHECKED	DATE	DATE	DATE
	<i>[Signature]</i>	6-26-75		
DRAWN				
DRAWN				
SIZE	CODE IDENT. NO.	DWG NO.	ISSUE	
B	82679	MS 6645	Ø	
SCALE			SHEET	OF
			1	

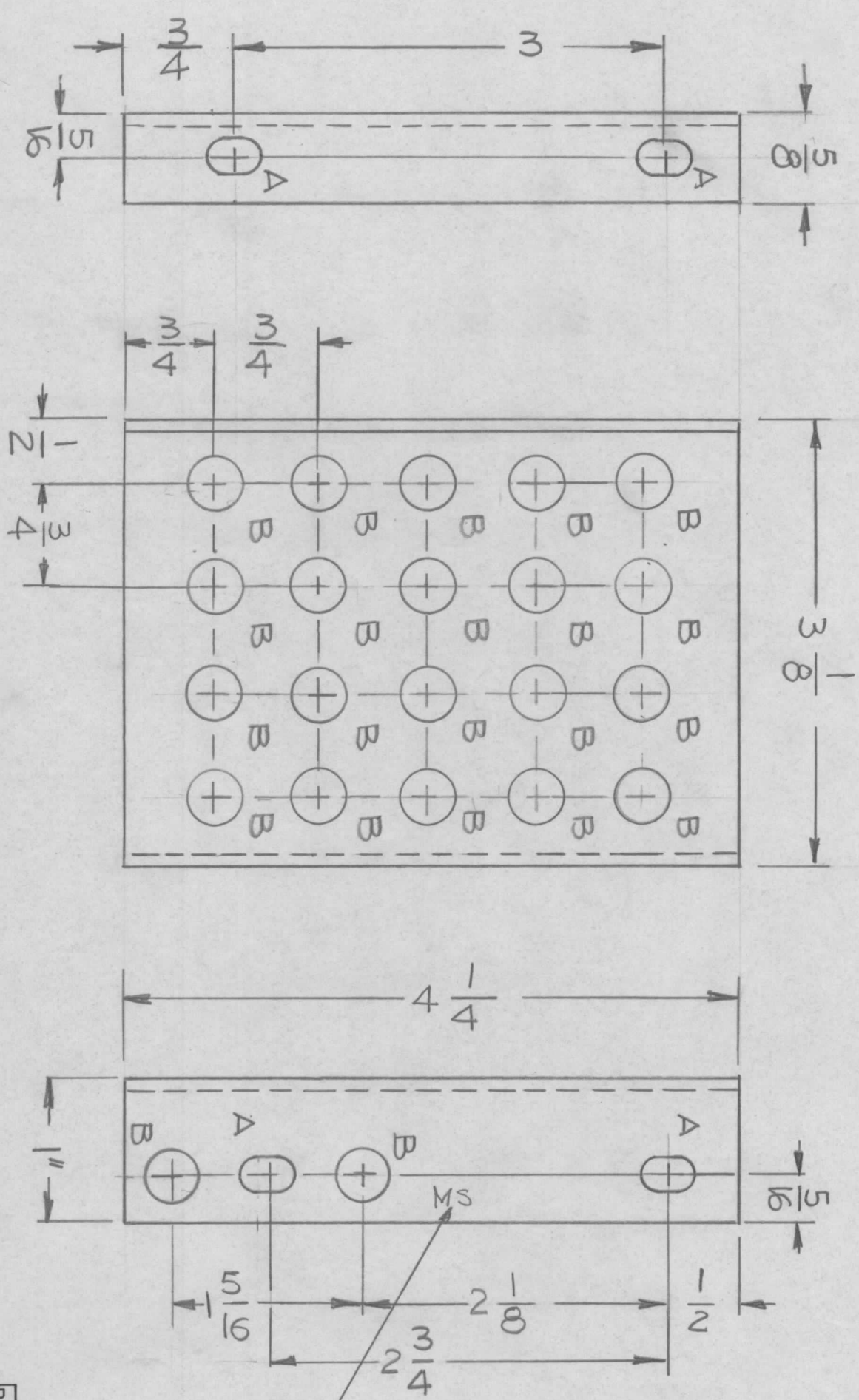
THE TECHNICAL MATERIEL CORP.
MAMARONECK, NEW YORK

PLATE, SUPPORT
HANDLE

NOTICE TO PERSONS RECEIVING THIS DRAWING
THE TECHNICAL MATERIEL CORPORATION claims proprietary right in the material disclosed hereon. This drawing is issued in confidence for engineering information only and may not be reproduced or used to manufacture anything shown hereon without permission from THE TECHNICAL MATERIEL CORPORATION to the user. This drawing is loaned for mutual assistance and is subject to recall at any time.

MS 6646-1 AS SHOWN 1 REQ
 MS 6646-2 MIRROR IMAGE 1REQ

EMN. NO.		DRAFT	CHKD	ZONE	LTR	DESCRIPTION	DATE	APPROVED
						REDRAWN WITH CHANGE	6-18-76	
						ORIGINAL Release	1-10-77	



HOLES
 A - 1/4 X 3/8 SLOT 4 REQ
 B - 3/8 DIA 22 REQ

MARK TMC P/NO. 1/8 HIGH
 GOTHIC WITH LATEST REV.
 LETTER

UNLESS OTHERWISE SPECIFIED:

1. USE MATERIAL THICKNESS FOR MAXIMUM RADIUS ON ALL BENDS.
2. ALL ANGULAR BENDS 90 DEGREES.
3. REMOVE ALL BURRS AND SHARP EDGES.

QTY / UNIT	MODEL USED ON	ASSY NO.
	TOC-25-2	
APPLICATION		
	CODE	

NOTICE TO PERSONS RECEIVING THIS DRAWING
 THE TECHNICAL MATERIEL CORPORATION claims proprietary right in the material disclosed hereon. This drawing is issued in confidence for engineering information only and may not be reproduced or used to manufacture anything shown hereon without permission from THE TECHNICAL MATERIEL CORPORATION to the user. This drawing is loaned for mutual assistance and is subject to recall at any time.

DECIMALS	FRACTIONS	TOLS.	ANGLES
X ± .05	1/64		
.XX ± .01			
.XXX ± .005	0° - 30'		

FINISH 5404
 YEL IRIDITE
 MATERIAL .081 THK
 ALY 5052-H32

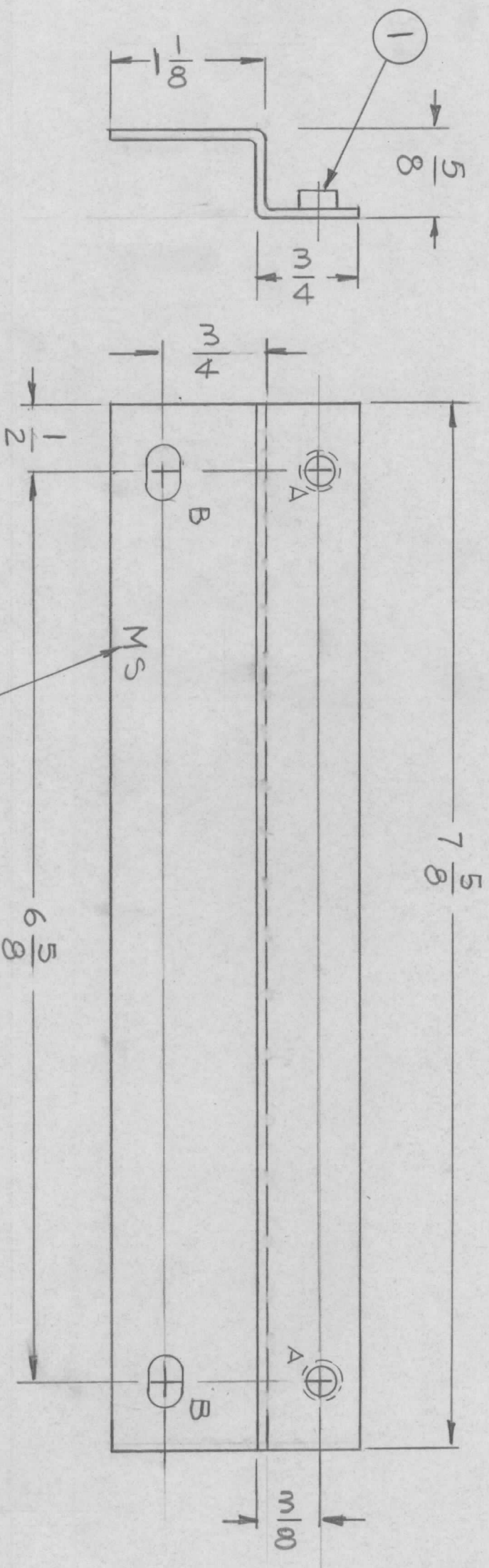
FINAL APPROVAL	MECH. DES.	DATE
<i>[Signature]</i>		1-10-77
ELECT. DES.	CHECKED	DATE
		6-18-76

BRACKET RETAIN
 (MMX-M)
 THE TECHNICAL MATERIEL CORP.
 MAMARONECK, NEW YORK

REQ'D ITEM	PART NUMBER	DESCRIPTION	SYM.
		LIST OF MATERIAL	

SIZE B
 CODE IDENT. NO. 82679
 DWG NO. MS 6646
 SCALE 1:1
 SHEET OF

REVISIONS				DATE	APPROVED
EMN. NO.	DRAFT	CHKD	ZONE	LTR	DESCRIPTION
				X	EXP. RELEASE
				Ø	ORIGINAL RELEASE FOR PRODUCTION
					9/15/75



MARK TMC PART NUMBER
1/8 HIGH GOTHIC WITH LATEST
REVISION LETTER ON

HOLES:
A - 13/64 DIA 2REQ
B - 7/32x3/8 SLOT 2REQ

REQ'D ITEM	PART NUMBER	DESCRIPTION	SYM.
2	1	NT-129-8-32 NUT, ROUND	

LIST OF MATERIAL
THE TECHNICAL MATERIEL CORP.
MAMARONECK, NEW YORK

BRACKET, RETAINER
TMA-1K

QTY / UNIT	MODEL USED ON	ASS'Y NO.
	TOG-24-2	
APPLICATION		
CODE		

DECIMALS	FRACTIONS
X ± .05 TOLS.	1/64 ANGLES
.XX ± .01	° .30'
.XXX ± .005	
MATERIAL .064THK	
ALY 5052-H32	
FINISH	S404
YEL IRIDITE	

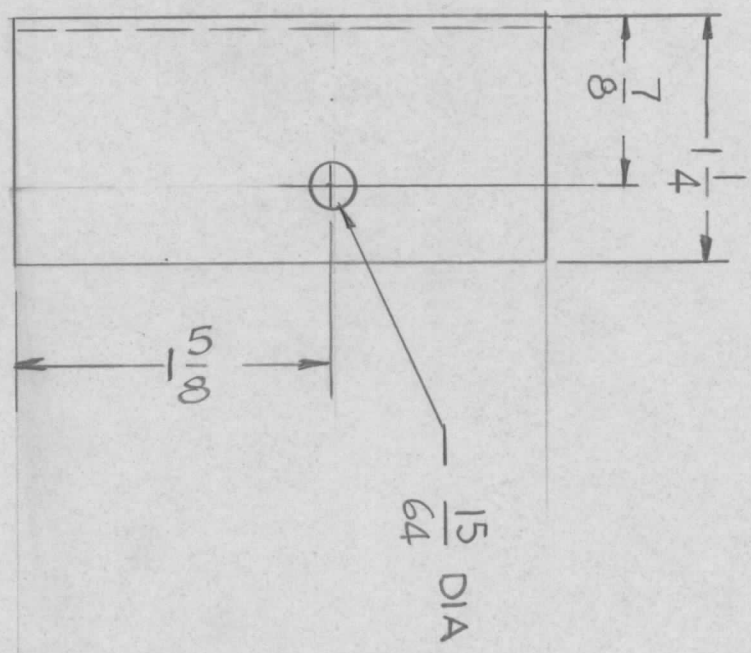
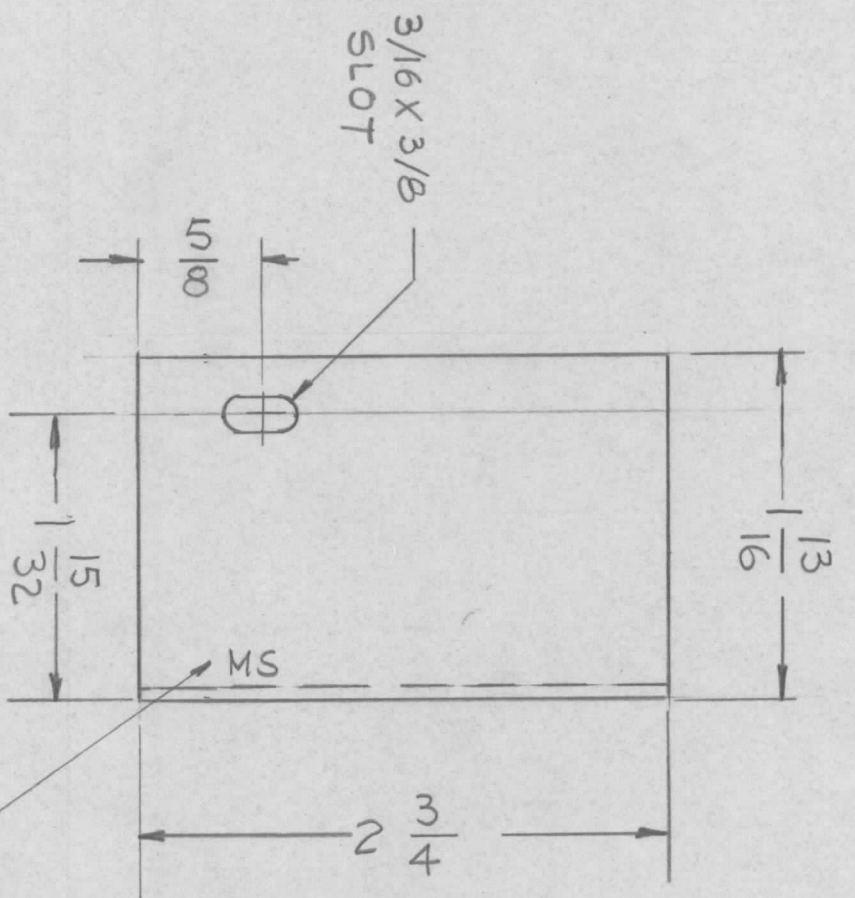
FINAL APPROVAL	DATE
<i>Q.B.</i>	7/10/75
MECH. DES.	DATE
ELECT. DES.	DATE
CHECKED	DATE
DRAWN	DATE
G.D.L.	6-27-75

SIZE	CODE IDENT. NO.	DWG NO.	ISSUE
B	82679	MS 6647	Ø
SCALE	1:1	SHEET	OF

- UNLESS OTHERWISE SPECIFIED:
- USE MATERIAL THICKNESS FOR MAXIMUM RADIUS ON ALL BENDS.
 - ALL ANGULAR BENDS 90 DEGREES.
 - REMOVE ALL BURRS AND SHARP EDGES.

NOTICE TO PERSONS RECEIVING THIS DRAWING
THE TECHNICAL MATERIEL CORPORATION claims proprietary right in the material disclosed hereon. This drawing is issued in confidence for engineering information only and may not be reproduced or used to manufacture anything shown hereon without permission from THE TECHNICAL MATERIEL CORPORATION to the user. This drawing is loaned for mutual assistance and is subject to recall at any time.

REVISIONS				DATE	APPROVED
EMN. NO.	DRAFT	CHKD	ZONE	LTR	DESCRIPTION
	<i>Q</i>			<i>Ø</i>	ORIGINAL RELEASE FOR PRODUCTION
					9/15/75



MARK TMC PART NUMBER
1/8 HIGH GOTHIC WITH LATEST

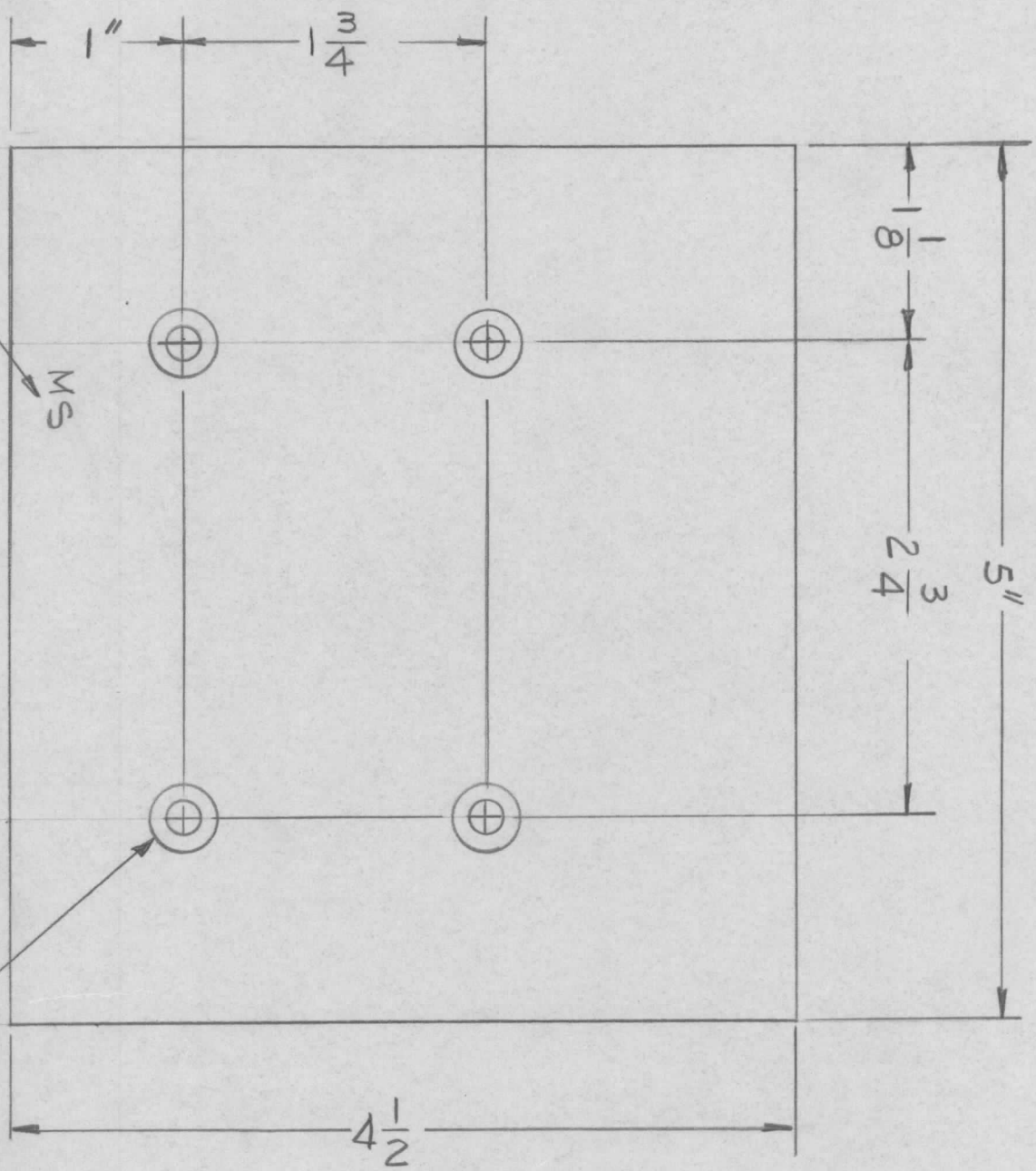
UNLESS OTHERWISE SPECIFIED:
 1. USE MATERIAL THICKNESS FOR MAXIMUM RADIUS ON ALL BENDS.
 2. ALL ANGULAR BENDS 90 DEGREES.
 3. REMOVE ALL BURRS AND SHARP EDGES.

QTY / UNIT	MODEL USED ON	ASSY NO.
	TOC-24-1	
APPLICATION		
	CODE	

NOTICE TO PERSONS RECEIVING THIS DRAWING
 THE TECHNICAL MATERIEL CORPORATION claims proprietary right in the material disclosed hereon. This drawing is issued in confidence for engineering information only and may not be reproduced or used to manufacture anything shown hereon without permission from THE TECHNICAL MATERIEL CORPORATION to the user. This drawing is loaned for mutual assistance and is subject to recall at any time.

REQ'D	ITEM	PART NUMBER	DESCRIPTION	SYM.
			LIST OF MATERIAL	
			THE TECHNICAL MATERIEL CORP. MAMARONECK, NEW YORK	
			BRACKET, RETAINER HFL-100	
			SIZE CODE IDENT. NO. DWG NO.	ISSUE
			B 82679 MS 6648	Ø
			SCALE 1:1	SHEET OF

REVISIONS							
EMN. NO.	DRAFT	CHKD	ZONE	LTR	DESCRIPTION	DATE	APPROVED
				X	EXP. RELEASE		
				Ø	ORIGINAL RELEASE	1-16-77	*



MARK TMC PART NUMBER
1/8 HIGH GOTHIC WITH LATEST
REVISION LETTER

.196 - DIA. C/5NK 82°
TO .390 DIA.
4 REQ

QTY / UNIT	1	SYM	5203	MODEL USED ON		ASS'Y NO.	
APPLICATION		CODE					

NOTICE TO PERSONS RECEIVING THIS DRAWING
THE TECHNICAL MATERIEL CORPORATION claims proprietary right in the material disclosed hereon. This drawing is issued in confidence for engineering information only and may not be reproduced or used to manufacture anything shown hereon without permission from THE TECHNICAL MATERIEL CORPORATION to the user. This drawing is loaned for mutual assistance and is subject to recall at any time.

UNLESS OTHERWISE SPECIFIED
DIMENSIONS ARE IN INCHES
AND INCLUDE CHEMICALLY APPLIED
OR PLATED FINISHES

DECIMALS FRACTIONS
.X ± .05 TOLS. 1/64
.XX ± .01 ANGLES 0° - 30'
.XXX ± .005

MATERIAL - 081 TUK
DL 5052-1132
FINISH 9404
YEL IRIDITE

REQ'D	ITEM	PART NUMBER	DESCRIPTION	SYM.
-------	------	-------------	-------------	------

FINAL APPROVALS	DATE
MECH. DES.	DATE
ELECT. DES.	DATE
CHECKED	DATE
DRAWN	DATE

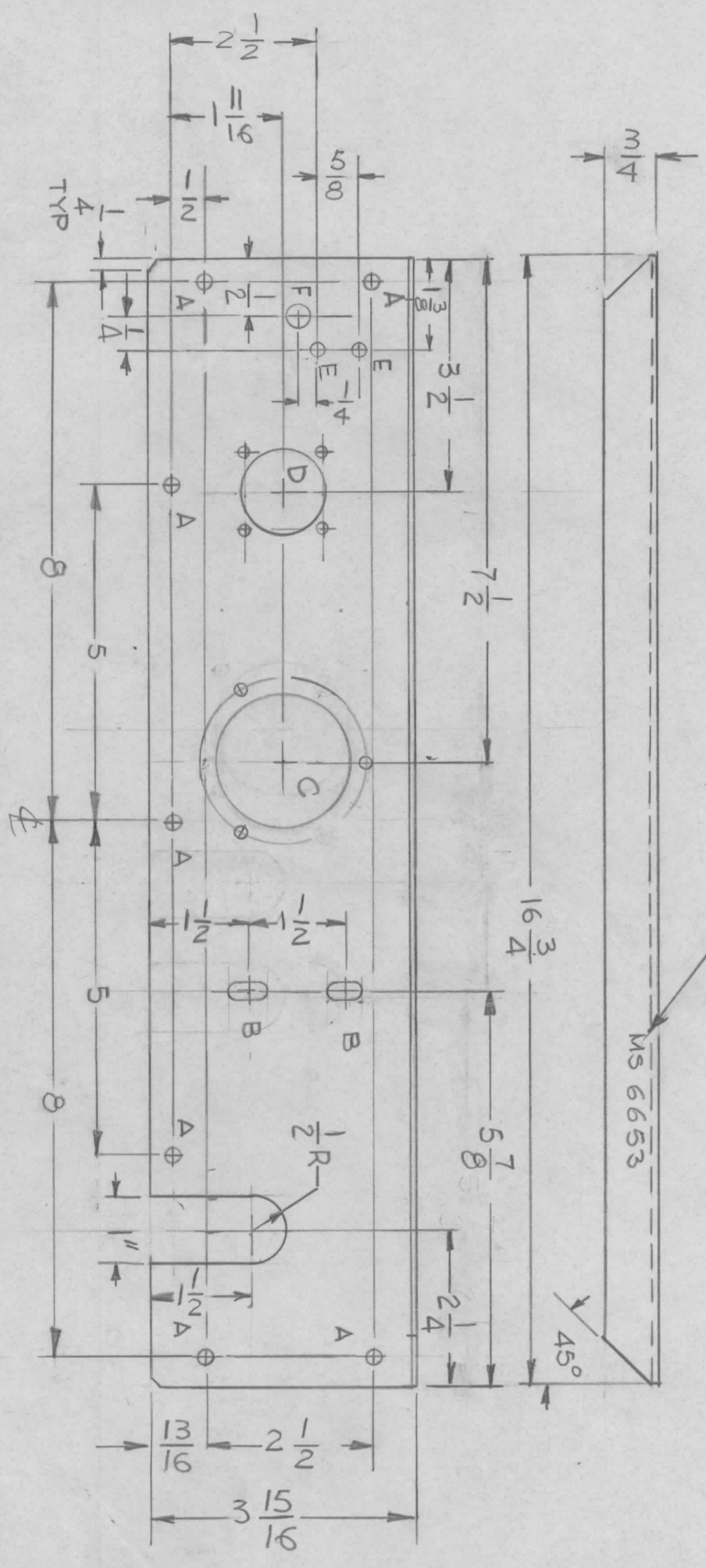
DATE 1/72
DATE 6-27-75
DRAWN G.D.L.

LIST OF MATERIAL
THE TECHNICAL MATERIEL CORP.
MAMARONECK, NEW YORK

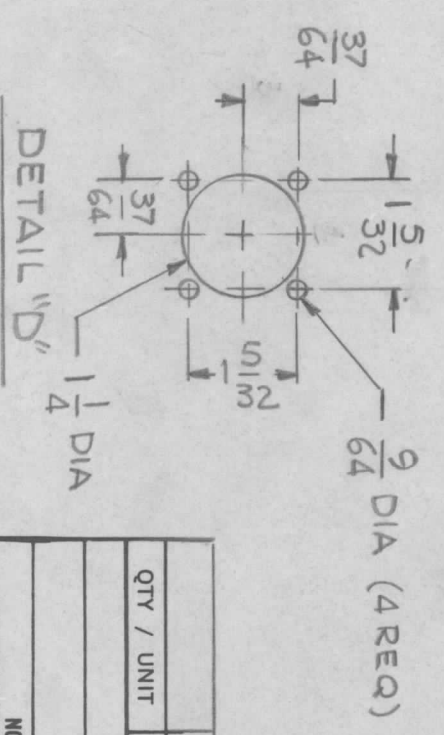
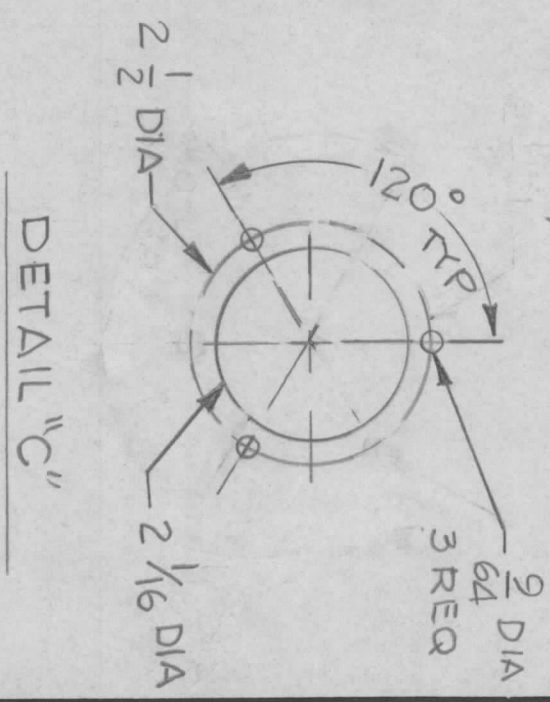
PLATE, RETAINER RODS
SIZE CODE IDENT. NO. DWG NO. ISSUE
B 82679 MS 6649 Ø
SCALE 1:1 SHEET OF

REVISIONS			DESCRIPTION	DATE	APPROVED
EM/N NO.	DRAFT	CHKD	ZONE	LTR	
				X	EXP. RELEASE
				X1	ADD TWO "E" & ONE "F" HOLES
				Ø	ORIGINAL RELEASE
					1-10-77

MARK TMC PART NUMBER
1/8 HIGH GOTHIC WITH LATEST
REVISION LETTER



- HOLES
- A - 13/64 DIA 7 REQ
 - B - 1/4 X 1/2 2 REQ
 - C - SEE DETAIL 1 REQ
 - D - SEE DETAIL 1 REQ
 - E - 11/64 DIA 2 REQ
 - F - 5/16 DIA 1 REQ



REF: LD3044

QTY / UNIT	MODEL USED ON	ASS'Y NO.
	AP156	
	APPLICATION	
	CODE	

NOTICE TO PERSONS RECEIVING THIS DRAWING
THE TECHNICAL MATERIEL CORPORATION claims proprietary right in the material disclosed hereon. This drawing is issued in confidence for engineering information only and may not be reproduced or used to manufacture anything shown hereon without permission from THE TECHNICAL MATERIEL CORPORATION to the user. This drawing is loaned for mutual assistance and is subject to recall at any time.

DECIMALS	FRACTIONS	TOLS.	ANGLES
X ± .05	1/64	.XX ± .01	0° - 30'
.XXX ± .005			
MATERIAL .081THK			
AL 5052-H32			
FINISH S404			
YEL. IRIDITE			

REQ'D ITEM	PART NUMBER	DATE
		1-10-77
		8-14-75

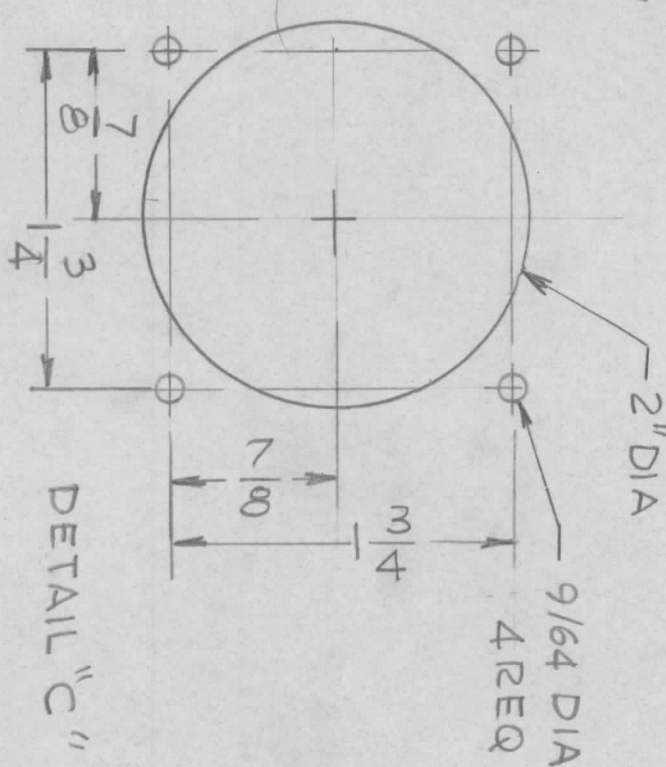
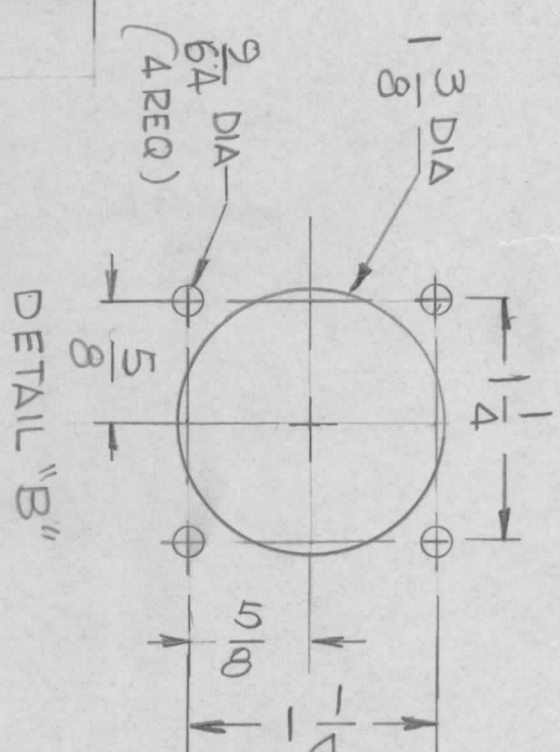
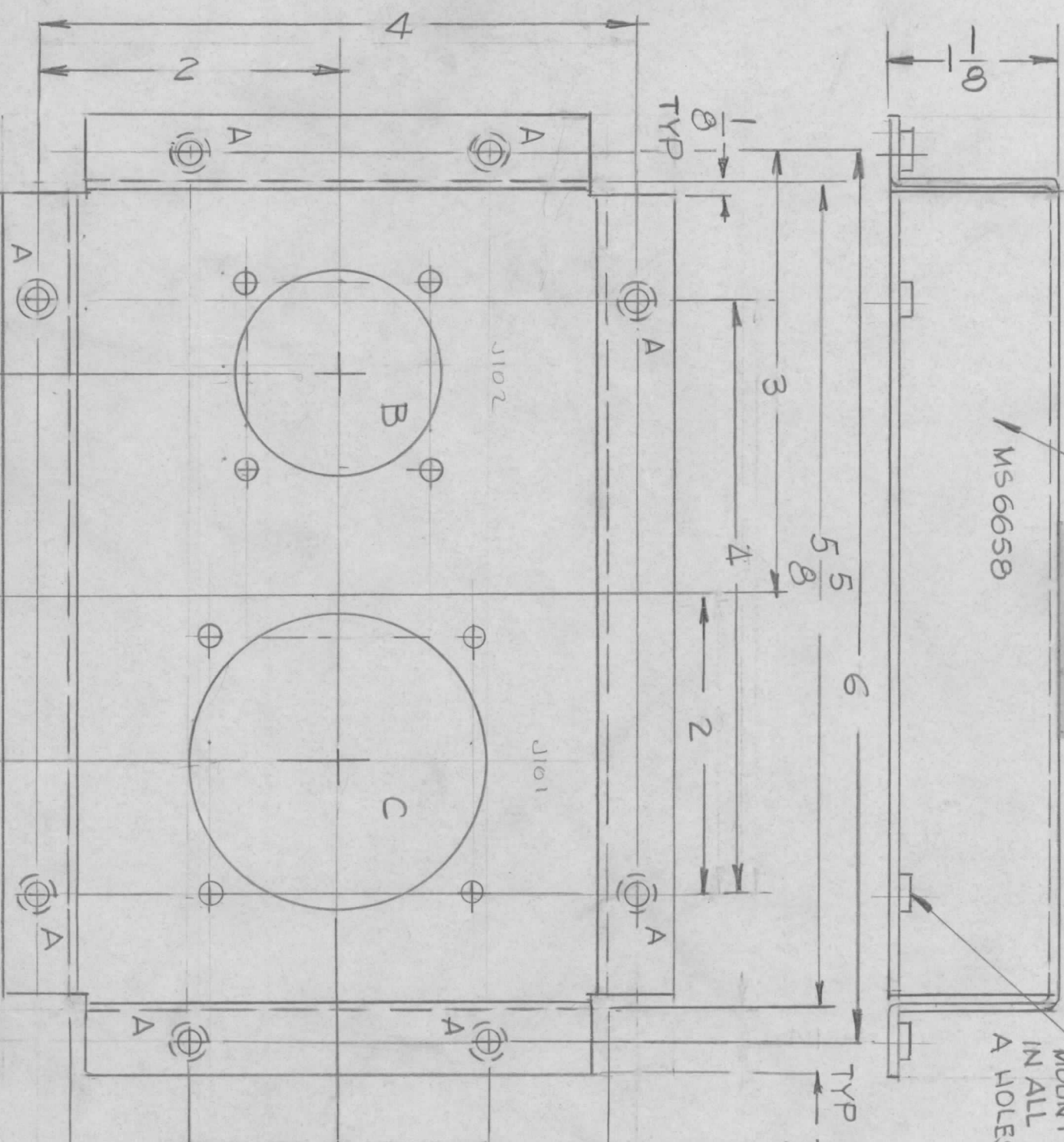
DESCRIPTION	SYM.
LIST OF MATERIAL	
THE TECHNICAL MATERIEL CORP. MAMARONECK, NEW YORK	
PLATE, REAR	
SIZE	CODE IDENT. NO.
B	82679
SCALE	DWG NO.
1:2	MS 6653
SHEET	ISSUE
1	Ø

MARK TMC PART NUMBER
1/8 HIGH GOTHIC WITH LATEST
REVISION LETTER

MS 6658

① MOUNT
IN ALL
A HOLES

REVISIONS				DESCRIPTION	DATE	APPROVED
EM.N NO.	DRAFT	CHKD	ZONE	LTR		
	GDL				ORIGINAL	RELEASE
					1-10-77	



HOLE
A - .191-.194 DIA 8 REQ
B - SEE DETAIL 1 REQ
C - SEE DETAIL

UNLESS OTHERWISE SPECIFIED:

1. USE MATERIAL THICKNESS FOR MAXIMUM RADIUS ON ALL BENDS.
2. ALL ANGULAR BENDS 90 DEGREES.
3. REMOVE ALL BURRS AND SHARP EDGES.
4. MOUNT INSERTS AFTER FINISHING.

QTY / UNIT	MODEL USED ON	ASSY NO.
1	SYM 5204	AX 5206
APPLICATION		
CODE		

NOTICE TO PERSONS RECEIVING THIS DRAWING
THE TECHNICAL MATERIEL CORPORATION claims proprietary right in the material disclosed hereon. This drawing is issued in confidence for engineering information only and may not be reproduced or used to manufacture anything shown hereon without permission from THE TECHNICAL MATERIEL CORPORATION to the user. This drawing is loaned for mutual assistance and is subject to recall at any time.

REF: LD3043

UNLESS OTHERWISE SPECIFIED
DIMENSIONS ARE IN INCHES
AND INCLUDE CHEMICALLY APPLIED
OR PLATED FINISHES

DECIMALS	FRACTIONS
.X ± .05	1/64
.XX ± .01	TOLS. ANGLES
.XXX ± .005	0° - 30'

FINISH S404 YEL. 1B1PBT
S114 ZING CHD20H
S521 TMC GRAYTE XUPATED

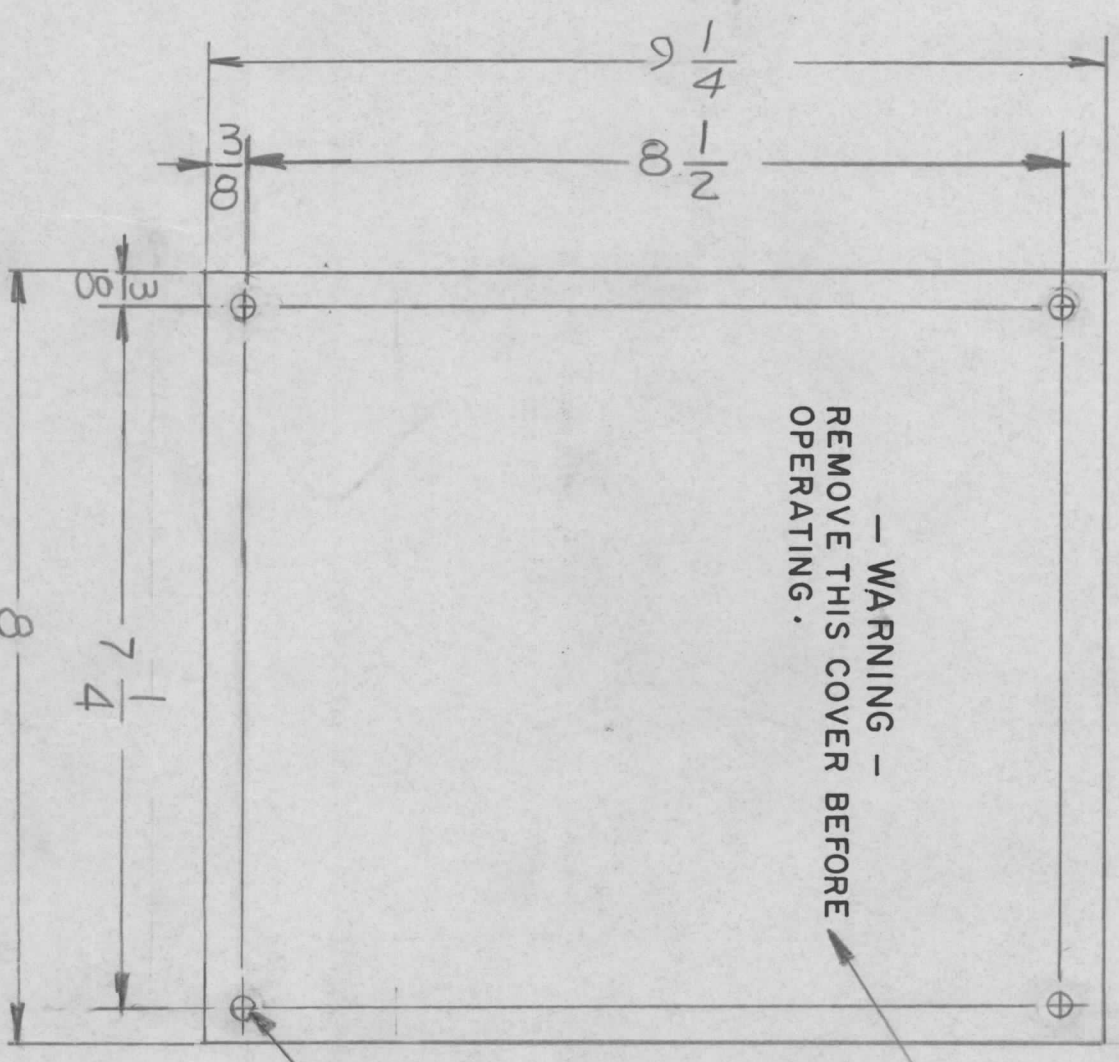
REQ'D ITEM	PART NUMBER	DESCRIPTION	SYM.
B 1	NT1290632-4	NUT, ROUND	

THE TECHNICAL MATERIEL CORP.
MAMARONECK, NEW YORK

BRACKET MTG. CONNECTOR

SIZE	CODE IDENT. NO.	DWG. NO.	ISSUE
B	82679	M3 6658	0
SCALE	1:1	SHEET	OF

REVISIONS							
EM.N. NO.	DRAFT	CHKD	ZONE	LTR	DESCRIPTION	DATE	APPROVED
1	gdl				ORIGINAL RELEASE	1-10-77	*



- WARNING -
REMOVE THIS COVER BEFORE
OPERATING.

MARKING 3/16 HIGH BLACK
GOTHIC, LOCATED APPROX.
LOCATED AS SHOWN

15/64 DIA
4 REQ

FINISH NOTES:
1- S404 YEL IRIDITE
2- S114 ZINC CHROMATE
3- S521 TMC GRAY
TEXTURED PAINT

QTY / UNIT	1	MODEL USED ON	SYM 5204	ASS'Y NO.	TOC-25-3
APPLICATION					
CODE					

NOTICE TO PERSONS RECEIVING THIS DRAWING
THE TECHNICAL MATERIEL CORPORATION claims proprietary right in the material disclosed hereon. This drawing is issued in confidence for engineering information only and may not be reproduced or used to manufacture anything shown hereon without permission from THE TECHNICAL MATERIEL CORPORATION to the user. This drawing is loaned for mutual assistance and is subject to recall at any time.

REQ'D ITEM	PART NUMBER	DESCRIPTION	SYM.
		LIST OF MATERIAL	

UNLESS OTHERWISE SPECIFIED DIMENSIONS ARE IN INCHES AND INCLUDE CHEMICALLY APPLIED OR PLATED FINISHES	FINAL APPROVAL	DATE
MECH. DES.	<i>[Signature]</i>	1-10-77
ELECT. DES.		
CHECKED		
DRAWN	G.D.L.	

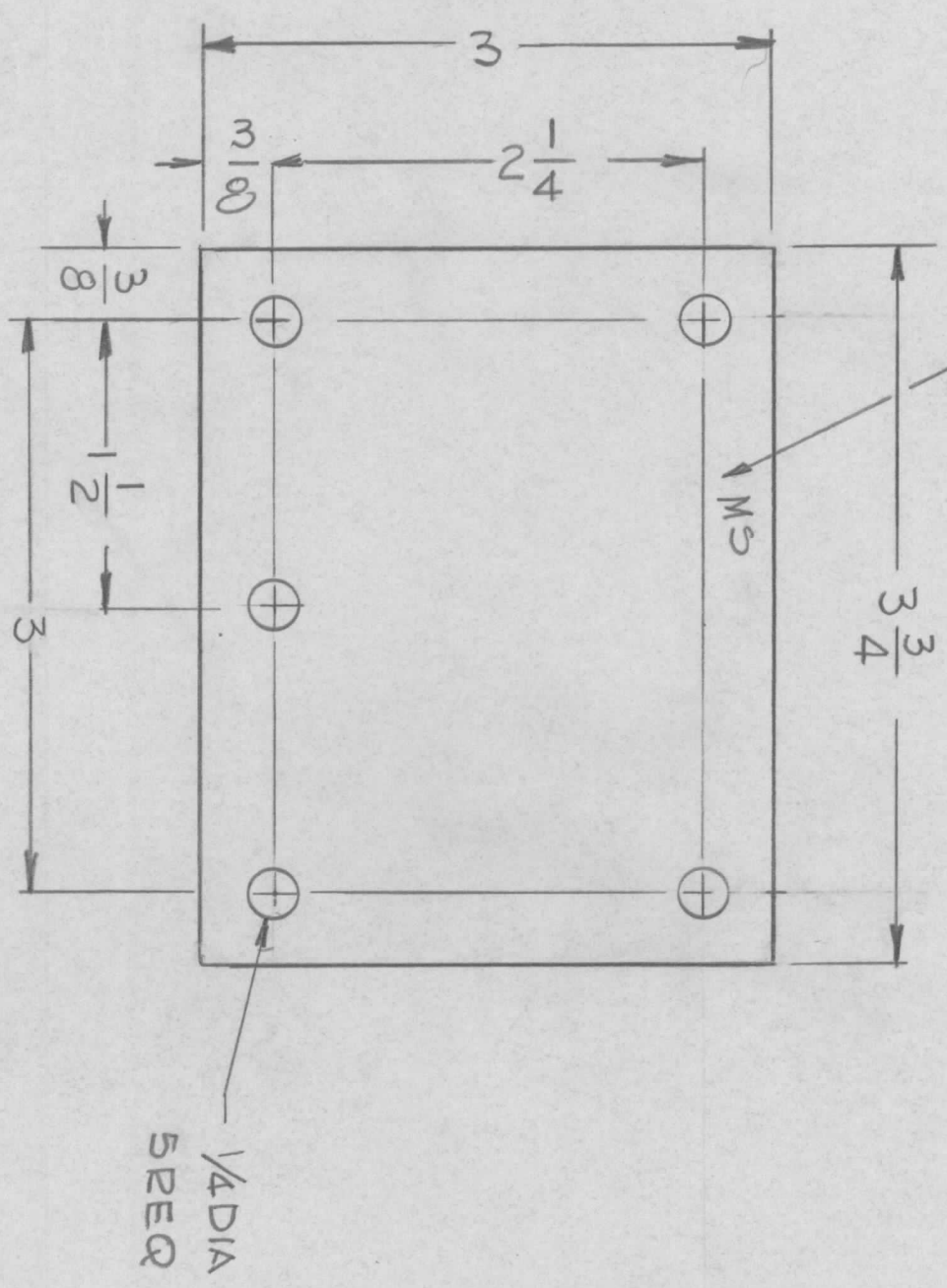
DECIMALS	FRACTIONS	ANGLES
X ± .05	1/64	90° .30'
.XX ± .01		
.XXX ± .005		
MATERIAL	.064 THK	
ALUM	S052-H32	
FINISH	S404 YEL IRID	
	S114 ZINC CHROM	
	TMC GRAY TEXTURED	
SIZE	CODE IDENT. NO.	DWG NO.
B	82679	MS6660
SCALE	1:1	SHEET
		OF
		ISSUE
		<i>[Signature]</i>

THE TECHNICAL MATERIEL CORP.
MAMARONECK, NEW YORK

COVER, DUST

REVISIONS							
EM.N. NO.	DRAFT	CHKD	ZONE	LTR	DESCRIPTION	DATE	APPROVED
	MSDL				ORIGINAL	1-10-77	*

MARK TMC P/NO 1/8 HIGH
GOTHIC W/LATEST REV LETTER



QTY / UNIT	2	SYM 5204	AX 5206
MODEL USED ON	APPLICATION		
CODE			

NOTICE TO PERSONS RECEIVING THIS DRAWING
THE TECHNICAL MATERIEL CORPORATION claims proprietary right in the material disclosed hereon. This drawing is issued in confidence for engineering information only and may not be reproduced or used to manufacture anything shown hereon without permission from THE TECHNICAL MATERIEL CORPORATION to the user. This drawing is loaned for mutual assistance and is subject to recall at any time.

UNLESS OTHERWISE SPECIFIED DIMENSIONS ARE IN INCHES AND INCLUDE CHEMICALLY APPLIED OR PLATED FINISHES	DECIMALS X ± .05 .XX ± .01 .XXX ± .005	FRACTIONS 1/64 ANGLES 0° .30'	FINISH S404 YEL IRIDITE
MATERIAL, 081THK	AL 5052-H32		

REQ'D	ITEM	PART NUMBER	DESCRIPTION	SYM.
			PLATE, MTG HANDLE	

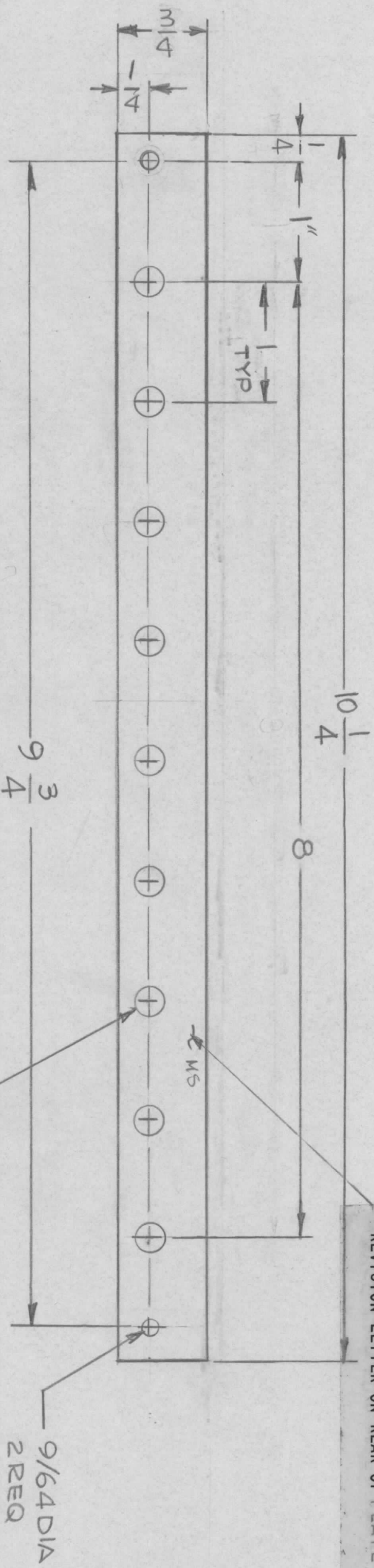
FINAL APPROVAL	MECH. DES.	DATE	1-10-77
ELECT. DES.	DATE		
CHECKED	DATE		
DRAWN	G. D. LUCIA	DATE	1-2-75

SIZE	B	CODE IDENT. NO.	82679	DWG NO.	MS 6664	ISSUE	
SCALE	1:1						

REVISIONS				DATE	APPROVED
EM.N. NO.	DRAFT	CHKD	ZONE	LTR	DESCRIPTION
					EXP. RELEASE

9-76

MARK TMC PART NUMBER
1/8 HIGH GOTHIC WITH LATEST
REVISION LETTER ON REAR OF PLATE



1/4 DIA
9 REQ

9/64 DIA
2 REQ

- FINISH NOTES:**
1. S404 - IRIDITE 14-2 AL-COAT.
 2. S114 - ZINC CHROMATE PRIMER
 3. S115 - SMOOTH GRAY ENAMEL
- OR
PRIME AND PAINT PER CUSTOMER'S SPECIFICATIONS
- FRONT AND EDGES ONLY

QTY / UNIT	1	MODEL USED ON	HFTM-10K ()	ASS'Y NO.	8
APPLICATION					
CODE					

NOTICE TO PERSONS RECEIVING THIS DRAWING
THE TECHNICAL MATERIEL CORPORATION claims proprietary right in the material disclosed hereon. This drawing is issued in confidence for engineering information only and may not be reproduced or used to manufacture anything shown hereon without permission from THE TECHNICAL MATERIEL CORPORATION to the user. This drawing is loaned for mutual assistance and is subject to recall at any time.

REF: LD3045

UNLESS OTHERWISE SPECIFIED
DIMENSIONS ARE IN INCHES
AND INCLUDE CHEMICALLY APPLIED
OR PLATED FINISHES

DECIMALS	FRACTIONS
.X ± .05	1/64
.XX ± .01	TOLS.
.XXX ± .005	ANGLES 0° - 30'

MATERIAL .051 THK
ALY 5052-H32
FINISH
SEE NOTE

REQ'D ITEM PART NUMBER DESCRIPTION SYM.

FINAL APPROVAL	DATE
<i>[Signature]</i>	9-12-76
MECH. DES.	DATE
ELECT. DES.	DATE
CHECKED	DATE
DRAWN	DATE

DRAWN G.D. LUCIA
DATE 9-14-75

SIZE CODE IDENT. NO. DWG. NO. ISSUE

LIST OF MATERIAL

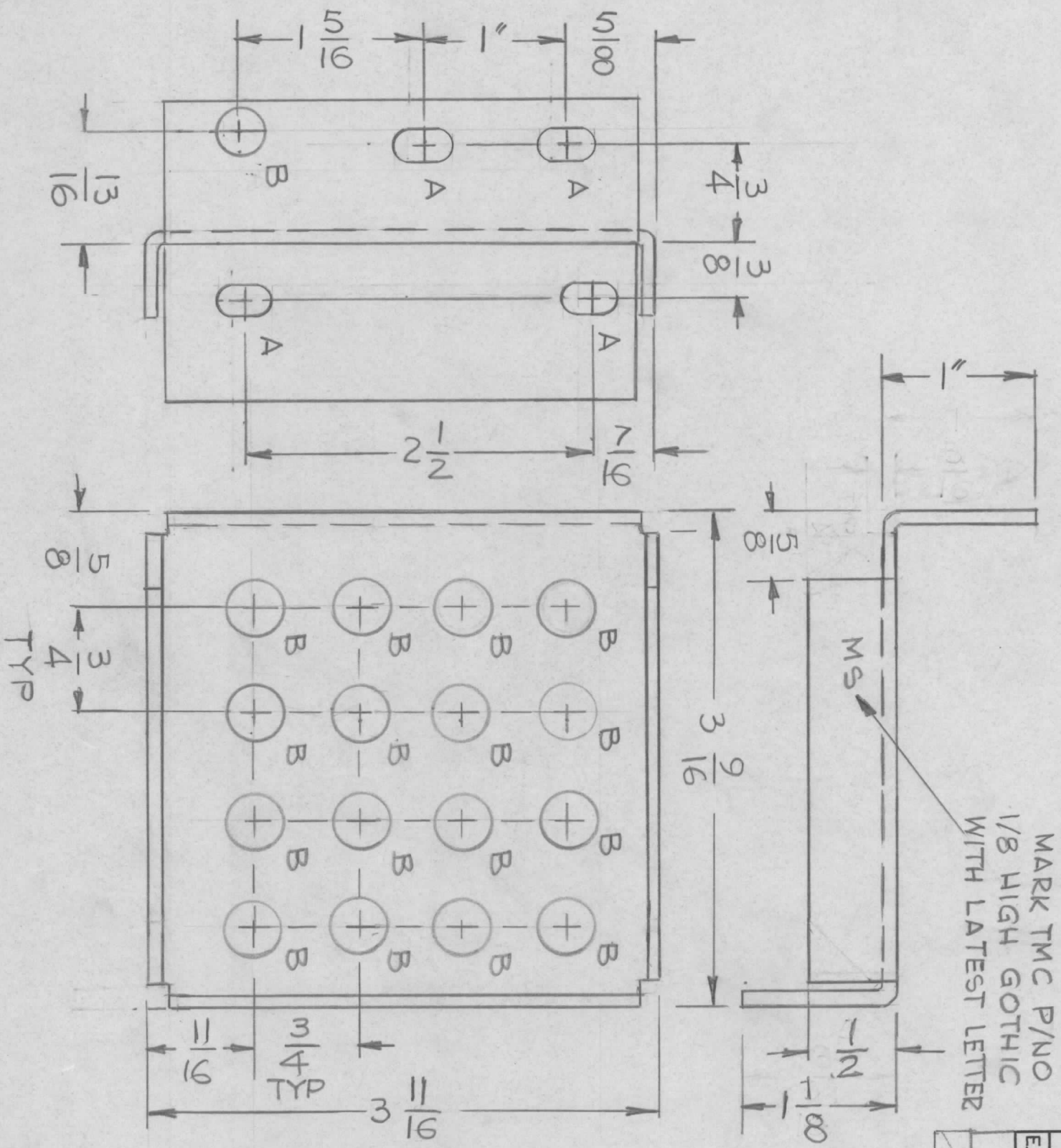
THE TECHNICAL MATERIEL CORP.
MAMARONECK, NEW YORK

PLATE, INDICATOR

SIZE B
CODE IDENT. NO. 82679
DWG. NO. MS 6666
ISSUE

SCALE 1:1 SHEET 1 OF 1

REVISIONS							
EM.N. NO.	DRAFT	CHKD	ZONE	LTR	DESCRIPTION	DATE	APPROVED
	GDL				REDRAWN WITH CHANGE	6-15-76	
					ORIGINAL Release	1-10-77	*



HOLES :
 A - 1/4 X 3/8 SLOT 4 REQ
 B - 7/16 DIA 17 REQ

MS 6667-1 AS SHOWN 1 REQ
 MS 6667-2 MIRROR IMAGE 12 REQ

QTY / UNIT	1	MODEL USED ON	TOC-25-1	ASSY NO.	
APPLICATION		CODE			

DECIMALS	X ± .05	TOLS.	FRACTIONS	1/64
	.XX ± .01		ANGLES	0° - 30'
	.XXX ± .005			
MATERIAL	.081 THK			
FINISH	ALY 5052-H32			
	5404			
	VEL IRIDITE			

REQ'D	ITEM	PART NUMBER	DESCRIPTION	SYM.

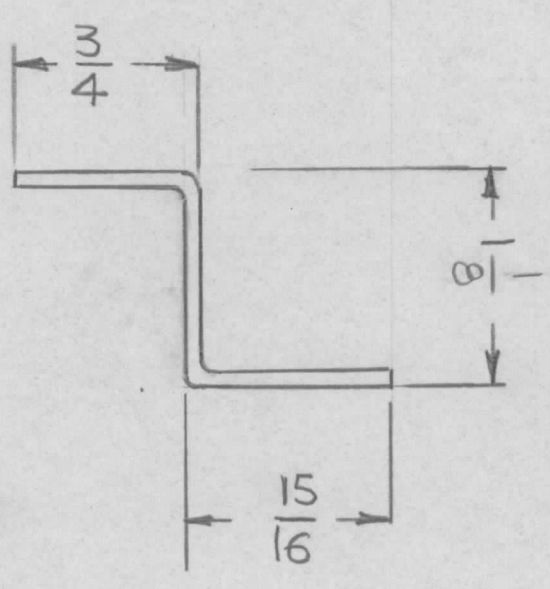
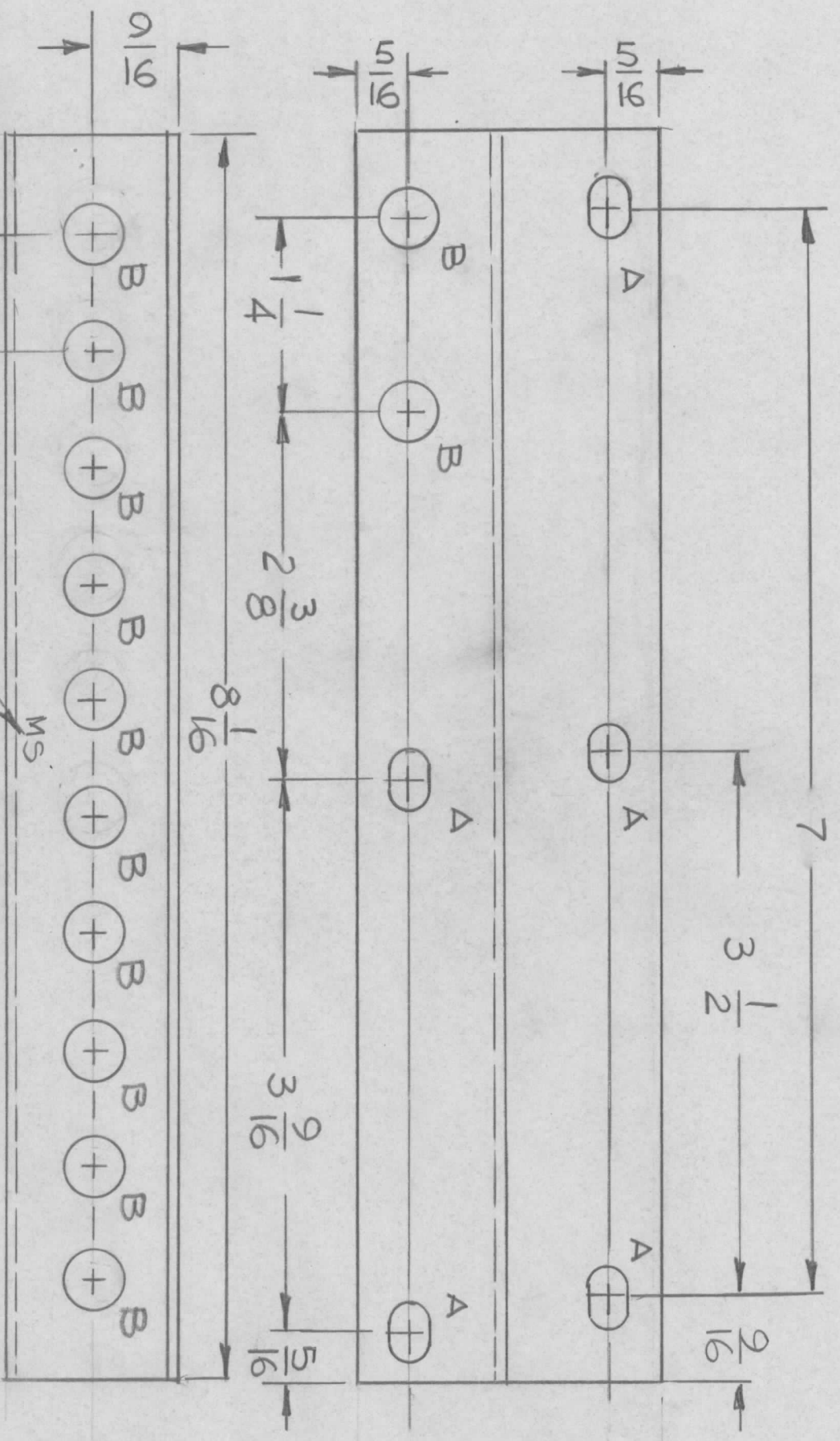
FINAL APPROVAL	MECH. DES.	DATE	DATE
		1-10-77	
ELECT. DES.	CHECKED	DATE	DATE
		6-15-76	
DRAWN G.D.L.			

LIST OF MATERIAL

NOTICE TO PERSONS RECEIVING THIS DRAWING
 THE TECHNICAL MATERIEL CORPORATION claims proprietary right in the material disclosed hereon. This drawing is issued in confidence for engineering information only and may not be reproduced or used to manufacture anything shown hereon without permission from THE TECHNICAL MATERIEL CORPORATION to the user. This drawing is loaned for mutual assistance and is subject to recall at any time.

THE TECHNICAL MATERIEL CORP.	MAMARONECK, NEW YORK		
BRACKET, RETAIN.	(AP156)		
SIZE	CODE IDENT. NO.	DWG NO.	ISSUE
B	82679	MS 6667	0
SCALE	1:1	SHEET	OF

REVISIONS							
EM.N. NO	DRAFT	CHKD	ZONE	LTR	DESCRIPTION	DATE	APPROVED
		G.D.L.			REDDRAWN WITH CHANGE	6-14-76	
					ORIGINAL RELEASE	1-10-77	



HOLE S
 A - 1/4 X 3/8 SLOT 5 REQ
 B - 3/8 DIA 12 REQ

MS 6668 - 1 AS SHOWN - 1REQ
 MS 6668 - 2 MIRROR IMAGE - 12REQ

- UNLESS OTHERWISE SPECIFIED:
1. USE MATERIAL THICKNESS FOR MAXIMUM RADIUS ON ALL BENDS.
 2. ALL ANGULAR BENDS 90 DEGREES.
 3. REMOVE ALL BURRS AND SHARP EDGES.

MARK TMC PART NO. 1/8 HIGH
 GOTHIC WITH LATEST REV. LETTER
 MS

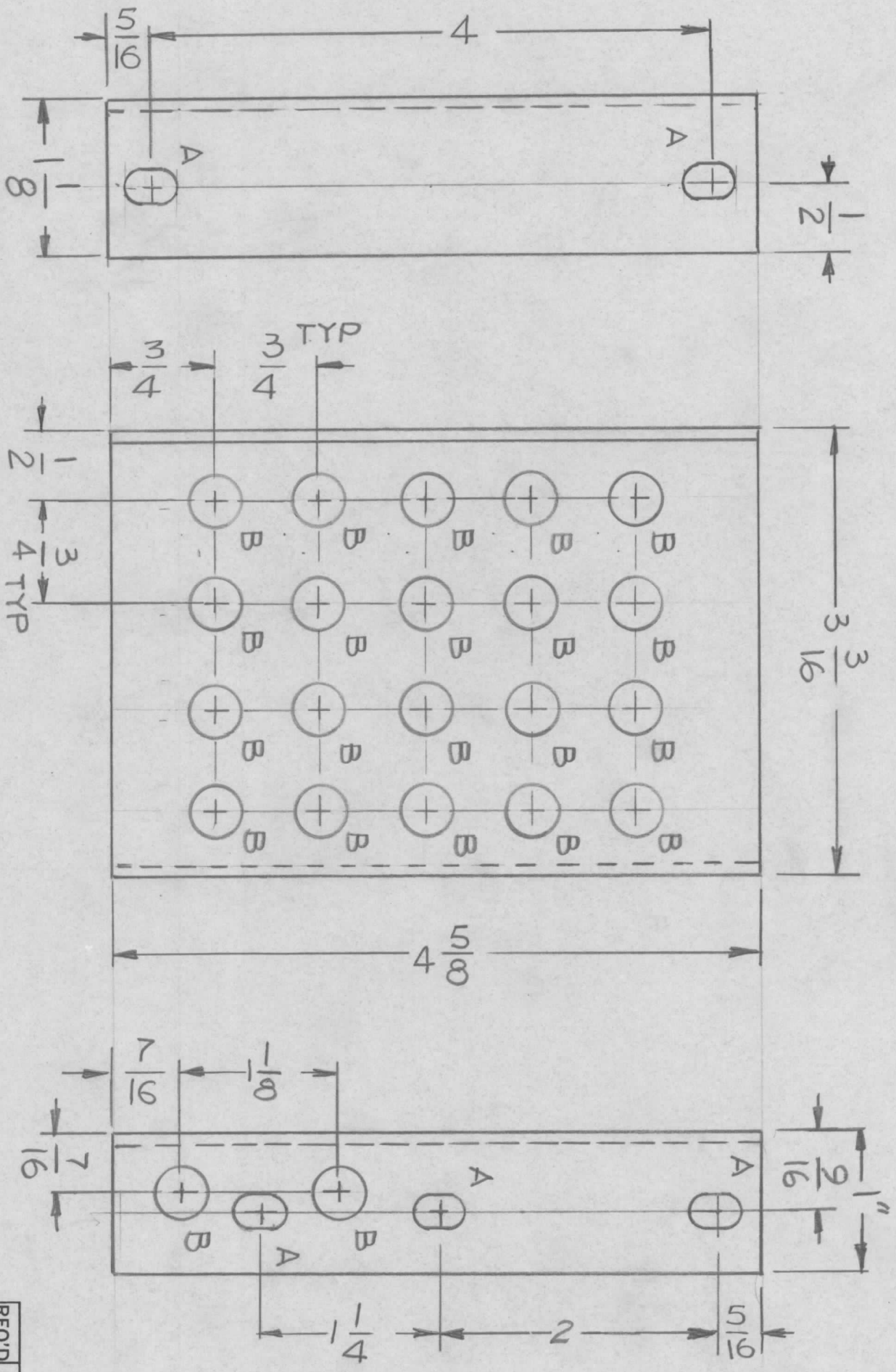
QTY / UNIT	MODEL USED ON	ASS'Y NO.
1	TOC-25-3	
APPLICATION CODE		

DECIMALS	FRACTIONS
X ± .05	1/64
.XX ± .01	TOLS. ANGLES
.XXX ± .005	0° .30'
MATERIAL 064 THK	
ALY 5052-H32	
FINISH SA04	
YEL IRIDITE	

REQ'D ITEM	PART NUMBER	DESCRIPTION	SYM.
LIST OF MATERIAL			
THE TECHNICAL MATERIEL CORP. MAMARONECK, NEW YORK			
BRACKET, RETAIN (TLAA)			
SIZE	CODE IDENT. NO.	DWG NO.	ISSUE
B	82679	MS 6668	
SCALE	1:1	SHEET	OF

MS 6669 AS SHOWN 1 REQ
 MS 6669-2 MIRROR IMAGE 1 REQ

REVISIONS							
EM.N. NO.	DRAFT	CHKD	ZONE	LTR	DESCRIPTION	DATE	APPROVED
	GDL				REDRAWN WITH CHANGES	6-17-76	
					ORIGINAL RELEASE	1-10-77	*



HOLE S
 A - 1/4 X 3/8 SLOT 5 REQ
 B - 3/8 DIA 22 REQ

UNLESS OTHERWISE SPECIFIED:

1. USE MATERIAL THICKNESS FOR MAXIMUM RADIUS ON ALL BENDS.
2. ALL ANGULAR BENDS 90 DEGREES.
3. REMOVE ALL BURRS AND SHARP EDGES.
4. MOUNT INSERTS AFTER FINISHING.

QTY / UNIT	1	MODEL USED ON	TOC-25-1	ASS'Y NO.	
APPLICATION		CODE			

DECIMALS	FRACTIONS
X ± .05	1/64
.XX ± .01	TOLS. ANGLES
.XXX ± .005	0° .30'
MATERIAL	.081 THK
FINISH	ALY 5052-H32
	9404
	YEL IRIDITE

REQ'D ITEM	PART NUMBER	DESCRIPTION	SYM.
		BRACKET, RETAIN (TFP-1K)	

FINAL APPROVAL	DATE	MECH. DES.	DATE	ELECT. DES.	DATE	CHECKED	DATE	DRAWN	DATE
GDL	1-10-77							GDL	6-17-76

THE TECHNICAL MATERIEL CORP.
 MAMARONECK, NEW YORK

UNLESS OTHERWISE SPECIFIED:

1. USE MATERIAL THICKNESS FOR MAXIMUM RADIUS ON ALL BENDS.
2. ALL ANGULAR BENDS 90 DEGREES.
3. REMOVE ALL BURRS AND SHARP EDGES.
4. MOUNT INSERTS AFTER FINISHING.

QTY / UNIT	1	MODEL USED ON	TOC-25-1	ASS'Y NO.	
APPLICATION		CODE			

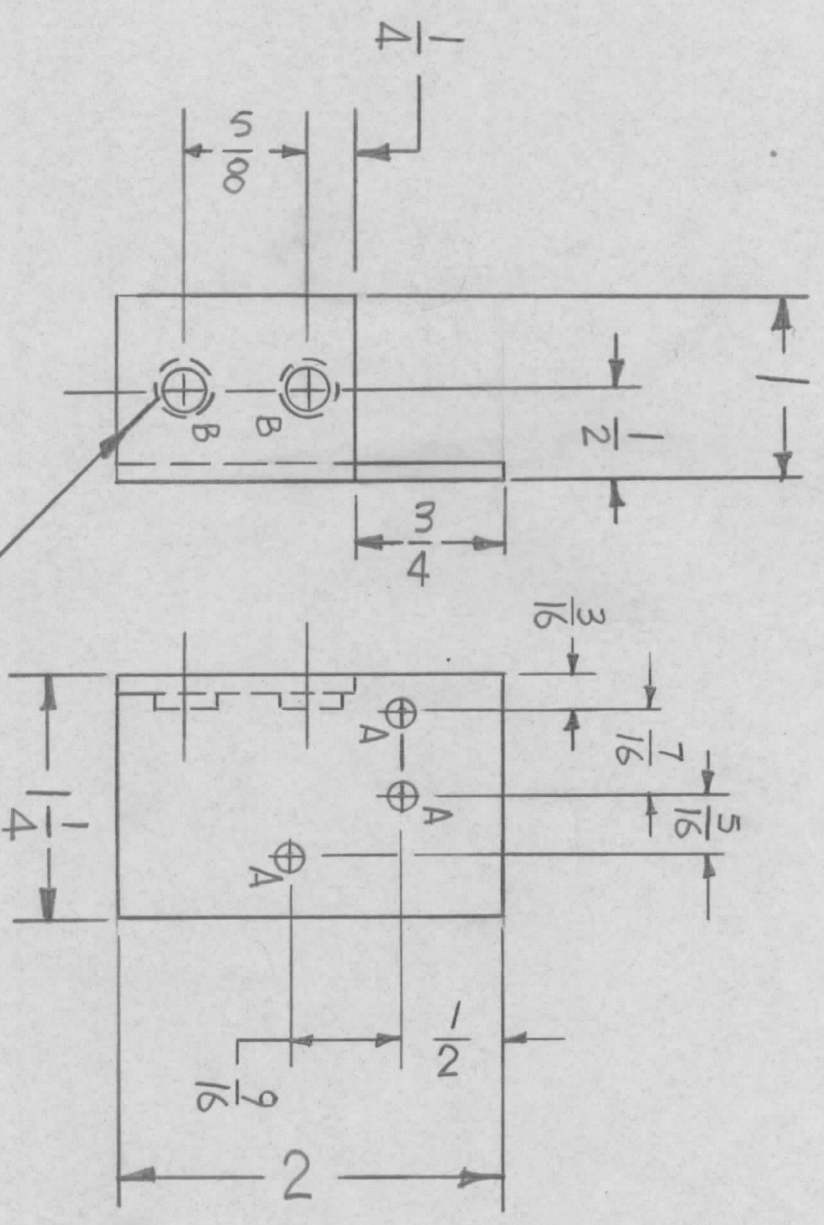
DECIMALS	FRACTIONS
X ± .05	1/64
.XX ± .01	TOLS. ANGLES
.XXX ± .005	0° .30'
MATERIAL	.081 THK
FINISH	ALY 5052-H32
	9404
	YEL IRIDITE

REQ'D ITEM	PART NUMBER	DESCRIPTION	SYM.
		BRACKET, RETAIN (TFP-1K)	

FINAL APPROVAL	DATE	MECH. DES.	DATE	ELECT. DES.	DATE	CHECKED	DATE	DRAWN	DATE
GDL	1-10-77							GDL	6-17-76

THE TECHNICAL MATERIEL CORP.
 MAMARONECK, NEW YORK

REVISIONS				DATE	APPROVED
EMN. NO.	DRAFT	CHKD	ZONE	LTR	DESCRIPTION
					EXP. RELEASE
					ORIGINAL RELEASE
					1-10-77



A ~ 1/8 DIA
B ~ .191 - 194

- UNLESS OTHERWISE SPECIFIED:
1. USE MATERIAL THICKNESS FOR MAXIMUM RADIUS ON ALL BENDS.
 2. ALL ANGULAR BENDS 90 DEGREES.
 3. REMOVE ALL BURRS AND SHARP EDGES.
 4. MOUNT INSERTS AFTER FINISHING.

1 MOUNT IN ALL "B" HOLES

1	TFP-1K	
1	AP 156	
QTY / UNIT		MODEL USED ON
		ASSY NO.
		APPLICATION
		CODE

NOTICE TO PERSONS RECEIVING THIS DRAWING
THE TECHNICAL MATERIEL CORPORATION claims proprietary right in the material disclosed hereon. This drawing is issued in confidence for engineering information only and may not be reproduced or used to manufacture anything shown hereon without permission from THE TECHNICAL MATERIEL CORPORATION to the user. This drawing is loaned for mutual assistance and is subject to recall at any time.

DECIMALS	FRACTIONS
X ± .05	1/64
.XX ± .01	ANGLES
.XXX ± .005	0° - 30'
MATERIAL .064 THK	DRAWN
ALY. 5052-H32	DATE
FINISH 5404	
YEL IRIDITE	

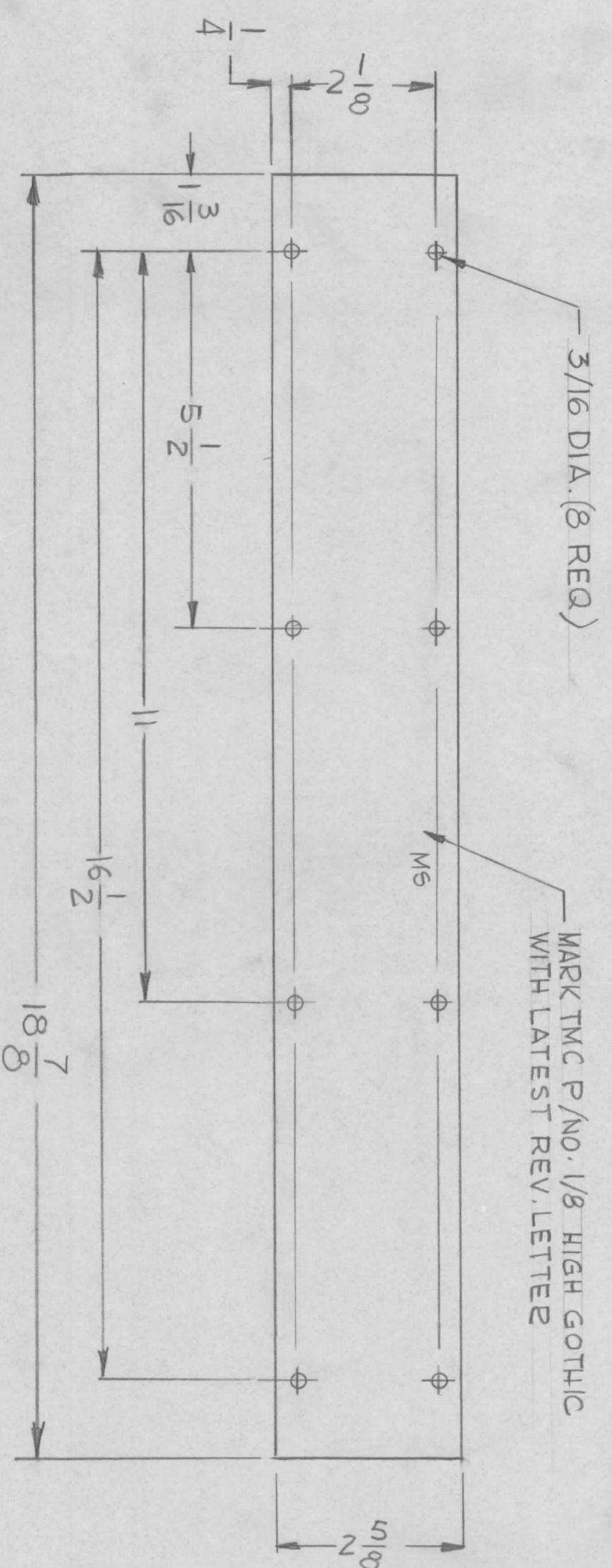
REQ'D	ITEM	PART NUMBER	DESCRIPTION	SYM.
2	1	NT 129-632A	NUT, ROUND	B

LIST OF MATERIAL
THE TECHNICAL MATERIEL CORP.
MAMARONECK, NEW YORK

FINAL APPROVAL	DATE	SIZE	CODE IDENT. NO.	DWG NO.	ISSUE
<i>[Signature]</i>	1-10-77	B	82679	MS 6670	1
MECH. DES.	DATE	SCALE	1:1	SHEET	OF
ELECT. DES.	DATE				
CHECKED	DATE				
DRAWN	DATE				
<i>[Signature]</i>	1-10-77				

BRACKET MTG MICROSWITCH

REVISIONS							
EM.N. NO.	DRAFT	CHKD	ZONE	LTR	DESCRIPTION	DATE	APPROVED
	Dr.					8/16	



QTY / UNIT	1	MODEL USED ON	HFLM-10X/1	ASS'Y NO.	
APPLICATION		CODE			

NOTICE TO PERSONS RECEIVING THIS DRAWING
 THE TECHNICAL MATERIEL CORPORATION claims proprietary right in the material disclosed hereon. This drawing is issued in confidence for engineering information only and may not be reproduced or used to manufacture anything shown hereon without permission from THE TECHNICAL MATERIEL CORPORATION to the user. This drawing is loaned for mutual assistance and is subject to recall at any time.

UNLESS OTHERWISE SPECIFIED DIMENSIONS ARE IN INCHES AND INCLUDE CHEMICALLY APPLIED OR PLATED FINISHES	DECIMALS X ± .05 .XX ± .01 .XXX ± .005	TOLS.	FRACTIONS 1/64 ANGLES 0° - 30'
MATERIAL	ALUM 5052-H32	FINISH	S404 YEL. IRIDITE

REQ'D	ITEM	PART NUMBER	DESCRIPTION	SYM.
			COVER, CABLE DUCT	

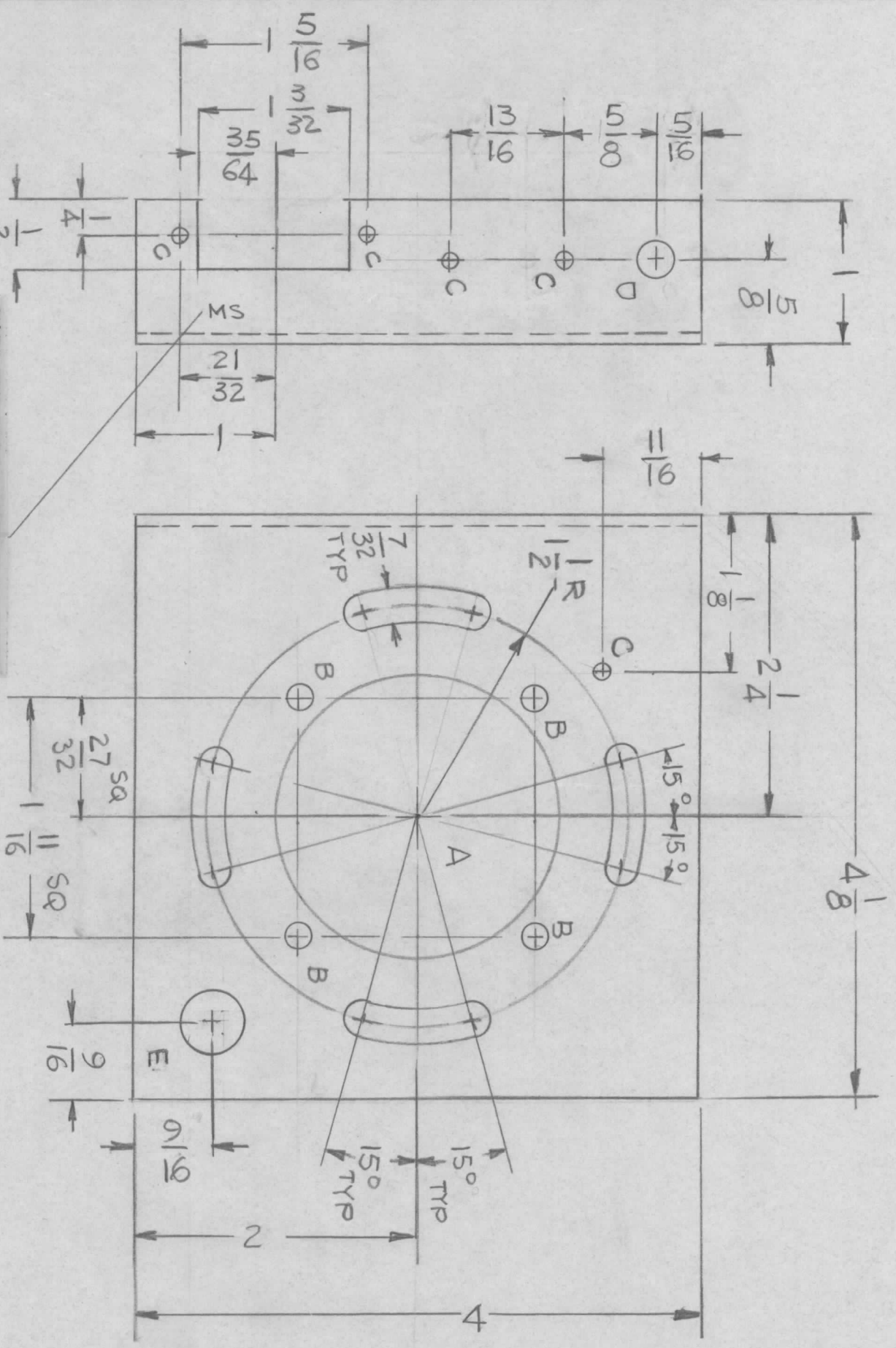
FINAL APPROVAL	MECH. DES.	DATE	8-12-76
ELECT. DES.	CHECKED	DATE	1-16-76
DRAWN	G.D.L.	DATE	1-16-76

THE TECHNICAL MATERIEL CORP.
 MAMARONECK, NEW YORK

SIZE CODE IDENT. NO. DWG NO. ISSUE
 B 82679 MS6683

SCALE 1/2 SHEET OF

REVISIONS				DATE	APPROVED
EM.N. NO.	DRAFT	CHKD	ZONE	LTR	DESCRIPTION
				X	EXP. RELEASE



- HOLES -
- A - 2" DIA 1 REQ
 - B - 11/64 DIA 4 REQ
 - C - 1/8 DIA 5 REQ
 - D - 15/64 DIA 1 REQ
 - E - 7/16 DIA 1 REQ

REQ'D	ITEM	PART NUMBER	DESCRIPTION	SYM.
			LIST OF MATERIAL	

THE TECHNICAL MATERIEL CORP.
MAMARONECK, NEW YORK

BRACKET, MTG. SW.

FINAL APPROVAL	DATE	1-14-76
MECH. DES.	DATE	
ELECT. DES.	DATE	
CHECKED	DATE	
DRAWN	DATE	1-14-76

DECIMALS	FRACTIONS
X ± .05	1/64
.XX ± .01	ANGLES
.XXX ± .005	0° - 30'

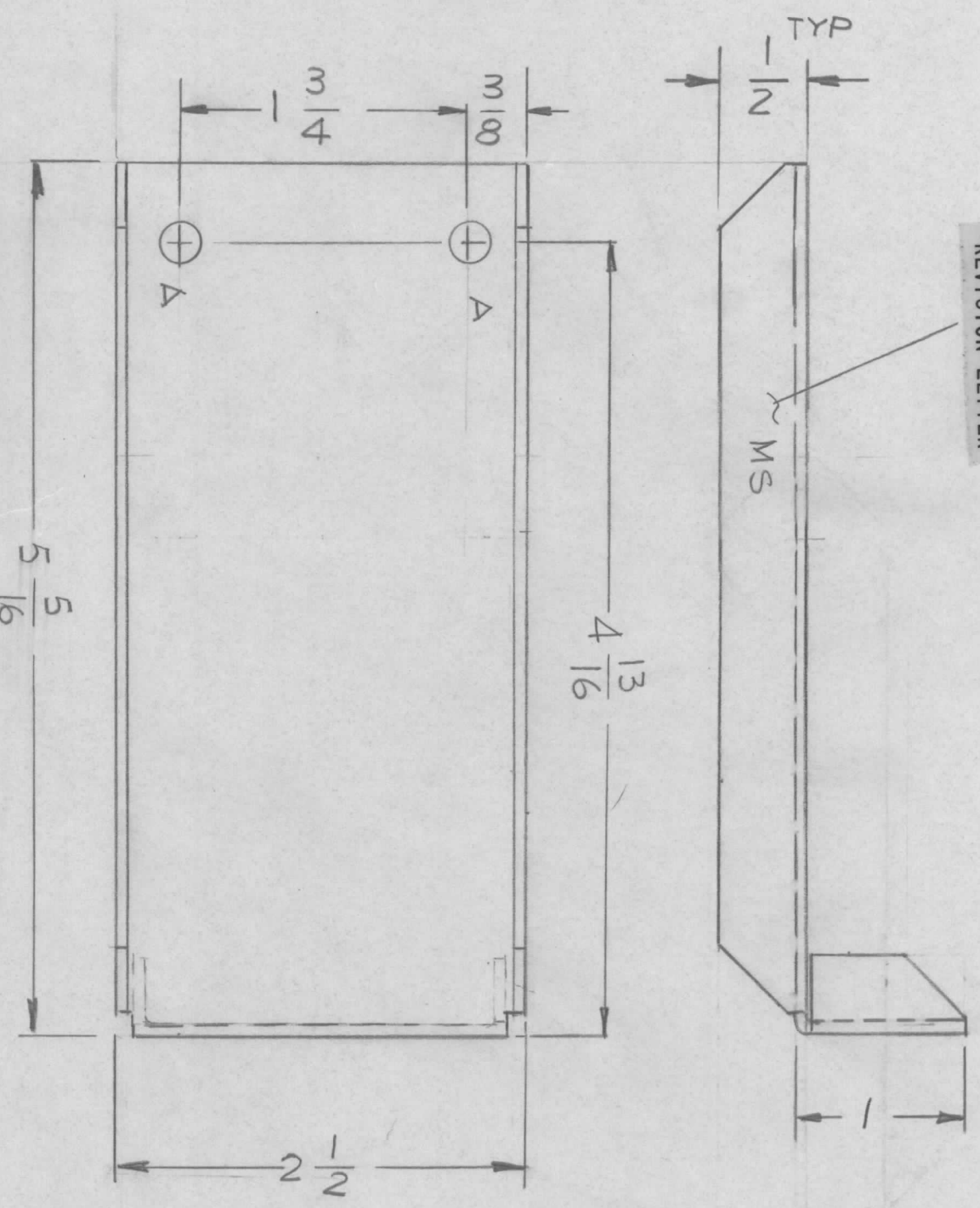
QTY / UNIT	MODEL USED ON	ASSY NO.
	HELM-10K/1	A3
APPLICATION		
CODE		

UNLESS OTHERWISE SPECIFIED:
 1. USE MATERIAL THICKNESS FOR MAXIMUM RADIUS ON ALL BENDS.
 2. ALL ANGULAR BENDS 90 DEGREES.
 3. REMOVE ALL BURRS AND SHARP EDGES.

MARK TMC PART NUMBER
 1/8 HIGH GOTHIC WITH LATEST
 REVISION LETTER

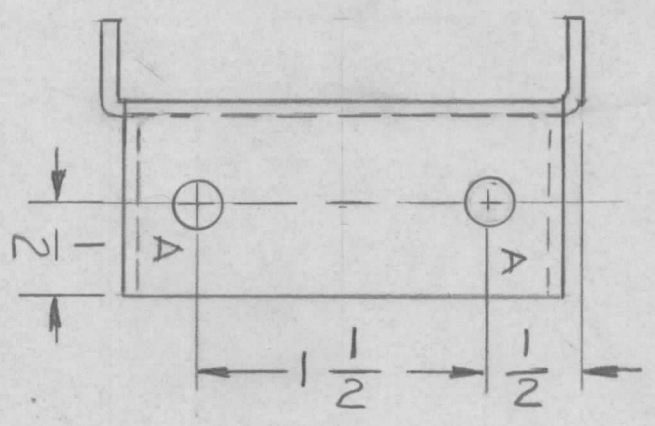
NOTICE TO PERSONS RECEIVING THIS DRAWING
 THE TECHNICAL MATERIEL CORPORATION claims proprietary right in the material disclosed hereon. This drawing is issued in confidence for engineering information only and may not be reproduced or used to manufacture anything shown hereon without permission from THE TECHNICAL MATERIEL CORPORATION to the user. This drawing is loaned for mutual assistance and is subject to recall at any time.

MARK TMC PART NUMBER
1/8 HIGH GOTHIC WITH LATEST
REVISION LETTER



- UNLESS OTHERWISE SPECIFIED:
1. USE MATERIAL THICKNESS FOR MAXIMUM RADIUS ON ALL BENDS.
 2. ALL ANGULAR BENDS 90 DEGREES.
 3. REMOVE ALL BURRS AND SHARP EDGES.
 4. ~~REMOVE ALL BURRS AND SHARP EDGES.~~

REVISIONS				DATE	APPROVED
EM.N. NO.	DRAFT	CHKD	ZONE	LTR	DESCRIPTION
				X	EXP. RELEASE
				Ø	



HOLES -
A - 13/64 DIA 4REQ.

QTY / UNIT	MODEL USED ON	ASS'Y NO.
1	#FLM- 10K/1	
APPLICATION		
CODE		

NOTICE TO PERSONS RECEIVING THIS DRAWING
THE TECHNICAL MATERIEL CORPORATION claims proprietary right in the material disclosed hereon. This drawing is issued in confidence for engineering information only and may not be reproduced or used to manufacture anything shown hereon without permission from THE TECHNICAL MATERIEL CORPORATION to the user. This drawing is loaned for mutual assistance and is subject to recall at any time.

DECIMALS	TOLS.	FRACTIONS	ANGLES
X ± .05		1/64	0° - 30'
.XX ± .01			
.XXX ± .005			

UNLESS OTHERWISE SPECIFIED
DIMENSIONS ARE IN INCHES
AND INCLUDE CHEMICALLY APPLIED
OR PLATED FINISHES

MATERIAL .081
ALY 5052-H32
FINISH S404
YEL IRIDITE

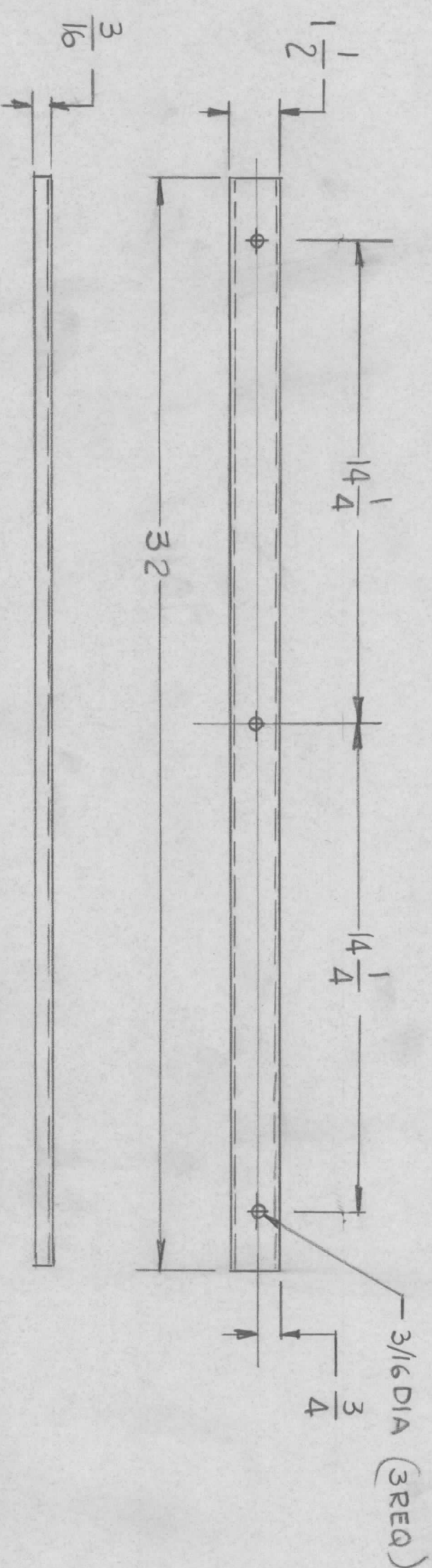
REQ'D ITEM	PART NUMBER	DESCRIPTION	SYM.
LIST OF MATERIAL			

THE TECHNICAL MATERIEL CORP.
MAMARONECK, NEW YORK

BRACKET, MTG

FINAL APPROV. <i>[Signature]</i>	DATE 3-12-76	SIZE B	CODE IDENT. NO. 82679	DWG NO. MS6686	ISSUE <i>[Signature]</i>
MECH. DES.	DATE	SCALE 1:1			
ELECT. DES.	DATE				
CHECKED	DATE				
DRAWN G.D.L.	DATE 3-6-76				

REVISIONS							
EM.N. NO.	DRAFT	CHKD	ZONE	LTR	DESCRIPTION	DATE	APPROVED
				X	EXP. RELEASE		
						8/76	



FINISH NOTES:

- S404 YEL IRIDITE
- S114 ZINC CHROMATE PRIMER
- S520 BLUE GRAY TEXTURATED VINYL

UNLESS OTHERWISE SPECIFIED:

1. USE MATERIAL THICKNESS FOR MAXIMUM RADIUS ON ALL BENDS.
2. ALL ANGULAR BENDS 90 DEGREES.
3. REMOVE ALL BURRS AND SHARP EDGES.

QTY / UNIT	1	MODEL USED ON	HELM-10K/1	ASS'Y NO.	
APPLICATION		CODE			

NOTICE TO PERSONS RECEIVING THIS DRAWING
 THE TECHNICAL MATERIEL CORPORATION claims proprietary right in the material disclosed hereon. This drawing is issued in confidence for engineering information only and may not be reproduced or used to manufacture anything shown hereon without permission from THE TECHNICAL MATERIEL CORPORATION to the user. This drawing is loaned for mutual assistance and is subject to recall at any time.

DECIMALS	X ± .05	TOLS.	FRACTIONS	1/64
	.XX ± .01		ANGLES	0° - 30'
	.XXX ± .005			

UNLESS OTHERWISE SPECIFIED DIMENSIONS ARE IN INCHES AND INCLUDE CHEMICALLY APPLIED OR PLATED FINISHES	FINAL APPROVAL	MECH. DES.	DATE
	<i>[Signature]</i>		8-12-76
	ELECT. DES.	DATE	
	CHECKED	DATE	
	DRAWN	DATE	3-8-74

MATERIAL	.064 THK
ALUM	5052-H32
FINISH	SEE NOTES

REQ'D	ITEM	PART NUMBER	DESCRIPTION	SYM.
-------	------	-------------	-------------	------

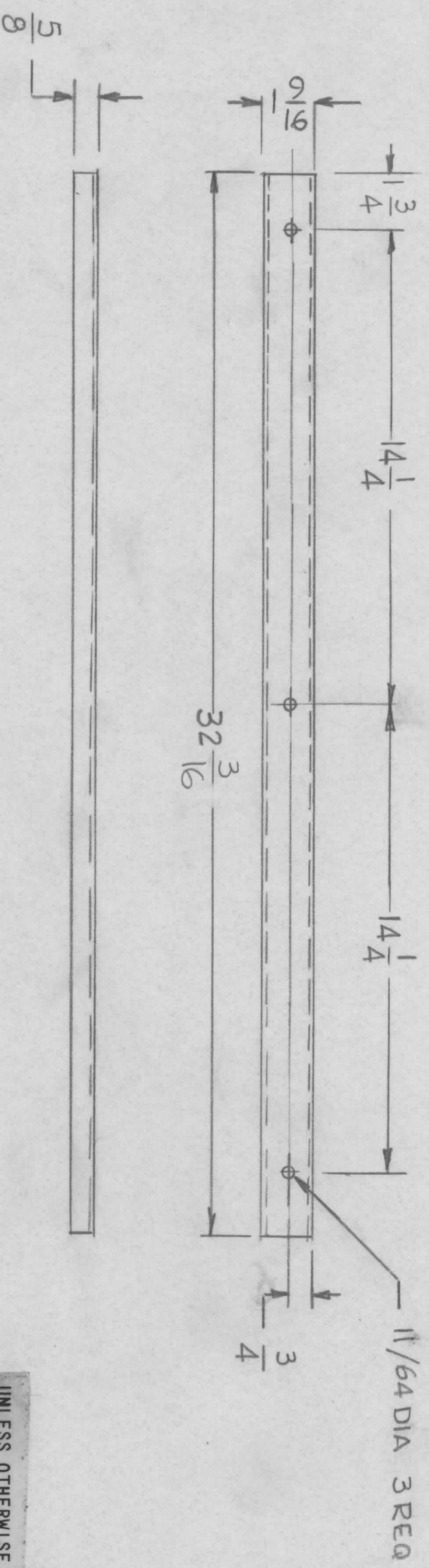
LIST OF MATERIAL

THE TECHNICAL MATERIEL CORP.
 MAMARONECK, NEW YORK

SIZE	B	CODE IDENT. NO.	82679	DWG NO.	MS 6696	ISSUE	Ø
SCALE	1/4	SHEET		OF			

TRIM STRIP PANEL WINDOW

REVISIONS							
EM.N. NO.	DRAFT	CHKD	ZONE	LTR	DESCRIPTION	DATE	APPROVED
	GDL				EXP. RELEASE	5-14-76	
					32 3/16 DIM. WAS 32"		
					ORIGINAL RELEASE	1-10-77	



FINISH NOTES:
 5404 VEL IRIDITE
 S114 ZINC CHROMATE PRIMER
 S520 BLUE GRAY TEXTURED
 VINYL

UNLESS OTHERWISE SPECIFIED:
 1. USE MATERIAL THICKNESS FOR MAXIMUM RADIUS ON ALL BENDS.
 2. ALL ANGULAR BENDS 90 DEGREES.
 3. REMOVE ALL BURRS AND SHARP EDGES.

REQ'D	ITEM	PART NUMBER	DESCRIPTION	SYM.
			LIST OF MATERIAL	

FINAL APPROVAL		DATE
MECH. DES.	<i>GDL</i>	11/5/75
ELECT. DES.		
CHECKED		
DRAWN	G.D.L.	3-8-76

SIZE	CODE IDENT. NO.	DWG NO.	ISSUE
B	82679	MS 6697	Ø
SCALE	1/2	SHEET	OF

QTY / UNIT	1	MODEL USED ON	HFLM-10K/1	ASS'Y NO.	
APPLICATION					
CODE					

NOTICE TO PERSONS RECEIVING THIS DRAWING
 THE TECHNICAL MATERIEL CORPORATION claims proprietary right in the material disclosed hereon. This drawing is issued in confidence for engineering information only and may not be reproduced or used to manufacture anything shown hereon without permission from THE TECHNICAL MATERIEL CORPORATION to the user. This drawing is loaned for mutual assistance and is subject to recall at any time.