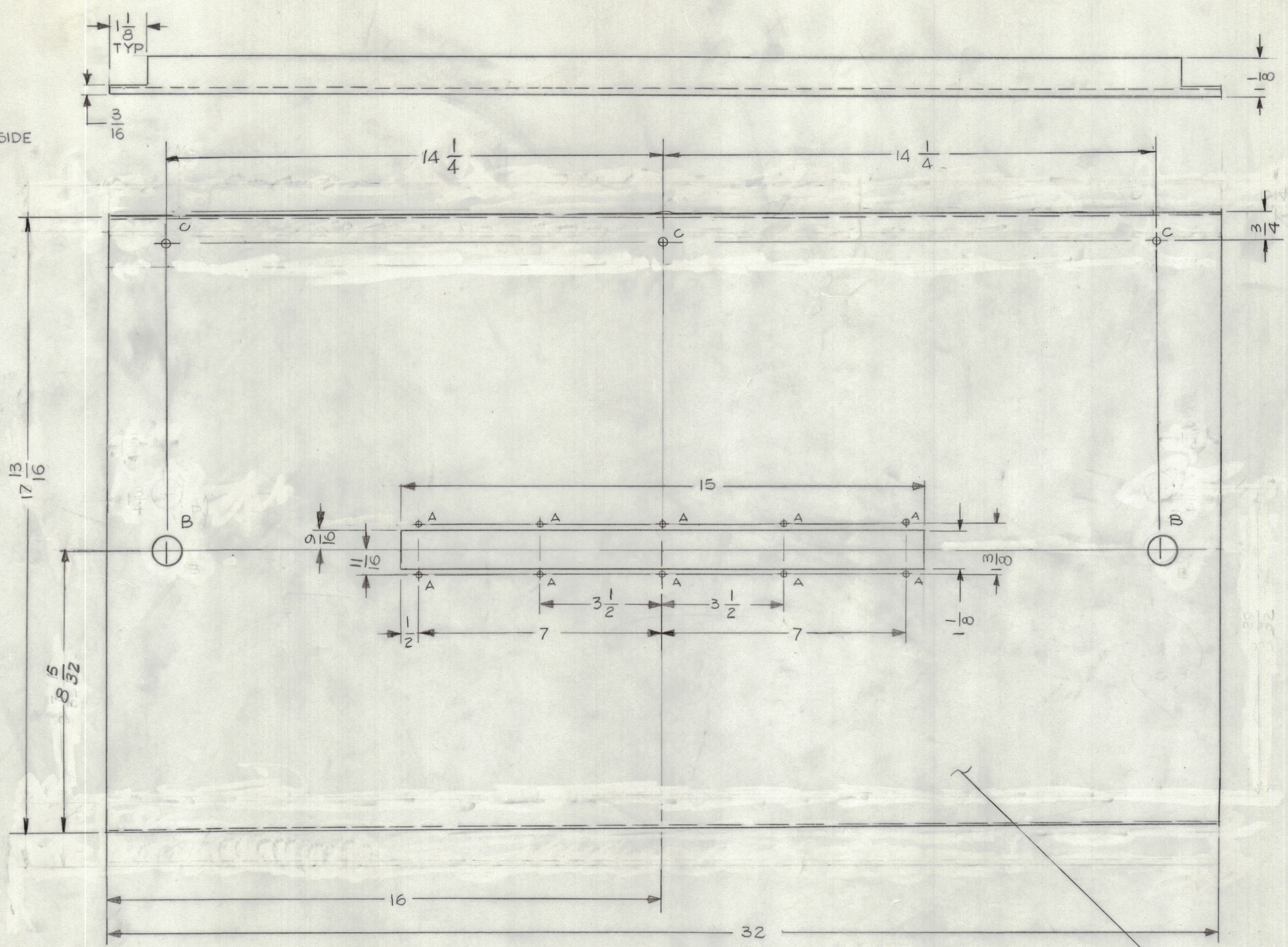


REVISIONS							
E.M.N.O.	DRAFT	CHKD	ZONE	LTR	DESCRIPTION	DATE	APPROVED
				X	EXP. RELEASE	9-16	

NOTE:
BEND PANEL BEFORE MACHINING.

OPPOSITE SIDE
IDENTICAL



HOLES -
A - 9/64 DIA 10 REQ
B - 7/8 DIA 2 REQ
C - 11/64 3 REQ

UNLESS OTHERWISE SPECIFIED:
1. USE MATERIAL THICKNESS FOR MAXIMUM RADIUS ON ALL BENDS.
2. ALL ANGULAR BENDS 90 DEGREES.
3. REMOVE ALL BURRS AND SHARP EDGES.

FINISH NOTES:
1. S404 - IRIDITE 14-2 AL-COAT.
2. S114 - ZINC CHROMATE PRIMER } FRONT AND
3. S115 - SMOOTH GRAY ENAMEL } EDGES ONLY
OR
PRIME AND PAINT PER CUSTOMER'S SPECIFICATIONS

MARK TMC PART NO. 1/8 HIGH
GOTHIC WITH LATEST REV
LETTER ON REAR OF PANEL

QTY / UNIT	HELM -10K/1	ASS'Y NO.
APPLICATION		
CODE		
<small>NOTICE TO PERSONS RECEIVING THIS DRAWING</small> <small>THE TECHNICAL MATERIEL CORPORATION claims proprietary right in the material disclosed hereon. This drawing is issued in confidence for engineering information only and may not be reproduced or used to manufacture anything shown hereon without permission from THE TECHNICAL MATERIEL CORPORATION to the user. This drawing is loaned for mutual assistance and is subject to recall at any time.</small>		

UNLESS OTHERWISE SPECIFIED DIMENSIONS ARE IN INCHES AND INCLUDE CHEMICALLY APPLIED OR PLATED FINISHES		FINAL APPROVAL <i>G.D.L.</i>	DATE 8-12-76
MECH. DES.		DATE	
ELECT. DES.		DATE	
CHECKED		DATE	
DRAWN G.D.L.		DATE 1-15-76	
TOLERANCES ON DECIMALS .X ± .05 .XX ± .01 .XXX ± .005		FRACTIONS ± 1/64 ANGLES ± 0° -30'	
MATERIAL 1/8 THK ALUM 5052-H32		FINISH SEE NOTE	

QTY. REQ.	ITEM	PART NO.	DESCRIPTION	SYMBOL
LIST OF MATERIAL				
THE TECHNICAL MATERIEL CORP. MAMARONECK, NEW YORK				
PANEL, WINDOW				
SIZE	CODE	IDENT NO.	DWG NO.	ISSUE
D	82679	MS 6680		1
SCALE 1/2				SHEET OF

MS 6680