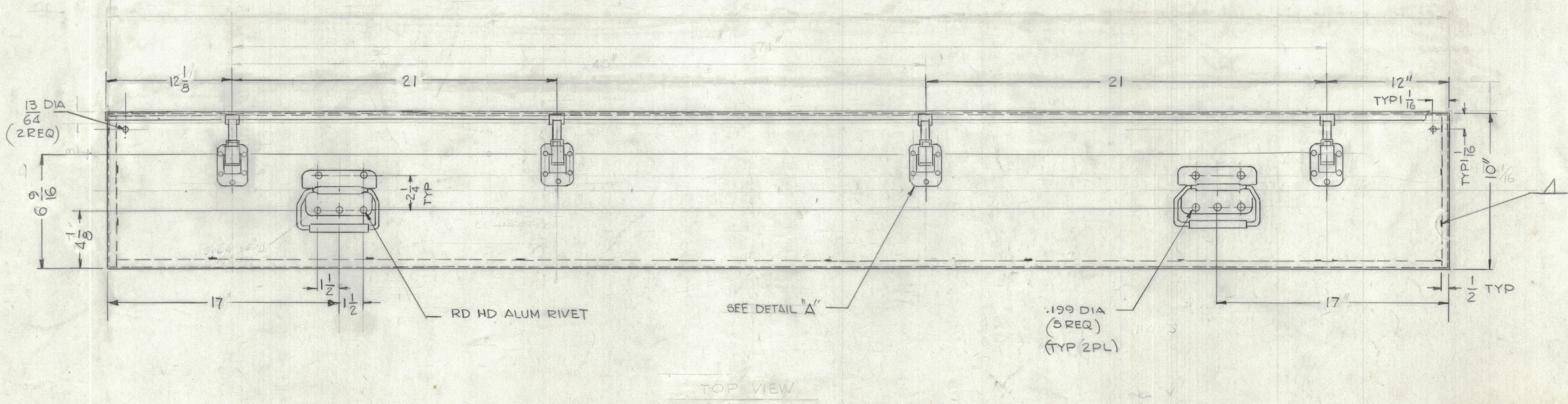
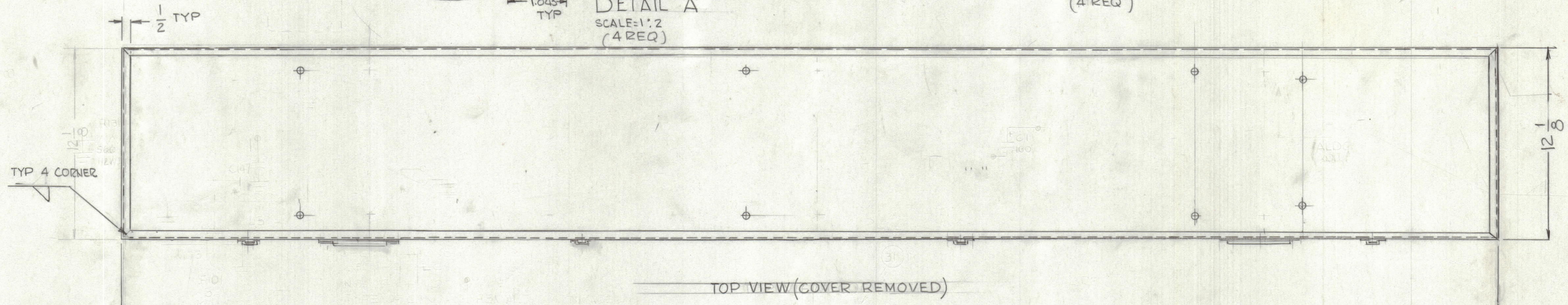
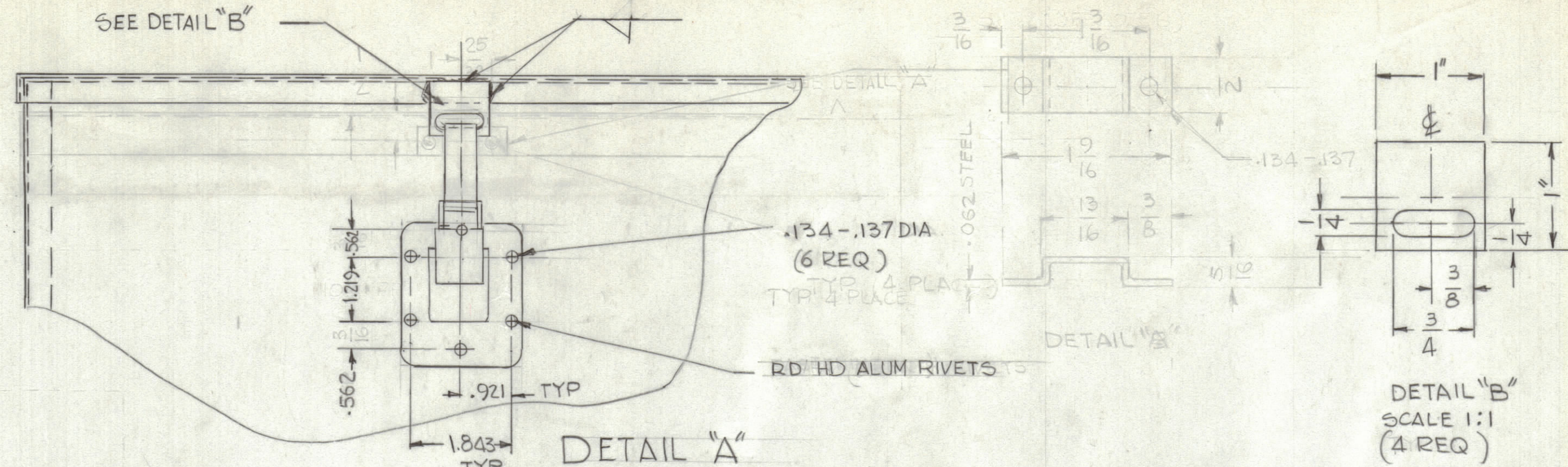


| ZONE |  | SYM |  | REVISIONS        |  | DATE    | E.M.N. NO. | DRAFT | CHKD | APPD |
|------|--|-----|--|------------------|--|---------|------------|-------|------|------|
|      |  |     |  | ORIGINAL RELEASE |  | 1-10-77 |            |       |      |      |



NOTES

|   |               |           |
|---|---------------|-----------|
| QTY/UNIT  | MODEL USED ON | ASSY. NO. |
| SCALE 1:4   | CODE          |           |
| THE CONTENTS OF THIS DRAWING ARE THE EXCLUSIVE PROPERTY OF THE TECHNICAL MATERIEL CORP. ITS UNAUTHORIZED USE OR REPRODUCTION IN WHOLE OR IN PART IS STRICTLY FORBIDDEN. |               |           |

| REQ'D.  | ITEM       | PART NUMBER  | DESCRIPTION         | SYMBOL                            |
|---|------------|--|---------------------|-----------------------------------|
| LIST OF MATERIAL  |            |  |                     |                                   |
| MATERIAL  |            | THE TECHNICAL MATERIEL CORP.<br>MAMARONECK, NEW YORK |                     |                                   |
| FINISH  |            | TITLE<br>ANTENNA CASE MACHINING                      |                     |                                   |
| UNLESS OTHERWISE SPECIFIED DIMENSIONS ARE IN INCHES AND INCLUDE CHEMICALLY APPLIED OR PLATED FINISHES |            | DRAWN<br>G. DELUCA                                   | DATE<br>7-31-75     | FINAL APPROVAL<br>DATE<br>1/10/77 |
| DECIMALS<br>X2 ± .05<br>XX ± .01<br>XXX ± .005  | TOLERANCES | FRACTIONS<br>± 1/64<br>ANGLES<br>± 0° 30'            | ELECT. DES.<br>DATE | MECH. DES.<br>DATE                |
|   |            | MS6671   |                     | REV. LTR.                         |
|   |            | SHEET 2 OF 3   |                     |                                   |