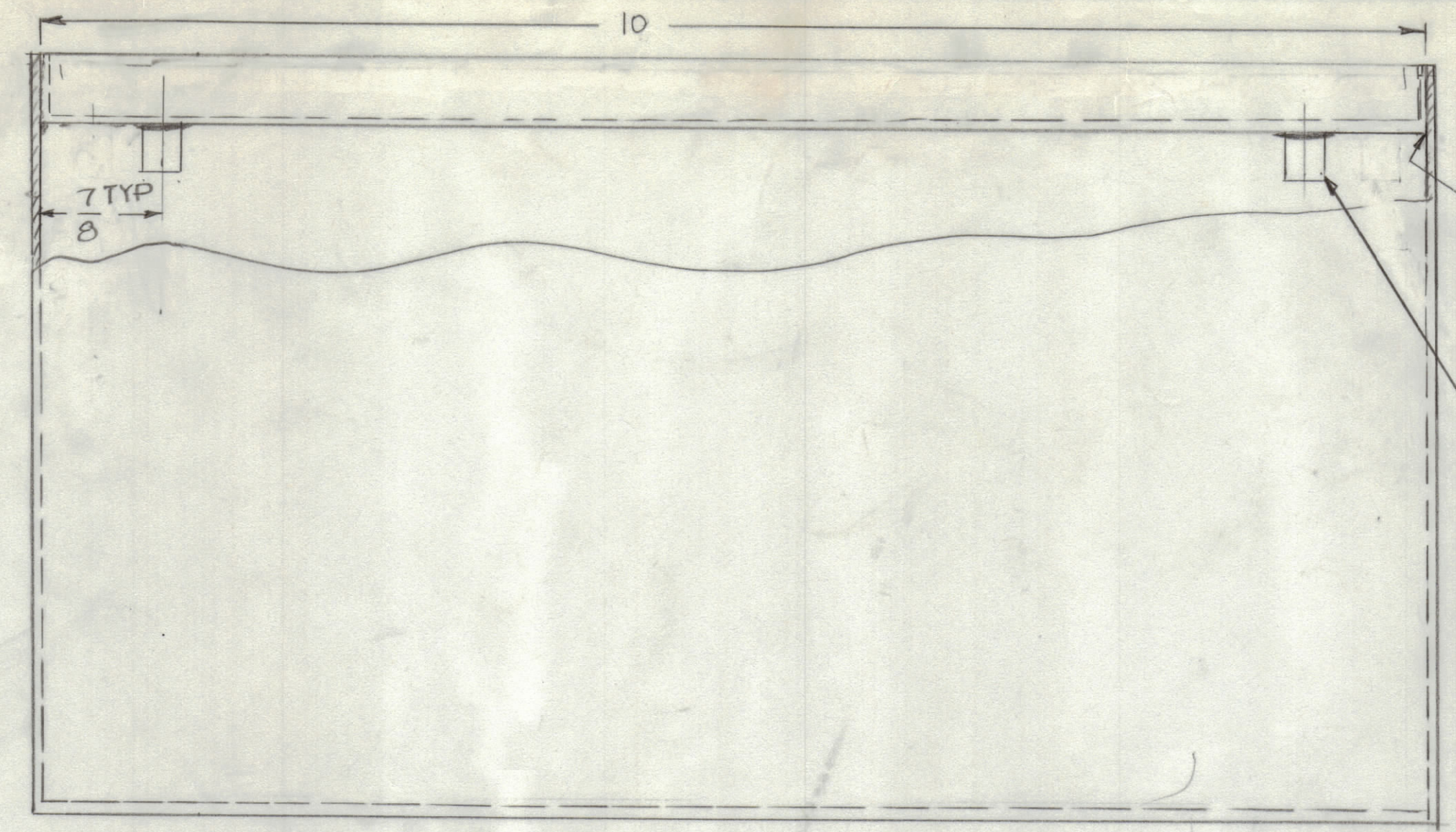
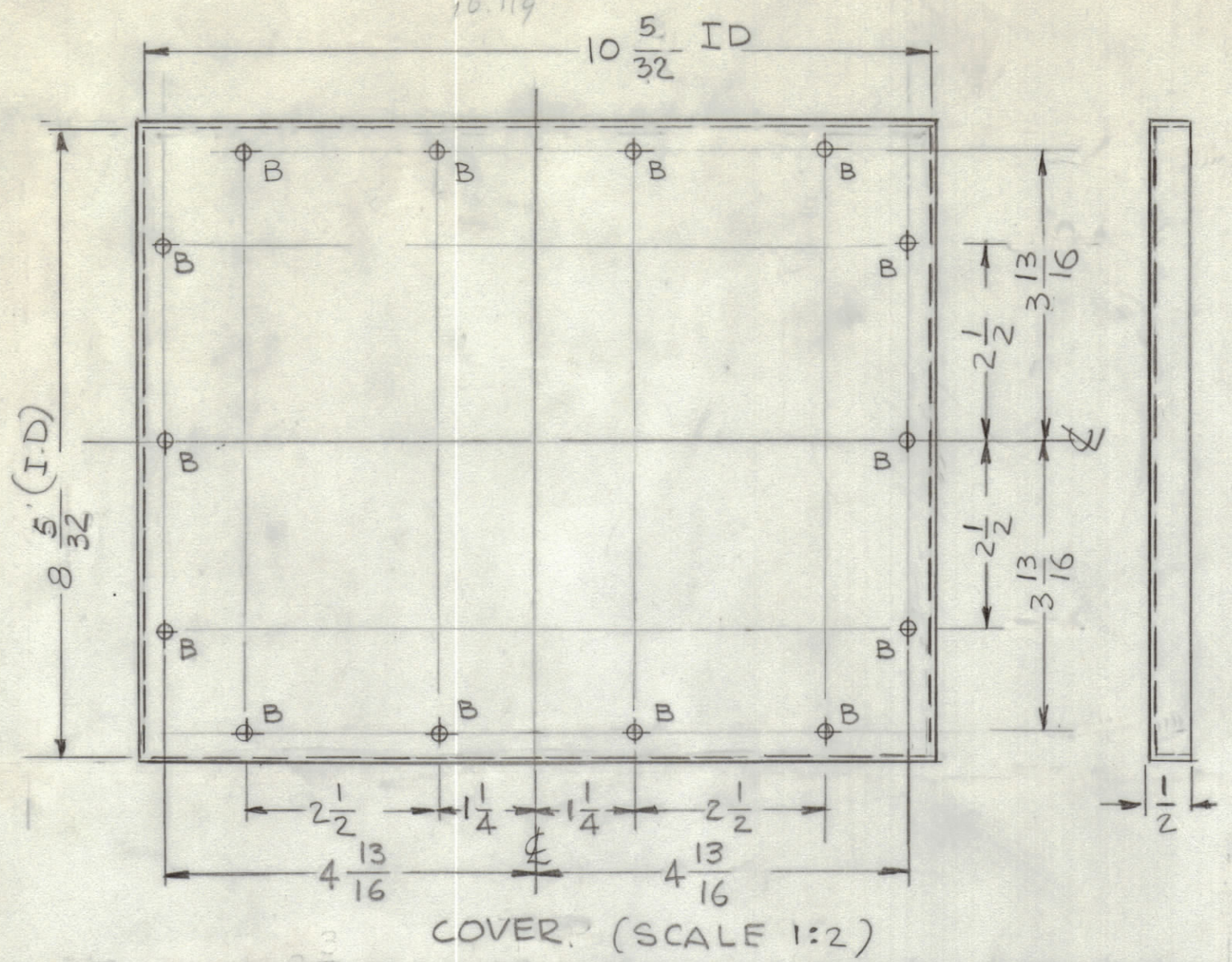
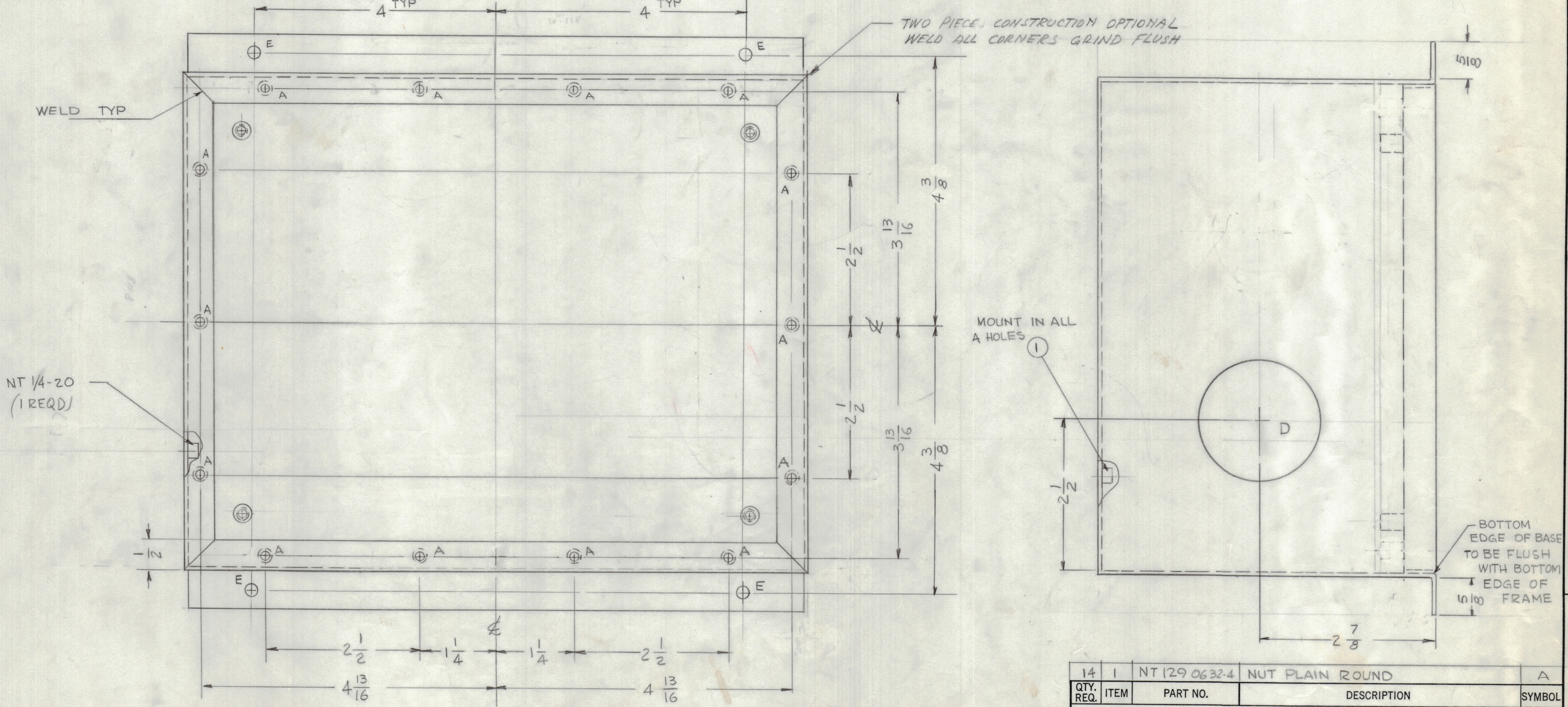
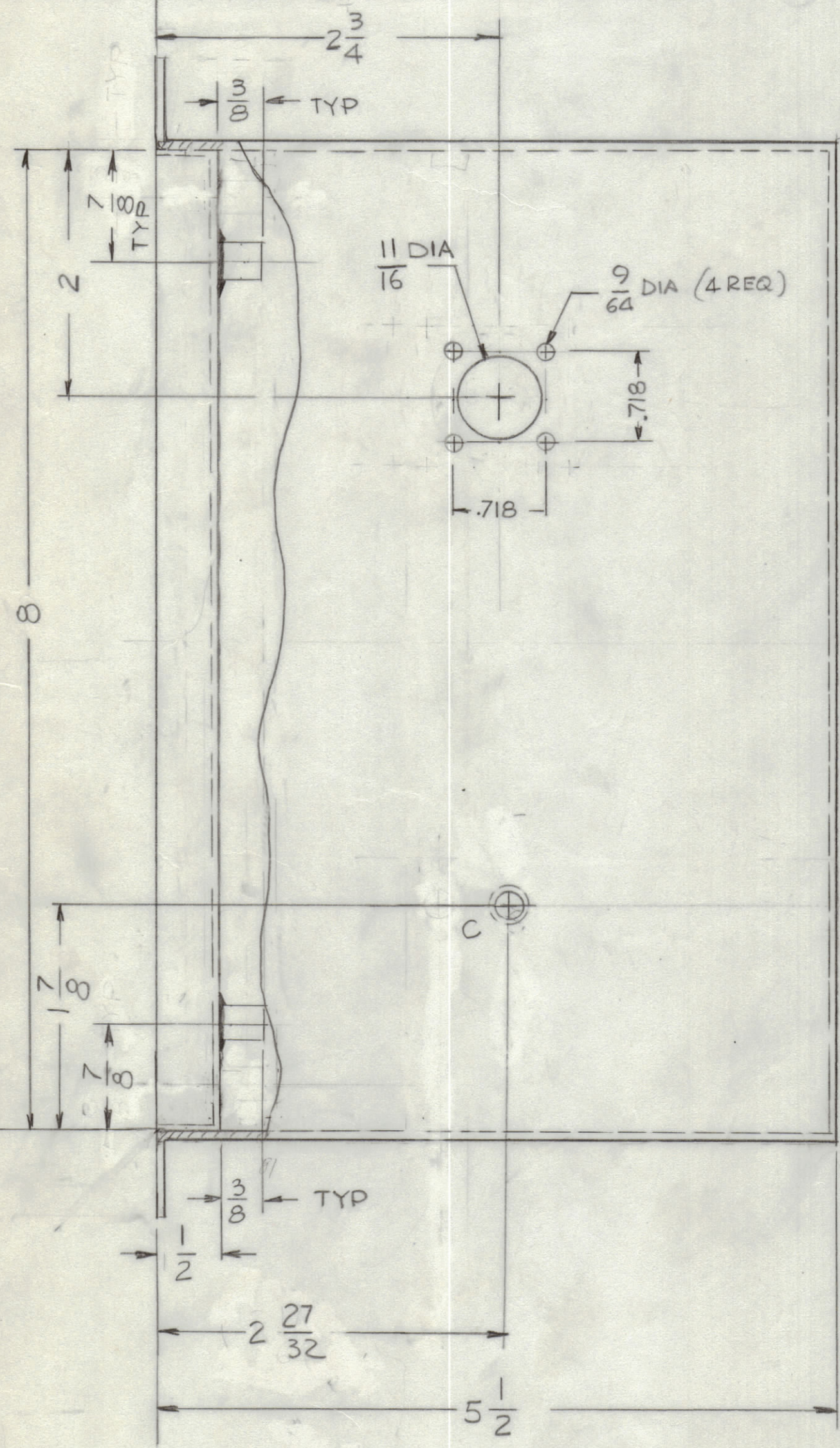


REVISIONS							
E.M.N.O.	DRAFT	CHKD	ZONE	LTR	DESCRIPTION	DATE	APPROVED
				X	EXP. RELEASE	2-26-75	
GDL		C.P.B.		XI	DIMS 7/8 WAS 3/8, 4" E" HOLES ADD	3-14-75	
					ORIGINAL RELEASE FOR PRODUCTION	4/1/75	



WELD TOP OF BASE
ALL AROUND TO SIDE
OF FRAME

6-32 WELD NUT
MTG AS SHOWN
4 REQ



NT 1/4-20
(1 REQ)

- HOLES
- A - .191 - .194 DIA 14 REQ'D
 - B - 11/64 DIA 14 REQ'D
 - C - FOR NT 1/4-20 DIA HOLE 1 REQ'D
 - D - 2" DIA 1 REQ'D
 - E - 15/64 DIA 4 REQ'D

QTY / UNIT	MODEL USED ON	ASS'Y NO.
1	ATU-1K	

NOTICE TO PERSONS RECEIVING THIS DRAWING
THE TECHNICAL MATERIEL CORPORATION claims proprietary right in the material disclosed herein. This drawing is issued in confidence for engineering information only and may not be reproduced or used to manufacture anything shown hereon without permission from THE TECHNICAL MATERIEL CORPORATION to the user. This drawing is loaned for mutual assistance and is subject to recall at any time.

TOLERANCES ON	
DECIMALS	FRACTIONS
.X ± .05	± 1/64
.XX ± .01	ANGLES
.XXX ± .005	± 0° - 30'

QTY. REQ.	ITEM	PART NO.	DESCRIPTION	SYMBOL
14	1	NT 129 0632-4	NUT PLAIN ROUND	A

LIST OF MATERIAL			
THE TECHNICAL MATERIEL CORP. MAMARONECK, NEW YORK			
ANTENNA TUNER CASE ATU-1K			
SIZE	CODE IDENT NO.	DWG NO.	ISSUE
D	82679	MS 6609	Ø
SCALE	1:1	SHEET	OF