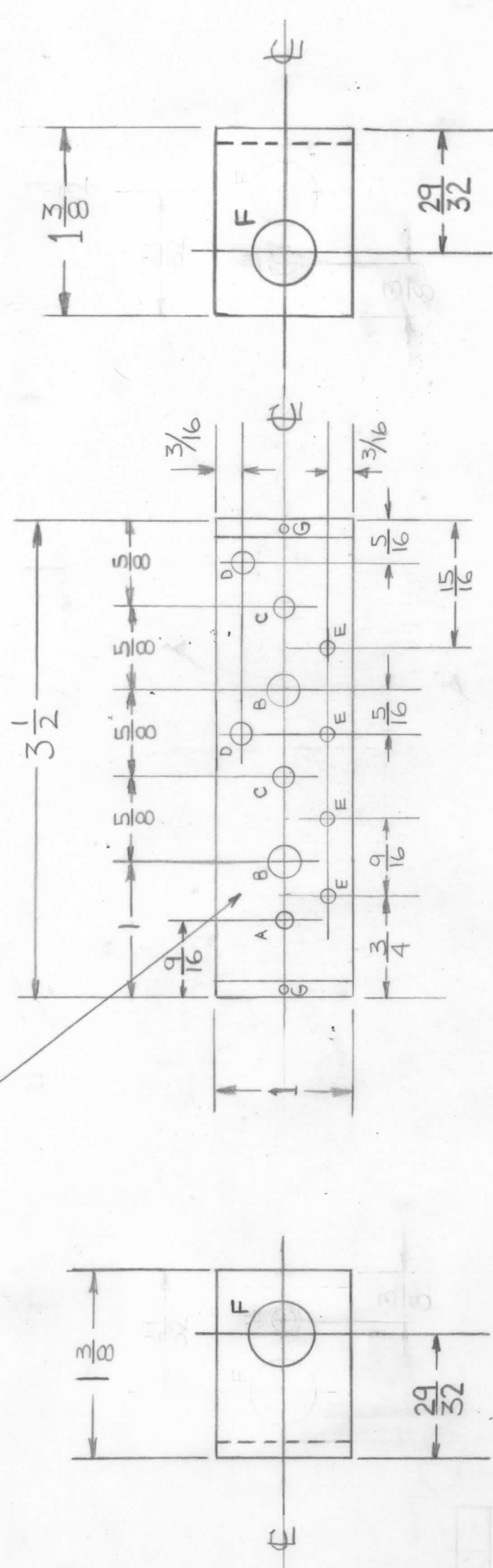


MARK TMC PART NUMBER
1/8 HIGH-GOTHIC WITH LATEST
REVISION LETTER

E.M.N. NO.	DRAFT	CHKD	ZONE	LTR	DESCRIPTION	DATE	APPROVED
				X	EXP. RELEASE	10-2-74	
				X1	MATERIAL WAS 5052-32 ALUM	2-13-75	
				X2	SIDE VIEWS CLARIFIED	2-28-75	
				Ø	ORIGINAL RELEASE FOR PRODUCTION	3/13/75	



UNLESS OTHERWISE SPECIFIED:

1. USE MATERIAL THICKNESS FOR MAXIMUM RADIUS ON ALL BENDS.
2. ALL ANGULAR BENDS 90 DEGREES.
3. REMOVE ALL BURRS AND SHARP EDGES.
4. MOUNT INSERTS AFTER FINISHING.

HOLES

A -	11/64	1REQ
B -	1/4	2REQ
C -	13/64	2REQ
D -	3/16	2REQ
E -	1/8	4REQ
F -	1/2	2REQ
G -	2/56 TAP	1/4 DEEP 6 REQ

REQ'D ITEM	PART NUMBER	DESCRIPTION	SYM.

LIST OF MATERIAL

THE TECHNICAL MATERIEL CORP. MAMARONECK, NEW YORK		DATE	3/13/75
MECH. DES.	F. IANNUZZI	DATE	2-7-75
ELECT. DES.		DATE	
CHECKED	F. IANNUZZI	DATE	12-14-74
DRAWN	F. IANNUZZI	DATE	6/19/74
SIZE	B	CODE IDENT. NO.	MS 6570
SCALE	1:1	DWG NO.	
		ISSUE	Ø

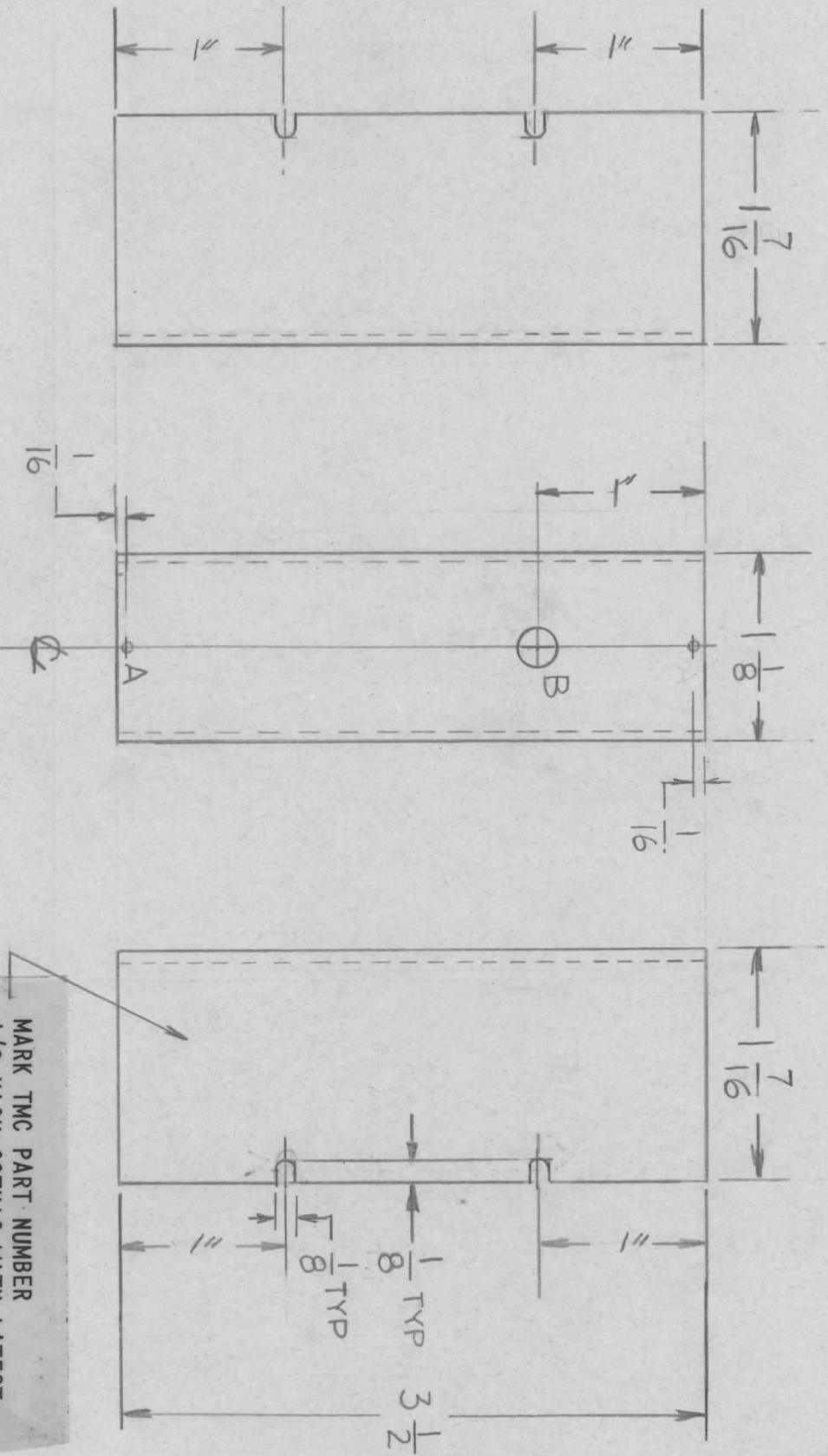
OUTPUT COUPLER MTG.
PLATE

UNLESS OTHERWISE SPECIFIED DIMENSIONS ARE IN INCHES AND INCLUDE CHEMICALLY APPLIED OR PLATED FINISHES	FRACTIONS	1/64
DECIMALS	TOLS.	0° .30'
.X ± .05	ANGLES	
.XX ± .01		
.XXX ± .005		
MATERIAL	VB ALUM	
	EXTRUS. 6063-T5	
FINISH	S404	
	YEL IRIDITE	

QTY / UNIT	1	MODEL USED ON	A5611	ASSY NO.	
APPLICATION					
CODE					

NOTICE TO PERSONS RECEIVING THIS DRAWING
THE TECHNICAL MATERIEL CORPORATION claims proprietary right in the material disclosed hereon. This drawing is issued in confidence for engineering information only and may not be reproduced or used to manufacture anything shown hereon without permission from THE TECHNICAL MATERIEL CORPORATION to the user. This drawing is loaned for mutual assistance and is subject to recall at any time.

REVISIONS				DATE	APPROVED
EM.N. NO.	DRAFT	CHKD	ZONE	LTR	DESCRIPTION
				X	EXP. RELEASE
				X1	1 7/16 WAS 1 3/8
				Ø	ORIGINAL RELEASE FOR PRODUCTION
					3-13-75



HOLE
 A = 7/64 2REQ
 B = 1/4 DIA 1REQ

MARK TMC PART NUMBER
 1/8 HIGH GOTHIC WITH LATEST
 REVISION LETTER

- UNLESS OTHERWISE SPECIFIED:
1. USE MATERIAL THICKNESS FOR MAXIMUM RADIUS ON ALL BENDS.
 2. ALL ANGULAR BENDS 90 DEGREES.
 3. REMOVE ALL BURRS AND SHARP EDGES.

QTY / UNIT	1	MODEL USED ON	A5611	ASS'Y NO.	A5611
APPLICATION		CODE			

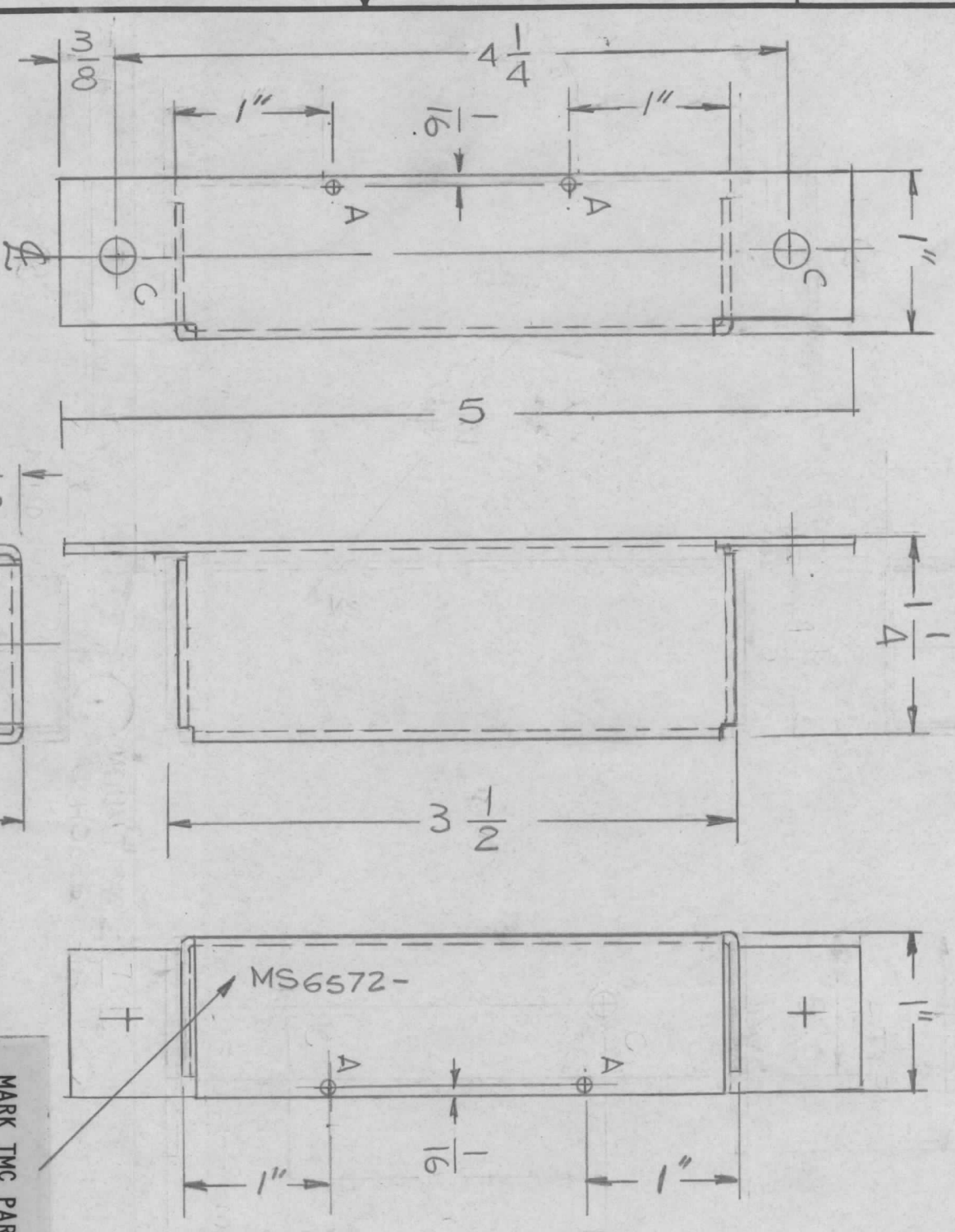
DECIMALS	X ± .05	TOLS.	FRACTIONS	1/64
	.XX ± .01		ANGLES	0° .30'
	.XXX ± .005			
MATERIAL	.064 THK			
FINISH	ALTAIY 5052-H32			
FINISH	S404			
	YEL IRIDITE			

FINAL APPROVAL	DATE
MECH. DES.	DATE
ELECT. DES.	DATE
CHECKED	DATE
DRAWN	DATE

REQ'D ITEM	PART NUMBER	DESCRIPTION	SYM.
LIST OF MATERIAL			
THE TECHNICAL MATERIEL CORP.			
MAMARONECK, NEW YORK			
COVER (TOP)			
OUTPUT COUPLER			
SIZE	CODE IDENT. NO.	DWG NO.	ISSUE
B	82679	MS 6571	Ø
SCALE	1:1	SHEET	OF

NOTICE TO PERSONS RECEIVING THIS DRAWING
 THE TECHNICAL MATERIEL CORPORATION claims proprietary right in the material disclosed hereon. This drawing is issued in confidence for engineering information only and may not be reproduced or used to manufacture anything shown hereon without permission from THE TECHNICAL MATERIEL CORPORATION to the user. This drawing is loaned for mutual assistance and is subject to recall at any time.

REVISIONS							
E.M.N. NO.	DRAFT	CHKD	ZONE	LTR	DESCRIPTION	DATE	APPROVED
				X1	REDRAWN W/CHANGES	12-2-74	
	CL			Ø	ORIGINAL RELEASE FOR PRODUCTION	3-13-75	



MARK TMC PART NUMBER
1/8 HIGH GOTHIC WITH LATEST
REVISION LETTER

HOLE
A - .7/64 DIA 2 REQ.
B - 1/4 DIA 1 REQ.
C - 15/64 DIA 2 REQ

- UNLESS OTHERWISE SPECIFIED:
1. USE MATERIAL THICKNESS FOR MAXIMUM RADIUS ON ALL BENDS.
 2. ALL ANGULAR BENDS 90 DEGREES.
 3. REMOVE ALL BURRS AND SHARP EDGES.
 4. MOUNT INSERTS AFTER FINISHING.

QTY / UNIT	1	MODEL USED ON	A5611	ASS'Y NO.	
APPLICATION					
CODE					

NOTICE TO PERSONS RECEIVING THIS DRAWING
THE TECHNICAL MATERIEL CORPORATION claims proprietary right in the material disclosed hereon. This drawing is issued in confidence for engineering information only and may not be reproduced or used to manufacture anything shown hereon without permission from THE TECHNICAL MATERIEL CORPORATION to the user. This drawing is loaned for mutual assistance and is subject to recall at any time.

DECIMALS	X ± .05	TOLS.	FRACTIONS	1/64
	.XX ± .01		ANGLES	0°-30'
	.XXX ± .005			
MATERIAL .064 THK				
AL ALY 5052-H32				
FINISH SA04				
VEL IRIDITE				

REQ'D ITEM	PART NUMBER	DESCRIPTION	SYM.
LIST OF MATERIAL			
THE TECHNICAL MATERIEL CORP.			
MAMARONECK, NEW YORK			
BOTTOM COVER			
OUTPUT COUPLER			
SIZE	CODE IDENT. NO.	DWG NO.	ISSUE
B	82679	MS6572	Ø
SCALE	1:1	SHEET	OF

REVISIONS				DATE	APPROVED
EM.N. NO.	DRAFT	CHKD	ZONE	LTR	DESCRIPTION
				X	EXP. RELEASE
					ORIGINAL RELEASE FOR PRODUCTION
					3/4/75



1	HFTA-1KJ2	PAK 138-1
QTY / UNIT		MODEL USED ON
APPLICATION		ASS'Y NO.
CODE		

NOTICE TO PERSONS RECEIVING THIS DRAWING
 THE TECHNICAL MATERIEL CORPORATION claims proprietary right in the material disclosed hereon. This drawing is issued in confidence for engineering information only and may not be reproduced or used to manufacture anything shown hereon without permission from THE TECHNICAL MATERIEL CORPORATION to the user. This drawing is loaned for mutual assistance and is subject to recall at any time.

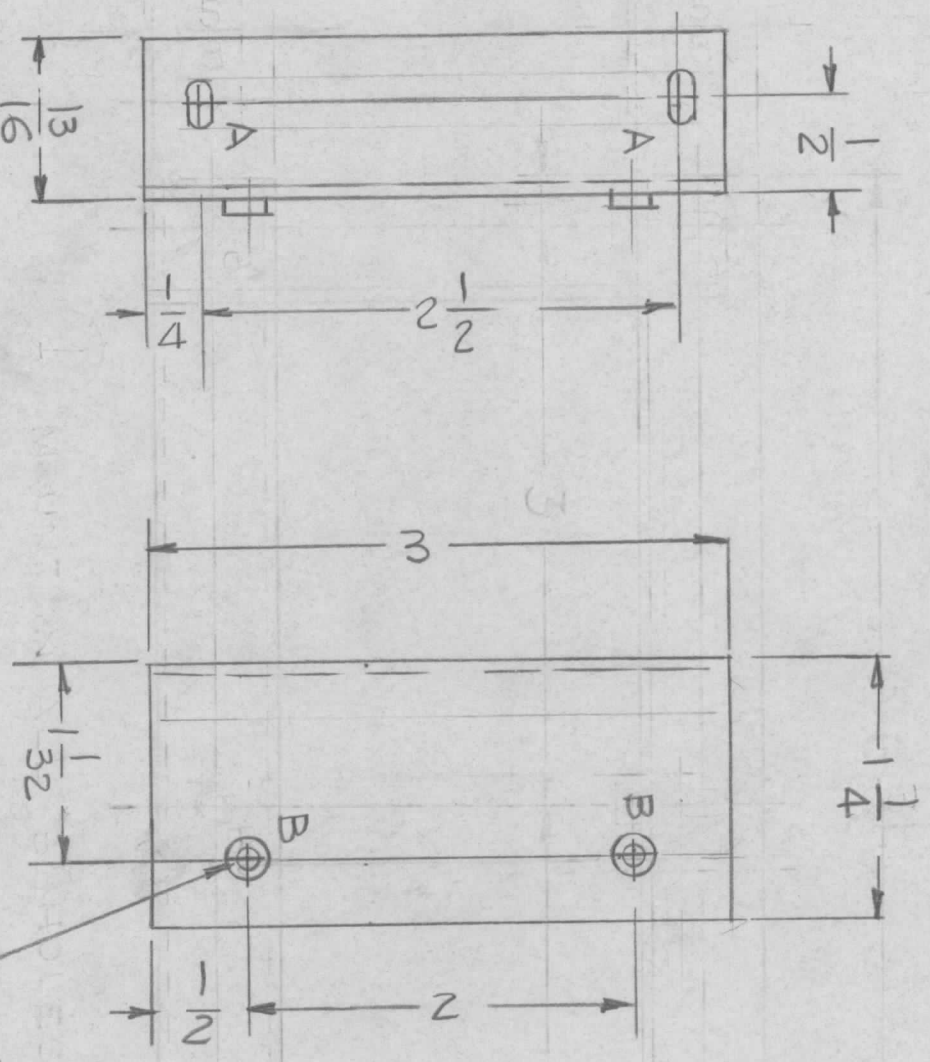
DECIMALS	FRACTIONS
.X ± .05	1/64
.XX ± .01	TOLS.
.XXX ± .005	ANGLES
	0° .30'
MATERIAL	.064 THK
FINISH	ALY 5052-H32
	S404
	YEL IRIDITE

REQ'D	ITEM	PART NUMBER	DESCRIPTION	SYM.
			LIST OF MATERIAL	

THE TECHNICAL MATERIEL CORP.
 MAMARONECK, NEW YORK
 COVER, DECOUPLING NETWORK

FINAL APPROVAL	DATE	10/23/74	
MECH. DES.	DATE		
ELECT. DES.	DATE		
CHECKED	DATE		
DRAWN	DATE	10-18-74	
G. De Lucia			
SIZE	CODE IDENT. NO.	DWG NO.	ISSUE
B	82679	MS 6578	
SCALE	1 : 1	SHEET	OF

REVISIONS							
E.M.N. NO.	DRAFT	CHKD	ZONE	LTR	DESCRIPTION	DATE	APPROVED
				X	EXP. RELEASE	2-19-75	
				XI	DIM 1/4 Was 1/8		
				Ø	ORIGINAL RELEASE FOR PRODUCTION	6/16/75	



- UNLESS OTHERWISE SPECIFIED:
1. USE MATERIAL THICKNESS FOR MAXIMUM RADIUS ON ALL BENDS.
 2. ALL ANGULAR BENDS 90 DEGREES.
 3. REMOVE ALL BURRS AND SHARP EDGES.
 4. MOUNT INSERTS AFTER FINISHING.

QTY / UNIT	2	MODEL USED ON	BMA-523	ASSY NO.	AX5189
APPLICATION					
CODE					

DECIMALS	X ± .05	TOLS.	FRACTIONS	1/64
	.XX ± .01		ANGLES	0° - 30'
	.XXX ± .005			
MATERIAL .064 ALM.				
5052 - H32				
FINISH S404				
VEL. IRIDITE				

REQ'D	2	ITEM	1	PART NUMBER	NT129-0632-	DESCRIPTION	NUT, PLAIN ROUND	SYM.	
-------	---	------	---	-------------	-------------	-------------	------------------	------	--

HOLES	DESCRIPTION	REQ'D
A	SLOT 1/8 x 1/4	2
B	.191 - .194	2

FINAL APPROVAL		DATE	1-13-75
MECH. DES. E. IANNUZZI		DATE	1-13-75
ELECT. DES.		DATE	
CHECKED		DATE	
DRAWN F. IANNUZZI		DATE	1-13-75
LIST OF MATERIAL			
THE TECHNICAL MATERIEL CORP.			
MAMARONECK, NEW YORK			
BRACKET, SUPPORT			
SIZE	CODE IDENT. NO.	DWG NO.	ISSUE
B	82679	MS6599	Ø
SCALE		SHEET	OF

NOTICE TO PERSONS RECEIVING THIS DRAWING
 THE TECHNICAL MATERIEL CORPORATION claims proprietary right in the material disclosed hereon. This drawing is issued in confidence for engineering information only and may not be reproduced or used to manufacture anything shown hereon without permission from THE TECHNICAL MATERIEL CORPORATION to the user. This drawing is loaned for mutual assistance and is subject to recall at any time.

CUT HERE GUARANTEED 4-66