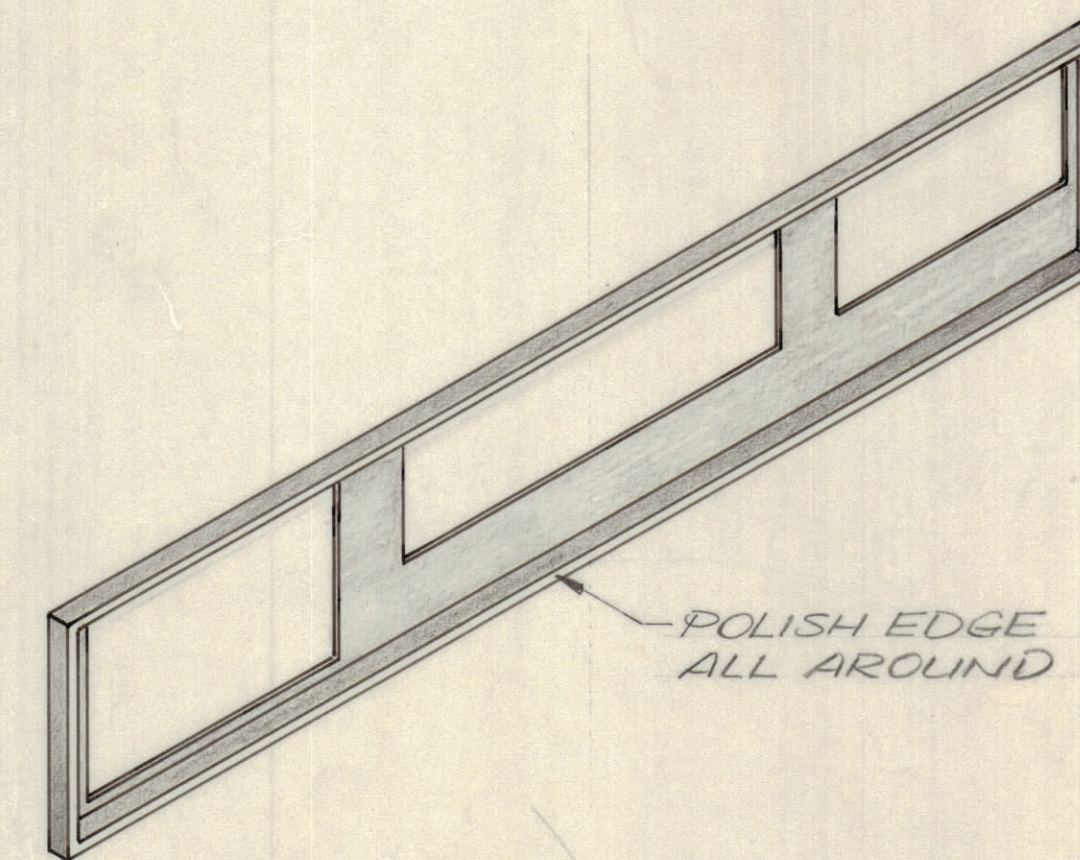
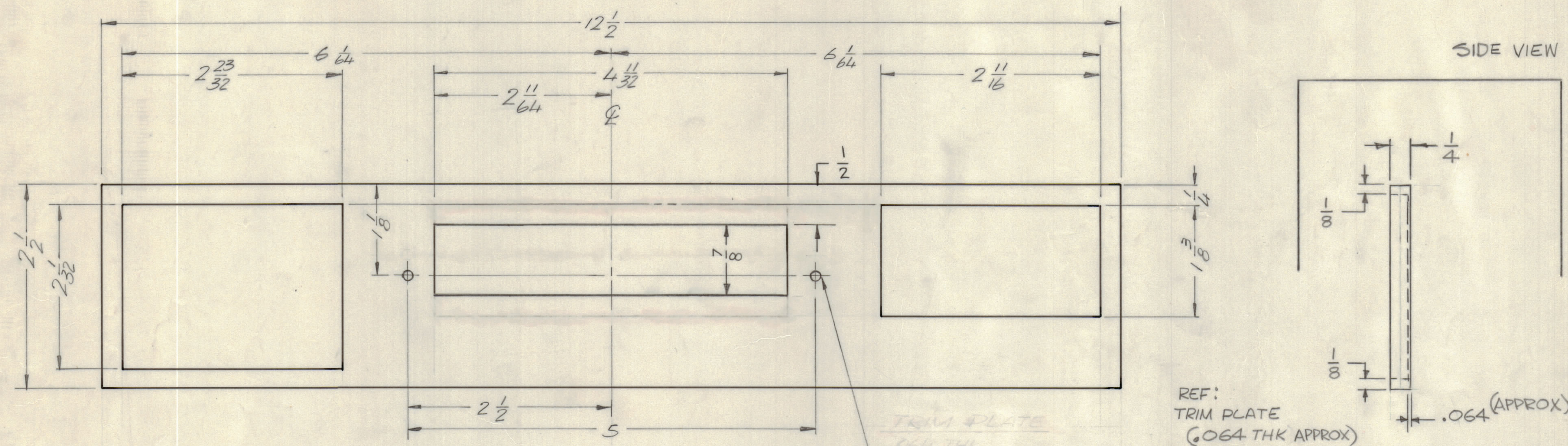


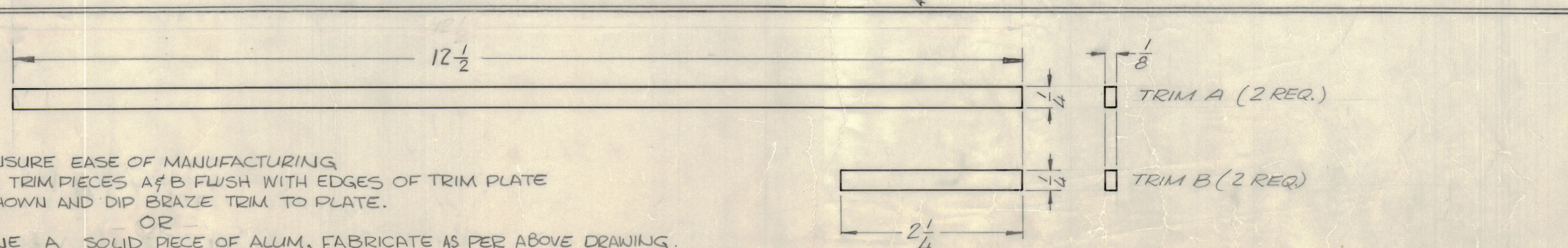
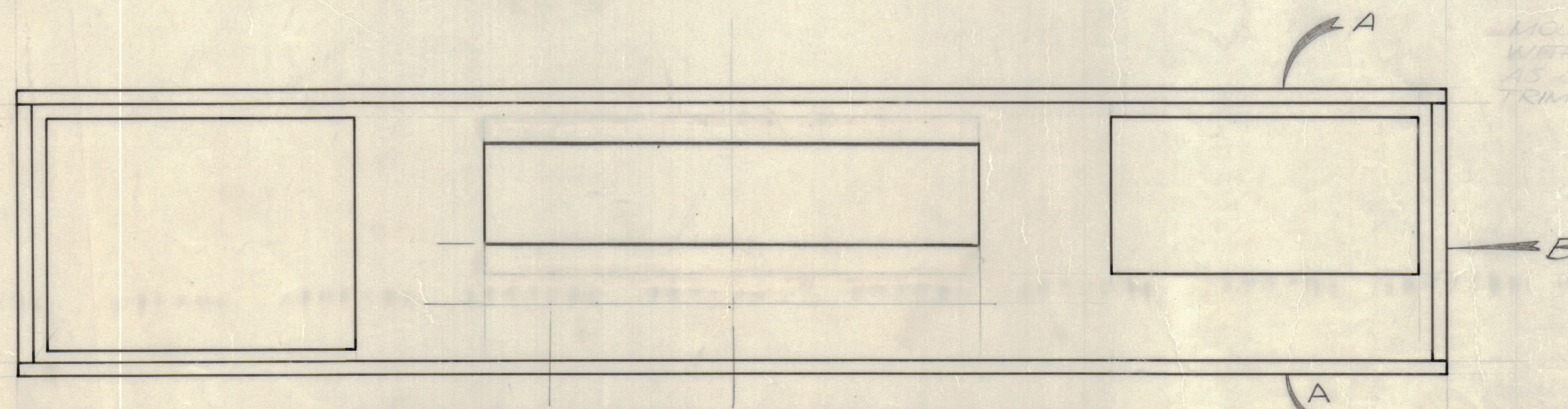
REVISIONS							
E.M.N.O.	DRAFT	CHKD	ZONE	LTR	DESCRIPTION	DATE	APPROVED
					WINDOW CUTOUT REVISED, 9/64 HOLES WERE STUDS	11-12	
					FABRICATION NOTE ADDED		
					ORIGINAL RELEASE FOR PRODUCTION	1-26-76	*



FINISH NOTE:
 PAINT ALL SIDES AND FACE OF ASSY. MAT OR FLAT (NO GLOSS) BLACK. REMOVE PAINT OR IRIDITE FROM EDGE SHOWN AND POLISH TO HIGH GLOSS NATURAL ALUMINUM.

REF: TRIM PLATE (.064 THK APPROX)

MOUNT TRIM PIECES A & B FLUSH WITH EDGES OF TRIM PLATE AS SHOWN AND DIP BRAZE TRIM TO PLATE.



NOTE:
 TO INSURE EASE OF MANUFACTURING
 1. MOUNT TRIM PIECES A & B FLUSH WITH EDGES OF TRIM PLATE AS SHOWN AND DIP BRAZE TRIM TO PLATE.
 OR
 MACHINE A SOLID PIECE OF ALUM, FABRICATE AS PER ABOVE DRAWING. FINISH AS PER REQUIRED SPECIFICATIONS (SEE FINISH NOTE)
 EITHER METHOD IS ACCEPTABLE

(LD3020)

QTY. REQ.	ITEM	PART NO.	DESCRIPTION	SYMBOL
	E. BUDETTI LIST OF MATERIAL			

UNLESS OTHERWISE SPECIFIED DIMENSIONS ARE IN INCHES AND INCLUDE CHEMICALLY APPLIED OR PLATED FINISHES

TOLERANCES ON
 DECIMALS .X ± .05
 .XX ± .01
 .XXX ± .005
 FRACTIONS ± 1/64
 ANGLES ± 0° - 30'

FINAL APPROVAL	DATE
MECH. DES.	DATE
ELECT. DES.	DATE
CHECKED	DATE
DRAWN	DATE

THE TECHNICAL MATERIEL CORP.
 MAMARONECK, NEW YORK

PLATE, ESCUTCHEON

1	GPR110	BMA514
QTY / UNIT	MODEL USED ON	ASS'Y NO.
APPLICATION		
CODE		

MATERIAL 6061-0 ALUM THICKNESS AS NOTED
 FINISH AS NOTED

SIZE	CODE	IDENT NO.	DWG NO.	ISSUE
D	82679		MS6509	1

NOTICE TO PERSONS RECEIVING THIS DRAWING
 THE TECHNICAL MATERIEL CORPORATION claims proprietary right in the material disclosed hereon. This drawing is issued in confidence for engineering information only and may not be reproduced or used to manufacture anything shown hereon without permission from THE TECHNICAL MATERIEL CORPORATION to the user. This drawing is loaned for mutual assistance and is subject to recall at any time.