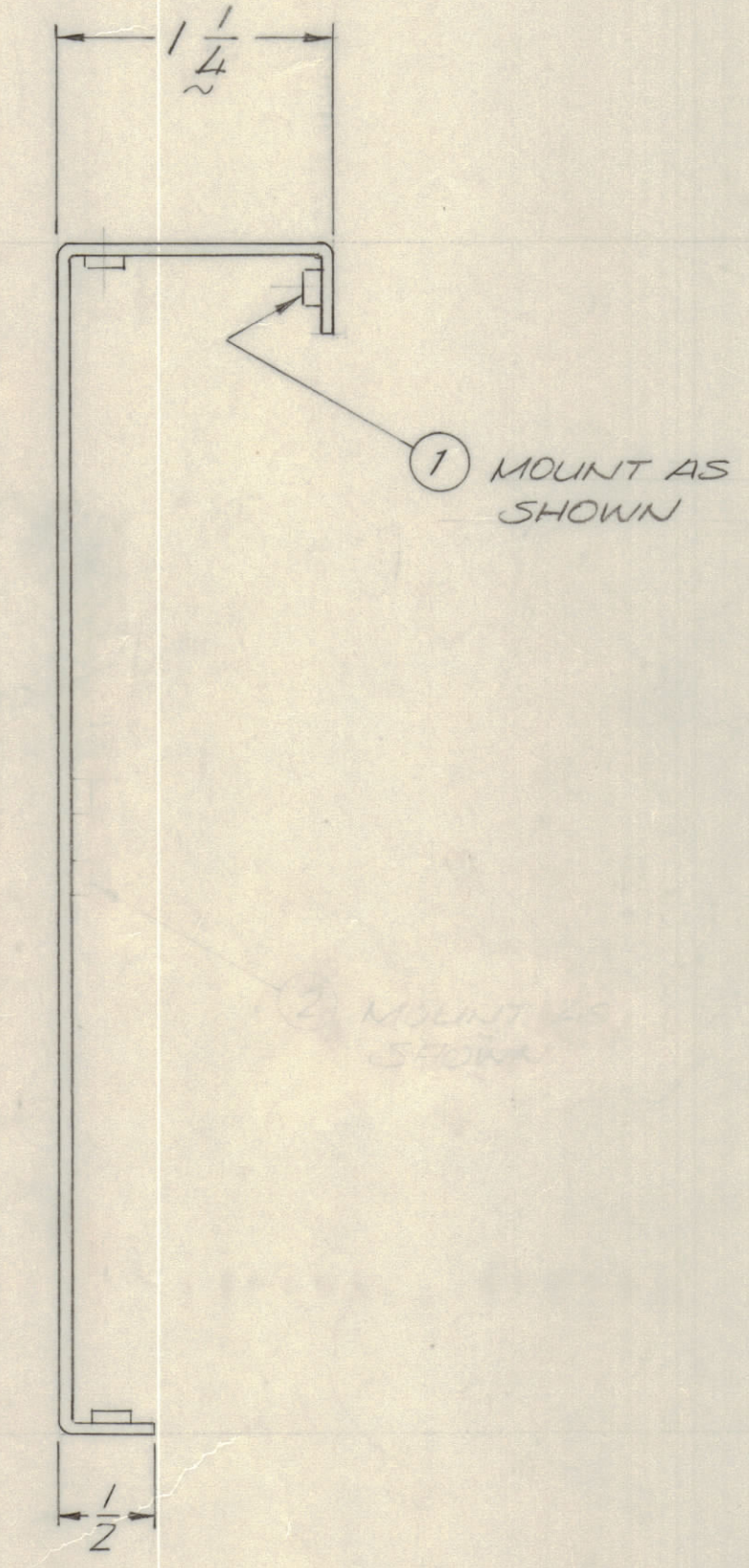
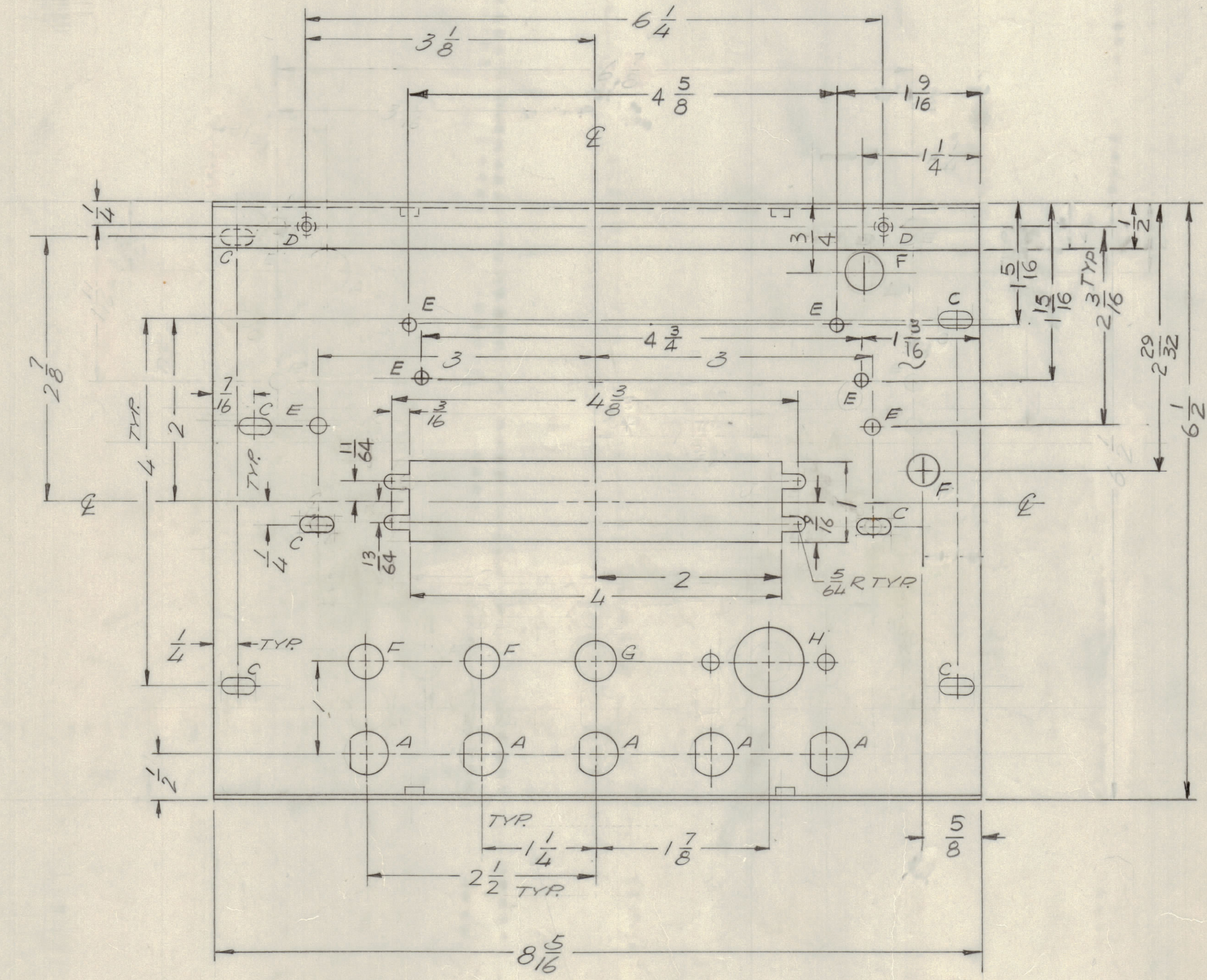
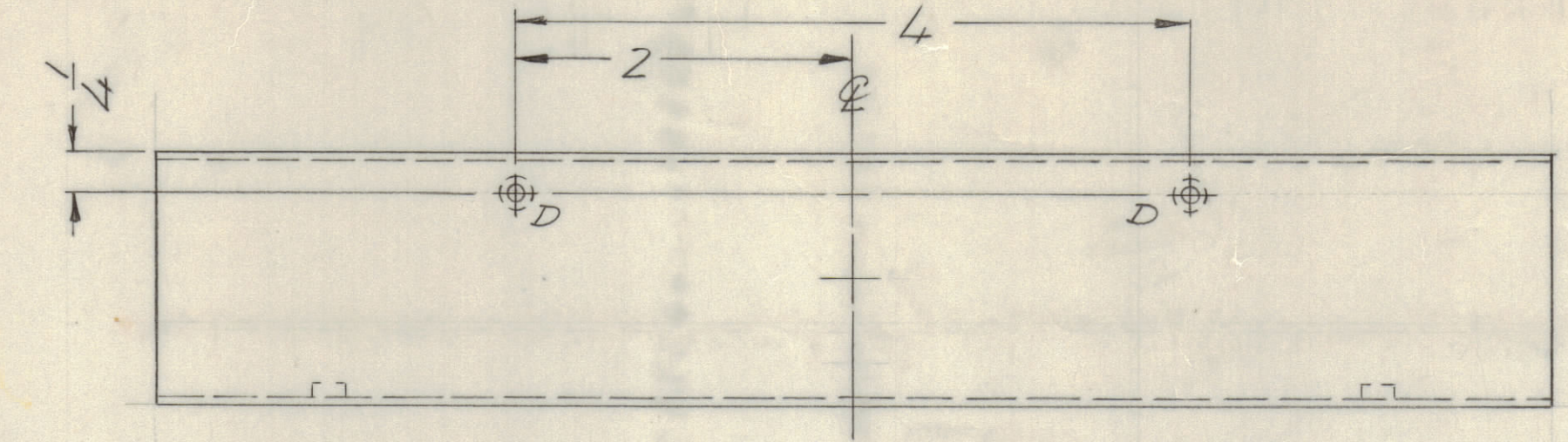
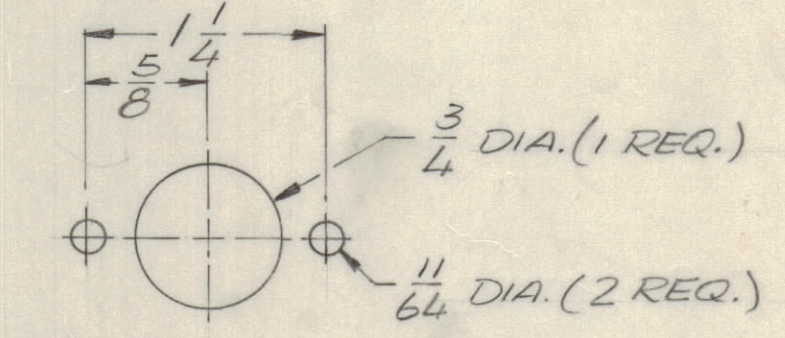


REVISIONS							
E.M.N.O	DRAFT	CHKD	ZONE	LTR	DESCRIPTION	DATE	APPROVED
CE				X1	1-1/4 (SIDE VIEW) WAS 1-1/2 RELOCATE F HOLES	6/22/73	
CE				X2	ADD ONE H DETAIL	11/14/73	
CE				X3	DIM. FOR CENTER CUTOUT REVISED	11-28-73	
CE				X4	G HL WAS 7/16	12.5.73	
CE				X5	REDESIGN (CONN. OPENING (NO NTS))	12/14/73	
CE				X6	ADD BOTTOM VIEW & 2 NTS	1/20/74	
CE				X7	ONE A HOLE & 4 E HOLES DELETED	4-8-75	
EDL				X8	ONE "F" HOLE ADDED	7-1-75	
GD				X9	4 E HOLES & ONE F HOLE ADDED	12-22-76	
EDL				X10	DIM 1-3/16 WAS 1-9/32	1-4-77	
G.E.				Ø	ORIGINAL RELEASE FOR PRODUCTION	1-26-77	*

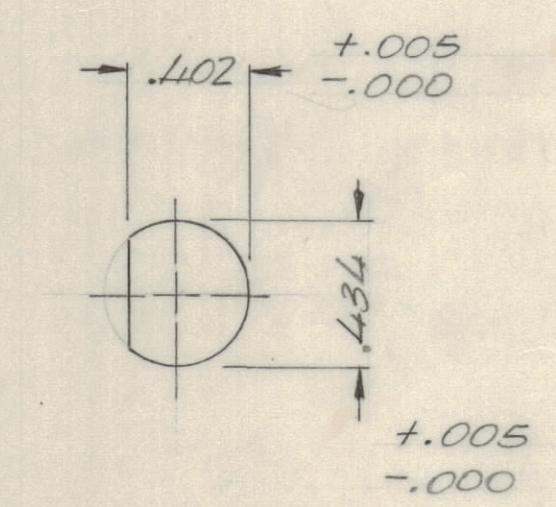


HOLE DESCRIPTION REQ.

- A - SEE DETAIL - 5
- B - DELETED -
- C - 11/64 x 3/8 SLOT - 7
- D - .191 - .194 DIA. - 6
- E - 11/64 DIA. - 6
- F - 3/8 DIA. - 4
- G - 15/32 DIA. - 1
- H - SEE DETAIL - 1



DETAIL H



DETAIL A

MARK TMC PART NUMBER  
1/8 HIGH GOTHIC WITH LATEST  
REVISION LETTER

- UNLESS OTHERWISE SPECIFIED:
- USE MATERIAL THICKNESS FOR MAXIMUM RADIUS ON ALL BENDS.
  - ALL ANGULAR BENDS 90 DEGREES.
  - REMOVE ALL BURRS AND SHARP EDGES.
  - MOUNT INSERTS AFTER FINISHING.

1		GPR110	BMAIS
QTY / UNIT	MODEL USED ON	ASSY NO.	
APPLICATION			
CODE			
NOTICE TO PERSONS RECEIVING THIS DRAWING			
THE TECHNICAL MATERIEL CORPORATION claims proprietary right in the material disclosed herein. This drawing is issued in confidence for engineering information only and may not be reproduced or used to manufacture anything shown herein without permission from THE TECHNICAL MATERIEL CORPORATION to the user. This drawing is loaned for mutual assistance and is subject to recall at any time.			

REF LD 3015

UNLESS OTHERWISE SPECIFIED DIMENSIONS ARE IN INCHES AND INCLUDE CHEMICALLY APPLIED OR PLATED FINISHES	
TOLERANCES ON	
DECIMALS	FRACTIONS
.X ± .05	± 1/64
.XX ± .01	ANGLES
.XXX ± .005	± 0° - 30'
MATERIAL .064 ALUM. 5052 H32	
FINISH 5404 YEL. IRIDITE	

QTY. REQ.	ITEM	PART NO.	DESCRIPTION	SYMBOL	
6	1	NT1290632-4	NUT ROUND	D	
F.B. LIST OF MATERIAL					
FINAL APPROVAL		DATE		THE TECHNICAL MATERIEL CORP. MAMARONECK, NEW YORK	
MECH. DES.		DATE			
ELECT. DES.		DATE			
CHECKED		DATE			
DRAWN		DATE		PLATE, REAR	
SIZE		CODE	IDENT NO.	DWG NO.	ISSUE
D		82679		MS 6488	Ø
SCALE 1:1				SHEET	OF