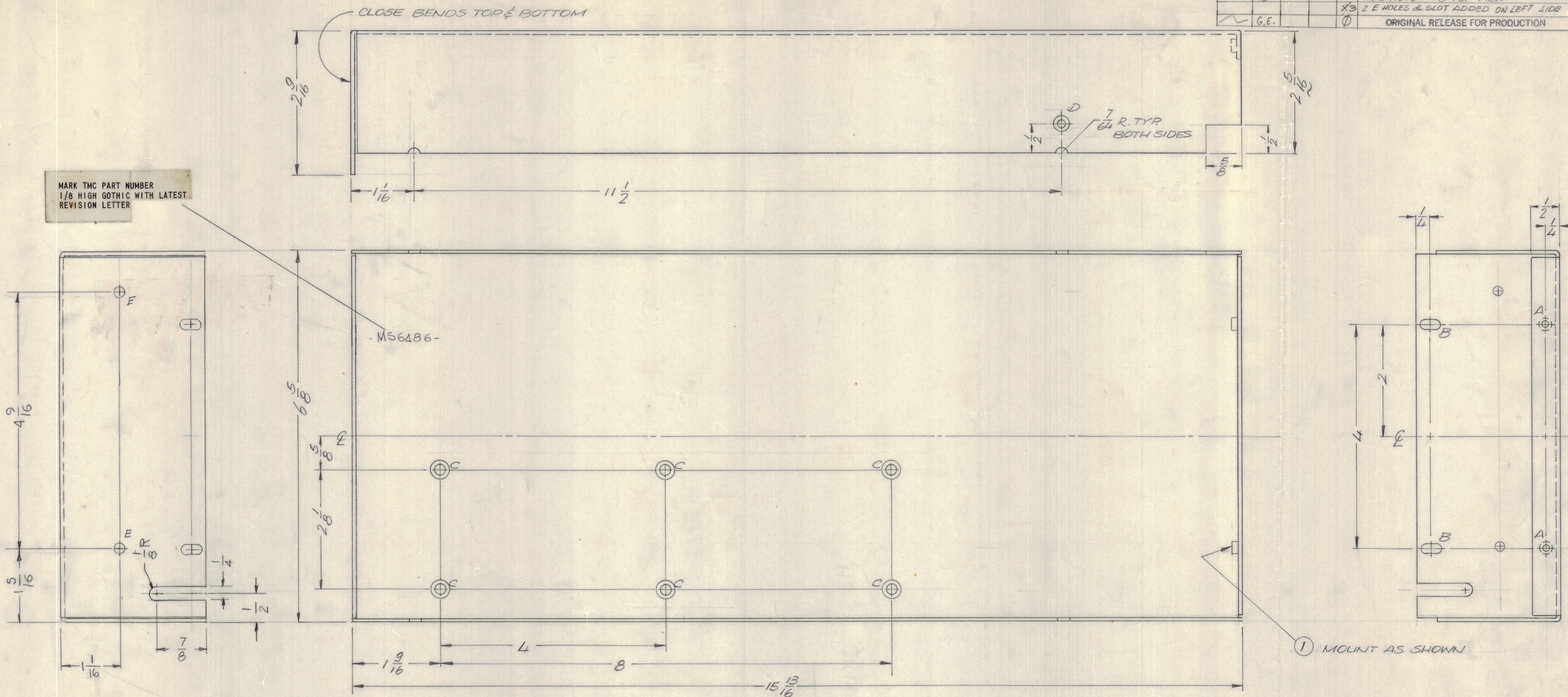


REVISIONS							
E.M.N.O	DRAFT	CHKD	ZONE	LTR	DESCRIPTION	DATE	APPROVED
	9E				2 5/16 WAS 2 3/16 (EXTEND 1/8)	9/23/73	
	9E				ADD NOTCH TO TOP VIEW	11/20/74	
				X3	2 E HOLES & SLOT ADDED ON LEFT SIDE	4-8-75	
	G.E.			0	ORIGINAL RELEASE FOR PRODUCTION	1-26-77	*



HOLE DESCRIPTION REQ.

A	.191 .194 DIA.	2
B	11/64 x 3/8 SLOT	2
C	.0832 C'SNK	6
D	.0632 C'SNK	1
E	11/64 DIA	2

1. USE MATERIAL THICKNESS FOR MAXIMUM RADIUS ON ALL BENDS.
2. ALL ANGULAR BENDS 90 DEGREES.
3. REMOVE ALL BURRS AND SHARP EDGES.
4. MOUNT INSERTS AFTER FINISHING.

1 GPR 110		
QTY / UNIT	MODEL USED ON	ASS'Y NO.
APPLICATION		
CODE		
NOTICE TO PERSONS RECEIVING THIS DRAWING		
<small>THE TECHNICAL MATERIEL CORPORATION claims proprietary right in the material disclosed hereon. This drawing is issued in confidence for engineering information only and may not be reproduced or used to manufacture anything shown hereon without permission from THE TECHNICAL MATERIEL CORPORATION to the user. This drawing is loaned for mutual assistance and is subject to recall at any time.</small>		

REF. LD 3013

UNLESS OTHERWISE SPECIFIED DIMENSIONS ARE IN INCHES AND INCLUDE CHEMICALLY APPLIED OR PLATED FINISHES	
DECIMALS	FRACTIONS
.X ± .05	± 1/64
.XX ± .01	ANGLES
.XXX ± .005	± 0° - 30'

QTY. REQ.	ITEM	PART NO.	DESCRIPTION	SYMBOL
2	1	NT1290632-4	NUT PLAIN ROUND	A

F. BUDETTI

LIST OF MATERIAL	
FINAL APPROVAL	DATE
MECH. DES.	DATE
ELECT. DES.	DATE
CHECKED	DATE
DRAWN	DATE

THE TECHNICAL MATERIEL CORP.  
MAMARONECK, NEW YORK

PLATE, RIGHT SIDE

SIZE	CODE	IDENT NO.	DWG NO.	ISSUE
D	82679		MS 6486	0

SCALE 1:1 SHEET OF