

SCALE	D	82679	MS6468
SIZE	CODE	IDENT NO.	DWG NO.
ISSUE	CHASSIS COL ASSY		
DATE	ELECT. DES.	CHECKED	DRAWN
DATE	MCH. DES.	DATE	DATE
DATE	DATE	DATE	DATE

FINAL APPROVAL	DATE	12/1/73
MCH. DES.	DATE	12-6-73
ELECT. DES.	DATE	
CHECKED	DATE	
DRAWN	DATE	

UNLESS OTHERWISE SPECIFIED DIMENSIONS ARE IN INCHES AND INCLUDE CHEMICALLY APPLIED OR PLATED FINISHES

TOLERANCES ON

FRACTIONS
X ± .05
ANGLES ± 1/64
X ± .005

DECIMALS
XXX ± .005

MATERIAL .125 ALUM

5202-H32

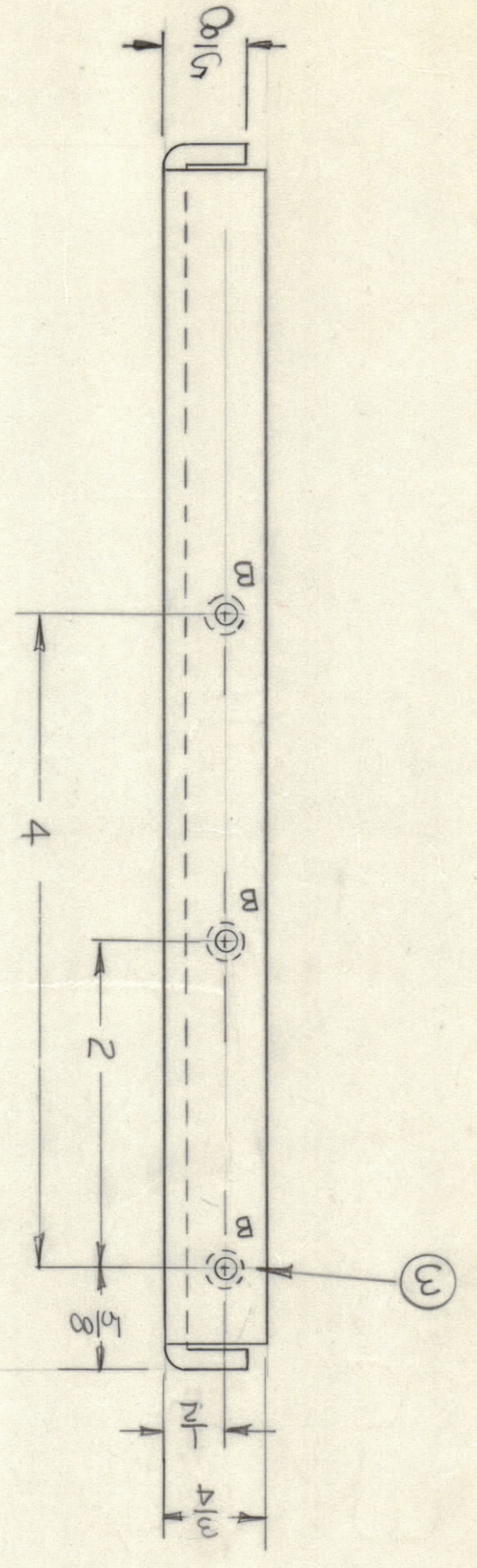
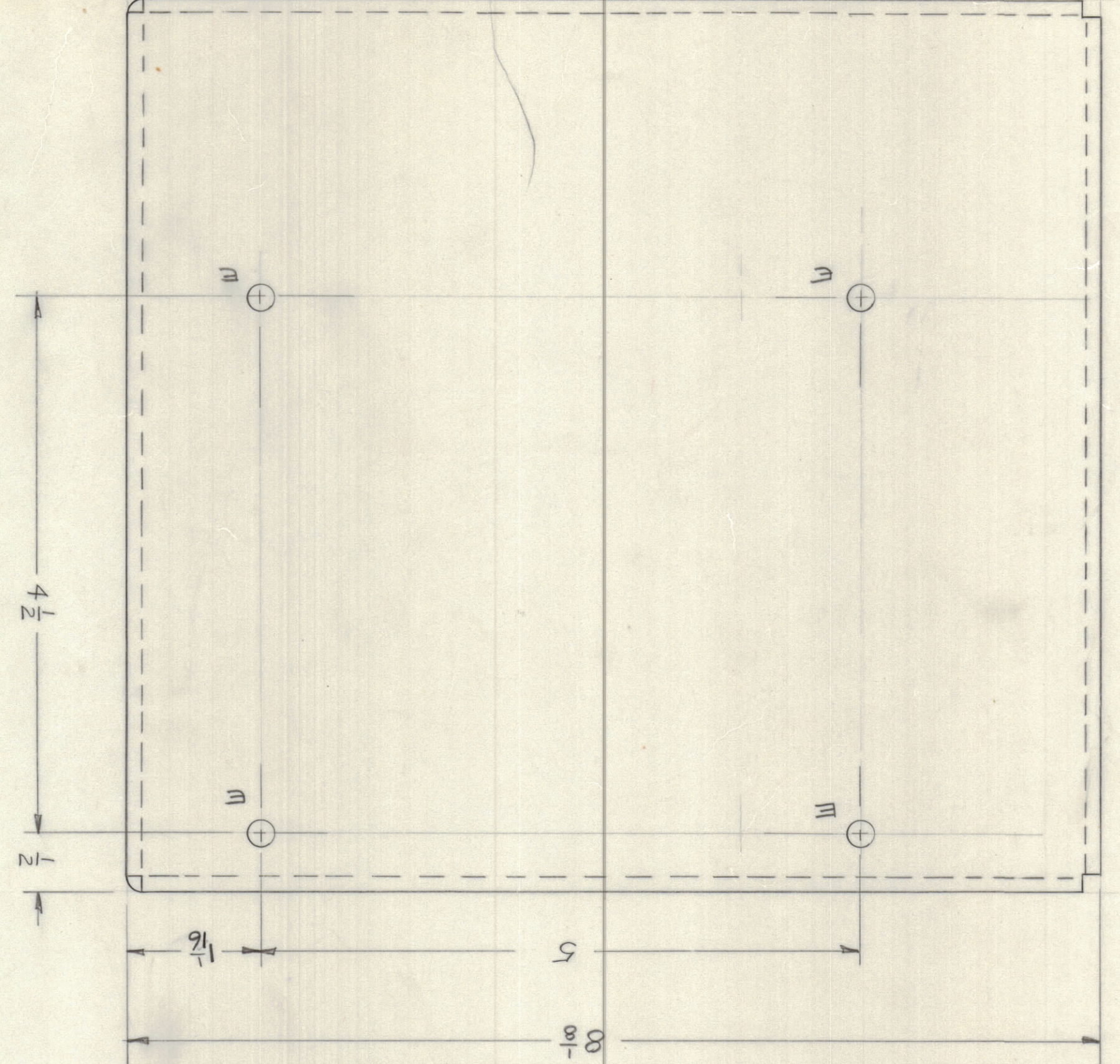
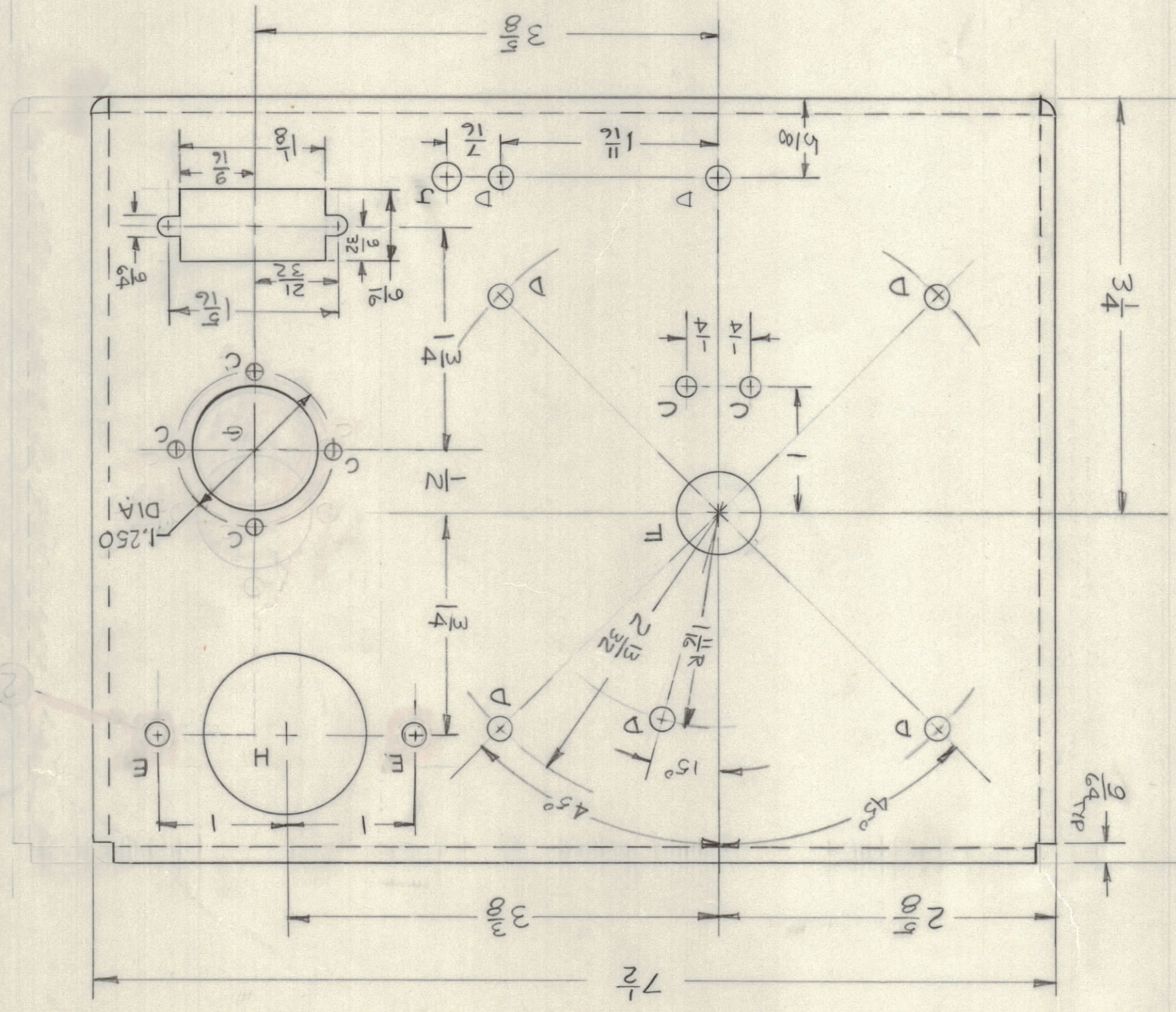
FINISH
5404 YEL R.117

NOTICE TO PERSONS RECEIVING THIS DRAWING	
THE TECHNICAL MATERIAL CORPORATION claims proprietary right in the material disclosed herein. This drawing is issued in confidence for engineering information only and may not be reproduced or used to manufacture anything shown herein without permission from THE TECHNICAL MATERIAL CORPORATION.	
CODE	
APPLICATION	
MODEL USED ON	
ASSY NO.	
QTY / UNIT	1
ASSTB	AX5176

QTY. REQ.	ITEM	PART NO.	DESCRIPTION	SYMBOL
3	3	NT129-0632-4	NUT, SWAGE	B
2	2	NT79-0832-4	NUT, SWAGE	A
1	1	BB126-5	BRKING, RKS	F

MS6468 A

- A ~ .221-224 DIA 2 REVD
- B ~ .151-.154 DIA 3 REVD
- C ~ 5/8 DIA 6 REVD
- D ~ 1/4 DIA 7 REVD
- E ~ 1/8 DIA 6 REVD
- F ~ .625 DIA 1 REVD
- G ~ 1" DIA 1 REVD
- H ~ 1-1/2 DIA 1 REVD
- J ~ 1/2 DIA 1 REVD



EM.NNO	DRAFT	CHKD	ZONE	LTR	DESCRIPTION	DATE	APPROVED
21188	GDV		3C	A	CHANGED 2 'A' HOLES TO 'E' HOLES	12-26-74	
	DV				ORIGINAL RELEASE FOR PRODUCTION	12/7/73	

REVISIONS