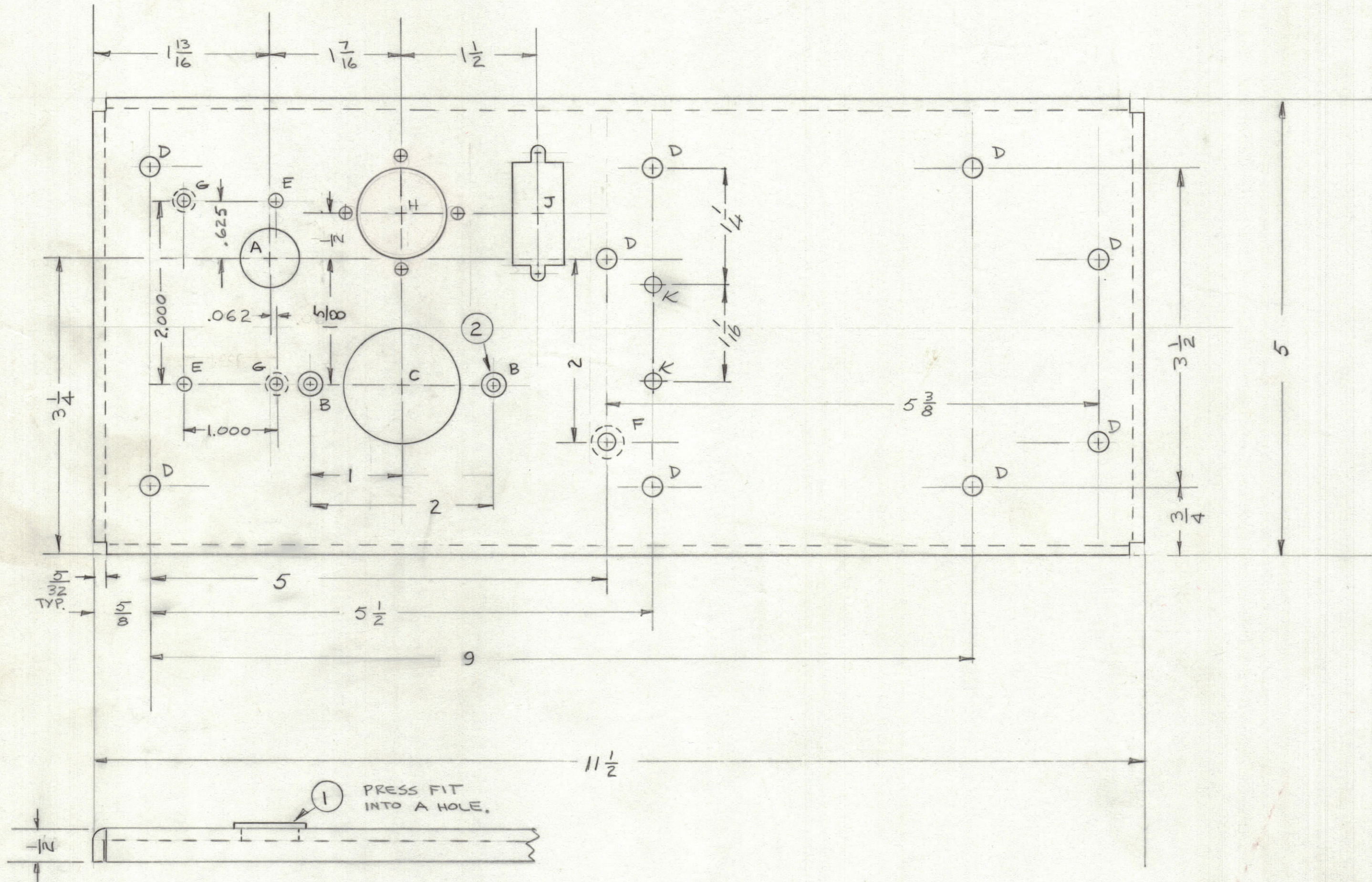
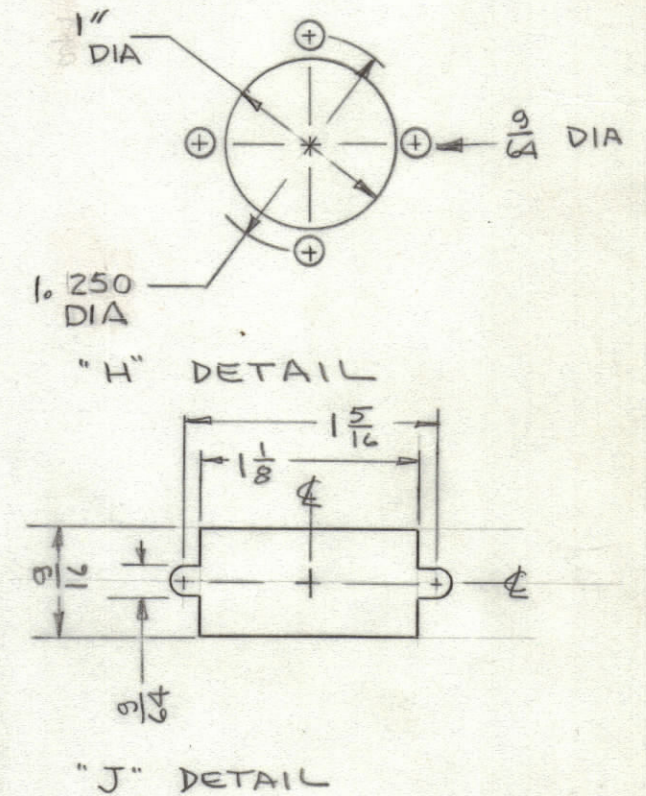


REVISIONS						
ZONE	LTR	DESCRIPTION	DATE	E.M.N.NO	DRAFT	CHKD APPD
	Ø	ORIGINAL RELEASE FOR PRODUCTION	11/8/73		DV	
	Δ	ON DETAIL "H" DIM 1" WAS 7/8 & 1.250 WAS 1.100	12/26/73	21180	GDL	



- A ~ .625 DIA 1 REQ'D
- B ~ .221-.224 DIA 2 REQ'D
- C ~ 1/4 DIA. 1 REQ'D
- D ~ 13/64 DIA 9 REQ'D
- E ~ 9/64 DIA. 2 REQ'D
- F ~ DRILL .169 DIA. 1 REQ'D
CTSK 82° TO .337 DIA
- G ~ DRILL .120 DIA 2 REQ'D
CTSK 82° TO .230 DIA.
- H ~ SEE DETAIL 1 REQ'D
- J ~ SEE DETAIL 1 REQ'D
- K 11/64 DIA. 2 REQ.



QTY. REQ.	ITEM	PART NO.	DESCRIPTION	SYMBOL
2	2	NT129-0832-4	NUT, SWAGE	B
1	1	BB126-5	BEARING	A

LIST OF MATERIAL

THE TECHNICAL MATERIEL CORP.
MAMARONECK, NEW YORK

CHASSIS CAP. ASS'Y.

QTY / UNIT	MODEL USED ON	ASS'Y NO.
1	AX5176	AX5179
APPLICATION		
CODE		
<p>NOTICE TO PERSONS RECEIVING THIS DRAWING</p> <p>THE TECHNICAL MATERIEL CORPORATION claims proprietary right in the material disclosed hereon. This drawing is issued in confidence for engineering information only and may not be reproduced or used to manufacture anything shown hereon without permission from THE TECHNICAL MATERIEL CORPORATION to the user. This drawing is loaned for mutual assistance and is subject to recall at any time.</p>		

UNLESS OTHERWISE SPECIFIED DIMENSIONS ARE IN INCHES AND INCLUDE CHEMICALLY APPLIED OR PLATED FINISHES

TOLERANCES ON

DECIMALS	FRACTIONS
.X ± .05	± 1/64
.XX ± .01	ANGLES
.XXX ± .005	± 0° -30'

MATERIAL 1/8 ALUM
5052-H32

FINISH
S404 YEL IRID

FINAL APPROVAL	DATE
<i>[Signature]</i>	11/16/73
MECH. DES.	DATE
ELECT. DES.	DATE
CHECKED	DATE
<i>[Signature]</i>	11-6-73
DRAWN	DATE
<i>[Signature]</i>	30 APR 73

SIZE	CODE IDENT.NO.	DWG NO.	ISSUE
C	82679	MS6463	A
SCALE	SHEET		OF