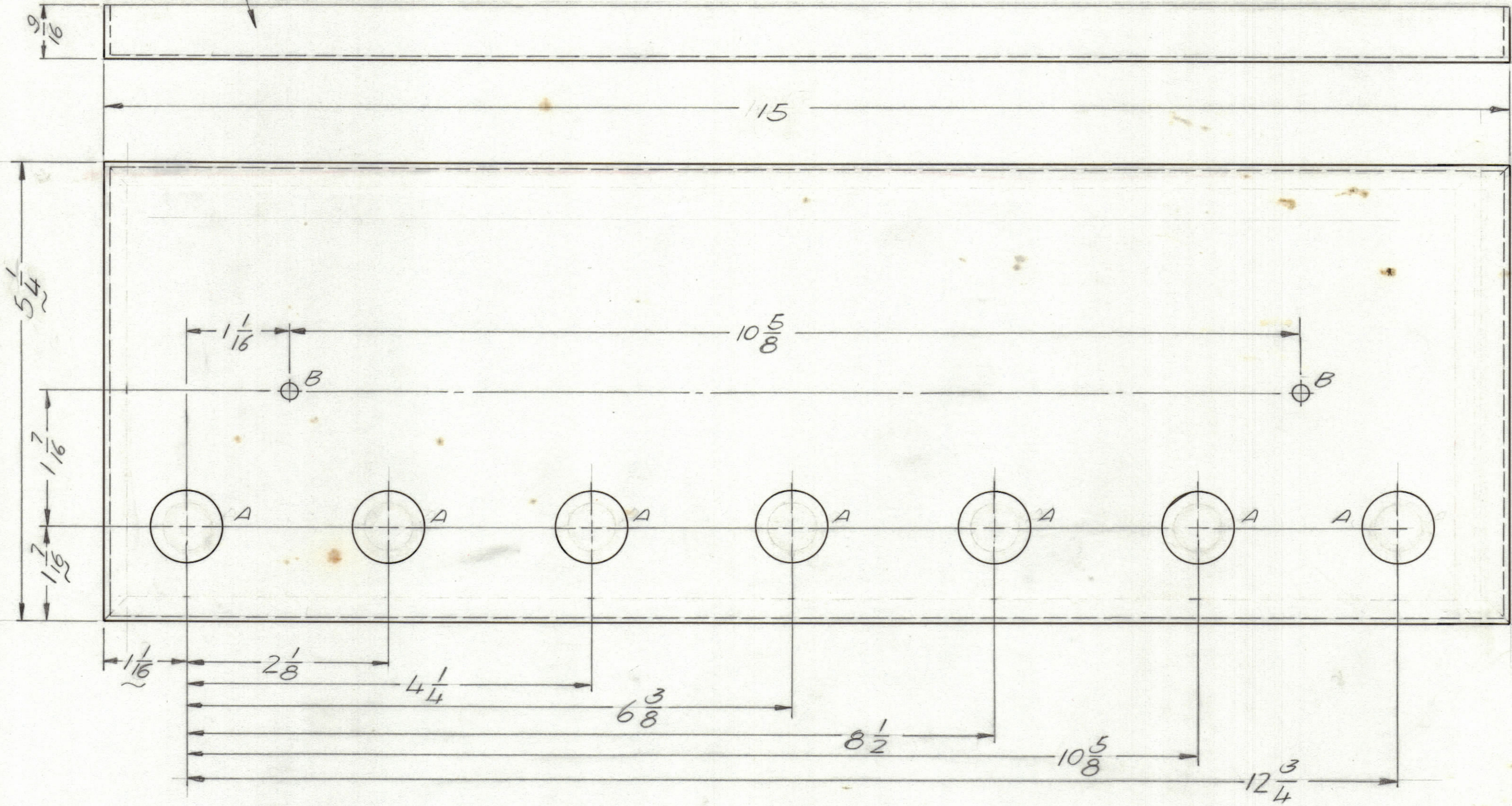


REVISIONS						
ZONE	LTR	DESCRIPTION	DATE	E.M.N.NO	DRAFT	CHKD APPD
	Ø	ORIGINAL RELEASE FOR PRODUCTION	3/24/73		Ø	

MARK TMC PART NUMBER
1/8 HIGH GOTHIC WITH LATEST
REVISION LETTER ON REAR OF PANEL



HOLE DESCRIPTION REQ

A	3/4 DIA	7
B	11/64 DIA.	2

REF. LD 2541

UNLESS OTHERWISE SPECIFIED
DIMENSIONS ARE IN INCHES
AND INCLUDE CHEMICALLY APPLIED
OR PLATED FINISHES

TOLERANCES ON

DECIMALS	FRACTIONS
.X ± .05	± 1/64
.XX ± .01	ANGLES
.XXX ± .005	± 0° -30'

QTY. REQ.	ITEM	PART NO.	DESCRIPTION	SYMBOL		
	F. BUDETTI LIST OF MATERIAL					
	FINAL APPROVAL	DATE	THE TECHNICAL MATERIEL CORP.			
	MECH. DES.	DATE	MAMARONECK, NEW YORK			
	ELECT. DES.	DATE	COVER, GEAR			
	CHECKED	DATE				
	DRAWN	DATE				
			SIZE	CODE IDENT. NO.	DWG NO.	ISSUE
			C	82679	MS6441	Ø
			SCALE 1:1			SHEET OF

FINISH NOTES:

- S404 - IRIDITE 14-2 AL-COAT.
- S114 - ZINC CHROMATE PRIMER
- S115 - SMOOTH GRAY ENAMEL

FRONT AND EDGES ONLY
PRIME AND PAINT PER CUSTOMER'S SPECIFICATIONS

QTY / UNIT	MODEL USED ON	ASS'Y NO.
	KIT 392	
	APPLICATION	
	CODE	

NOTICE TO PERSONS RECEIVING THIS DRAWING

THE TECHNICAL MATERIEL CORPORATION claims proprietary right in the material disclosed hereon. This drawing is issued in confidence for engineering information only and may not be reproduced or used to manufacture anything shown hereon without permission from THE TECHNICAL MATERIEL CORPORATION to the user. This drawing is loaned for mutual assistance and is subject to recall at any time.

1779 SW

Ø51 ALUM