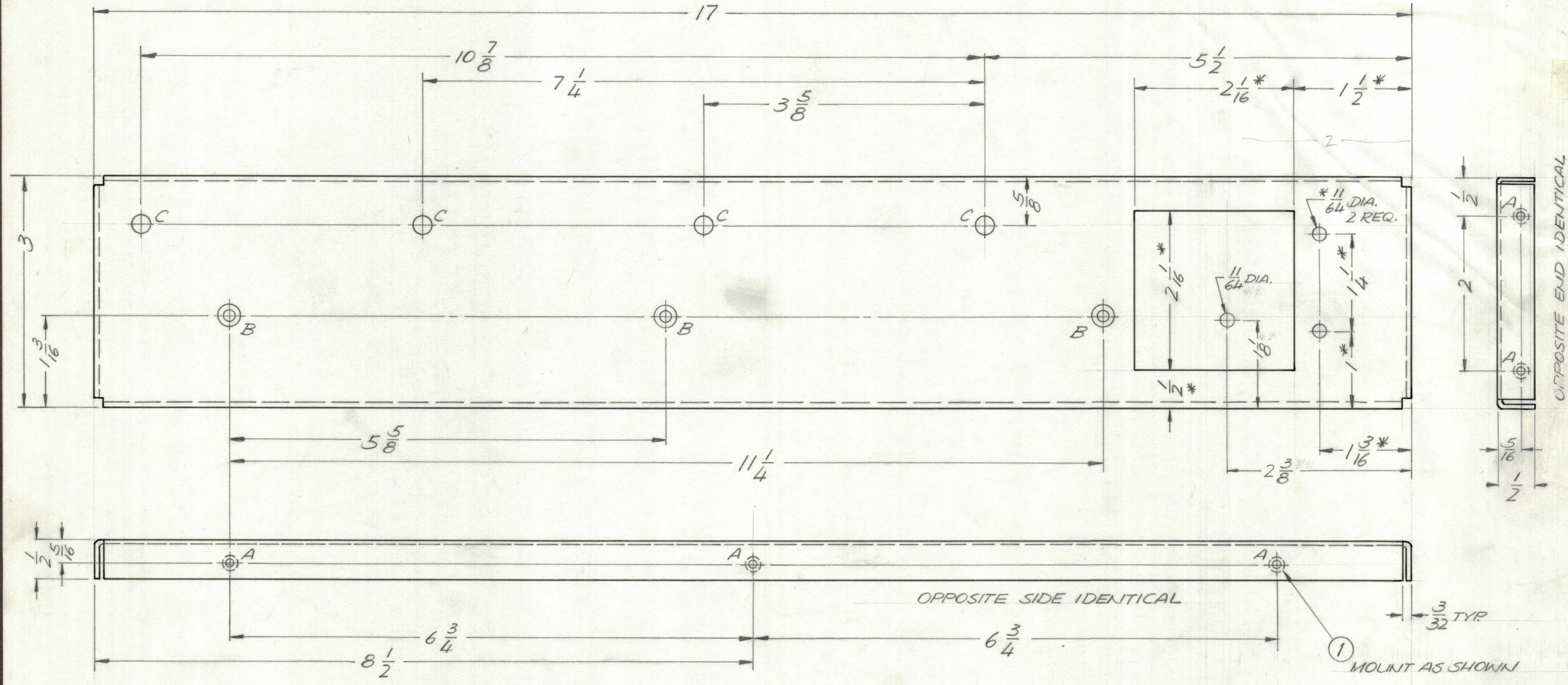


REVISIONS						
ZONE	LTR	DESCRIPTION	DATE	E.M.N.NO	DRAFT	CHKD APPD
	X1	ADD CAR.MTG. HOLE 11/64 DIA. RIGHT SIDE & DIMS 2 3/8 & 1-1/8	12/27/72		GE	
	Ø	ORIGINAL RELEASE FOR PRODUCTION	1/31/73		CL	



HOLE DESCRIPTION REQ.

- A—.191-.194 DIA.—10
- B-.0632 C'SNK (82°)—3
- C—.15/64 DIA.—4

MS-1 (LEFT SIDE) AS SHOWN  
MS-2 (RIGHT SIDE) MIRROR IMAGE

\* DENOTES DIMENSIONS USED ON LEFT SIDE DETAIL ONLY  
\*\* DENOTES DIMENSIONS USED ON RIGHT SIDE (CAR.MT.)

1 EACH	RSLI-1	
QTY / UNIT	MODEL USED ON	ASS'Y NO.
APPLICATION		
CODE		

NOTICE TO PERSONS RECEIVING THIS DRAWING  
THE TECHNICAL MATERIEL CORPORATION claims proprietary right in the material disclosed hereon. This drawing is issued in confidence for engineering information only and may not be reproduced or used to manufacture anything shown hereon without permission from THE TECHNICAL MATERIEL CORPORATION to the user. This drawing is loaned for mutual assistance and is subject to recall at any time.

UNLESS OTHERWISE SPECIFIED DIMENSIONS ARE IN INCHES AND INCLUDE CHEMICALLY APPLIED OR PLATED FINISHES

TOLERANCES ON  
 DECIMALS .X ± .05  
 .XX ± .01  
 .XXX ± .005  
 FRACTIONS ± 1/64  
 ANGLES ± 0° -30'

MATERIAL .064 ALUM  
5052 H32  
FINISH  
S404 VEL IRIDITE

10	1	NT129-0632-4	NUT, ROUND, SPLINE TYPE	A
QTY. REQ.	ITEM	PART NO.	DESCRIPTION	SYMBOL

O. POSE LIST OF MATERIAL

FINAL APPROVAL: *O. Pose* DATE: 11/29/72  
 MECH. DES. ALP. DATE:  
 ELECT. DES. DATE:  
 CHECKED DATE:  
 DRAWN: G. EVANGELIST DATE: 9/27/72

THE TECHNICAL MATERIEL CORP.  
MAMARONECK, NEW YORK

SIDE PANEL LEFT & RIGHT

SIZE	CODE	IDENT. NO.	DWG NO.	ISSUE
C	82679	MS6396		Ø

SCALE 1:1 SHEET OF

MS6396

OPPOSITE END IDENTICAL

OPPOSITE SIDE IDENTICAL

① MOUNT AS SHOWN