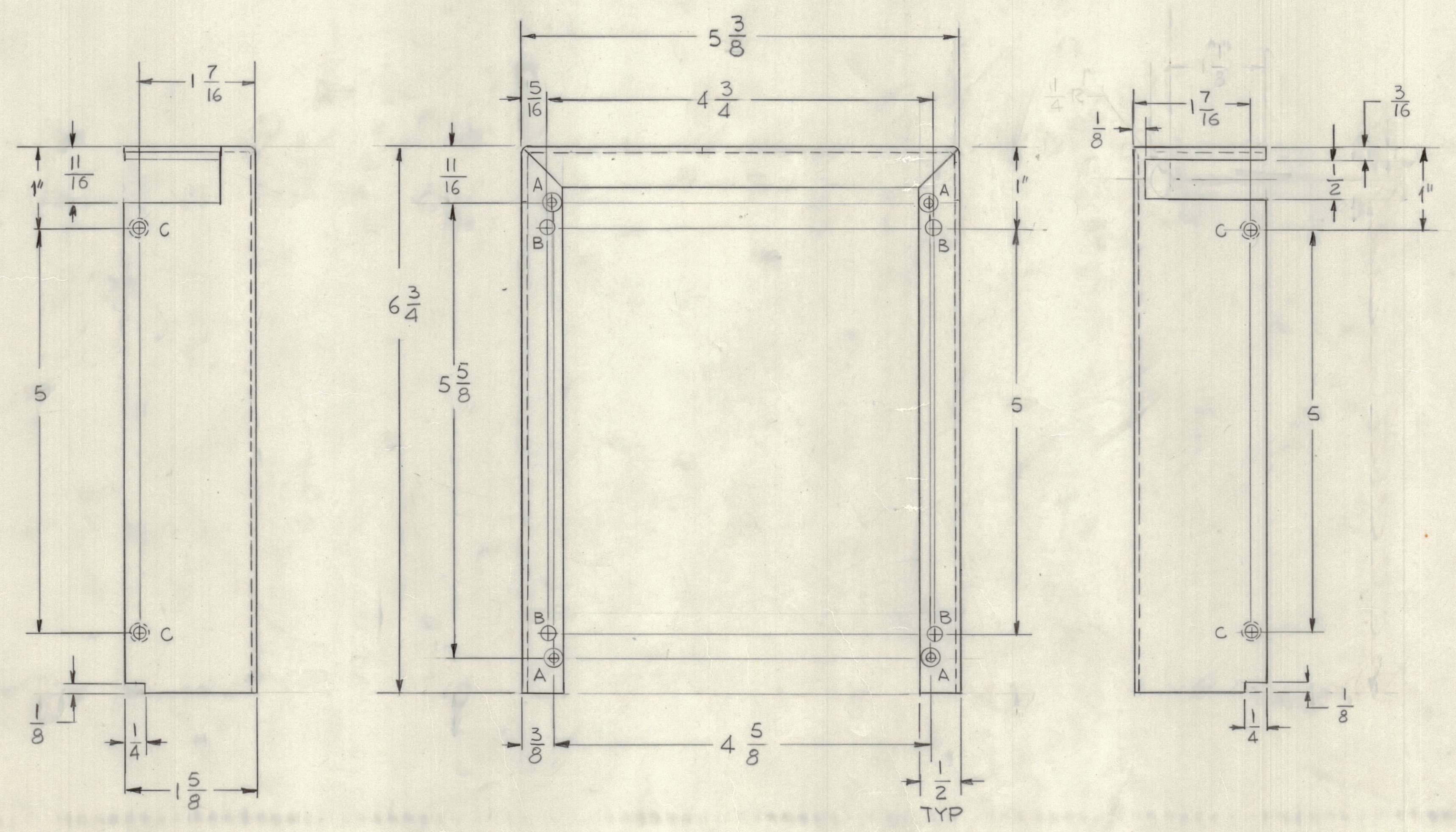
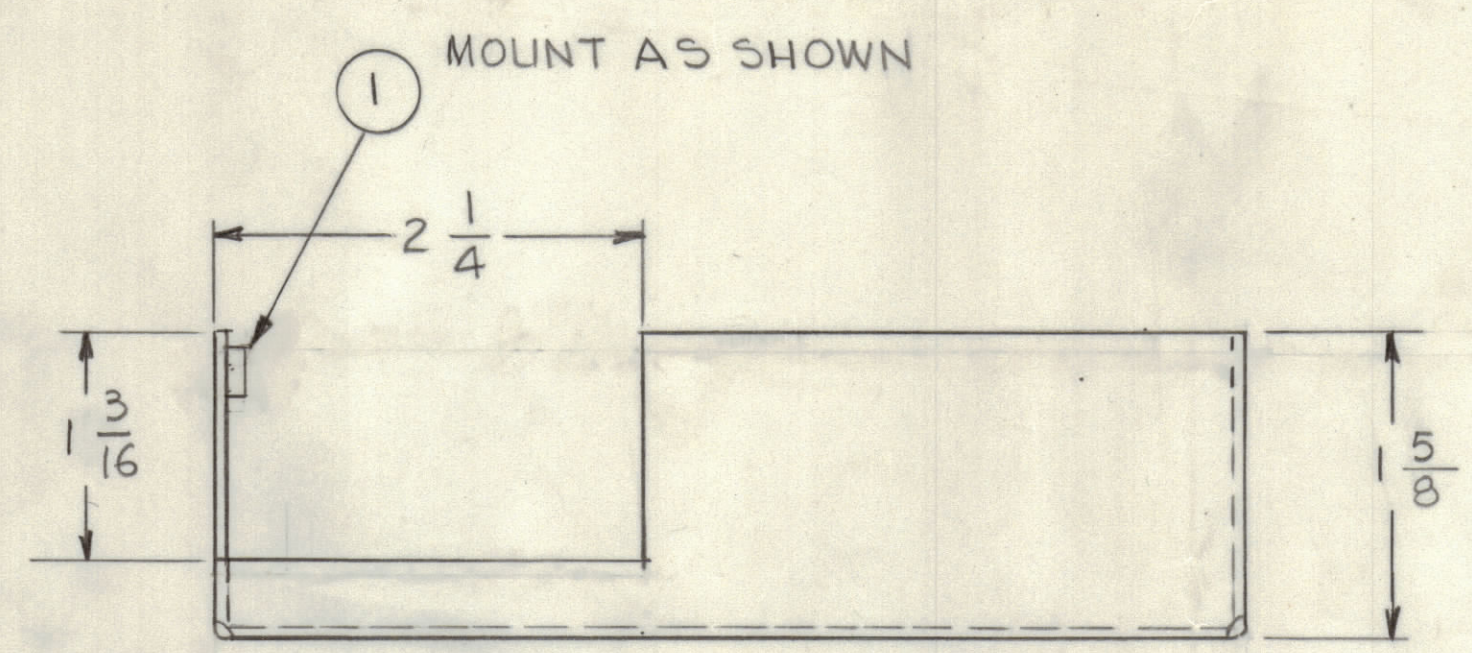


REVISIONS							
E.M.N.O	DRAFT	CHKD	ZONE	LTR	DESCRIPTION	DATE	APPROVED
	GDL			X2	REDRAWN WAS ON C SIZE	3-14-74	
	W			Ø	ORIGINAL RELEASE FOR PRODUCTION	6-20-74	
21341	GDL	WPP		A	1/2" WIDE SLOT REVISED	1-26-76	A



HOLES	DESCRIPTION	REQ
A	DRILL .120 DIA C'SHK 82° TO .230 DIA	4
B	3/16 DIA	4
C	.161 - .164 DIA	4

UNLESS OTHERWISE SPECIFIED:

- USE MATERIAL THICKNESS FOR MAXIMUM RADIUS ON ALL BENDS.
- ALL ANGULAR BENDS 90 DEGREES.
- REMOVE ALL BURRS AND SHARP EDGES.
- MOUNT INSERTS AFTER FINISHING.

TM 125	
QTY / UNIT	ASSY NO.
APPLICATION	
CODE	

UNLESS OTHERWISE SPECIFIED DIMENSIONS ARE IN INCHES AND INCLUDE CHEMICALLY APPLIED OR PLATED FINISHES

TOLERANCES ON

DECIMALS	FRACTIONS
.XX ± .01	1/64
.XXX ± .005	ANGLES ± 0° -30'

MATERIAL 063 THK ALUM 5052 H32 FINISH S404 YEL IRIDITE

4	1	NT129 0440	NUT, ROUND, SWAGE TYPE	C
QTY. REQ.	ITEM	PART NO.	DESCRIPTION	SYMBOL
LIST OF MATERIAL				
FINAL APPROVAL		DATE		<b>THE TECHNICAL MATERIEL CORP.</b> MAMARONECK, NEW YORK  <b>WRAPAROUND, CRYSTAL OVEN</b>
MECH. DES.		DATE		
ELECT. DES.		DATE		
CHECKED		DATE		
DRAWN		DATE		
G. DE LUCA		3-14-74		
SIZE	CODE	IDENT NO.	DWG NO.	ISSUE
D	82679	MS 6376		A
SCALE 1:1				SHEET OF

NOTICE TO PERSONS RECEIVING THIS DRAWING  
 THE TECHNICAL MATERIEL CORPORATION claims proprietary right in the material disclosed hereon. This drawing is issued in confidence for engineering information only and may not be reproduced or used to manufacture anything shown hereon without permission from THE TECHNICAL MATERIEL CORPORATION to the user. This drawing is loaned for mutual assistance and is subject to recall at any time.