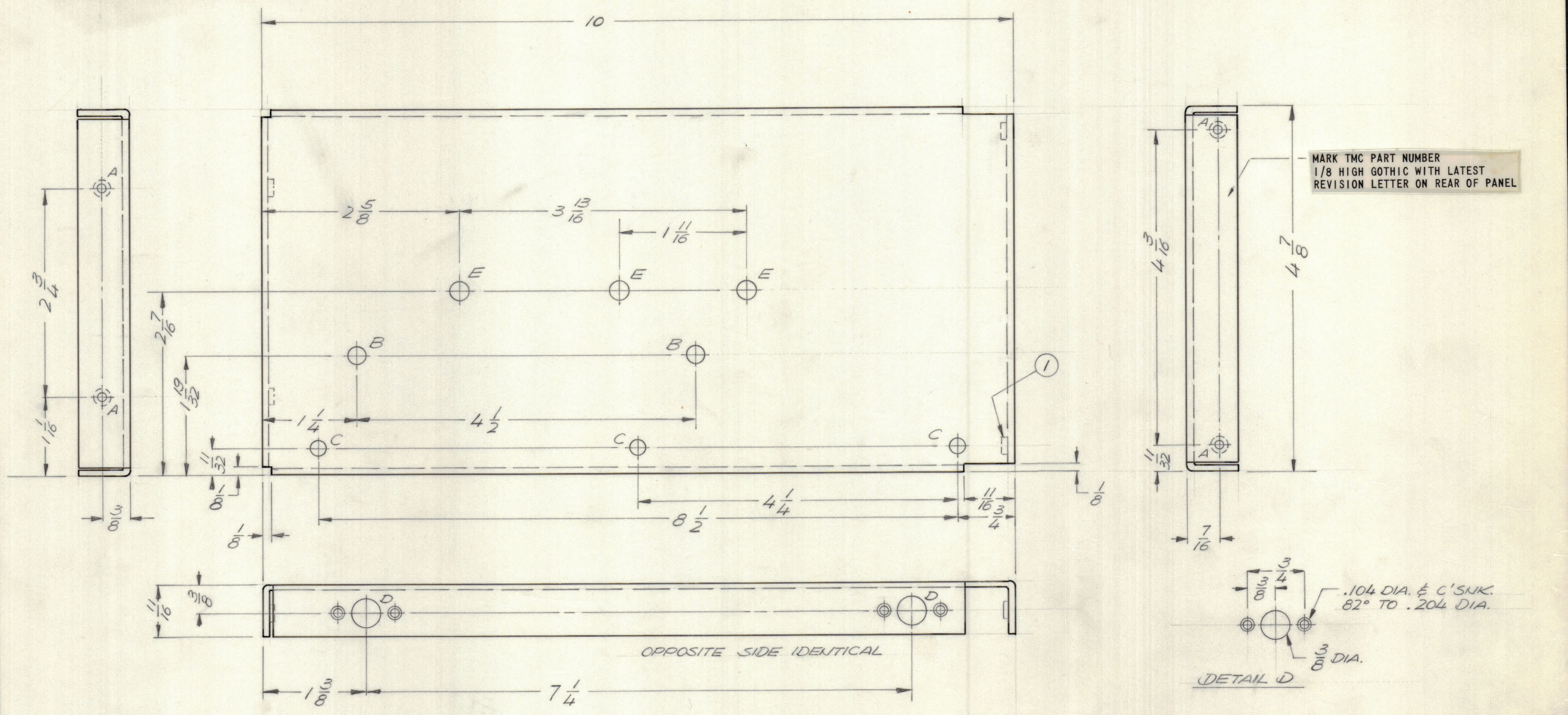


| REVISIONS | | | | | DATE | APPROVED |
|-----------|-------|------|------|-----|---------------------------------|----------|
| E.M.N.NO | DRAFT | CHKD | ZONE | LTR | DESCRIPTION | |
| | 0 | | | 0 | ORIGINAL RELEASE FOR PRODUCTION | 1/7/72 |



HOLE DESCRIPTION QTY.

| | | |
|---|----------------|---|
| A | .221-.224 DIA. | 4 |
| B | 15/64 DIA. | 2 |
| C | 13/64 DIA. | 3 |
| D | SEE DETAIL | 4 |
| E | 1/4 DIA. | 3 |

UNLESS OTHERWISE SPECIFIED:

- USE MATERIAL THICKNESS FOR MAXIMUM RADIUS ON ALL BENDS.
- ALL ANGULAR BENDS 90 DEGREES.
- REMOVE ALL BURRS AND SHARP EDGES.
- MOUNT INSERTS AFTER FINISHING.

| | | |
|---|---------------|-----------|
| 2 RFL | RDCR-1YA | AX516Z |
| QTY / UNIT | MODEL USED ON | ASS'Y NO. |
| APPLICATION | | |
| CODE | | |
| NOTICE TO PERSONS RECEIVING THIS DRAWING | | |
| THE TECHNICAL MATERIEL CORPORATION claims proprietary right in the material disclosed hereon. This drawing is issued in confidence for engineering information only and may not be reproduced or used to manufacture anything shown hereon without permission from THE TECHNICAL MATERIEL CORPORATION to the user. This drawing is loaned for mutual assistance and is subject to recall at any time. | | |

UNLESS OTHERWISE SPECIFIED DIMENSIONS ARE IN INCHES AND INCLUDE CHEMICALLY APPLIED OR PLATED FINISHES

TOLERANCES ON

| | |
|-------------|-----------|
| DECIMALS | FRACTIONS |
| .X ± .05 | ± 1/64 |
| .XX ± .01 | ANGLES |
| .XXX ± .005 | ± 0° -30' |

MATERIAL .081 THK. ALUM
5052 H32

FINISH S404
YELLOW IRIDITE

| 4 | 1 | NT-129-832-4 | NUT, SWAGE | | |
|-----------------------|------|--------------|--|---------|-------|
| QTY. REQ. | ITEM | PART NO. | DESCRIPTION | SYMBOL | |
| S.D. LIST OF MATERIAL | | | | | |
| FINAL APPROVAL | | DATE | THE TECHNICAL MATERIEL CORP. MAMARONECK, NEW YORK | | |
| S. De Marco | | 1-6-72 | | | |
| MECH. DES. R. Uzzo | | 12-15-71 | | | |
| ELECT. DES. | | DATE | | | |
| CHECKED R. Uzzo | | DATE | PLATE, SIDE (RIGHT & LEFT) | | |
| DRAWN GE | | DATE | | | |
| MATERIAL | | SIZE | CODE IDENT NO. | DWG NO. | ISSUE |
| 5052 H32 | | C | 82679 | MS6337 | 0 |
| FINISH | | SCALE 1:1 | | SHEET | OF |
| YELLOW IRIDITE | | | | | |