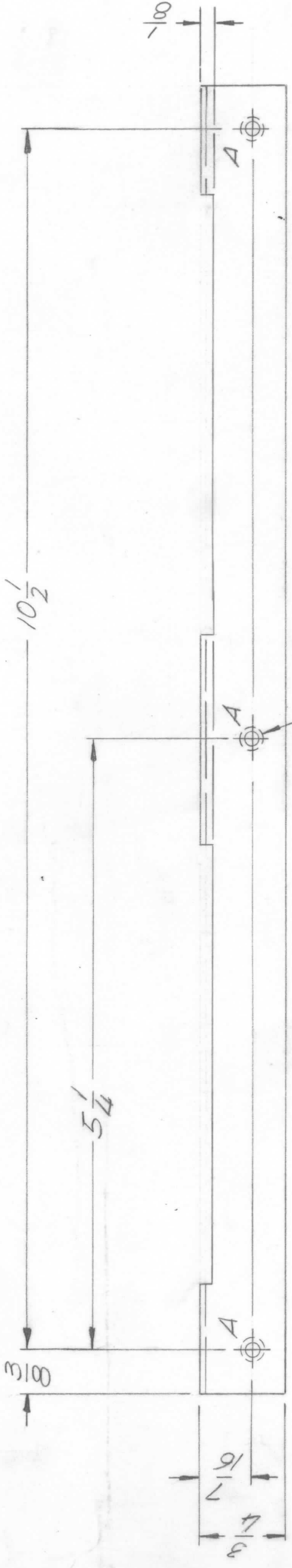
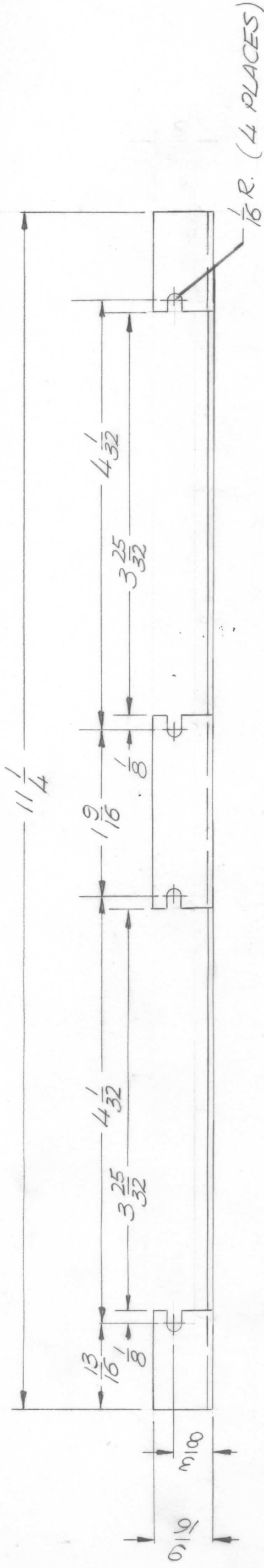


REVISIONS

ZONE	LTR	DESCRIPTION	DATE	E.M.N.NO	DRAFT	CHKD	APPD
0		ORIG RELEASE FOR PROD	6/18/71		W		B.E.A.



① MT. AS SHOWN AFTER FINISHING  
3 REQ.

A HOLES .191 - .194 DIA. - 3 REQ.

REQ'D ITEM	PART NUMBER	DESCRIPTION	SYM.
3	1	KT129-06324 NUT ROUND SWAGE TYPE	A

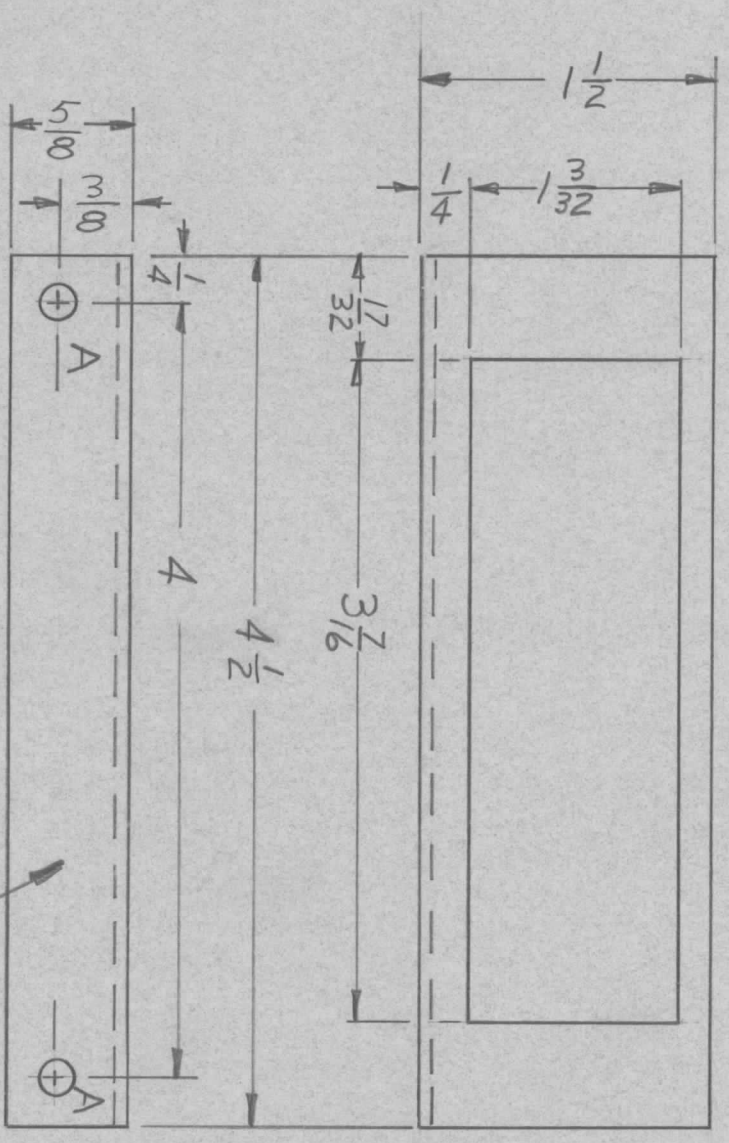
F. BUDETTI		LIST OF MATERIAL	
FINAL APPROVAL	DATE 6/18-71	THE TECHNICAL MATERIEL CORP.	MAMARONECK, NEW YORK
MECH. DES.	DATE 6-18-71	BRACKET COMM. MTG.	
ELECT. DES.	DATE 6-18-71	SIZE	CODE IDENT. NO. DWG NO.
CHECKED	DATE 5/2/71	B	82679 MS 6210
DRAWN	GE	SCALE	1:1
		SHEET	1
		OF	1

REF LD 2471		UNLESS OTHERWISE SPECIFIED DIMENSIONS ARE IN INCHES AND INCLUDE CHEMICALLY APPLIED OR PLATED FINISHES	
DECIMALS	FRACTIONS	TOLS.	ANGLES
X ± .05	1/64	.XX ± .01	0° .30'
.XXX ± .005			
MATERIAL .064 ALUM		FINISH	
5052 H32		SHA04 YEL. IRIDITE	

QTY / UNIT	MODEL USED ON	ASS'Y NO.
1	AX 5130	
APPLICATION		
	CODE	

NOTICE TO PERSONS RECEIVING THIS DRAWING  
THE TECHNICAL MATERIEL CORPORATION claims proprietary right in the material disclosed hereon. This drawing is issued in confidence for engineering information only and may not be reproduced or used to manufacture anything shown hereon without permission from THE TECHNICAL MATERIEL CORPORATION to the user. This drawing is loaned for mutual assistance and is subject to recall at any time.

REVISIONS							
ZONE	LTR	DESCRIPTION	DATE	E.M.N. NO	DRAFT	CHKD	APPD
Ø		ORIG RELEASE FOR PROD	9/5/71		CV		



A ~ 11/64 DIA. 2 REQ'D.

UNLESS OTHERWISE SPECIFIED:

1. USE MATERIAL THICKNESS FOR MAXIMUM RADIUS ON ALL BENDS.
2. ALL ANGULAR BENDS 90 DEGREES.
3. REMOVE ALL BURRS AND SHARP EDGES.
4. MOUNT INSERTS AFTER FINISHING.

MARK TMC PART NUMBER  
1/8 HIGH GOTHIC WITH LATEST  
REVISION LETTER

QTY / UNIT	1	MODEL USED ON	STE-5A	ASS'Y NO.	
APPLICATION		CODE			

NOTICE TO PERSONS RECEIVING THIS DRAWING  
THE TECHNICAL MATERIEL CORPORATION claims proprietary right in the material disclosed hereon. This drawing is issued in confidence for engineering information only and may not be reproduced or used to manufacture anything shown hereon without permission from THE TECHNICAL MATERIEL CORPORATION to the user. This drawing is loaned for mutual assistance and is subject to recall at any time.

UNLESS OTHERWISE SPECIFIED DIMENSIONS ARE IN INCHES AND INCLUDE CHEMICALLY APPLIED OR PLATED FINISHES

DECIMALS	FRACTIONS
.X ± .05	1/64
.XX ± .01	ANGLES
.XXX ± .005	90° - 30'

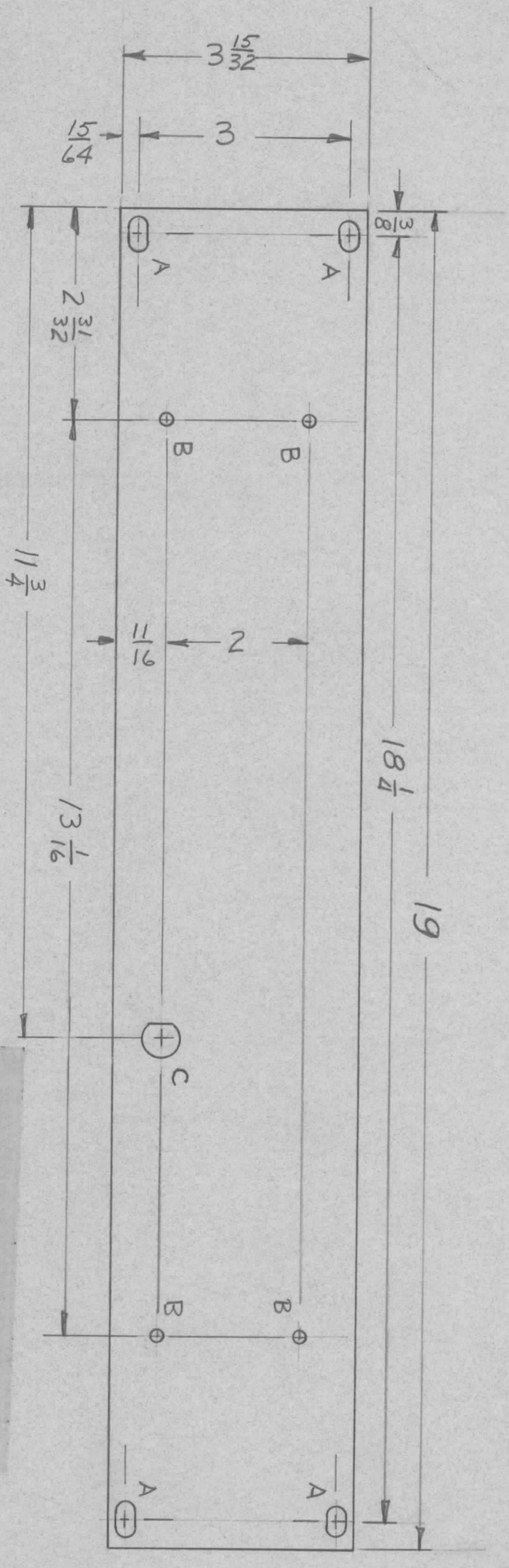
MATERIAL ALUM .064  
FINISH S404 YEL IRID.

REQ'D ITEM	PART NUMBER	DESCRIPTION	SYM.
------------	-------------	-------------	------

LIST OF MATERIAL  
THE TECHNICAL MATERIEL CORP.  
MAMARONECK, NEW YORK  
BRKT, RELAY MTG

FINAL APPROVAL	DATE	28 Aug 71	
MECH. DES.	DATE	20 Aug 71	
ELECT. DES.	DATE		
CHECKED	DATE		
DRAWN	DATE	25 Jul 71	
SIZE	CODE IDENT. NO.	DWG NO.	ISSUE
B	82679	MS6222	Ø
SCALE			SHEET OF

REVISIONS						
ZONE	LTR	DESCRIPTION	DATE	E.M.N. NO.	DRAFT	CHKD
	Ø	ORIG RELEASE FOR PROD	9/5/71		CV	



MARK TMC PART NUMBER  
1/8 HIGH GOTHIC WITH LATEST  
REVISION LETTER ON REAR OF PANEL

A ~ 1/4 x 29/64 SLOT 4 REQ'D  
B ~ 1/16 DIA. 4 REQ'D  
C ~ 1/2" D" HOLE 1 REQ'D

**MACHINING:**

1. MILL ALL EDGES.
2. HOLES MUST BE DRILLED, UNLESS OTHERWISE SPECIFIED.
3. LATERAL BOW OF PANEL MUST BE KEPT TO .031 TOLERANCE.
4. PANEL MUST BE FREE OF ALL MACHINING MARKS, GOUGES AND SCRATCHES. IF NECESSARY, SAND FRONT OF PANEL WITH NO. 120 GRIT SANDPAPER.

**FINISH NOTES:**

1. S404 - IRIDITE 14-2 AL-COAT.
  2. S114 - ZINC CHROMATE PRIMER
  3. S115 - SMOOTH GRAY ENAMEL
- FRONT AND EDGES ONLY
- PRIME AND PAINT PER CUSTOMER'S SPECIFICATIONS

QTY / UNIT	1	MODEL USED ON	SYH 1202	ASS'Y NO.	AX 5135
APPLICATION CODE					

NOTICE TO PERSONS RECEIVING THIS DRAWING  
THE TECHNICAL MATERIEL CORPORATION claims proprietary right in the material disclosed hereon. This drawing is issued in confidence for engineering information only and may not be reproduced or used to manufacture anything shown hereon without permission from THE TECHNICAL MATERIEL CORPORATION to the user. This drawing is loaned for mutual assistance and is subject to recall at any time.

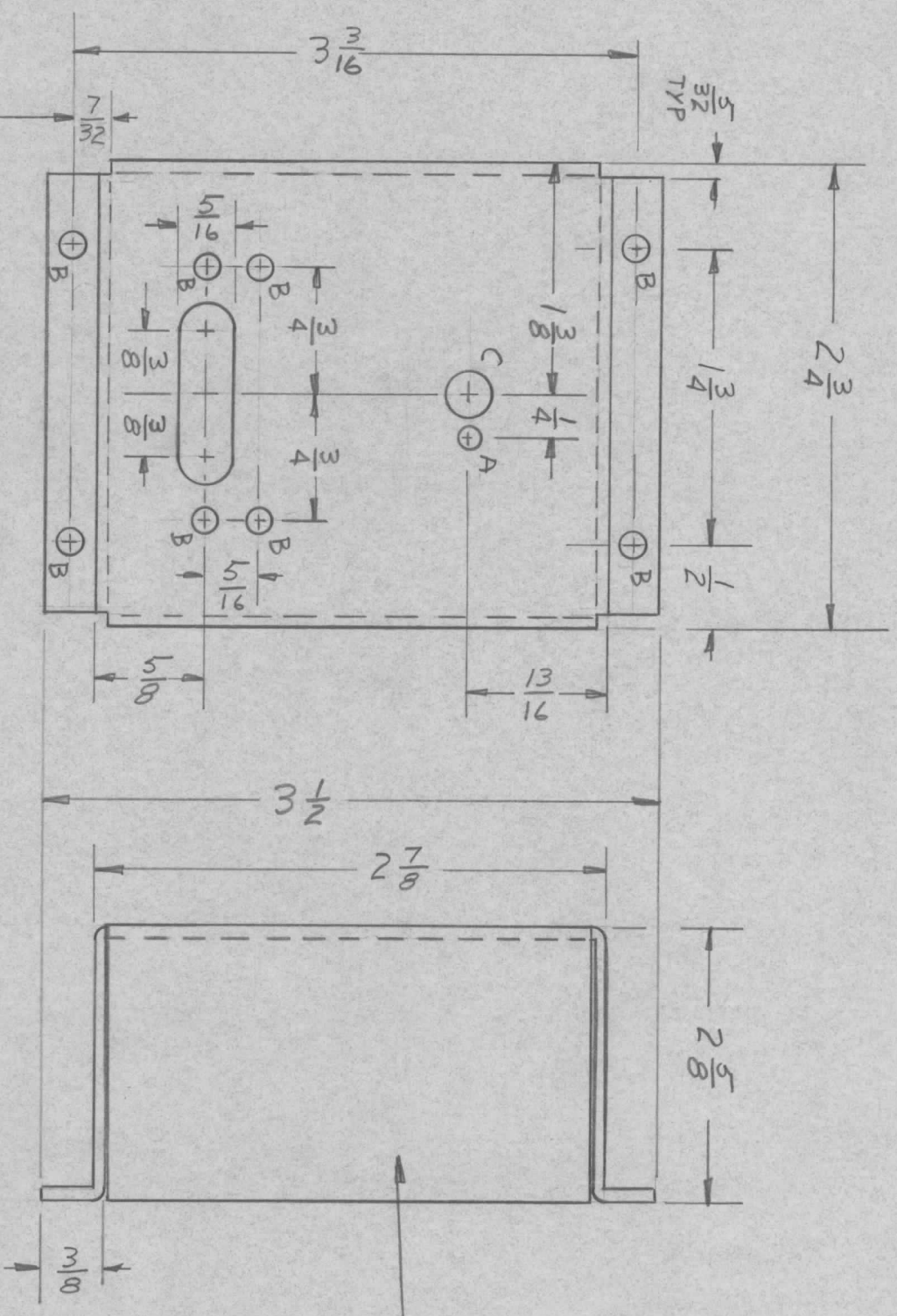
REQ'D	ITEM	PART NUMBER	DESCRIPTION	SYM.
			LIST OF MATERIAL	

FINAL APPROVAL	<i>[Signature]</i>	DATE	10/17/71
MECH. DES.	<i>[Signature]</i>	DATE	10/17/71
ELECT. DES.		DATE	
CHECKED		DATE	
DRAWN	<i>[Signature]</i>	DATE	12/21/71

UNLESS OTHERWISE SPECIFIED DIMENSIONS ARE IN INCHES AND INCLUDE CHEMICALLY APPLIED OR PLATED FINISHES	DECIMALS	FRACTIONS		
X ± .05	1/64			
.XX ± .01	TOLS.	ANGLES		
XXX ± .005		0° - 30°		
FINISH	MATERIAL	3/16 ALUM		
2024-T3				
SCALE	SIZE	CODE IDENT. NO.	DWG NO.	ISSUE
B	82679	MS6224		Ø

REVISIONS							
ZONE	LTR	DESCRIPTION	DATE	E.M.N. NO	DRAFT	CHKD	APPD
Ø		ORIG RELEASE FOR PROD	9/27/71		CV		

MARK TMC PART NUMBER  
1/8 HIGH GOTHIC WITH LATEST  
REVISION LETTER



- A ~  $\frac{1}{64}$  DIA 1 REQ'D
- B ~  $\frac{9}{64}$  DIA. 8 REQ'D.
- C ~  $\frac{17}{64}$  DIA 1 REQ'D

QTY / UNIT	1	SYM	1202	AX	5137
MODEL USED ON	APPLICATION				
ASS'Y NO.	CODE				

**NOTICE TO PERSONS RECEIVING THIS DRAWING**  
THE TECHNICAL MATERIEL CORPORATION claims proprietary right in the material disclosed hereon. This drawing is issued in confidence for engineering information only and may not be reproduced or used to manufacture anything shown hereon without permission from THE TECHNICAL MATERIEL CORPORATION to the user. This drawing is loaned for mutual assistance and is subject to recall at any time.

REF: LD 2482

REQ'D ITEM	PART NUMBER	DESCRIPTION	SYM.
LIST OF MATERIAL			

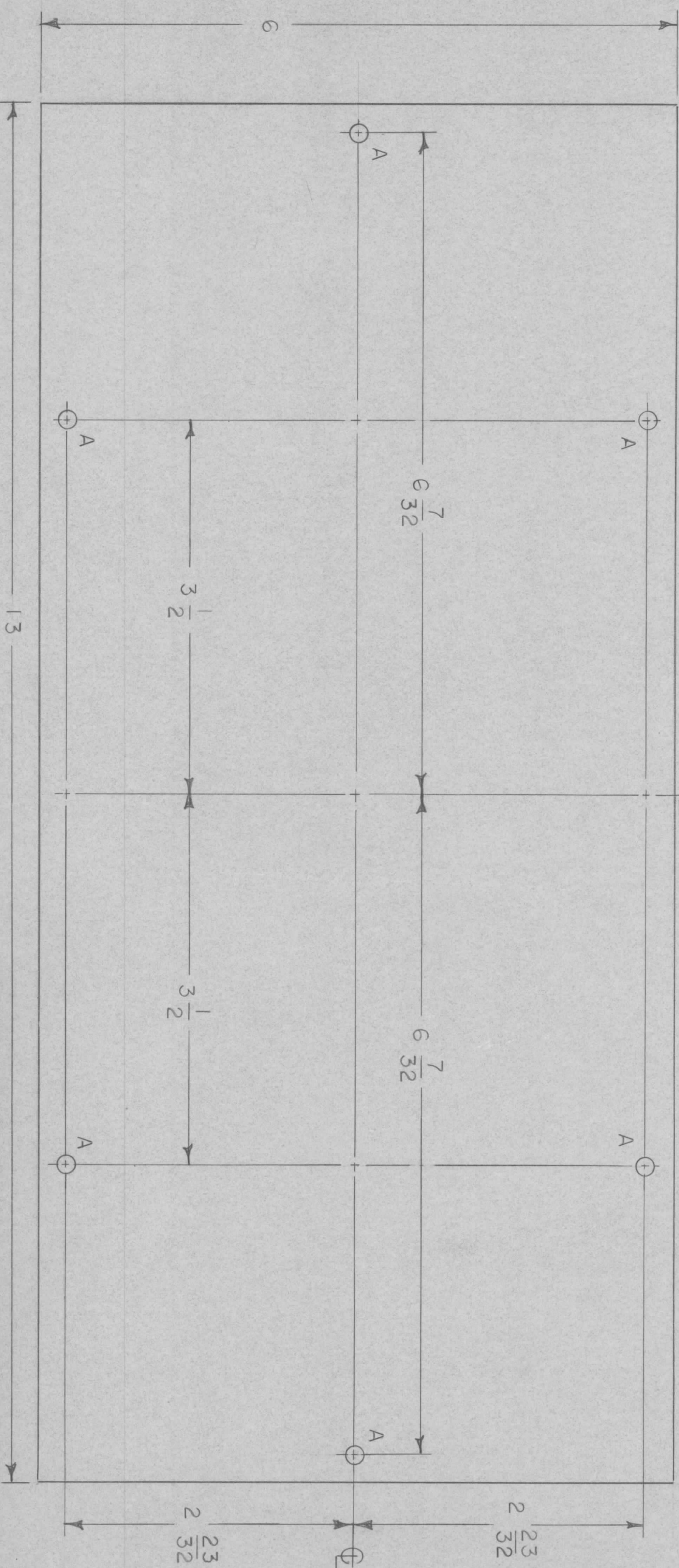
FINAL APPROVAL	DATE	18A 71
MECH. DES.	DATE	18A 71
ELECT. DES.	DATE	
CHECKED	DATE	
DRAWN	DATE	18A 71

UNLESS OTHERWISE SPECIFIED DIMENSIONS ARE IN INCHES AND INCLUDE CHEMICALLY APPLIED OR PLATED FINISHES			
DECIMALS	FRACTIONS	TOLS.	ANGLES
.X ± .05	1/64	.XX ± .01	90° .30'
.XXX ± .005			
MATERIAL .051 ALUM			
FINISH 5052-H32			
5404 YEL IRID			
SIZE	CODE IDENT. NO.	DWG. NO.	ISSUE
B	82679	MS6226	Ø
SCALE	SHEET		OF

THE TECHNICAL MATERIEL CORP.  
MAMARONECK, NEW YORK  
CHASSIS, MN

HOLE	DESCRIPTION	REQD
A	11/64 DIA	6

REVISIONS						
ZONE	LTR	DESCRIPTION	DATE	E.M.N.NO	DRAFT	CHKD
	Ø	ORIGINAL RELEASE	8/29/71			PK



UNLESS OTHERWISE SPECIFIED:

1. USE MATERIAL THICKNESS FOR MAXIMUM RADIUS ON ALL BENDS.
2. ALL ANGULAR BENDS 90 DEGREES.
3. REMOVE ALL BURRS AND SHARP EDGES.
4. MOUNT INSERTS AFTER FINISHING.

QTY / UNIT	1	MODEL USED ON	HFD-3	ASS'Y NO.	
APPLICATION		CODE			

NOTICE TO PERSONS RECEIVING THIS DRAWING  
 THE TECHNICAL MATERIEL CORPORATION claims proprietary right in the material disclosed hereon. This drawing is issued in confidence for engineering information only and may not be reproduced or used to manufacture anything shown hereon without permission from THE TECHNICAL MATERIEL CORPORATION to the user. This drawing is loaned for mutual assistance and is subject to recall at any time.

UNLESS OTHERWISE SPECIFIED DIMENSIONS ARE IN INCHES AND INCLUDE CHEMICALLY APPLIED OR PLATED FINISHES

DECIMALS	FRACTIONS
X ± .05	1/64
.XX ± .01	ANGLES
.XXX ± .005	0° - 30°

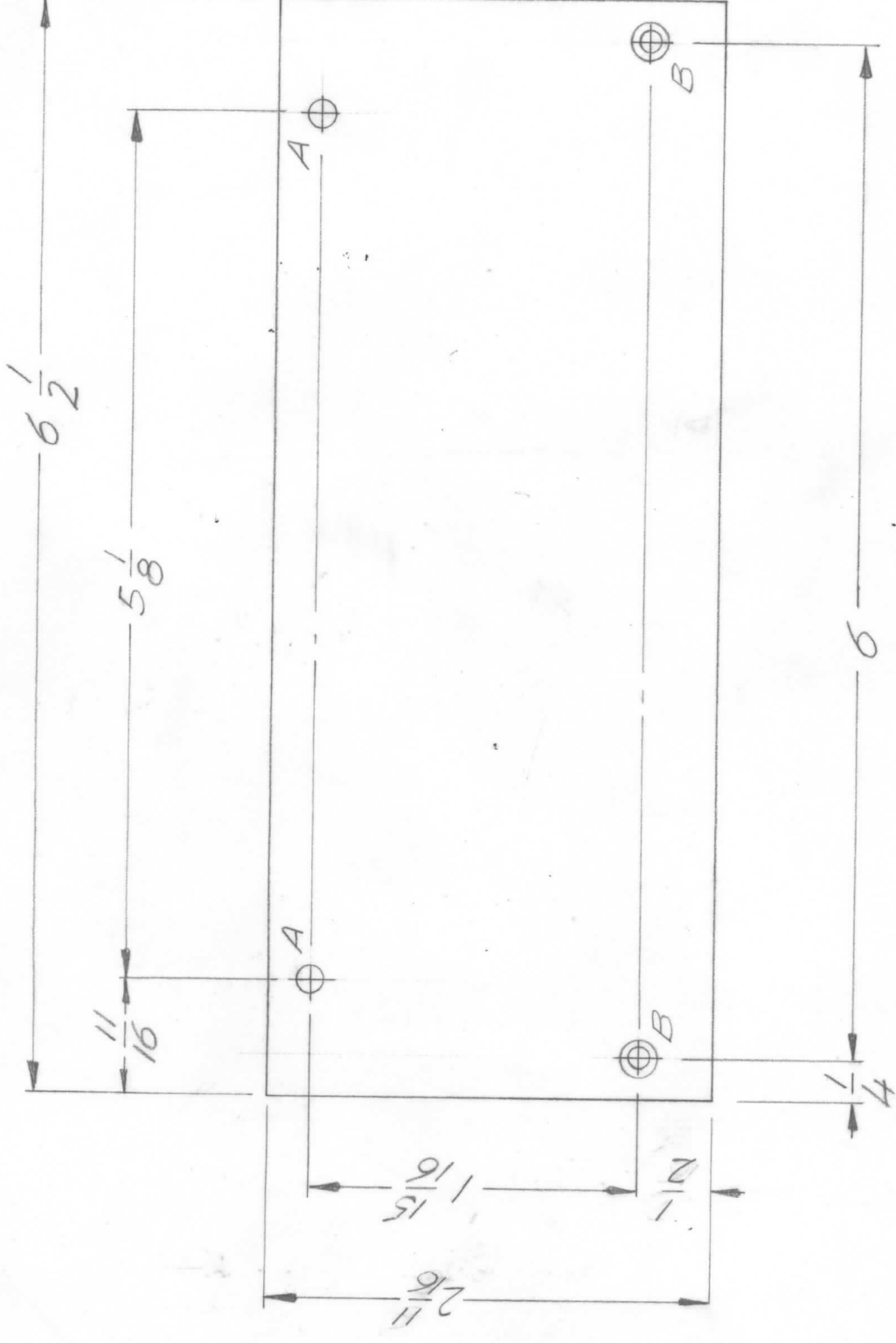
MATERIAL .064 THK ALUM 5052 H32  
 FINISH S 404 IRIDITE

REQ'D ITEM	PART NUMBER	DESCRIPTION	SYM.
------------	-------------	-------------	------

LIST OF MATERIAL  
 THE TECHNICAL MATERIEL CORP.  
 MAMARONECK, NEW YORK  
 COVER, TOP

FINAL APPROVAL	DATE	8/29/71
MECH. DES.	DATE	
ELECT. DES.	DATE	
CHECKED	DATE	
DRAWN	DATE	8-7-71
R. FORLANO		
SIZE	CODE IDENT. NO.	DWG. NO.
B	82679	MS 62229
SCALE	1/1	SHEET 1

ENGINEERING SKETCH NOT FOR PRODUCTION



HOLE	DESCRIPTION	REQ
A	5/32 DIA.	2
B	C/SNK 0440	2

2	TLAA-1K	AX 5132
QTY / UNIT	MODEL USED ON	ASS'Y NO.
APPLICATION		
CODE		

NOTICE TO PERSONS RECEIVING THIS DRAWING  
 THE TECHNICAL MATERIEL CORPORATION claims proprietary right in the material disclosed hereon. This drawing is issued in confidence for engineering information only and may not be reproduced or used to manufacture anything similar without permission from THE TECHNICAL MATERIEL CORPORATION to whom this drawing is loaned for mutual assistance and is subject to recall at

UNLESS OTHERWISE SPECIFIED DIMENSIONS ARE IN INCHES AND INCLUDE CHEMICALLY APPLIED OR PLATED FINISHES

DECIMALS: .X ± .05, .XX ± .01, .XXX ± .005  
 FRACTIONS: 1/64  
 TOLS. ANGLES: 0° .30'

MATERIAL: .051 ALUM  
 5052 H 32  
 FINISH: S404  
 YEL. IRIDITE

REQ'D ITEM	PART NUMBER	DESCRIPTION	SYM.
F. BUDETTI LIST OF MATERIAL			
FINAL APPROVAL	DATE	THE TECHNICAL MATERIEL CORP. MAMARONECK, NEW YORK	
Mech. Des.	DATE	COVER, TUNE CAP CHASSIS	
A. PETROCCA	9-9-71	SIZE	CODE IDENT. NO. DWG NO.
ELECT. DES.	DATE	B	82679 MS 6241
CHECKED	DATE	SCALE	1:1 SHEET
DRAWN	DATE		
GE	4/7/71		

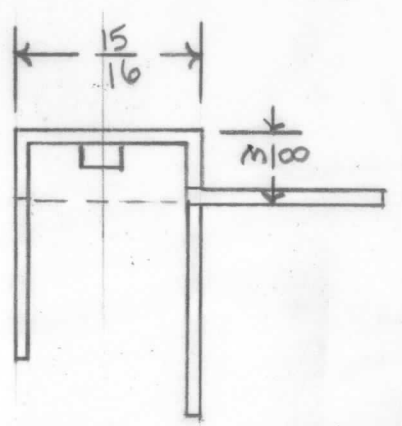
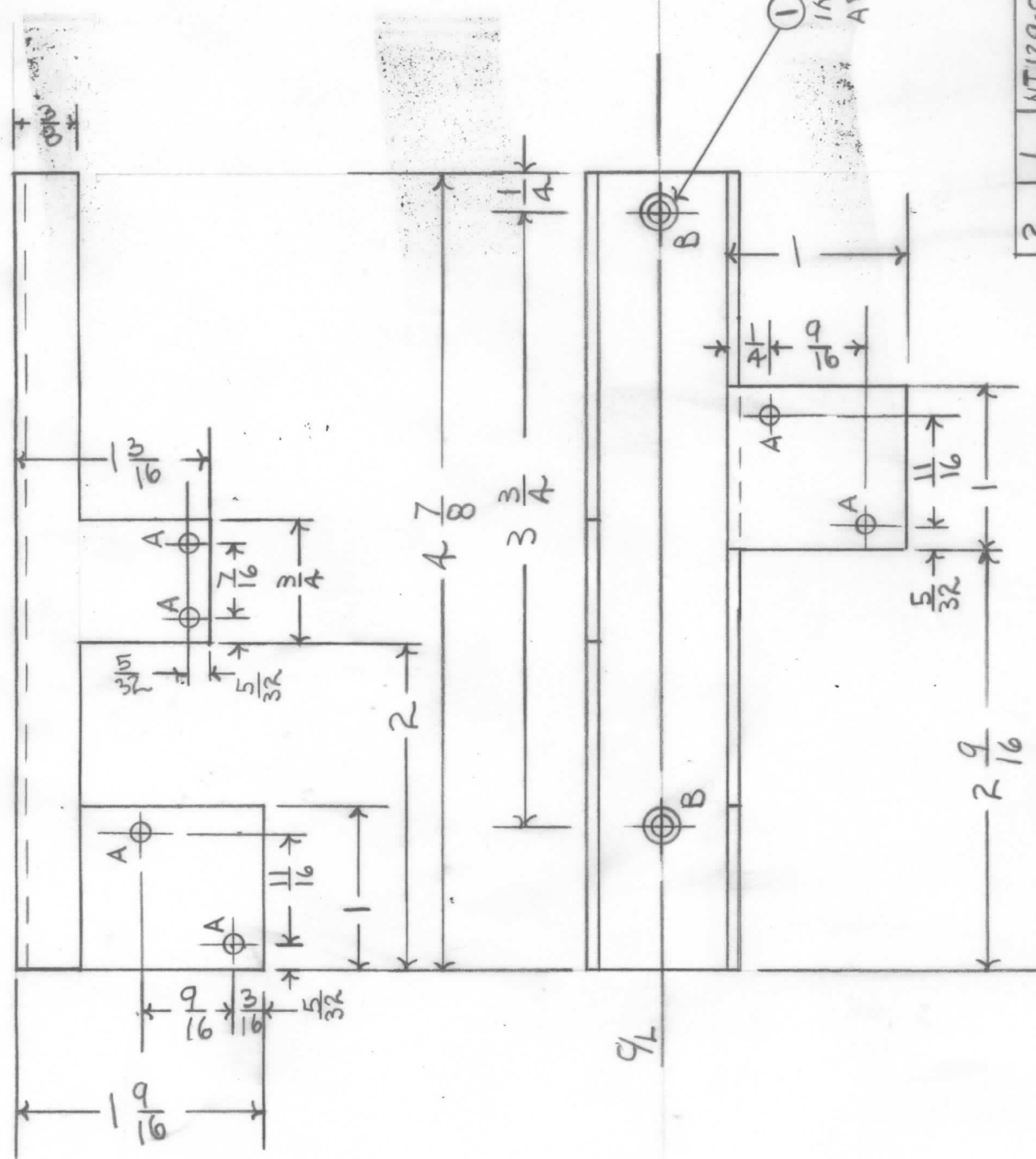
REVISIONS			
ZONE	LTR	DESCRIPTION	DATE
	Ø	ORIG. RELEASE FOR PROD.	9/9/71

APPD	CHKD	DRAFT	E.M.N. NO
		RG	

4 3 2 1

REVISIONS

ZONE	LTR	DESCRIPTION	DATE	E.M.N.NO	DRAFT	CHKD	APPD
Ø		ORIG RELEASE FOR PROD	10/14/71		CV		



HOLE	DESCRIPTION	QTY
A	9/64 DIA.	6
B	.191-.194	2

REQ'D ITEM	PART NUMBER	DESCRIPTION	SYM.
2	1	NT129-0632-4 NUT, PLAN SPINE	B

FINAL APPROVAL	DATE	MECH. DES.	DATE	ELECT. DES.	DATE	CHECKED	DATE	DRAWN	DATE
<i>[Signature]</i>	23/10/71	<i>[Signature]</i>	23/10/71					<i>[Signature]</i>	9/16/71

SIZE	CODE IDENT. NO.	DWG NO.	ISSUE
B	82679	MS 6244	Ø

UNLESS OTHERWISE SPECIFIED DIMENSIONS ARE IN INCHES AND INCLUDE CHEMICALLY APPLIED OR PLATED FINISHES

DECIMALS: .XX ± .01, .XXX ± .005  
 FRACTIONS: 1/64  
 TOLS.: .005  
 ANGLES: 0°-30'

MATERIAL: .064 ALUM  
 FINISH: YEL. IRIDITE

QTY / UNIT: TLAA-1K  
 MODEL USED ON: TR 195  
 ASS'Y NO.: APPLICATION

CODE

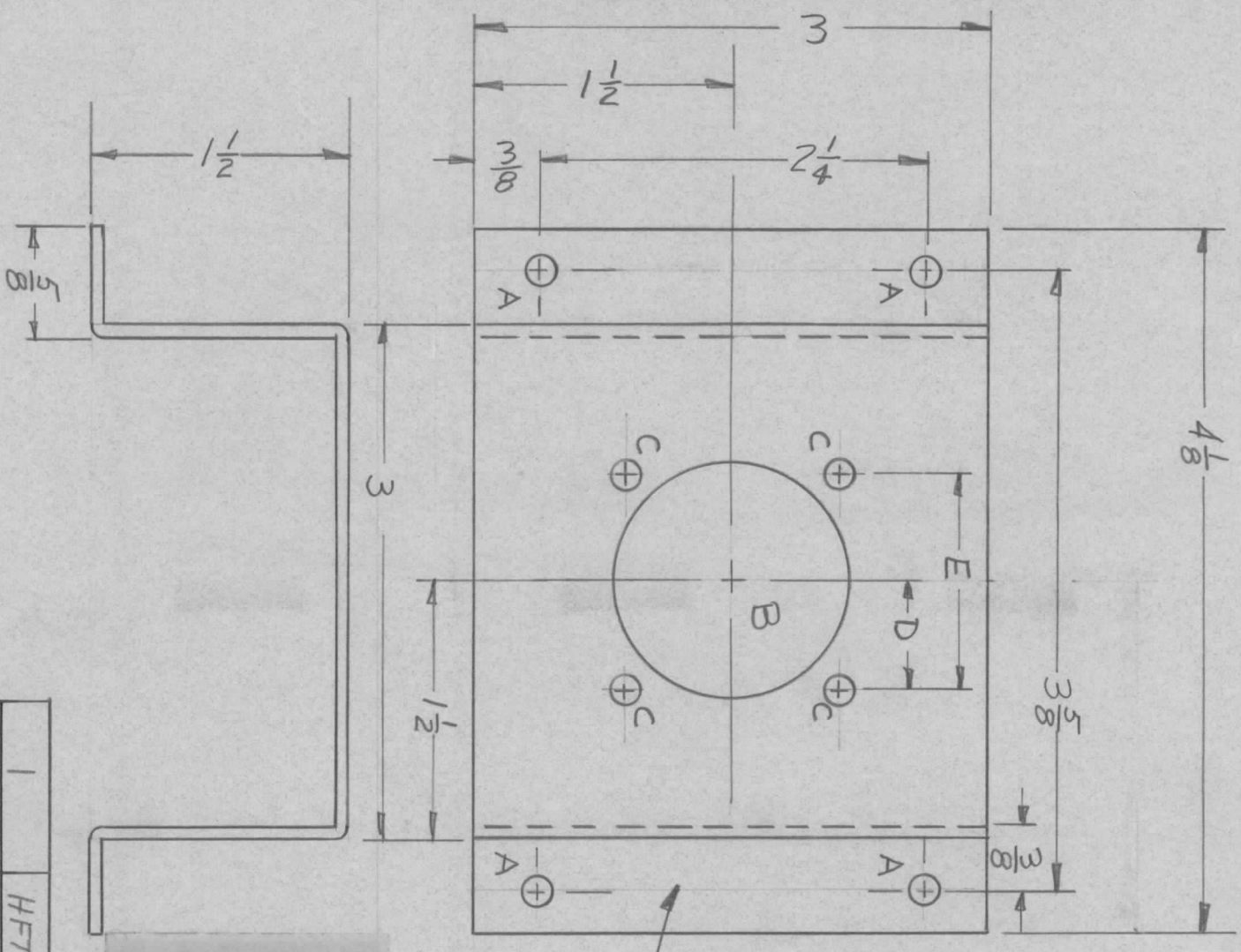
NOTICE TO PERSONS RECEIVING THIS DRAWING  
 THE TECHNICAL MATERIEL CORPORATION claims proprietary right in the material disclosed hereon. This drawing is issued in confidence for engineering information only and may not be reproduced or used to manufacture anything shown hereon without permission from THE TECHNICAL MATERIEL CORPORATION to the user. This drawing is loaned for mutual assistance and is subject to recall at any time.

THE TECHNICAL MATERIEL CORP.  
 MAMARONECK, NEW YORK

BRACKET, X MFR

REVISIONS							
ZONE	LTR	DESCRIPTION	DATE	E.M.N.NO	DRAFT	CHKD	APPD
	Ø	ORIG RELEASE FOR PROD	10/21/71		CV		

A ~ 1/16 DIA. 4 REQ.  
B ~ C ~ D ~ E SEE CHART



- UNLESS OTHERWISE SPECIFIED:
1. USE MATERIAL THICKNESS FOR MAXIMUM RADIUS ON ALL BENDS.
  2. ALL ANGULAR BENDS 90 DEGREES.
  3. REMOVE ALL BURRS AND SHARP EDGES.
  4. MOUNT INSERTS AFTER FINISHING.

P/N	HS3102A SIZE	B DIA	C DIA	D Dim	E Dim
HS6245-1	10	11/16	9/16	23/64	23/32
HS6245-2	12	13/16	9/16	13/32	13/16
HS6245-3	14	15/16	9/16	29/64	29/32
HS6245-4	16	1-1/16	9/16	31/64	31/32
HS6245-5	18	1-3/16	9/16	17/32	1-1/16
HS6245-6	20	1-5/16	9/16	37/64	1-5/32
HS6245-7	22	1-7/16	9/16	5/8	1-1/4
HS6245-8	24	1-9/16	11/16	11/16	1-3/8
HS6245-9	28	1-13/16	11/16	25/32	1-9/16
HS6245-10	32	2-1/16	11/16	7/8	1-3/4
HS6245-11	36	2-5/16	11/16	31/32	1-15/16

QTY / UNIT	1	MODEL USED ON	HFTA-1KJ2	ASSY NO.	RAK138-1A
APPLICATION					
CODE					

NOTICE TO PERSONS RECEIVING THIS DRAWING  
THE TECHNICAL MATERIEL CORPORATION claims proprietary right in the material disclosed hereon. This drawing is issued in confidence for engineering information only and may not be reproduced or used to manufacture anything shown hereon without permission from THE TECHNICAL MATERIEL CORPORATION to the user. This drawing is loaned for mutual assistance and is subject to recall at any time.

UNLESS OTHERWISE SPECIFIED DIMENSIONS ARE IN INCHES AND INCLUDE CHEMICALLY APPLIED OR PLATED FINISHES	DECIMALS	FRACTIONS
X ± .05	1/64	
.XX ± .01	TOLS.	ANGLES
.XXX ± .005		0° - 30'
MATERIAL	064 ALUM	
FINISH	5052-H32	
	S404 YEL IRID	

FINAL APPROVAL	DATE
MECH. DES.	10/21/71
ELECT. DES.	10/21/71
CHECKED	DATE
DRAWN	DATE

LIST OF MATERIAL

THE TECHNICAL MATERIEL CORP.  
MAMARONECK, NEW YORK

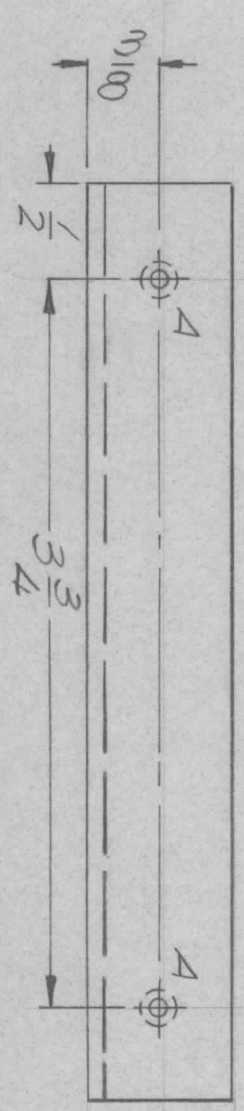
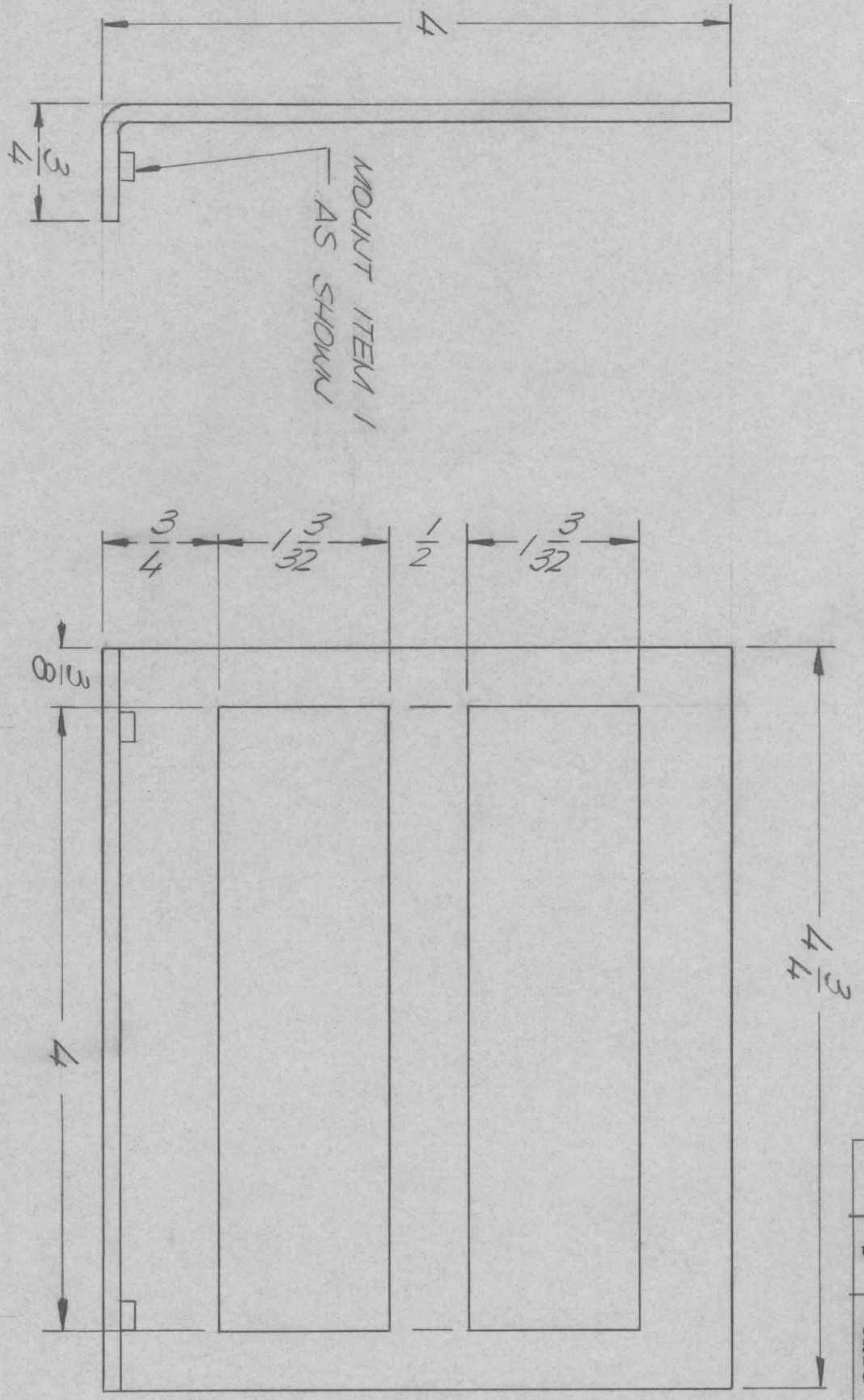
B R K T, C O N N M T G

REQ'D ITEM	PART NUMBER	DESCRIPTION	SYM.
SIZE	CODE IDENT. NO.	DWG NO.	ISSUE
B	82679	MS6245	Ø
SCALE		SHEET	OF



REVISIONS							
ZONE	LTR	DESCRIPTION	DATE	E.M.N. NO	DRAFT	CHKD	APPD
0		ORIG RELEASE FOR PROD	11/17/71		CV		

HOLE	DESCRIPTION	REQ.
A	.221-224 DIA.	2



REQ'D ITEM	PART NUMBER	DESCRIPTION	SYM.
2	1	KUT 129-06324 KUT PLY. SPLINE	A

LIST OF MATERIAL			
THE TECHNICAL MATERIEL CORP.			
MAMARONECK, NEW YORK			

FINAL APPROVAL	DATE
<i>[Signature]</i>	11-1-71
MECH. DES	DATE
<i>[Signature]</i>	10-7-71
ELECT. DES.	DATE
<i>[Signature]</i>	11/1/71
CHECKED	DATE
<i>[Signature]</i>	
DRAWN	DATE
GE	11/1/71

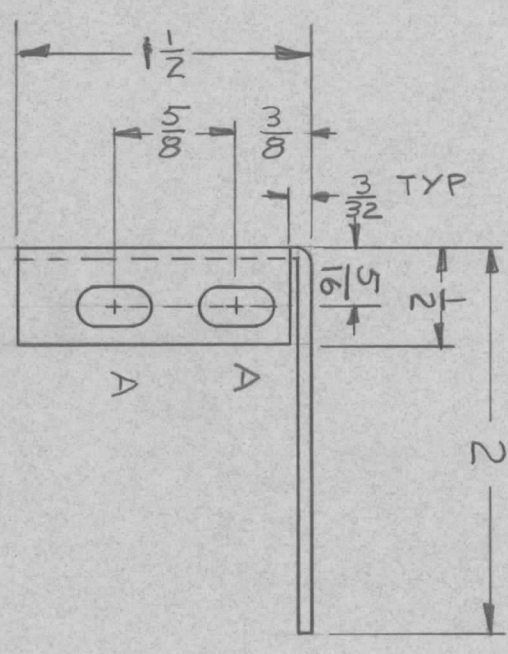
UNLESS OTHERWISE SPECIFIED DIMENSIONS ARE IN INCHES AND INCLUDE CHEMICALLY APPLIED OR PLATED FINISHES	DECIMALS	TOLS.	FRACTIONS	ANGLES
	.X ± .05	.01	1/64	0° - 30'
	.XX ± .01			
	.XXX ± .005			
MATERIAL	ALUM 5052H32			
FINISH	S404			
YEL. IRIDITE				

QTY / UNIT	1	LRCA 2	MODEL USED ON	ASS'Y NO.
APPLICATION				
CODE				

NOTICE TO PERSONS RECEIVING THIS DRAWING  
 THE TECHNICAL MATERIEL CORPORATION claims proprietary right in the material disclosed hereon. This drawing is issued in confidence for engineering information only and may not be reproduced or used to manufacture anything shown hereon without permission from THE TECHNICAL MATERIEL CORPORATION to the user. This drawing is loaned for mutual assistance and is subject to recall at any time.

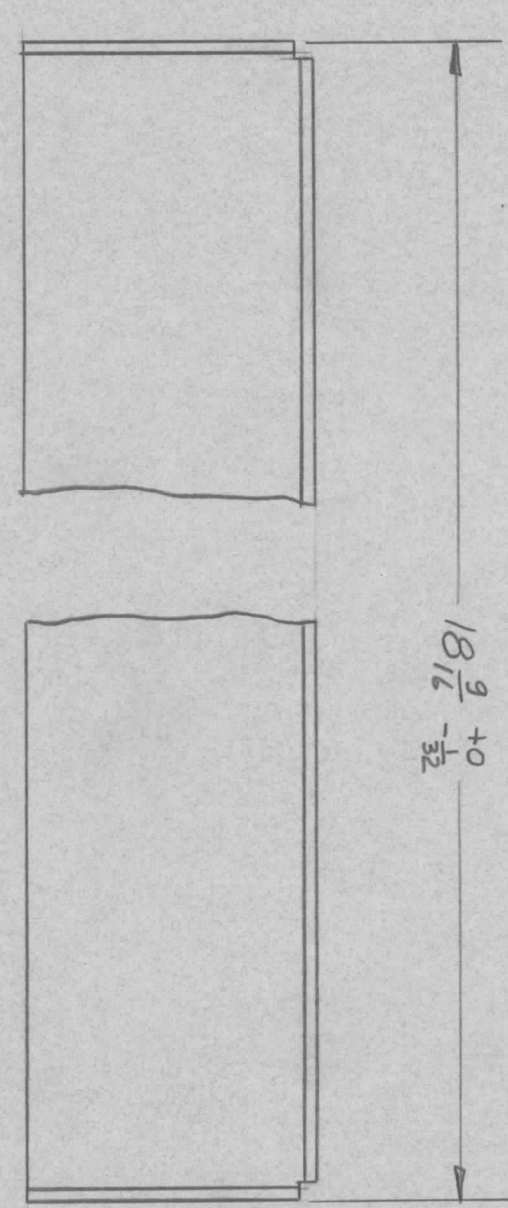
- UNLESS OTHERWISE SPECIFIED:
1. USE MATERIAL THICKNESS FOR MAXIMUM RADIUS ON ALL BENDS.
  2. ALL ANGULAR BENDS 90 DEGREES.
  3. REMOVE ALL BURRS AND SHARP EDGES.
  4. MOUNT INSERTS AFTER FINISHING.

REVISIONS							
ZONE	LTR	DESCRIPTION	DATE	E.M.N. NO	DRAFT	CHKD	APPD
Ø		ORIG RELEASE FOR PROD	1/13/70		CV		



OPP END IDENT

A ~ 3/16 x 3/8 SLOT 4 REQ'D



QTY / UNIT	16	SYM	1203	MODEL USED ON		ASS'Y NO.	
APPLICATION		CODE					

**NOTICE TO PERSONS RECEIVING THIS DRAWING**  
 THE TECHNICAL MATERIEL CORPORATION claims proprietary right in the material disclosed hereon. This drawing is issued in confidence for engineering information only and may not be reproduced or used to manufacture anything shown hereon without permission from THE TECHNICAL MATERIEL CORPORATION to the user. This drawing is loaned for mutual assistance and is subject to recall at any time.

UNLESS OTHERWISE SPECIFIED DIMENSIONS ARE IN INCHES AND INCLUDE CHEMICALLY APPLIED OR PLATED FINISHES	DECIMALS	FRACTIONS
.X ± .05	1/64	ANGLES
.XX ± .01		0° - 30°
.XXX ± .005		

MATERIAL .064 ALUM  
 5052-H32  
 FINISH  
 S404 YEL IRID

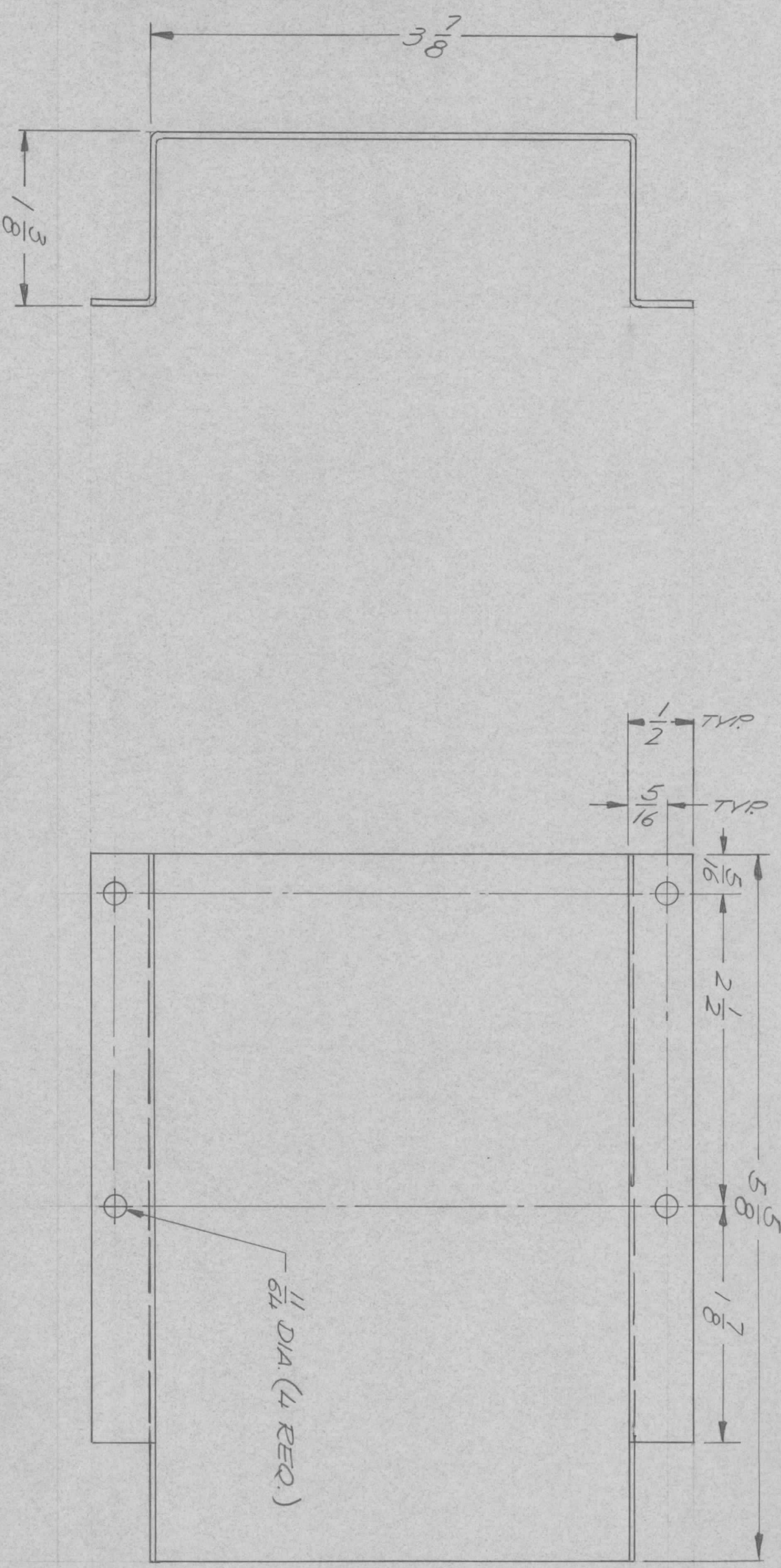
REQ'D ITEM	PART NUMBER	DESCRIPTION	SYM.
------------	-------------	-------------	------

FINAL APPROVAL	DATE	MECH. DES.	DATE	ELECT. DES.	DATE
<i>[Signature]</i>	6/26/71	<i>[Signature]</i>	6/26/71		
CHECKED	DATE	DRAWN	DATE		
<i>[Signature]</i>	6/26/71	<i>[Signature]</i>	6/26/71		

LIST OF MATERIAL  
 THE TECHNICAL MATERIEL CORP.  
 MAMARONECK, NEW YORK  
 SHELF EQUIP SUPT

SIZE	CODE IDENT. NO.	DWG NO.	ISSUE
B	82679	MS 6260	Ø
SCALE		SHEET	OF

REVISIONS							
ZONE	LTR	DESCRIPTION	DATE	E.M.N.NO	DRAFT	CHKD	APPD
	Ø	ORIG RELEASE FOR PROD	10/29/72		CV		



QTY / UNIT	1	MODEL USED ON	METRIORKE-5	ASS'Y NO.	AX 5141
APPLICATION					
CODE					

NOTICE TO PERSONS RECEIVING THIS DRAWING  
 THE TECHNICAL MATERIEL CORPORATION claims proprietary right in the material disclosed hereon. This drawing is issued in confidence for engineering information only and may not be reproduced or used to manufacture anything shown hereon without permission from THE TECHNICAL MATERIEL CORPORATION to the user. This drawing is loaned for mutual assistance and is subject to recall at any time.

UNLESS OTHERWISE SPECIFIED DIMENSIONS ARE IN INCHES AND INCLUDE CHEMICALLY APPLIED OR PLATED FINISHES	
DECIMALS	FRACTIONS
X ± .05	1/64
XX ± .01	TOLS. ANGLES
.XXX ± .005	0° - 30'
MATERIAL	.063
FINISH	ALUM 5052 H32
	SL04 YEL IRDITE

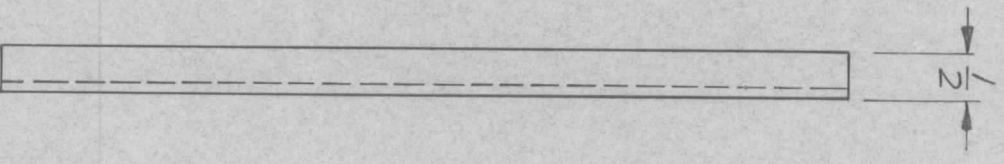
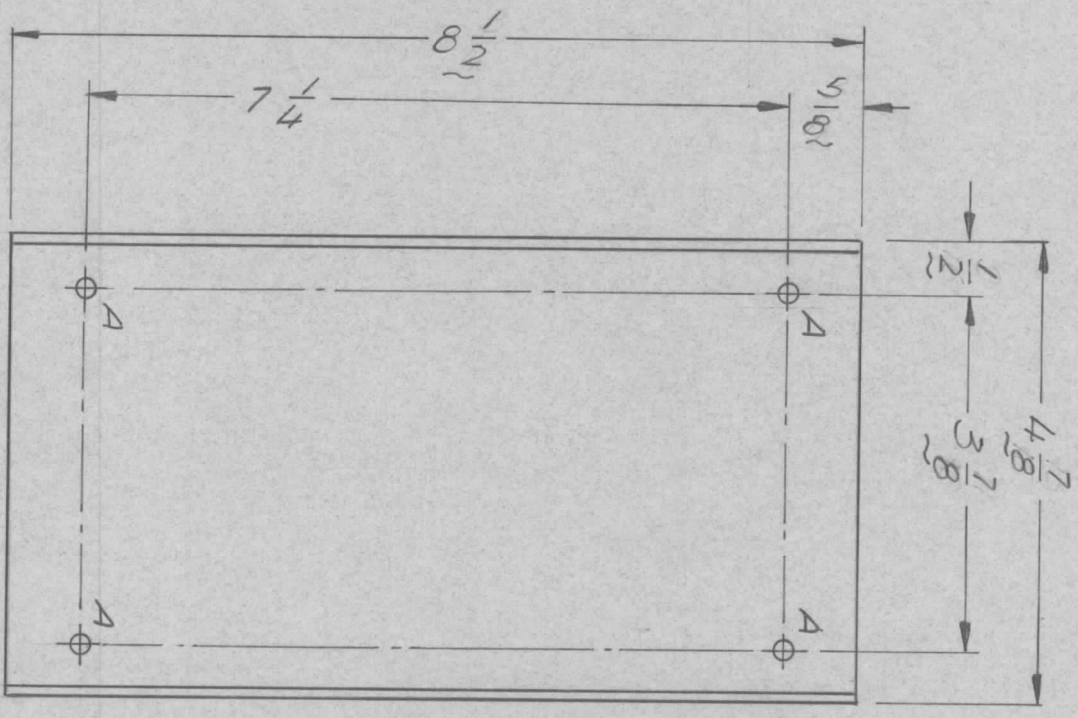
REQ'D ITEM	PART NUMBER	DESCRIPTION	SYM.
LIST OF MATERIAL			
THE TECHNICAL MATERIEL CORP.			
MAMARONECK, NEW YORK			

FINAL APPROVAL	DATE
MECH. DES.	DATE
ELECT. DES.	DATE
CHECKED	DATE
DRAWN	DATE

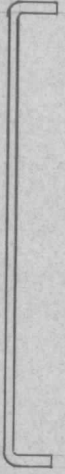
SIZE	CODE IDENT. NO.	DWG NO.	ISSUE
B	82679	MS 6263	Ø
SCALE	1:1	SHEET	OF

MAMARONECK MACH CO

REVISIONS							
ZONE	LTR	DESCRIPTION	DATE	E.M.N. NO	DRAFT	CHKD	APPD
	Ø	ORIG RELEASE FOR PROD	8/6/72		CV		



HOLE	DESCRIPTION	REQ.
A	7/32 DIA.	4



QTY / UNIT	2	MODEL USED ON	MAT-5	ASS'Y NO.	B74-474
APPLICATION					
CODE					

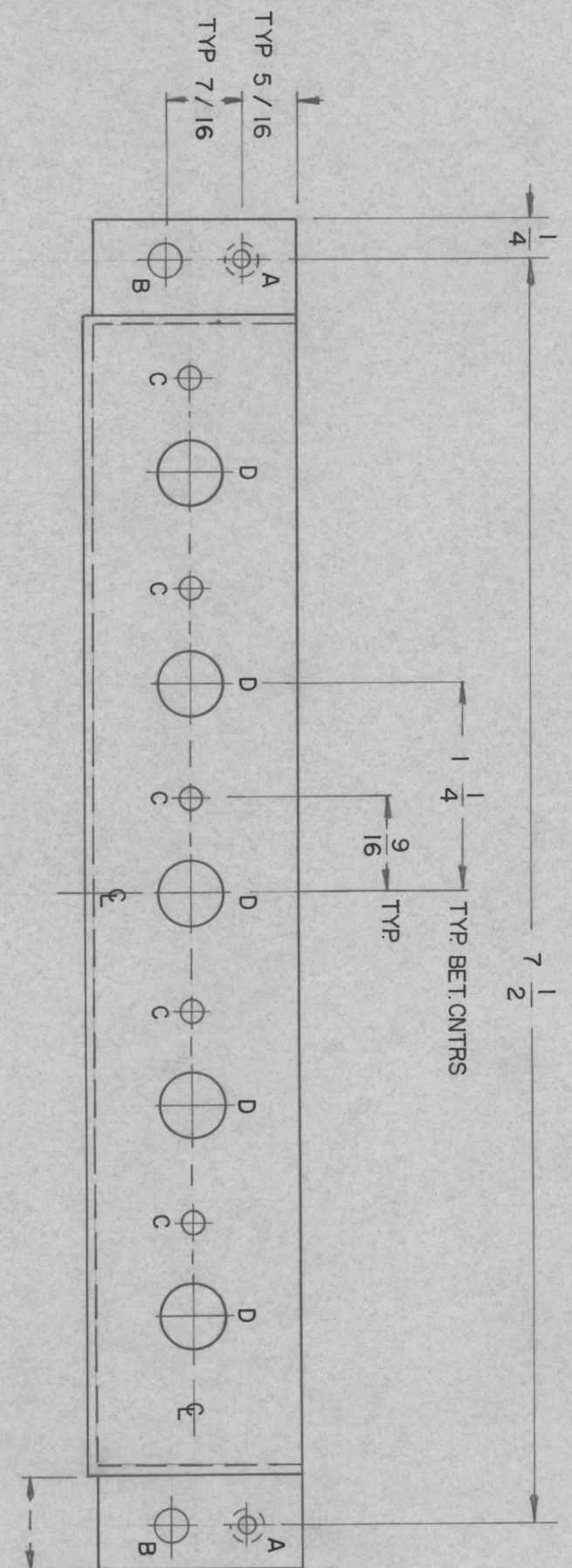
**NOTICE TO PERSONS RECEIVING THIS DRAWING**  
 THE TECHNICAL MATERIEL CORPORATION claims proprietary right in the material disclosed hereon. This drawing is issued in confidence for engineering information only and may not be reproduced or used to manufacture anything shown hereon without permission from THE TECHNICAL MATERIEL CORPORATION to the user. This drawing is loaned for mutual assistance and is subject to return to the user.

UNLESS OTHERWISE SPECIFIED DIMENSIONS ARE IN INCHES AND INCLUDE CHEMICALLY APPLIED OR PLATED FINISHES	DECIMALS .X ± .05 .XX ± .01 .XXX ± .005	TOLS. 1/64 ANGLES 0° .30'	FRACTIONS
MATERIAL	5052 H32		
FINISH	5104 YEL ROTE		

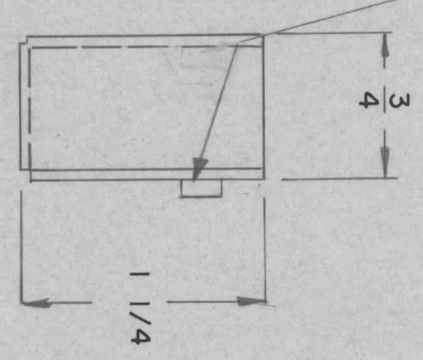
REQ'D ITEM	PART NUMBER	DESCRIPTION	SYM.
LIST OF MATERIAL			
THE TECHNICAL MATERIEL CORP. MAMARONECK, NEW YORK			
SIDE PLATE			
SIZE	CODE IDENT. NO.	DWG NO.	ISSUE
B	82679	MS 6264	Ø
SCALE	1/2	SHEET	OF

FINAL APPROVAL	DATE
Mech. Des. <i>[Signature]</i>	2/10/71
ELECT. DES.	DATE
Checked <i>[Signature]</i>	10/1/71
Drawn <i>[Signature]</i>	9/17/71

REVISIONS							
ZONE	LTR	DESCRIPTION	DATE	E.M.N.NO	DRAFT	CHKD	APPD
0	0	ORIG RELEASE FOR PROD	9/29/72		CV		



MOUNT AS SHOWN (1)



HOLE	DESCRIPTION	REQ
A	.161 - .164 D.	2
B	3/16 D.	2
C	1/8 D.	5
D	3/8 D.	5

REQ'D ITEM	PART NUMBER	DESCRIPTION	SYM.
2	1	TE 108-6 STANDARD RIVET, TYPE	Δ

LIST OF MATERIAL  
**THE TECHNICAL MATERIEL CORP.**  
 MAMARONECK, NEW YORK

QTY / UNIT	1	MFTR IOKE-5	ASSY NO.	BMA 481
MODEL USED ON		APPLICATION		
CODE				

**NOTICE TO PERSONS RECEIVING THIS DRAWING**  
 THE TECHNICAL MATERIEL CORPORATION claims proprietary right in the material disclosed hereon. This drawing is issued in confidence for engineering information only and may not be reproduced or used to manufacture anything shown hereon without permission from THE TECHNICAL MATERIEL CORPORATION to the user. This drawing is loaned for mutual assistance and is subject to recall at any time.

DECIMALS	FRACTIONS
.X ± .05	1/64
.XX ± .01	ANGLES
.XXX ± .005	0° - 30'

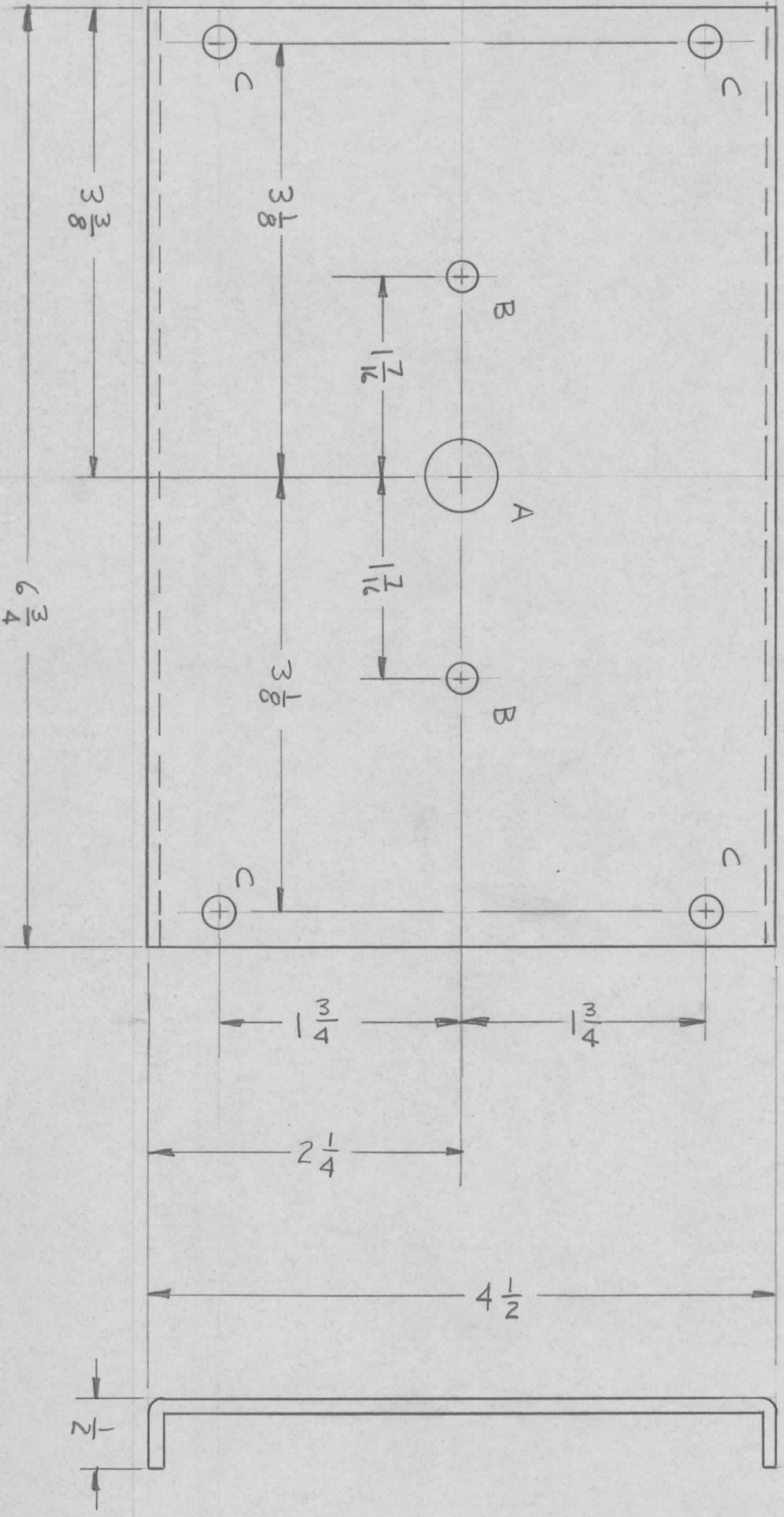
MATERIAL  
 .063 ALUM 5052 H32  
 FINISH  
 S 404  
 YELLOW IRIDITE

FINAL APPROVAL	MECH. DES.	ELECT. DES.	CHECKED	DRAWN
			GE	GE

DATE	28 Feb 72
DATE	10/6/71
DATE	8/30/71

SIZE	B	CODE IDENT. NO.	82679	DWG NO.	M56265	ISSUE	Φ
SCALE	1-1	SHEET		OF		1	

REVISIONS				DESCRIPTION	DATE	APPROVED
EMN NO.	DRAFT	CHKD	ZONE	LTR	ORIG RELEASE FOR PROD	
	CV			0		
					3/6/72	



A ~ 1/2 DIA 1 REQA'D  
 B ~ 13/64 DIA 2 REQA'D  
 C ~ 7/32 DIA 4 REQA'D

UNLESS OTHERWISE SPECIFIED:

1. USE MATERIAL THICKNESS FOR MAXIMUM RADIUS ON ALL BENDS.
2. ALL ANGULAR BENDS 90 DEGREES.
3. REMOVE ALL BURRS AND SHARP EDGES.
4. MOUNT INSERTS AFTER FINISHING.

QTY / UNIT	1	MODEL USED ON	MAT-5	ASS'Y NO.	BMA 477
APPLICATION					
CODE					

NOTICE TO PERSONS RECEIVING THIS DRAWING  
 THE TECHNICAL MATERIEL CORPORATION claims proprietary right in the material disclosed hereon. This drawing is issued in confidence for engineering information only and may not be reproduced or used to manufacture anything shown hereon without permission from THE TECHNICAL MATERIEL CORPORATION to the user. This drawing is loaned for mutual assistance and is subject to recall at any time.

UNLESS OTHERWISE SPECIFIED  
 DIMENSIONS ARE IN INCHES  
 AND INCLUDE CHEMICALLY APPLIED  
 OR PLATED FINISHES

DECIMALS	FRACTIONS	ANGLES
X ± .05	1/64	0° - 30'
.XX ± .01		
.XXX ± .005		
MATERIAL	5052-H32	
FINISH	S404 YEL IRID	

REQ'D	ITEM	PART NUMBER	DESCRIPTION	SYM.
			LIST OF MATERIAL	

THE TECHNICAL MATERIEL CORP.  
 MAMARONECK, NEW YORK

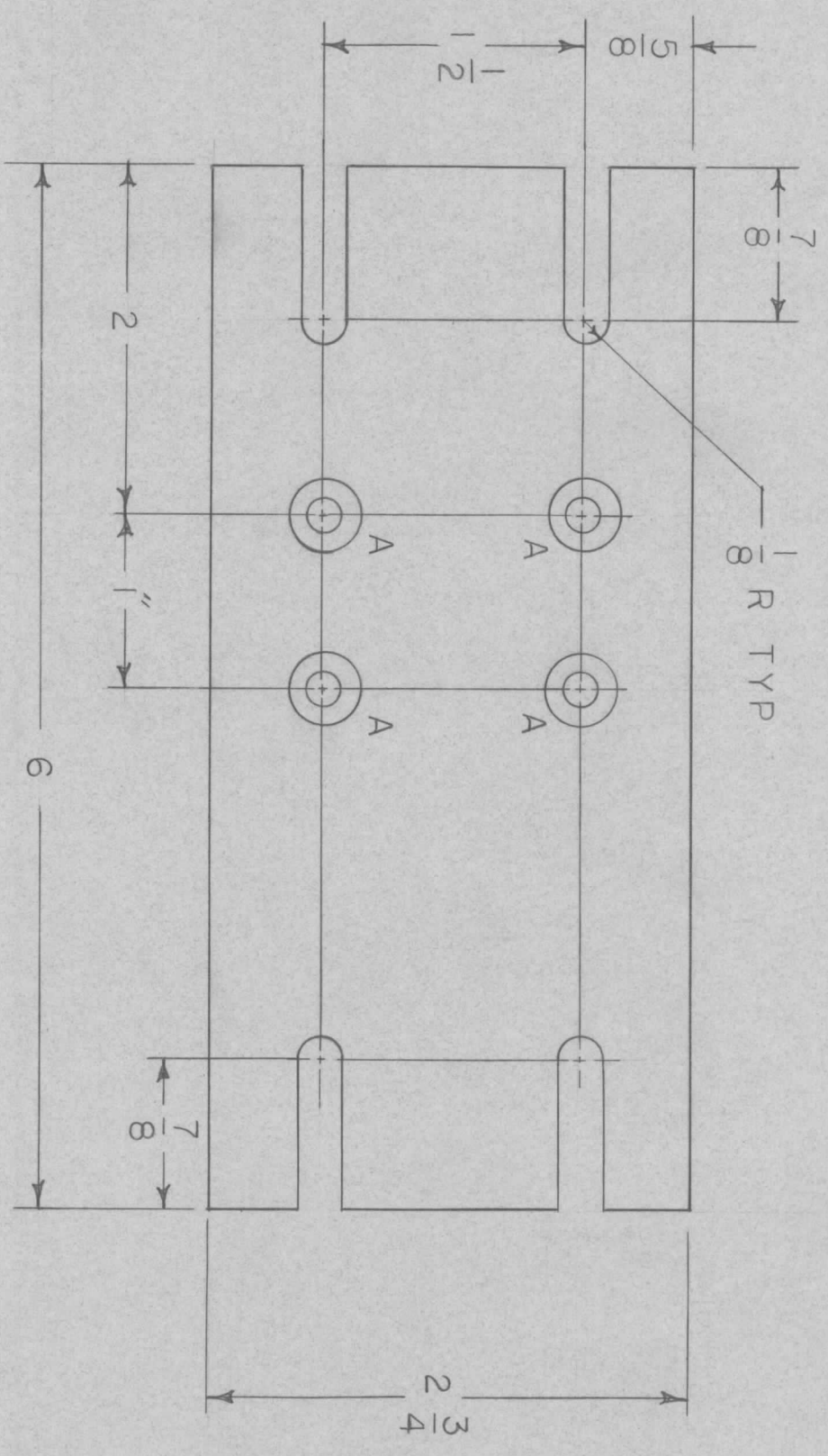
PLATE, STABILIZER

FINAL APPROVAL	DATE	MECH. DES.	DATE	ELECT. DES.	DATE	DRAWN	DATE
	3/16/72		2/26/72				2/26/72
CHECKED	DATE	CHECKED	DATE	CHECKED	DATE	CHECKED	DATE
SIZE	CODE IDENT. NO.	DWG NO.	SCALE	SHEET	OF	ISSUE	
B	82679	M56266				1	

REVISIONS

ZONE	LTR	DESCRIPTION	DATE	E.M.N.NO	DRAFT	CHKD	APPD
Ø		ORIG RELEASE FOR PROD	3/6/72		CO		

HOLE	DESCRIPTION	REQD
A	10-32 C'SINK	4



NOTE:  
1. C'SINK SIDE SHOWN ONLY.

REQ'D ITEM	PART NUMBER	DESCRIPTION	SYM.
FB		LIST OF MATERIAL	

THE TECHNICAL MATERIEL CORP.  
MAMARONECK, NEW YORK

PLATE, MTG.

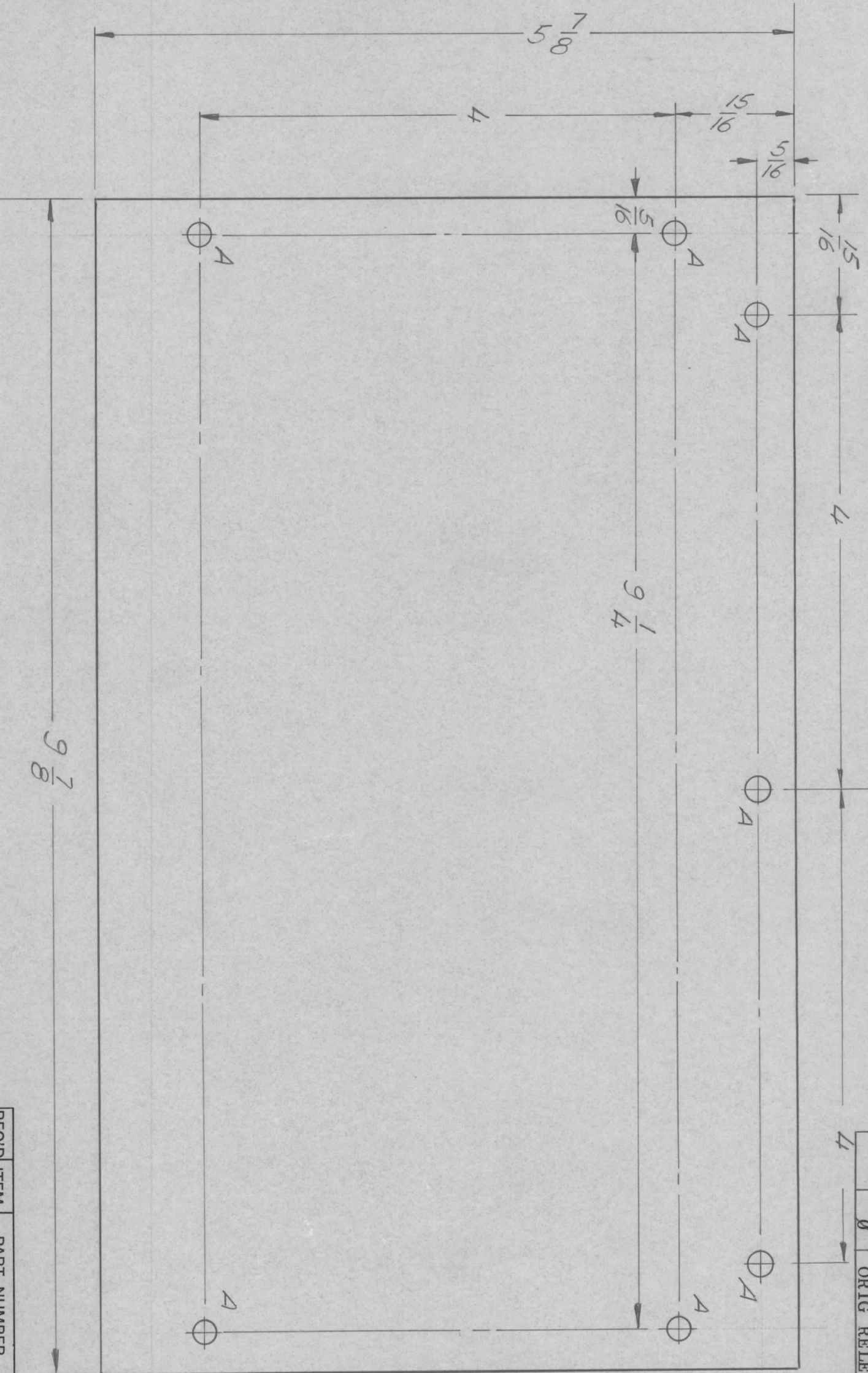
FINAL APPROVAL	DATE	SIZE	CODE IDENT. NO.	DWG NO.	ISSUE
<i>[Signature]</i>	3/14/71	B	82679	MS 6267	Ø
Mech. Des.	DATE	SCALE			
<i>[Signature]</i>	3/14/71	1/1			
ELECT. DES.	DATE	SHEET			
		1			
CHECKED	DATE	OF			
		1			
DRAWN	DATE				
R. FORLANO	9/14/71				

UNLESS OTHERWISE SPECIFIED DIMENSIONS ARE IN INCHES AND INCLUDE CHEMICALLY APPLIED OR PLATED FINISHES		
DECIMALS	FRACTIONS	
.X ± .05	1/64	
.XX ± .01	TOLS.	
.XXX ± .005	ANGLES	
	90° .30'	
MATERIAL 1/8 THK ALUM 5052-H32		
FINISH S404 IRIDITE		
QTY / UNIT	MAT-5	B44-413
1	MFT-R10KE-5	B44-484
MODEL USED ON		ASS'Y NO.
APPLICATION		
CODE		

NOTICE TO PERSONS RECEIVING THIS DRAWING  
THE TECHNICAL MATERIEL CORPORATION claims proprietary right in the material disclosed hereon. This drawing is issued in confidence for engineering information only and may not be reproduced or used to manufacture anything shown hereon without permission from THE TECHNICAL MATERIEL CORPORATION to the user. This drawing is loaned for mutual assistance and is subject to recall at any time.

REVISIONS				
ZONE	LTR	DESCRIPTION	DATE	E.M.N. NO
	Ø	ORIG RELEASE FOR PROD	3/6/72	

HOLE DESCRIPTION REQ  
A - 3/16 DIA. - 7



REQ'D ITEM	PART NUMBER	DESCRIPTION	SYM.
	BUDETT1	LIST OF MATERIAL	

UNLESS OTHERWISE SPECIFIED DIMENSIONS ARE IN INCHES AND INCLUDE CHEMICALLY APPLIED OR PLATED FINISHES		FINAL APPROVAL	
DECIMALS	FRACTIONS	MECH. DES.	DATE
.X ± .05	1/64	<i>[Signature]</i>	3/16/72
.XX ± .01	ANGLES	ELECT. DES.	DATE
.XXX ± .005	0° - 30'	CHECKED	DATE
		DRAWN	DATE
		GE	9/1/71

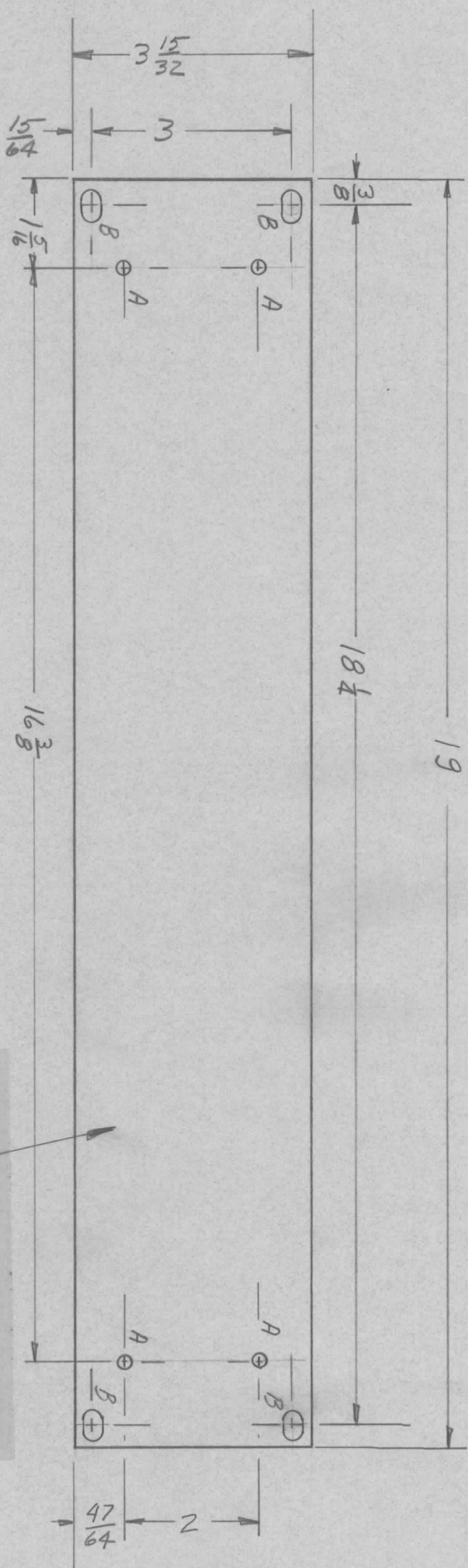
QTY / UNIT	MODEL USED ON	ASS'Y NO.
1	MAT-5	BHR-476
APPLICATION		
CODE		

FINISH	5052 H32	SIZE	CODE IDENT. NO.	DWG NO.	ISSUE
YELLOW IRIDIOTE		B	82679	MS 6268	Ø
MATERIAL 063 ALUM.		SCALE	1:1		
COVER - PLATE		SHEET 1 OF 1			

NOTICE TO PERSONS RECEIVING THIS DRAWING  
THE TECHNICAL MATERIEL CORPORATION claims proprietary right in the material disclosed hereon. This drawing is issued in confidence for engineering information only and may not be reproduced or used to manufacture anything shown hereon without permission from THE TECHNICAL MATERIEL CORPORATION to the user. This drawing is loaned for mutual assistance and is subject to recall at any time.



REVISIONS							
ZONE	LTR	DESCRIPTION	DATE	E.M.N. NO	DRAFT	CHKD	APPD
	Ø	ORIG RELEASE FOR PROD	1/15/79			CJ	



*A ~ 1/8 DIA 4 REQ'D*  
*B ~ 1/4 X 1/2 SLOT 4 REQ'D*

**FINISH NOTES:**

1. S404 - IRIDITE 14-2 AL-COAT.
  2. S114 - ZINC CHROMATE PRIMER
  3. S115 - SMOOTH GRAY ENAMEL
- OR  
 PRIME AND PAINT PER CUSTOMER'S SPECIFICATIONS
- FRONT AND  
EDGES ONLY

QTY / UNIT	1	MODEL USED ON	SYH 1203	ASS'Y NO.	AX5159
APPLICATION		CODE			

**NOTICE TO PERSONS RECEIVING THIS DRAWING**  
 THE TECHNICAL MATERIEL CORPORATION claims proprietary right in the material disclosed hereon. This drawing is issued in confidence for engineering information only and may not be reproduced or used to manufacture anything shown hereon without permission from THE TECHNICAL MATERIEL CORPORATION to the user. This drawing is loaned for mutual assistance and is subject to recall at any time.

UNLESS OTHERWISE SPECIFIED DIMENSIONS ARE IN INCHES AND INCLUDE CHEMICALLY APPLIED OR PLATED FINISHES	
DECIMALS .X ± .05 .XX ± .01 .XXX ± .005	FRACTIONS 1/64 ANGLES 0° - 30'
MATERIAL 316 ALUW	FINISH 2024-T3
SEE NOTE	

REQ'D ITEM	PART NUMBER	DESCRIPTION	SYM.
LIST OF MATERIAL			
THE TECHNICAL MATERIEL CORP. MAMARONECK, NEW YORK			
PANEL, FRONT			

FINAL APPROVAL	DATE	DATE	DATE
MECH. DES.	DATE	DATE	DATE
ELECT. DES.	DATE	DATE	DATE
CHECKED	DATE	DATE	DATE
DRAWN	DATE	DATE	DATE
SIZE	CODE IDENT. NO.	DWG. NO.	ISSUE
B	82679	MS 6294	Ø
SCALE	SHEET	OF	