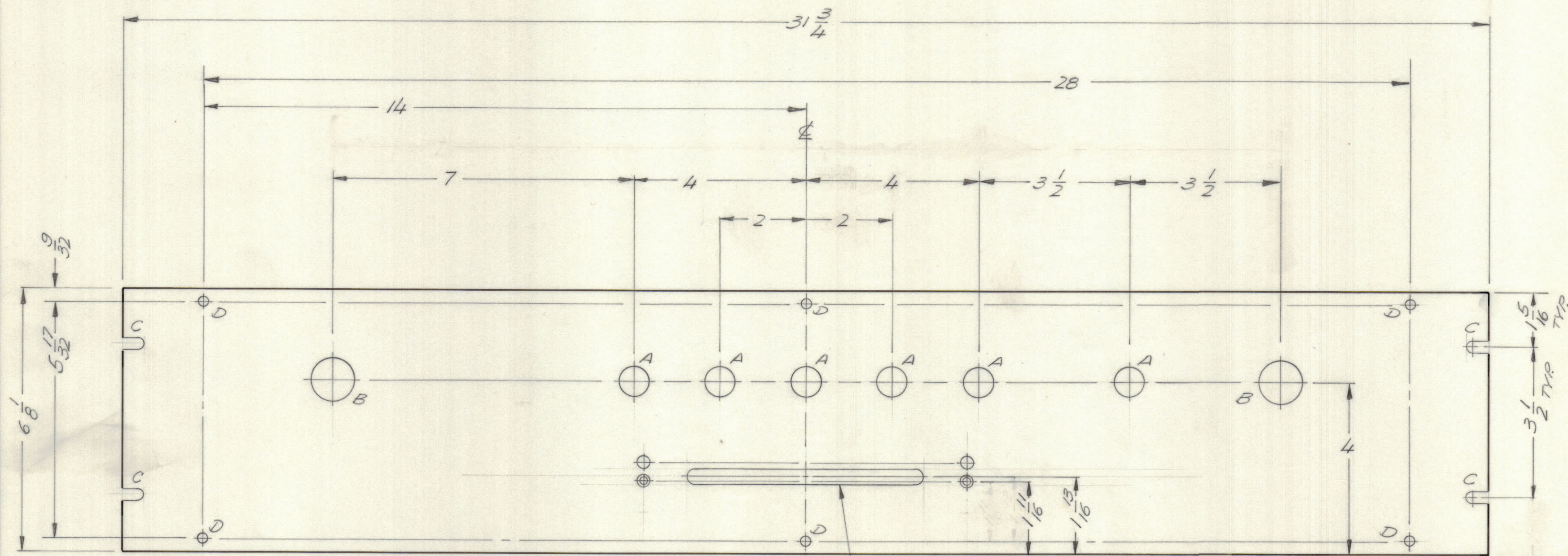
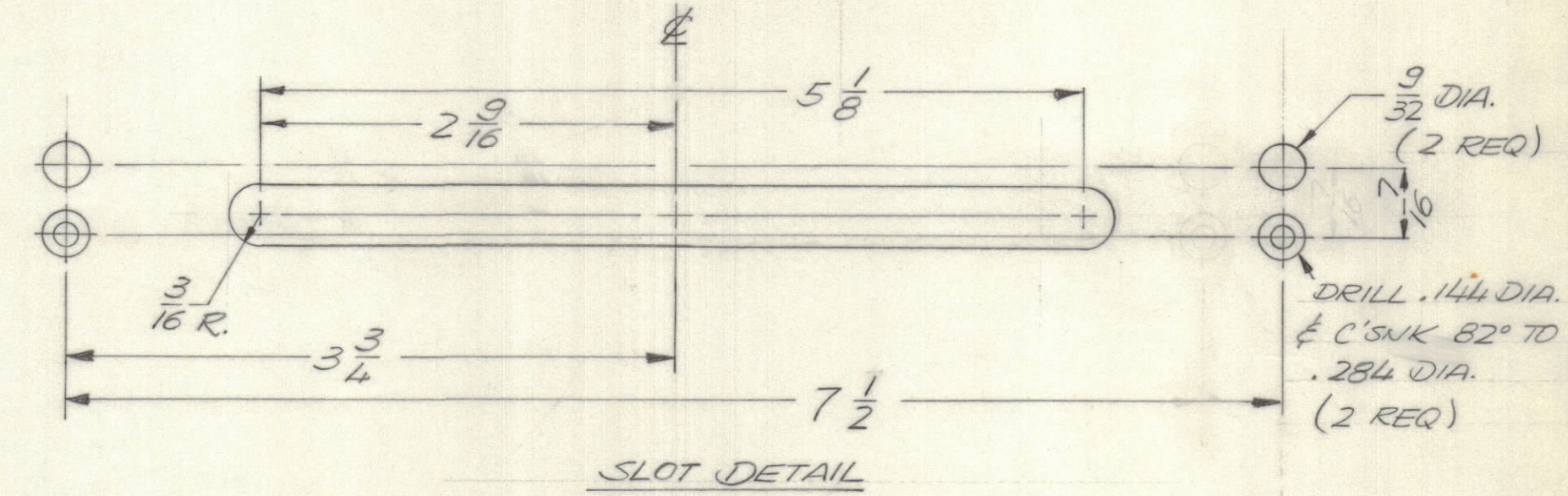
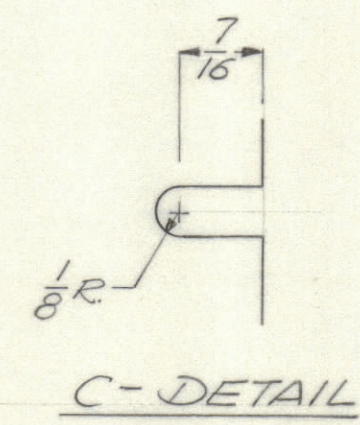


REVISIONS							
E.M.N.O	DRAFT	CHKD	ZONE	LTR	DESCRIPTION	DATE	APPROVED
	Gr			Ø	ORIGINAL RELEASE FOR PRODUCTION	2/29/72	



HOLE DESCRIPTION REQ.

A	11/16 DIA.	6
B	1" DIA.	2
C	SEE DETAIL	4
D	7/32 DIA.	6



**FINISH NOTES:**

- S404 - IRIDITE 14-2 AL-COAT.
- S114 - ZINC CHROMATE PRIMER
- S115 - SMOOTH GRAY ENAMEL

FRONT AND EDGES ONLY  
PRIME AND PAINT PER CUSTOMER'S SPECIFICATIONS

MTR IOKE-5		BMA 481
QTY / UNIT	MODEL USED ON	ASS'Y NO.
APPLICATION		
CODE		
NOTICE TO PERSONS RECEIVING THIS DRAWING		
THE TECHNICAL MATERIEL CORPORATION claims proprietary right in the material disclosed herein. This drawing is issued in confidence for engineering information only and may not be reproduced or used to manufacture anything shown hereon without permission from THE TECHNICAL MATERIEL CORPORATION to the user. This drawing is loaned for mutual assistance and is subject to recall at any time.		

REF. LD 2494		E.B.		LIST OF MATERIAL	
UNLESS OTHERWISE SPECIFIED DIMENSIONS ARE IN INCHES AND INCLUDE CHEMICALLY APPLIED OR PLATED FINISHES		FINAL APPROVAL	DATE	THE TECHNICAL MATERIEL CORP.	
TOLERANCES ON		MECH. DES.	DATE	MAMARONECK, NEW YORK	
DECIMALS	FRACTIONS	ELECT. DES.	DATE	PANEL, FRONT	
.X ± .05	± 1/64	CHECKED	DATE	SIZE	CODE IDENT NO. DWG NO.
.XX ± .01	ANGLES	DRAWN	DATE	C	82679 MS 6293
.XXX ± .005	± 0° -30'	MATERIAL 1/8 ALUM		SCALE 1/2	ISSUE
FINISH AS NOTED		5052 H32		SHEET OF	