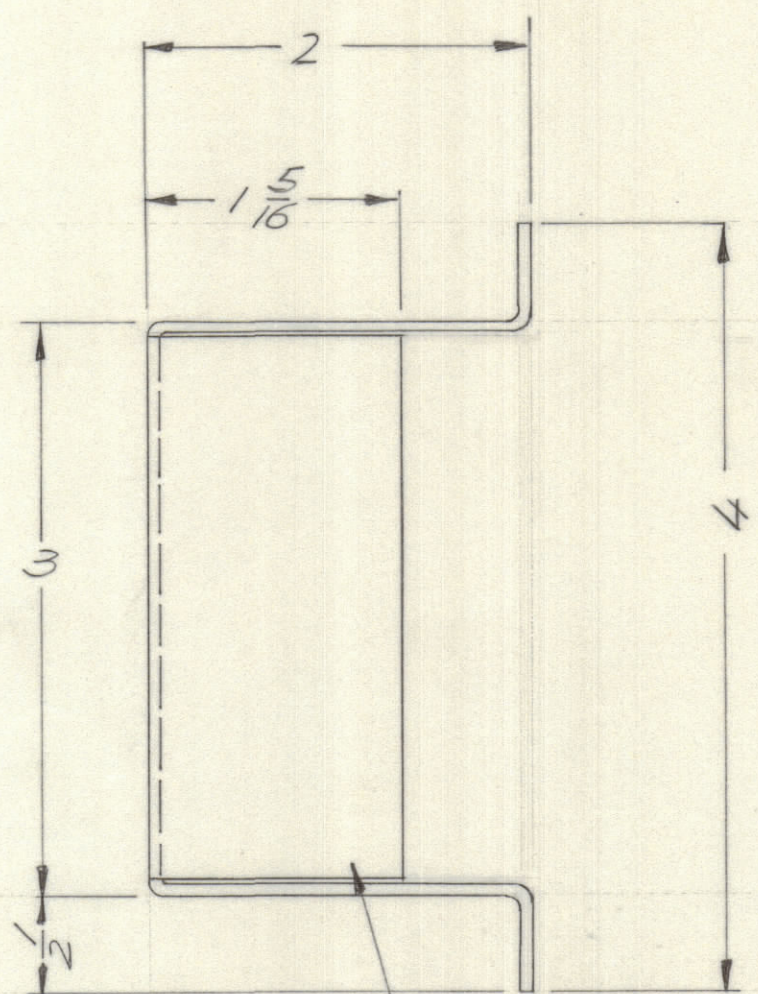
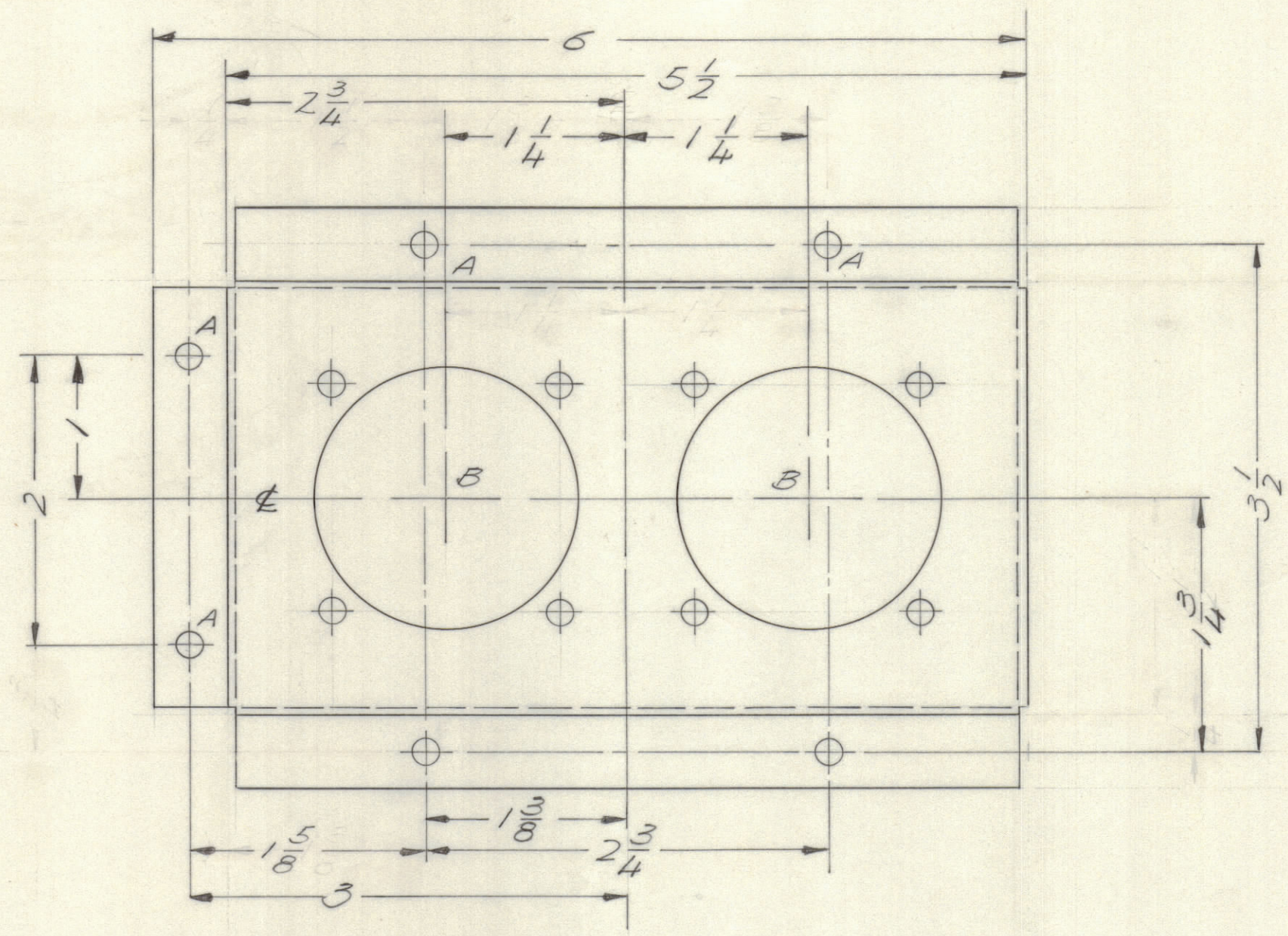
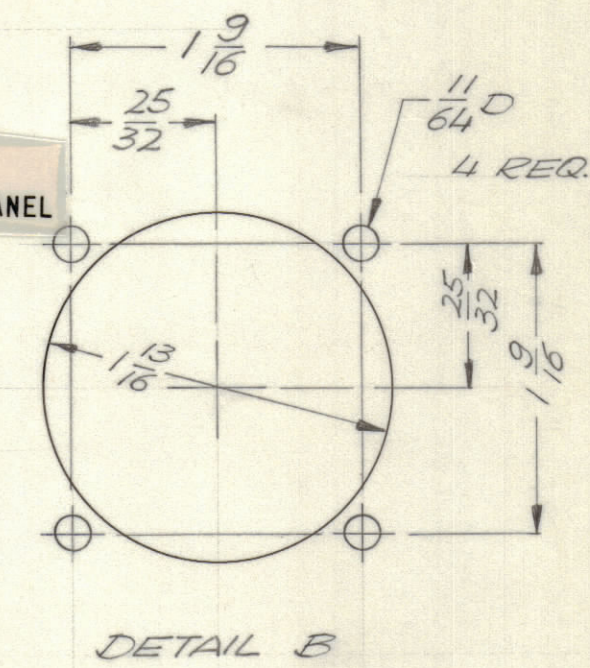


REVISIONS							
E.M.N.O	DRAFT	CHKD	ZONE	LTR	DESCRIPTION	DATE	APPROVED
	0			Ø	ORIGINAL RELEASE FOR PRODUCTION	1/8/72	



MARK TMC PART NUMBER  
1/8 HIGH GOTHIC WITH LATEST  
REVISION LETTER ON REAR OF PANEL

HOLE DESCRIPTION	REQ.
A — 11/64 DIA.	6
B — SEE DETAIL	2



OPPOSITE SIDE IDENTICAL

1	MFTR-10KES	AX5142
QTY / UNIT	MODEL USED ON	ASS'Y NO.
APPLICATION		
CODE		

NOTICE TO PERSONS RECEIVING THIS DRAWING  
THE TECHNICAL MATERIEL CORPORATION claims proprietary right in the material disclosed hereon. This drawing is issued in confidence for engineering information only and may not be reproduced or used to manufacture anything shown hereon without permission from THE TECHNICAL MATERIEL CORPORATION to the user. This drawing is loaned for mutual assistance and is subject to recall at any time.

REF ID 2496  
UNLESS OTHERWISE SPECIFIED  
DIMENSIONS ARE IN INCHES  
AND INCLUDE CHEMICALLY APPLIED  
OR PLATED FINISHES

TOLERANCES ON  
DECIMALS      FRACTIONS  
.X ± .05            ± 1/64  
.XX ± .01            ANGLES  
.XXX ± .005        ± 0° -30'

MATERIAL .064 ALUM  
5052 H32  
FINISH S404  
YEL IRIDITE

QTY. REQ.	ITEM	PART NO.	DESCRIPTION	SYMBOL
F. BUDETTI LIST OF MATERIAL				
THE TECHNICAL MATERIEL CORP. MAMARONECK, NEW YORK				
BRACKET MTG CONNECTOR				
SIZE	CODE IDENT NO.	DWG NO.	ISSUE	
C	82679	MS 6291	Ø	
SCALE 1:1	SHEET			OF

MS 6291