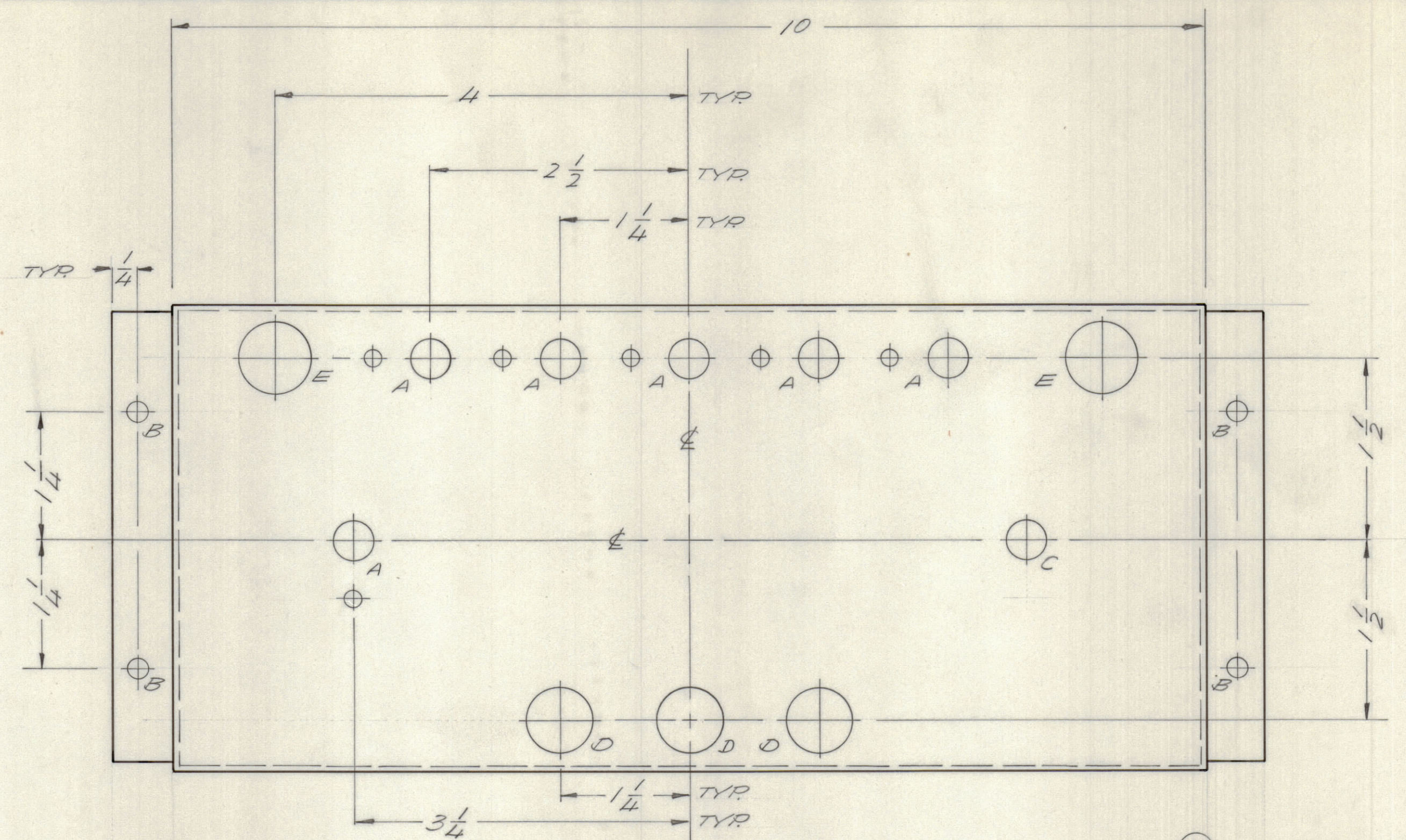


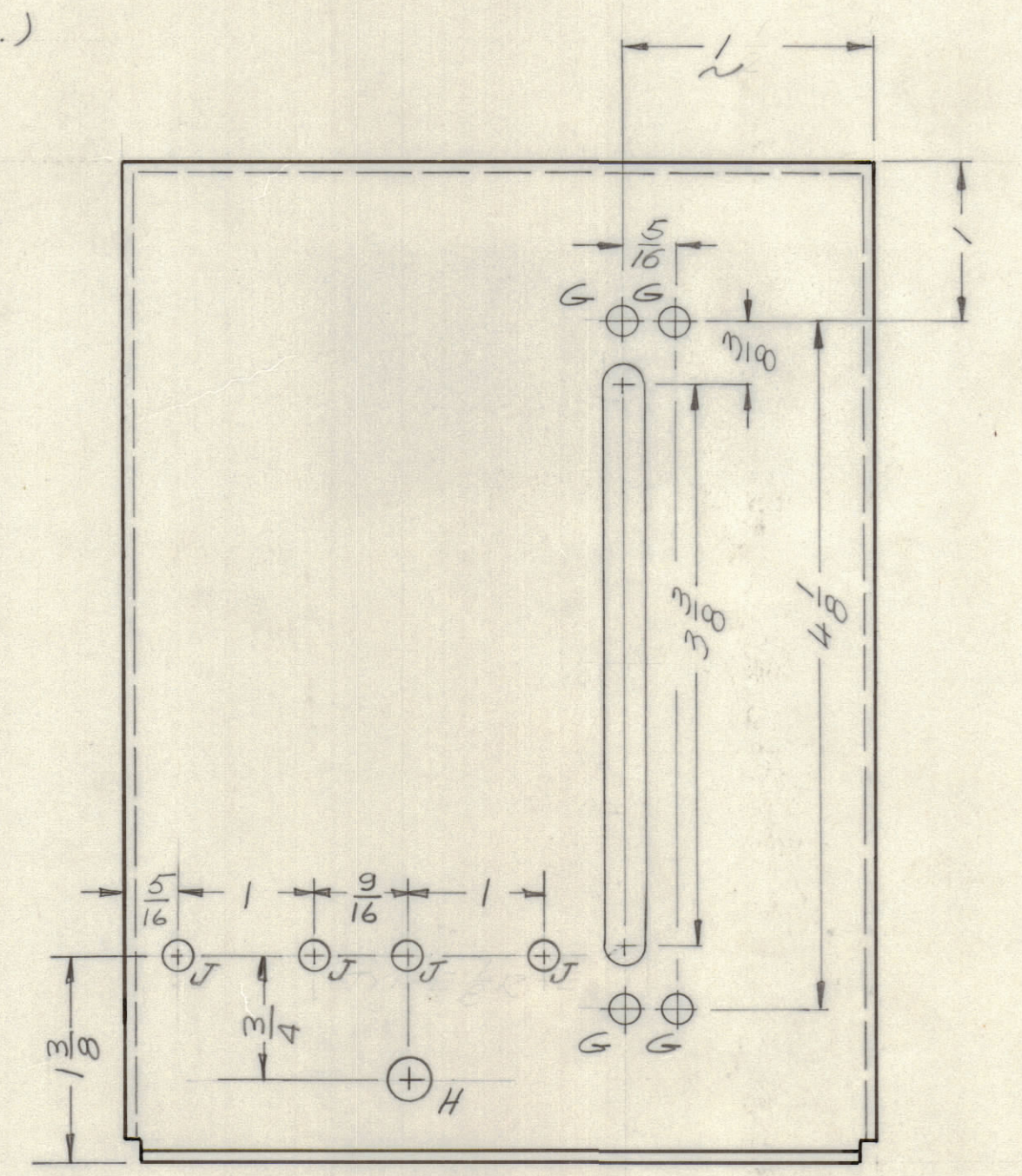
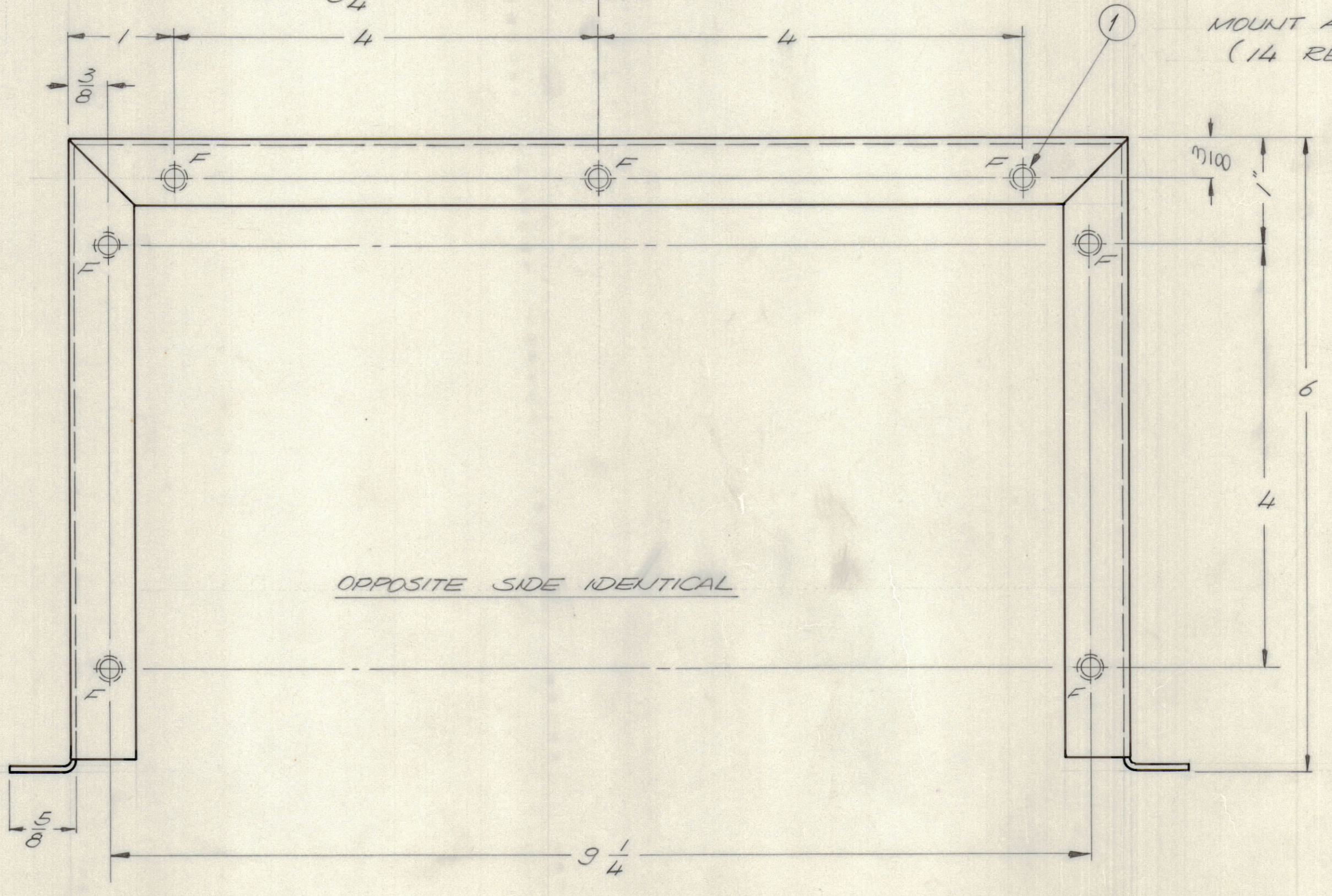
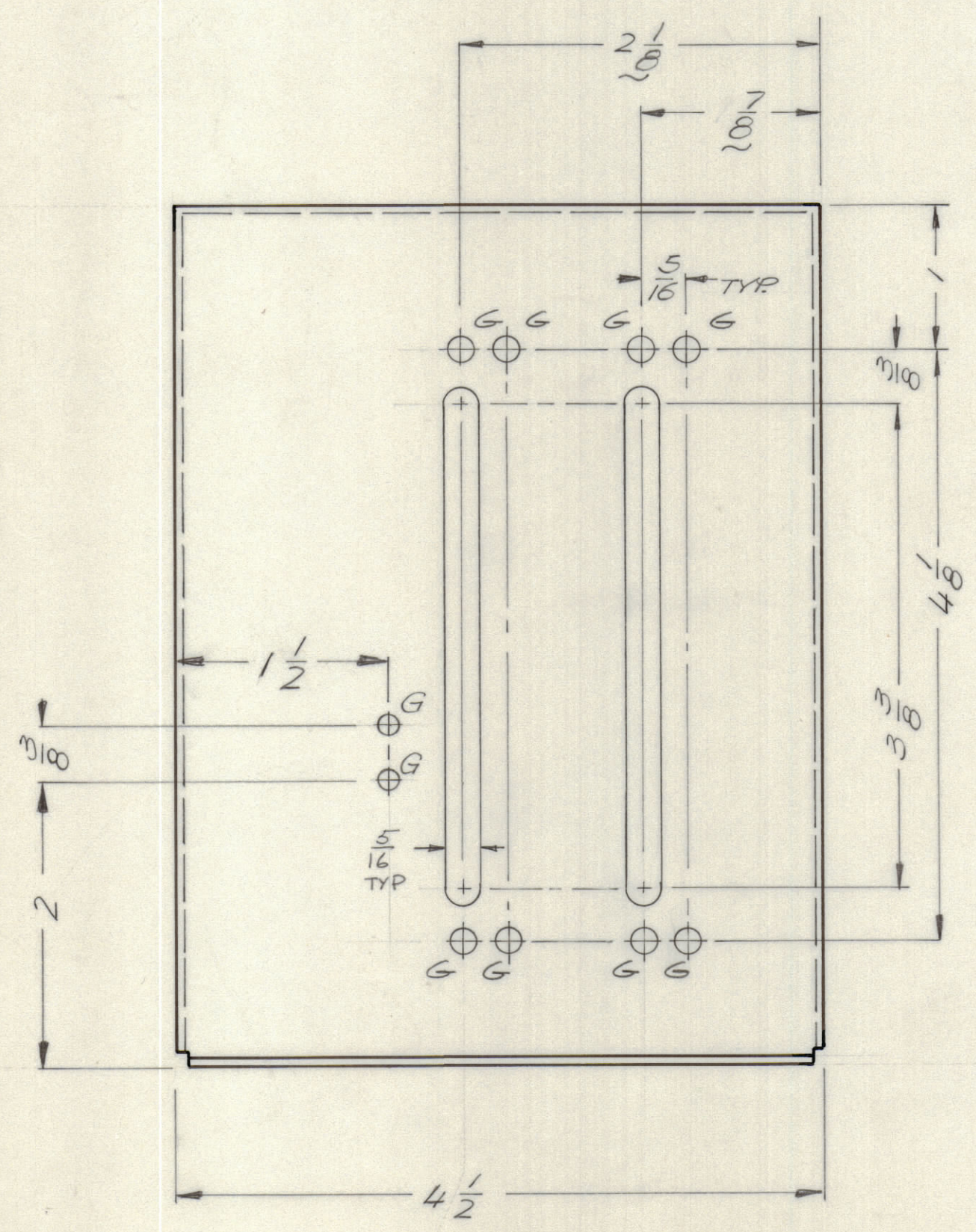
REVISIONS							
E.M.N.NO	DRAFT	CHKD	ZONE	LTR	DESCRIPTION	DATE	APPROVED
	CV			B	ORIGINAL RELEASE FOR PRODUCTION	3/6/72	
20588	GE	eg		A	4 J HOLES WERE E HOLES	4/26/72	eg
20705	CE	ej		B	ADD (2) G HLS TO SIDE VIEW	5/25/72	ej



HOLE DESCRIPTION REQ.

A	SEE DETAIL A	6
B	3/16 DIA.	4
C	3/8 DIA.	1
D	5/8 DIA.	3
E	11/16 DIA.	2
F	.191-.194 DIA.	14
G	9/64 DIA.	14
H	1/4 DIA.	1
J	1/64 DIA.	4

DETAIL A



- UNLESS OTHERWISE SPECIFIED:
1. USE MATERIAL THICKNESS FOR MAXIMUM RADIUS ON ALL BENDS.
 2. ALL ANGULAR BENDS 90 DEGREES.
 3. REMOVE ALL BURRS AND SHARP EDGES.
 4. MOUNT INSERTS AFTER FINISHING.

1	MAT 5	BMA 476
QTY / UNIT	MODEL USED ON	ASS'Y NO.
APPLICATION		
CODE		
NOTICE TO PERSONS RECEIVING THIS DRAWING		
THE TECHNICAL MATERIEL CORPORATION claims proprietary right in the material disclosed hereon. This drawing is issued in confidence for engineering information only and may not be reproduced or used to manufacture anything shown hereon without permission from THE TECHNICAL MATERIEL CORPORATION to the user. This drawing is loaned for mutual assistance and is subject to recall at any time.		

UNLESS OTHERWISE SPECIFIED DIMENSIONS ARE IN INCHES AND INCLUDE CHEMICALLY APPLIED OR PLATED FINISHES	
TOLERANCES ON	
DECIMALS	FRACTIONS
X ± .05	= 1/64
XX ± .01	ANGLES
XXX ± .005	= 0° -30°
FINAL APPROVAL	DATE
MECH. DES.	DATE
ELECT. DES.	DATE
CHECKED	DATE
DRAWN	DATE
G. EVANGELIST	10/4/71

14	1	NT129 0632-4	NUT, SPLINE	F
QTY. REQ.	ITEM	PART NO.	DESCRIPTION	SYMBOL
F. BUDETTI LIST OF MATERIAL				
THE TECHNICAL MATERIEL CORP. MAMARONECK, NEW YORK				
CHASSIS CONTROL UNIT				
MATERIAL .063 ALLUM.		SIZE CODE IDENT NO. DWG NO.		ISSUE
5052 432		D 82679 MS 6288		B
FINISH 5404		SCALE		SHEET 1 OF 1
VEL. IRIDITE				

MS 6288 B