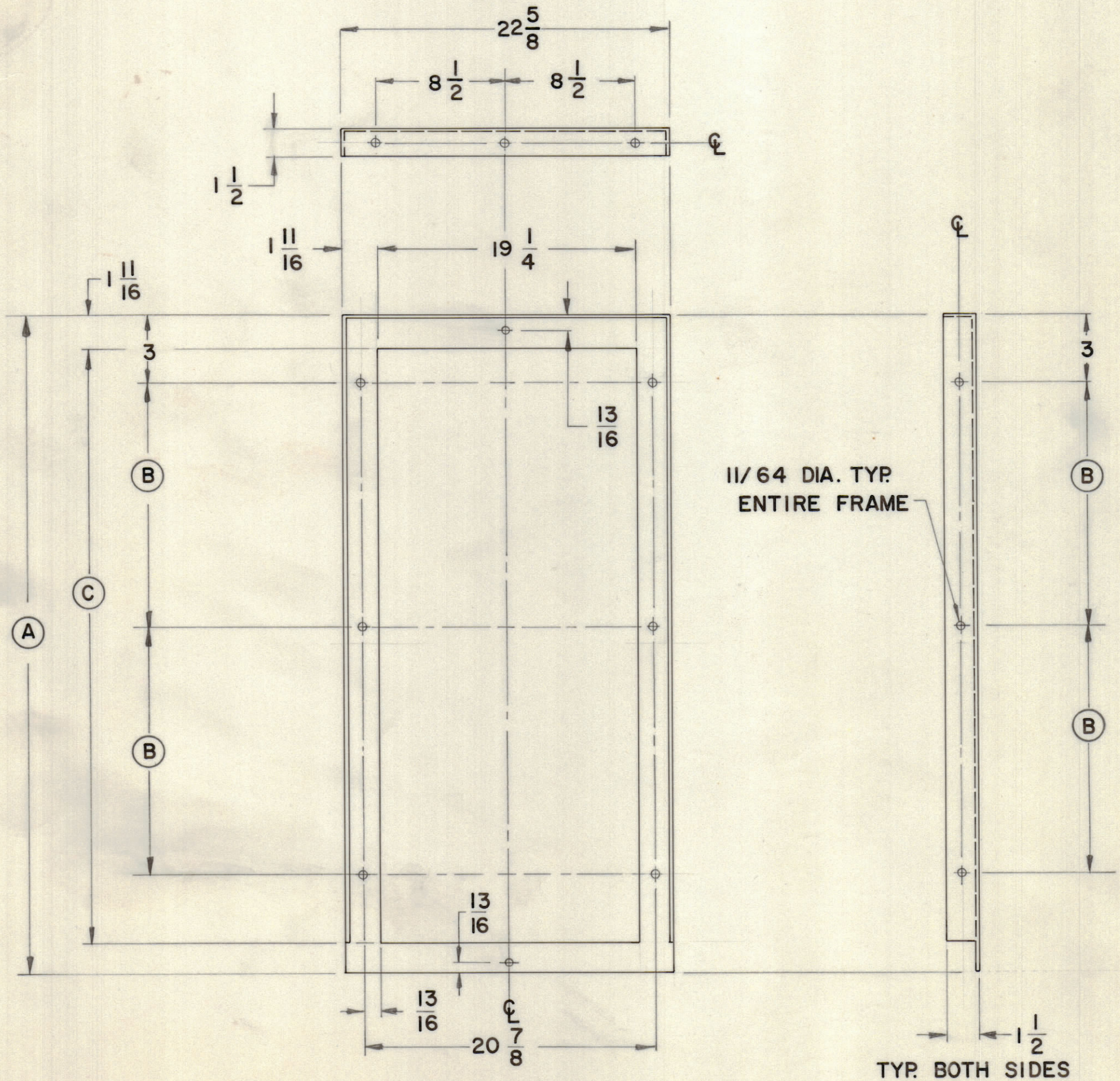


CABINET	(A) FRAME HEIGHT	(B)	(C)
MS 6230-1	49 1/8	20 1/2	45 5/8
MS 6230-2	61 3/8	26 5/8	57 7/8
MS 6230-3	73 5/8	32 3/4	70 1/8

					REVISIONS		
E.M.N.NO	DRAFT	CHKD	ZONE	LTR	DESCRIPTION	DATE	APPROVED
	W			Ø	ORIGINAL RELEASE FOR PRODUCTION	10/21/71	



REF MS 6230

UNLESS OTHERWISE SPECIFIED DIMENSIONS ARE IN INCHES AND INCLUDE CHEMICALLY APPLIED OR PLATED FINISHES

TOLERANCES ON
 DECIMALS .X ± .05
 .XX ± .01
 .XXX ± .005
 FRACTIONS ± 1/64
 ANGLES ± 0° -30'

MATERIAL 1/16 STEEL

FINISH BLACK MATTE

QTY / UNIT	MODEL USED ON	ASS'Y NO.
APPLICATION		
CODE		
NOTICE TO PERSONS RECEIVING THIS DRAWING THE TECHNICAL MATERIEL CORPORATION claims proprietary right in the material disclosed hereon. This drawing is issued in confidence for engineering information only and may not be reproduced or used to manufacture anything shown hereon without permission from THE TECHNICAL MATERIEL CORPORATION to the user. This drawing is loaned for mutual assistance and is subject to recall at any time.		

QTY. REQ.	ITEM	PART NO.	DESCRIPTION	SYMBOL
LIST OF MATERIAL				
THE TECHNICAL MATERIEL CORP. MAMARONECK, NEW YORK				
TRIM, FRAME				
FINAL APPROVAL		DATE	DATE	
MECH. DES.		DATE	DATE	
ELECT. DES.		DATE	DATE	
CHECKED		DATE	DATE	
DRAWN		DATE	DATE	
SIZE	CODE	IDENT NO.	DWG NO.	ISSUE
C	82679		MS 6237	Ø
SCALE NTS			SHEET	OF