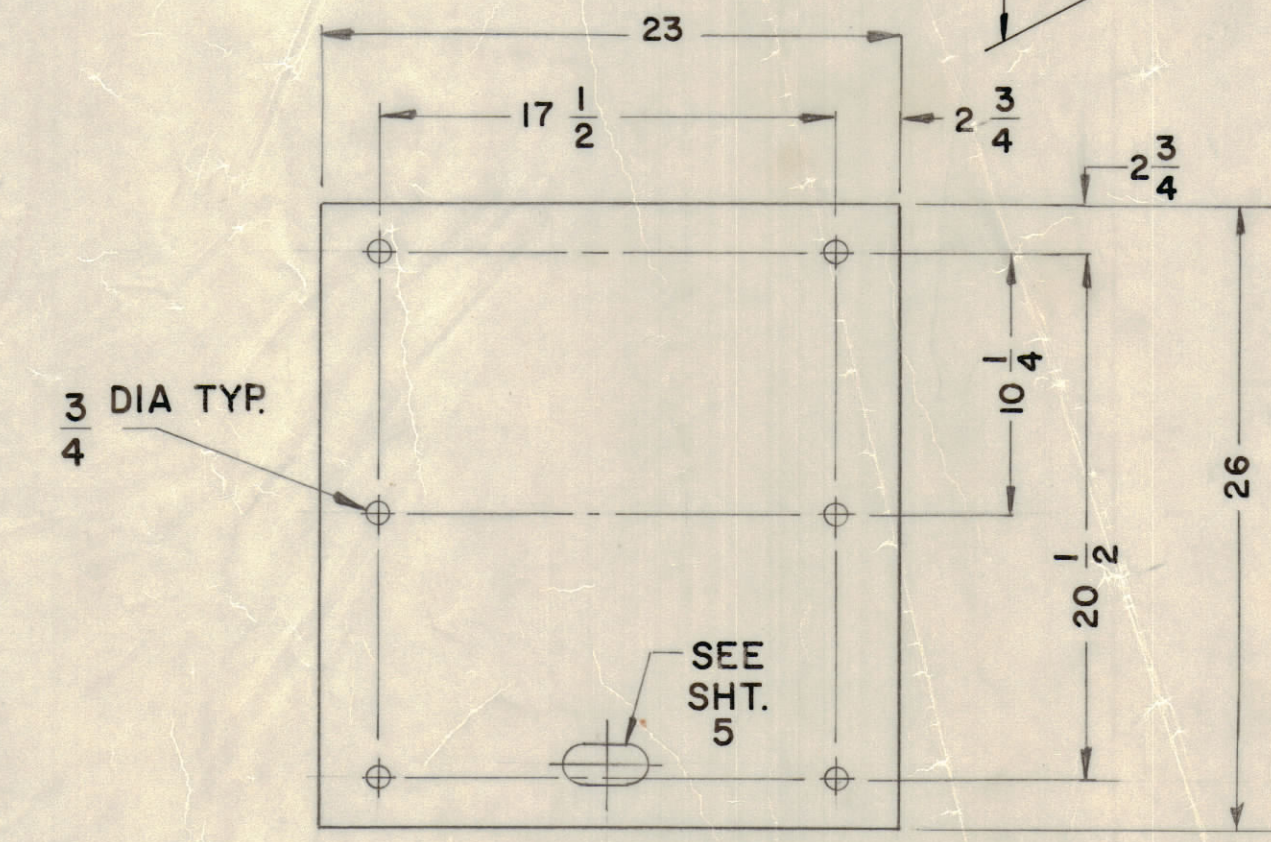
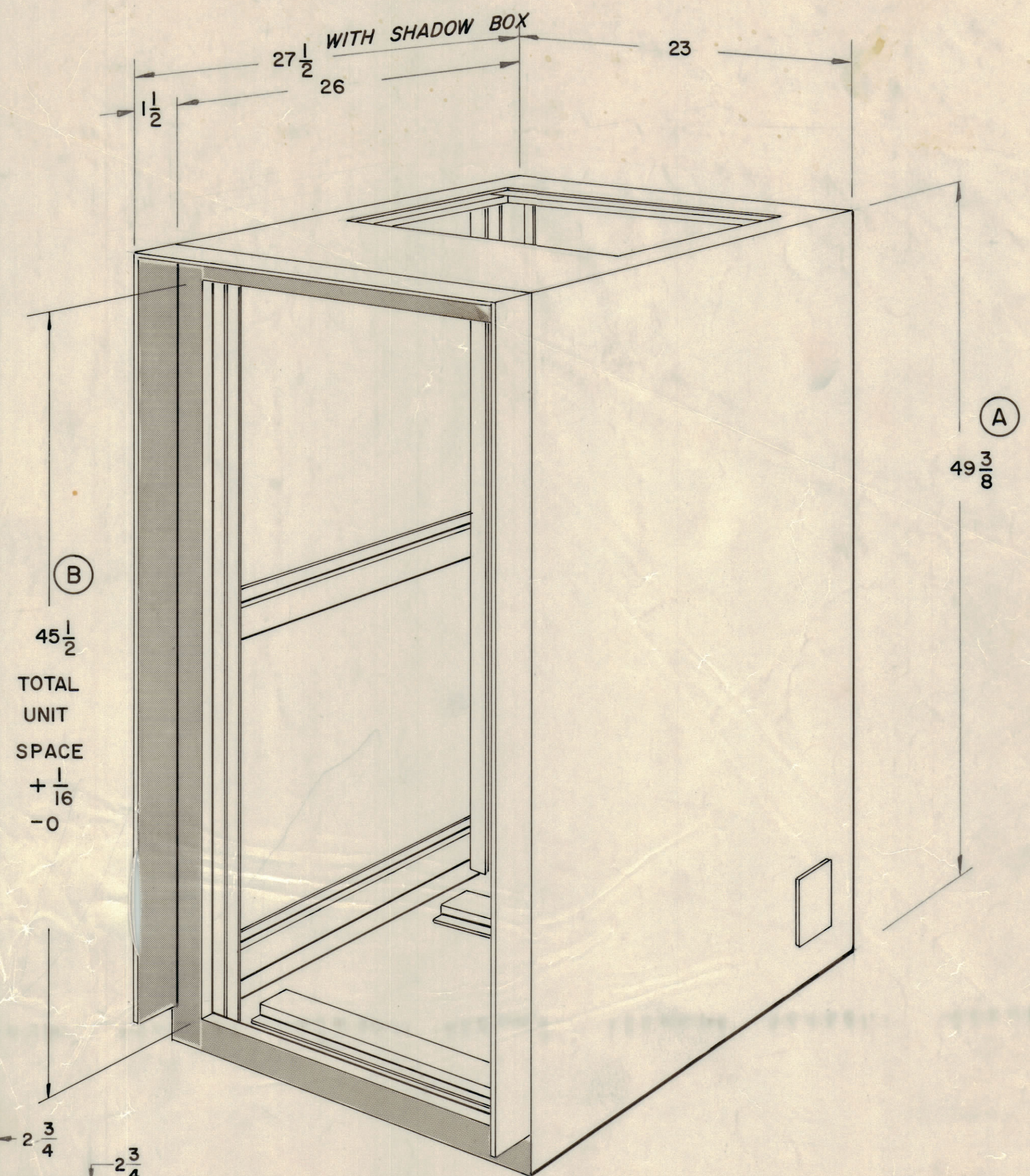


PART NUMBER	(A) OVERALL HEIGHT	(B) UNIT SPACE	(C) REAR DOOR OPENING	(D) REAR DOOR MOUNTING	(E) SIDE RIB SPACING	CABINET USED ON
MS 6230 -1	49 3/8	45 1/2	43 3/8	41 3/8	AS SHOWN SINGLE CENTER RIB ONLY	CAB 40
MS6230 -2	61 5/8	57 3/4	55 5/8	53 5/8	18	CAB 50
MS 6230 -3	73 7/8	70	67 7/8	65 7/8	23	CAB 60
MS 6230-1S	49 3/8	45 1/2	43 3/8	41 3/8	AS SHOWN SINGLE CENTER RIB ONLY	CAB 40-S SEE SPECIAL NOTE

REVISIONS							
E.M.N.O.	DRAFT	CHKD	ZONE	LTR	DESCRIPTION	DATE	APPROVED
21220	H.D.	J.		A	ORIGINAL RELEASE FOR PRODUCTION	10/14/71	
21336	GDL	G.		B	MS6230-1S ADDED; SHEET 8 ADDED	4-30-75	
					SEE SHEET 8	12-13-75	

NOTE: ALL HEIGHT DIMENSIONS SHOWN FOR MS 6230-1
SEE CHART FOR VARYING DIMENSIONS FOR OTHER CABINETS



SPECIAL NOTE:
SHEET 6 OF MS6230 NOT USED.
TOP TO BE MANUFACTURED
USING SHEET 8.

FINISH NOTES
S520 BLUE GRAY TEXTURED VINYL PAINT.

FABRICATION NOTES
MATERIAL - 1/16 STEEL UNLESS OTHERWISE
SPECIFIED

TOLERANCE SPECIFICATIONS (ALL SHEETS)
OVERALL STRUCTURAL TOL. $\pm 1/16$
HOLE LOCATIONS $\pm 1/64$ C-C
OTHER TOLERANCES AS SPECIFIED
NOTE
DO NOT ACCUMULATE TOL. ON CHAIN DIMENSIONS

CAB - 40, 50, 60		
QTY / UNIT	MODEL USED ON	ASSY NO.
	APPLICATION	
	CODE	
<small>NOTICE TO PERSONS RECEIVING THIS DRAWING</small> <small>THE TECHNICAL MATERIEL CORPORATION claims proprietary right in the material disclosed hereon. This drawing is issued in confidence for engineering information only and may not be reproduced or used to manufacture anything shown hereon without permission from THE TECHNICAL MATERIEL CORPORATION to the user. This drawing is loaned for mutual assistance and is subject to recall at any time.</small>		

UNLESS OTHERWISE SPECIFIED DIMENSIONS ARE IN INCHES AND INCLUDE CHEMICALLY APPLIED OR PLATED FINISHES	
DECIMALS	FRACTIONS
.X $\pm .05$	$\frac{1}{64}$
.XX $\pm .01$	ANGLES
.XXX $\pm .005$	$\pm 0^{\circ}-30'$

QTY. REQ.	ITEM	PART NO.	DESCRIPTION	SYMBOL
E. BUDETTI LIST OF MATERIAL				
FINAL APPROVAL <i>[Signature]</i> DATE 23 Sep 71				
MECH. DES. <i>[Signature]</i> DATE 23 Sep 71				
ELECT. DES. <i>[Signature]</i> DATE				
CHECKED DATE				
DRAWN <i>[Signature]</i> DATE 7/2/71				
MATERIAL AS NOTED				
FINISH AS NOTED				
THE TECHNICAL MATERIEL CORP.		MAMARONECK, NEW YORK		
CABINET, ELECTRICAL EQUIP				
SIZE	CODE	IDENT NO.	DWG NO.	ISSUE
D	82679	MS 6230		B
SCALE NTS				SHEET / OF 8