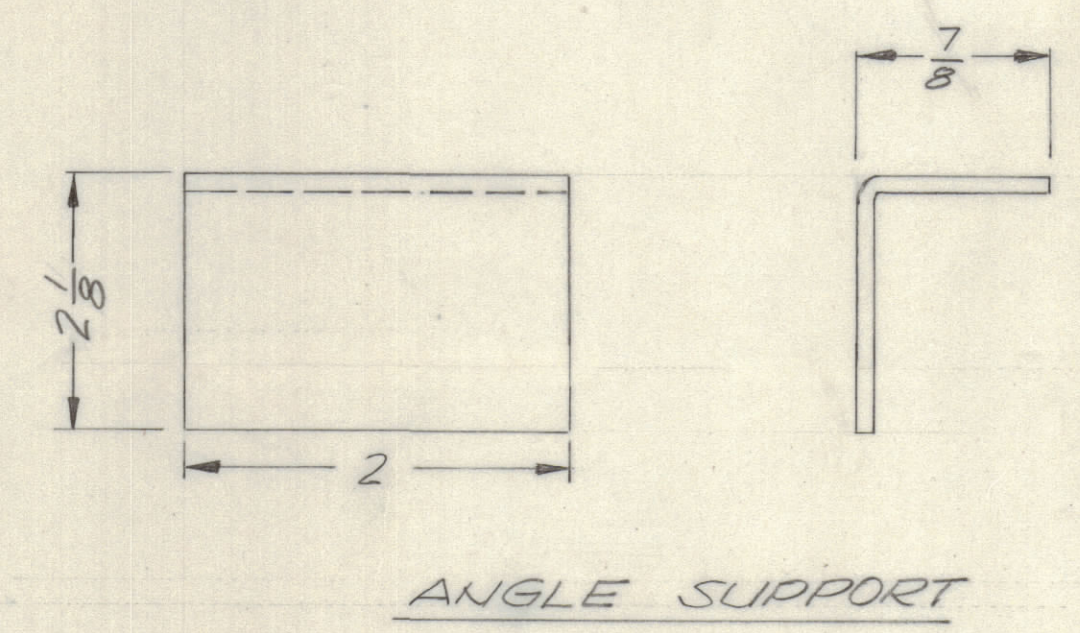
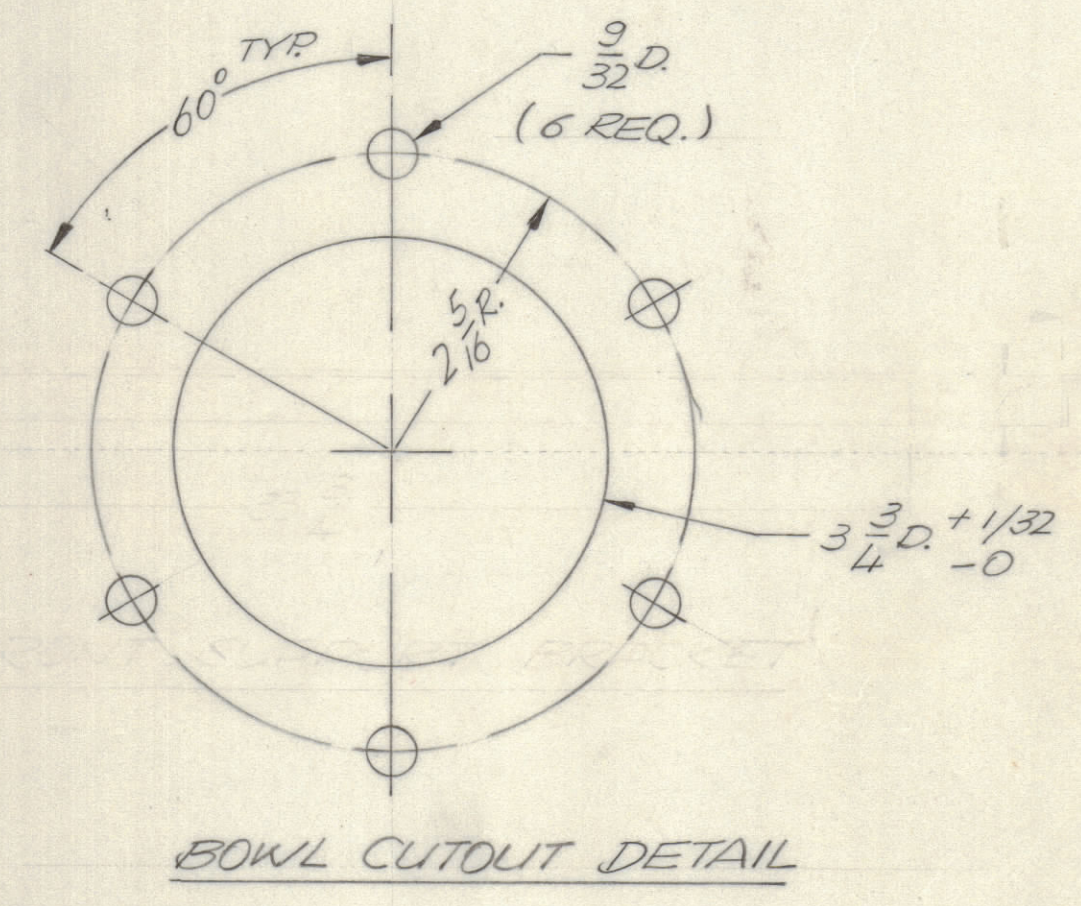
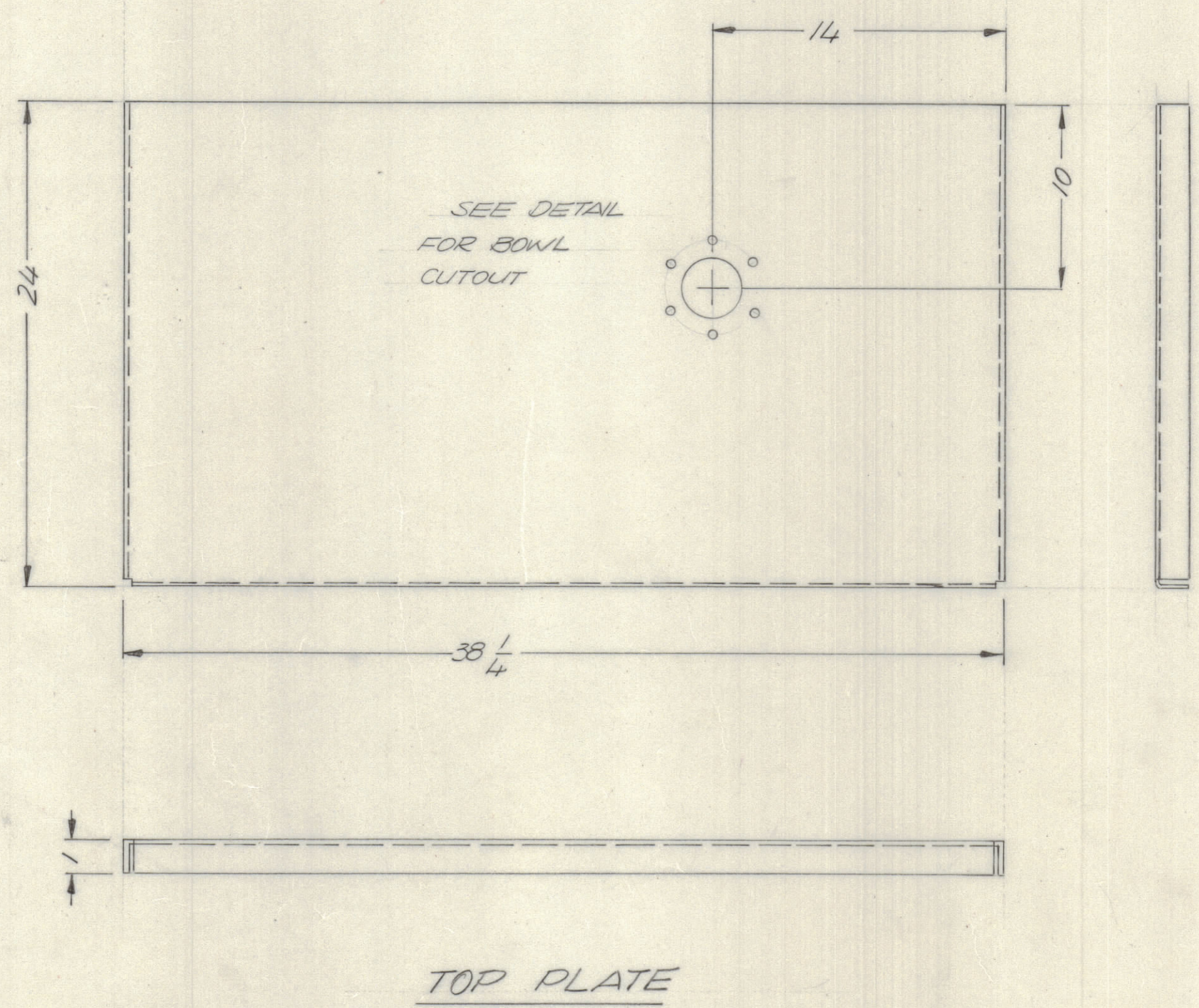
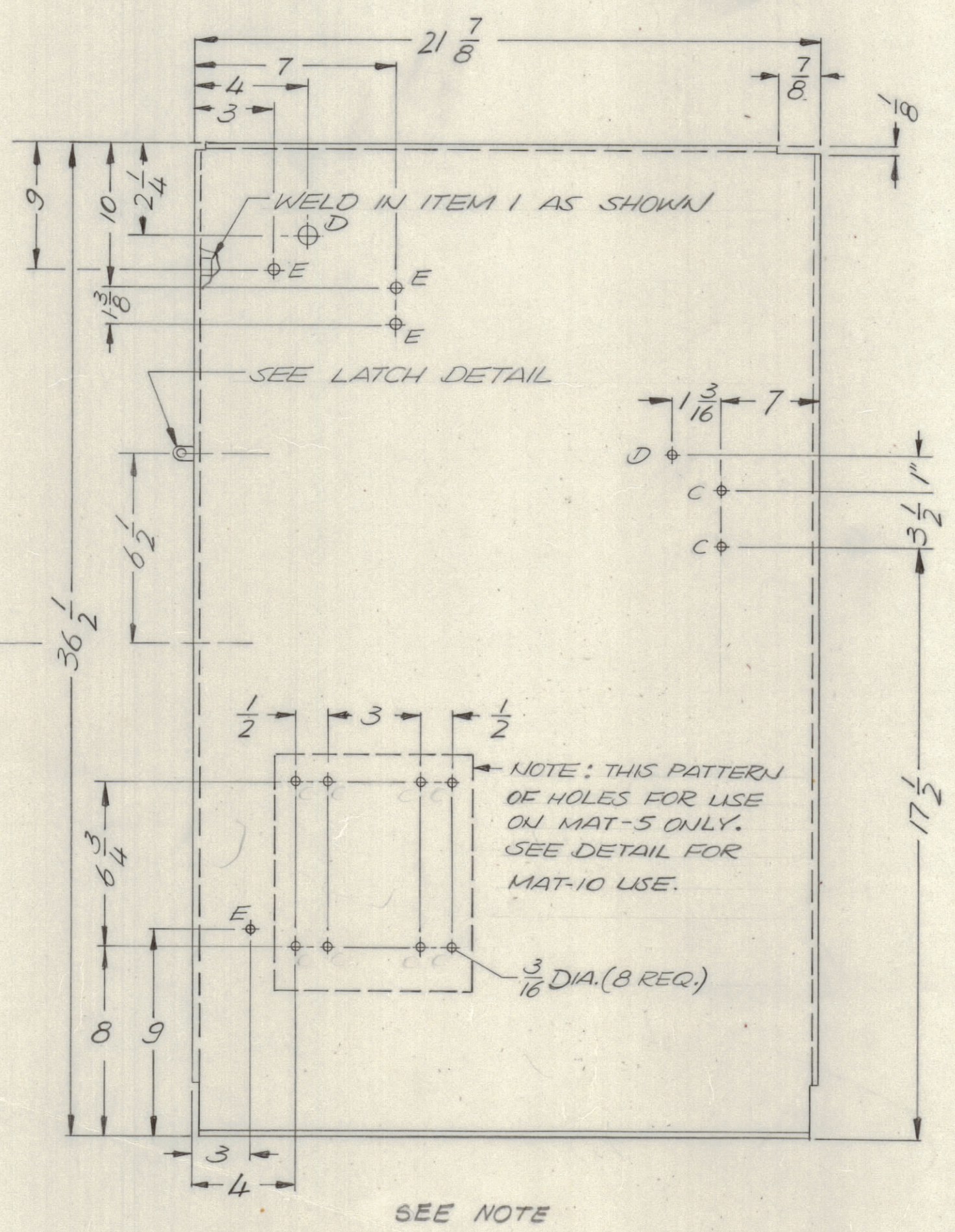
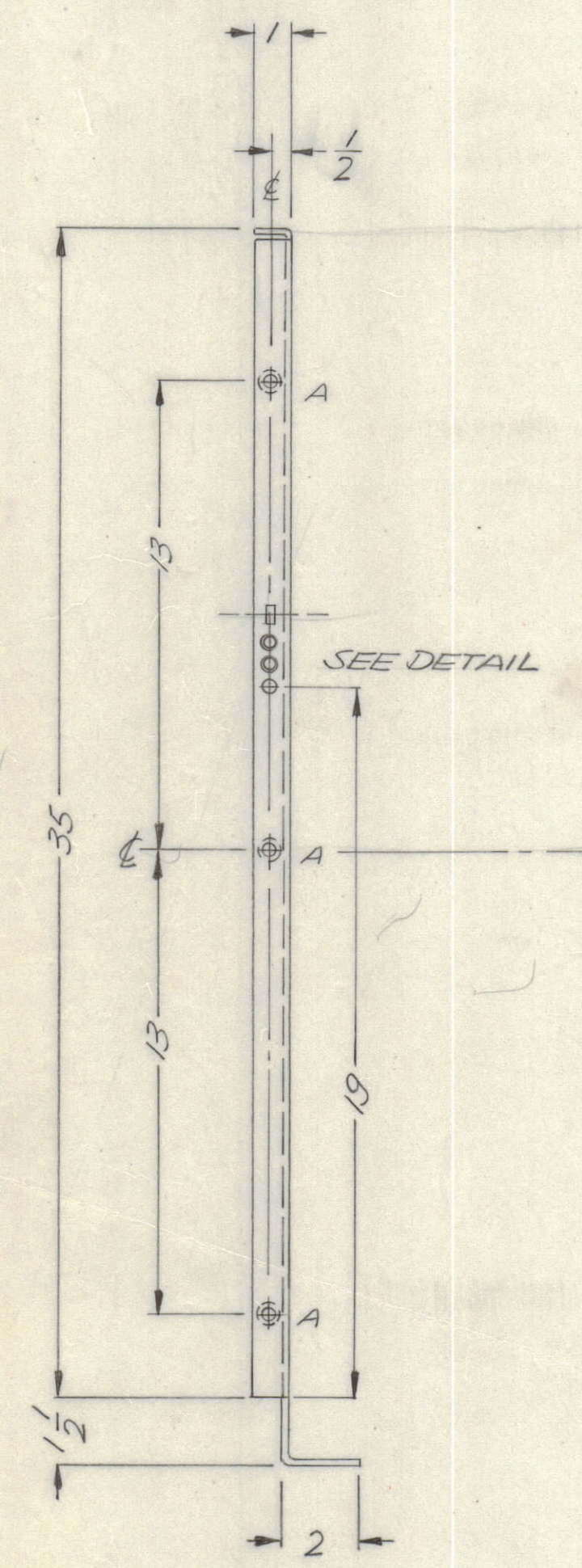
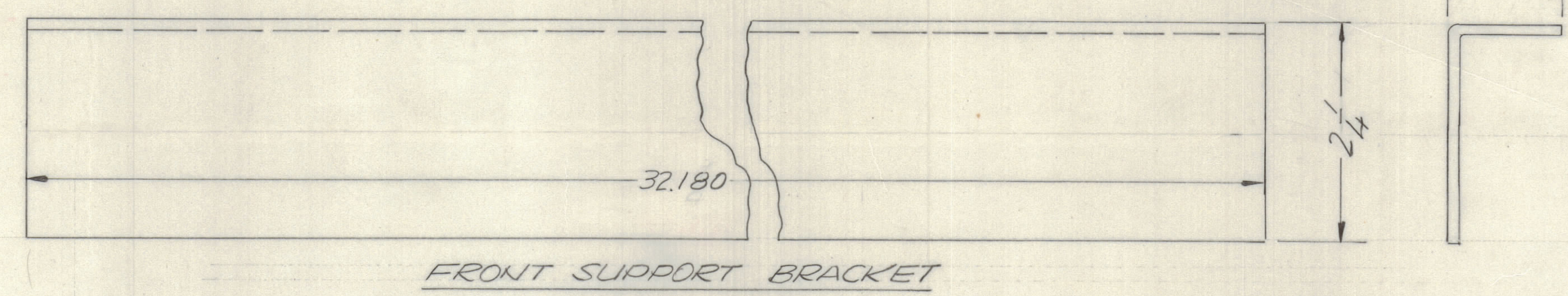
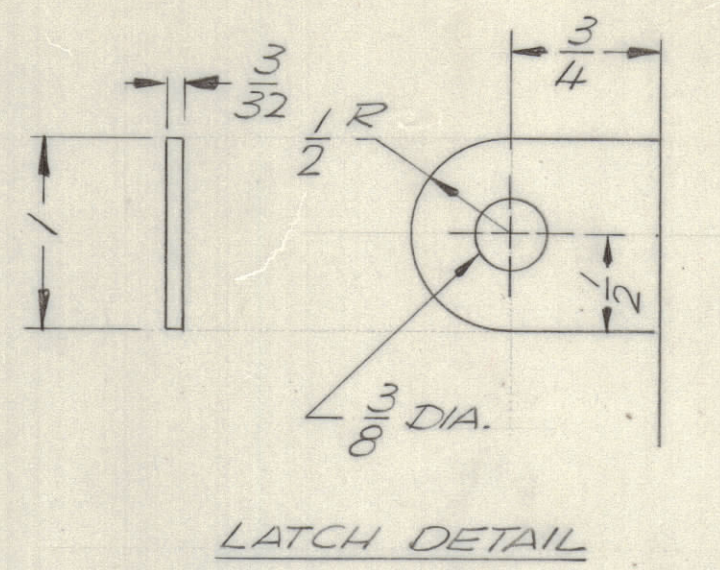
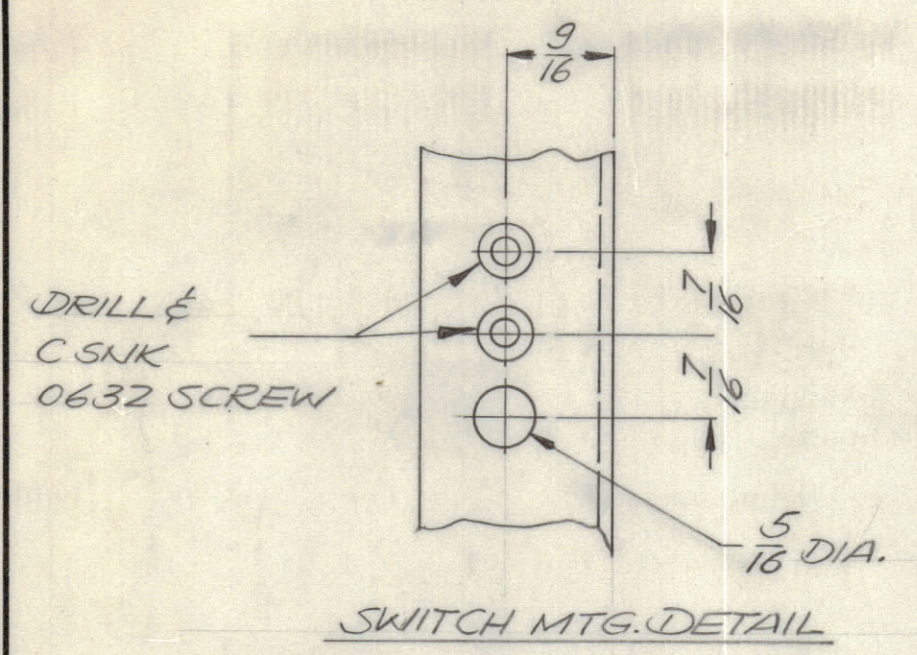
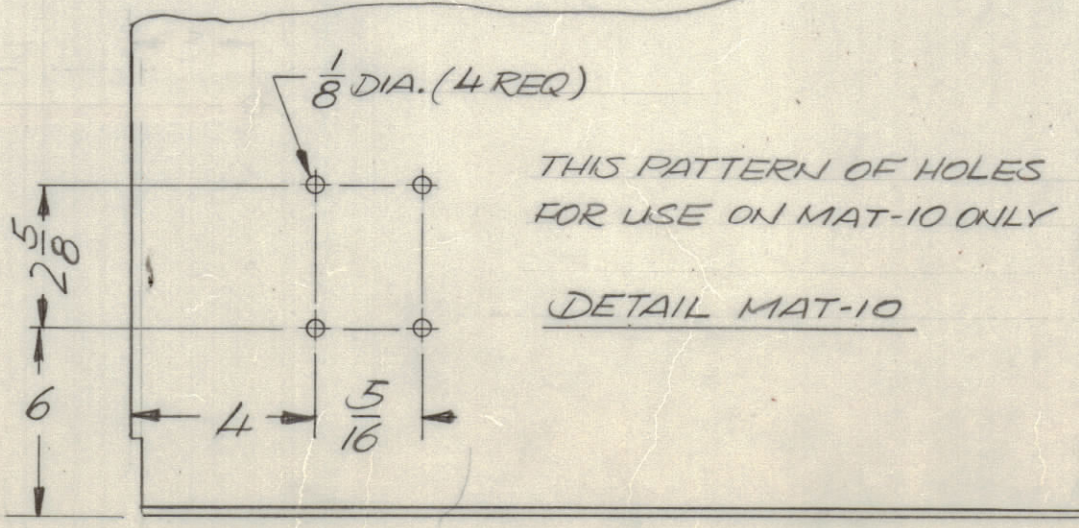
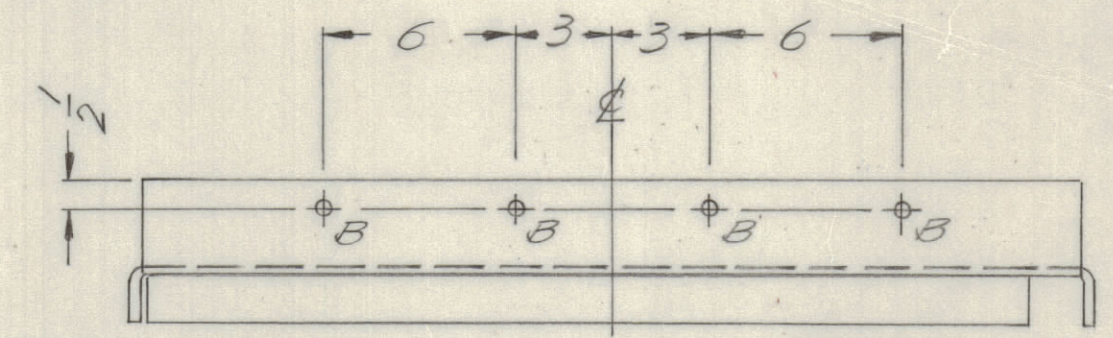


REVISIONS							
E.M.N.O.	DRAFT	CHKD	ZONE	LTR	DESCRIPTION	DATE	APPROVED
					ORIGINAL RELEASE FOR PRODUCTION	12/14/72	
				A	NOTE FOR LEFT SIDE PLATE CLARIFIED - SEE SHEET 4		



HOLE DESCRIPTION REQ.

A	15/64 DIA.	3
B	3/8 DIA.	4
C	1/64 DIA.	2
D	1/2 DIA.	2
E	3/64 DIA.	4



NOTE  
RIGHT SIDE PLATE SHOWN, FOR LEFT SIDE USE OPPOSITE HAND MINUS ITEM 1, LATCH, & ALL HOLES  
DIMENSIONS GIVEN FOR REFERENCE

- UNLESS OTHERWISE SPECIFIED:
- USE MATERIAL THICKNESS FOR MAXIMUM RADIUS ON ALL BENDS.
  - ALL ANGULAR BENDS 90 DEGREES.
  - REMOVE ALL BURRS AND SHARP EDGES.
  - MOUNT INSERTS AFTER FINISHING.

QTY / UNIT	MODEL USED ON	ASS'Y NO.
1	MAT 5	BMA 415
APPLICATION		
CODE		
MATERIAL		
FINISH		

UNLESS OTHERWISE SPECIFIED DIMENSIONS ARE IN INCHES AND INCLUDE CHEMICALLY APPLIED OR PLATED FINISHES

TOLERANCES ON  
DECIMALS .X ± .05  
XX ± .01  
XXX ± .005

FRACTIONS ± 1/64  
ANGLES ± 0° - 30°

MATERIAL 13 GA CRS

QTY. REQ.	ITEM	PART NO.	DESCRIPTION	SYMBOL
3	1	NT 129 1032-6	NUT, SWAGE	A

LIST OF MATERIAL

FINAL APPROVAL *F. BUDETTI* DATE 12/14/72  
MECH. DES. *BAR* DATE 12/14/72  
ELECT. DES. DATE  
CHECKED DATE  
DRAWN *GE* DATE 6/17/71

THE TECHNICAL MATERIEL CORP.  
MAMARONECK, NEW YORK

CHANNELIZED LF  
ANTENNA TUNER

SIZE	CODE	IDENT NO.	DWG NO.	ISSUE
D	82679		MS 6215	A

SCALE: NTS SHEET 2 OF 4