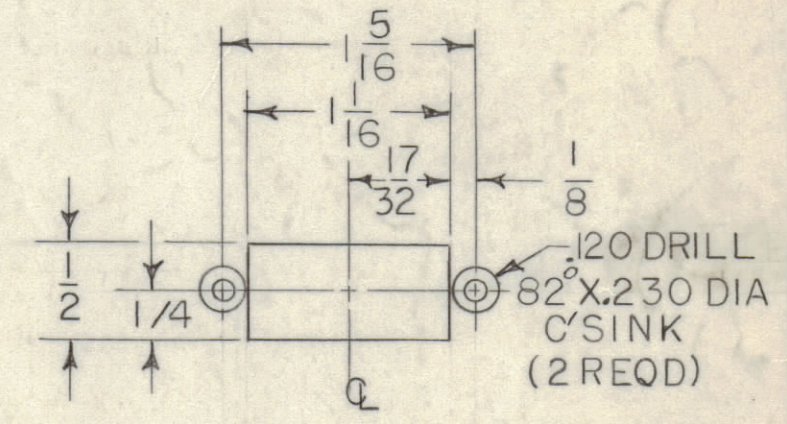
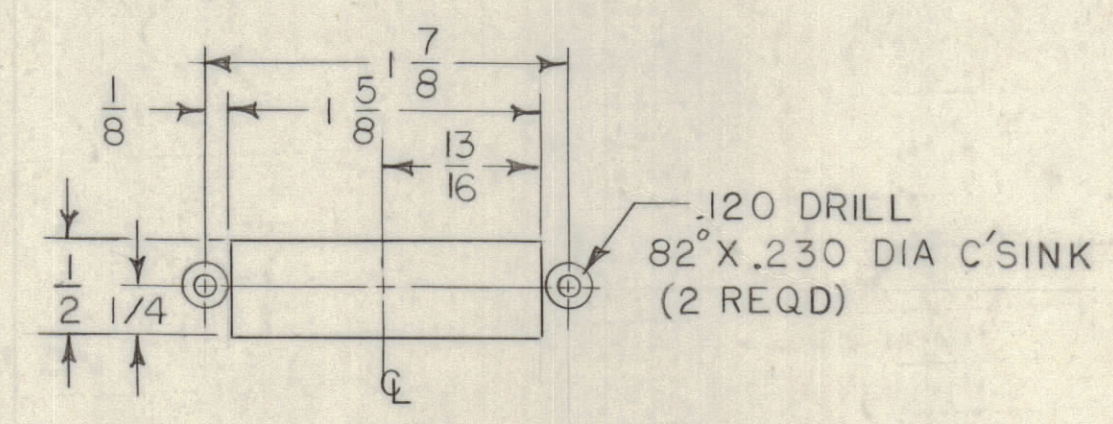
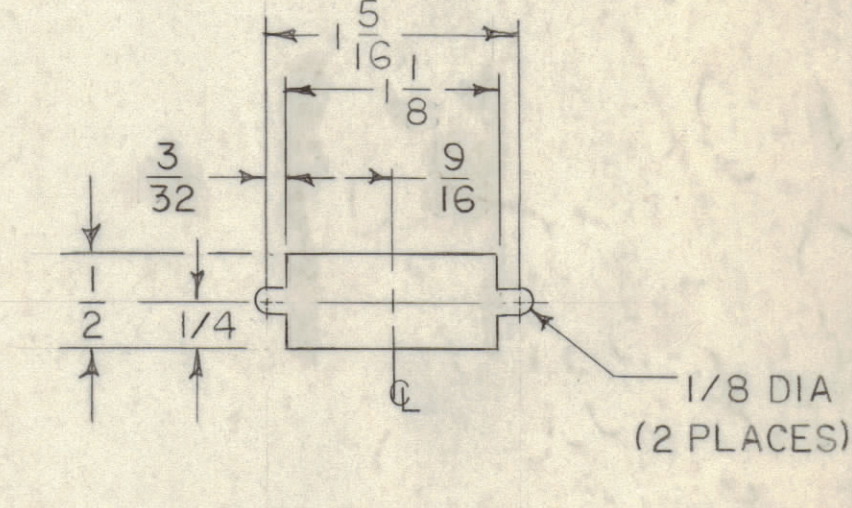
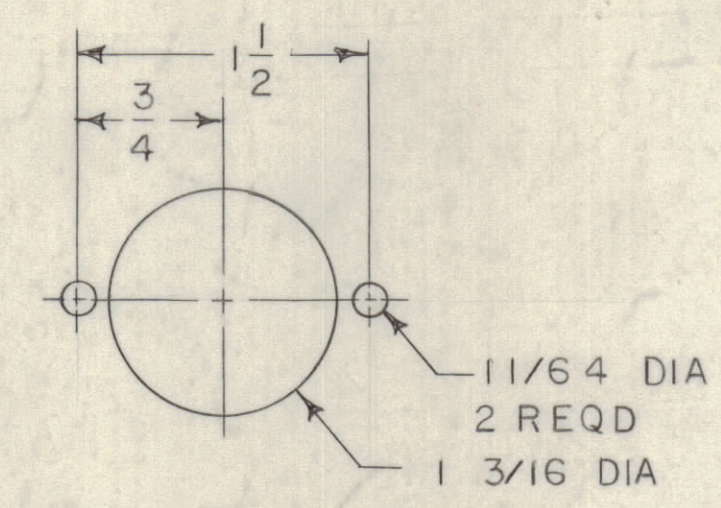
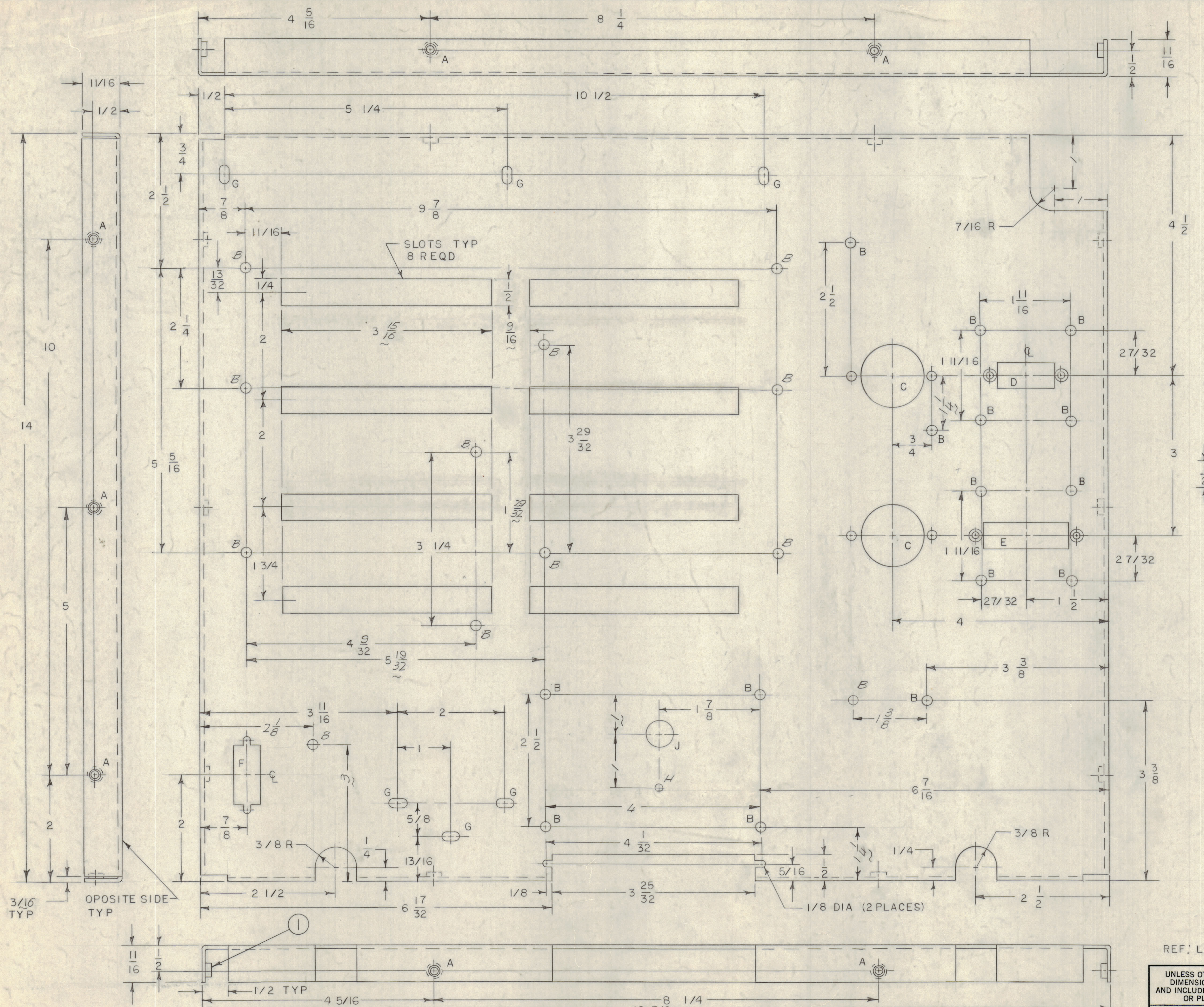


REVISIONS							
E.M.N.O.	DRAFT	CHKD	ZONE	LTR	DESCRIPTION	DATE	APPROVED
	RF			X	EXP RELEASE	3-8-71	
				B	ORIGINAL RELEASE FOR PRODUCTION	6/18/71	<i>R.F.H.</i>
20657	GE	Φ	A	A	DIM L 9/32 WAS L 11/32 ZONE B7	4/26/72	<i>J</i>



HOLE	DESCRIPTION	REQD
A	ISI-.194 DIA	10
B	3/16 DIA	27
C	SEE DETAIL	2
D	SEE DETAIL	1
E	SEE DETAIL	1
F	SEE DETAIL	1
G	11/64 X 11/32 SLOT	6
H	9/64 DIA	1
J	1/2 DIA	1

- NOTES:
- UNLESS OTHERWISE SPECIFIED: USE MATERIAL THICKNESS FOR MAXIMUM RADIUS ON ALL BENDS.
  - ALL ANGULAR BENDS 90 DEGREES.
  - REMOVE ALL BURRS AND SHARP EDGES.
  - MOUNT INSERTS AFTER FINISHING.

REF: LD 2467

IO	I	NT I29 0632 4	NUT, ROUND, SWAGE TYPE	A
QTY. REQ.	ITEM	PART NO.	DESCRIPTION	SYMBOL
	F. BUDETTI LIST OF MATERIAL			

UNLESS OTHERWISE SPECIFIED DIMENSIONS ARE IN INCHES AND INCLUDE CHEMICALLY APPLIED OR PLATED FINISHES	FINAL APPROVAL <i>OB</i> DATE 8/8/71	THE TECHNICAL MATERIEL CORP. MAMARONECK, NEW YORK
TOLERANCES ON DECIMALS X ± .05 XX ± .01 XXX ± .005	MECH. DES. <i>Alitona</i> DATE 6-18-71	CHASSIS, MAIN
FRACTIONS ± 1/64 ANGLES ± 0°-30'	ELECT. DES. <i>K. Polano</i> DATE 6-18-71	
	CHECKED <i>K. Polano</i> DATE 3-9-71	
MATERIAL .064 THK ALUM 5052-H32	DRAWN <i>K. Polano</i> DATE 3-9-71	SIZE CODE IDENT NO. DWG NO.
FINISH S404 YEL IRIDITE		D 82679 MS 6201

I	AX-5130	ASSY NO.
QTY / UNIT	MODEL USED ON	
APPLICATION		
CODE		
NOTICE TO PERSONS RECEIVING THIS DRAWING THE TECHNICAL MATERIEL CORPORATION claims proprietary right in the material disclosed hereon. This drawing is issued in confidence for engineering information only and may not be reproduced or used to manufacture anything shown hereon without permission from THE TECHNICAL MATERIEL CORPORATION to the user. This drawing is loaned for mutual assistance and is subject to recall at any time.		

SCALE 1/1	SHEET 1 OF 1
-----------	--------------