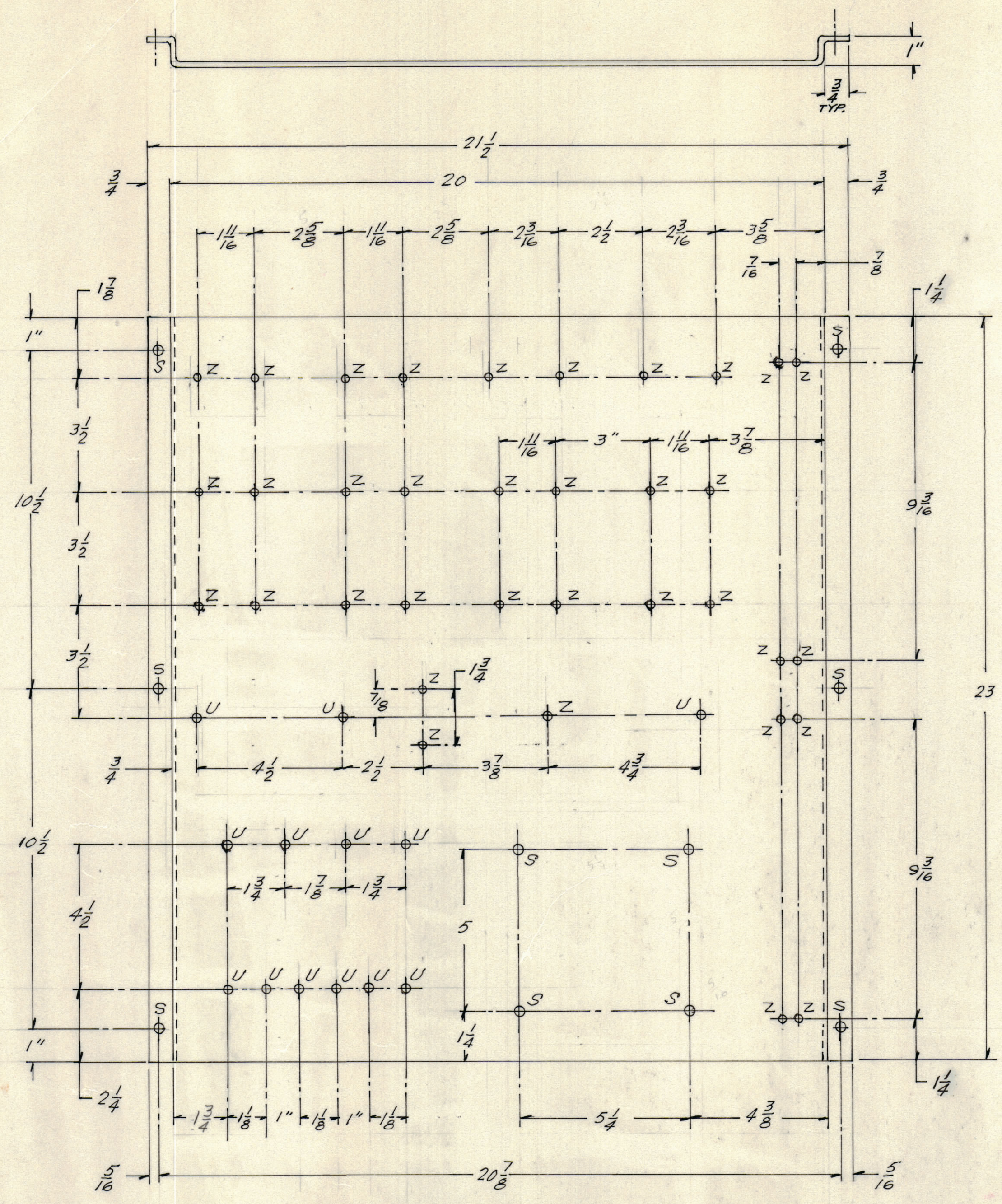
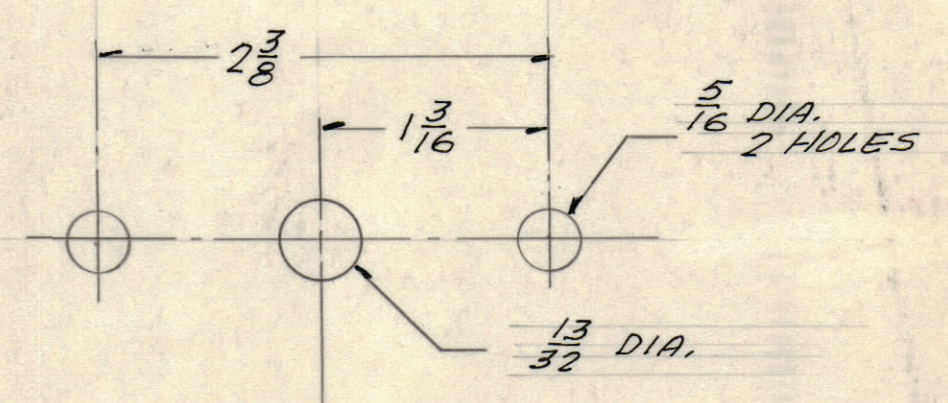
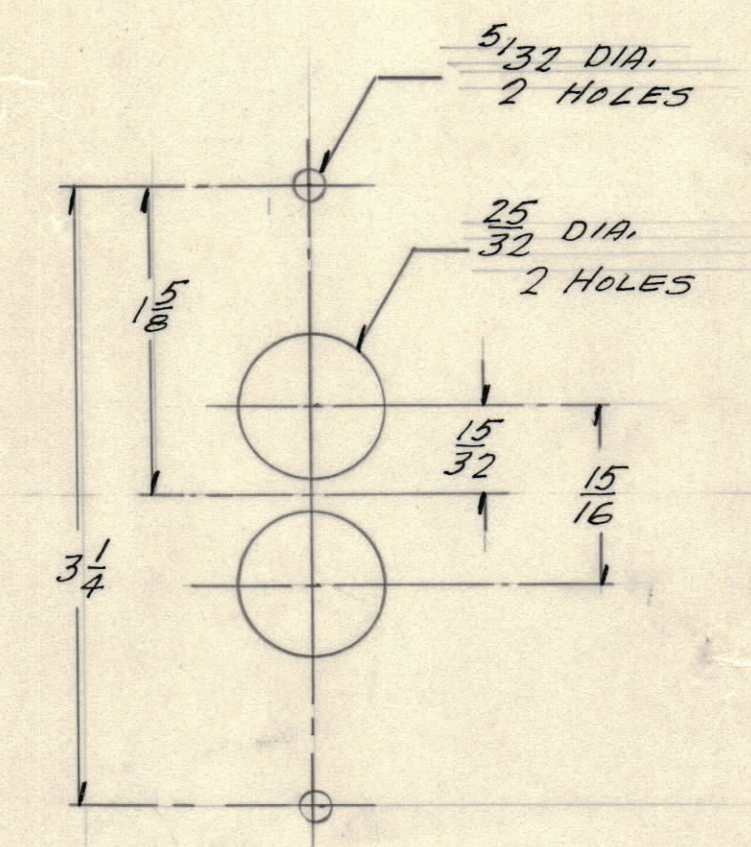
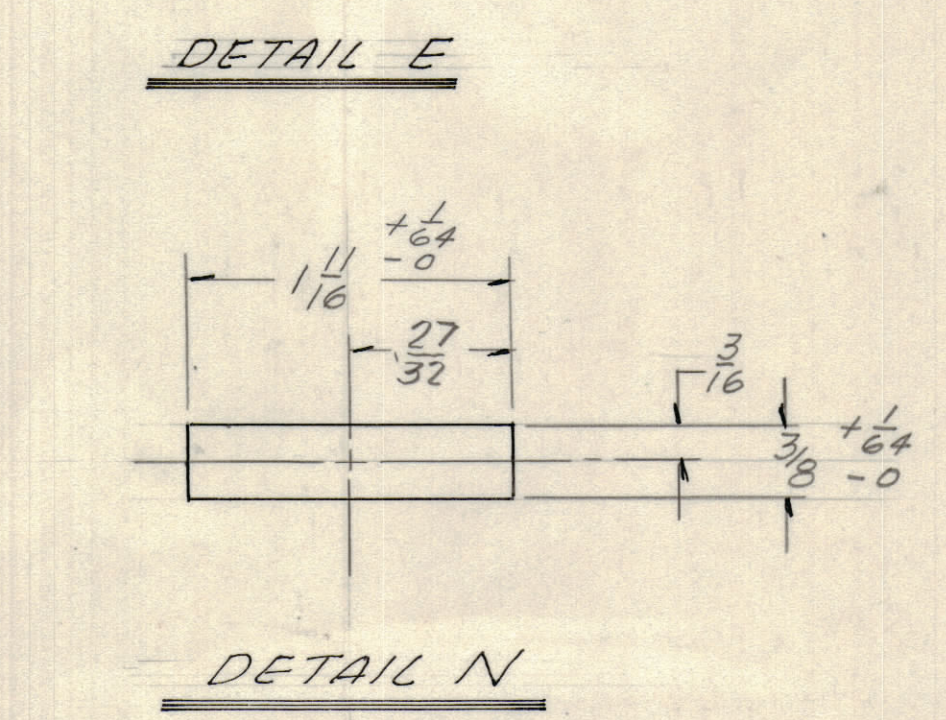
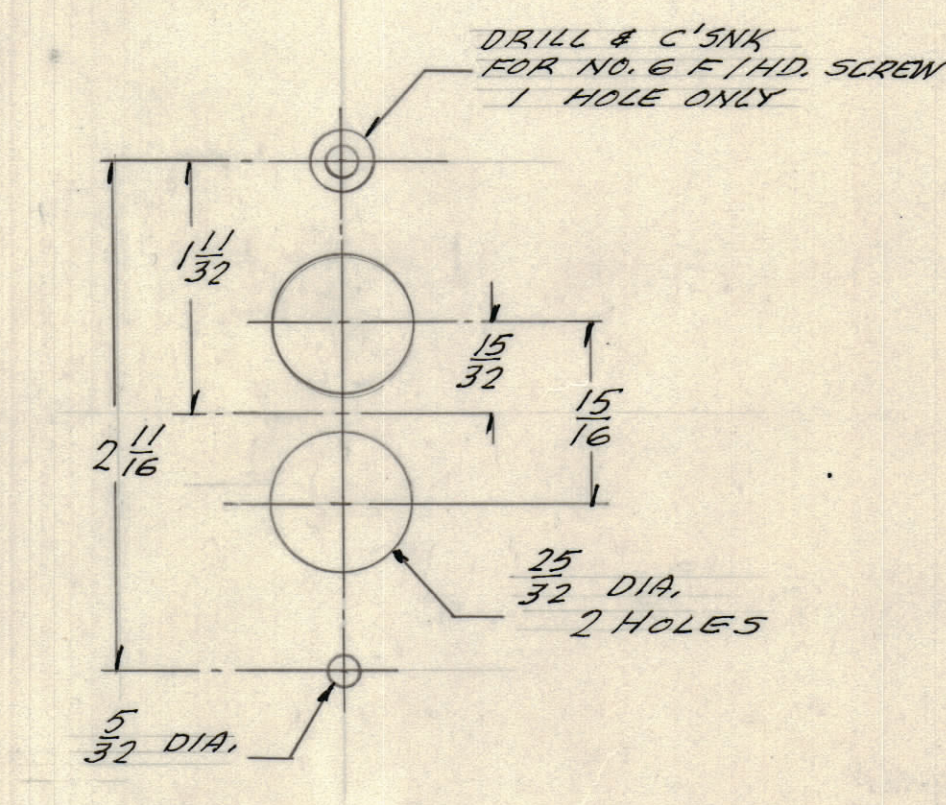
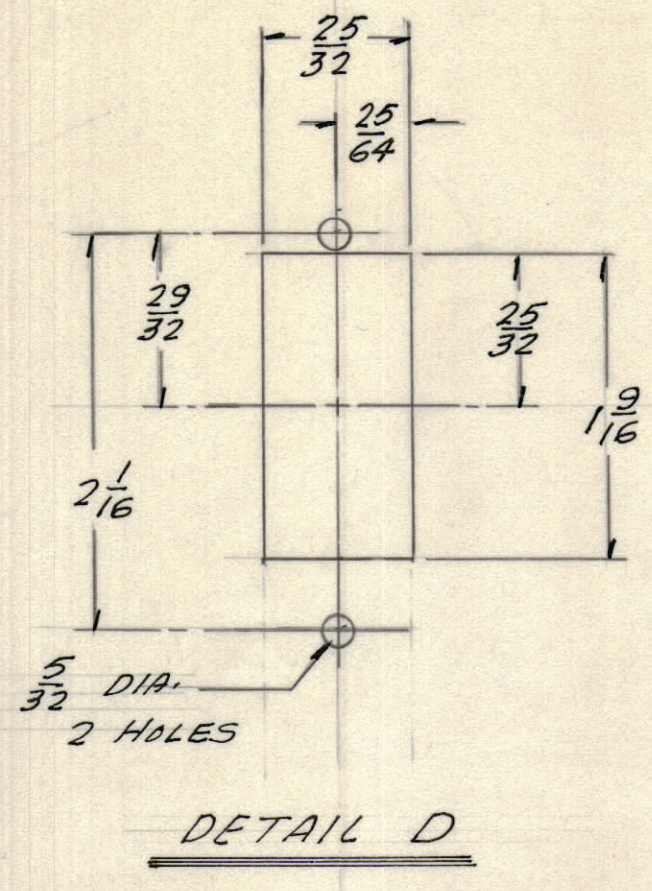
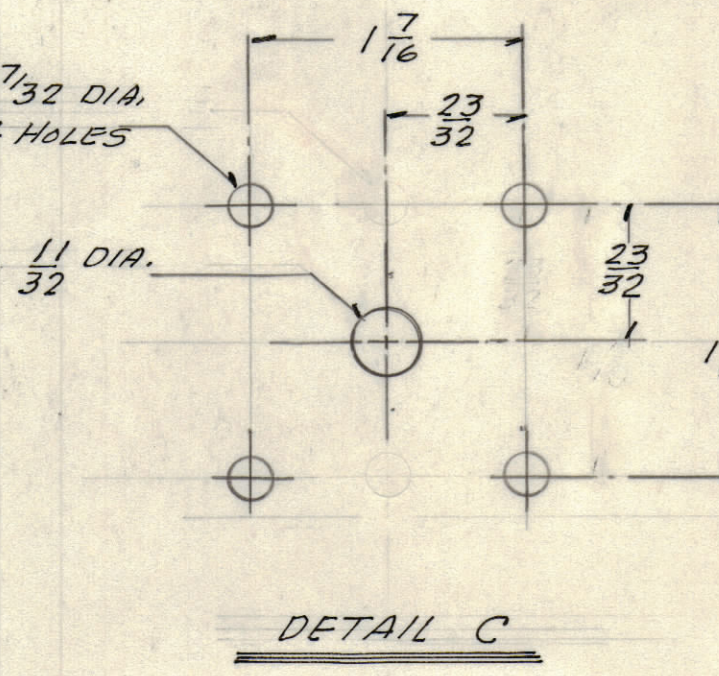
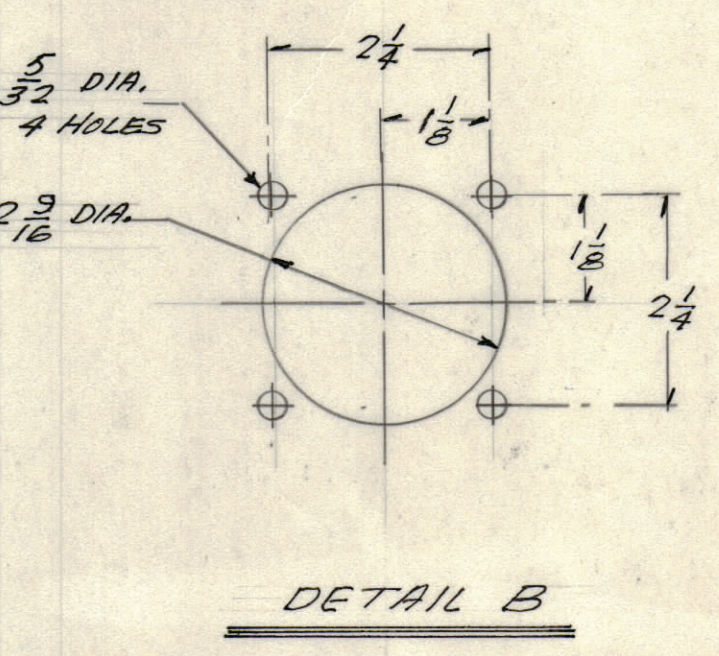
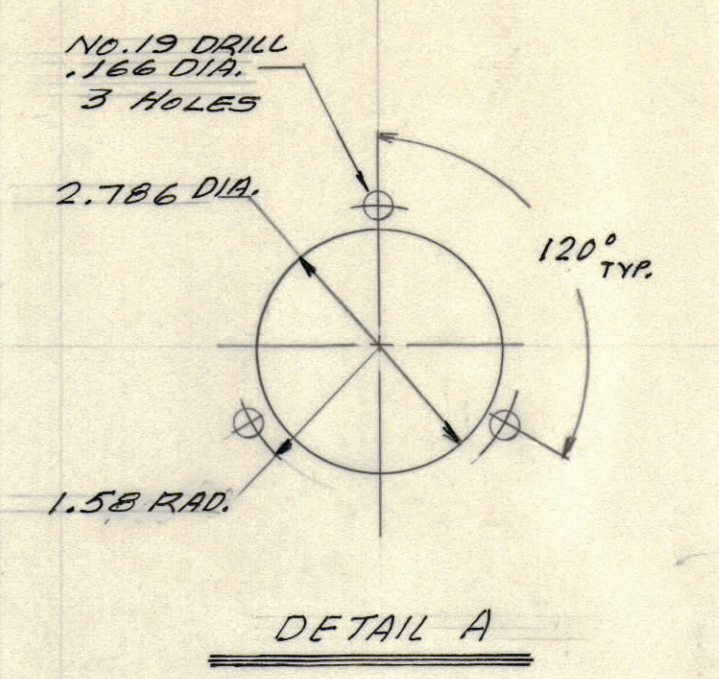


ZONE		LTR		REVISIONS		DATE	DRAFT	CHK'D	APP'D



INTERIOR COMPONENT PANEL
 .1196 (11GA) C.R. STL.
 1 REQ'D.
 MS6177-1



QTY REQ	QTY REQ	QTY REQ	ITEM	PART NO.	MANUFACTURER	DESCRIPTION	SYM
PARTS LIST							

INTERPRET DRAWING PER LISTED DOCUMENTS	UNLESS OTHERWISE SPECIFIED DIMENSIONS ARE IN INCHES AND INCLUDE CHEMICALLY APPLIED OR PLATED FINISHES REMOVE ALL BURRS AND SHARP EDGES
DIMENSIONING MIL-STD-8 SURFACE ROUGHNESS MIL-STD-10 ABBREVIATIONS MIL-STD-12 ELECTRONIC SYMBOLS MIL-STD-15 WELDING SYMBOLS JAN-STD-19	TOLERANCES ON FRACTIONS ANGLES DECIMALS +1/64 -1/64 HOLES 1/2
NEXT ASSY	USED ON
APPLICATION	
NOTICE TO PERSONS RECEIVING THIS DRAWING THE TMC SYSTEMS AND POWER CORPORATION claims proprietary right in the material disclosed hereon. This drawing is issued in confidence for engineering information only and may not be reproduced or used to manufacture anything shown hereon without permission from THE TMC SYSTEMS AND POWER CORPORATION to the user. This drawing is loaned for mutual assistance and is subject to recall at any time.	
FINISH	SEE NOTE 6 SHT. 1 OF 4

DRAWN	DATE
FRAMPTON	11-26-73
CHECKED	11-28-73
D. ENG.	12-7-73
P. ENG.	12-10-73
P. MGR.	
CHIEF, ENG. DEPT.	12-11-73

THE TMC SYSTEMS AND POWER CORPORATION	SPRINGFIELD, VIRGINIA
CONTROL CABINET DRILLING LAYOUT & DETAILS	
SIZE	CODE IDENT NO
D	24146
DWG. NO.	REV
MS6177	
SCALE 3/16	SHEET 4 OF 4