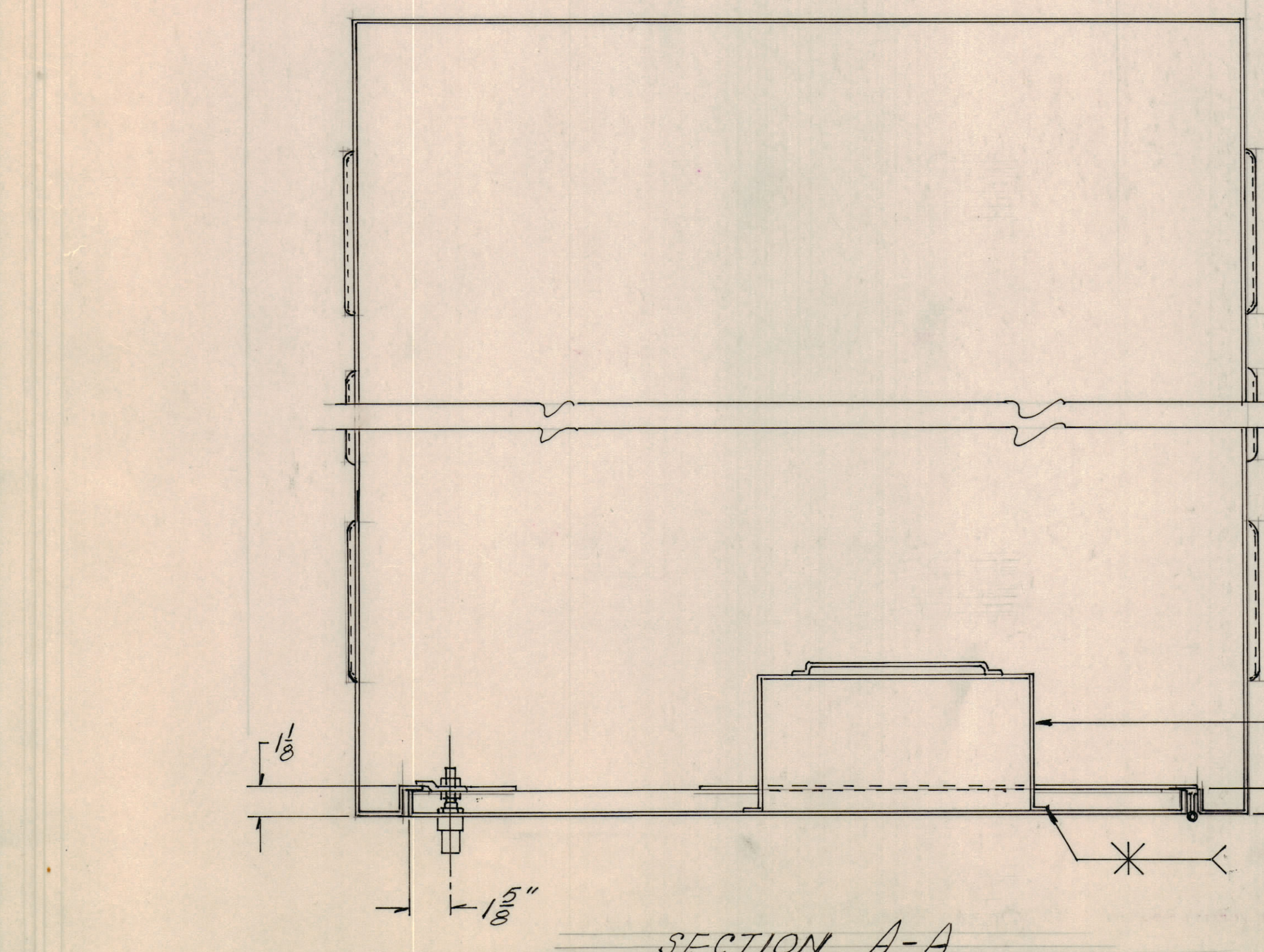
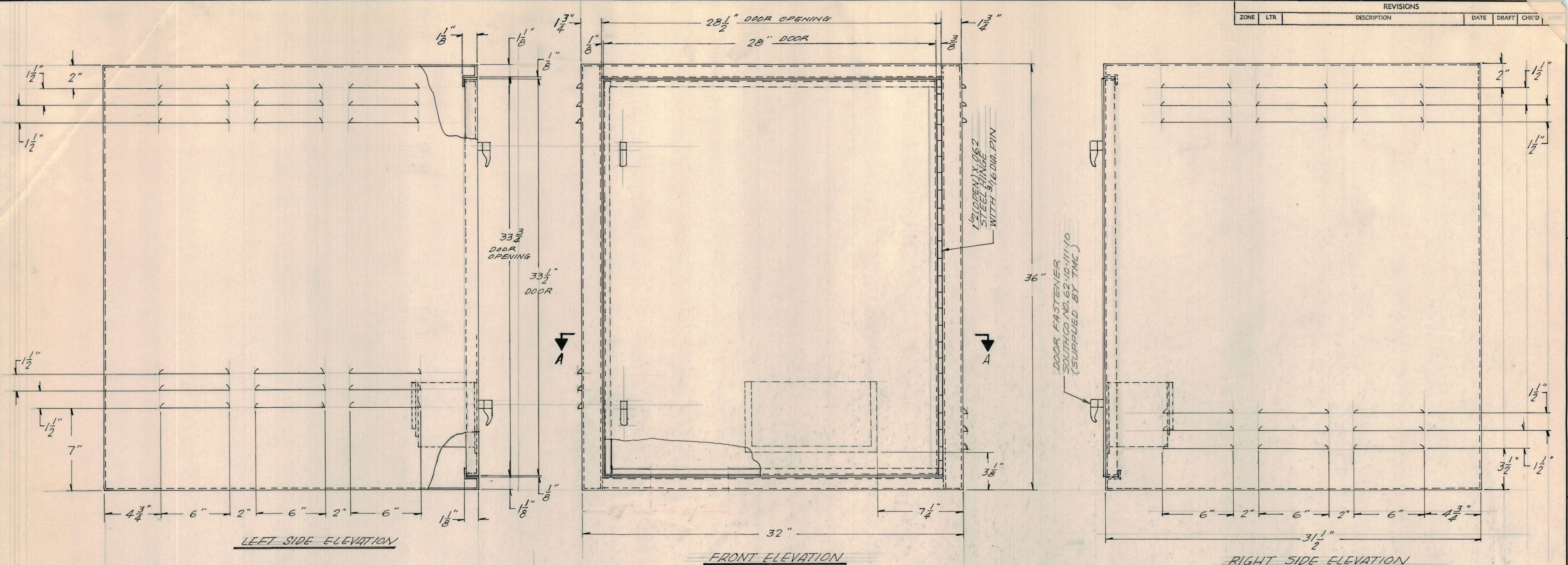


REVISIONS					
ZONE	LTR	DESCRIPTION	DATE	DRAFT	CHKD



- NOTES:**
1. WELD ALL JOINTS IN ACCORDANCE WITH AWS STANDARDS FOR WELDING
 2. ALL WELDS TO BE PROPERLY CLEANED
 3. ALL SURFACE WELDS TO BE GROUND SMOOTH
 4. REMOVE ALL BURRS AND SHARP EDGES
 5. CLEAN, PRIME AND PAINT IN ACCORDANCE WITH TMC SPECIFICATION P4000
 6. MATERIAL:
 - TOP, BOTTOM AND SIDES = .0749 (1.6 GA) C.R. STL.
 - DOOR = .105 (12 GA) C.R. STL.
 - INTERIOR COMPONENT PANEL = .1196 (11 GA) C.R. STL.

QTY REQ	QTY REQ	QTY REQ	ITEM	PART NO.	MANUFACTURER	DESCRIPTION	SYM
PARTS LIST							
THE TMC SYSTEMS AND POWER CORPORATION SPRINGFIELD, VIRGINIA							
CONTROL CABINET FABRICATION ASSEMBLY							
DRAWN FRAMPTON		DATE 11-15-73		SIZE D		CODE IDENT NO 24146	
CHECKED EJH		DATE 11-15-73		DWG. NO. MS6177		REV	
D. ENG. WJ		DATE 12-7-73		SCALE 1/4" = 1"		SHEET 1 OF 4	
P. ENG. ESF		DATE 12-10-73		DATE 12-11-73			
P. MGR.		DATE					
CHIEF, ENG. DEPT. D. Woodard		DATE					

INTERPRET DRAWING PER LISTED DOCUMENTS

UNLESS OTHERWISE SPECIFIED DIMENSIONS ARE IN INCHES AND INCLUDE CHEMICALLY APPLIED OR PLATED FINISHES REMOVE ALL BURRS AND SHARP EDGES

TOLERANCES ON

FRACTIONS	ANGLES	DECIMALS
$\pm 1/32$	$1/2^\circ$	

MATERIAL
SEE NOTE 6

FINISH
SEE NOTE 5

NOTICE TO PERSONS RECEIVING THIS DRAWING
THE TMC SYSTEMS AND POWER CORPORATION claims proprietary right in the material disclosed hereon. This drawing is issued in confidence for engineering information only and may not be reproduced or used to manufacture anything shown hereon without permission from THE TMC SYSTEMS AND POWER CORPORATION to the user. This drawing is loaned for mutual assistance and is subject to recall at any time.