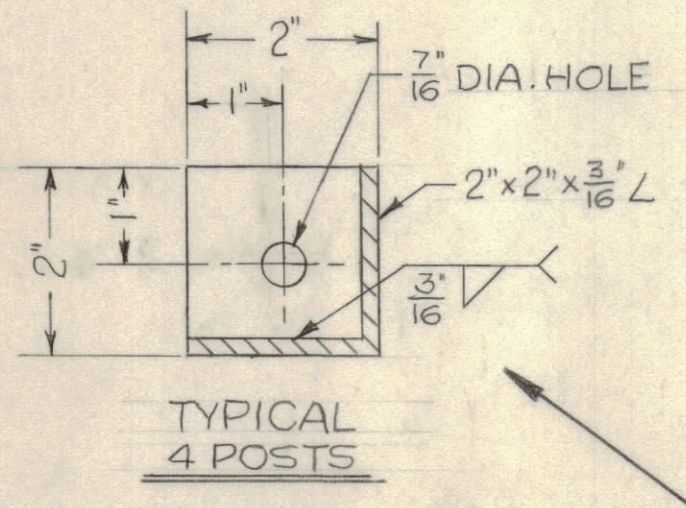
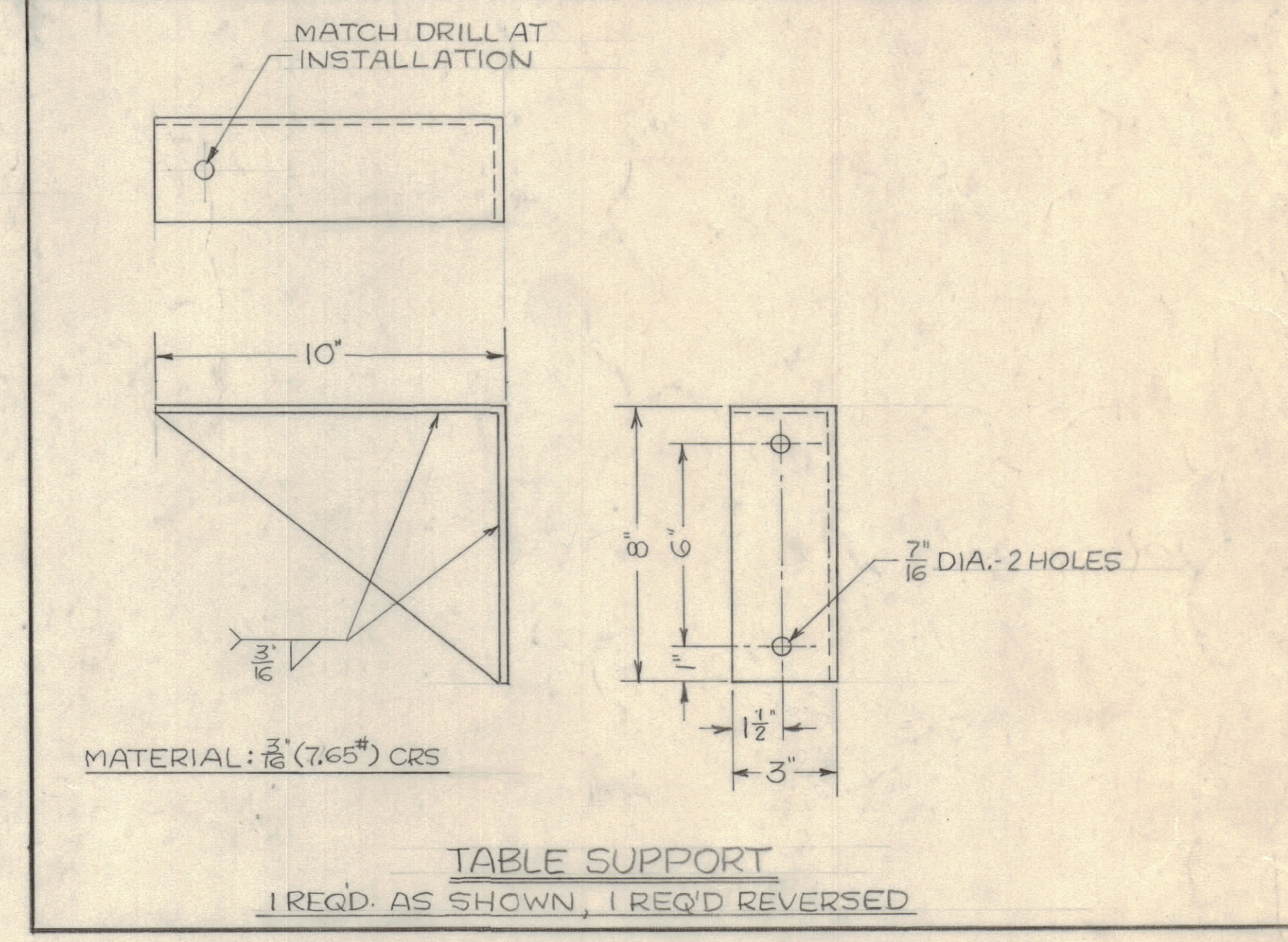
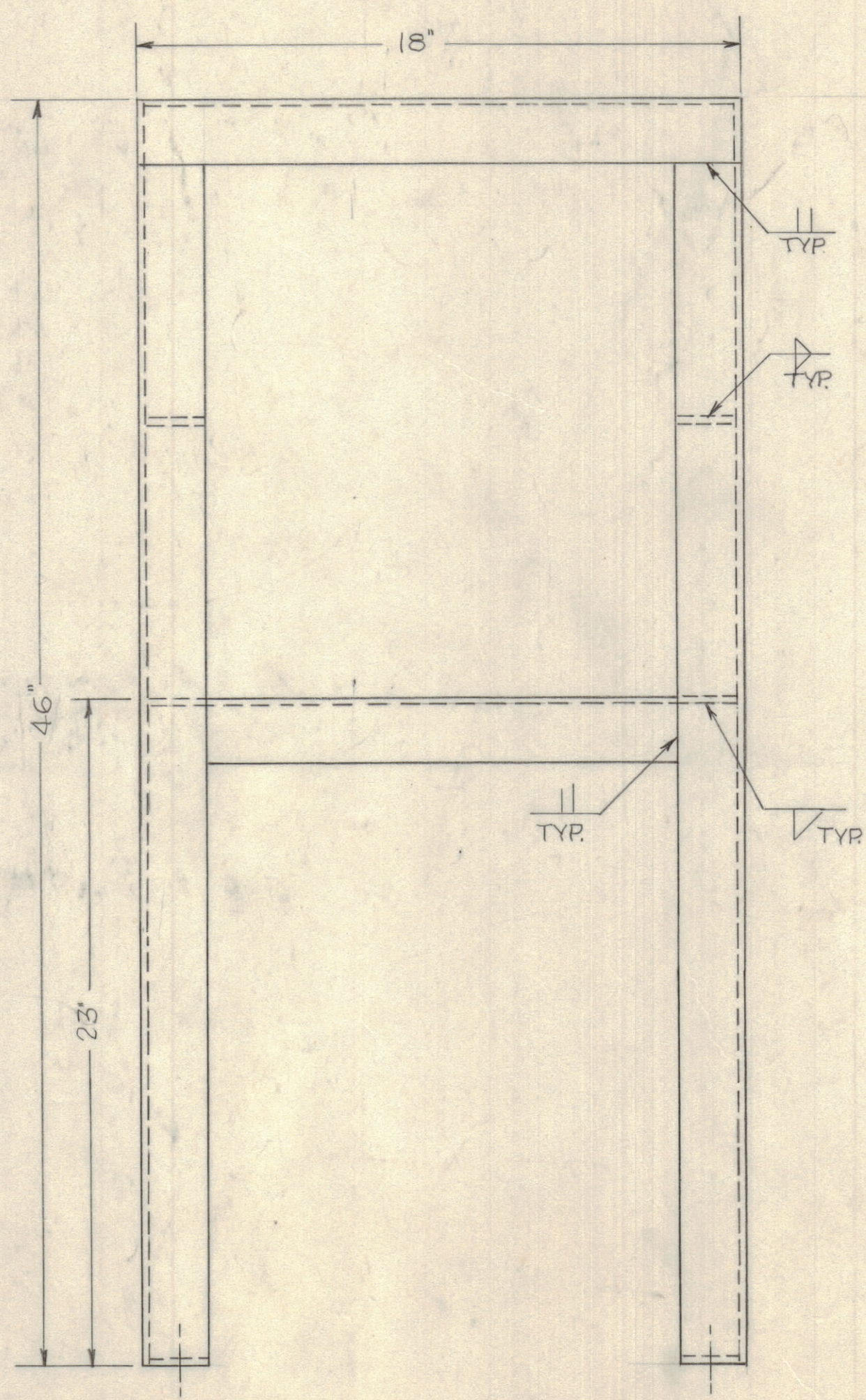
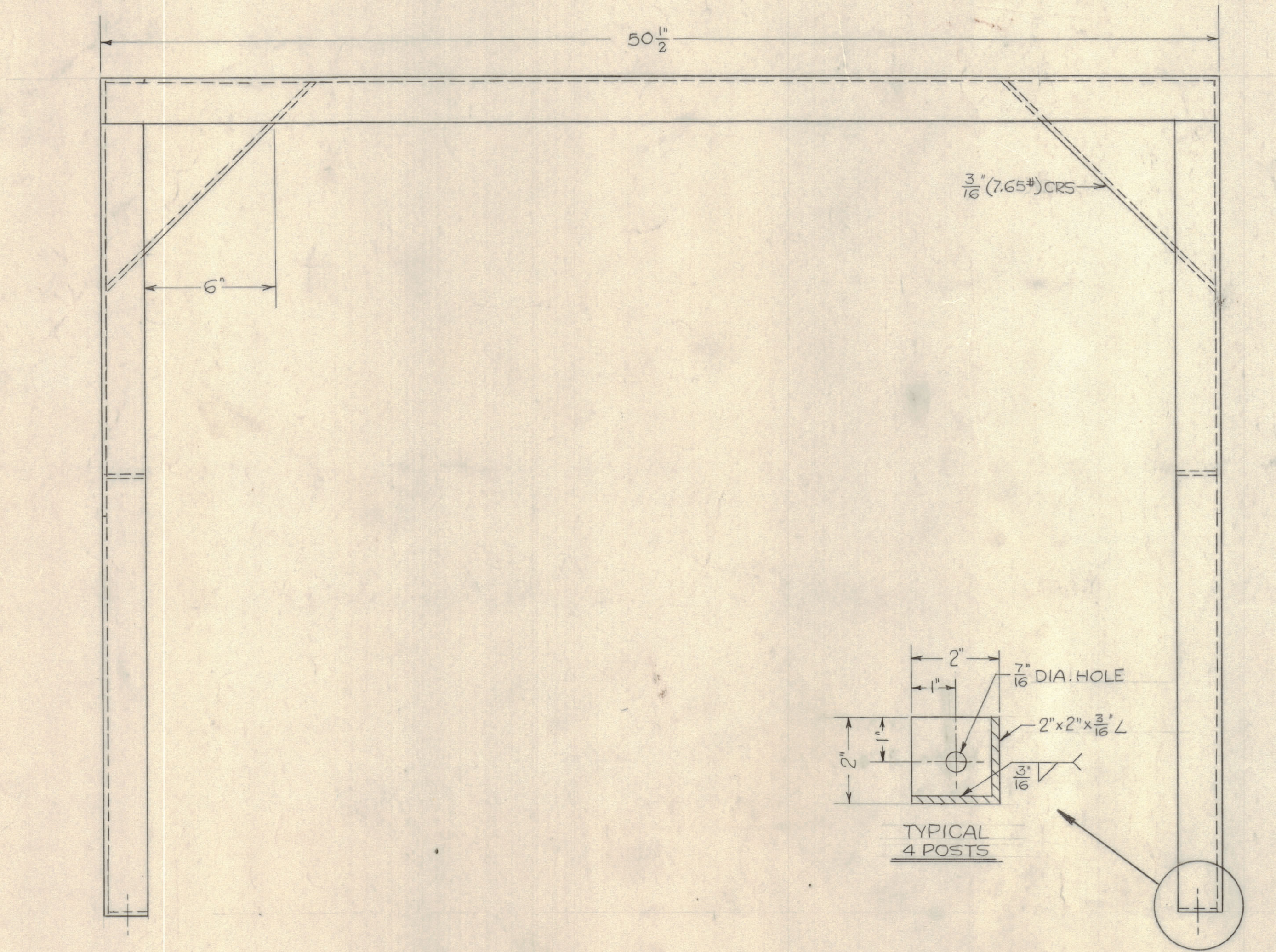
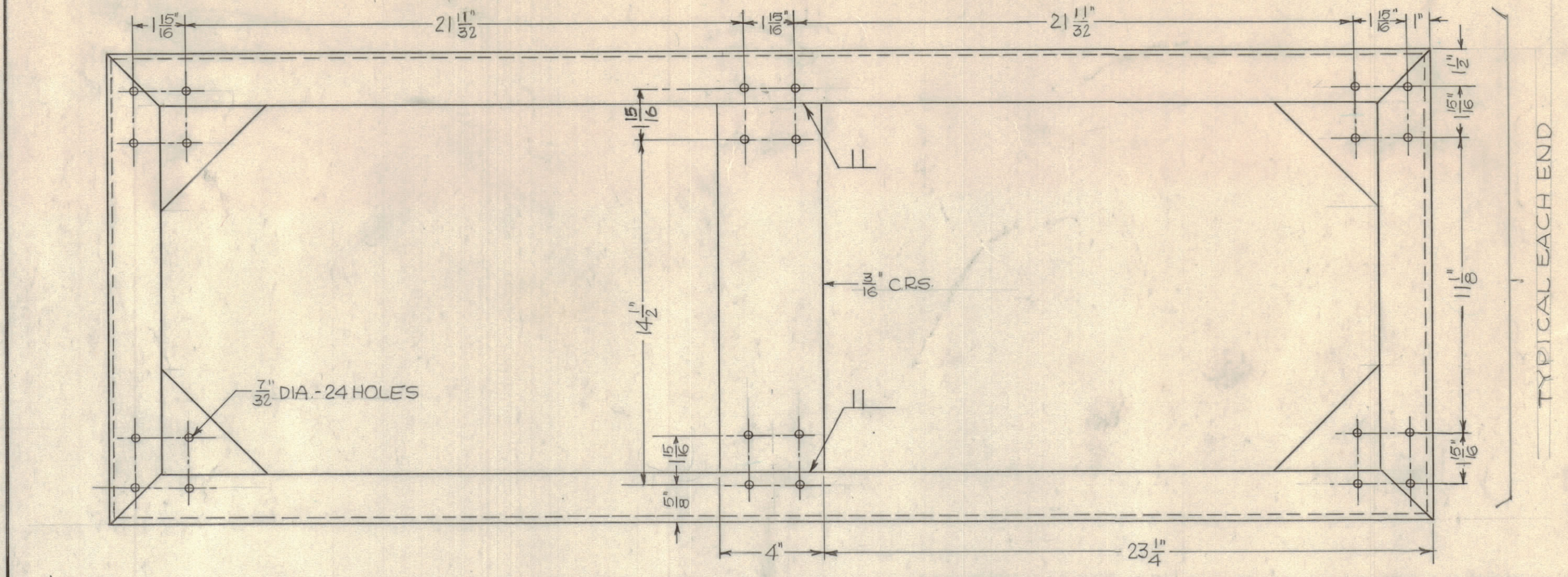
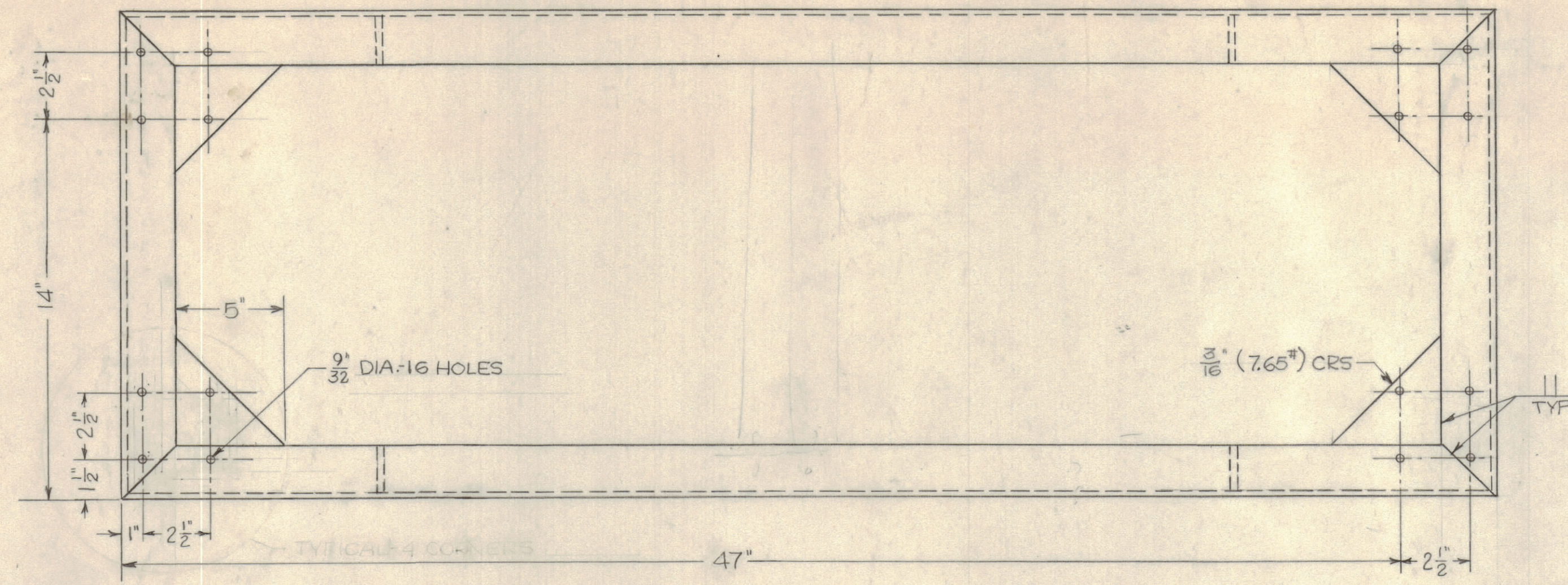


REVISIONS						
ZONE	LTR	DESCRIPTION	DATE	DRAFT	CHK'D	APP'D
	A	ADDED BOOKW. MFG. DIM. FOR DC CONTROL CABINET	6/13/73	EMF	WJ	R.C.

425KW
EGS500B

DETAIL A
500KW
EGS500B-1



- NOTES:
1. WELD ALL JOINTS IN ACCORDANCE WITH AWS STANDARD.
 2. REMOVE ALL BURRS & SHARP EDGES.
 3. PROPERLY CLEAN, PRIME & PAINT IN ACCORDANCE TMC SPECIFICATION NO. P4000.

QTY REQ	QTY REQ	QTY REQ	ITEM	PART NO.	MANUFACTURER	DESCRIPTION	SYM	
PARTS LIST								
			DRAWN FERNANDEZ	DATE 11/28/72	THE TMC SYSTEMS AND POWER CORPORATION SPRINGFIELD, VIRGINIA			
			CHECKED WJ	DATE 6-15-73				
			D. ENG.	DATE				
			P. ENG. CRB	DATE NOV 72				
			P. MGR.	DATE	TABLE SADDLE DC CONTROL CABINET			
			CHIEF, ENG. DEPT.	DATE	SIZE D	CODE IDENT NO 24146	DWG. NO. MS6147	REV A
					SCALE	SHEET 1 OF 1		

INTERPRET DRAWING PER LISTED DOCUMENTS

UNLESS OTHERWISE SPECIFIED DIMENSIONS ARE IN INCHES AND INCLUDE CHEMICALLY APPLIED OR PLATED FINISHES REMOVE ALL BURRS AND SHARP EDGES

TOLERANCES ON
FRACTIONS ANGLES DECIMALS

MATERIAL
2" x 2" x 3/16" L

FINISH

NOTICE TO PERSONS RECEIVING THIS DRAWING
THE TMC SYSTEMS AND POWER CORPORATION claims proprietary right in the material disclosed hereon. This drawing is issued in confidence for engineering information only and may not be reproduced or used to manufacture anything shown hereon without permission from THE TMC SYSTEMS AND POWER CORPORATION to the user. This drawing is loaned for mutual assistance and is subject to recall at any time.