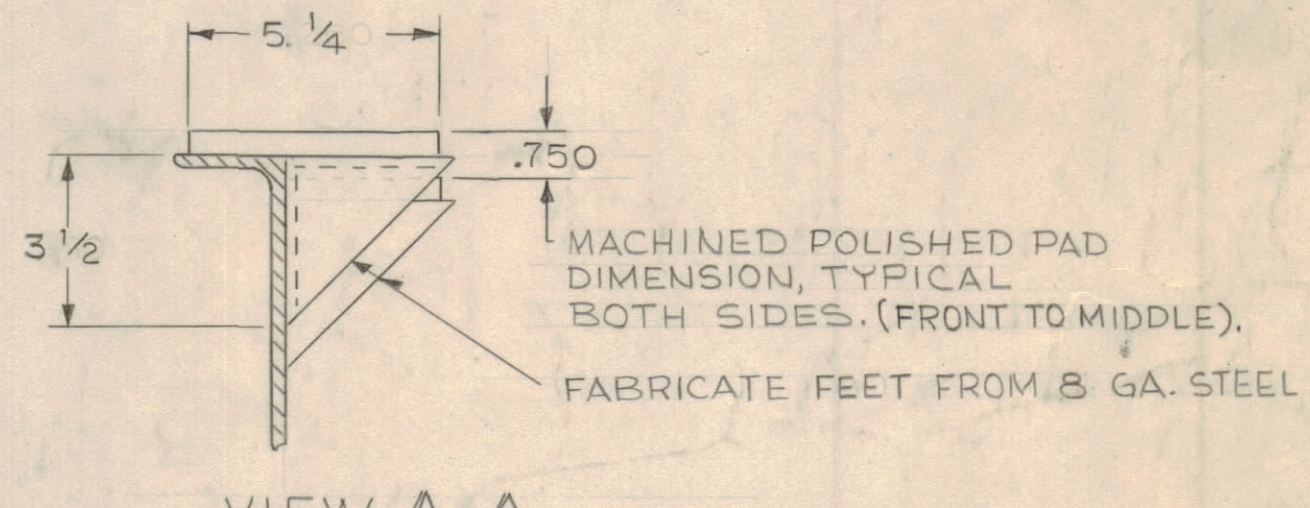
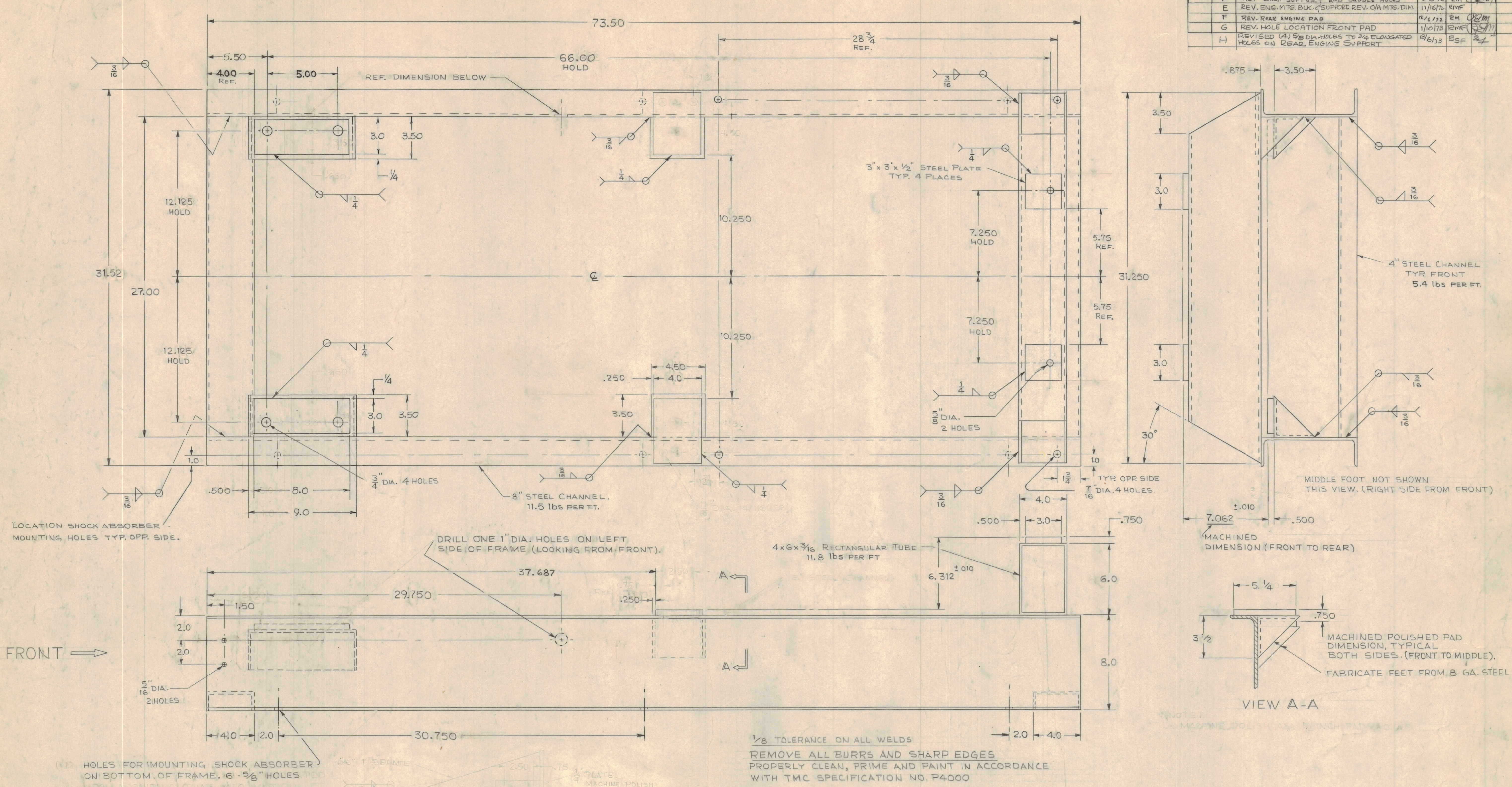


I DELETED REAR ENGINE SUPPORT DETAIL (SEE MS 6176) 10/16/73 [initials]

REVISIONS						
ZONE	LTR	DESCRIPTION	DATE	DRAFT	CHK'D	APP'D
	A	ADDED PAINT SPEC.	8-2-72	RM		
	B	CHG. TOL.	8-16-72	RM		
	C	REV. TO ORIGINAL DESIGN	8-23-72	RM		
	D	REV. ENG. SUPPORT AND SADDLE HOLES	9-18-72	RM		
	E	REV. ENG. MTS. BUCK SUPPORT REV. C/A MTS. DIM.	11/16/72	RMF		
	F	REV. REAR ENGINE PAD	12/6/72	RM		
	G	REV. HOLE LOCATION FRONT PAD	1/10/73	RMF		
	H	REVISED (4) 5/8 DIA. HOLES TO 3/4 ELONGATED HOLES ON REAR ENGINE SUPPORT	8/6/73	ESF		



NOTE: REFER TO DWG. MS6176 FOR REAR ENGINE SUPPORT

NOTE: 1" DIA. HOLE TO BE DRILLED IN ONE SUPPORT ONLY. WEB OF 4"x6"x1/2" BEAM TO BE DRILLED TO ALLOW THROUGH HOLE

(4) 5/8 x 3/4 ELONGATED HOLES

REAR ENGINE SUPPORT (2 REQ.) (SEE MS 6176)

QTY REQ	QTY REQ	QTY REQ	ITEM	PART NO.	MANUFACTURER	DESCRIPTION	SYM
PARTS LIST							
				THE TMC SYSTEMS AND POWER CORPORATION SPRINGFIELD, VIRGINIA			
				FRAME 50 KW ENGINE GENERATOR SET FOR FAA UNIT.			
				SIZE	CODE IDENT NO	DWG. NO.	REV
				D	24146	MS6131	I
				SCALE			SHEET 1 OF 1

INTERPRET DRAWING PER LISTED DOCUMENTS

UNLESS OTHERWISE SPECIFIED DIMENSIONS ARE IN INCHES AND INCLUDE CHEMICALLY APPLIED OR PLATED FINISHES REMOVE ALL BURRS AND SHARP EDGES

TOLERANCES ON

FRACTIONS	ANGLES	DECIMALS
± 1/16	± 2°	0.020
LESS NOTED		

MATERIAL NOTED

FINISH NOTED

NOTICE TO PERSONS RECEIVING THIS DRAWING THE TMC SYSTEMS AND POWER CORPORATION claims proprietary right in the material disclosed herein. This drawing is issued in confidence for engineering information only and may not be reproduced or used to manufacture anything shown herein without permission from THE TMC SYSTEMS AND POWER CORPORATION to the user. This drawing is loaned for mutual assistance and is subject to recall at any time.

DRAWN MITCH DATE 7-18-72

CHECKED [initials] DATE 8/1/72

D. ENG. [initials] DATE 7-21-72

P. ENG. [initials] DATE 8/1/72

P. MGR. [initials] DATE

CHIEF, ENG. DEPT. DATE 8/1/72