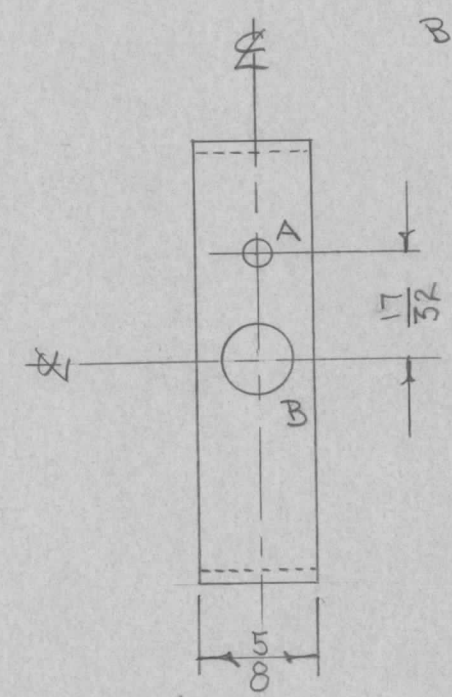
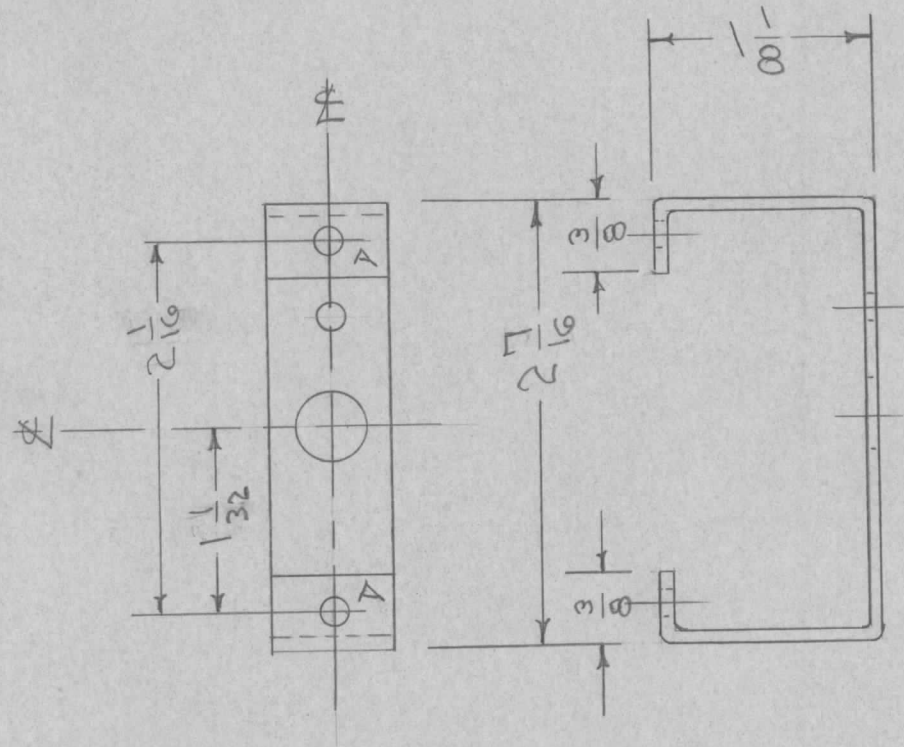


IF IT IS FOUND DESIRABLE TO CHANGE ANY TOLERANCE OR OTHER DETAIL SPECIFIED ON THIS DRAWING NOTIFY THE PURCHASER PROMPTLY.

MS-652 A

MAXIMUM ALLOWABLE TOLERANCES HAVE BEEN DETERMINED AND DEVIATIONS WILL BE CAUSE FOR REJECTION. REMOVE ALL BURRS AND SHARP EDGES

REQ. PER UNIT	USED ON			
	MODEL	PROJECT NO.	ASS'Y. NO.	DATE
1	FSS		A-1027	6-15-55



A - 5/32 (.156) D. 3 REQ.
 B - 3/8 (.375) D. 1 "

BLANK SIZE
 5 1/8 x 5/8

A	1	S404 - IRIDITE WAS S101 - CAUSTIC DIP	12-7 59	1001	P	EMN
ISSUE	ITEM	CHANGED FROM	DATE	CN. NO.	DRAFTS CHECKER	ENG. APP.

TOLERANCES		SCALE
ALL OTHERS	DEC. DIM. ± FRAC. DIM. ± 1/64 ANGULAR DIM. ±	DRILL, PUNCH, COMMERCIAL STOCK SIZES AND MANUFACTURERS TOLERANCES ARE NOT INCLUDED.

REQ.	ITEM	PART NO.	DESCRIPTION	SYMBOL
		.051	THE TECHNICAL MATERIEL CORP.	
		STOCK SIZE	MAMARONECK. NEW YORK	
	ALUMINUM	—H—	BRACKET, TIME BASE	
	MATERIAL	WEIGHT PER PC.	SWITCH	FSS
		52S H32		
		TYPE & TEMPER	6-15-55	DB
			DRAWN	ELEC. DES. APP. MECH. DES. APP.
			FADE	K2 A.J.J.
		HEAT TREAT. SPEC.	CHECKED	FINAL APPROVAL
		S404-IRIDITE		MS-652 A
		FINISH & SPEC. NO.		