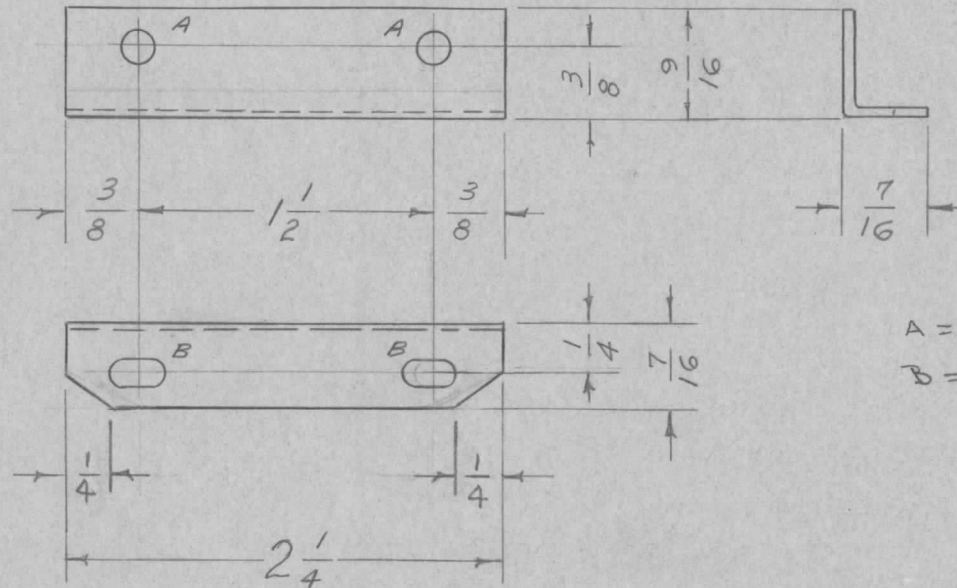


IF IT IS FOUND DESIRABLE TO CHANGE ANY TOLERANCE OR OTHER DETAIL SPECIFIED ON THIS DRAWING NOTIFY THE PURCHASER PROMPTLY.

MAXIMUM ALLOWABLE TOLERANCES HAVE BEEN DETERMINED AND DEVIATIONS WILL BE CAUSE FOR REJECTION. REMOVE ALL BURRS AND SHARP EDGES

MS-642 A

REQ. PER UNIT	USED ON			
	MODEL	PROJECT NO.	ASS'Y. NO.	DATE
2	XFK		A-627	4-21-55



A =  $\frac{1}{64}$  (.171) D, 2 HOLES  
 B =  $\frac{9}{64} \times \frac{9}{32}$  SLOTS, 2 SLOTS

REQ.	ITEM	PART NO.	DESCRIPTION	SYMBOL
		.051	THE TECHNICAL MATERIEL CORP. MAMARONECK, NEW YORK	BRACKET, 200KC OVEN
		STOCK SIZE		
		ALUMINUM — # —		
		MATERIAL	WEIGHT PER PC.	
A	1	5052 H32		
		TYPE & TEMPER		
		— # —		
		HEAT TREAT. SPEC.		
		S404-IRIDITE		
		FINISH & SPEC. NO.		

ISSUE	ITEM	CHANGED FROM	DATE	CN. NO.	DRAFTS	CHECKER	ENG. APP.
A	1	S404-IRIDITE WAS S101 EAUSTIC DIP	12-7 59	1001	P		EMN
TOLERANCES		SCALE					
ALL OTHERS	DEC. DIM. $\pm$ FRAC. DIM. $\pm \frac{1}{64}$ ANGULAR DIM. $\pm$	DRILL, PUNCH, COMMERCIAL STOCK SIZES AND MANUFACTURERS TOLERANCES ARE NOT INCLUDED.					

DRAWN: FAID  
 ELEC. DES. APP.: [Signature]  
 MECH. DES. APP.: [Signature]  
 CHECKED: [Signature]  
 FINAL APPROVAL: [Signature]  
 MS-642 A