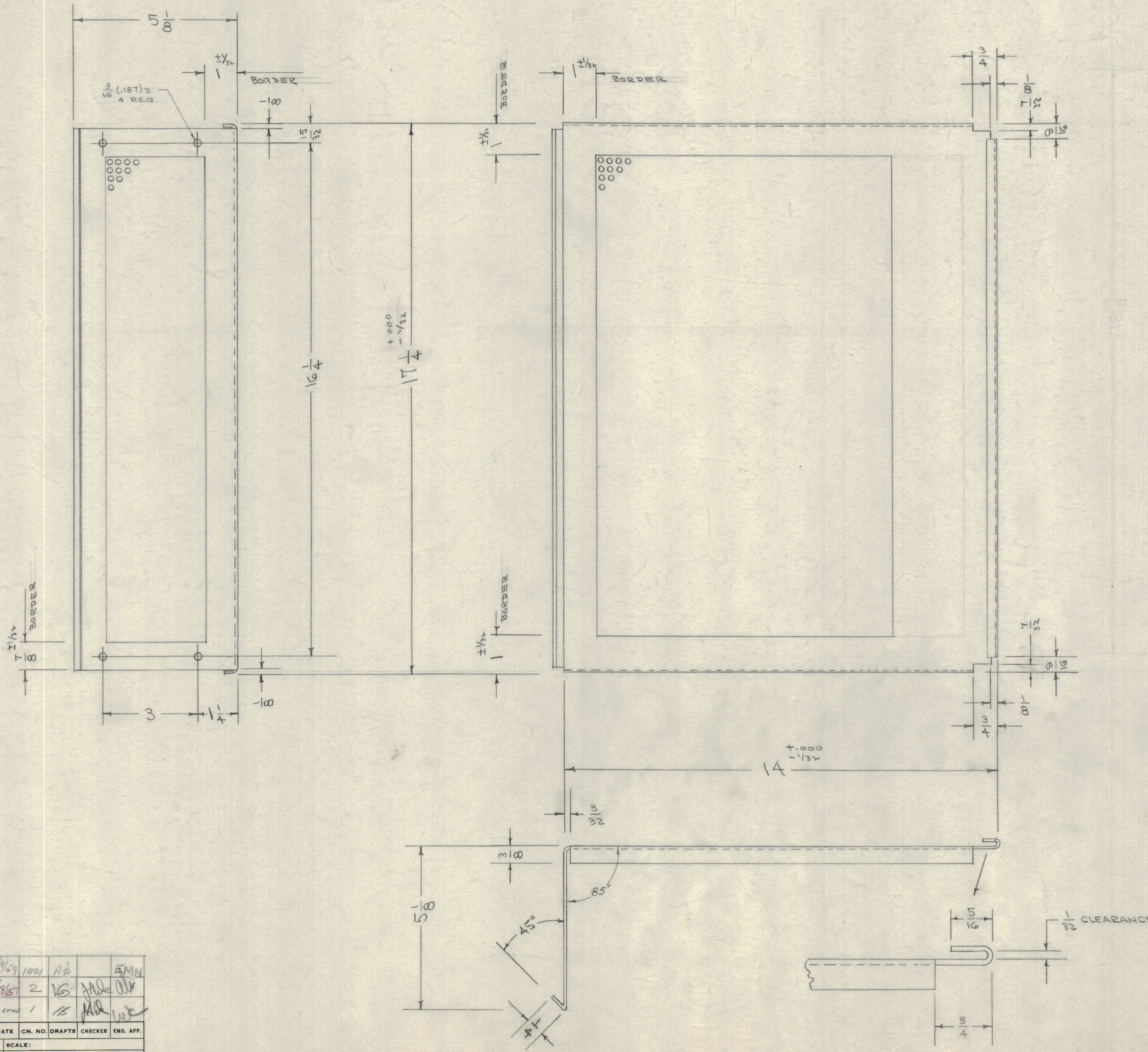


IF IT IS FOUND DESIRABLE TO CHANGE ANY TOLERANCE OR OTHER DETAIL SPECIFIED ON THIS DRAWING NOTIFY THE PURCHASER PROMPTLY.
 MAXIMUM ALLOWABLE TOLERANCES HAVE BEEN DETERMINED AND DEVIATIONS WILL BE CAUSE FOR REJECTION. REMOVE ALL BURRS AND SHARP EDGES

MS-639 C



NOTICE TO PERSONS RECEIVING THIS DRAWING
 THE TECHNICAL MATERIEL CORPORATION claims proprietary right in the material disclosed herein. This drawing is issued in confidence for engineering information only and may not be reproduced or used to manufacture anything shown hereon without permission from THE TECHNICAL MATERIEL CORPORATION to the user. This drawing is loaned for mutual assistance and is subject to recall at any time.
 Property of:-
 THE TECHNICAL MATERIEL CORPORATION
 MAMARONECK, NEW YORK

C	1	S-404 IRIDITE WAS S-101 CAUSTIC DIP	4/9/57	1001	AB		EMN
B	1	BLANK LAYOUT DELETED REF. ADDED	4/18/57	2	16		
A	2	DIM. ERROR CORRECTED	5-10-57	1	16		
	1	85° & 1.000 ADDED					

ALL OTHERS	DEC. DIM. ± 1/16 FRAC. DIM. ± 1/64 ANGULAR DIM. ±	DRILL PUNCH, COMMERCIAL STOCK SIZES AND MANUFACTURERS TOLERANCES ARE NOT INCLUDED.
------------	---	--

REF. - USE MS-1162 AS BLANK SIZE (1 SIZE)

REQ. ITEM	PART NO.	DESCRIPTION	SYMBOL
.051		THE TECHNICAL MATERIEL CORP. MAMARONECK, NEW YORK	
ALUMINUM	#	TOP COVER	
525H32		GPR (R)	
TYPE & TEMPER	DATE	ELEC. DES. APP.	MECH. DES. APP.
	4-8-55		
HEAT TREAT. SPEC.	CHECKED	FINAL APPROVAL	
S-404 IRIDITE		MS-639 C	
FINISH & SPEC. NO.			

1	GPR (R)	297	4-8-55
REQ PER UNIT	MODEL	PROJECT NO.	DATE
		ASS'Y. NO.	USED ON