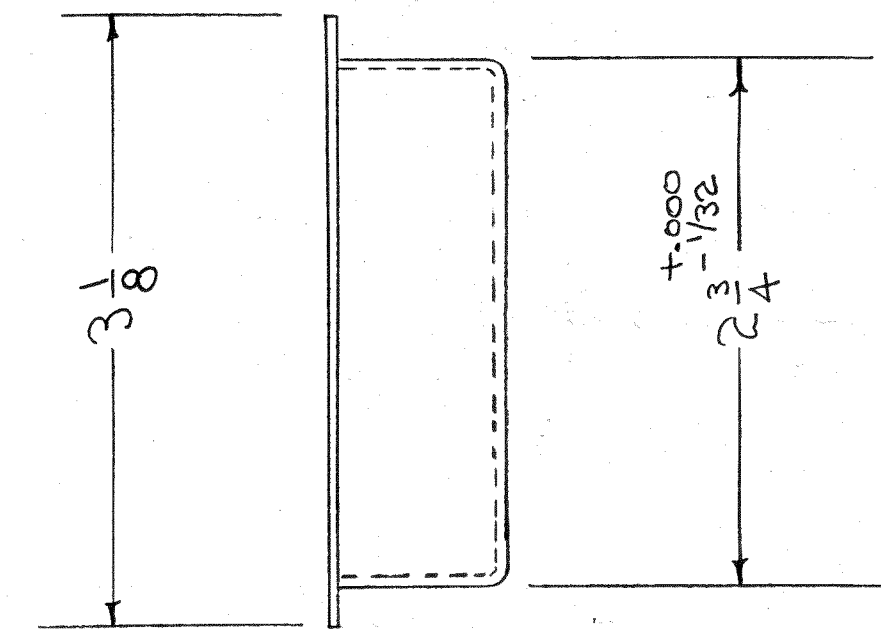
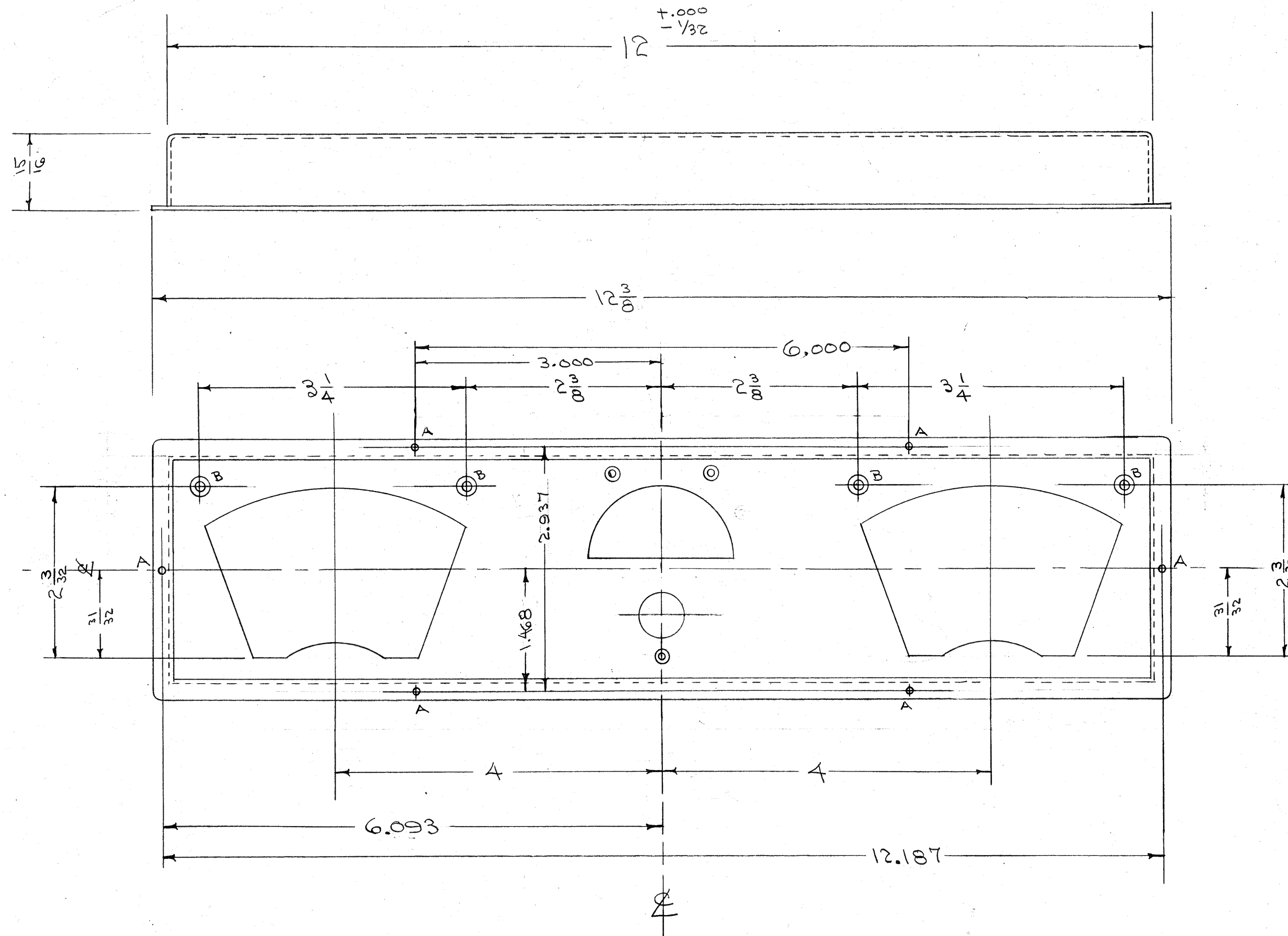


IF IT IS FOUND DESIRABLE TO CHANGE ANY TOLERANCE OR OTHER DETAIL SPECIFIED ON THIS DRAWING NOTIFY THE PURCHASER PROMPTLY.
 MAXIMUM ALLOWABLE TOLERANCES HAVE BEEN DETERMINED AND DEVIATIONS WILL BE CAUSE FOR REJECTION. REMOVE ALL BURRS AND SHARP EDGES

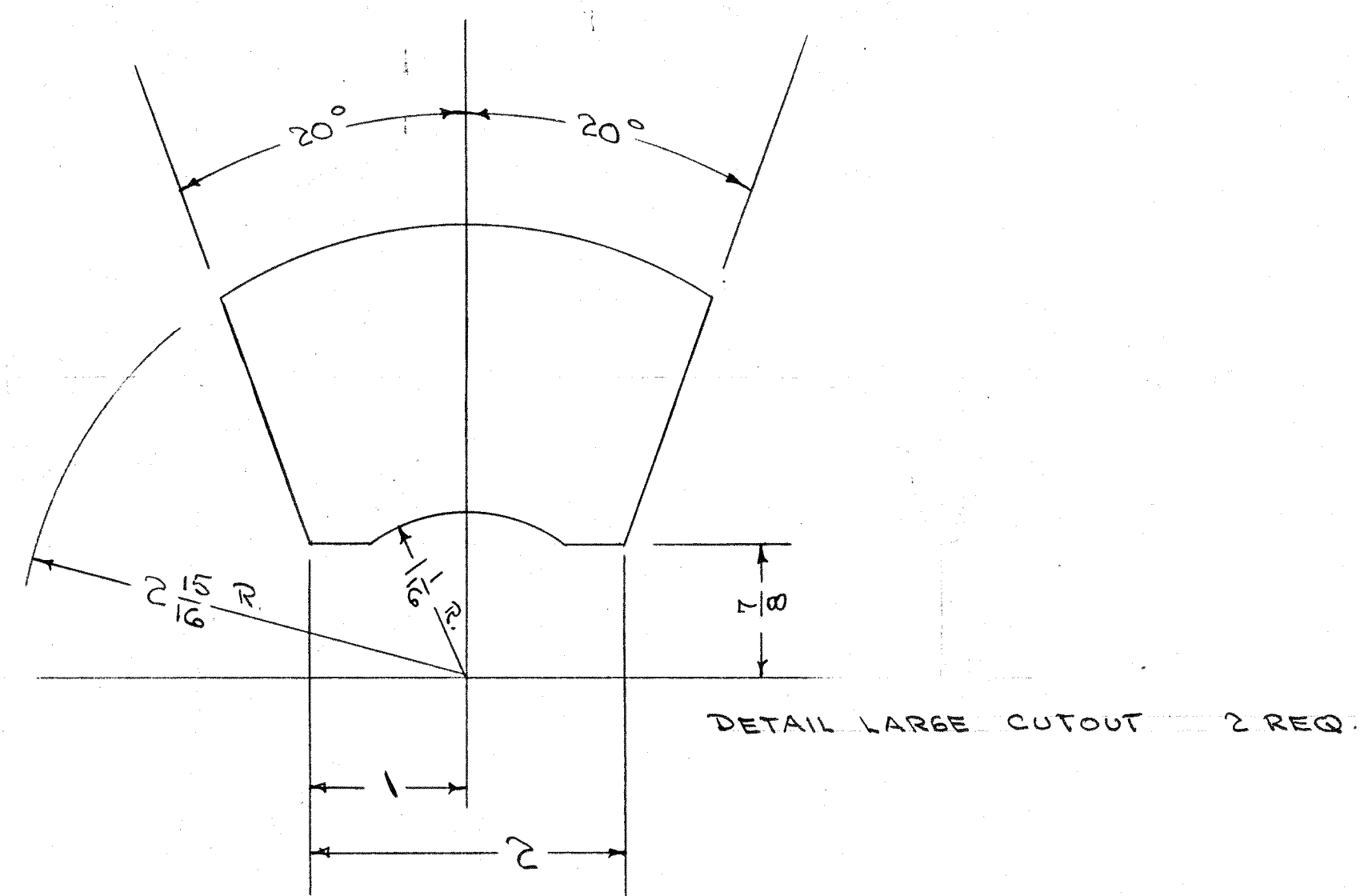
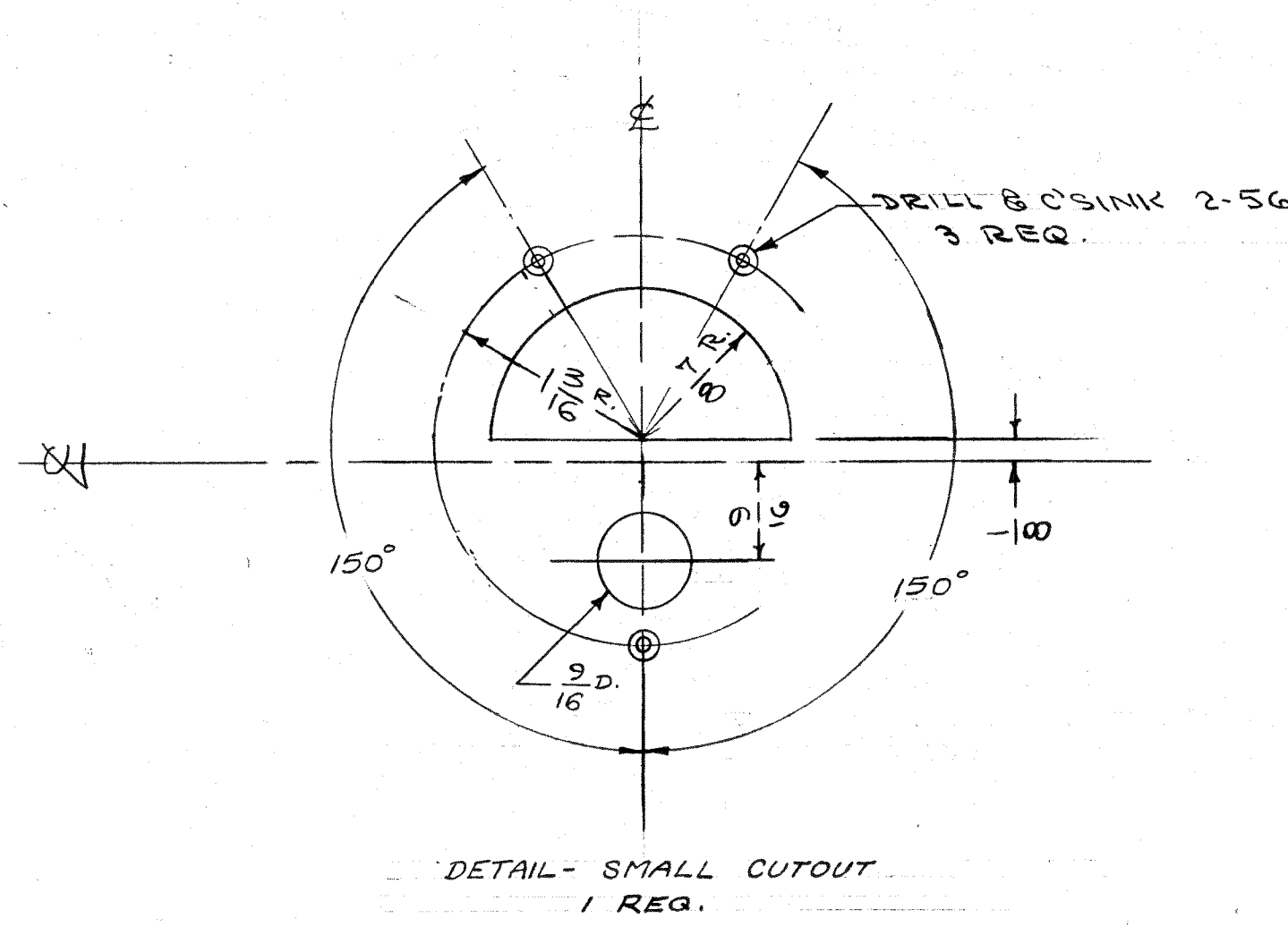
NOTE TO PERSONS RECEIVING THIS DRAWING

THE TECHNICAL MATERIEL CORPORATION claims proprietary right in the material disclosed hereon. This drawing is loaned in confidence for engineering information only and may not be reproduced or used to manufacture copies shown hereon without permission from THE TECHNICAL MATERIEL CORPORATION to the user. It is loaned for mutual assistance and is subject to recall at any time.

Property of:
 THE TECHNICAL MATERIEL CORPORATION
 MAMARONECK, NEW YORK



A - No. 38 (.101) D. 6 HOLES REQ.
 B - DRILL & CSINK #4 F.H.S. 4 " " "



NOTE: FINISH
 S-404 IRIDITE
 S-114 PRIMER
 S-220 P.CAF GRAY.
 OR PRIME & PAINT TO CUSTOMER'S SPECIFICATIONS

ISSUE	ITEM	CHANGED FROM	DATE	CN. NO.	DRAFTS	CHECKER	ENG. APP.
H	1	S-404 IRIDITE WAS S-101 CAUSTIC DIP	12/16/69	1001	AB		EMN
G	1	120° CHORD BACK TO 150° (SEE REV. D) "D" REV. WAS NEVER MADE	4/17/69	57	7	16	JAL
F	1	DIMENSIONS AND DIMENSIONING CHANGED	4/22/69	6	ESD	JAL	WJZ
E	2	3/8 DIM. DELETED	6/13/64	5	JAL	ESD	WJZ
D	1	2-56 CSINK 106.63	7/22/64	4	73	JAL	WJZ
C	2	REF. LINE DELETED	4/1/64	3	ESD	JAL	WJZ
B	1	3/32 DIM. ADDED	6/11/55	2	78	JAL	WJZ
A	1	PAINT SPEC. CHANGED	4/1/55	1	ESD	JAL	GT.O

REF. DWG. MS-607

REQ. ITEM	PART NO.	DESCRIPTION	SYMBOL
.064		THE TECHNICAL MATERIEL CORP. MAMARONECK, NEW YORK	
ALUMINUM	II	ESCUTCHEON	
MATERIAL	WEIGHT PER PC	FRONT PANEL	
250			
TYPE & TEMPER	C.D.B. 2-29-55	III	WJZ
HEAT TREAT. SPEC.		GT.O	
SEE NOTE		CHECKED	FINAL APPROVAL
			MS-623 H

REQ. PER UNIT	MODEL	PROJECT NO.	ASSY. NO.	DATE
1	GPR	297		2-28-55

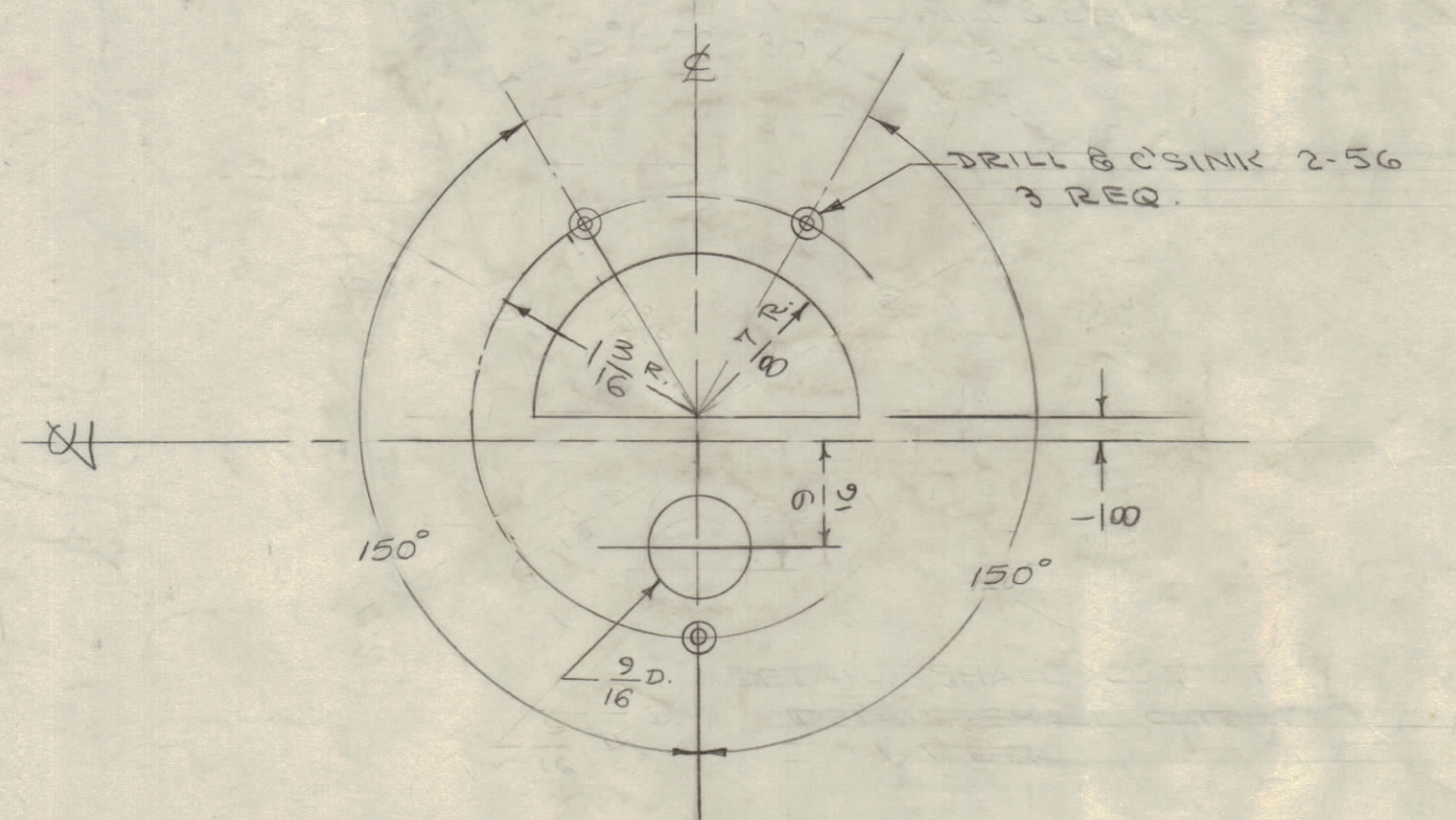
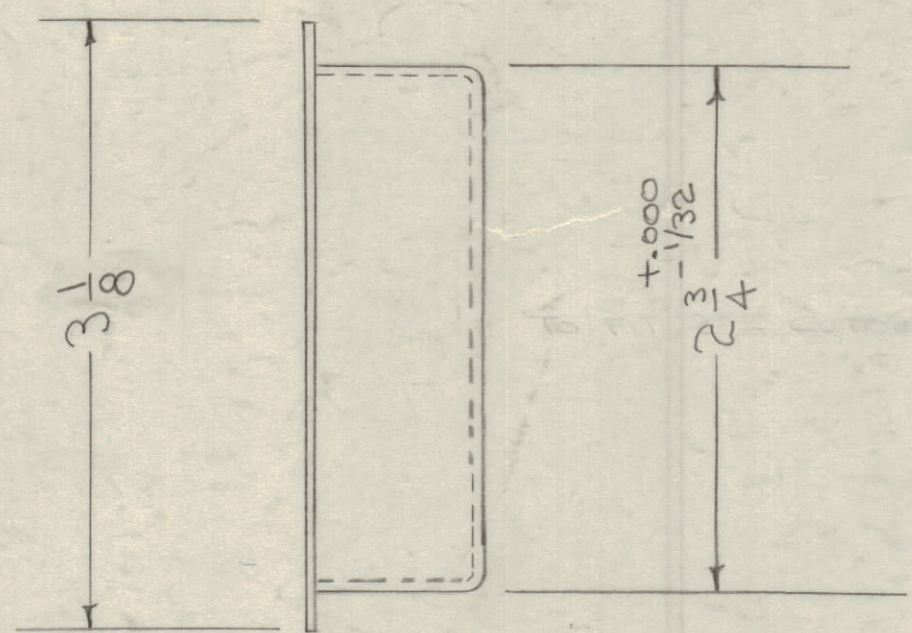
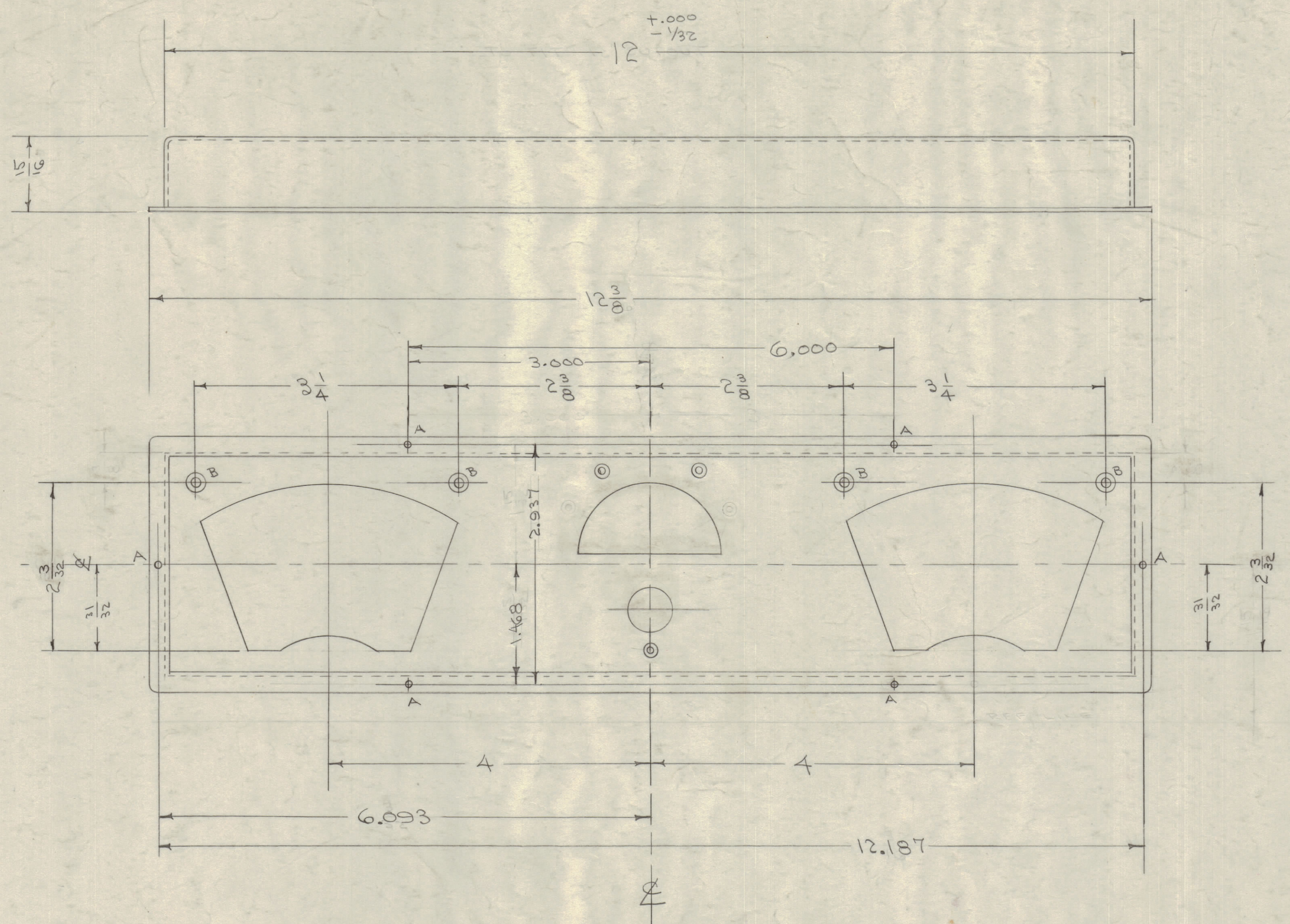
MS-623 H

IF IT IS FOUND DESIRABLE TO CHANGE ANY TOLERANCE OR OTHER DETAIL SPECIFIED ON THIS DRAWING NOTIFY THE PURCHASER PROMPTLY.
 MAXIMUM ALLOWABLE TOLERANCES HAVE BEEN DETERMINED AND DEVIATIONS WILL BE CAUSE FOR REJECTION. REMOVE ALL BURRS AND SHARP EDGES

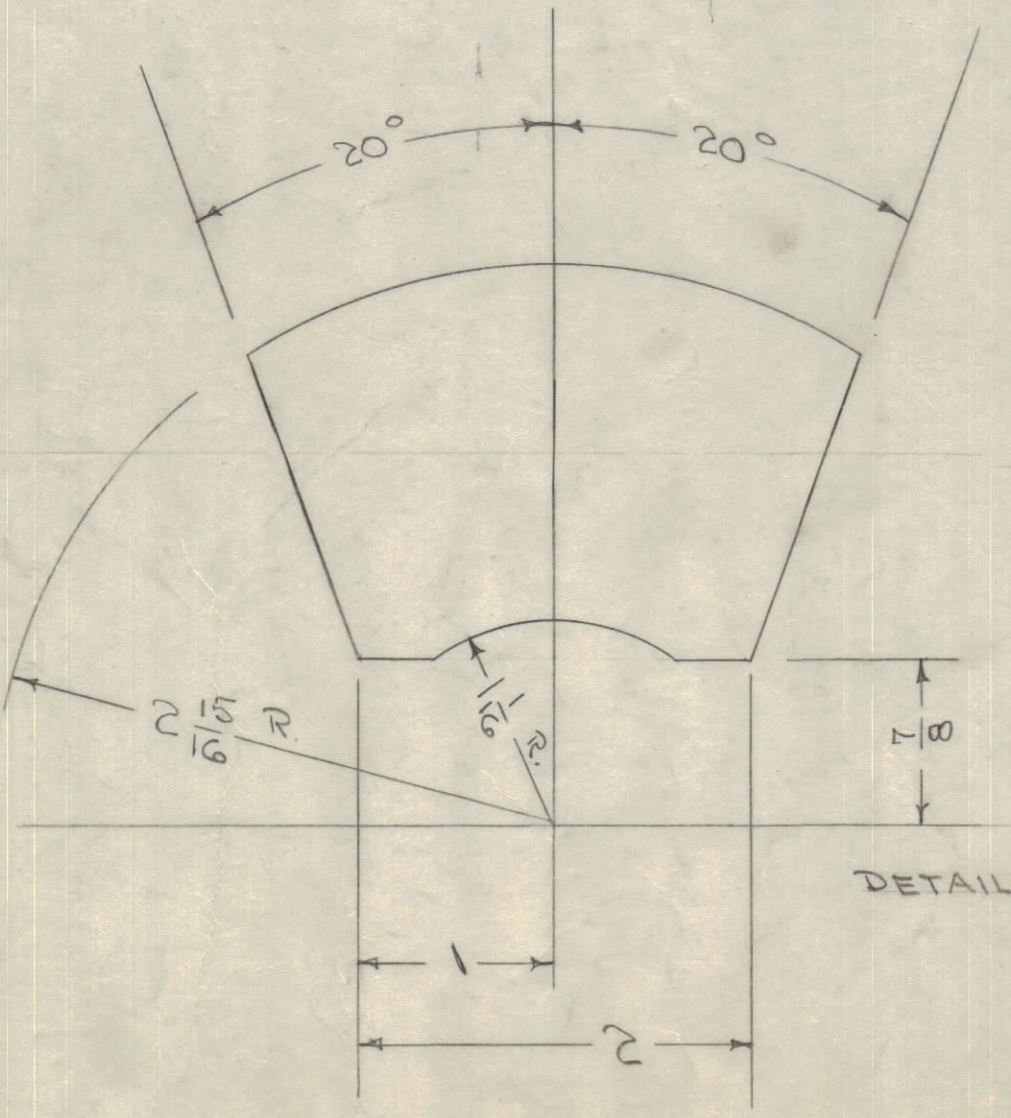
NOTICE TO PERSONS RECEIVING THIS DRAWING

THE TECHNICAL MATERIEL CORPORATION claims proprietary right in the material disclosed herein. This drawing is issued in confidence for engineering information only and may not be reproduced or used to manufacture anything shown hereon without permission from THE TECHNICAL MATERIEL CORPORATION to the user. This drawing is loaned for mutual assistance and is subject to recall at any time.

Property of:
 THE TECHNICAL MATERIEL CORPORATION
 MAMARONECK, NEW YORK



DETAIL - SMALL CUTOUT
 1 REQ.



DETAIL LARGE CUTOUT 2 REQ.

NOTE: FINISH
 S-404 IRIDITE
 S-114 PRIMER
 S-220 RCAF GRAY.
 OR PRIME & PAINT TO CUSTOMERS SPECIFICATIONS

REF. DWG. MS-607

ISSUE	ITEM	CHANGED FROM	DATE	CN. NO.	DRAFTS	CHECKER	ENG. APP.
H	1	S-404 IRIDITE WAS S-101 CAUSTIC DIP	12/18/69	1001	AB		EMN
G	1	120° CHAMFER BACK TO 150° (SEE REV. 'D') 'D' REV. WAS NEVER MADE	1/17/69	7	16		
F	1	DIMENSIONS AND DIMENSIONING CHANGED	6/26/68	6			
E	2	3/16" DIM. DELETED	6/13/68	5			
D	1	2-56 CSINE HOLES WERE DELETED	7-22-68	4			
C	2	REF. LINE SELECTED	1/1/68	3			
B	1	#38 DRILL WAS #44	6/17/68	2			
A	1	PAINT SPEC. CHANGED	1/1/68	1			GT.O

ALL OTHERS	TOLERANCES	SCALE:
DEC. DIM. ± .005 FRAC. DIM. ± 1/64 ANGULAR DIM. ± 1°	DRILL PUNCH, COMMERCIAL STOCK SIZES AND MANUFACTURERS TOLERANCES ARE NOT INCLUDED.	

REQ. PER UNIT	MODEL	PROJECT NO.	ASSY. NO.	DATE
1	GFR	297		2-28-69

REQ. ITEM	PART NO.	DESCRIPTION	SYMBOL
	.064	THE TECHNICAL MATERIEL CORP. MAMARONECK, NEW YORK	
	ALUMINUM	ESCUTCHEON	
	250	FRONT PANEL	
		DRWN	ELEC. DES. APP. MECH. DES. APP.
		CHECKED	FINAL APPROVAL
			MS-623 H

MS-623 H