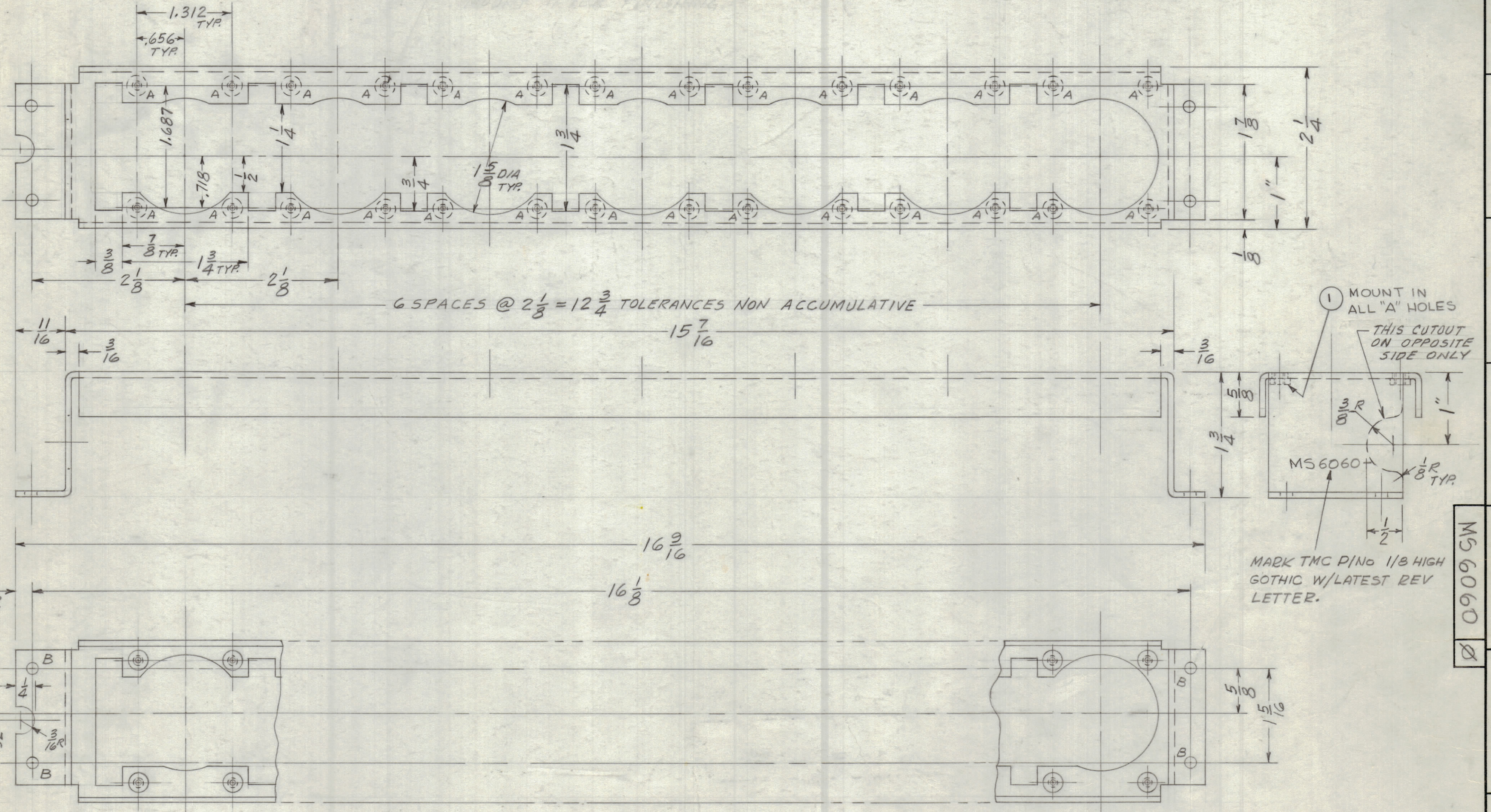


REVISIONS							
ZONE	SYM	DESCRIPTION	DATE	E.M.N. NO.	DRAFT	CHKD	APPD
	X	EXP. RELEASE	1-19-67		G.D.L.		
	XI	REMOVED HFSR-4	11-10-67		H.S.		
	Ø	ORIGINAL RELEASE FOR PRODUCTION	4/22/69		CU.		



~ HOLE ~
 A - .191 - .194 DIA. 28 REQ.
 B - 11/64 DIA 4 REQ.

UNLESS OTHERWISE SPECIFIED:
 1. USE MATERIAL THICKNESS FOR MAXIMUM RADIUS ON ALL BENDS
 2. ALL ANGULAR BENDS 90 DEGREES
 3. REMOVE ALL BURRS AND SHARP EDGES
 4. MOUNT INSERTS AFTER FINISHING

NOTES

1	MMX-()	BMA 105
1	VOX-7	BMA 114
QTY./UNIT	MODEL USED ON	ASS'Y. NO.
SCALE 1:1	CODE A	S401-451

THE CONTENTS OF THIS DRAWING ARE THE EXCLUSIVE PROPERTY OF THE TECHNICAL MATERIEL CORP. ITS UNAUTHORIZED USE OR REPRODUCTION IN WHOLE OR IN PART IS STRICTLY FORBIDDEN.

28	1	NT 129-632-4	NUT, PLN, SPLINE	A
REQ'D.	ITEM	PART NUMBER	DESCRIPTION	SYMBOL
O. POSE LIST OF MATERIAL SK3213 MS34				
MATERIAL .081 ALUMINUM 5052-H 32			THE TECHNICAL MATERIEL CORP. MAMARONECK, NEW YORK	
FINISH 5404 YEL. IRIDITE			TITLE BRACKET, AUTOMATED SWITCH	
UNLESS OTHERWISE SPECIFIED DIMENSIONS ARE IN INCHES AND INCLUDE CHEMICALLY APPLIED OR PLATED FINISHES		DRAWN GDL	DATE 1-19-67	FINAL APPROVAL
DECIMALS .X ± .05 .XX ± .01 .XXX ± .005		CHECKED	DATE 11-10-67	DATE 4/22/69
FRACTIONS ± 1/64 ANGLES ± 0° 30'		ELECT. DES.	DATE 7/21/69	MS6060
TOLERANCES		MECH. DES.	DATE	Ø
			SHEET	REV. LTR.