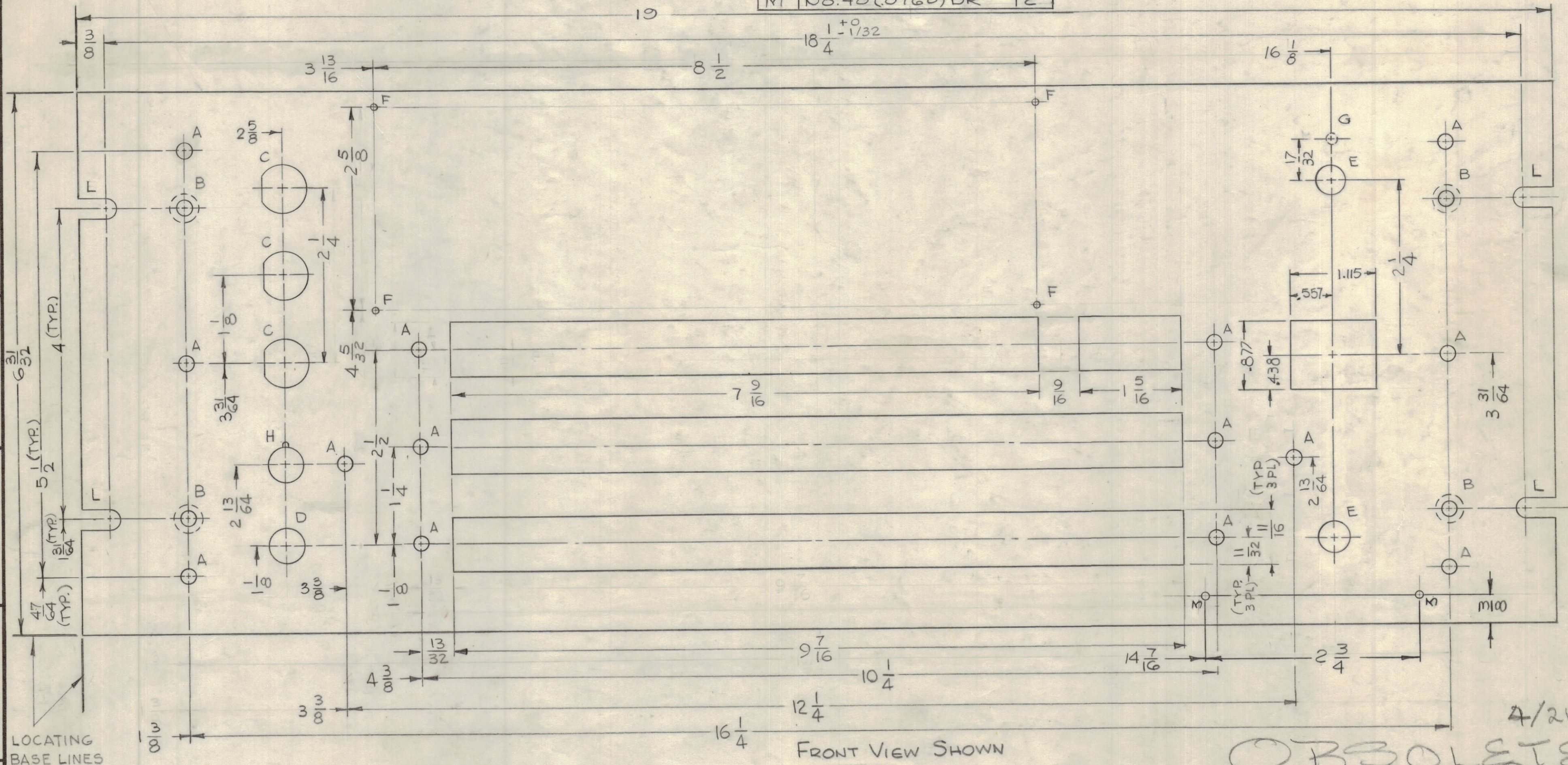
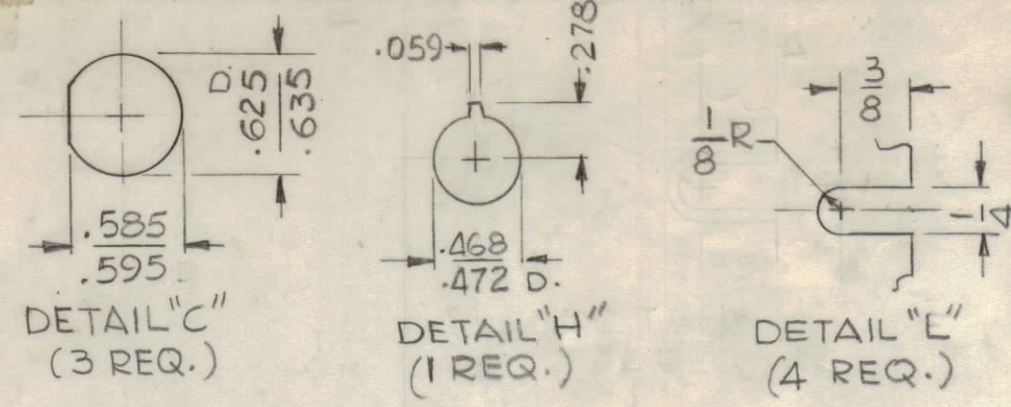


REVISIONS							
SYM	ZONE	DESCRIPTION	DATE	E.M.N. NO.	DRAFT	CHKD	APPD
X		EXPERIMENTAL RELEASE	1-31-67	-4-	lth		
X1		ADD 'M' HOLES	3-7-68				

HOLE	DESCRIPTION	REQ
A	13/64 DIA	14
B	.196 D & C'SK 82° TO .390 D, (ON REAR)	4
C	SEE DETAIL	3
D	15/32 DIA	1
E	13/32 DIA	2
F	.076 DIA	4
G	5/32 DIA X 1/8 DEEP ON REAR	1
H	SEE DETAIL	1
L	SEE DETAIL	4
M	NO. 48 (.0760) DR	2

PROTO-TYPE DRAWING
 NOT FOR PRODUCTION
 Engineering Approval Required For Release App. By



LOCATING BASE LINES

FRONT VIEW SHOWN

OBSOLETE

By S. Demario

4/21/69

MACHINING:

- MILL ALL EDGES.
- HOLES MUST BE DRILLED, UNLESS OTHERWISE SPECIFIED.
- LATERAL BOW OF PANEL MUST BE KEPT TO .031 TOLERANCE.
- PANEL MUST BE FREE OF ALL MACHINING MARKS, GOUGES AND SCRATCHES. IF NECESSARY, SAND FRONT OF PANEL WITH NO. 120 GRIT SANDPAPER.

FINISH NOTES:

- S404 - IRIDITE 14-2 AL-COAT.
- S114 - ZINC CHROMATE PRIMER } FRONT AND
- S115 - SMOOTH GRAY ENAMEL } EDGES ONLY

MAXIMUM ALLOWABLE TOLERANCES HAVE BEEN DETERMINED AND ANY DEVIATIONS WILL BE CAUSE FOR REJECTION.

QTY REQ	ITEM	PART NO.	DESCRIPTION	SYMBOL
F-EATON BILL OF MATERIAL				
UNLESS OTHERWISE SPECIFIED DIMENSIONS ARE IN INCHES		FINAL APPROVAL	DATE	THE TECHNICAL MATERIEL CORP. MAMARONECK, NEW YORK PANEL, FRONT MODEL RTPH-3 (III)
TOLERANCES ON FRACTIONS DECIMALS ANGLES		MECH. DES.	DATE	
±1/64 ±.005 ± 1/2°		ELECT. DES.	DATE	
MATERIAL		CHECKED	DATE	
3/16THK ALUMINUM 2024-T3		DRAWN	DATE	
FINISH SEE FINISH NOTES		H. AUSTIN	12-30-66	
		APPROVED FOR BUSHIPS		CODE
		CONTRACT NO. RTPH-3		SIZE
				DWG. NO.
				ISSUE
				82679 C MS6032 X1
				SCALE 1:1 SHEET OF