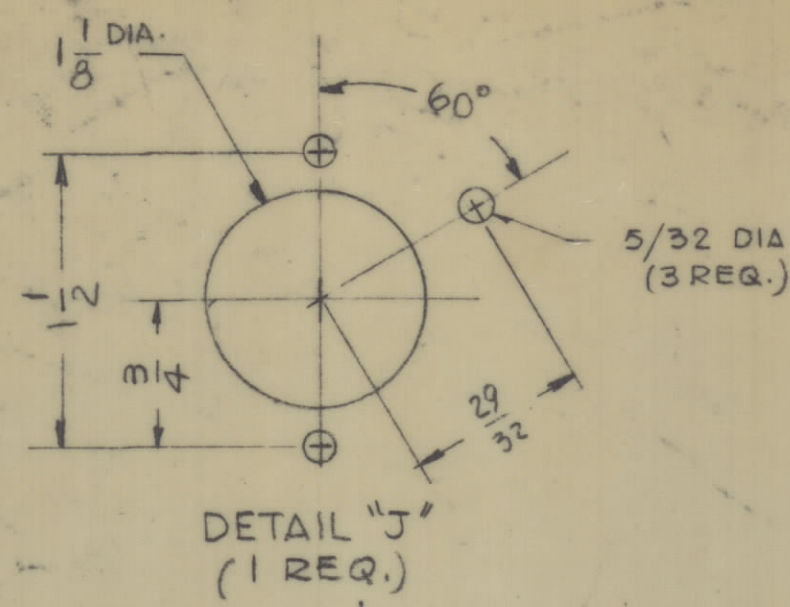
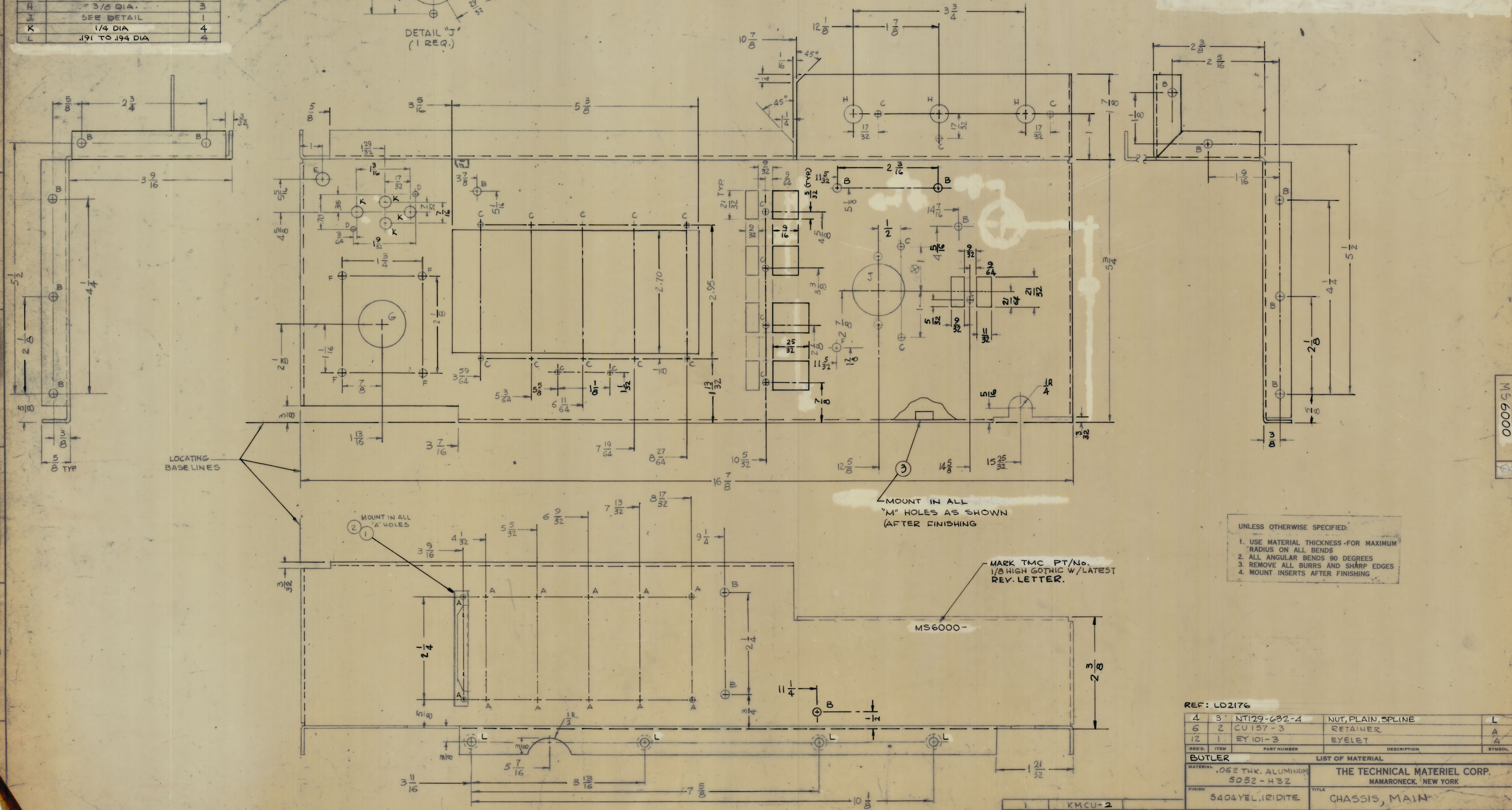


HOLE	DESCRIPTION	REQ
A	3/32 DIA.	12
B	11/64 DIA.	17
C	1/8 DIA.	22
D	7/64 DIA.	2
E	9/32 DIA.	1
F	5/32 DIA.	5
G	1" DIA.	1
H	3/8 DIA.	3
J	SEE DETAIL	1
K	1/4 DIA.	4
L	.191 TO .194 DIA.	4



ZONE		SYM		DESCRIPTION		DATE		E.M.N. NO.		DRAFT		CHKD		APPD	
A		Ø		EXPERIMENT RELEASE		10.28.44		X		LHO		SSE			
				ORIGINAL RELEASE FOR PRODUCTION		2.2.67		41		CPL					



- UNLESS OTHERWISE SPECIFIED:
1. USE MATERIAL THICKNESS FOR MAXIMUM RADIUS ON ALL BENDS
  2. ALL ANGULAR BENDS 90 DEGREES
  3. REMOVE ALL BURRS AND SHARP EDGES
  4. MOUNT INSERTS AFTER FINISHING

REF: LD2176

QTY	UNIT	MODEL USED ON	ASSY. NO.
4	3	NT129-632-4	NUT, PLAIN, SPLINE
6	2	CU157-3	RETAINER
12	1	EY101-3	EYELET

REQ'D.	ITEM	PART NUMBER	DESCRIPTION	SYMBOL

BUTLER LIST OF MATERIAL		THE TECHNICAL MATERIEL CORP.	
MATERIAL	.062 THK. ALUMINUM 5052-H32	TITLE	CHASSIS, MAIN
FINISH	S404YEL. IRIDITE		

SCALE	CODE	DATE	FINAL APPROVAL	DATE
1:1	A	10.27.66		
		10/29/66		

DECIMALS	FRACTIONS	ELECT. DES.	DATE
± .05	± 1/16"		
± .01	ANGLES		
± .005	± 0° 30'		

NOTES

MS 6000

MS6000-