

APPLICATION

QTY MODEL USED ON ASS'Y NO.

CMRA-4

LTR

Ø

REVISIONS

DESCRIPTION

ORIGINAL RELEASE

DATE

9/9/73

E.M.N.NO

DRAFT

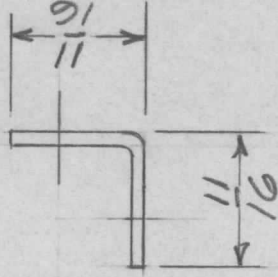
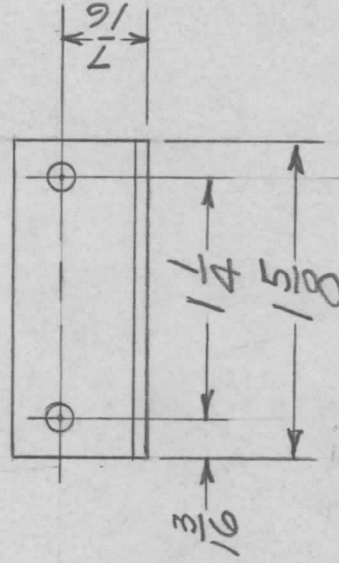
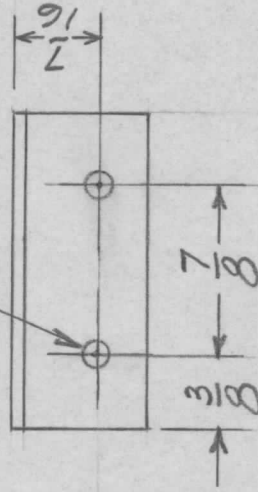
CS

CHKD

APPD

0053332-000
CMRA-4

$\frac{9}{64}$ DIA. 4 HOLES



2 REQ

UNLESS OTHERWISE SPECIFIED DIMENSIONS ARE IN INCHES AND INCLUDE CHEMICALLY APPLIED OR PLATED FINISHES

DECIMALS .X ± .05 .XX ± .01 .XXX ± .005
FRACTIONS 1/64
TOLS. 1/64
ANGLES 0° - 30'

MATERIAL .063 ALUM 5052 H 32

FINISH 5404 YEL. IRIDITE

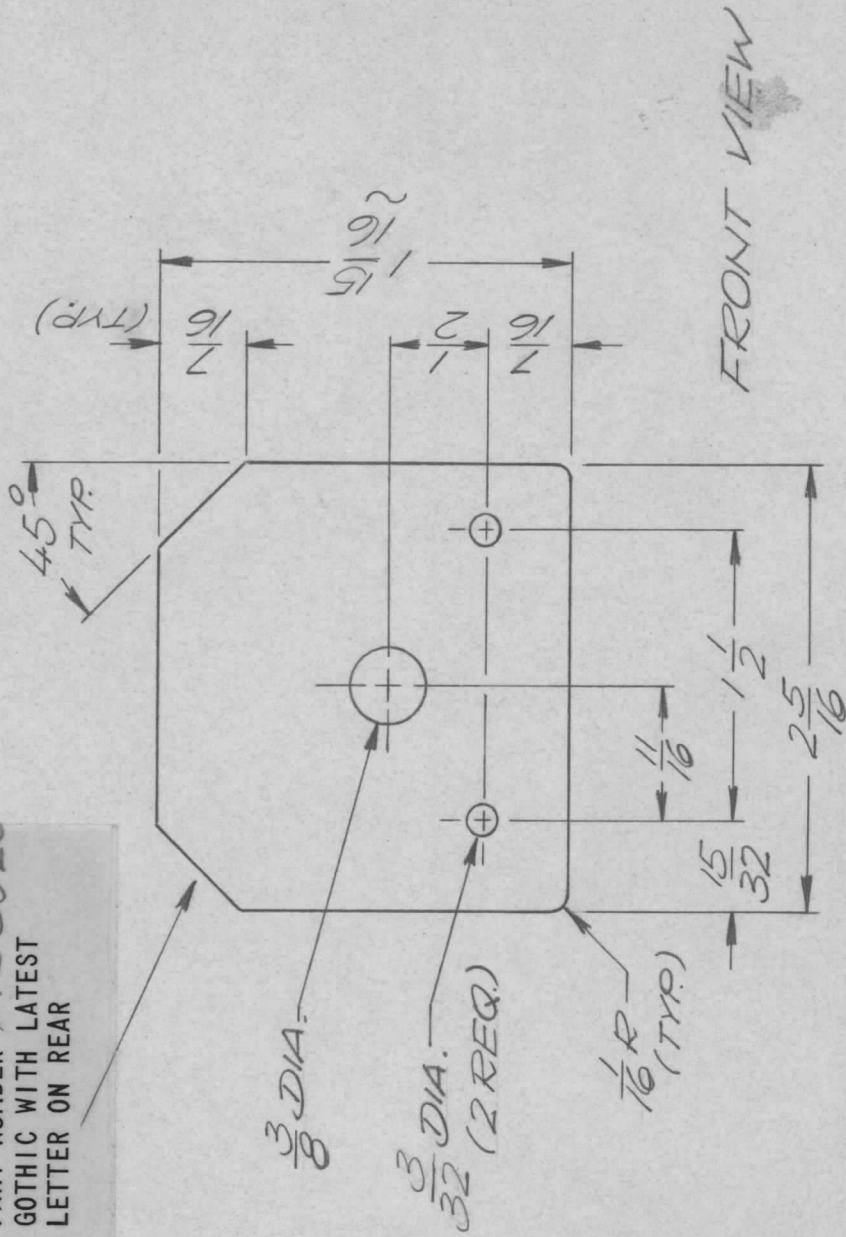
REQ'D	ITEM	PART NUMBER	DESCRIPTION	SYM.
LIST OF MATERIAL				
FINAL APPROVAL	DATE	DATE	THE TECHNICAL MATERIEL CORP. MAMARONECK, NEW YORK <i>BRACKET FOR TERM. BD.</i>	
MECH. DES.	DATE	DATE		
ELECT. DES.	DATE	DATE		
CHECKED	DATE	DATE		
DRAWN	DATE	DATE		
		D.A.G.	5-22-69	
SIZE	CODE IDENT. NO.	DWG NO.	ISSUE	
A	82679	MS5915	Ø	
SCALE		SHEET	OF	

NOTICE TO PERSONS RECEIVING THIS DRAWING
 THE TECHNICAL MATERIEL CORPORATION claims proprietary right in the material disclosed hereon. This drawing is issued in confidence for engineering information only and may not be reproduced or used to manufacture anything shown hereon without permission from THE TECHNICAL MATERIEL CORPORATION to the user. This drawing is loaned for mutual assistance and is subject to recall at any time.

REVISIONS

QTY	MODEL USED ON	ASSY NO.	LTR	DESCRIPTION	DATE	E.M.N.NO	DRAFT	CHKD	APPD
	SMEM-60 SPEC		X	EXP. RELEASE	5/9/70		SLA		
			X1	3/32 DIA HOLE WAS 9/64 DIA 1-15/16 WAS 2-1/8	5/28/70		SLA		
			Ø	ORIGINAL RELEASE	5/9/73		CS		

MARK TMC PART NUMBER MS5920
1/8 HIGH GOTHIC WITH LATEST
REVISION LETTER ON REAR



FINISH NOTES:

1. S404 - IRIDITE 14-2 AL-COAT.
 2. S114 - ZINC CHROMATE PRIMER
 3. S115 - SMOOTH GRAY ENAMEL
- OR
PRIME AND PAINT PER CUSTOMER'S SPECIFICATIONS

FRONT AND
EDGES ONLY

REF: LD 2412

REQ'D	ITEM	PART NUMBER	DESCRIPTION	SYM.
			LIST OF MATERIAL	
			THE TECHNICAL MATERIEL CORP. MAMARONECK, NEW YORK	
			PLATE, MTG., SWITCH	

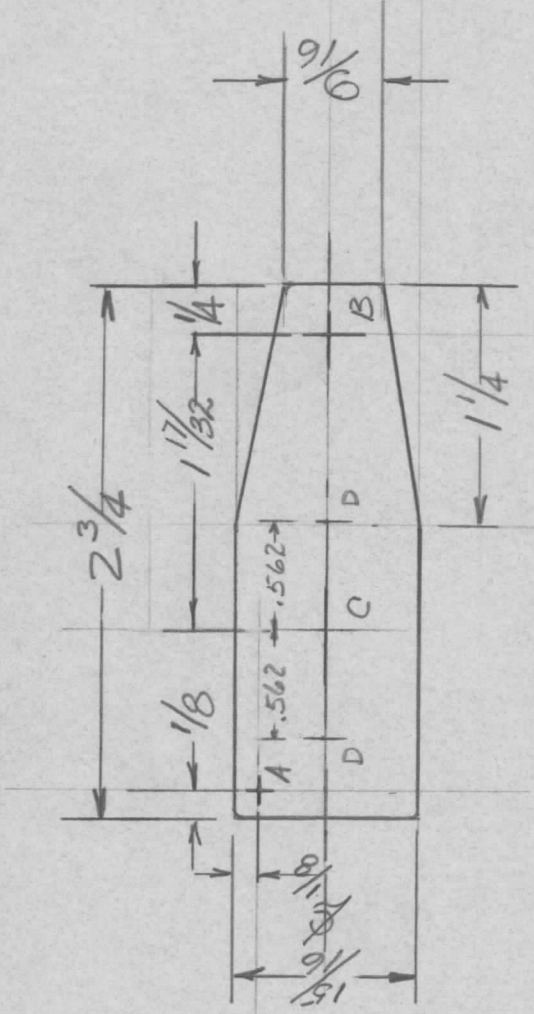
SIZE	CODE IDENT. NO.	DWG NO.	ISSUE
A	82679	MS5920	Ø
SCALE	1:1	SHEET	OF

NOTICE TO PERSONS RECEIVING THIS DRAWING
THE TECHNICAL MATERIEL CORPORATION claims proprietary right in the material disclosed hereon. This drawing is issued in confidence for engineering information only and may not be reproduced or used to manufacture anything shown hereon without permission from THE TECHNICAL MATERIEL CORPORATION to the user. This drawing is loaned for mutual assistance and is subject to recall at any time.

APPLICATION

REVISIONS

QTY	MODEL USED ON	ASS'Y NO.	LTR	DESCRIPTION	DATE	E.M.N.NO	DRAFT	CHKD	APPD
1	HFT-10K	4X508A	Ø	ORIGINAL RELEASE	5/17/73		CS		



HOLE LEGEND

- A - #32 DE (.116) 1 REER'D
- B - 13/64 (.203) 1 REER'D
- C - .6250 DIA 1 REER'D
- D - DR TAP 4-40 2 REER'D

UNLESS OTHERWISE SPECIFIED DIMENSIONS ARE IN INCHES AND INCLUDE CHEMICALLY APPLIED OR PLATED FINISHES

DECIMALS
X ± .05
.XX ± .01
.XXX ± .005

FRACTIONS
1/64
ANGLES
0° - 30'

MATERIAL 1/8 ALUM
5052-H32

FINISH 1R10ITE

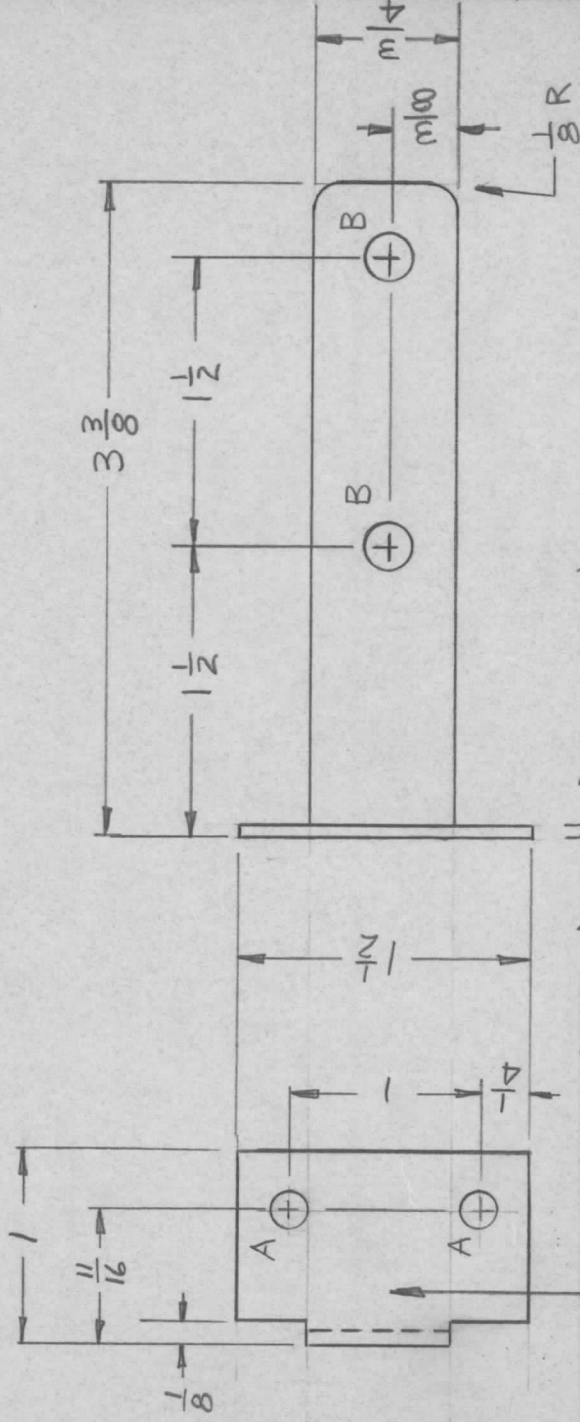
REQ'D	ITEM	PART NUMBER	DESCRIPTION	SYM.
LIST OF MATERIAL				
THE TECHNICAL MATERIEL CORP. MAMARONECK, NEW YORK				
PLATE, POT HTG				

SIZE A	CODE IDENT. NO. 82679	DWG NO. M 5927	ISSUE Ø
SCALE	SHEET	OF	

NOTICE TO PERSONS RECEIVING THIS DRAWING
THE TECHNICAL MATERIEL CORPORATION claims proprietary right in the material disclosed hereon. This drawing is issued in confidence for engineering information only and may not be reproduced or used to manufacture anything shown hereon without permission from THE TECHNICAL MATERIEL CORPORATION to the user. This drawing is loaned for mutual assistance and is subject to recall at any time.

APPLICATION REVISIONS

QTY	MODEL USED ON	ASS'Y NO.	LTR	DESCRIPTION	DATE	E.M.N.NO	DRAFT	CHKD	APPD
2	HFTA-1KJ	AP152	Ø	ORIGINAL RELEASE	5/1/71		Ø		B.E.B.



A ~ 1/64 DIA 2 REQ'D
 B ~ 15/64 DIA 2 REQ'D

MARK TMC PART NUMBER
 1/8 HIGH GOTHIC WITH LATEST
 REVISION LETTER

UNLESS OTHERWISE SPECIFIED:

1. USE MATERIAL THICKNESS FOR MAXIMUM RADIUS ON ALL BENDS.
2. ALL ANGULAR BENDS 90 DEGREES.
3. REMOVE ALL BURRS AND SHARP EDGES.
4. MOUNT INSERTS AFTER FINISHING.

REQ'D	ITEM	PART NUMBER	DESCRIPTION	SYM.
LIST OF MATERIAL				
BUDETTI				
FINAL APPROVAL	<i>[Signature]</i>	DATE	15 Jan 71	
MECH. DES.	<i>[Signature]</i>	DATE	15 Jan 71	
ELECT. DES.		DATE		
CHECKED		DATE		
DRAWN	<i>[Signature]</i>	DATE	25 Jan 71	
THE TECHNICAL MATERIEL CORP. MAMARONECK, NEW YORK				
BRKT, BLEEDER MTG				
SIZE	CODE IDENT. NO.	DWG NO.	ISSUE	
A	82679	MS 5947	Ø	
SCALE	SHEET	OF		

NOTICE TO PERSONS RECEIVING THIS DRAWING
 THE TECHNICAL MATERIEL CORPORATION claims proprietary right in the material disclosed hereon. This drawing is issued in confidence for engineering information only and may not be reproduced or used to manufacture anything shown hereon without permission from THE TECHNICAL MATERIEL CORPORATION to the user. This drawing is loaned for mutual assistance and is subject to recall at any time.

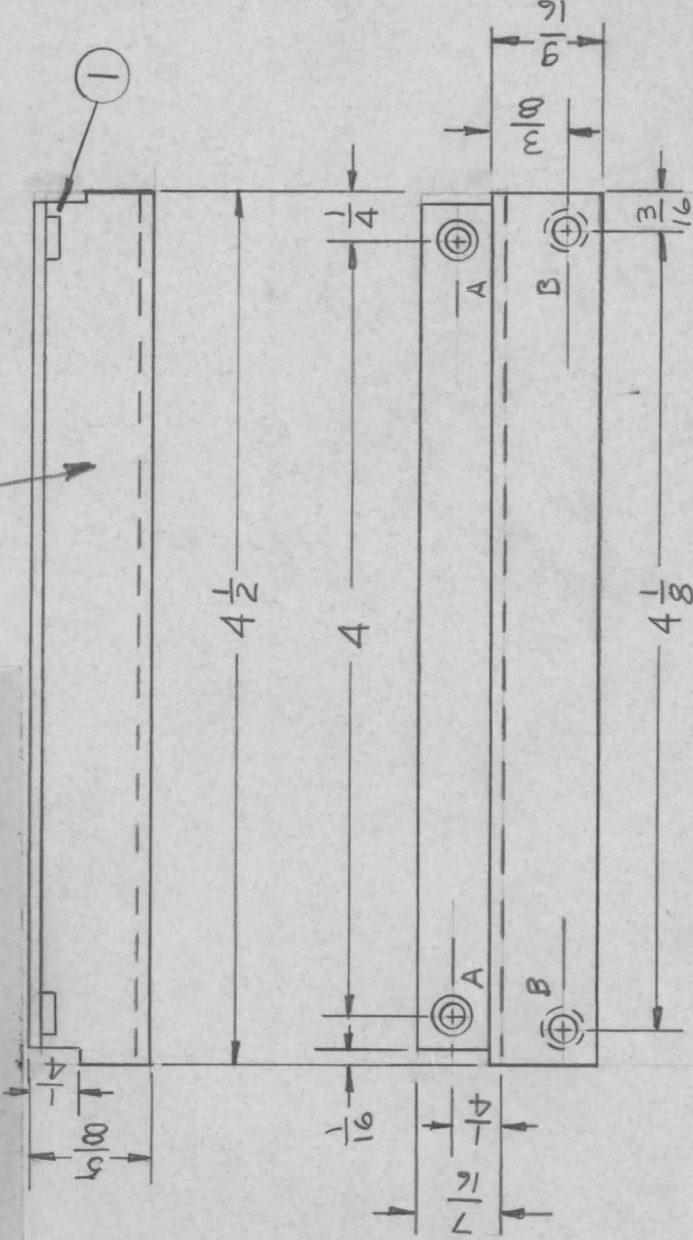
REVISIONS

QTY	MODEL USED ON	ASSY NO.	LTR	DESCRIPTION	DATE	E.M.N.NO	DRAFT	CHKD	APPD
4	HFTA-1KJ	API52	Ø	ORIGINAL RELEASE	5/19/71		W		BED

UNLESS OTHERWISE SPECIFIED:

1. USE MATERIAL THICKNESS FOR MAXIMUM RADIUS ON ALL BENDS.
2. ALL ANGULAR BENDS 90 DEGREES.
3. REMOVE ALL BURRS AND SHARP EDGES.
4. MOUNT INSERTS AFTER FINISHING.

MARK TMC PART NUMBER
1/8 HIGH GOTHIC WITH LATEST
REVISION LETTER



AW .161-.164 DIA. 2 REQ'D
 B~ DRILL .120 DIA. 2 REQ'D
 CTSK Ø2' TO .230 DIA.

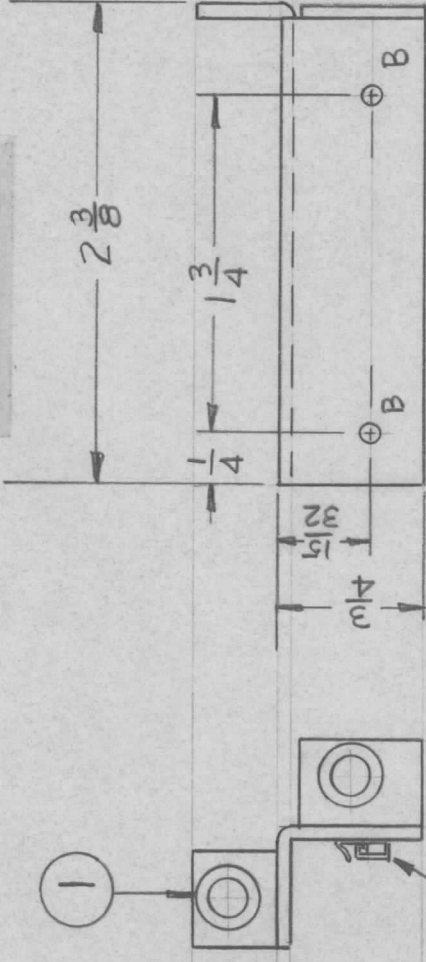
REQ'D	ITEM	PART NUMBER	DESCRIPTION	SYM.
2	1	NT129-0440-4	NUT, ROUND, SWAGE	A
LIST OF MATERIAL				
THE TECHNICAL MATERIEL CORP. MAMARONECK, NEW YORK				
BRKT, AIR FILTER				

SIZE	CODE IDENT. NO.	DWG NO.	ISSUE
A	82679	MS 5948	Ø
SCALE	SHEET	OF	

NOTICE TO PERSONS RECEIVING THIS DRAWING
 THE TECHNICAL MATERIEL CORPORATION claims proprietary right in the material disclosed hereon. This drawing is issued in confidence for engineering information only and may not be reproduced or used to manufacture anything shown hereon without permission from THE TECHNICAL MATERIEL CORPORATION to the user. This drawing is loaned for mutual assistance and is subject to recall at any time.

APPLICATION			REVISIONS						
QTY	MODEL USED ON	ASS'Y NO.	LTR	DESCRIPTION	DATE	E.M.N.NO	DRAFT	CHKD	APPD
1	HFLA-1K	AP151	Ø	ORIGINAL RELEASE	7/27/71		Ø		3.86

MARK TMC PART NUMBER
1/8 HIGH GOTHIC WITH LATEST
REVISION LETTER



A ~ .191 - .194 DIA. 2 REQ'D

B ~ 5/64 DIA. 2 REQ'D

UNLESS OTHERWISE SPECIFIED:

1. USE MATERIAL THICKNESS FOR MAXIMUM RADIUS ON ALL BENDS.
2. ALL ANGULAR BENDS 90 DEGREES.
3. REMOVE ALL BURRS AND SHARP EDGES.
4. MOUNT INSERTS AFTER FINISHING.

MS5955-1	AS SHOWN
MS5955-2	OPPOSITE HAND

2	3	EY100-5	EYELET, FLAT FLANGE	B
1	2	CU157-2	RET, PC BD	B
2	1	NT129-0632-4	NUT, PLN, SPLINE	A
REQ'D ITEM	PART NUMBER	DESCRIPTION	SYM.	

LIST OF MATERIAL

THE TECHNICAL MATERIEL CORP.
MAMARONECK, NEW YORK

BRKT, MTG, PC BD

UNLESS OTHERWISE SPECIFIED DIMENSIONS ARE IN INCHES AND INCLUDE CHEMICALLY APPLIED OR PLATED FINISHES	
DECIMALS	FRACTIONS
X ± .05	1/64
.XX ± .01	ANGLES
.XXX ± .005	0°-30°
MATERIAL .064	
ALUM 5052-H32	
FINISH	
S404 YEL IR1D	

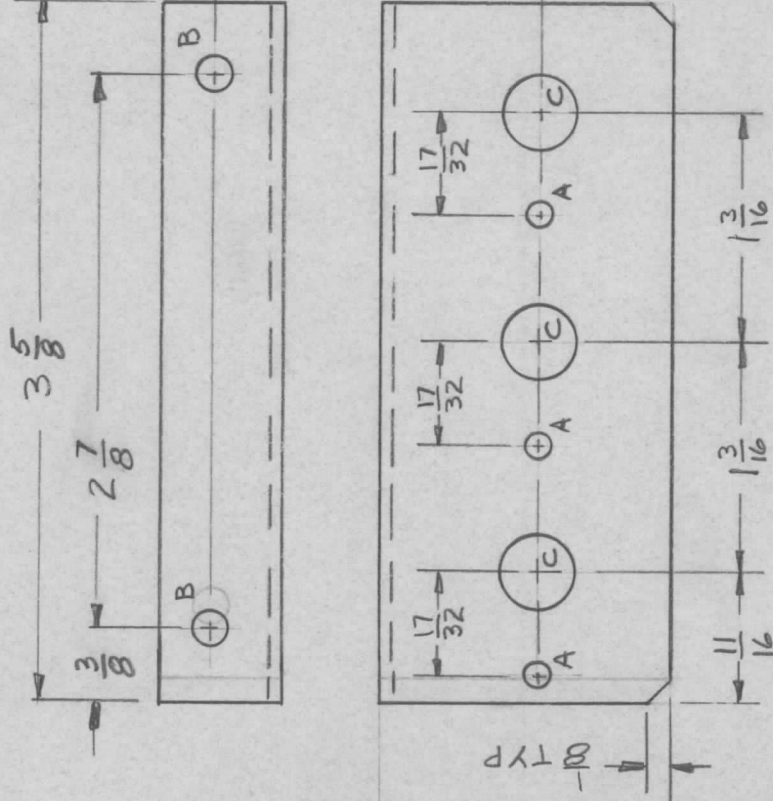
FINAL APPROVAL	DATE
<i>[Signature]</i>	157 Aug 71
MECH. DES.	DATE
<i>[Signature]</i>	157 Aug 71
ELECT. DES.	DATE
CHECKED	DATE
DRAWN	DATE
<i>[Signature]</i>	31 Aug 71

NOTICE TO PERSONS RECEIVING THIS DRAWING
THE TECHNICAL MATERIEL CORPORATION claims proprietary right in the material disclosed hereon. This drawing is issued in confidence for engineering information only and may not be reproduced or used to manufacture anything shown hereon without permission from THE TECHNICAL MATERIEL CORPORATION to the user. This drawing is loaned for mutual assistance and is subject to recall at any time.

SIZE	CODE IDENT. NO.	DWG NO.	ISSUE
A	82679	MS 5955	Ø
SCALE		SHEET	OF

APPLICATION REVISIONS

QTY	MODEL USED ON	ASSY NO.	LTR	DESCRIPTION	DATE	E.M.N.NO	DRAFT	CHKD	APPD
1	API51	A4877	Ø	ORIGINAL RELEASE	5/15/71		CO.		PEL



- A ~ 1/8 D 3 REQ'D
- B ~ 1/16 D 2 REQ'D
- C ~ 3/8 D 3 REQ'D

- UNLESS OTHERWISE SPECIFIED:
1. USE MATERIAL THICKNESS FOR MAXIMUM RADIUS ON ALL BENDS.
 2. ALL ANGULAR BENDS 90 DEGREES.
 3. REMOVE ALL BURRS AND SHARP EDGES.
 4. MOUNT INSERTS AFTER FINISHING.

REQ'D	ITEM	PART NUMBER	DESCRIPTION	SYM.
LIST OF MATERIAL				
BUDETTI				
FINAL APPROVAL	<i>JM</i>	DATE	15 Aug 71	
MECH. DES.	<i>JM</i>	DATE	15 Aug 71	
ELECT. DES.		DATE		
CHECKED		DATE		
DRAWN	<i>JM</i>	DATE	3 Nov 71	
UNLESS OTHERWISE SPECIFIED DIMENSIONS ARE IN INCHES AND INCLUDE CHEMICALLY APPLIED OR PLATED FINISHES DECIMALS FRACTIONS .X ± .05 TOLS. 1/64 .XX ± .01 ANGLES 0°-30' .XXX ± .005				
MATERIAL - 064				
ALUM 5052-H32				
FINISH				
S404 VEL IRID				
THE TECHNICAL MATERIEL CORPORATION claims proprietary right in the material disclosed hereon. This drawing is issued in confidence for engineering information only and may not be reproduced or used to manufacture anything shown hereon without permission from THE TECHNICAL MATERIEL CORPORATION to the user. This drawing is loaned for mutual assistance and is subject to recall at any time.				
SIZE	CODE IDENT. NO.	DWG NO.	ISSUE	
A	82679	MS 5956	Ø	
SCALE	SHEET	OF		

BRKT, RES MTG

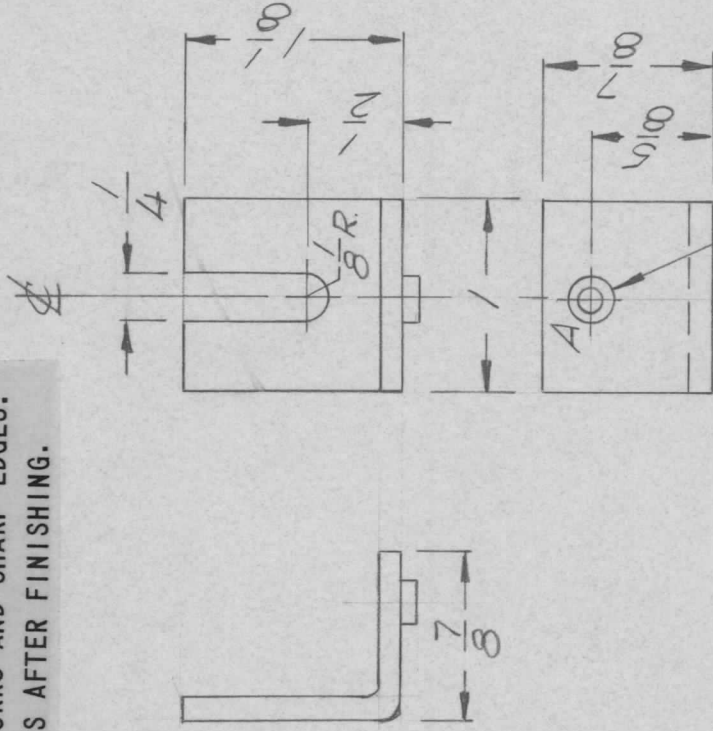
THE TECHNICAL MATERIEL CORP.
MAMARONECK, NEW YORK

APPLICATION REVISIONS

QTY	MODEL USED ON	ASSY NO.	LTR	DESCRIPTION	DATE	E.M.N.NO	DRAFT	CHKD	APPD
2	BMA 455	AX 5125	Ø	ORIGINAL RELEASE	3/15/71		W.		GEA

UNLESS OTHERWISE SPECIFIED:

1. USE MATERIAL THICKNESS FOR MAXIMUM RADIUS ON ALL BENDS.
2. ALL ANGULAR BENDS 90 DEGREES.
3. REMOVE ALL BURRS AND SHARP EDGES.
4. MOUNT INSERTS AFTER FINISHING.



① MOUNT AS SHOWN
A HOLE 1 REQ.

HOLE A - .250 ± .002 DIA. - 1 REQ.

REQ'D ITEM	PART NUMBER	DESCRIPTION	SYM.
1	NT129-1032-4	NUT PLW SWAGE	
LIST OF MATERIAL			
THE TECHNICAL MATERIEL CORP. MAMARONECK, NEW YORK			
BRKT, COV MTG			
SIZE	CODE IDENT. NO.	DWG NO.	ISSUE
A	82679	MS5957	Ø
SCALE	1:1	SHEET	OF

UNLESS OTHERWISE SPECIFIED DIMENSIONS ARE IN INCHES AND INCLUDE CHEMICALLY APPLIED OR PLATED FINISHES

DECIMALS .X ± .05
.XX ± .01
.XXX ± .005

FRACTIONS 1/64
ANGLES 0°-30'

MATERIAL .081 ALUM
5052 H32

FINISH S404
YEL. IRIDITE

FINAL APPROVAL	DATE
<i>[Signature]</i>	10/15/71
MECH. DES.	DATE
<i>[Signature]</i>	3/10/71
ELECT. DES.	DATE
CHECKED	DATE
DRAWN	DATE
GE	3/9/71

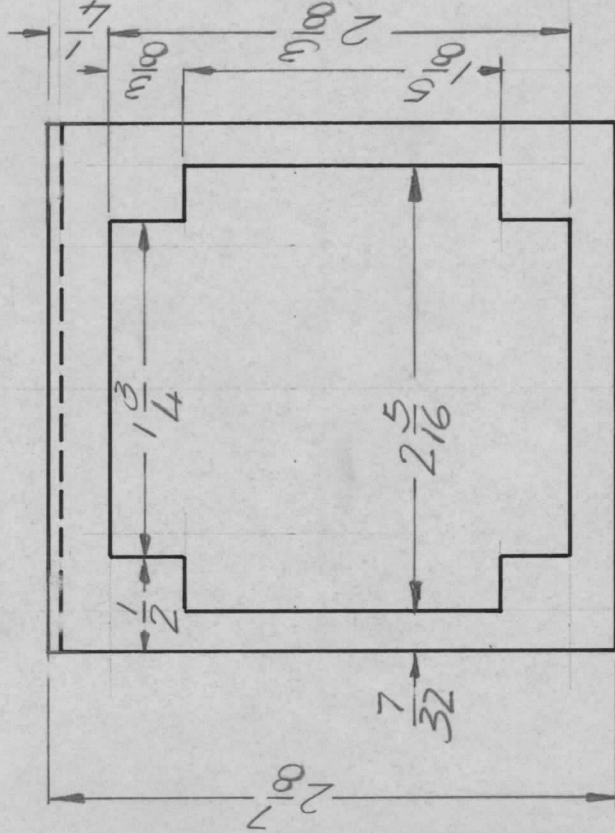
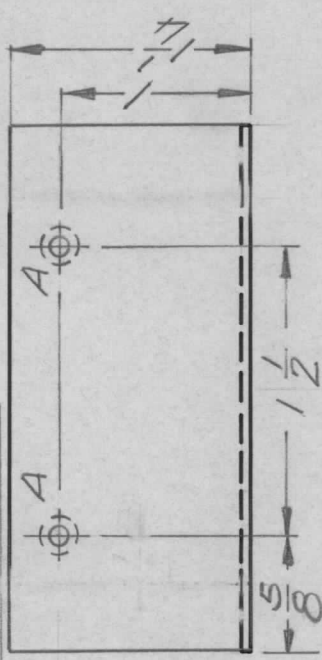
NOTICE TO PERSONS RECEIVING THIS DRAWING

THE TECHNICAL MATERIEL CORPORATION claims proprietary right in the material disclosed hereon. This drawing is issued in confidence for engineering information only and may not be reproduced or used to manufacture anything shown hereon without permission from THE TECHNICAL MATERIEL CORPORATION to the user. This drawing is loaned for mutual assistance and is subject to recall at any time.

REVISIONS

APPLICATION

QTY	MODEL USED ON	ASS'Y NO.	LTR	DESCRIPTION	DATE	E.M.N.NO	DRAFT	CHKD	APPD
1	HFT(-) - 1K	APP18	A	COMPLETELY REDRAWN	5/8/73		GE	EJ	J
1	HFTM - 1K	AP149							



A HOLE - .191 - .194 DIA - 2 REQ.

2	1	NT1290632-4	MULT ROLND	A
REQ'D ITEM	PART NUMBER	DESCRIPTION	SYM.	
F.B.	LIST OF MATERIAL			
FINAL APPROVAL	DATE	THE TECHNICAL MATERIEL CORP.		
BA	10 MAR 71	MAMARONECK, NEW YORK		
MECH. DES.	DATE	BRKT. PROTECTIVE COVER MTG.		
AC	10 MAR 71			
ELECT. DES.	DATE			
CHECKED	DATE			
DRAWN	DATE			
GE	5/7/73			

UNLESS OTHERWISE SPECIFIED DIMENSIONS ARE IN INCHES AND INCLUDE CHEMICALLY APPLIED OR PLATED FINISHES

DECIMALS FRACTIONS
 .X ± .05 1/64
 .XX ± .01 ANGLES
 .XXX ± .005 0° - 30°

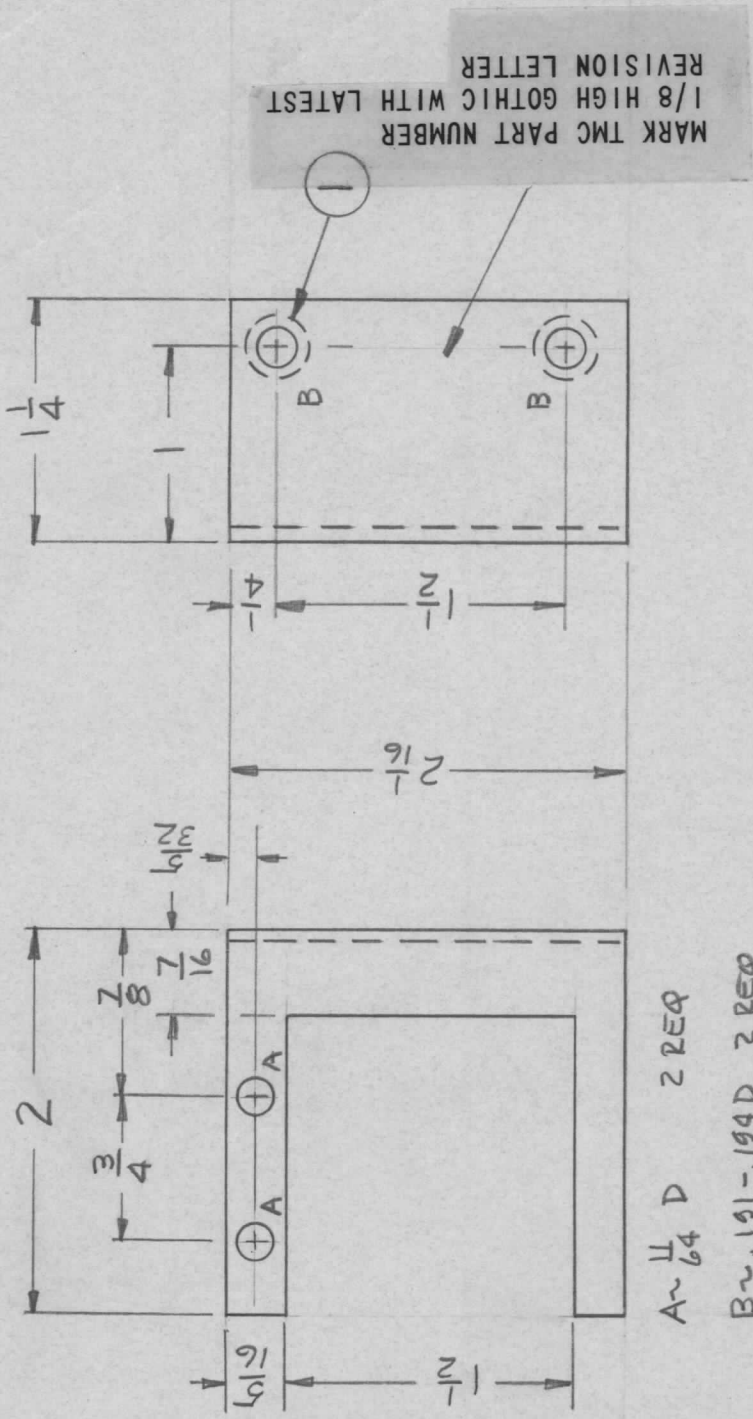
MATERIAL .051 ALUM.
 5052 H32

FINISH S404
 YEL. IRIDITE

NOTICE TO PERSONS RECEIVING THIS DRAWING
 THE TECHNICAL MATERIEL CORPORATION claims proprietary right in the material disclosed hereon. This drawing is issued in confidence for engineering information only and may not be reproduced or used to manufacture anything shown hereon without permission from THE TECHNICAL MATERIEL CORPORATION to the user. This drawing is loaned for mutual assistance and is subject to recall at any time.

SIZE	CODE IDENT. NO.	DWG NO.	ISSUE
A	82679	MS 5958	A
SCALE	1:1	SHEET	OF

APPLICATION		REVISIONS							
QTY	MODEL USED ON	ASS'Y NO.	LTR	DESCRIPTION	DATE	E.M.N.NO	DRAFT	CHKD	APPD
1	HFLA-1K	AP151	Ø	ORIGINAL RELEASE	5/27/71		aw		B3A



A ~ 1/64 D 2 REQ
B ~ .191-.194 D 2 REQ

UNLESS OTHERWISE SPECIFIED:

1. USE MATERIAL THICKNESS FOR MAXIMUM RADIUS ON ALL BENDS.
2. ALL ANGULAR BENDS 90 DEGREES.
3. REMOVE ALL BURRS AND SHARP EDGES.
4. MOUNT INSERTS AFTER FINISHING.

UNLESS OTHERWISE SPECIFIED DIMENSIONS ARE IN INCHES AND INCLUDE CHEMICALLY APPLIED OR PLATED FINISHES	REQ'D ITEM	PART NUMBER	DESCRIPTION	SYM.
DECIMALS .X ± .05 .XX ± .01 .XXX ± .005	2	1	NT129-0632-3	B
FRACTIONS 1/64	BUDETTI			
TOLS. ANGLES 0°-30'	FINAL APPROVAL	DATE	LIST OF MATERIAL	
	<i>DM</i>	15 May 71	THE TECHNICAL MATERIEL CORP.	
MATERIAL .051	MECH. DES.	DATE	MAMARONECK, NEW YORK	
ALUM 5052-H32	ELECT. DES.	DATE	BRKJT, PROT. COV. MTG.	
FINISH	CHECKED	DATE		
S404 YEL IRID	DRAWN	DATE		
		15 May 71		

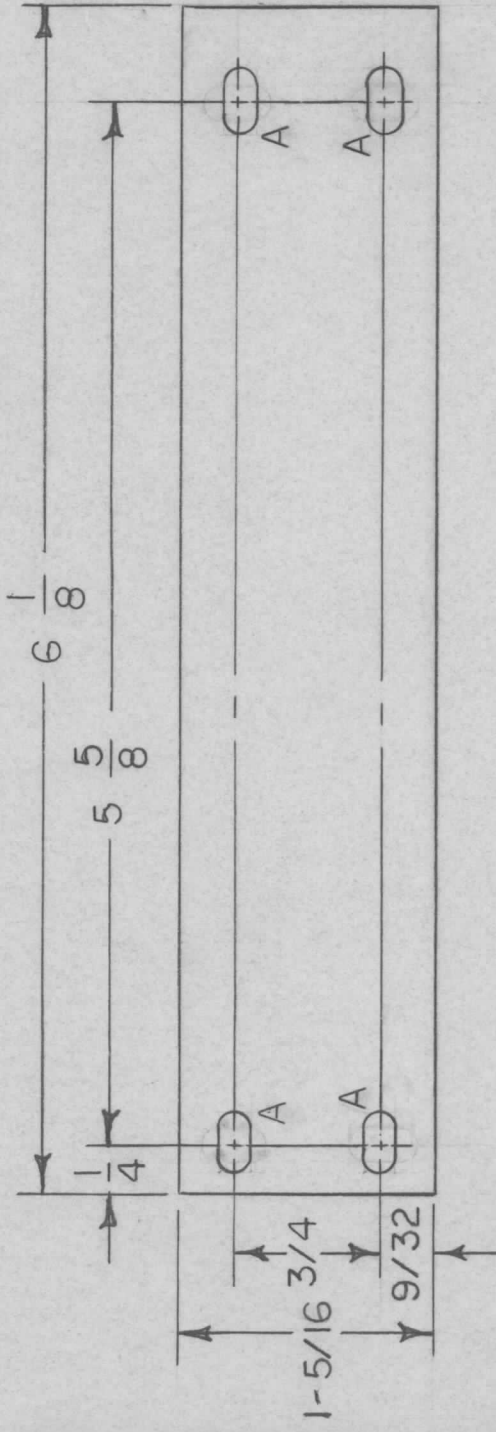
SIZE	CODE IDENT. NO.	DWG NO.	ISSUE
A	82679	MS5961	Ø
SCALE	SHEET	OF	

NOTICE TO PERSONS RECEIVING THIS DRAWING
THE TECHNICAL MATERIEL CORPORATION claims proprietary right in the material disclosed hereon. This drawing is issued in confidence for engineering information only and may not be reproduced or used to manufacture anything shown hereon without permission from THE TECHNICAL MATERIEL CORPORATION to the user. This drawing is loaned for mutual assistance and is subject to recall at any time.

REVISIONS

APPLICATION

QTY	MODEL USED ON	ASS'Y NO.	LTR	DESCRIPTION	DATE	E.M.N.NO	DRAFT	CHKD	APPD
1	TLAM-1K	AS147	X	EXP RELEASE	3-29-71		RF		
			Ø	ORIG RELEASE FOR PROD	4/21/71		CV	HC	DEA



HOLE	DESCRIPTION	REQD
A	11/64X11/32 SLOT	4

NOTES:
 1, REMOVE ALL BURRS & SHARP EDGES

UNLESS OTHERWISE SPECIFIED DIMENSIONS ARE IN INCHES AND INCLUDE CHEMICALLY APPLIED OR PLATED FINISHES	DECIMALS	± .05
	FRACTIONS	1/64
TOLS.	± .01	ANGLES
	± .005	0°-30°
MATERIAL	S245 SIL.PLATED	
FINISH	0.30 THK. HOT ROLLED COR.	
REQ'D ITEM	PART NUMBER	DESCRIPTION
F. BUDETTI		LIST OF MATERIAL
FINAL APPROVAL	DATE	
MECH. DES.	DATE	
ELECT. DES.	DATE	
CHECKED	DATE	
DRAWN	DATE	
THE TECHNICAL MATERIEL CORP. MAMARONECK, NEW YORK		
STRAP, ELEC.CONN.		

SIZE	CODE IDENT. NO.	DWG NO.	ISSUE
A	82679	MS 5962	Ø
SCALE	1/1	SHEET	OF
		1	1

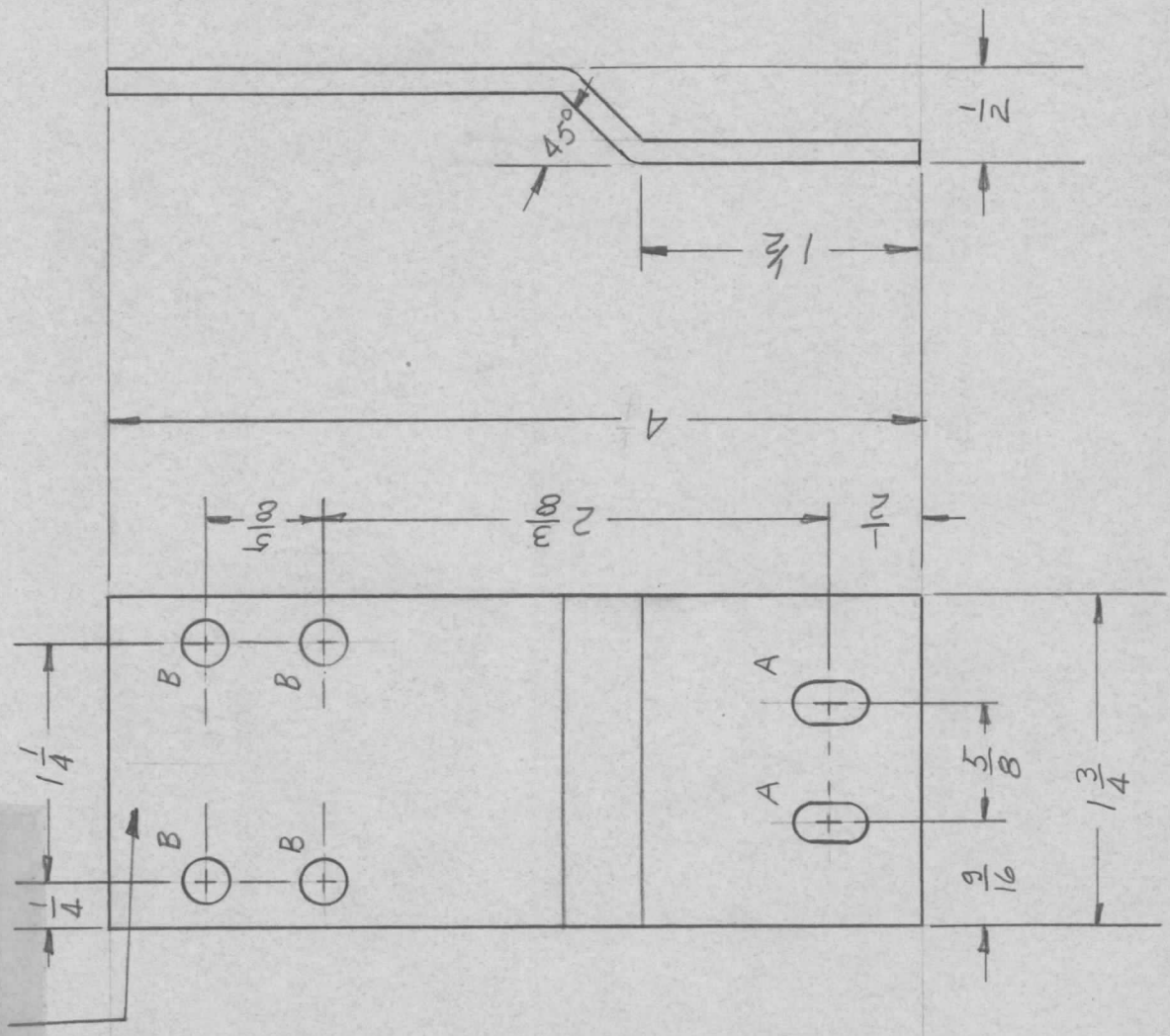
NOTICE TO PERSONS RECEIVING THIS DRAWING
 THE TECHNICAL MATERIEL CORPORATION claims proprietary right in the material disclosed hereon. This drawing is issued in confidence for engineering information only and may not be reproduced or used to manufacture anything shown hereon without permission from THE TECHNICAL MATERIEL CORPORATION to the user. This drawing is loaned for mutual assistance and is subject to recall at any time.

REVISIONS

APPLICATION

QTY	MODEL USED ON	ASS'Y NO.	LTR	DESCRIPTION	DATE	E.M.N.NO	DRAFT	CHKD	APPD
6	HFTA-1KJ	RAK 137	Ø	ORIG RELEASE FOR PROD	4/8/71		W		RED

MARK TMC PART NUMBER
1/8 HIGH GOTHIC WITH LATEST
REVISION LETTER



- UNLESS OTHERWISE SPECIFIED:
1. USE MATERIAL THICKNESS FOR MAXIMUM RADIUS ON ALL BENDS.
 2. ALL ANGULAR BENDS 90 DEGREES.
 3. REMOVE ALL BURRS AND SHARP EDGES.
 4. MOUNT INSERTS AFTER FINISHING.

A ~ $\frac{13}{64} \times \frac{13}{32}$ SLOT 2 REQ
B ~ $\frac{15}{64}$ DIA. 4 REQ

UNLESS OTHERWISE SPECIFIED DIMENSIONS ARE IN INCHES AND INCLUDE CHEMICALLY APPLIED OR PLATED FINISHES		REQ'D ITEM	PART NUMBER	DESCRIPTION	SYM.
DECIMALS		BUDETTI		LIST OF MATERIAL	
FRACTIONS		FINAL APPROVAL		THE TECHNICAL MATERIEL CORP.	
TOLS.		<i>BM</i>		MAMARONECK, NEW YORK	
ANGLES		MECH. DES.		BRKT, SLIDE MTG.	
90-30'		ELECT. DES.			
MATERIAL .125 ALUM		CHECKED			
5052-H32		DRAWN			
FINISH					
S404 YEL IRID					

NOTICE TO PERSONS RECEIVING THIS DRAWING		SIZE	CODE IDENT. NO.	DWG NO.	ISSUE
THE TECHNICAL MATERIEL CORPORATION claims proprietary right in the material disclosed hereon. This drawing is issued in confidence for engineering information only and may not be reproduced or used to manufacture anything shown hereon without permission from THE TECHNICAL MATERIEL CORPORATION to the user. This drawing is loaned for mutual assistance and is subject to recall at any time.		A	82679	MS 5963	Ø
		SCALE	SHEET	OF	

APPLICATION REVISIONS

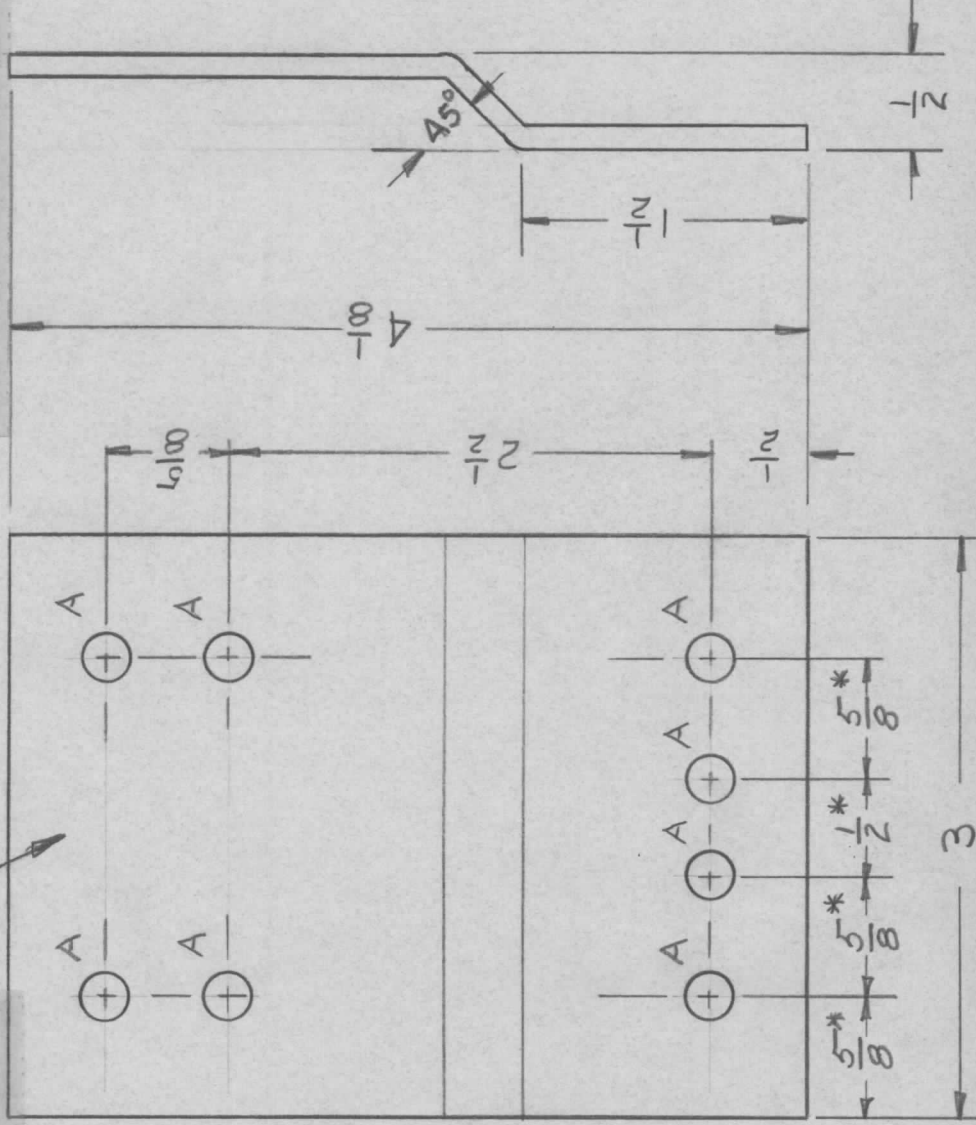
QTY	MODEL USED ON	ASS'Y NO.	LTR	DESCRIPTION	DATE	E.M.N.NO	DRAFT	CHKD	APPD
6	HFTA-1KJ	RAK137	Ø	ORIG RELEASE FOR PROD	4/10/71		W		PEB

UNLESS OTHERWISE SPECIFIED:

1. USE MATERIAL THICKNESS FOR MAXIMUM RADIUS ON ALL BENDS.
2. ALL ANGULAR BENDS 90 DEGREES.
3. REMOVE ALL BURRS AND SHARP EDGES.
4. MOUNT INSERTS AFTER FINISHING.

A ~ 15/64 DIA. Ø REQ'D.

MARK TMC PART NUMBER
1/8 HIGH GOTHIC WITH LATEST
REVISION LETTER



* TOLERANCE NON-ACCUMULATIVE

REQ'D ITEM	PART NUMBER	DESCRIPTION	SYM.
LIST OF MATERIAL			
THE TECHNICAL MATERIEL CORP. MAMARONECK, NEW YORK			
BRKT., SLIDE MTG.			
UNLESS OTHERWISE SPECIFIED DIMENSIONS ARE IN INCHES AND INCLUDE CHEMICALLY APPLIED OR PLATED FINISHES	DECIMALS	FRACTIONS	
X ± .05	1/64		
.XX ± .01	ANGLES		
.XXX ± .005	0°-30'		
MATERIAL, 125 ALUM			
5052-H32			
FINISH			
S404 YEL 121D.			
FINAL APPROVAL	DATE	DATE	DATE
<i>JMM</i>	8 APR 71	8 APR 71	7 JAN 71
MECH. DES.	DATE	DATE	DATE
<i>JMM</i>	8 APR 71		
ELECT. DES.	DATE	DATE	DATE
CHECKED	DATE	DATE	DATE
<i>JMM</i>			
DRAWN	DATE	DATE	DATE
<i>JMM</i>	7 JAN 71		
SIZE	CODE IDENT. NO.	DWG NO.	ISSUE
A	82679	MS 5964	Ø
SCALE		SHEET	OF

NOTICE TO PERSONS RECEIVING THIS DRAWING
THE TECHNICAL MATERIEL CORPORATION claims proprietary right in the material disclosed hereon. This drawing is issued in confidence for engineering information only and may not be reproduced or used to manufacture anything shown hereon without permission from THE TECHNICAL MATERIEL CORPORATION to the user. This drawing is loaned for mutual assistance and is subject to recall at any time.

REVISIONS

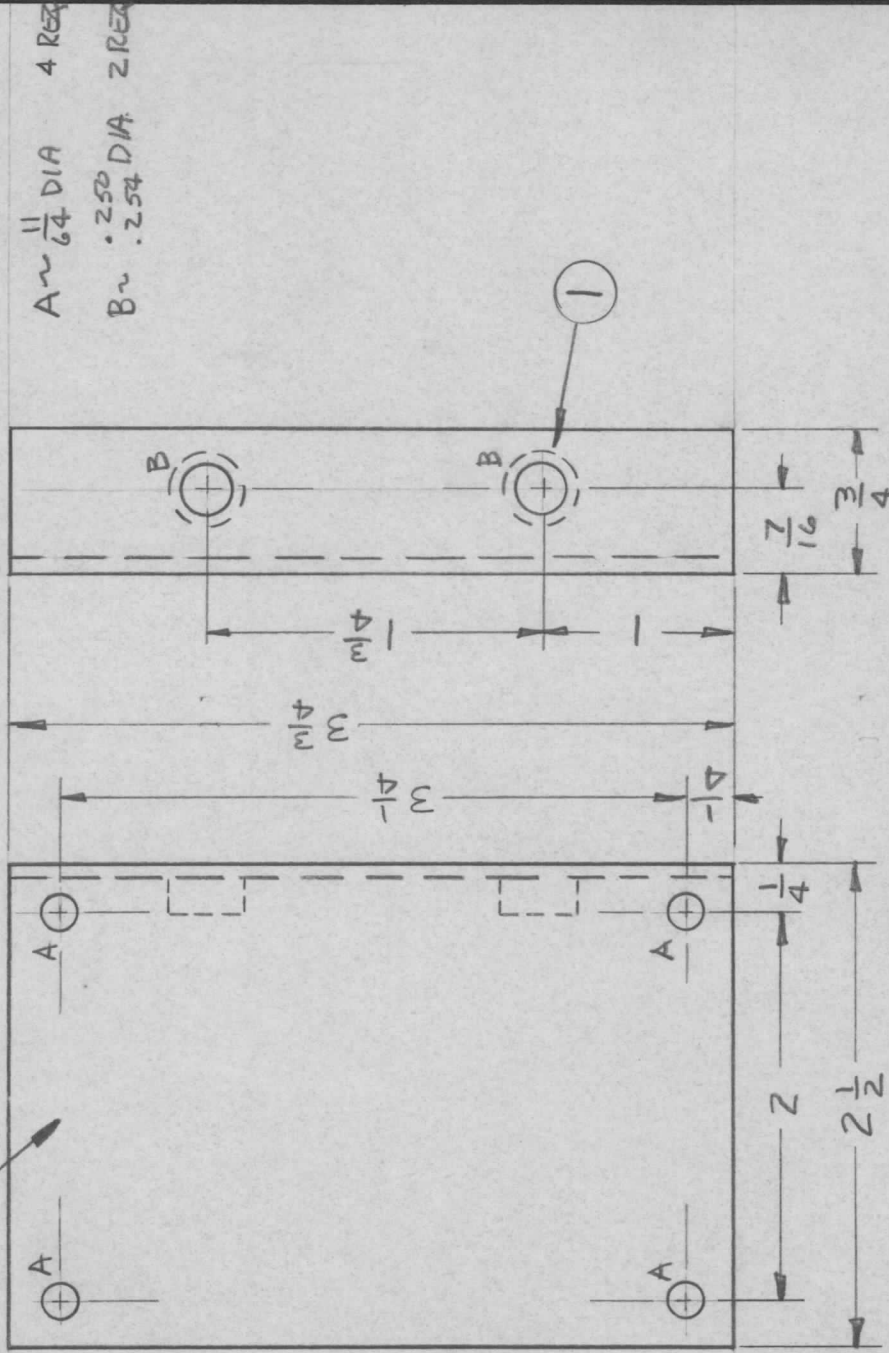
APPLICATION

QTY	MODEL USED ON	ASS'Y NO.	LTR	DESCRIPTION	DATE	E.M.N.NO	DRAFT	CHKD	APPD
6	HFTA-1KJ	RAK137	Ø	ORIG RELEASE FOR PROD	4/8/71		W		PEB

UNLESS OTHERWISE SPECIFIED:

1. USE MATERIAL THICKNESS FOR MAXIMUM RADIUS ON ALL BENDS.
2. ALL ANGULAR BENDS 90 DEGREES.
3. REMOVE ALL BURRS AND SHARP EDGES.
4. MOUNT INSERTS AFTER FINISHING.

MARK TMC PART NUMBER
1/8 HIGH GOTHIC WITH LATEST
REVISION LETTER



UNLESS OTHERWISE SPECIFIED DIMENSIONS ARE IN INCHES AND INCLUDE CHEMICALLY APPLIED OR PLATED FINISHES		REQ'D ITEM		PART NUMBER		DESCRIPTION		SYM.	
DECIMALS .X ± .05 .XX ± .01 .XXX ± .005		Z 1		NT129-1032-4		NUT, PLW, SPLINE			
FRACTIONS 1/64		BUDETTI				LIST OF MATERIAL			
TOLS. 0°-30°		FINAL APPROVAL		DATE		THE TECHNICAL MATERIEL CORP.			
MATERIAL .064		MECH. DES.		8 APR 71		MAMARONECK, NEW YORK			
ALUM, 5052-H32		ELECT. DES.		8 APR 71		BRACKET, RETRACTOR MT6			
FINISH		CHECKED		DATE					
S404 YEL 1R1D		DRAWN		7 APR 71					

NOTICE TO PERSONS RECEIVING THIS DRAWING
THE TECHNICAL MATERIEL CORPORATION claims proprietary right in the material disclosed hereon. This drawing is issued in confidence for engineering information only and may not be reproduced or used to manufacture anything shown hereon without permission from THE TECHNICAL MATERIEL CORPORATION to the user. This drawing is loaned for mutual assistance and is subject to recall at any time.

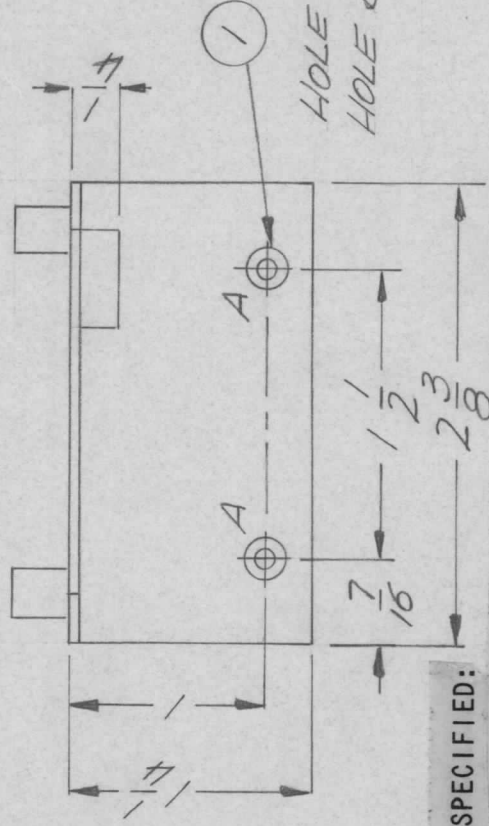
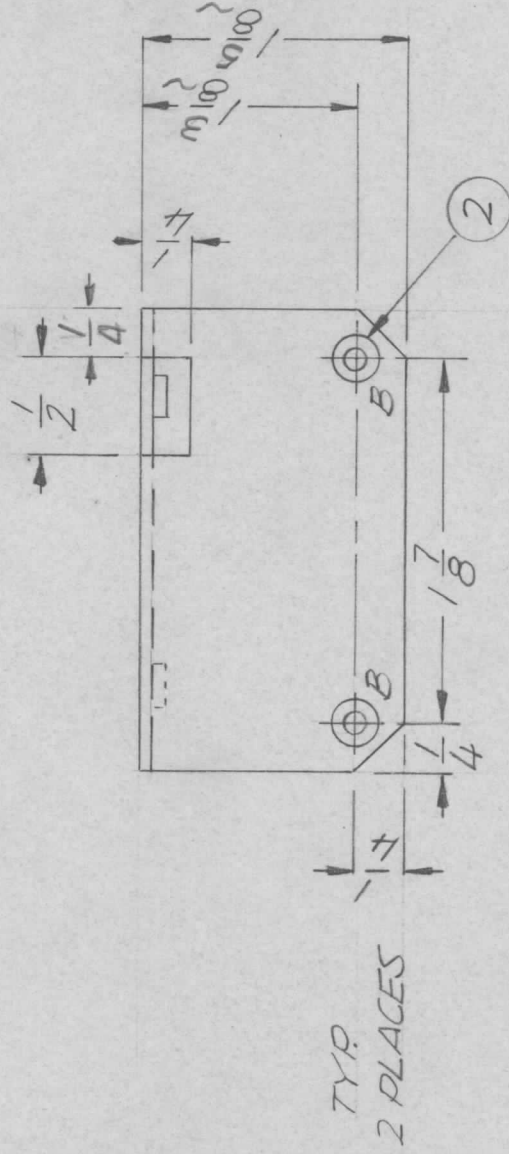
SIZE	CODE IDENT. NO.	DWG NO.	ISSUE
A	82679	MS5965	Ø
SCALE	SHEET	OF	

APPLICATION

QTY	MODEL USED ON	ASSY NO.
1	TLAA-1K	BNA46Q

REVISIONS

LTR	DESCRIPTION	DATE	E.M.N.NO	DRAFT	CHKD	APPD
Ø	ORIG RELEASE FOR PROD	6/24/71		CV		RED
A	DIMS. 1 5/8 WAS 1 3/8 & 1 3/8 WAS 1 1/8	5-24-76	21377	GBL	Ch	Cl.



UNLESS OTHERWISE SPECIFIED:

1. USE MATERIAL THICKNESS FOR MAXIMUM RADIUS ON ALL BENDS.
2. ALL ANGULAR BENDS 90 DEGREES.
3. REMOVE ALL BURRS AND SHARP EDGES.
4. MOUNT INSERTS AFTER FINISHING.

2	2	TE108-6	NUT PLN CLINCE	B
2	1	NT129-632-4	NUT PLN SPLINE	A
REQ'D ITEM	PART NUMBER	DESCRIPTION	SYM.	

LIST OF MATERIAL

FINAL APPROVAL		DATE	THE TECHNICAL MATERIEL CORP.	
MECH. DES.		DATE	MAMARONECK, NEW YORK	
ELECT. DES.		DATE	BRACKET, MTG.	
CHECKED		DATE	IPA TUNE SENSE	
DRAWN		DATE		

UNLESS OTHERWISE SPECIFIED DIMENSIONS ARE IN INCHES AND INCLUDE CHEMICALLY APPLIED OR PLATED FINISHES	
DECIMALS	FRACTIONS
.X ± .05	1/64
.XX ± .01	ANGLES
.XXX ±	0° - 30°
MATERIAL 064 ALLUM 5052 H32	
FINISH S404 VEL. IRDITE	

NOTICE TO PERSONS RECEIVING THIS DRAWING
THE TECHNICAL MATERIEL CORPORATION claims proprietary right in the material disclosed hereon. This drawing is issued in confidence for engineering information only and may not be reproduced or used to manufacture anything shown hereon without permission from THE TECHNICAL MATERIEL CORPORATION to the user. This drawing is loaned for mutual assistance and is subject to recall at any time.

SIZE	CODE IDENT. NO.	DWG NO.	ISSUE
A	82679	M55967	A
SCALE	1:1	SHEET	OF

APPLICATION

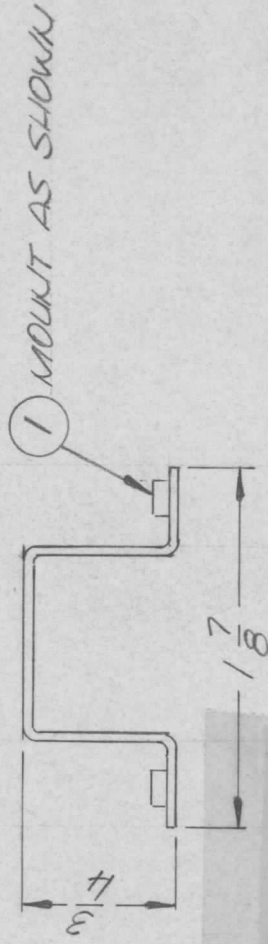
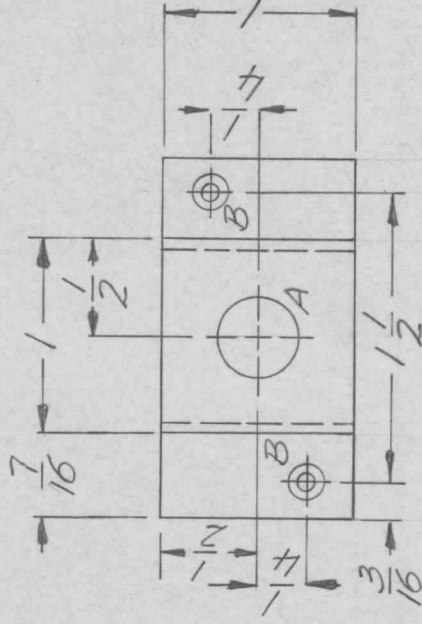
QTY 1
MODEL USED ON MMXA-2A
ASSY NO. KIT 368

LTR Ø

DESCRIPTION ORIGINAL RELEASE

REVISIONS

DATE 5/16/71
E.M.N.NO.
DRAFT
CHKD
APPD
PEL



HOLE - DESCRIPTION - REQ

A - 13/32 DIA. - 1

B - .161 - .164 DIA. - 2

UNLESS OTHERWISE SPECIFIED:

1. USE MATERIAL THICKNESS FOR MAXIMUM RADIUS ON ALL BENDS.
2. ALL ANGULAR BENDS 90 DEGREES.
3. REMOVE ALL BURRS AND SHARP EDGES.
4. MOUNT INSERTS AFTER FINISHING.

UNLESS OTHERWISE SPECIFIED DIMENSIONS ARE IN INCHES AND INCLUDE CHEMICALLY APPLIED OR PLATED FINISHES

DECIMALS
.X ± .05
.XX ± .01
.XXX ± .005

FRACTIONS
1/64
ANGLES
0° - 30'

MATERIAL .064 ALUM
5052 H 32

FINISH
5404 YEL IRIDITE

2 1 KIT290440

REQ'D ITEM

PART NUMBER

DESCRIPTION

MULTI PLN SPLINE

SYM. B

LIST OF MATERIAL

FINAL APPROVAL

DATE 15 May 71

MECH. DES.

DATE 15 May 71

ELECT. DES.

DATE

CHECKED

DATE

DRAWN

DATE 5/17/71

THE TECHNICAL MATERIEL CORP.

MAMARONECK, NEW YORK

BRACKET RESISTOR MTG.

NOTICE TO PERSONS RECEIVING THIS DRAWING

THE TECHNICAL MATERIEL CORPORATION claims proprietary right in the material disclosed hereon. This drawing is issued in confidence for engineering information only and may not be reproduced or used to manufacture anything shown hereon without permission from THE TECHNICAL MATERIEL CORPORATION to the user. This drawing is loaned for mutual assistance and is subject to recall at any time.

SIZE A

CODE IDENT. NO. 82679

DWG NO. MS 5990

ISSUE Ø

SCALE 1/8"

SHEET

OF