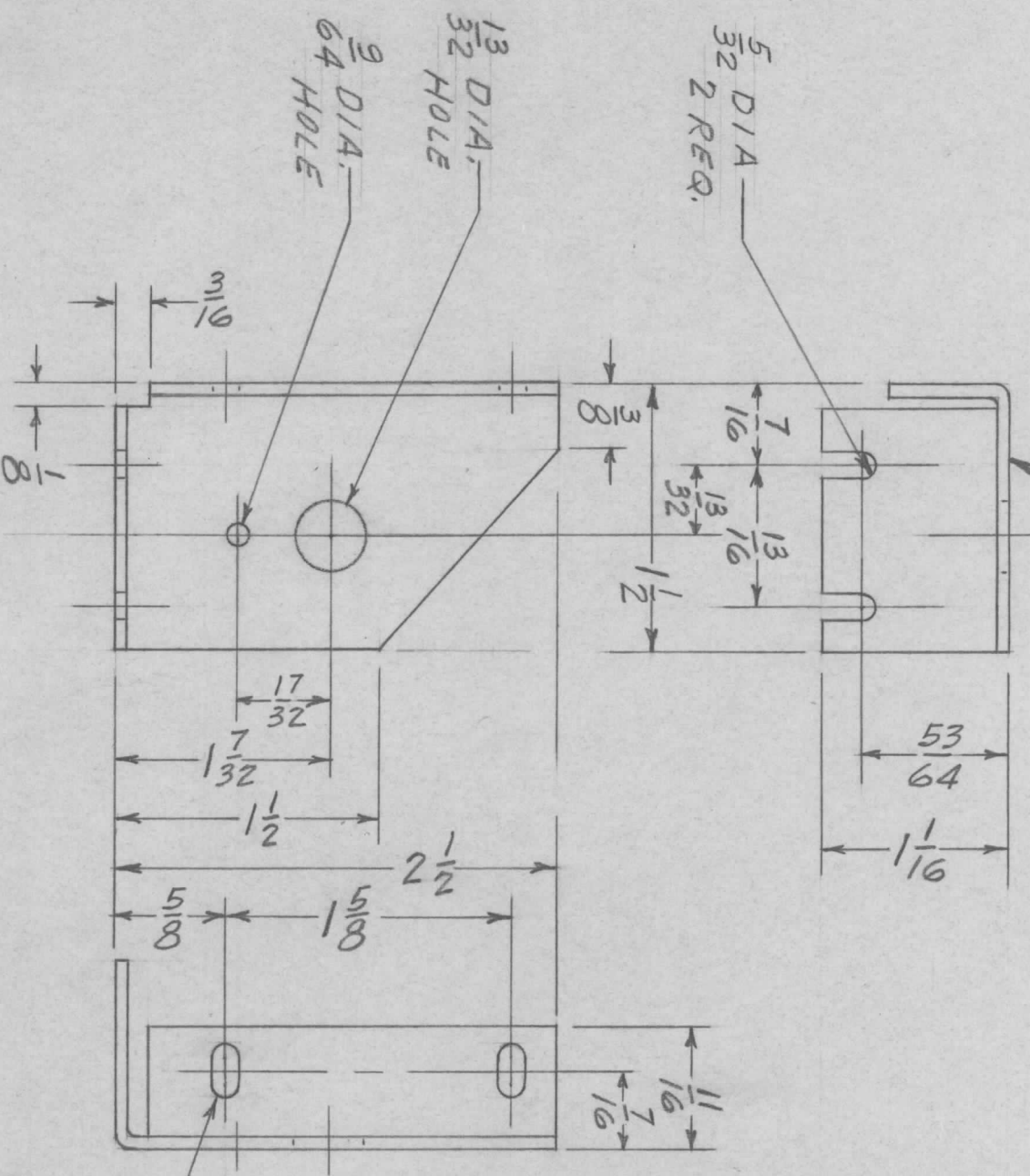


REVISIONS							
ZONE	LTR	DESCRIPTION	DATE	E.M.N.NO.	DRAFT	CHKD	APPD
0		ORIGINAL RELEASE	1-20-70		KD	[Signature]	

MARK TMC/PN 3 GOTHIC  
W/LATEST REV. LETTER



UNLESS OTHERWISE SPECIFIED:  
1. USE MATERIAL THICKNESS FOR MAXIMUM RADIUS ON ALL BENDS.  
2. ALL ANGULAR BENDS 90 DEGREES.  
3. REMOVE ALL BURRS AND SHARP EDGES.  
4. MOUNT INSERTS AFTER FINISHING.

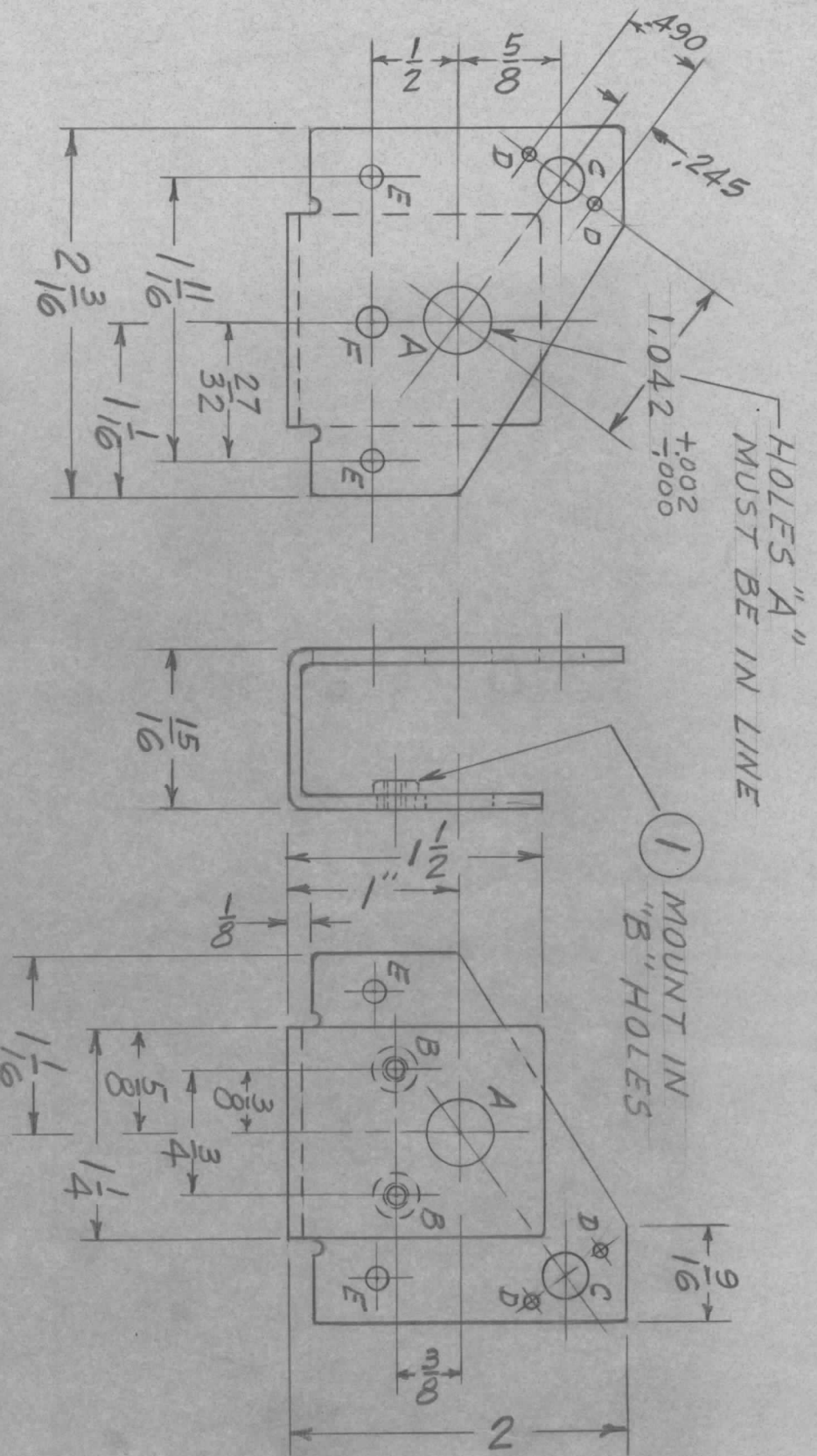
QTY / UNIT	6	MODEL USED ON	HFS-4	ASS'Y NO.	BMA 416
APPLICATION	SWITCH MOUNTING BRACKET				

UNLESS OTHERWISE SPECIFIED DIMENSIONS ARE IN INCHES AND INCLUDE CHEMICALLY APPLIED OR PLATED FINISHES	FINISH	5404 YEL. IRIDITE
DECIMALS	.XX ± .01	TOLS.
FRACTIONS	1/64	ANGLES
MATERIAL	.064 ALUMINUM	

FINAL APPROVAL	[Signature]	DATE	1-29-70
MECH. DES.	[Signature]	DATE	1-28-70
ELECT. DES.	[Signature]	DATE	1-27-70
CHECKED	[Signature]	DATE	1-30-70
DRAWN	B.A.C.	DATE	1-27-70

REQ'D ITEM	PART NUMBER	DESCRIPTION	SYM.
		THE TECHNICAL MATERIEL CORP.	
		MAMARONECK, NEW YORK	
		SIZE	B
		CODE IDENT. NO.	82679
		DWG NO.	M5 5910
		SCALE	1:1
		SHEET	OF
		ISSUE	Ø

REVISIONS							
ZONE	LTR	DESCRIPTION	DATE	E.M.N.NO	DRAFT	CHKD	APPD
Ø		ORIGINAL RELEASE	5/9/73		CS		



**HOLES**  
 A - 13/32 DIA, 2 REQ  
 B - .191-.194 DIA, 2 REQ  
 C - .1265 DIA, 1 REQ  
 D - .096 DIA, 2 REQ  
 E - 9/64 DIA, 2 REQ  
 F - 3/16 DIA, 1 REQ

REQ'D	ITEM	PART NUMBER	DESCRIPTION	SYM.
2	1	NT129-6324	NUT, PLN, SPLINE	B

LIST OF MATERIAL

THE TECHNICAL MATERIEL CORP.  
 MAMARONECK, NEW YORK

BRACKET FOR MOTOR POT.

FINAL APPROVAL	MECH. DES.	DATE	FINAL APPROVAL	MECH. DES.	DATE	SIZE	CODE IDENT. NO.	DWG NO.	ISSUE
[Signature]		10/1/73	[Signature]		10/6/69	B	82679	M55913	Ø
CHECKED			CHECKED			SCALE			
DRAWN	D.A.C.		DRAWN						

CHG(R)-4

QTY / UNIT	MODEL USED ON	ASSY NO.
	APPLICATION	
	CODE	

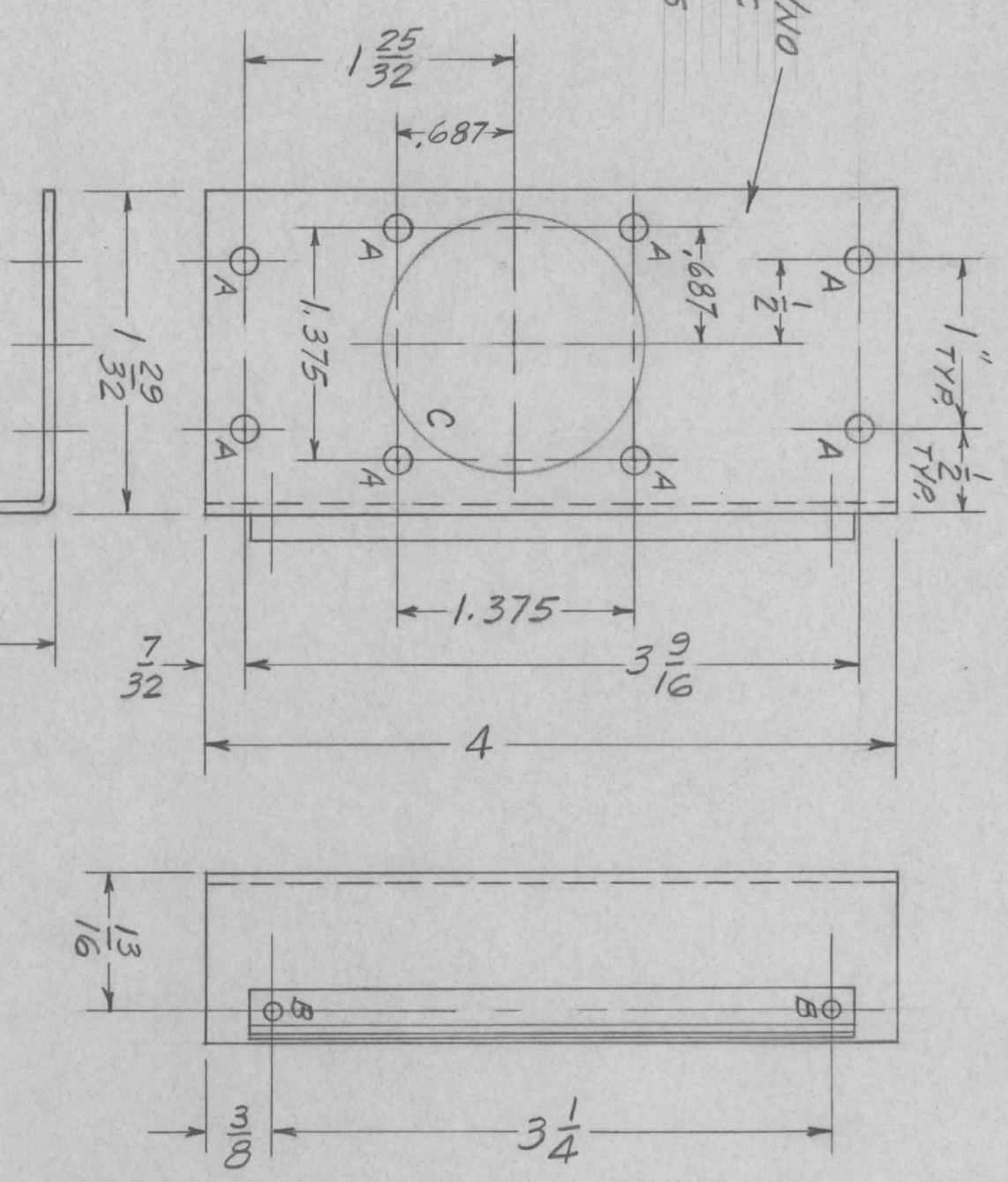
NOTICE TO PERSONS RECEIVING THIS DRAWING  
 THE TECHNICAL MATERIEL CORPORATION claims proprietary right in the material disclosed hereon. This drawing is issued in confidence for engineering information only and may not be reproduced or used to manufacture anything shown hereon without permission from THE TECHNICAL MATERIEL CORPORATION to the user. This drawing is loaned for mutual assistance and is subject to recall at any time.

UNLESS OTHERWISE SPECIFIED:

1. USE MATERIAL THICKNESS FOR MAXIMUM RADIUS ON ALL BENDS.
2. ALL ANGULAR BENDS 90 DEGREES.
3. REMOVE ALL BURRS AND SHARP EDGES.
4. MOUNT INSERTS AFTER FINISHING.

REVISIONS						
ZONE	LTR	DESCRIPTION	DATE	E.M.N.NO	DRAFT	CHKD
	Ø	ORIG RELEASE FOR PROD	6/9/70		CV	

MARK TMC P/NO  
1/8 HIGH GOTHIC  
WITH LATEST  
REV. LETTERS



HOLE	DESCRIPTION	REQ
A	1/64 DIA.	8
B	.067 DIA.	2
C	1 1/32 DIA	1

1 MOUNT IN  
2 "B" HOLES

REQ'D ITEM	PART NUMBER	DESCRIPTION	SYM.	
1	2	CU 157-4	RETAINER PC BOARD	B
2	1	EY 100-5	EYELET, FLAT FLANGE	B

QTY / UNIT	1	MODEL USED ON	KIT 363	ASS'Y NO.	
APPLICATION					
CODE					

DECIMALS	.X ± .05	FRACTIONS	1/64
	.XX ± .01	TOLS.	ANGLES
	.XXX ± .005		0° - 30'

FINISH	5052 H 32
FINISH	S 404
FINISH	YEL. IRIDITE

UNLESS OTHERWISE SPECIFIED DIMENSIONS ARE IN INCHES AND INCLUDE CHEMICALLY APPLIED OR PLATED FINISHES
---

FINAL APPROVAL	DATE
MECH. DES.	DATE
ELECT. DES.	DATE
CHECKED	DATE
DRAWN	DATE

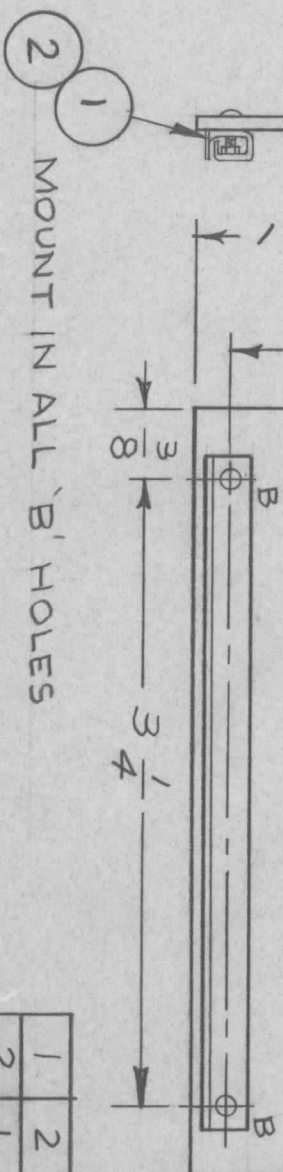
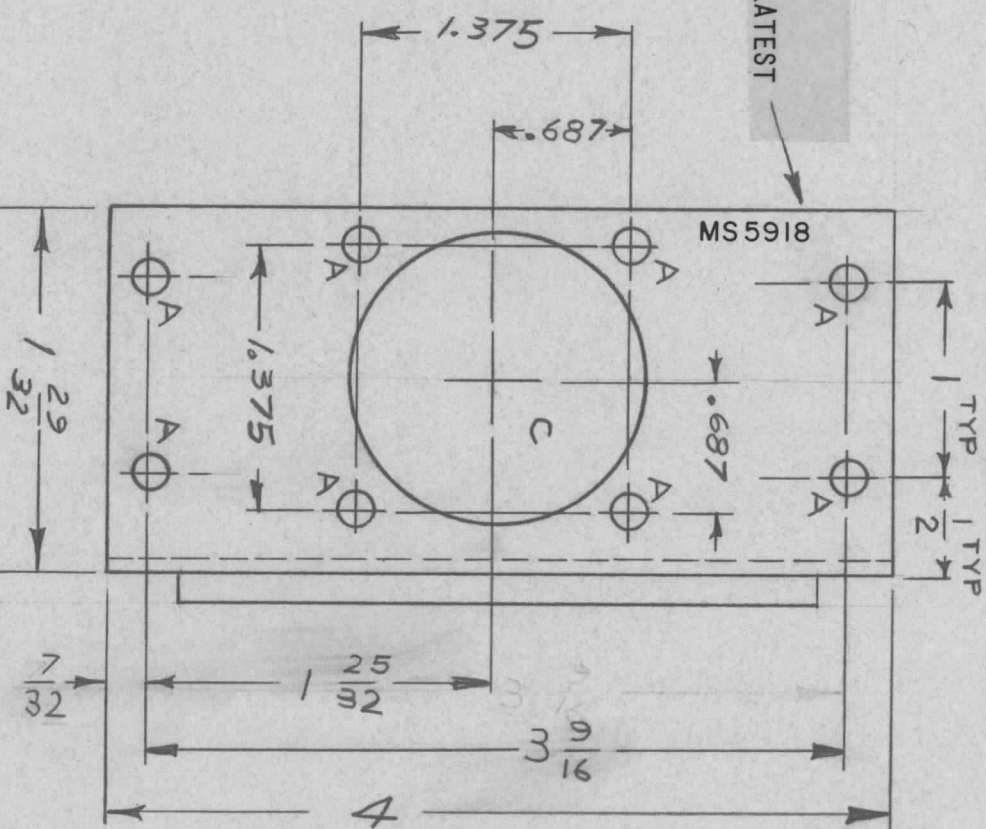
THE TECHNICAL MATERIEL CORP.
MAMARONECK, NEW YORK
BRACKET, MTG. CONNECTOR

- UNLESS OTHERWISE SPECIFIED:
- USE MATERIAL THICKNESS FOR MAXIMUM RADIUS ON ALL BENDS.
  - ALL ANGULAR BENDS 90 DEGREES.
  - REMOVE ALL BURRS AND SHARP EDGES.
  - MOUNT IT. 1 & 2 AFTER FINISHING.

NOTICE TO PERSONS RECEIVING THIS DRAWING  
THE TECHNICAL MATERIEL CORPORATION claims proprietary right in the material disclosed hereon. This drawing is issued in confidence for engineering information only and may not be reproduced or used to manufacture anything shown hereon without permission from THE TECHNICAL MATERIEL CORPORATION to the user. This drawing is loaned for mutual assistance and is subject to recall at any time.

SIZE	B	CODE IDENT. NO.	82679	DWG NO.	MS 5914	ISSUE	Ø
SCALE	1:1			SHEET		OF	

MARK TMC PART NUMBER  
1/8 HIGH GOTHIC WITH LATEST  
REVISION LETTER



MOUNT IN ALL 'B' HOLES

- UNLESS OTHERWISE SPECIFIED:
1. USE MATERIAL THICKNESS FOR MAXIMUM RADIUS ON ALL BENDS.
  2. ALL ANGULAR BENDS 90 DEGREES.
  3. REMOVE ALL BURRS AND SHARP EDGES.
  4. MOUNT INSERTS AFTER FINISHING.

REVISIONS							
ZONE	LTR	DESCRIPTION	DATE	E.M.N.NO	DRAFT	CHKD	APPD
	X	EXPERIMENTAL RELEASE	3-12-70		KD		
	Ø	ORIG RELEASE FOR P ROD	5/22/70		CV		

HOLE LEGEND  
 A ~ 1/64 DIA ( 8 REQ'D )  
 B ~ .067 DIA ( 2 REQ'D )  
 C ~ 1 1/32 DIA ( 1 REQ'D )

REQ'D ITEM	PART NUMBER	DESCRIPTION	SYM.
1	CU157-4	RETAINER, PC BOARD	B
2	EY100-5	EYELET, FLAT FLANGE	B

LIST OF MATERIAL

THE TECHNICAL MATERIEL CORP.  
MAMARONECK, NEW YORK

BRACKET, MTG. RETAINER

1	MM XA-2		
1	CHGR-4		
QTY / UNIT		MODEL USED ON	ASS'Y NO.
		APPLICATION	
		CODE	

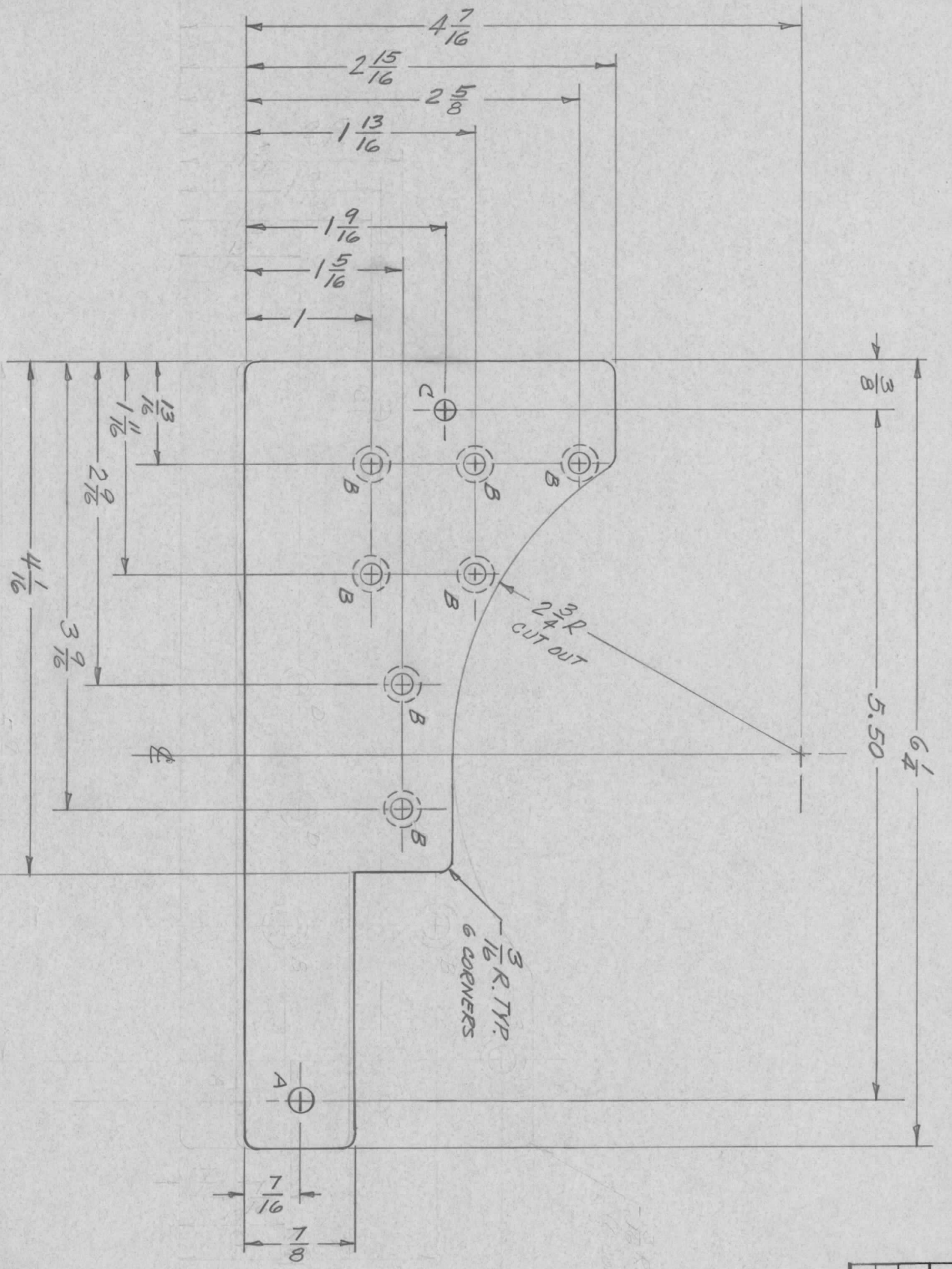
UNLESS OTHERWISE SPECIFIED DIMENSIONS ARE IN INCHES AND INCLUDE CHEMICALLY APPLIED OR PLATED FINISHES	
DECIMALS X ± .05 .XX ± .01 .XXX ± .005	FRACTIONS 1/64 ANGLES ° .30'
MATERIAL 5052-H32	FINISH S404 YEL IRIDITE

FINAL APPROVAL	DATE
MECH. DES.	DATE
ELECT. DES.	DATE
CHECKED	DATE
DRAWN	DATE

SIZE	CODE IDENT. NO.	DWG NO.	ISSUE
B	82679	MS 5918	Ø
SCALE 1:1			

NOTICE TO PERSONS RECEIVING THIS DRAWING  
 THE TECHNICAL MATERIEL CORPORATION claims proprietary right in the material disclosed hereon. This drawing is issued in confidence for engineering information only and may not be reproduced or used to manufacture anything shown hereon without permission from THE TECHNICAL MATERIEL CORPORATION to the user. This drawing is loaned for mutual assistance and is subject to recall at any time.

REVISIONS							
ZONE	LTR	DESCRIPTION	DATE	E.M.N. NO	DRAFT	CHKD	APPD
	X1	REDESIGNED	11/11/69		V.A.		R
	Ø	ORIGINAL RELEASE	5/4/73		CS		



HOLE	DESCRIPTION	REQ'D
A	7/32 DIA.	1
B	5/32 DIA. 82° C'SINK TO 9/32 DIA.	7
C	5/32 DIA.	1

NOTE:  
REMOVE ALL BURRS & SHARP EDGES

REQ'D ITEM	PART NUMBER	DESCRIPTION	SYM.
		LIST OF MATERIAL	

FINAL APPROVAL		
MECH. DES.	J. ANGER	DATE 9/16/69
ELECT. DES.		DATE
CHECKED		DATE
DRAWN	V. ANGER	DATE 9/16/69

THE TECHNICAL MATERIEL CORP.  
MAMARONECK, NEW YORK

PLATES, CAPACITOR MTR.

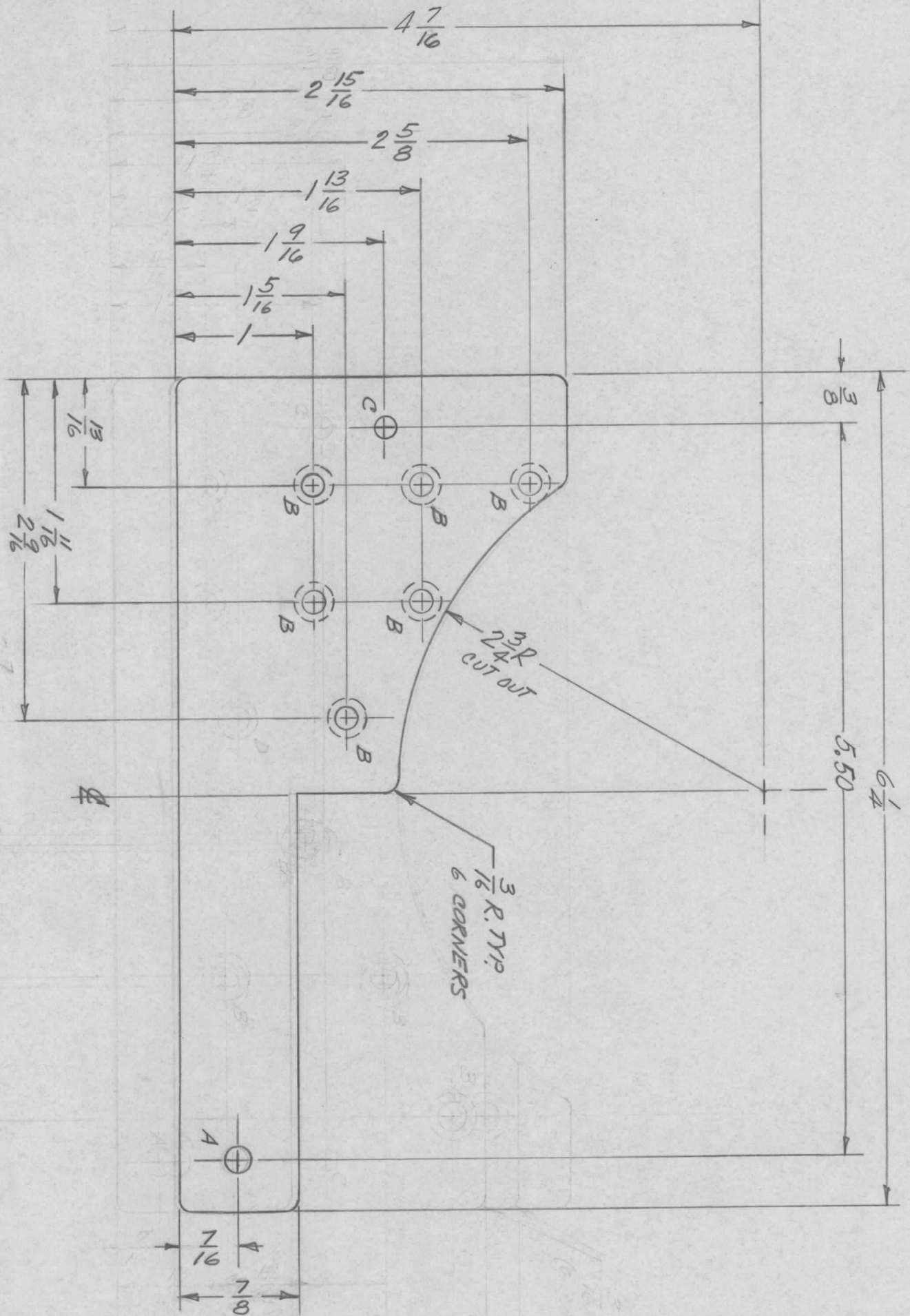
QTY / UNIT	1	GPTR 10K ( )	AF 109
MODEL USED ON	APPLICATION		
ASS'Y NO.	CODE		

UNLESS OTHERWISE SPECIFIED DIMENSIONS ARE IN INCHES AND INCLUDE CHEMICALLY APPLIED OR PLATED FINISHES			
DECIMALS	X ± .05	FRACTIONS	1/64
.XX ± .01	TOLS.	ANGLES	0° .30'
.XXX ± .005			
MATERIAL	Ø91 THK. ALUMINUM		
FINISH	S 404		
	YELLOW IRIDITE		

SIZE	CODE IDENT. NO.	DWG. NO.	ISSUE
B	82679	MS 5923	Ø
SCALE	1:1	SHEET	1 OF 1

NOTICE TO PERSONS RECEIVING THIS DRAWING  
THE TECHNICAL MATERIEL CORPORATION claims proprietary right in the material disclosed hereon. This drawing is issued in confidence for engineering information only and may not be reproduced or used to manufacture anything shown hereon without permission from THE TECHNICAL MATERIEL CORPORATION to the user. This drawing is loaned for mutual assistance and is subject to recall at any time.

REVISIONS						
ZONE	LTR	DESCRIPTION	DATE	E.M.N.NO	DRAFT	CHKD
	X1	REDESIGNED	11/11/69		J.A	
	<del>0</del>	ORIGINAL RELEASE	5/4/53		CS	



HOLE	DESCRIPTION	REQ'D
A	7/32 DIA.	1
B	5/32 DIA. 82° C'SINK TO 9/32 DIA.	6
C	5/32 DIA.	1
D	1/8 DIA. 82° C'SINK TO 9/32 DIA.	7

NOTE:  
REMOVE ALL BURRS & SHARP EDGES

REQ'D	ITEM	PART NUMBER	DESCRIPTION	SYM.
			LIST OF MATERIAL	

THE TECHNICAL MATERIEL CORP.  
MAMARONECK, NEW YORK

PLATE, CAPACITOR MTR.

QTY / UNIT	1	6PTR 10K ( )	AF 109
MODEL USED ON	APPLICATION		
ASSY NO.	CODE		

NOTICE TO PERSONS RECEIVING THIS DRAWING  
THE TECHNICAL MATERIEL CORPORATION claims proprietary right in the material disclosed herein. This drawing is issued in confidence for engineering information only and may not be reproduced or used to manufacture anything shown herein without permission from THE TECHNICAL MATERIEL CORPORATION to the user. This drawing is loaned for mutual assistance and is subject to recall at any time.

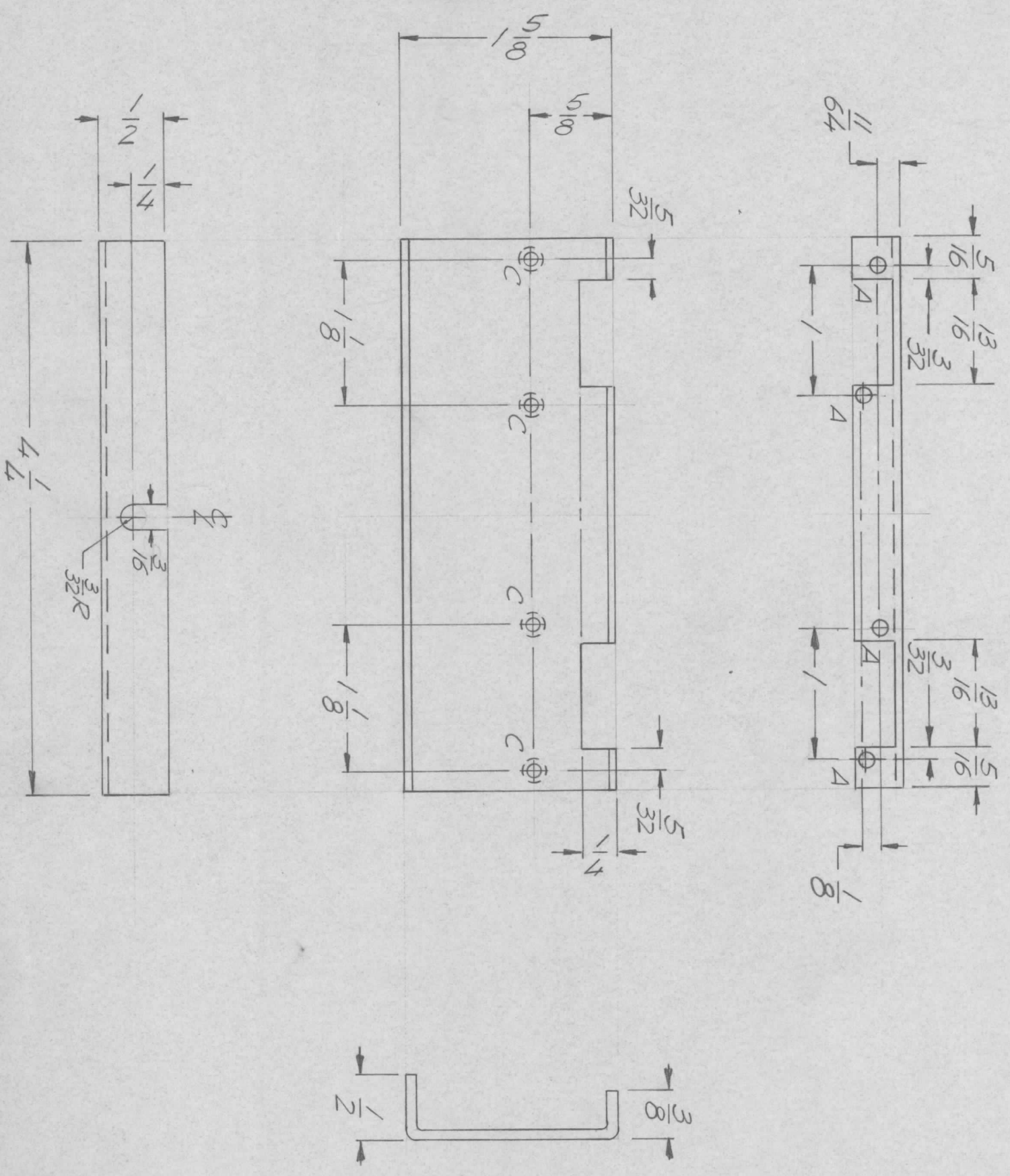
DECIMALS	X ± .05	TOLS.	FRACTIONS	1/64
	.XX ± .01		ANGLES	0° .30'
	.XXX ± .005			
MATERIAL	5052-H32			
	.081 THK. ALUMINUM			
FINISH	S404			
	YELLOW IRIDIOTE			

FINAL APPROVA		DATE	9/15/69
MECH. DES.	J. Anger	DATE	9/15/69
ELECT. DES.		DATE	
CHECKED		DATE	
DRAWN	J. Anger	DATE	9/15/69

SIZE	CODE IDENT. NO.	DWG NO.	ISSUE
B	82679	MS 5924	
SCALE	1:1	SHEET 1 OF 1	

REVISIONS							
ZONE	LTR	DESCRIPTION	DATE	E.M.N. NO	DRAFT	CHKD	APPD
	Ø	ORIG RELEASE FOR PROD	11/9/70		CV		

HOLE DESCRIPTION QTY  
 A 3/32 DIA. 4  
 B DELETED  
 C C'SNK FOR 0256 4  
 FLAT HEAD SCW.



UNLESS OTHERWISE SPECIFIED:

1. USE MATERIAL THICKNESS FOR MAXIMUM RADIUS ON ALL BENDS.
2. ALL ANGULAR BENDS 90 DEGREES.
3. REMOVE ALL BURRS AND SHARP EDGES.
4. MOUNT INSERTS AFTER FINISHING.

QTY / UNIT	1	MODEL USED ON	H FRR-4	ASS'Y NO.	B4A 291
APPLICATION		CODE			

NOTICE TO PERSONS RECEIVING THIS DRAWING  
 THE TECHNICAL MATERIEL CORPORATION claims proprietary right in the material disclosed hereon. This drawing is issued in confidence for engineering information only and may not be reproduced or used to manufacture anything shown hereon without permission from THE TECHNICAL MATERIEL CORPORATION to the user. This drawing is loaned for mutual assistance and is subject to recall at any time.

DECIMALS	FRACTIONS
X ± .05	1/64
.XX ± .01	ANGLES
.XXX ± .005	0° .30'
MATERIAL .051 ALUM	
5052 H 32	
FINISH S 40 L	
VEL. IRIDITE	

REQ'D ITEM	PART NUMBER	DESCRIPTION	SYM.
LIST OF MATERIAL			

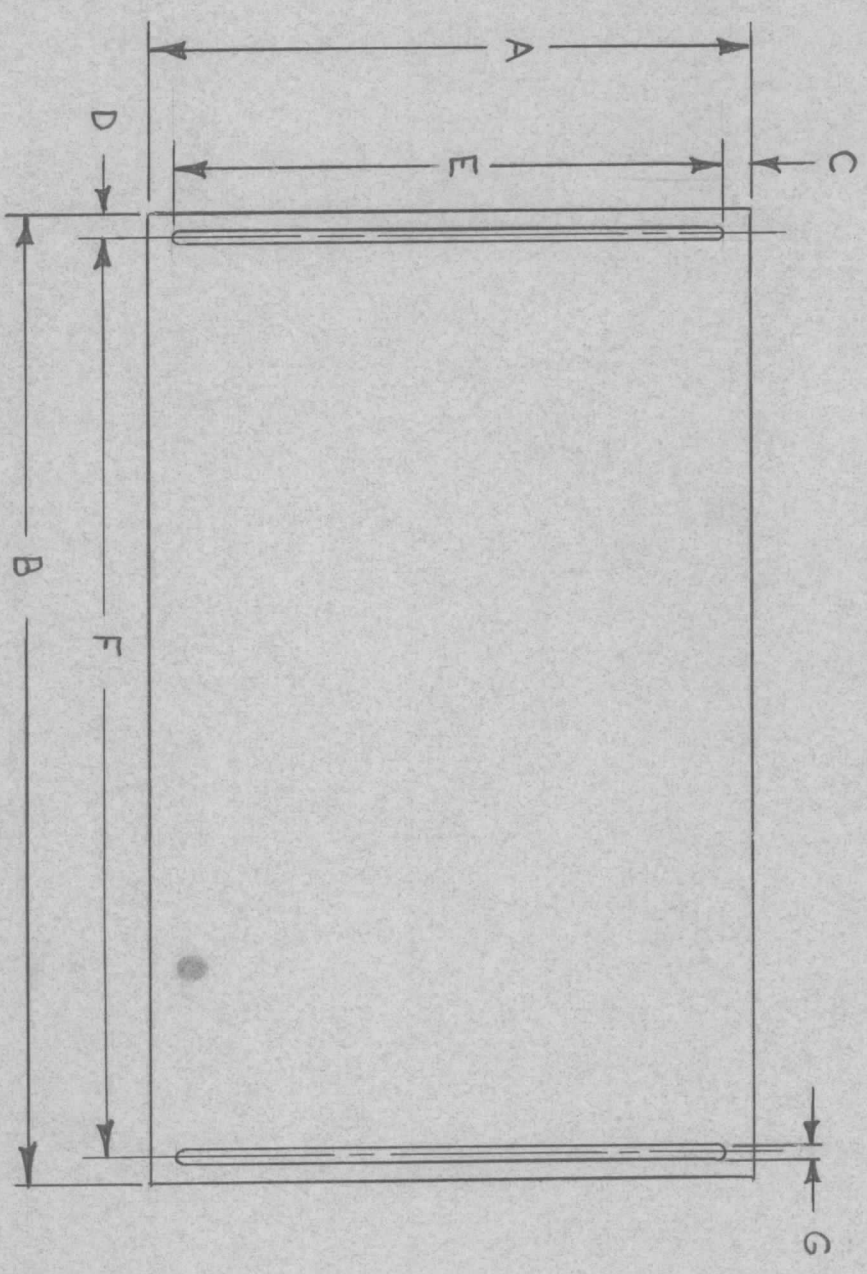
FINAL APPROVAL  
 MECH. DES. [Signature] DATE 11/19/70  
 ELECT. DES. [Signature] DATE 11/19/70

THE TECHNICAL MATERIEL CORP.  
 MAMARONECK, NEW YORK  
 BRACKET RELAY MTG

FINISH	5052 H 32	SIZE	B	CODE IDENT. NO.	82679	DWG NO.	MS 59228	ISSUE	Ø
SCALE									

TMC PART NO.	A	B	C	D	E	F	G	MATERIAL	FINISH	USED ON
- 1	9	20	3/8	5/16	8 1/4	19 3/8	13/64	063 ALUM 5052-N52	S 404 S 114 S 520	KIT 364

REVISIONS		DESCRIPTION	DATE	E.M.N.NO	DRAFT	CHKD	APPD
ZONE	LTR	ORIGINAL RELEASE	1/15/70		W		



FINISH NOTES:

- S 404 - IRIDITE 14-2 AL COAT
- S 114 - ZINC CHROMATE PRIMER
- S 520 - BLUE GRAY TEXTURED VINYL PAINT

STANDARD DRAWING

QTY / UNIT	MODEL USED ON	ASS'Y NO.
	APPLICATION	CODE

NOTICE TO PERSONS RECEIVING THIS DRAWING  
 THE TECHNICAL MATERIEL CORPORATION claims proprietary right in the material disclosed hereon. This drawing is issued in confidence for engineering information only and may not be reproduced or used to manufacture anything shown hereon without permission from THE TECHNICAL MATERIEL CORPORATION to the user. This drawing is loaned for mutual assistance and is subject to recall at any time.

UNLESS OTHERWISE SPECIFIED DIMENSIONS ARE IN INCHES AND INCLUDE CHEMICALLY APPLIED OR PLATED FINISHES	DECIMALS .X ± .05 .XX ± .01 .XXX ± .005	FRACTIONS 1/64 ANGLES 0° .30'
---	--	--

FINAL APPROVAL	MECH. DES.	DATE
<i>G.E.B.</i>	<i>W.C.</i>	<i>11/17/70</i>
ELECT. DES.	CHECKED	DATE
	<i>W.C.</i>	<i>11/17/70</i>
DRAWN	<i>R. Tolbert</i>	DATE
		<i>11/10/70</i>

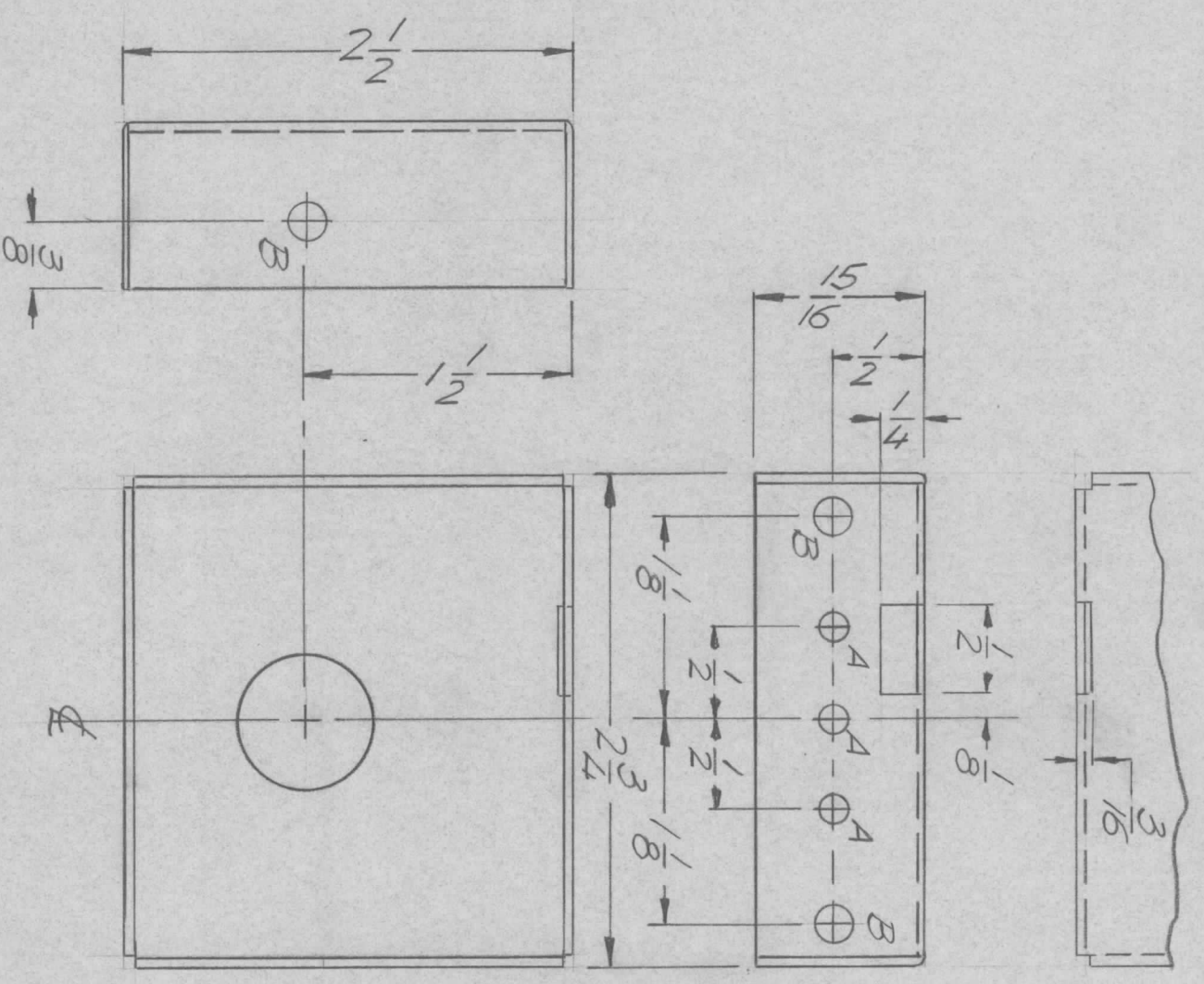
LIST OF MATERIAL	DESCRIPTION	SYM.
THE TECHNICAL MATERIEL CORP. MAMARONECK, NEW YORK		
PANEL		
SIZE	CODE IDENT. NO.	DWG NO.
B	82679	MS 5929
SCALE		SHEET 1 OF 1
		ISSUE
		<i>W</i>



ENGINEERING SKETCH FOR MANUFACTURE

REVISIONS							
ZONE	LTR	DESCRIPTION	DATE	E.M.N. NO.	DRAFT	CHKD	APPD
	Ø	ORIG RELEASE FOR PROD	11/2/71		CV		Q.E.G.
A		ADD OBSOLETE NOTE	3/27/72	20572	GE	EQ	EQ

HOLE	DESCRIPTION	REQ.
A	5/32 DIA.	3
B	13/64 DIA.	3
C	3/4 DIA.	1



1. USE MATERIAL THICKNESS FOR MAXIMUM RADIUS ON ALL BENDS.
2. ALL ANGULAR BENDS 90 DEGREES.
3. REMOVE ALL BURRS AND SHARP EDGES.
4. MOUNT INSERTS AFTER FINISHING.

QTY / UNIT	1	MODEL USED ON	HEFTA-10K	ASS'Y NO.	AX 5114
APPLICATION		CODE			

UNLESS OTHERWISE SPECIFIED DIMENSIONS ARE IN INCHES AND INCLUDE CHEMICALLY APPLIED OR PLATED FINISHES

DECIMALS .X ± .05  
.XX ± .01  
.XXX ± .005

FRACTIONS 1/64  
ANGLES 0° - 30'

MATERIAL 051 ALUM  
5052 H 32

FINISH YEL. IRIDITE

FINAL APPROVAL	MECH. DES.	ELECT. DES.	CHECKED	DRAWN	DATE	DATE	DATE
<i>[Signature]</i>				GE	11/21	11/21	11/71

LIST OF MATERIAL

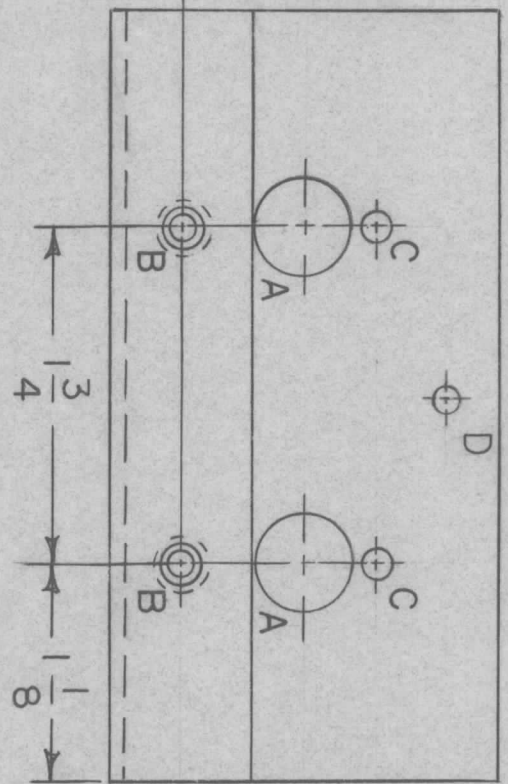
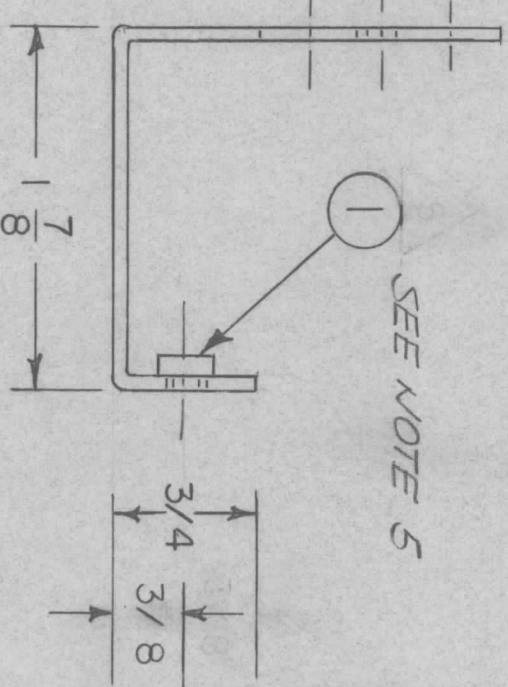
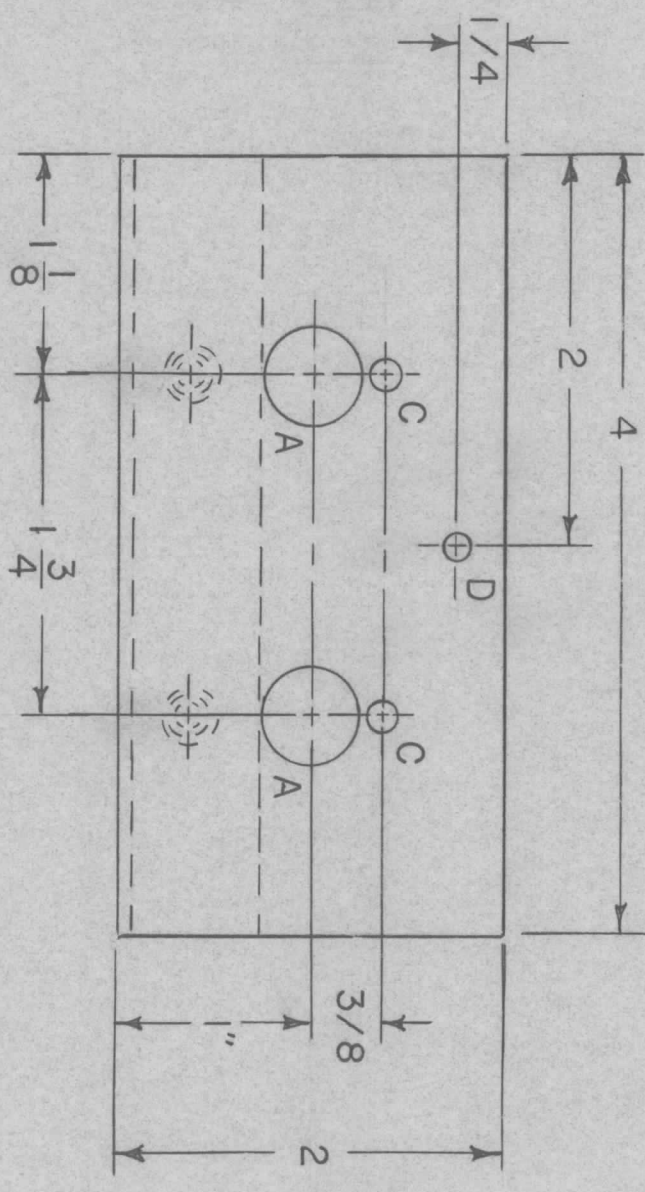
THE TECHNICAL MATERIEL CORP.  
MAMARONECK, NEW YORK

REQ'D ITEM	PART NUMBER	DESCRIPTION	SYM.
		BOX SHIELDING	
SIZE	CODE IDENT. NO.	DWG NO.	ISSUE
B	82679	MS 5933	A
SCALE	1:1	SHEET	OF

**OBSOLETE**  
REPLACED BY BX234

HOLE	DESCRIPTION	REQD
A	1/2 DIA	2
B	.191 .194 DIA	2
C	5/32 DIA	2
D	9/64	1

REVISIONS							
ZONE	LTR	DESCRIPTION	DATE	E.M.N.NO	DRAFT	CHKD	APPD
	X	EXP RELEASE	1-25-71		RF		
	Ø	RELEASE FOR PROD	3/20/71		RF		DCB



NOTES:

- UNLESS OTHERWISE SPECIFIED:
1. USE MATERIAL THICKNESS FOR MAXIMUM RADIUS ON ALL BENDS.
  2. ALL ANGULAR BENDS 90 DEGREES.
  3. REMOVE ALL BURRS AND SHARP EDGES.
  4. MOUNT INSERTS AFTER FINISHING.
  5. MOUNT IN 2 "B" HOLES

(REF: LD 2440)

REQ'D	ITEM	PART NUMBER	DESCRIPTION	SYM.
2	1	NT 129-632-4	NUT, ROUND, SWAGE TYPE	B

LIST OF MATERIAL			
<b>THE TECHNICAL MATERIEL CORP.</b>			
MAMARONECK, NEW YORK			
<b>BRACKET, SUPPORT</b>			
SIZE	CODE IDENT. NO.	DWG. NO.	ISSUE
B	82679	MS 5936	Ø

QTY / UNIT	MODEL USED ON	ASS'Y NO.
1	AX 5128	
APPLICATION		
	CODE	

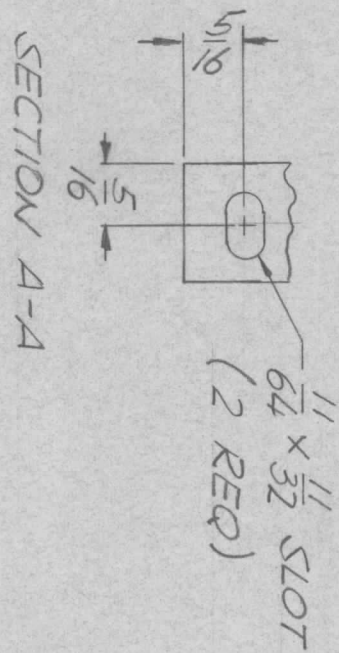
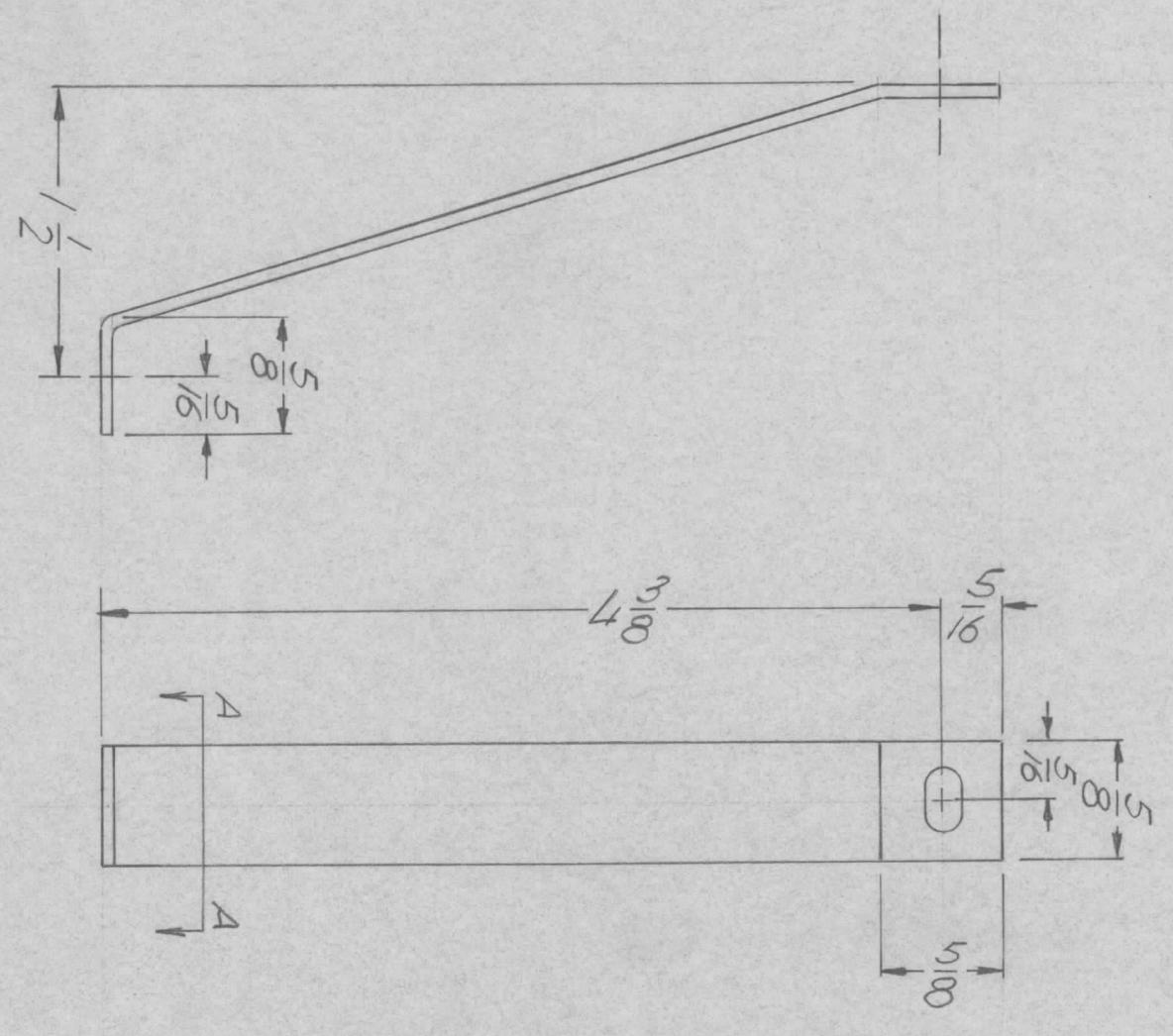
NOTICE TO PERSONS RECEIVING THIS DRAWING

THE TECHNICAL MATERIEL CORPORATION claims proprietary right in the material disclosed hereon. This drawing is issued in confidence for engineering information only and may not be reproduced or used to manufacture anything shown hereon without permission from THE TECHNICAL MATERIEL CORPORATION to the user. This drawing is loaned for mutual assistance and is subject to recall at any time.

DECIMALS	FRACTIONS
X ± .05	1/64
.XX ± .01	ANGLES
.XXX ± .005	0° .30'
MATERIAL .081 THK	
ALUM	
FINISH	
IRIDITE	



REVISIONS							
ZONE	LTR	DESCRIPTION	DATE	E.M.N.NO	DRAFT	CHKD	APPD
	X	EXP RELEASE	12/27/71		GE		OSB
	Ø	ORIG RELEASE FOR PROD	9/25/71		CV		OSB
A		OBSOLETE	6/15/71	20385	GE	Ø	OSB



**OBSOLETE**

NO LONGER USED

UNLESS OTHERWISE SPECIFIED:

1. USE MATERIAL THICKNESS FOR MAXIMUM RADIUS ON ALL BENDS.
2. ALL ANGULAR BENDS 90 DEGREES.
3. REMOVE ALL BURRS AND SHARP EDGES.
4. MOUNT INSERTS AFTER FINISHING.

QTY / UNIT	2	MODEL USED ON	AP 150	ASSY NO.	
APPLICATION					
CODE					

NOTICE TO PERSONS RECEIVING THIS DRAWING  
 THE TECHNICAL MATERIEL CORPORATION claims proprietary right in the material disclosed hereon. This drawing is issued in confidence for engineering information only and may not be reproduced or used to manufacture anything shown hereon without permission from THE TECHNICAL MATERIEL CORPORATION to the user. This drawing is loaned for mutual assistance and is subject to recall at any time.

DECIMALS	X ± .05	FRACTIONS	1/64
	.XX ± .01	TOLS.	
	.XXX ± .005	ANGLES	0° .30'

MATERIAL: .064 ALUM  
 FINISH: 5052 H32  
 S104 YEL IRDITE

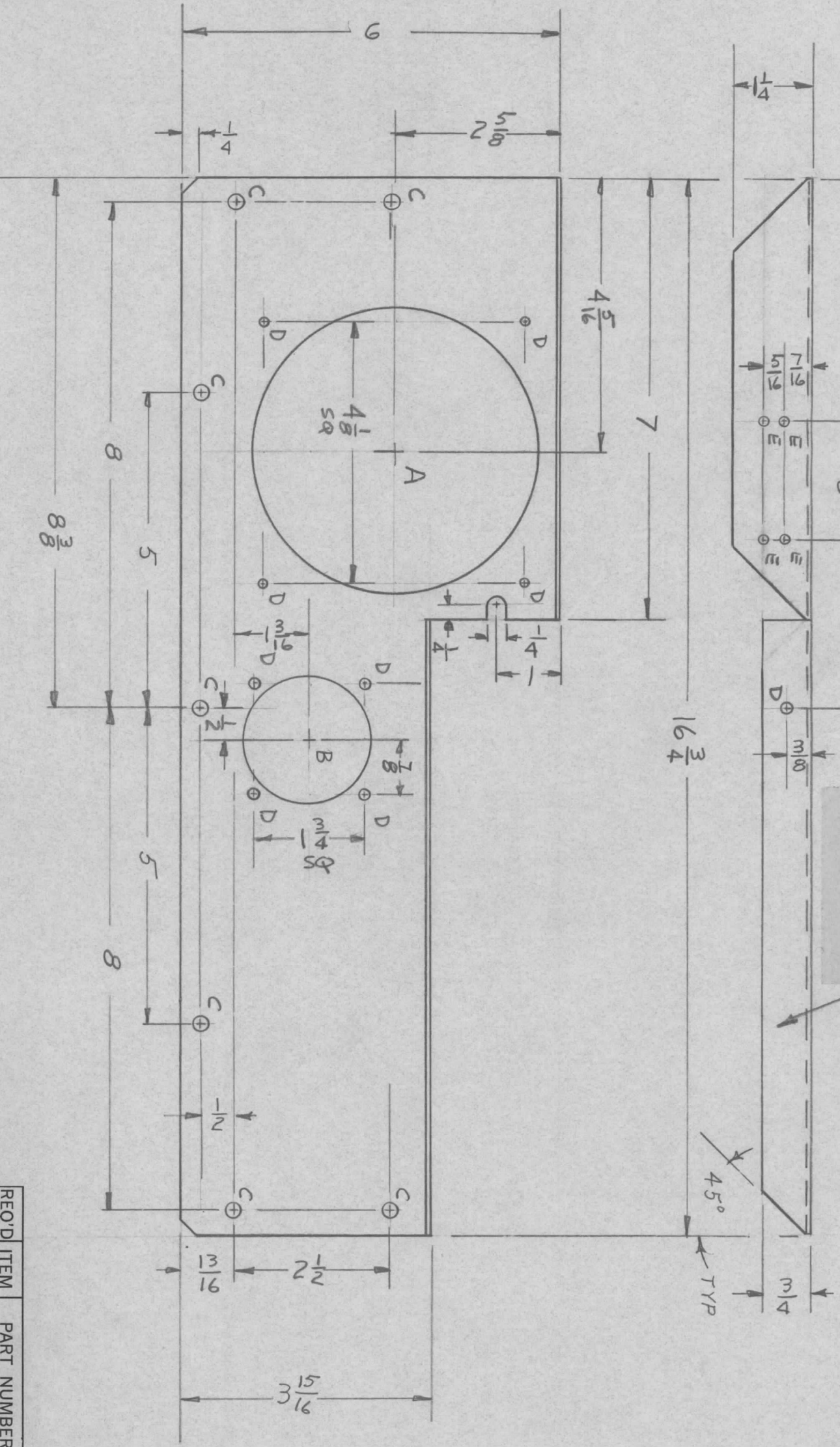
REQ'D ITEM	PART NUMBER	DESCRIPTION	SYM.
F. BUDETTI LIST OF MATERIAL			

FINAL APPROVAL	DATE	THE TECHNICAL MATERIEL CORP.
MECH. DES	DATE	MAMARONECK, NEW YORK
ELECT. DES	DATE	
CHECKED	DATE	
DRAWN	DATE	

SIZE	CODE IDENT. NO.	DWG NO.	ISSUE
B	82679	M5 5942	A
SCALE			SHEET OF

REVISIONS							
ZONE	LTR	DESCRIPTION	DATE	E.M.N.NO	DRAFT	CHKD	APPD
		ORIGINAL RELEASE	9/16/71				
A		DELE. 1 45° EDGE, ADD. 45° DIM	6-14-71	20386	Rt		

MARK TMC PART NUMBER  
1/8 HIGH GOTHIC WITH LATEST  
REVISION LETTER



- A ~ 4 1/2 DIA 1 REA.
- B ~ 2 1/2 DIA 1 REA
- C ~ 1 3/4 DIA 7 REA
- D ~ 1 1/4 DIA 9 REA
- E ~ 9/64 DIA 4 REA

REQ'D ITEM	PART NUMBER	DESCRIPTION	SYM.
BUDETTI			
LIST OF MATERIAL			

THE TECHNICAL MATERIEL CORP.  
MAMARONECK, NEW YORK

PLATE, REAR

FINAL APPROVAL		DATE	
MECH. DES.	<i>[Signature]</i>	DATE	12/16/71
ELECT. DES.	<i>[Signature]</i>	DATE	12/16/71
CHECKED	<i>[Signature]</i>	DATE	12/16/71
DRAWN	<i>[Signature]</i>	DATE	12/16/71

UNLESS OTHERWISE SPECIFIED  
DIMENSIONS ARE IN INCHES  
AND INCLUDE CHEMICALLY APPLIED  
OR PLATED FINISHES

DECIMALS FRACTIONS  
X ± .05 1/64  
.XX ± .01 TOLS. ANGLES  
.XXX ± .005 Dp .30'

MATERIAL .081 ALUM

FINISH 5052-H32  
S404 YEL IRID

QTY / UNIT	1	MODEL USED ON	HFLA-1K	ASS'Y NO.	AP152
APPLICATION					
CODE					

NOTICE TO PERSONS RECEIVING THIS DRAWING  
THE TECHNICAL MATERIEL CORPORATION claims proprietary right in the material  
disclosed hereon. This drawing is issued in confidence for engineering information only  
and may not be reproduced or used to manufacture anything shown hereon without  
permission from THE TECHNICAL MATERIEL CORPORATION to the user. This drawing is  
loaned for mutual assistance and is subject to recall at any time.

UNLESS OTHERWISE SPECIFIED:

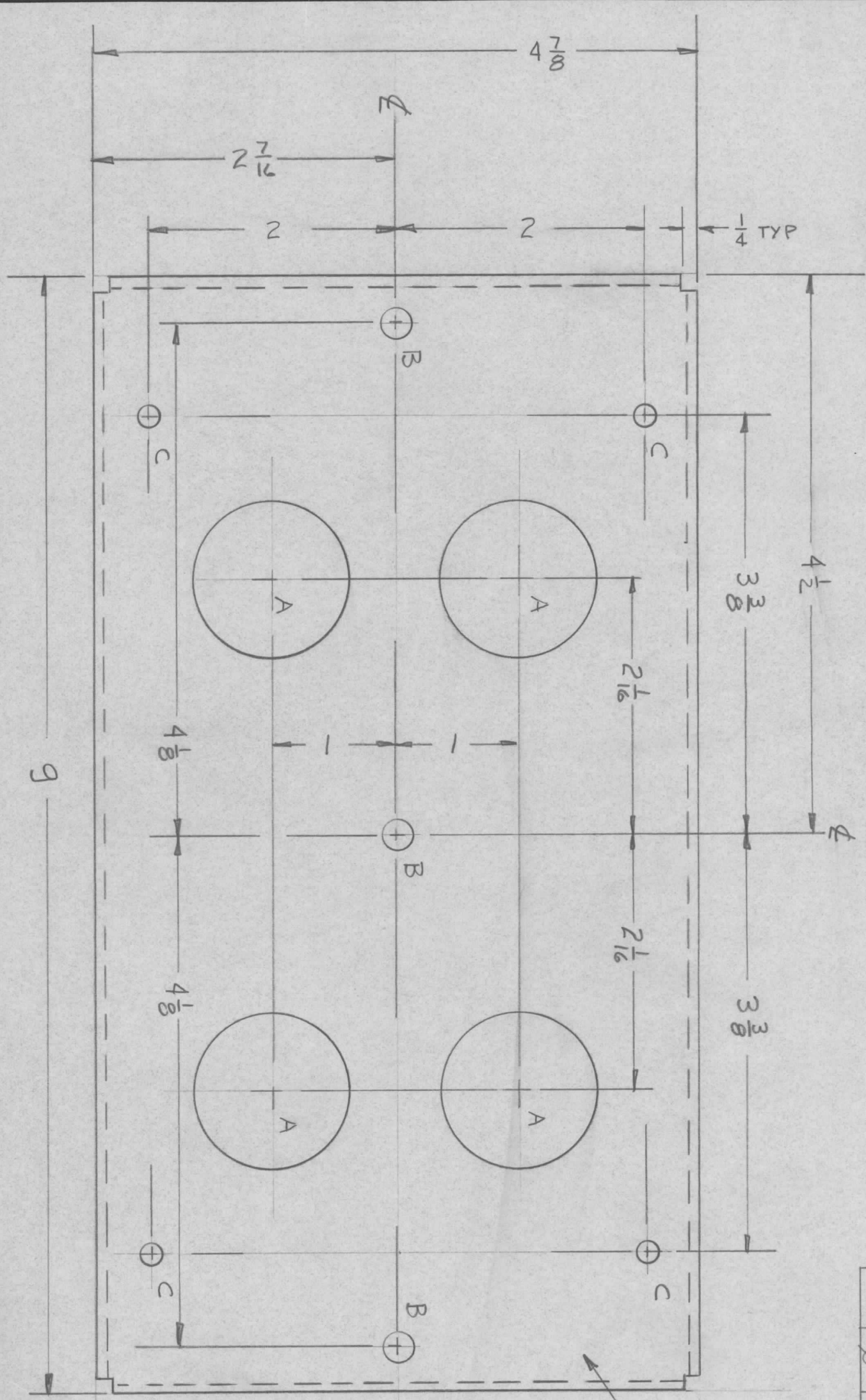
1. USE MATERIAL THICKNESS FOR MAXIMUM RADIUS ON ALL BENDS.
2. ALL ANGULAR BENDS 90 DEGREES.
3. REMOVE ALL BURRS AND SHARP EDGES.
4. MOUNT INSERTS AFTER FINISHING.

REVISIONS							
ZONE	LTR	DESCRIPTION	DATE	E.M.N.NO	DRAFT	CHKD	APPD
Ø		ORIGINAL RELEASE	5/5/71				

MARK TMC PART NUMBER  
1/8 HIGH GOTHIC WITH LATEST  
REVISION LETTER

- A ~ 1/4 DIA 4 REQ
- B ~ 15/64 DIA 3 REQ
- C ~ 11/64 DIA 4 REQ

ALL LIPS 3/8"



UNLESS OTHERWISE SPECIFIED:

1. USE MATERIAL THICKNESS FOR MAXIMUM RADIUS ON ALL BENDS.
2. ALL ANGULAR BENDS 90 DEGREES.
3. REMOVE ALL BURRS AND SHARP EDGES.
4. MOUNT INSERTS AFTER FINISHING.

QTY / UNIT	2	MODEL USED ON	HFTA-1KJ	ASSY NO.	AP152
APPLICATION		CODE			

NOTICE TO PERSONS RECEIVING THIS DRAWING  
THE TECHNICAL MATERIEL CORPORATION claims proprietary right in the material disclosed hereon. This drawing is issued in confidence for engineering information only and may not be reproduced or used to manufacture anything shown hereon without permission from THE TECHNICAL MATERIEL CORPORATION to the user. This drawing is loaned for mutual assistance and is subject to recall at any time.

DECIMALS	UNLESS OTHERWISE SPECIFIED DIMENSIONS ARE IN INCHES AND INCLUDE CHEMICALLY APPLIED OR PLATED FINISHES	
.X ± .05	TOLS.	FRACTIONS
.XX ± .01		1/64
.XXX ± .005	ANGLES	0° .30'
MATERIAL: 081 ALUM		
52052-H 32		
FINISH		
S404 YEL IRID		

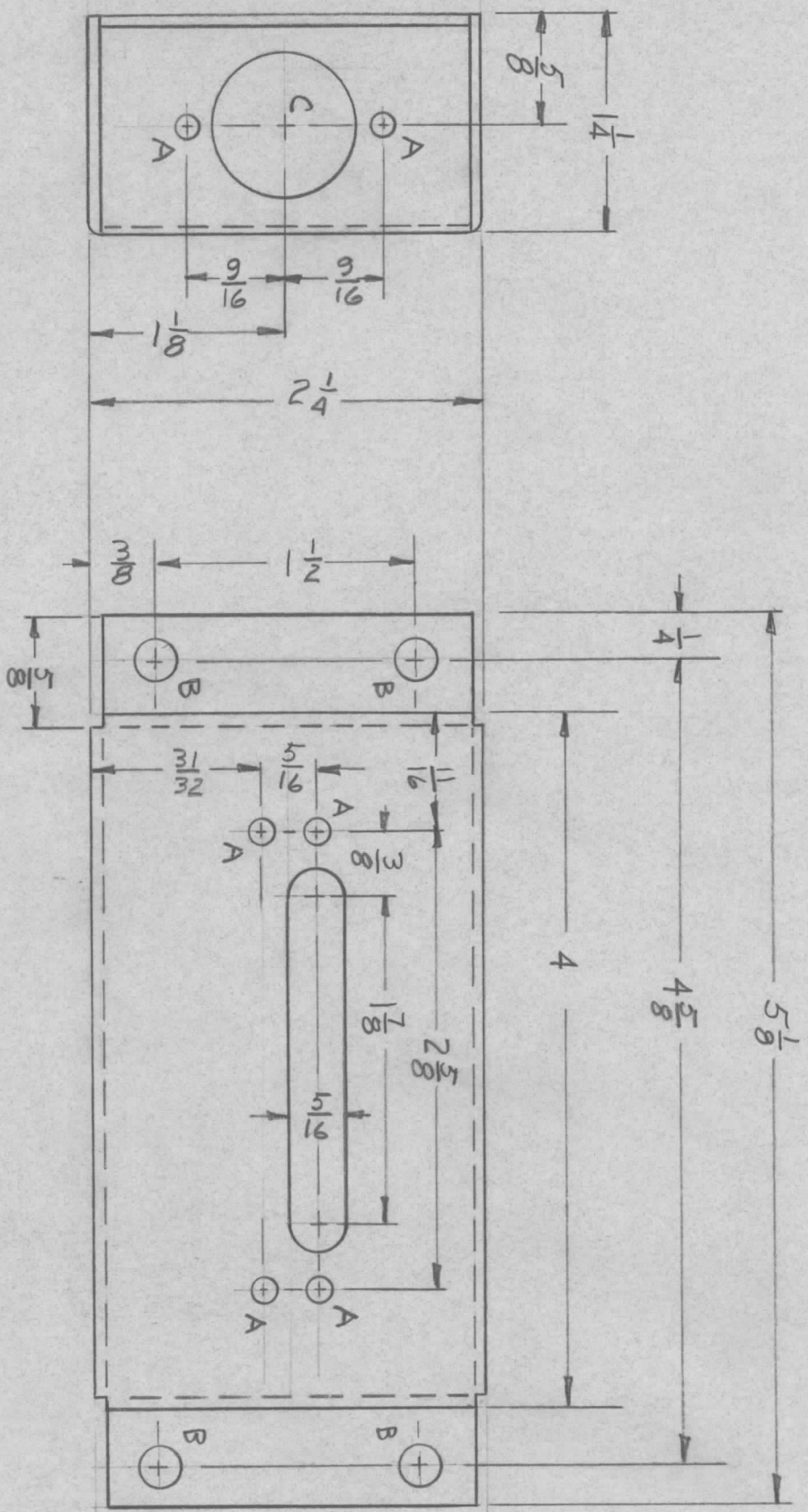
REQ'D ITEM	PART NUMBER	DESCRIPTION	SYM.
LIST OF MATERIAL			
BUD 211			

THE TECHNICAL MATERIEL CORP.  
MAMARONECK, NEW YORK

BRRKT, CAP MTG

FINAL APPROVAL	DATE	MECH. DES.	DATE	DATE
<i>[Signature]</i>	5/5/71	<i>[Signature]</i>	5/5/71	5/5/71
ELECT. DES.	DATE	CHECKED	DATE	DATE
		<i>[Signature]</i>		
SCALE	SIZE	CODE IDENT. NO.	DWG NO.	ISSUE
B	B	82679	MS 5946	Ø
				SHEET OF

REVISIONS						
ZONE	LTR	DESCRIPTION	DATE	E.M.N.NO	DRAFT	CHKD
Ø		ORIG RELEASE FOR PROD	4/8/71			
						PCD



MARK TMC PART NUMBER  
1/8 HIGH GOTHIC WITH LATEST  
REVISION LETTER

- A ~ 1/8 DIA 6 REQR
- B ~ 15/24 DIA 4 REQR
- C ~ 13/16 DIA 1 REQR

UNLESS OTHERWISE SPECIFIED:

1. USE MATERIAL THICKNESS FOR MAXIMUM RADIUS ON ALL BENDS.
2. ALL ANGULAR BENDS 90 DEGREES.
3. REMOVE ALL BURRS AND SHARP EDGES.
4. MOUNT INSERTS AFTER FINISHING.

QTY / UNIT	RAK 137	ASS'Y NO.	AX 5131
APPLICATION			
CODE			

NOTICE TO PERSONS RECEIVING THIS DRAWING  
THE TECHNICAL MATERIEL CORPORATION claims proprietary right in the material disclosed herein. This drawing is issued in confidence for engineering information only and may not be reproduced or used to manufacture anything shown herein without permission from THE TECHNICAL MATERIEL CORPORATION to the user. This drawing is loaned for mutual assistance and is subject to recall at any time.

REF: LD 2452

REQ'D ITEM	PART NUMBER	DESCRIPTION	SYM.
BUDGET		LIST OF MATERIAL	

THE TECHNICAL MATERIEL CORP.  
MAMARONECK, NEW YORK

CHAS, AUDIO MATCH

FINAL APPROVAL	DATE	DATE	DATE
MECH. DES.	8/26/71	8/26/71	8/26/71
ELECT. DES.			
CHECKED	DATE	DATE	DATE
DRAWN	8/26/71		

DECIMALS	X ± .05	FRACTIONS	1/64
	.XX ± .01	TOLS.	ANGLES
	.XXX ± .005		0° .30'

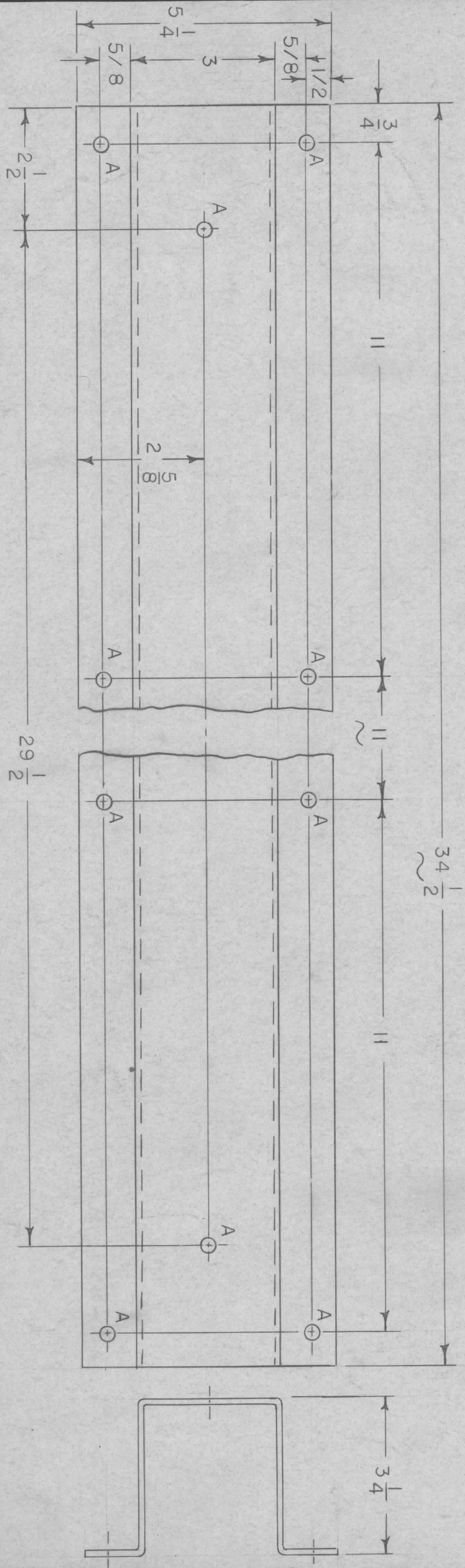
MATERIAL	ALUM 5052-H32
FINISH	SAO4 YEL IRID

SIZE	CODE IDENT. NO.	DWG NO.	ISSUE
B	82679	MS 5966	Ø

SCALE \_\_\_\_\_ SHEET \_\_\_\_\_ OF \_\_\_\_\_

HOLE	DIMENSION	REQD
A	5/16 DIA	10

REVISIONS							
ZONE	LTR	DESCRIPTION	DATE	E.M.N.NO	DRAFT	CHKD	APPD
X		EXP RELEASE	5-7-71		RF		
Ø		ORIG RELEASE FOR PROD	1/12/72		CV		



NOTES:

- UNLESS OTHERWISE SPECIFIED:
1. USE MATERIAL THICKNESS FOR MAXIMUM RADIUS ON ALL BENDS.
  2. ALL ANGULAR BENDS 90 DEGREES.
  3. REMOVE ALL BURRS AND SHARP EDGES.
  4. MOUNT INSERTS AFTER FINISHING.

QTY / UNIT	1	MODEL USED ON	BCT-10KA	ASS'Y NO.	BMA 466
APPLICATION		CODE			

**NOTICE TO PERSONS RECEIVING THIS DRAWING**  
 THE TECHNICAL MATERIEL CORPORATION claims proprietary right in the material disclosed hereon. This drawing is issued in confidence for engineering information only and may not be reproduced or used to manufacture anything shown hereon without permission from THE TECHNICAL MATERIEL CORPORATION to the user. This drawing is loaned for mutual assistance and is subject to recall at any time.

DECIMALS	.X ± .05	TOLS.	1/64
	.XX ± .01	ANGLES	0° .30'
	.XXX ± .005		
MATERIAL	ALUM 5052 H32		
FINISH	TMC GREY		

REQ'D ITEM	PART NUMBER	DESCRIPTION	SYM.
	F. BUDETTI	LIST OF MATERIAL	

THE TECHNICAL MATERIEL CORP.  
 MAMARONECK, NEW YORK  
 PAD, STAB. MTG.

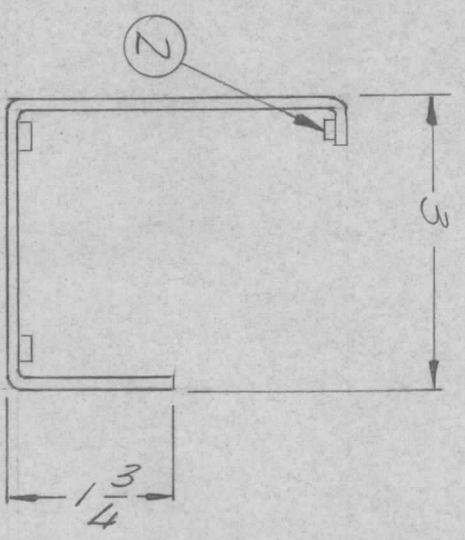
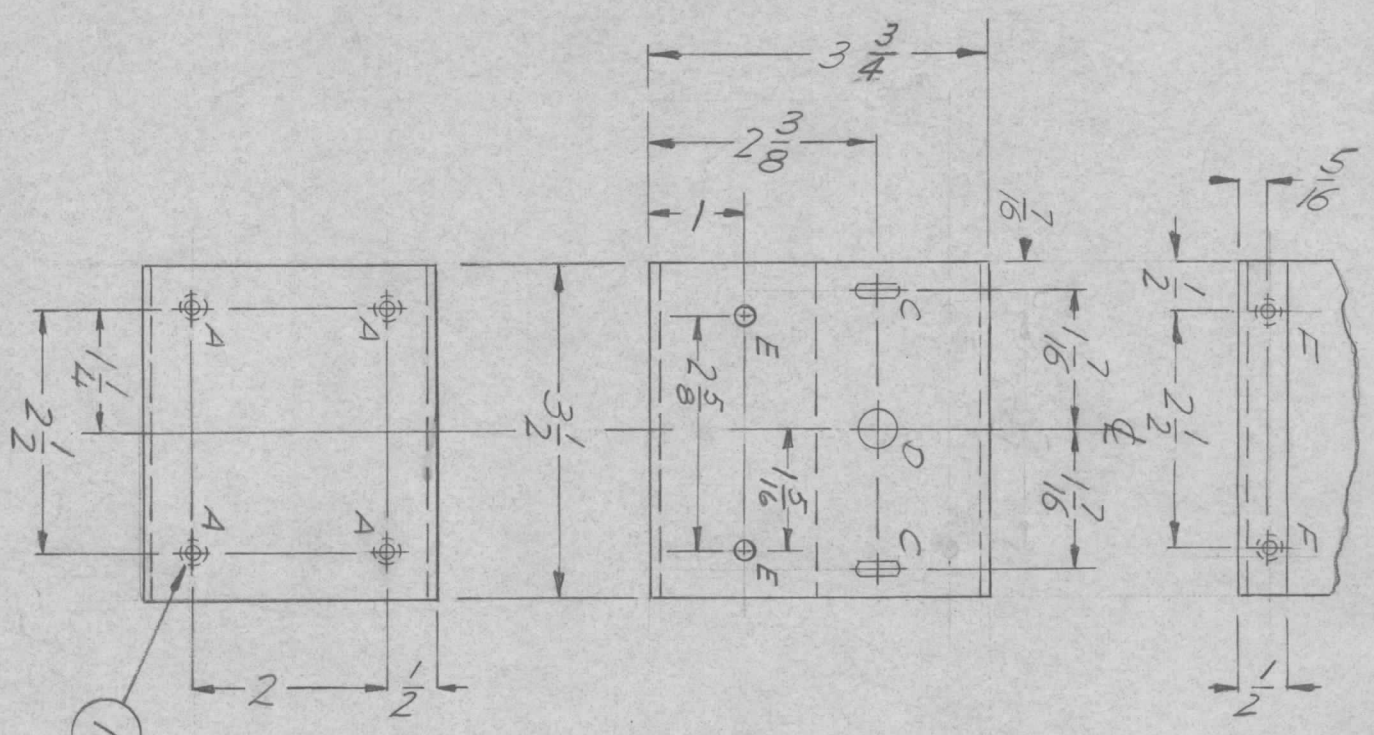
FINAL APPROVAL	MECH. DES.	DATE	DATE
<i>[Signature]</i>		5/7/71	
CHECKED	ELECT. DES.	DATE	DATE
<i>[Signature]</i>		5-7-71	
DRAWN	DATE	DATE	
<i>[Signature]</i>	5-7-71		
SIZE	CODE IDENT. NO.	DWG NO.	ISSUE
B	82679	MS 5986	Ø
SCALE	1/2	SHEET	1 OF 1



REVISIONS		DATE	E.M.N.NO	DRAFT	CHKD	APPD
ZONE	LTR	DESCRIPTION				
	Ø	ORIG RELEASE FOR PROD	10/14/11	CV		
	A	MATL. & PU CHANGE	4/19/12	20612	GE	GE

HOLE	DESCRIPTION	QTY.
A	.251 - .254 D.	4
B	13/64 D	2
C	3/16 x 1/2 SLT.	2
D	3/8 D.	1
E	11/64 D.	2
F	.191 - .194 D	2

MARK TMC PART NUMBER  
1/8 HIGH GOTHIC WITH LATEST  
REVISION LETTER



REQ'D ITEM	PART NUMBER	DESCRIPTION	SYM.
2	KT129-632-6	KUT PLN SPLINE	F
4	KT129-1032-6	KUT PLN SPLINE	A

THE TECHNICAL MATERIEL CORP.  
MAMARONECK, NEW YORK

BRACKET, SW HTG, FRONT

QTY / UNIT	MODEL USED ON	ASSY NO.
	TFP 1K	
	APPLICATION	
	CODE	

DECIMALS	FRACTIONS
X ± .05	1/64
.XX ± .01	ANGLES
.XXX ± .005	0° - 30'
MATERIAL	FINISH
1/8 ALUM	5052 H32
	S404 VEL. RDITE

FINAL APPROVAL	DATE
MECH. DES.	DATE
ELECT. DES.	DATE
CHECKED	DATE
DRAWN	DATE

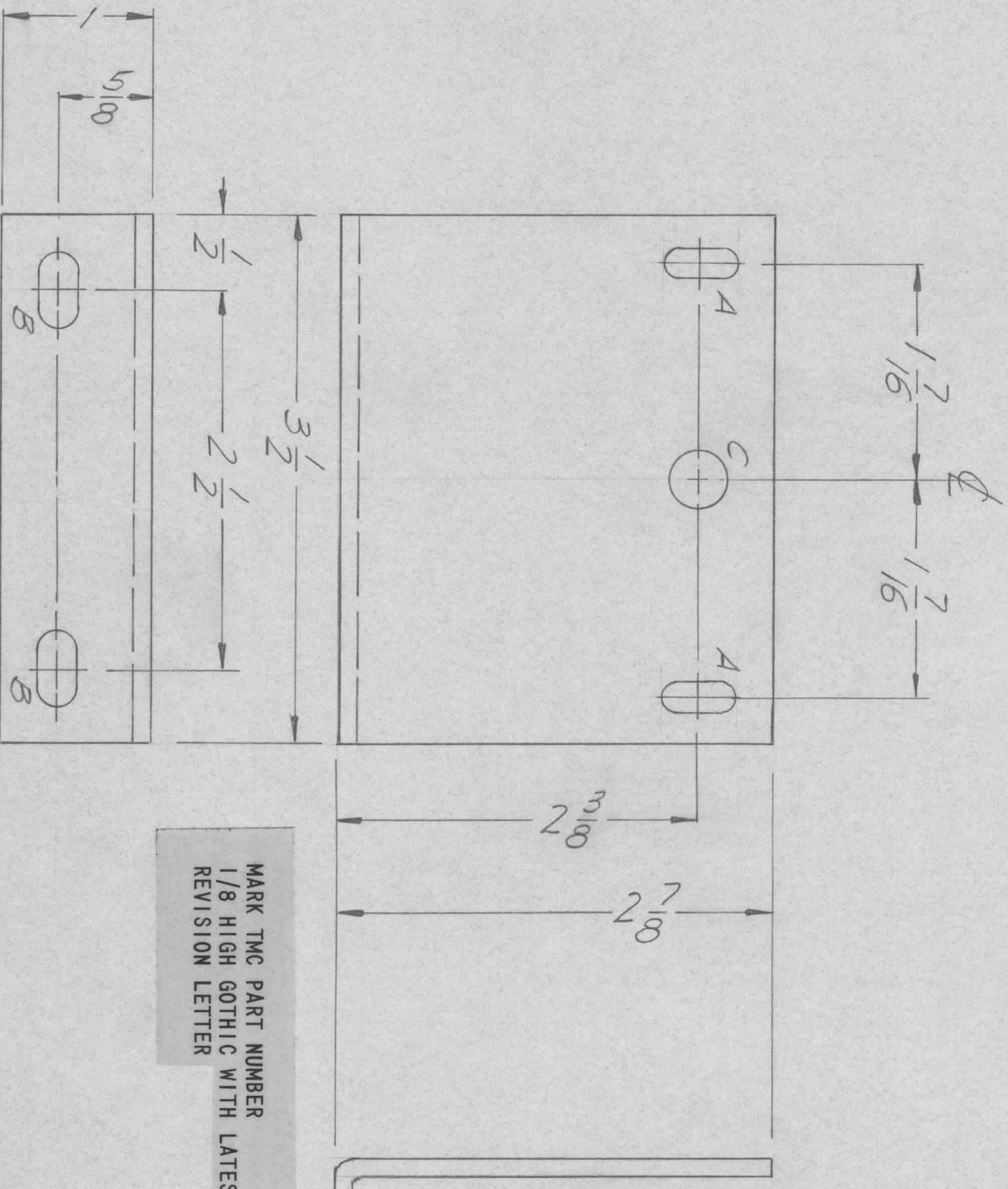
SIZE	CODE IDENT. NO.	DWG NO.	ISSUE
B	82679	MS 5998	A
SCALE	SHEET		OF

- UNLESS OTHERWISE SPECIFIED:
1. USE MATERIAL THICKNESS FOR MAXIMUM RADIUS ON ALL BENDS.
  2. ALL ANGULAR BENDS 90 DEGREES.
  3. REMOVE ALL BURRS AND SHARP EDGES.
  4. MOUNT INSERTS AFTER FINISHING.

NOTICE TO PERSONS RECEIVING THIS DRAWING  
THE TECHNICAL MATERIEL CORPORATION claims proprietary right in the material disclosed herein. This drawing is issued in confidence for engineering information only and may not be reproduced or used to manufacture anything shown hereon without permission from THE TECHNICAL MATERIEL CORPORATION to the user. This drawing is loaned for mutual assistance and is subject to recall at any time.

REVISIONS							
ZONE	LTR	DESCRIPTION	DATE	E.M.N.NO	DRAFT	CHKD	APPD
Ø		ORIG RELEASE FOR PROD	10/14/71		CV		

HOLE	DESCRIPTION	REQ
A	3/16 x 1/2 SLT.	2
B	1/4 x 1/2 SLT.	2
C	3/8 DIA.	1



UNLESS OTHERWISE SPECIFIED:

1. USE MATERIAL THICKNESS FOR MAXIMUM RADIUS ON ALL BENDS.
2. ALL ANGULAR BENDS 90 DEGREES.
3. REMOVE ALL BURRS AND SHARP EDGES.
4. MOUNT INSERTS AFTER FINISHING.

QTY / UNIT: 1  
 MODEL USED ON: TEP 1K  
 ASS'Y NO.:  
 APPLICATION: CODE:  
 NOTICE TO PERSONS RECEIVING THIS DRAWING  
 THE TECHNICAL MATERIEL CORPORATION claims proprietary right in the material disclosed hereon. This drawing is issued in confidence for engineering information only and may not be reproduced or used to manufacture anything shown hereon without permission from THE TECHNICAL MATERIEL CORPORATION to the user. This drawing is loaned for mutual assistance and is subject to recall at any time.

DECIMALS	FRACTIONS
.X ± .05	1/64
.XX ± .01	ANGLES
.XXX ± .005	0° - 30'

MATERIAL: 1/8 ALUM  
 FINISH: S404  
 VEL. REDITE

REQ'D ITEM	PART NUMBER	DESCRIPTION	SYM.
F. BUDETTI			

THE TECHNICAL MATERIEL CORP.  
 MAMARONECK, NEW YORK

FINAL APPROVAL: [Signature] DATE: 23/6/71  
 MECH. DES.: [Signature] DATE: 23/6/71  
 ELECT. DES.: [Signature] DATE: 23/6/71  
 CHECKED: [Signature] DATE: 23/6/71  
 DRAWN: GE DATE: 2/23/71

LIST OF MATERIAL: BRACKET, SW MGT, REAR

SIZE: B  
 CODE IDENT. NO.: 82679  
 DWG NO.: MS 5999  
 SCALE: OF SHEET 1